

acer

explore beyond limits™



MWA2 Wireless Adapter
User Manual

Contents

Product Features	4
Connecting to a Projector/Monitor/TV	5
Home Screen.....	6
Navigating the Home Screen	7
Using eDisplay on a Mac or Windows PC	8
Using eDisplay on a Mobile Device	9
Displaying Media over DLNA.....	10
Using Miracast.....	11
Acer MWA2 Miracast™ compatible devices (July, 24 2013).....	12
Using the Acer MWA Remote App.....	13
Setup	15
About.....	15
Network Settings	15
Navigating the Network Setting Screen.....	16
Using the On-screen Keyboard	16
Choosing between Modes.....	17
AP Mode.....	18
Client Mode	19
Changing the Language	20
Upgrading the Firmware.....	21
Regulatory Information	23
Federal Communication Commission Interference Statement.....	23
IMPORTANT NOTE:.....	23
Radiation Exposure Statement:.....	23
Industry Canada statement:	24
Radiation Exposure Statement:.....	25
Déclaration d'exposition aux radiations:.....	25

Product Features



1. MHL connector

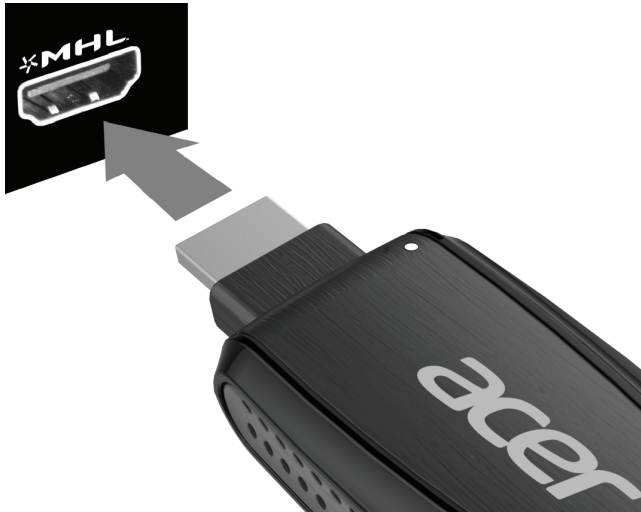
- Connect to MHL port on compatible TV, monitor or projector.

2. Status LED

3. WPS (Wi-Fi Protected Setup) button

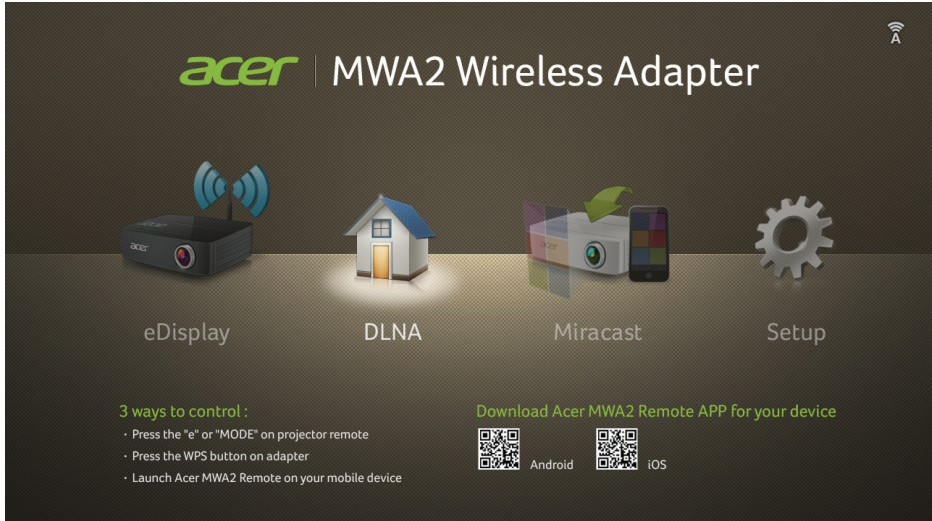
- Press briefly to switch between display modes.
- Press and hold to return to Home Screen.
- Press briefly during Miracast setup to complete connection.

Connecting to a Projector/Monitor/TV



1. Power on the projector/monitor/TV.
2. Plug the MWA2 Wireless Adapter into an available MHL port.
3. Wait several seconds for Home Screen to appear.

Home Screen



The Home Screen appears automatically once the projector/monitor/TV is switched on and correctly connected to the MWA2 Wireless Adapter. Four icons are shown, as described below:

- **eDisplay** - Takes you to the eDisplay screen and provides details on how to connect your computer or mobile device using this method. For more information, see “Using eDisplay on a Mobile Device” on page 9.
- **DLNA** - Takes you to the DLNA screen and provides details on how to connect your computer or mobile device using this method. For more information, see “Displaying Media over DLNA” on page 10.
- **Miracast** - Takes you to the Miracast screen and provides details on how to connect your compatible device using this method. For more information, see “Using Miracast” on page 11.
- **Setup** - Takes you to the Setup screen where you can find information about, or configure the MWA2 Wireless Adapter. For more information, see “Setup” on page 15.

Navigating the Home Screen

There are several ways to select an icon from the Home Screen, as follows:

- **Using the projector/monitor/TV's remote control** - Use the remote control's left/right/select buttons to move around the Home Screen and select an icon. Note that if an icon is highlighted, it will automatically be selected after approximately three seconds. To return to the Home Screen, press the remote control's Back button.
- **Using the WPS button on the Wireless Adapter** - Briefly press the WPS button to move between the icons. When an icon is left highlighted for approximately three seconds, it will automatically be selected. To return to the Home Screen, press the WPS button for at least two seconds, then release.
- **Using your mobile device as a remote control** - By downloading and installing the Acer MWA Remote app, you can use your mobile device as a remote control to control the MWA2 Wireless Adapter. For more information, see "Using the Acer MWA Remote App" on page 13.

Using eDisplay on a Mac or Windows PC



To connect your Mac or Windows PC to the MWA2 Wireless Adapter, first install the driver, as follows:

1. **On the projector/monitor/TV**, go to the **eDisplay** screen by using that device's remote control, or by briefly pressing the WPS button on the MWA2 Wireless Adapter.
2. Open Wi-Fi on your computer.
3. Connect it to the MWA2 (Acer_MWA2_XXXX).
4. Open your Internet Browser and key in the **WiFi IP** as shown on your projector/monitor/TV.
5. Download the driver for your Mac or Windows PC.

Using eDisplay on a Mobile Device



Acer eDisplay

ACTIONS MICROELECTRONICS CO., LTD.

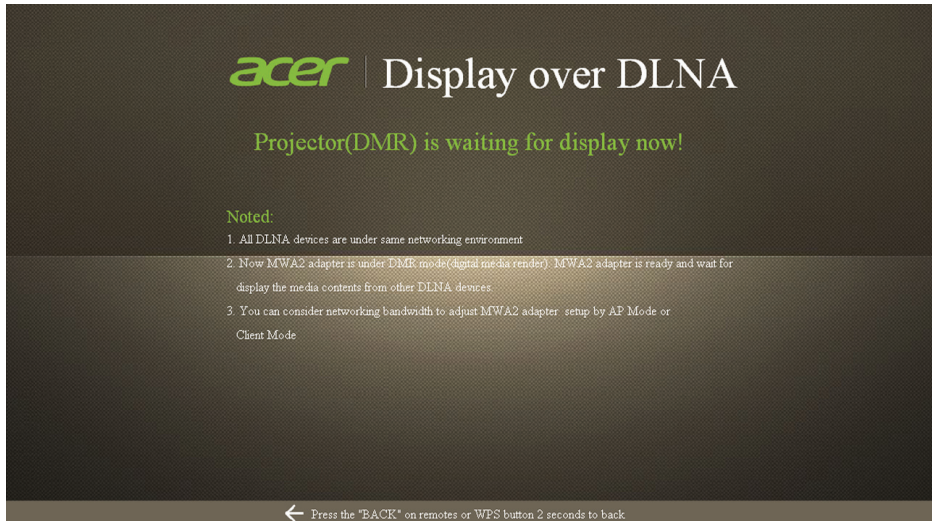
/ **PRODUCTIVITY**

★★★★★ (4)

INSTALL

1. Download and install the **Acer eDisplay** app (shown above) from the Apple Store or Google Play.
Alternatively, you can download this app directly if you have a QR barcode reader by scanning the QR barcode on the **eDisplay** screen shown on the previous page.
2. Open Wi-Fi Settings on your mobile device and connect to **Acer_MWA2_XXXX**. By default, no password is required.
3. Open the **Acer eDisplay** app on your mobile device.
4. Select the **MWA2** device on the list that appears in order to connect to the MWA2 Wireless Adapter.
5. **On the projector/monitor/TV**, go to the **eDisplay** screen by using that device's remote control, or by briefly pressing the WPS button on the MWA2 Wireless Adapter to switch between modes.
6. Choose which type of file to display from the options displayed at the top of the screen.
Options available include Photo, Document, Internet, Dropbox, Camera, Video and Split Control.
7. Depending on the type of file chosen, use the icons or other options offered on the mobile device's screen to browse for and open the required file.
8. The chosen file will now be displayed by the projector/monitor/TV.

Displaying Media over DLNA



1. **On the projector/monitor/TV**, go to the **DLNA** screen by using that device's remote control, or by briefly pressing the WPS button twice on the MWA2.
2. Open Wi-Fi on your computer or other device.
3. Connect it to the MWA2 (Acer_MWA2_XXXX).
4. Open the DLNA-supporting Software on your computer or other device.
5. Ensure both media source device and the dongle are connected to the same AP or physical network.
6. Ensure that the renderer is set as the MWA2 (Acer_MWA2_XXXX).
7. Start playing media on your computer or other device.

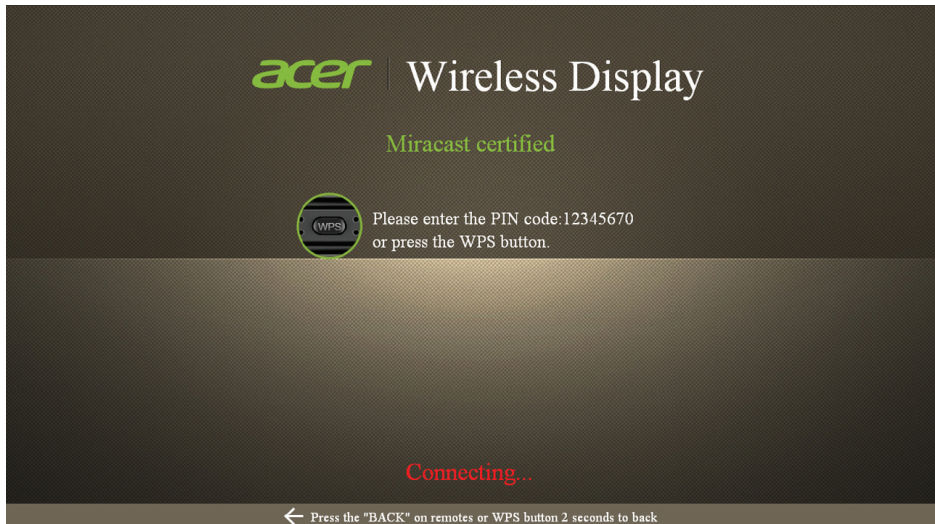
Using Miracast



If your device supports Miracast, you can use this instead of eDisplay.

1. On your mobile device, open **Settings**.
2. Choose **Display**.
3. Select **Wireless Display**.
4. Switch Wireless Display **ON**.
5. If you do not already see Acer_MWA2_XXXX on the list of Wireless displays, tap **SEARCH FOR DISPLAYS**.
6. Tap **Acer_MWA2_XXXX** to connect to the MWA2 Wireless Adapter.

7. If asked to do so, press the WPS button on the MWA2 Wireless Adapter, or input the PIN code shown on the screen (see below) into your mobile device.



8. After several seconds, the projector/monitor/TV will start displaying what is shown on the screen of your mobile device.

Note that you must have Wi-Fi enabled on your mobile device in order for Miracast to work.

At the time of writing, the following is a list of Acer MWA2 Miracast™ compatible devices:

Acer MWA2 Miracast™ compatible devices (July, 24 2013)	
Google	Nexus 4
HTC	New One (International version)
LG	Optimus G
Sony	Xperia T
	Xperia TX
	Xperia V
Xiaomi	Xiaomi Phone 2

Using the Acer MWA Remote App



As an alternative to using the remote control of your projector/monitor/TV, you can control the MWA2 Wireless Adapter directly from your mobile device using the Acer MWA Remote app, as follows:

1. Download and install the **Acer MWA Remote** app (shown above) from the Apple Store or Google Play (alternatively you can go straight to the download link by scanning the QR barcode on the projector/monitor/TV display if you have a suitable QR barcode scanner on your mobile device). The QR barcode is highlighted in the image below:

A screenshot of the Acer MWA2 Wireless Adapter interface. At the top, it says "acer | MWA2 Wireless Adapter" with a Wi-Fi icon in the top right. Below this are four icons: a black Acer MWA2 adapter with a blue Wi-Fi signal, a house icon labeled "DLNA", a white adapter with a green arrow and a smartphone labeled "Miracast", and a grey gear icon labeled "Setup". Below the icons are the labels "eDisplay", "DLNA", "Miracast", and "Setup". At the bottom left, it says "3 ways to control:" followed by a list of instructions. At the bottom right, there is a red-bordered box containing the text "Download Acer MWA2 Remote APP for your device" and two QR codes labeled "Android" and "iOS".

acer | MWA2 Wireless Adapter

eDisplay DLNA Miracast Setup

3 ways to control :

- Press the "e" or "MODE" on projector remote
- Press the WPS button on adapter
- Launch Acer MWA2 Remote on your mobile device

Download Acer MWA2 Remote APP for your device

Android iOS

2. Open the **Acer MWA Remote** app on your mobile device. The app will search for suitable devices to control.
3. Choose the MWA2 Wireless Adapter from the list which appears. The following screen is then displayed:

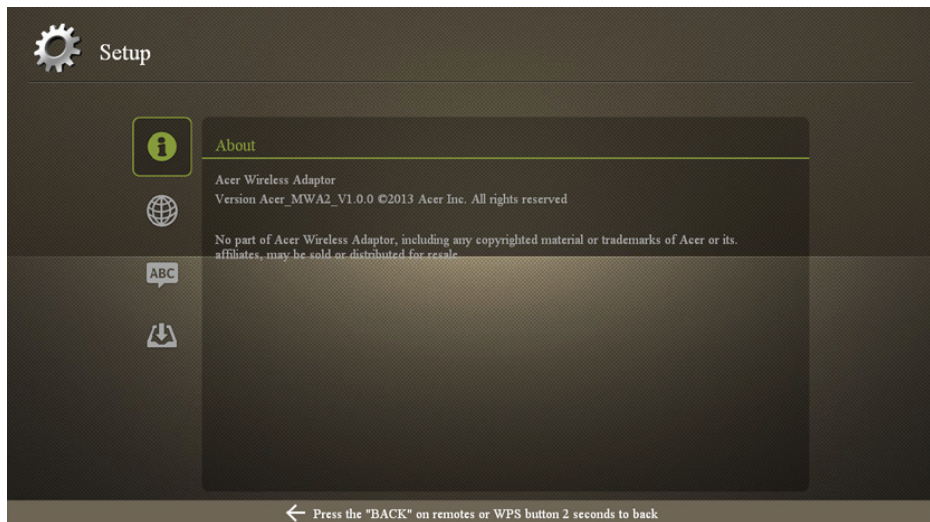


4. Use the left, right, up, down, or select (center) keys to control the MWA2 Wireless Adapter. the **Esc** key acts as a back button.
5. When finished, use the back button on your mobile device (not the Esc key in the Acer MWA Remote app) to exit the application.

Note that you must have Wi-Fi enabled on your mobile device in order for the Acer MWA Remote app to work.

Setup

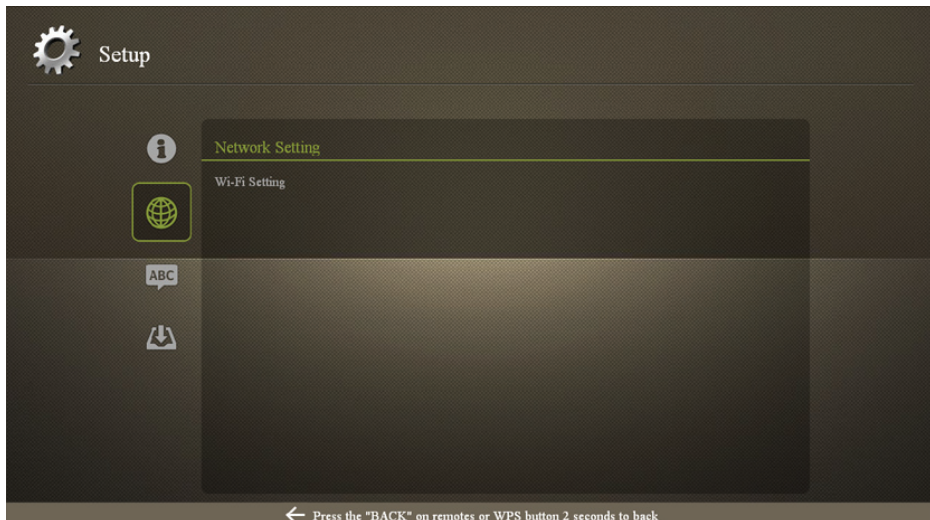
About



Select "about" to view model information about your MWA2 Wireless Adaptor.

Network Settings

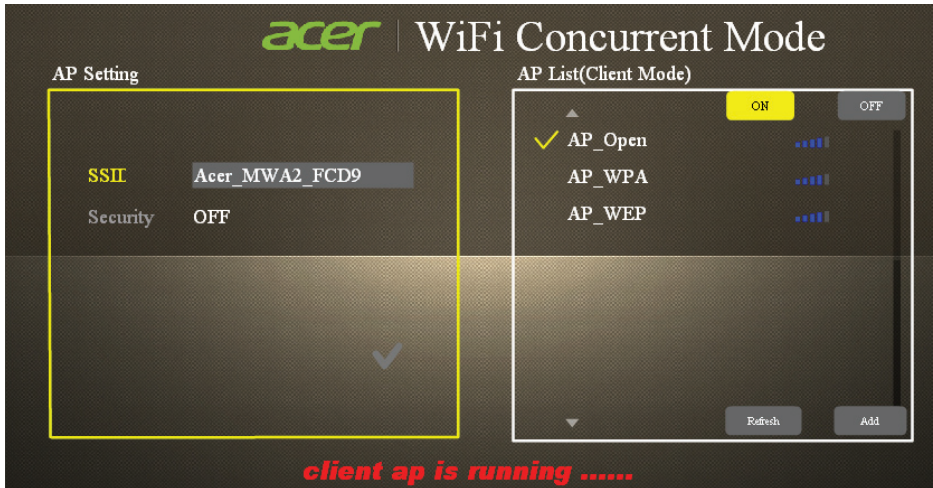
To enter network settings, select **Network Setting**.



Navigating the Network Setting Screen

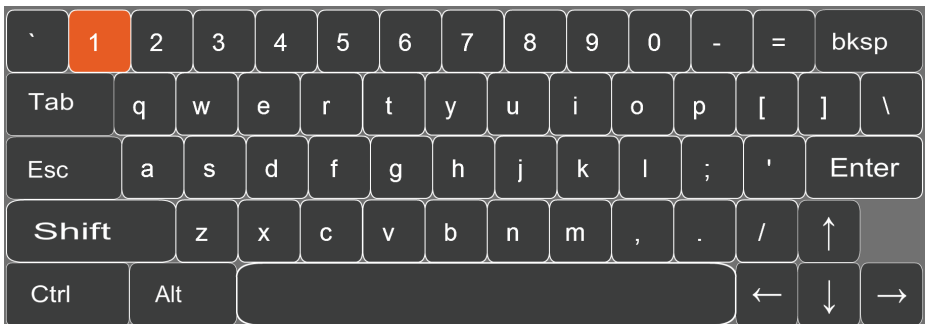
Use your control's left, right, up, down and select keys to navigate the Network Settings screen as follows:

- Use the left/right keys to choose between the **AP Setting** window (left) and the **AP List (Client Mode)** window (right). The currently-selected window will be highlighted with a yellow surround.
- Use the up/down keys to move between options within the selected window.
- Use the select key to select an option.



Using the On-screen Keyboard

Any time you click into a text entry field, the on-screen keyboard will appear, as shown below:



- Use the left, right, up and down keys to move around the keyboard.
- Use the select key to input the highlighted character/number.
- Use the back button to exit the keyboard.

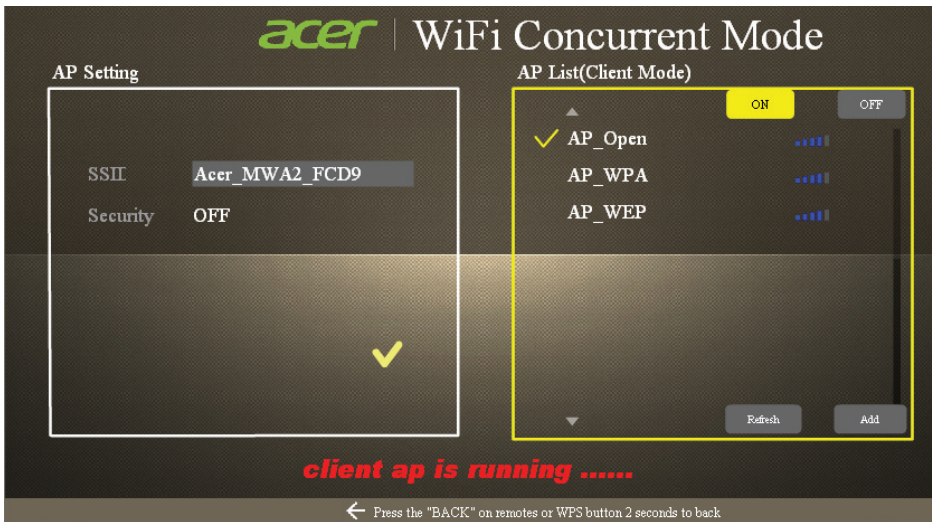
Choosing between Modes

You can select between **AP Mode** or **Client Mode**.

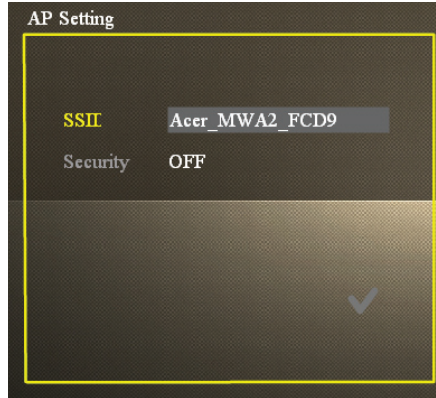
- **AP Mode** makes the MWA2 Wireless Adapter an Access Point that your mobile device can connect to directly.
- **Client Mode** requires that the MWA2 Wireless Adapter connect to another Access Point (which your mobile device should also connect to in order to communicate with the MWA2 Wireless Adapter).

To change the Wi-Fi mode, switch **Client Mode** (right hand column) ON or OFF. When OFF, AP Mode is activated. When ON, Client Mode is activated.

Although the ON and OFF options are next to each other, you need to use your control's up/down keys to select between them. See "Navigating the Network Setting Screen" on page 16 for more information.



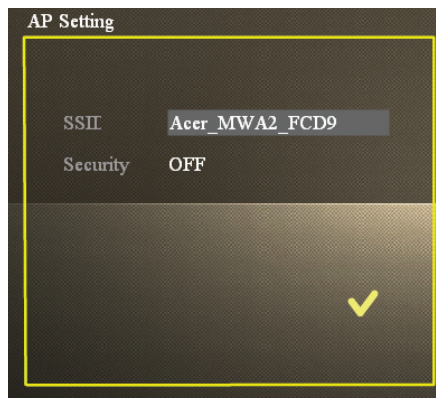
AP Mode



In **AP Mode**, you can edit the following settings:

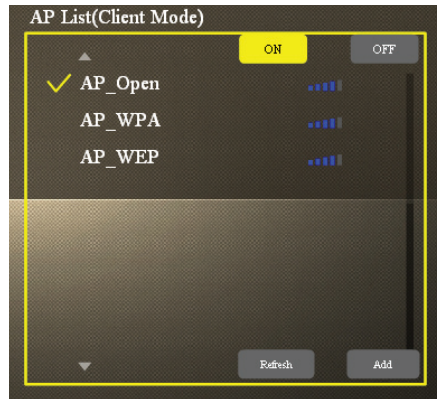
- **SSID (Service Set Identification)** - This is the name you will see when looking for available Access Points from another device.
- **Security** - Switch security ON or OFF. If ON, then a password will be required by any devices trying to connect to the MWA2 Wireless Adapter.
- **PSK (Pre-Shared Key)** - If security is switched ON, this is the password you will be asked to input on your mobile device in order to connect to the MWA2 Wireless Adapter.

To change either of these settings, select their entry field and a virtual keyboard will appear on-screen. When finished typing any values, use the back button to exit that field. Once all fields have been filled, select the tick at the bottom of the screen to confirm (shown below).



Client Mode

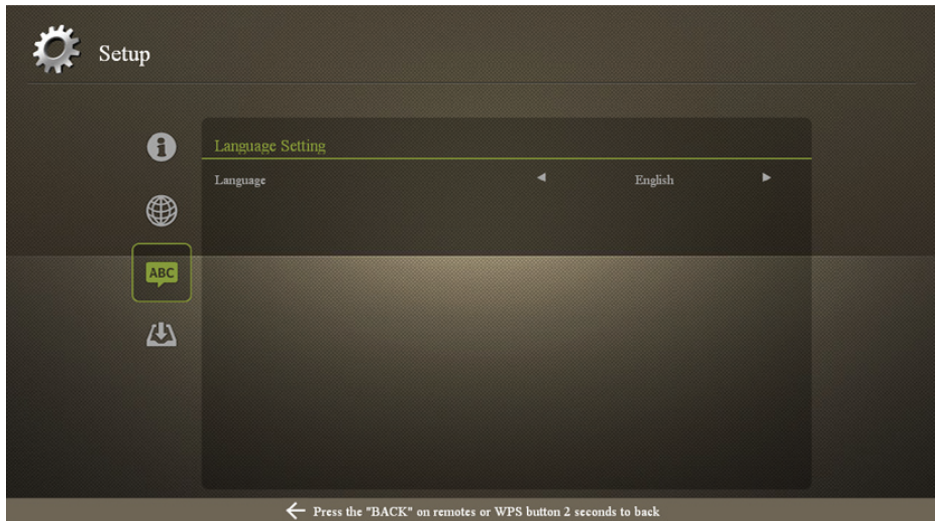
In **Client Mode**, you will see a list of available APs that you can connect your MWA2 Wireless Adapter to, as follows:



1. Ensure Client Mode is set to **ON**.
2. Select an AP from the list shown. (If you do not see the AP you are looking for, try selecting **Refresh**. If the AP is hidden, you can add it manually by selecting **Add** and inputting the necessary details.)
3. If the network requires a password, you will be asked to input the PSK. Highlight the PSK entry field and an on-screen keyboard will appear.
4. Fill in the PSK using the on-screen keyboard.

Changing the Language

To change the language, select **Language Setting**, then scroll right or left until you find your preferred language.

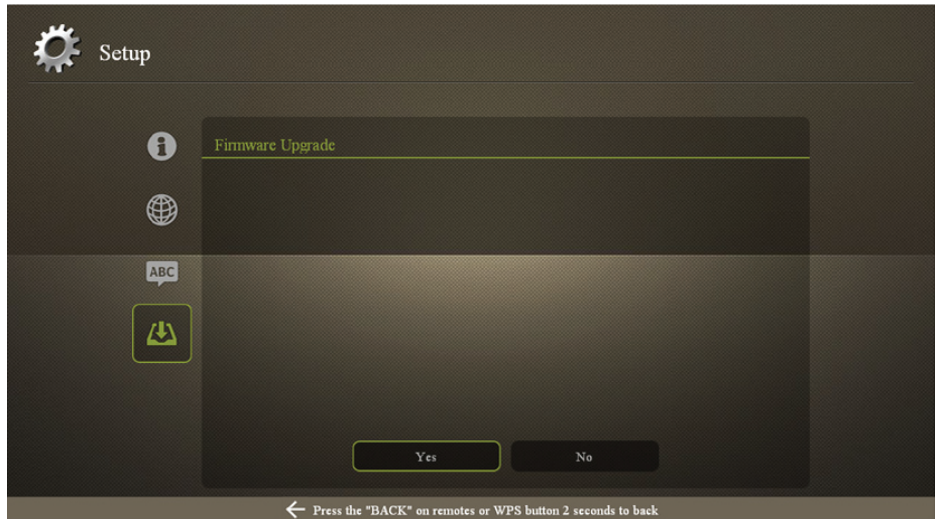


Upgrading the Firmware

Before starting the firmware upgrade process, you must make sure that the MWA Wireless Adapter is connected in Client Mode to an access point with Internet access. For more information on connecting in Client Mode, see “About” on page 15.

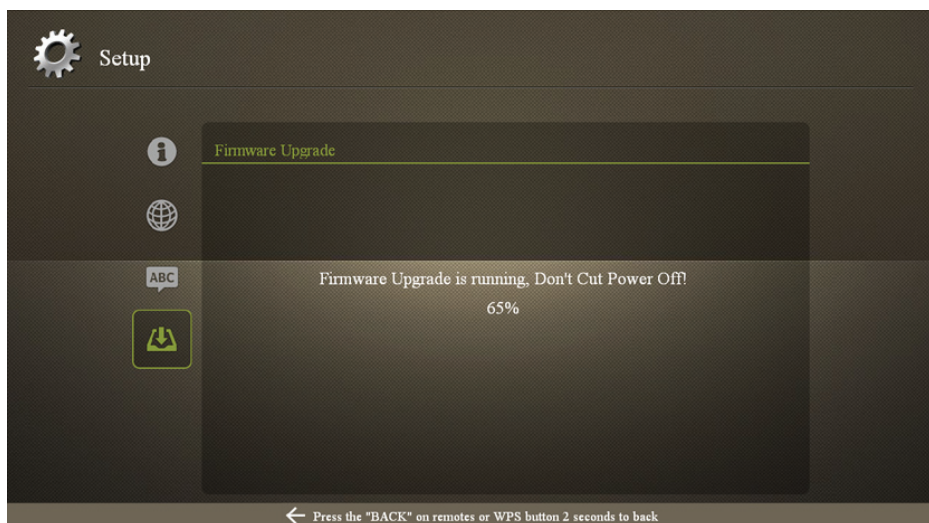
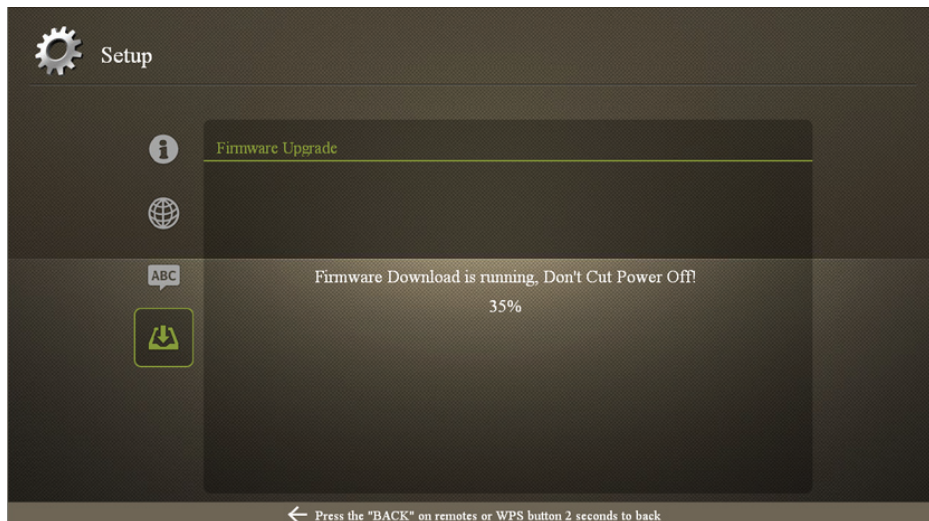
To upgrade the firmware, follow these steps:

1. From the **Setup Screen**, select **Firmware Upgrade**.



2. Select **Yes** to confirm.

3. Wait as the firmware update is downloaded and installed (during this time you will see a progress screen for downloading and then another for installing). Please be patient as the process may take some time.



Caution: Do not turn off the device or unplug the MWA Wireless Adapter at any time during the firmware upgrade.

4. Once the firmware upgrade is complete, the MWA Wireless Adapter will automatically reboot.

Regulatory Information

Federal Communication Commission Interference Statement

This equipment has been tested and found to comply with the limits for a Class B digital device, pursuant to Part 15 of the FCC Rules. These limits are designed to provide reasonable protection against harmful interference in a residential installation. This equipment generates, uses and can radiate radio frequency energy and, if not installed and used in accordance with the instructions, may cause harmful interference to radio communications. However, there is no guarantee that interference will not occur in a particular installation. If this equipment does cause harmful interference to radio or television reception, which can be determined by turning the equipment off and on, the user is encouraged to try to correct the interference by one of the following measures:

- Reorient or relocate the receiving antenna.
- Increase the separation between the equipment and receiver.
- Connect the equipment into an outlet on a circuit different from that to which the receiver is connected.
- Consult the dealer or an experienced radio/TV technician for help.

FCC Caution: Any changes or modifications not expressly approved by the party responsible for compliance could void the user's authority to operate this equipment.

Operation within a 5.15 ~ 5.25GHz frequency range is restricted to indoor environments.

This device complies with Part 15 of the FCC Rules. Operation is subject to the following two conditions: (1) This device may not cause harmful interference, and (2) this device must accept any interference received, including interference that may cause undesired operation.

IMPORTANT NOTE:

Radiation Exposure Statement:

This equipment complies with FCC radiation exposure limits set forth for an uncontrolled environment. This equipment should be installed and operated with a minimum distance of 20cm between the radiator and your body.

This transmitter must not be co-located or operating in conjunction with any other antenna or transmitter.

Note: Country code selection is for non-US models only and is not available on all US models. Per FCC regulation, all Wi-Fi products marketed in the US must be fixed to US operation channels only.

Industry Canada statement:

This device complies with Industry Canada licence-exempt RSS standard(s). Operation is subject to the following two conditions: (1) this device may not cause interference, and (2) this device must accept any interference, including interference that may cause undesired operation of the device.

Le présent appareil est conforme aux CNR d'Industrie Canada applicables aux appareils radio exempts de licence. L'exploitation est autorisée aux deux conditions suivantes: (1) l'appareil ne doit pas produire de brouillage, et (2) l'utilisateur de l'appareil doit accepter tout brouillage radioélectrique subi, même si le brouillage est susceptible d'en compromettre le fonctionnement.

Please add 20cm restriction limit for RF exposure compliance.

Caution:

(i) Devices operating in the 5150-5250 MHz band are for indoor use only to reduce the potential for harmful interference with co-channel mobile satellite systems;

(ii) The maximum antenna gain permitted for devices in the 5250-5350 MHz and 5470-5725 MHz bands shall comply with the e.i.r.p. limit; and

(iii) The maximum antenna gain permitted for devices in the 5725-5825 MHz band shall comply with the e.i.r.p. limits specified for point-to-point and non point-to-point operation as appropriate.

(iv) Users should also be advised that high-power radars are allocated as primary users (i.e. priority users) of the 5250-5350 MHz and 5650-5850 MHz bands and that these radars could cause interference and/or damage to LE-LAN devices.

Avertissement:

Le guide d'utilisation des dispositifs pour réseaux locaux doit inclure des instructions précises sur les restrictions susmentionnées, notamment :

(i) les dispositifs fonctionnant dans la bande 5 150-5 250 MHz sont réservés uniquement pour une utilisation à l'intérieur afin de réduire les risques de brouillage préjudiciable aux systèmes de satellites mobiles utilisant les mêmes canaux;

(ii) le gain maximal d'antenne permis pour les dispositifs utilisant les bandes 5 250-5 350 MHz et 5 470-5 725 MHz doit se conformer à la limite de p.i.r.e.;

(iii) le gain maximal d'antenne permis (pour les dispositifs utilisant la bande 5 725-5 825 MHz) doit se conformer à la limite de p.i.r.e. spécifiée pour l'exploitation point à point et non point à point, selon le cas.

(iv) De plus, les utilisateurs devraient aussi être avisés que les utilisateurs

de radars de haute puissance sont désignés utilisateurs principaux (c.-à-d., qu'ils ont la priorité) pour les bandes 5 250-5 350 MHz et 5 650-5 850 MHz et que ces radars pourraient causer du brouillage et/ou des dommages aux dispositifs LAN-EL.

Radiation Exposure Statement:

This equipment complies with IC radiation exposure limits set forth for an uncontrolled environment. This equipment should be installed and operated with a minimum distance of 20cm between the radiator and your body.

Déclaration d'exposition aux radiations:

Cet équipement est conforme aux limites d'exposition aux rayonnements IC établies pour un environnement non contrôlé. Cet équipement doit être installé et utilisé avec un minimum de 20 cm de distance entre la source de rayonnement et votre corps.

Free Manuals Download Website

<http://myh66.com>

<http://usermanuals.us>

<http://www.somanuals.com>

<http://www.4manuals.cc>

<http://www.manual-lib.com>

<http://www.404manual.com>

<http://www.luxmanual.com>

<http://aubethermostatmanual.com>

Golf course search by state

<http://golfingnear.com>

Email search by domain

<http://emailbydomain.com>

Auto manuals search

<http://auto.somanuals.com>

TV manuals search

<http://tv.somanuals.com>