



Acer USB Type-C Dock II

User's Manual

© 11/2018 All Rights Reserved.

Acer USB Type-C Dock II User's Manual

Covers: ADK810

This revision: 9 November 2018

Changes may be made periodically to the information in this publication without obligation to notify any person of such revision or changes. Such changes will be incorporated in new editions of this manual or supplementary documents and publications. This company makes no representations or warranties, either expressed or implied, with respect to the contents hereof and specifically disclaims the implied warranties of merchantability or fitness for a particular purpose.

Record the model number, serial number, purchase date, and place of purchase information in the space provided below. The serial number and model number are recorded on the label affixed to your docking station. All correspondence concerning your unit should include the serial number, model number, and purchase information.

No part of this publication may be reproduced, stored in a retrieval system, or transmitted, in any form or by any means, electronic, mechanical, photocopy, recording, or otherwise, without the prior written permission of Acer Incorporated.

Model Number: _____

Serial Number: _____

Purchase Date: _____

Place of Purchase: _____

Operation system requirements

Acer USB Type-C dock is supported on the following operating system:

- Microsoft® Windows® 10

In the box

You package includes the following:

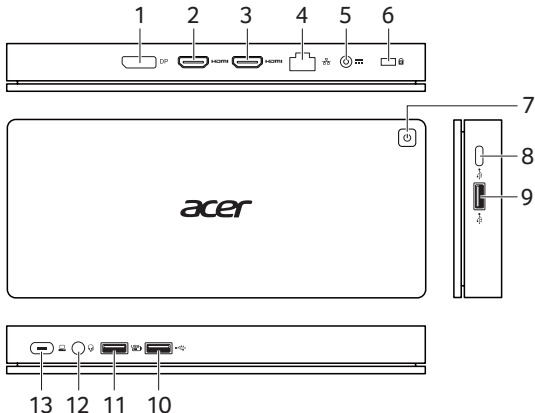
- Acer USB Type-C Dock II
- Acer USB Type-C cable with Type-A converter
- AC power adapter and power cord
- 2-way stand
- Documentation

Ports and connectors











This section describes the ports and connectors of the Acer USB Type-C Dock II.

Note: *You computer must feature a USB Type-C port that supports at the same time the Power Delivery, DP, and data transfer functions.*

Views



#	Icon	Item	Description
1	DP	DisplayPort 1.2 port	Supports high-definition digital video connections.
2	HDMI	HDMI 2.0 port 1	Supports high-definition digital audio/video connections.

#	Icon	Item	Description
3		HDMI 2.0 port 2	Supports high-definition digital audio/video connections.
4		Ethernet (RJ-45) port	Connects to an Ethernet 10/100/1000-based network. <i>Please refer to Advanced Network Features on page 11 for more LAN port features.</i>
5		DC-in jack	Connects to the AC adapter to power the dock. Note: <i>Only use the 135 W power adapter that comes with the dock.</i>
6		Kensington lock	Connects to a Kensington-compatible computer security lock.
7		Power button with indicator	Press to turn your host on and off; the LED also indicates the status of the host. ¹ 1. Pulsing: The dock is on standby. 2. On: The host is on and connected. <i>Please refer to LED Power Indicator behaviour on page 14 for details.</i>
8		USB Type-C port	Connects to USB Type-C devices for data transfer only.
9 / 10		USB 3.0 ports	Connects to USB devices.
11		USB port with BC 1.2 charging	Connects to USB devices and dynamically provides the power current required by the connected device.
12		Headset/speaker jack	Connects to audio devices (e.g., speakers, headphones) or a headset with microphone.
13		Host port USB Type-C port²	Connects to your notebook. Note: <i>If your computer supports charging from its USB port, you can charge your notebook's battery through the Acer USB Type-C Dock II.</i>

Notes on port functionality

- When Acer USB Type-C Dock II has the firmware installed and is connected to the host with specific BIOS setting via the full function UBS Type-C connection, the dock power button mirrors what the host power button does.
- If you connect Acer USB Type-C Dock II to a USB 3.0 port on the host side,
 - Acer USB Type-C Dock II will not support charging to your host.
 - The dock power button will not be able to mirror what the host power button does.
 - The power indicator will not be able to reflect the power status of your host.
- Supported functions with different connection types to the host. (Please refer to *Views on page 4* for the port numbers and their positions.)

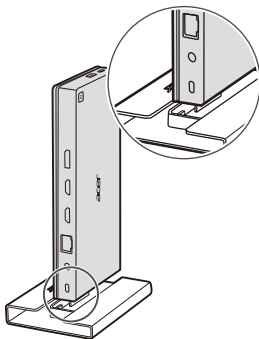
#	Ports on dock	Full function Type-c port on host side	Data only Type-C port on host side	USB 3.0 port on host side
1	DisplayPort	Yes	Yes	Yes
2	HDMI	Yes	Yes	Yes
3	HDMI	Yes		
4	RJ-45	Yes	Yes	Yes
7	Power button	Yes		
8	USB Type-C	Yes	Yes	Yes
9 / 10	USB	Yes	Yes	Yes
11	USB	Yes	Yes	Yes
12	Headset jack	Yes	Yes	Yes

Setting Up

The 2-way stand that comes with Acer USB Type-C Dock II allows you to setup the dock in a space-saving way.

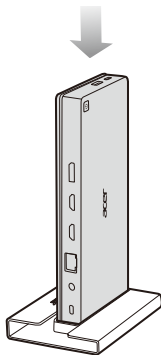
Vertical mode

1



Place the stand on even and steady surface. Arrange the stand and the dock as illustrated. Align the rear side of the dock with the rubber ridge.

2

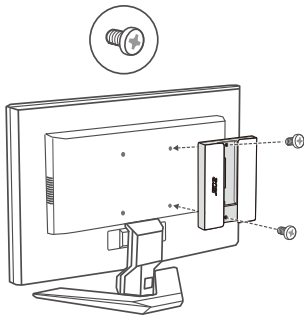


After the ridge is aligned, push the dock down into place.

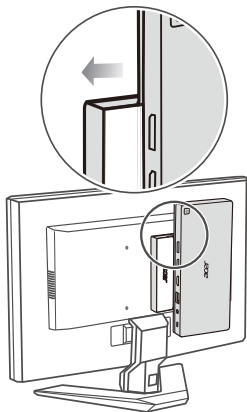
Vesa mount mode

Note: This mode only supports monitors with vesa mounting holes.

1



2



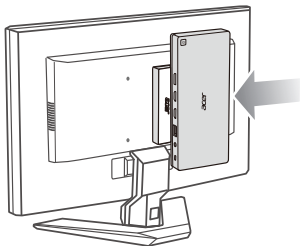
Use the screws that come with the package and screw the dock onto the back of your monitor.

Note: Make sure the hook with Acer logo is on your left.

Hold the dock with Acer logo facing you and the side with 2 ports facing up. Horizontally align the Acer logos on both sides.

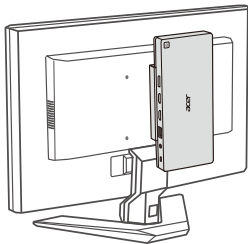
Align the hook on the left of the stand with the slot on the dock.

3



When the hook is in place, push the dock to the left.

4



Make sure the hook is completely inserted into the slot.

Using the dock

Acer USB Type-C Dock II allows you to set up your desk so you can use your notebook with an external keyboard and mouse, and up to three displays.

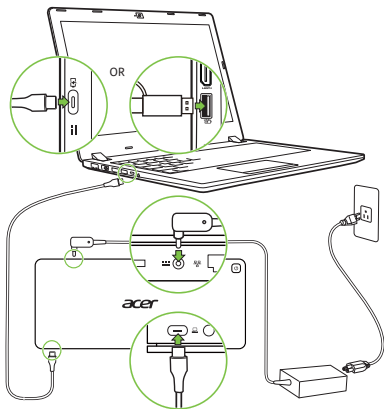
Note: If your computer supports charging from its USB port, you can charge your notebook's battery through the Acer USB Type-C Dock II.

Connecting a notebook to Acer USB Type-C Dock II

Your notebook must support full function USB Type-C connection. A certified Acer notebook is recommended for fullest compatibility.

Note: For optimal compatibility, please download the latest firmware for the dock and drivers for Windows. See *The firmware and driver update kit on page 12.*

1. Lay the dock horizontally on a flat surface or following the previous chapter to setup your dock using the 2-way stand.
2. Plug in the AC adapter. Please use the adapter provided with the dock to achieve the full supported functions.
3. Use the USB Type-C cable to connect your notebook USB Type-C port to the dock. If there is no USB Type-C port on your notebook, you can also use the USB converter that comes with the package connecting to the USB 3.0 port on your notebook.



Note: When the dock is connect to the USB 3.0 on your notebook side, the functions of the dock may be limited.

Note: When using the USB Type-C connector connecting to the dock, gently push it into the tunnel to the port. You will feel a click indicating it is connected.

Disconnecting the notebook

To disconnect your notebook from the dock, simply unplug the USB Type-C cable from your notebook or the dock.

Advanced Network Features

When the dock is connected to a computer and the LAN through the Ethernet (RJ-45) port, the following network functions are supported.

Note: The dock must be connected to the host computer supporting full functions of USB Type-C connection and equipped with specific hardware/firmware/BIOS to achieve full support of the following functions.

- Preboot eXecution Environment
Preboot eXecution Environment technology allows the connected computer (host) with correct BIOS setting to be booted from a server.
- MAC address Pass Through
When this function is enabled, the MAC address of the host can be passed through the dock.
- Wake on LAN from Dock
When this function is enabled, your host can be awakened via the dock LAN port when it is connected to the dock.

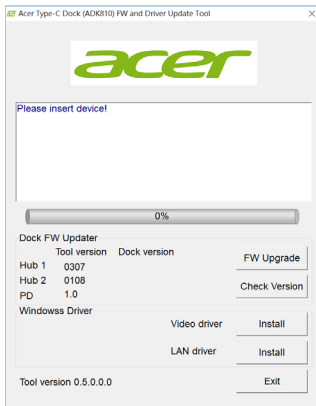
The firmware and driver update kit

Acer provides you a utility for you to check and upgrade the firmware of your dock.

1. Please go to Acer support website by going to <http://go.acer.com/?id=17883>, and look for the utility **Acer Type-C Dock (ADK810) FW and Driver Update Tool**.
2. Click on **Check Version** to check the current firmware version of your dock.
3. When you find the *Dock version* does not match the *Tool version*, please click on **FW Upgrade** to upgrade the firmware.

Note: Do not disconnect the dock form your host nor close the update window when the firmware upgrade is in progress.

4. When the upgrade is finished, click **Exit**, then un-plug and re-plug in the AC adapter.
5. Reboot your system after the drivers are updated.



Multiple Displays Capabilities

Display Configuration	Host Monitor	DP port	HDMI port1	HDMI port2
Video refresh rate		60 Hz	60 Hz	30 Hz
1 display	on	not connected	not connected	not connected
	on	not connected	not connected	not connected
	on	not connected	not connected	not connected
2 displays	on	3840x2160	not connected	not connected
	on	not connected	3840x2160	not connected
	on	not connected	not connected	3840x2160
3 displays	on	3840x2160	3840x2160	not connected
	on	3840x2160	not connected	3840x2160
	on	not connected	3840x2160	3840x2160
4 displays	on	3840x2160	3840x2160	3840x2160
	on	3840x2160	3840x2160	3840x2160
	on	3840x2160	3840x2160	3840x2160

Note: Please refer to page 4 for the position of HDMI port1 and port2.

LED Power Indicator behaviour

Conditions of the dock	Condition of the host		LED behavior
AC not plugged in			Off
AC plugged in	Not connected to the host		Pulsing
	Connected to host via USB 3.0 port		Keep on
	Connected to host via USB Type-C port	Host on	Keep on
		*Host in sleep mode	Pulsing
		*Host in hibernation mode	Off
	*Host off	Off	

Note: These functions are supported when the host has specific BIOS setting and the dock with latest firmware installed.

System requirements

Minimum requirements for full-screen video playback:

- Processor: Intel® Core™ i5 / Intel® Core™ i7
- Memory: 8 GB

Information for your safety and comfort

Safety instructions

Read these instructions carefully. Keep this document for future reference. Follow all warnings and instructions marked on the product.

Turning the product off before cleaning

Unplug this product from the wall outlet before cleaning. Do not use liquid cleaners or aerosol cleaners. Use a damp cloth for cleaning.

Warnings

Accessing the power cord

Be sure that the power outlet you plug the power cord into is easily accessible and located as close to the equipment operator as possible. When you need to disconnect power to the equipment, be sure to unplug the power cord from the electrical outlet.

Disconnecting the power source

Observe the following guidelines when connecting and disconnecting power to the power supply unit:

Install the power supply unit before connecting the power cord to the AC power outlet.

If the system has multiple sources of power, disconnect power from the system by unplugging all power cords from the power supplies.

Using electrical power

- This product should be operated from the type of power indicated on the marking label. If you are not sure of the type of power available, consult your dealer or local power company.
- Do not allow anything to rest on the power cord. Do not locate this product where people will walk on the cord.

- If an extension cord is used with this product, make sure that the total ampere rating of the equipment plugged into the extension cord does not exceed the extension cord ampere rating. Also, make sure that the total rating of all products plugged into the wall outlet does not exceed the fuse rating.
- This product's AC adapter is equipped with a three-wire grounded plug. The plug only fits in a grounded power outlet. Make sure the power outlet is properly grounded before inserting the AC adapter plug. Do not insert the plug into a non-grounded power outlet. Contact your electrician for details.

Warning! The grounding pin is a safety feature. Using a power outlet that is not properly grounded may result in electric shock and/or injury.

Note: The grounding pin also provides good protection from unexpected noise produced by other nearby electrical devices that may interfere with the performance of this product.

- The system can be powered using a wide range of voltages; 100 to 120 or 220 to 240 V AC. The power cord included with the system meets the requirements for use in the country/region where the system was purchased. Power cords for use in other countries/regions must meet the requirements for that country/region. For more information on power cord requirements, contact an authorized reseller or service provider.

Protecting your hearing

Warning: Permanent hearing loss may occur if earphones or headphones are used at high volume for prolonged periods of time.



To protect your hearing, follow these instructions.

- Increase the volume gradually until you can hear clearly and comfortably.
- Do not increase the volume level after your ears have adjusted.
- Do not listen to music at high volumes for extended periods.
- Do not increase the volume to block out noisy surroundings.
- Decrease the volume if you can't hear people speaking near you.

General

- Do not use this product near water.
- Do not place this product on an unstable cart, stand or table. If the product falls, it could be seriously damaged.
- Slots and openings are provided for ventilation to ensure reliable operation of the product and to protect it from overheating. These openings must not be blocked or covered. The openings should never be blocked by placing the product on a bed, sofa, rug or other similar surface. This product should never be placed near or over a radiator or heat register, or in a built-in installation unless proper ventilation is provided.
- Never push objects of any kind into this product through cabinet slots as they may touch dangerous voltage points or short-out parts that could result in a fire or electric shock. Never spill liquid of any kind onto or into the product.
- The bottom surface, areas around ventilation openings and AC adapter may get hot. To avoid injury, ensure they do not come in contact with your skin or body.
- Your device and its enhancements may contain small parts. Keep them out of the reach of small children.

Product servicing

Do not attempt to service this product yourself, as opening or removing covers may expose you to dangerous voltage points or other risks. Refer all servicing to qualified service personnel.

Unplug this product from the wall outlet and refer servicing to qualified service personnel when:

- The power cord or plug is damaged, cut or frayed.
- Liquid was spilled into the product.
- The product was exposed to rain or water.
- The product has been dropped or the case has been damaged.
- The product exhibits a distinct change in performance, indicating a need for service.
- The product does not operate normally after following the operating instructions.

Note: Adjust only those controls that are covered by the operating instructions, since improper adjustment of other controls may result in damage and will often require extensive work by a qualified technician to restore the product to normal condition.

Disposal instructions

Do not throw this electronic device into the trash when discarding.

To minimize pollution and ensure utmost protection of the global environment, please recycle. For more information on the Waste from Electrical and Electronics Equipment (WEEE) regulations, visit www.acer-group.com/public/Sustainability/sustainability01.htm



Tips and information for comfortable use

Computer users may complain of eyestrain and headaches after prolonged use. Users are also at risk of physical injury after long hours of working in front of a computer. Long work periods, bad posture, poor work habits, stress, inadequate working conditions, personal health and other factors greatly increase the risk of physical injury.

Incorrect computer usage may lead to carpal tunnel syndrome, tendonitis, tenosynovitis or other musculoskeletal disorders. The following symptoms may appear in the hands, wrists, arms, shoulders, neck or back:

- Numbness, or a burning or tingling sensation.
- Aching, soreness or tenderness.
- Pain, swelling or throbbing.
- Stiffness or tightness.
- Coldness or weakness.

If you have these symptoms, or any other recurring or persistent discomfort and/or pain related to computer use, consult a physician immediately and inform your company's health and safety department.

The following section provides tips for more comfortable computer use.

Finding your comfort zone

Find your comfort zone by adjusting the viewing angle of the monitor, using a footrest, or raising your sitting height to achieve maximum comfort. Observe the following tips:

- Refrain from staying too long in one fixed posture.
- Avoid slouching forward and/or leaning backward.
- Stand up and walk around regularly to remove the strain on your leg muscles.
- Take short rests to relax your neck and shoulders.
- Avoid tensing your muscles or shrugging your shoulders.
- Install the external display, keyboard and mouse properly and within comfortable reach.
- If you view your monitor more than your documents, place the display at the center of your desk to minimize neck strain.

Taking care of your vision

Long viewing hours, wearing incorrect glasses or contact lenses, glare, excessive room lighting, poorly focused screens, very small typefaces and low-contrast displays could stress your eyes. The following sections provide suggestions on how to reduce eyestrain.

Eyes

- Rest your eyes frequently.
- Give your eyes regular breaks by looking away from the monitor and focusing on a distant point.
- Blink frequently to keep your eyes from drying out.

Display

- Keep your display clean.
- Keep your head at a higher level than the top edge of the display so your eyes point downward when looking at the middle of the display.
- Adjust the display brightness and/or contrast to a comfortable level for enhanced text readability and graphics clarity.
- Eliminate glare and reflections by:

- Placing your display in such a way that the side faces the window or any light source.
- Minimizing room light by using drapes, shades or blinds.
- Using a task light.
- Changing the display's viewing angle.
- Using a glare-reduction filter.
- Using a display visor, such as a piece of cardboard extended from the display's top front edge.
- Avoid adjusting your display to an awkward viewing angle.
- Avoid looking at bright light sources for extended periods of time.

Developing good work habits

The following work habits make computer use more relaxing and productive:

- Take short breaks regularly and often.
- Perform some stretching exercises.
- Breathe fresh air as often as possible.
- Exercise regularly and maintain a healthy body.

Warning! We do not recommend using the computer on a couch or bed. If this is unavoidable, work for only short periods, take breaks regularly, and do some stretching exercises.

Note: For more information, please refer to "**Regulations and safety notices**" on page 21.

Regulations and safety notices

FCC statement

This device has been tested and found to comply with the limits for a Class B digital device pursuant to Part 15 of the FCC rules. These limits are designed to provide reasonable protection against harmful interference in a residential installation. This device generates, uses, and can radiate radio frequency energy and, if not installed and used in accordance with the instructions, may cause harmful interference to radio communications.

However, there is no guarantee that interference will not occur in a particular installation. If this device does cause harmful interference to radio or television reception, which can be determined by turning the device off and on, the user is encouraged to try to correct the interference by one or more of the following measures:

- Reorient or relocate the receiving antenna.
- Increase the separation between the device and receiver.
- Connect the device into an outlet on a circuit different from that to which the receiver is connected.
- Consult the dealer or an experienced radio/television technician for help.

Notice: Shielded cables

All connections to other computing devices must be made using shielded cables to maintain compliance with FCC regulations.

Notice: Peripheral devices

Only peripherals (input/output devices, terminals, printers, etc.) certified to comply with the Class B limits may be attached to this equipment. Operation with non-certified peripherals is likely to result in interference to radio and TV reception.

Caution

Changes or modifications not expressly approved by the manufacturer could void the user's authority, which is granted by the Federal Communications Commission, to operate this computer.

Notice: Canadian users

This Class B digital apparatus complies with Canadian ICES-003.

Remarque à l'intention des utilisateurs canadiens

Cet appareil numérique de la classe B est conforme à la norme NMB-003 du Canada.

Compliant with Russian regulatory certification



ME61

Declaration of Conformity for EU countries

Hereby, Acer, declares that this computer is in compliance with the essential requirements and other relevant provisions of Directive 1999/5/EC.

List of National Codes

This equipment may be operated in the following countries:

Country	ISO 3166 2 letter code	Country	ISO 3166 2 letter code
Austria	AT	Malta	MT
Belgium	BE	Netherlands	NT
Cyprus	CY	Poland	PL
Czech Republic	CZ	Portugal	PT
Denmark	DK	Russian	RU
Estonia	EE	Slovakia	SK
Finland	FI	Slovenia	SL
France	FR	Spain	ES
Germany	DE	Sweden	SE
Greece	GR	United Kingdom	GB
Hungary	HU	Iceland	IS
Ireland	IE	Liechtenstein	LI
Italy	IT	Norway	NO
Latvia	LV	Switzerland	CH
Lithuania	LT	Bulgaria	BG
Luxembourg	LU	Romania	RO
		Turkey	TR

Operating environment

- Temperature: 5 °C to 35 °C
- Humidity (non-condensing): 20% to 80%

Storage and Transporting environment

The product is recommended to be transported in the original packaging and stored under the following conditions:

- Temperature: -20 °C to 60 °C
- Humidity (non-condensing): 20% to 60%

Specification

Color Options	Black only
Dimensions and weight	Dimensions 204 (W) x 87 (D) x 23.9 (H) mm (8.03 x 3.42 x 0.94 inches)
	Weight 250 g (0.55 lbs.)
Display	DP V1.2 (DP port Daisy Chain not supported) HDMI V2.0 (Supports HDCP) Max. resolution: 3842 x 2160 @ 60 Hz Display mode: extension and mirror for triple displays simultaneously (please refer to <i>page 13</i>), 3840 x 2160@60 Hz (DP) + 3840 x 2160@60 Hz (HDMI) + 3840 x 2160@30 Hz (HDMI/Alt-mode)
Audio	Supports 3.5 mm 4-position TRRS headset
Networking	Ethernet Giga Lan 10/100/1000
Power delivery profiles	Supports: 5 V / 3 A, 9 V / 3 A, 12 V / 3 A, 15 V / 3 A, 19 V / 3 A, and 20 V / 3 A
USB Type-C ports	UFP (to host): USB 3.1 Gen1/DP/Power Delivery (60 W) DFP (for device): USB 3.1 Gen1
USB Type-A ports	USB 3.1 Gen1 (5 Gbps) 5 V / 0.9 A One support BC1.2 charging 5 V / 1.5 A
Power adapter	3-pin Acer® 135 W AC adapter
Security	Kensington lock slot

Manufacturer:

Acer Inc.

8F, 88, Sec. 1, Xintai 5th Rd. Xizhi, New Taipei City 221, Taiwan



Free Manuals Download Website

<http://myh66.com>

<http://usermanuals.us>

<http://www.somanuals.com>

<http://www.4manuals.cc>

<http://www.manual-lib.com>

<http://www.404manual.com>

<http://www.luxmanual.com>

<http://aubethermostatmanual.com>

Golf course search by state

<http://golfingnear.com>

Email search by domain

<http://emailbydomain.com>

Auto manuals search

<http://auto.somanuals.com>

TV manuals search

<http://tv.somanuals.com>