



EZScan 1000 Film Scanner



Model: EZScan 1000

QuickGuide English

www.adesso.com

1

LIMITED WARRANTY

Adesso provides a one year limited warranty for all of its products against defects in material and workmanship.

During this period, Adesso will repair or replace any product which proves to be defective. However, Adesso will not warranty any product which has been subject to improper freight handling, shipping abuse, neglect, improper installation or unauthorized repair. The warranty will not cover products installed with components not approved by Adesso and products where the sealed assembly trace has been broken.

If you discover a defect, Adesso will, at its option, repair or replace the product at no charge to you provided you return it during the warranty period with freight charges pre-paid to Adesso. Before returning any product, you must obtain a Return Merchandise Authorization number (RMA). This RMA # must be clearly marked on the outside of the package you are returning for warranty service. Be certain to also include your name, shipping address (no PO Boxes), telephone number, and a copy of the invoice showing proof of purchase in the package.

SUPPORT

We have listed most of our FAQ's (Frequently Asked Questions) at: <http://www.adesso.com/faqs.asp>. Please visit our FAQ Service & Support pages before you contact our E-mail or Telephone Support.

Email Support: If our FAQ's do not help you resolve your issues, please email support@adesso.com

Telephone Support:
Toll Free: (800) 795-6788
9:00AM to 5:00PM PST Monday - Friday

2

INSTALLATION

Attention
Before performing the driver/software installation ensure your scanner is **NOT CONNECTED** to your computer.

1. Insert the Software CD into your CD-ROM drive.



Note: If the Installation Wizard does not start or display automatically, please double click "install.exe" from the root of CD-ROM.

2. When the Installation Wizard window is displayed click on "Install the Software" button.

3. Next, click on the "Install" button to start the installation.

4. Then click on the "Next" button in the window that appears.

5. If there is a message asking you to install device software, click the "Install" button.

6

Insert Film Holder into Scanner

Insert the film holder into the scanner through dust cover slots. The film holder can be inserted from either side. The film holder will index at each frame using the notches on its side rails.



Attention

- To ensure film is scanned properly, verify that your slide/film holder is inserted correctly (see page 9).
- The film holder should be inserted into the scanner smoothly. Do not push the film holder hard or use extreme force, this will damage scanner.
- When film holder is inserted into scanner it will stop at index positions, before performing scan gently push and pull the film holder to make sure the film holder has correctly landed in an index position.

10

INTRODUCTION

With the Adesso Film Scanner quickly and easily convert old filmstrips and slides to digital images for instant sharing or digital storage. This film scanner conveniently connects to your computer via USB connection and is USB bus powered, meaning no additional power supply cable is needed, the same USB connection to your computer powers the digital film scanner. The Adesso Film Scanner is extremely user-friendly, just press the one-touch button and film photographs are instantly scanned and on your computer screen in high quality 1800 DPI images. The Adesso Film Scanner is also lightweight and portable so you can use anywhere. Sharing your film photographs digitally is only a click away, start enjoying with family and friends today!

SPECIFICATIONS

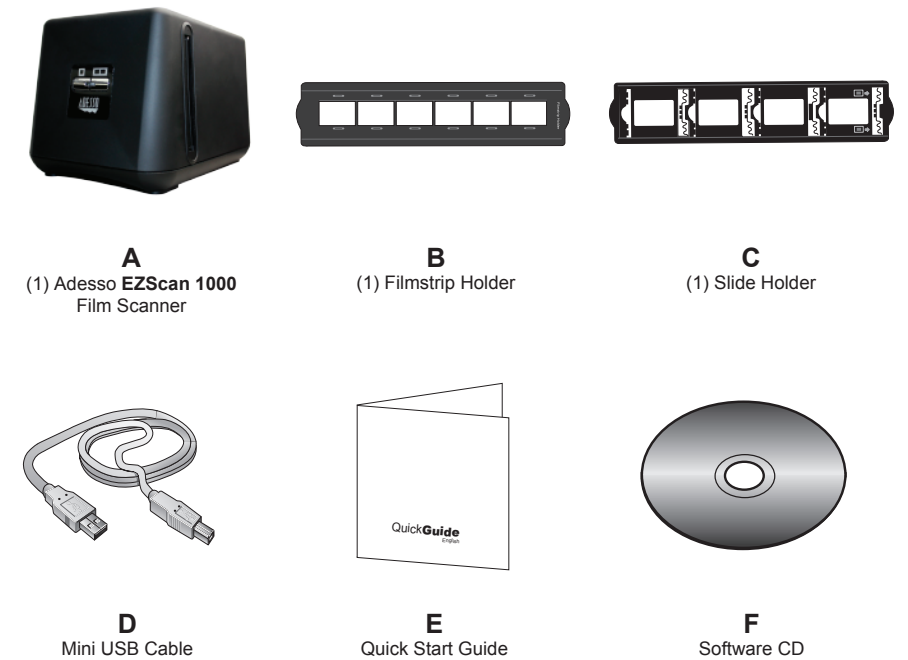
Scanning Type: Image Capture CMOS
Optical Resolution: 1800 DPI
Software Interpolation: 3600 DPI x 3600 DPI (5-Megapixels)
Color Depth: 24 bit/pixel
Preview/ Scan Speed: Approx 8 sec (600 DPI)
Action Button: Transparency & Negative Scan
Scan Method: Single Pass
Protocols: TWAIN Compliant
Interface: USB 2.0 Only

REQUIREMENTS

Processor: PC: IBM Compatible PC with Pentium III or higher
Mac: PPC G4, PPC G5 Intel
Memory: 512 MB RAM and 500 MB Free HDD Space
Operating System: Windows® 7, Windows® Vista, Windows® XP & Windows® 2000
Mac® 10.4, 10.5 & 10.6
Connectivity Interface: USB 2.0 Port
Others: High Color Graphic Card (VGA or higher)
CD-ROM Drive (for Software Installation)

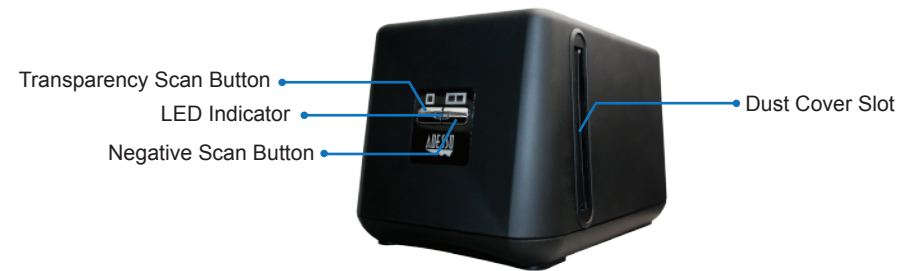
3

CONTENTS



4

Scanner User Interface

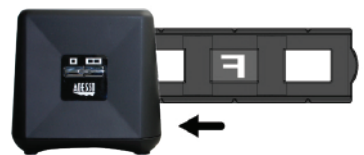


- LED Indicator:** Indicates the scanner status.
On: The scanner is connected with the computer and ready for film scanning.
Off: The scanner is off, either because scanner is disconnected from computer or because the computer is turned off.
- Transparency or Negative Scan Button:** A simple touch on the scanner Transparency or Negative Scan Buttons enables you to conveniently scan the slide or filmstrip on holder, and automatically save the digital image file on your computer.
- Dust Cover Slot:** Insert the film holder into the scanner through dust cover slot. The film holder can be inserted from either side. The film holder will index at each frame using the notches on its side rails.

5

Attention
Before scanning read instructions below for best results.

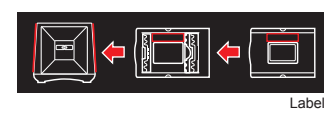
• Always turn the film emulsion (non-glossy) side facing towards the front of scanner and glossy side facing the back of the scanner (where USB cord is located).



• On slide/filmstrip holder edge you can see 'Mounted Slide Holder' or 'Filmstrip Holder' text, always keep this side facing towards the back of the scanner (where USB cord located).



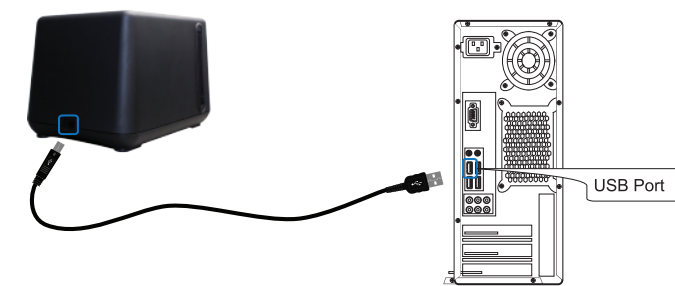
• On slide/filmstrip holder edge there is a small label with slide/filmstrip holder inserting instructions, this label should always face towards front of scanner.



9

6. Click "Install this driver and software anyway" (Windows 7 or Vista) or "Continue Anyway" (Windows XP or 2000) when Windows® message is displayed during the installation process.

7. Next a window will be displayed asking you to connect scanner. Plug the smaller end of the included mini USB cable to the back of the scanner and plug the bigger end of the USB cable to the USB port on your computer.



7

8. When your computer recognizes scanner, return to the original window that asked you to connect scanner and click "OK".

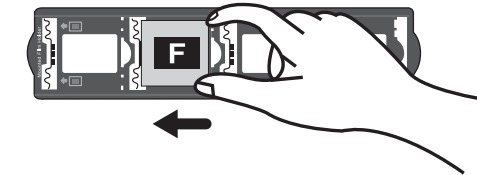
9. Click "Finish" to complete the driver installation.

10. Restart your computer after the installation is completed.

8

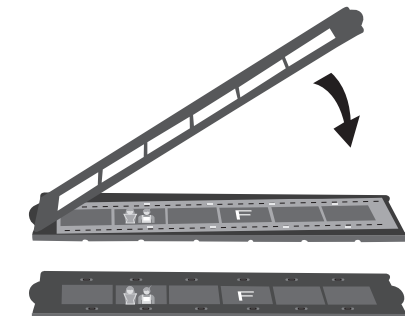
Using Mounted Slide Holder

To scan 35mm mounted slides (max 4 slides): Insert mounted slides into slots with emulsion (non-glossy) side down. There are arrows and illustrations on the frame of each slot. Please follow illustrations to insert mounted slides.



Using Filmstrip Holder

To scan 35mm filmstrips (max 6 frames): Open filmstrip holder and place filmstrip in the film holder with emulsion (non-glossy) side down. Then snap the film holder cover closed.

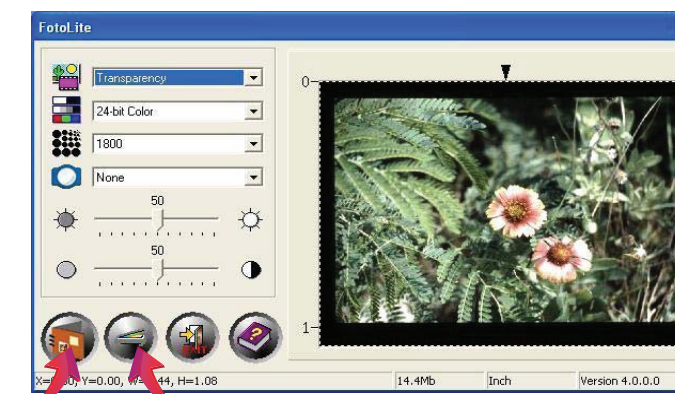


8

Converting Film to Digital Files

1. Press either Transparency or Negative scan button on the EZScan 1000 and the FotoLite screen will be displayed as seen below.

Note: FotoLite software must be active and showing in Windows® tray so buttons will launch scanning software (to open software please see page 11).



2. Click "Preview" icon to see image on screen, then once selection area is set click "Scan" icon. The scanned image(s) will be saved in the "Destination Folder" selected under "Preference Settings" of FotoLite.

11

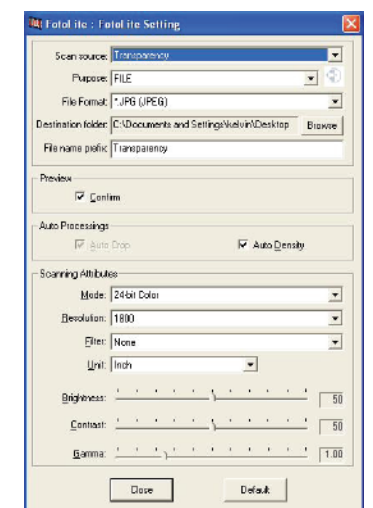
FotoLite Setting (Optional)

1. Double click on the FotoLite icon located on the Windows system tray or right click the FotoLite icon and select "Properties".



Note: If the FotoLite icon is not in your Windows system tray, go to your computer's START menu, then Programs, find EZScan 1000 folder and select FotoLite software.

2. The FotoLite Setting window will appear. You can apply customized settings of your choice or leave default.



3. Click "Done" when complete or "Default" to return settings to original default settings.

12

Free Manuals Download Website

<http://myh66.com>

<http://usermanuals.us>

<http://www.somanuals.com>

<http://www.4manuals.cc>

<http://www.manual-lib.com>

<http://www.404manual.com>

<http://www.luxmanual.com>

<http://aubethermostatmanual.com>

Golf course search by state

<http://golfingnear.com>

Email search by domain

<http://emailbydomain.com>

Auto manuals search

<http://auto.somanuals.com>

TV manuals search

<http://tv.somanuals.com>