

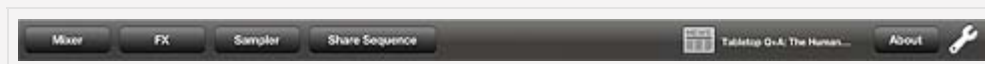
# USER GUIDE: MAIN INTERFACE



Welcome to iMPC! The main interface recreates the look, feel, and some of the key workflows of the famous MPC line of drum machine samplers.

From this screen, everything you need to play and record sequences and programs is available at your fingertips. You can also access the other major areas of the App from here.

## Title Bar



### Mixer

Tap to open the Mixer panel. The mixer allows you to mix the tracks of each sequence. For details, see [Mixer](#).

### FX

Tap to open the Effects screens. Effects add extra audio variation to the tracks of each sequence. For details, see [FX](#).

### Sampler

Tap to enter the sampler and create new samples. You can sample from the iPad mic, line-in, or anything in your Music Library! For details, see [Sampler](#).

### Share Sequence

Share your beats online — you can upload your current sequence directly to the iMPC Community if your iPad is connected to the internet. Tapping “Share Sequence” starts the SoundCloud upload process and also creates a mixdown wav for iTunes export and AudioCopy.

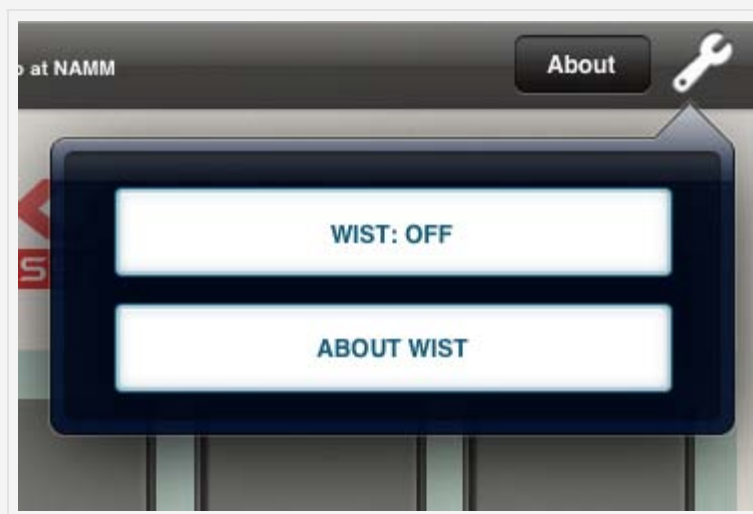
### iMPC Community feed

The feed displays the latest headlines, posts, and activity on beats you’ve shared online. For Details, see [iMPC Community](#)

### About

Opens the information page and provides access to the user guide.

### Settings



The Settings menu provides access to WIST. WIST is a Wireless Sync-Start Technology that connects two devices with WIST-Compatible Apps. WIST requires Bluetooth, and if it’s not currently enabled on your iPad, you will be prompted to turn it on. You can also manually enable Bluetooth in your iPad’s native Settings app, under General > Bluetooth.

Tap the WIST button to enable WIST. When you enable WIST in iMPC, a dialog will then appear as WIST searches for other devices running compatible apps. Any secondary device needs to confirm the WIST connection before the devices will be properly synchronized. Once connected, the slaved device will be set to a matching tempo, and will start playback in sync with the Master.

---

## Main Vol



Adjusts the output volume.

---

## Pads



The heart and soul of the MPC! 16 Pads each with a sound. Tap, hold bang on these to play the sounds of your current Program.

---

## Data Screen



Displays information about the current **Sequence**, **Track** and **Program**.

Each **Sequence** has four **Tracks**. Each **Track** can have a different **Program** (i.e. a Drum Kit).

Open a the **Sequence Menu** by tapping the list button to the left of the current Sequence. The Edit button to the right of the current Sequence will open the **Sequence Details screen**.



Tap the arrows above and below the Track number to move between tracks. Each track can have a different Program, which you can assign by opening the Program Menu. The Edit button to the right of the current Program will open the **Program Editor**.

## PERFORMANCE CONTROLS

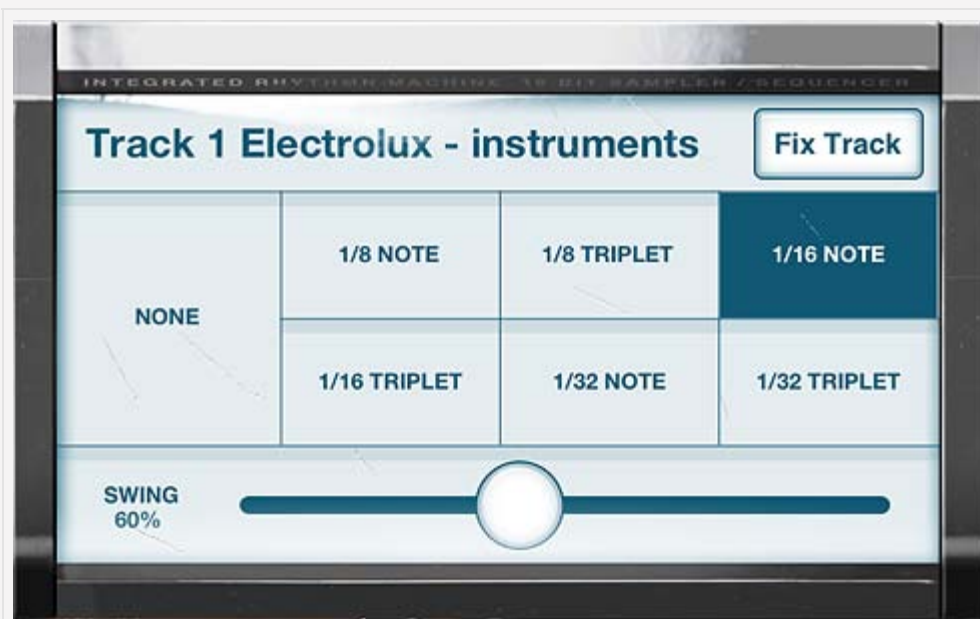
The controls in this section all have to do with performing on pads and playing Sequences



## Data wheel

The data wheel is a continuous/jog wheel that scrolls through the sequences. Turn the wheel clockwise to advance the Sequence, counter-clockwise to move to a previous Sequence. Try this during playback to queue up different sequences in succession. iMPC will wait to start playing a new sequence until the previous sequence has finished. Use this to string together Sequences in order for a real-time performance.

## Time Correct



Time Correct will automatically fix your recorded patterns to a set timing

interval. As you record, your notes will be fixed to the selected interval of 1/8, 1/8T, 1/16, 1/16T, 1/32, or 1/32T notes. If you Set Time Correct to NONE, your notes will be recorded exactly as you played them.

You can also fix notes after recording with the “Fix Track” button. Tapping this will fix all notes in the current Sequence and Track to the selected interval.

*Note:* While the Time Correct Values are set globally for the App, no changes are applied until you record something or use “Fix Track”. This means Track and Sequences can have notes fixed to different intervals, etc. You can even record different parts of the same track with different Time Correct Settings!

## Swing

Swing is a value between 50 and 75%. As you increase it, your Time-Corrected beat will swing more. Experiment with this to create jazzy beats and hip hip vibes.

---

## Note Repeat

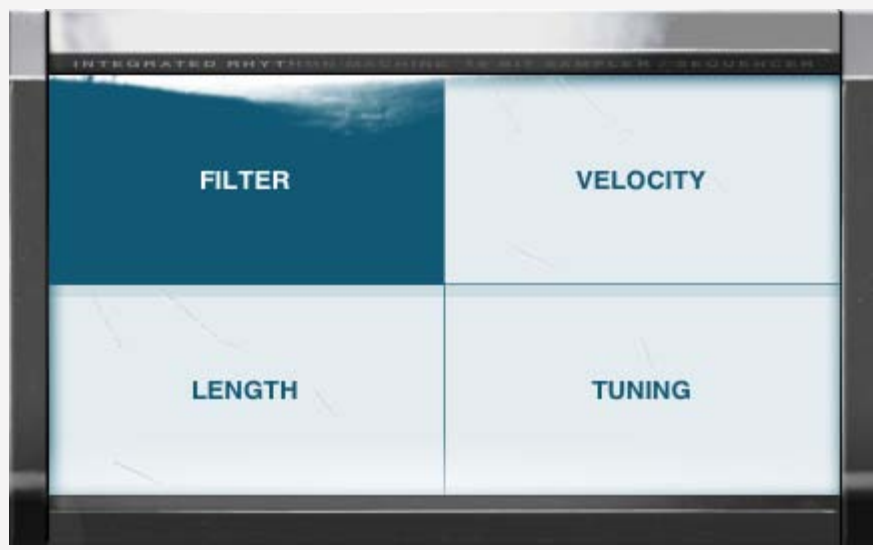


Note Repeat plays whatever pads you’re holding down at the selected interval. Hold the Note Repeat button, and then play pads to try it out.

*Tip:* You can “latch” the Note Repeat button so you can play pads without having to hold it down: while holding note repeat, move your finger to the right. To release it, simply tap it again.

---

## 16 Levels



16 Levels is a famous MPC feature that allows you to use all 16 Pads to alter parameters of one Sound. You can use this to play melodic baselines, create interesting dynamic variations, and more.

To use 16 Levels, play a pad then press the “16 Levels” button. Now all 16 Pads will play the selected Sound at one of 16 distinct values for the selected Parameter. Experiment with with all four Parameters:

- Filter
- Velocity
- Length
- Tuning

*Tip:* The “natural” value of the selected Param is always on Pad 4.

---

## Variation Slider



The Variation Slider affects the same four Parameters that 16 levels does, but on a smoothly sliding scale. This lets you create subtle variations while recording. Touch the Slider to alter the selected Parameter on the Data screen.

Experiment with using the variation slider in conjunction with 16 Levels and Note Repeat!

---

## Erase

The Erase button lets you easily remove notes from a Track. Hold down Erase and Tap or Hold pads during playback to erase notes. You can also erase the entire track: hold down the Erase button, and press “Erase Track” on the Data Screen.

---

## Undo

After recording, the Undo button will light up; tapping it discards the last recorded take.

## TRANSPORT CONTROLS



Tap to rewind or fast-forward by one bar.



Tap to rewind or fast-forward by one beat.

### Tap Tempo

Sets the tempo based on the speed at which you tap the button. Tap Twice!

### Record

Press and hold this button, and the Play or Play Start button to start recording. While Recording, any previously recorded notes on the current Track will be erased (imagine a tape recorder).



**Overdub**

Press and hold this button and the Play or Play Start to start Overdubbing. While Overdubbing, any previously recorded notes on the current Track will be preserved.

**Stop**

Stops audio playback.

**Play**

Starts audio playback from the current position.

**Play Start**

Starts audio playback from the start of the Sequence.

[< CREDITS](#)

[TABLE OF CONTENTS](#)

[PROGRAM EDITOR >](#)

## USER GUIDE: PROGRAM EDITOR



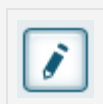
The Program Editor is where you can edit the samples for each of the pads in the program and adjust their parameters.

There are two ways to open the program menu:

- From the LED display in the Main UI tap the pencil button to the right of the program name.
- From the Program menu tap the Edit button at the bottom of the menu.

### *Rename*

Tap the edit button to the left of the title to open the keyboard and rename the program.



---

## Edit Menu

Tap a pad to select it; selected pads are bright green.

PAD 7



PAD 8



Select Edit to adjust the parameters for a selected pad.

Edit

Sound Library



PLAY MODE

Hold

SAMPLE NEW SOUND



*Level*

Adjusts the volume for the pad.

*Tune*

Adjusts the pitch of the sample.

Tap the Cntr button on either of these parameters to bring the control back to the default value.

*Play Mode*

One-Shot plays the entire sample back when you tap the pad.

PLAY MODE



Hold mode plays the sample only for as long as you hold the pad.

PLAY MODE



### *Sample New Sound*

Opens the **Sampler**. If a pad is selected, the sample will save directly to that pad.

---

## Sound Library

The Sound Library opens the menu providing access to factory sounds and samples imported via iTunes or created with iMPC's sampler. There is also the option of viewing sounds according to the Program they're a part of.

To import samples using iTunes file transfer, open iTunes, click your iPad under Devices in the left-hand menu, and open the Apps tab. At the bottom of the page where it says File Sharing, click on iMPC's icon, and click the Add button at the bottom of the right-hand menu. Select the files you want to import from your computer, tap Open, and they'll automatically be synced to the app.

### *Sample Drag Behavior*

- To add a sample to a pad, simply drag the sound from the menu directly to a pad.
- Dragging a sample from one pad to another copies the sample from the first pad to any subsequent pad.
- Drag a sample from the pad off the screen to delete the sample from the pad.

## USER GUIDE: SEQUENCE AND PROGRAM MENUS

The sequence and program menus in the expanded LED screen provide the editorial functions. Access both of these menus by tapping the menu button under the sequence and program title text.

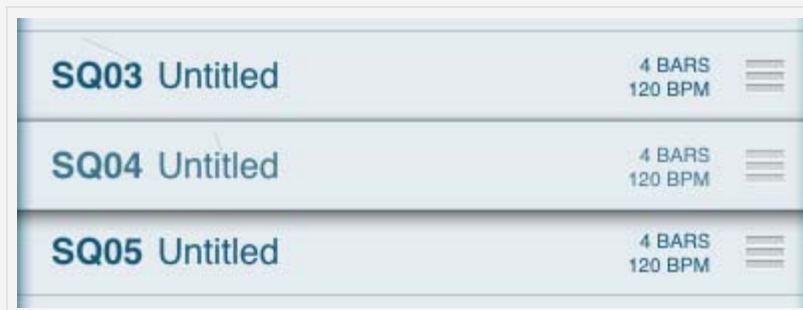
---

### Sequence Menu

The Sequence Menu displays a list of all your Sequences. Select a sequence during another's playback to queue that sequence to play next. The queued sequence blinks in the data screen, and once the current sequence is finished the next starts. Use this feature to create dynamic performances and string together a song in real time.



### Reorder



Tap Reorder to rearrange the sequence list. Tapping this button causes a set of three parallel lines to appear to the right of sequence title. Press and hold this button then drag the sequence to its desired position in the list.

### New

Creates a new empty sequence.

*Tip:* New Sequences are created with the properties of the currently selected

Sequence. This is helpful for creating a brand new groove with a favorite sound set.

### **Clone**

Creates a copy of the selected sequence.

### **Export**

Export the current Sequence to a variety of formats. Start a beat on iMPC, and take it to MPC Desktop Software to use with MPC Renaissance or Studio!

*Share on SoundCloud* Uploads the Sequence to SoundCloud and the **iMPC Community**.

*Export .wav to iTunes* Creates a mixdown .wav file. You can copy this file from your iPad to your Desktop Computer. See **iTunes File Sharing**.

*Export to MPC Desktop* Exports the full Sequence, complete with note and parameter data, along with your custom Programs and Samples to use in MPC Desktop software. Exported Sequences appear as folders in iTunes. See **iTunes File Sharing**.

### **Edit**

Opens the Sequence details screen (see below).

### **Delete**

Deletes the Sequence.

---

## **Sequence Details**





### **Rename**

Tap the edit button next to the title to rename the sequence.

### **Cancel**

Exits the Sequence Details screen without saving changes.

### **Save**

Saves the sequence settings, closes the screen, and returns to the sequence menu.

### **Beats Per Minute**

Tap the – or + buttons to decrease or increase the tempo. Tap the Tap Tempo button at a constant rate to set the tempo.

### **Bars**

Decrease or increase the number of bars by tapping the – and + buttons. Tap the Duplicate Bars button to double the current number of bars, copying all recorded data in the sequence.

---

## **Program Menu**

Tap the menu button to the left of the program to open the program menu.

**New**

Creates a new empty program.

**Clone**

Creates a copy of the program.

**Edit**

Opens the [Program Editor](#).

**Delete**

Deletes the program.

## USER GUIDE: MIXER

This screen displays the controls for all the tracks in the sequence.



### Pan

Turn the knob left or right to route the audio through the respective speaker. Tap the Cntr button to bring the audio back to the default L-R balance.

### Level

Adjust the slider up or down to increase or decrease the volume for a particular track.

### Mute

Mute turns the track off until you tap the button again.

### Solo

Solo causes the track to be the only one played until you tap the button again. Tapping Solo on two tracks causes both tracks to be the only ones played.



## USER GUIDE: FX

Add effects to tracks to create new and evolving sounds. Tap the arrow buttons on the left and right, or swipe to move between effects.

### DDT Bit-Crusher

The DDT Bit-Crusher reduces the sampling rate and bit rate of your signal to provide variable, fun results.



#### Bits

This control adjusts the bit rate. A higher bit rate has a signal integrity closer to the original sound.

#### Downsample

This reduces the sampling rate of the signal. The lower the downsampling, the more crude the signal.

#### Threshold

This control sets the clipping threshold – turn the threshold up to clip the signal sooner.

#### Wrap

With wrap enabled, values over the clipping threshold overflow or wrap

around themselves instead of clipping. This makes the sound louder and more distorted. Use the threshold control to set when the wrapping should occur.

### Track

These switches turn the effect on and off for a particular track.

---

## ED2 Tempo-Syncable Delay



### Feedback

Causes the sound to echo beyond the original signal.

### Dampen

Decreases the volume of the delay effect compared to the original signal.

### Dry/Wet

Determines the amount of the original signal heard through the effect. The closer to Dry, the greater the original sound and the less audible the delay.

### Sync

Causes the delay to sound in time with the session tempo.

### Rate

Increases or decreases the interval of the delayed sound.

### Track

Controls the amount of delay applied to each track.

## MCL Master Compressor/Limiter

The MCL Master Compressor/Limiter reduces the dynamic range of the output to prevent signal clipping, minimizing distortion in the process.



### Input

Displays the input levels for the right and left speaker.

### Threshold

Sets the decibel level at which the signal is affected.

### Gain

Compensates for signal reduction from the effect.

### Output

Displays the output levels for the right and left speaker.

[< MIXER](#)

[TABLE OF CONTENTS](#)

[SAMPLER >](#)

## USER GUIDE: SAMPLER

The Sampler allows you to create your own samples from tracks in your iTunes library. This screen can be accessed from the Transport in the Main UI or the Program Editor.

### Main View

#### *Record Arm*



Arms the recordings. If there is an input signal, tapping this button begins recording. Can record from the iPad mic or from the Music Library (see below). Tap the button again to stop recording.



#### *AudioPaste*

Opens the AudioPaste menu to import samples from other apps. After importing the sample the save view will automatically launch (see below).

#### **Music Library**





Opens a turntable and the option to load tracks from the iTunes library.

*Load*

Opens the iTunes library. Select the track to sample from the standard iOS music browser.

*Pitch Adj.*

Adjusts the pitch of the track on the turntable.

*Tonearm*

Move the tonearm to changes the playback position of the track.

*Play*

Plays the track.

To hide the Music Library tap the blue triangle above the base of the tonearm.

---

**Save View**



Once a sound has been sampled, the save view screen opens.

#### *Rename*

Tap the edit button next to the sample name to rename the file.

#### *Retry*

Goes back to the Sample screen to re-record a sample.

#### *Save to [Category]*

Saves the sample in the indicated directory. You must select a category before being able to save the sample.

#### *Trim*

Slide in the bars at either end of the waveform to trim the sample.

#### *Test Pad*

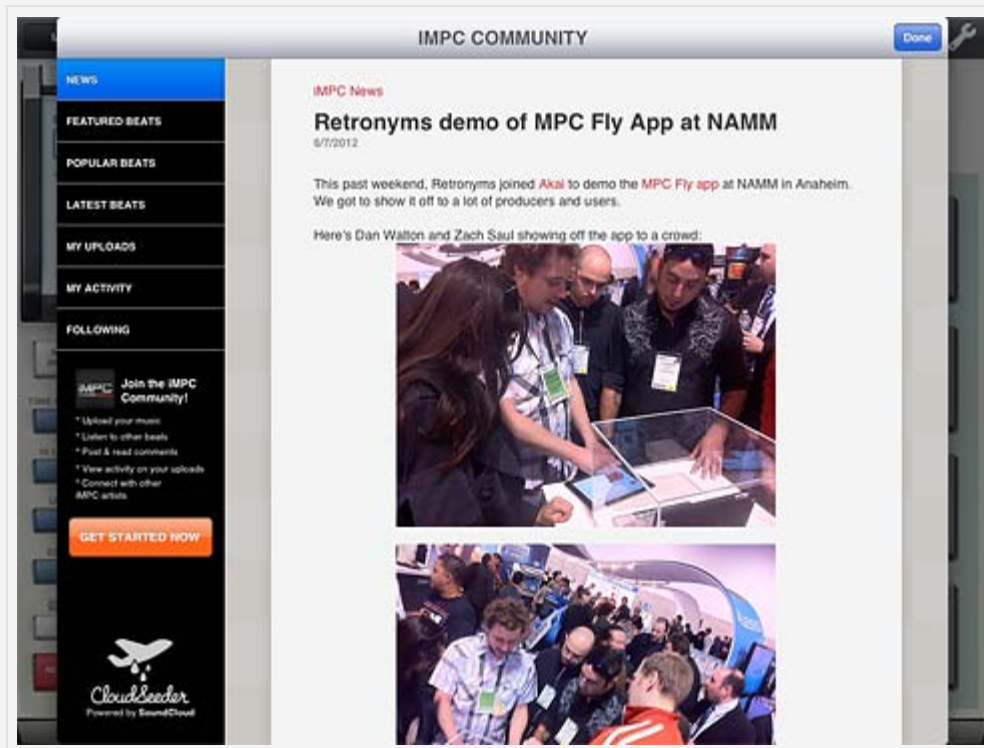
Plays the audio between the trim bars.

#### *Category*

Tap a category to file it in that section. A category must be selected for a sample before it can be saved.

## USER GUIDE: IMPC COMMUNITY

iMPC Community is the place to listen to beats by other iMPC users, and share your own. Any sequences you share online appear here. Like, Comment, and follow your favorite producers. It's all powered by SoundCloud, so you can share with anyone online! You can also get the latest news from Akai Pro and Retronyms.



### Featured Songs

Shows a selection of songs from the community featured by Akai Pro and Retronyms.

### Popular Songs

Shows a selection of the most liked songs from the iMPC Community.

### Latest Songs

Displays the latest tracks uploaded to the iMPC Community.

### My Uploads

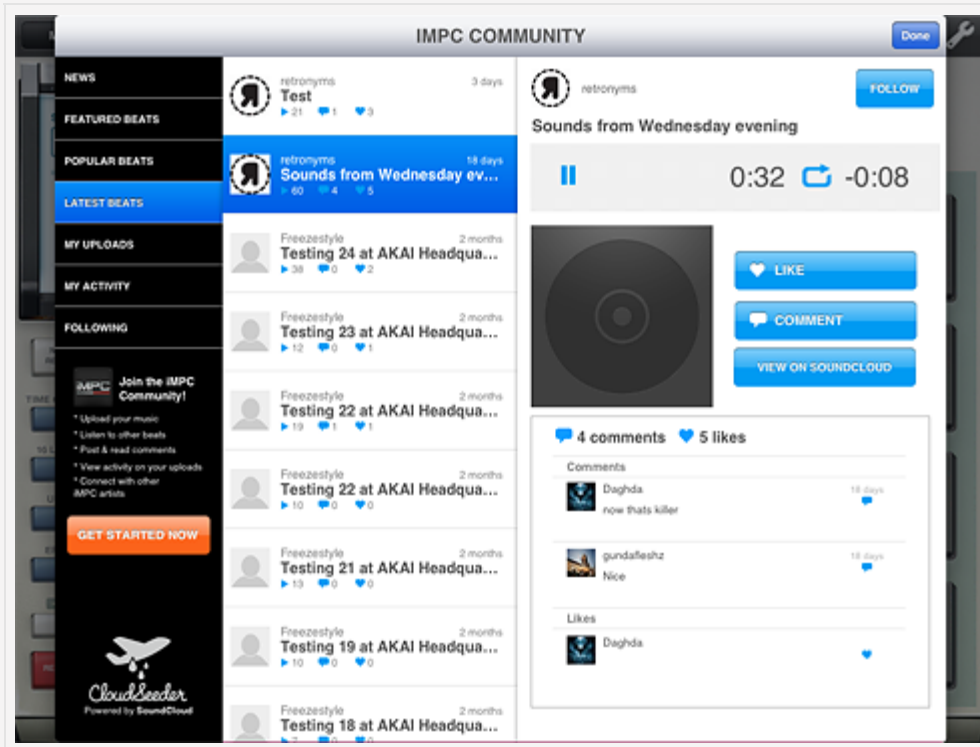
Displays all your latest uploads to the iMPC Community. Tapping this will prompt you to log in to your SoundCloud account if you have not already done so. If you have not signed up for the service, the option to create an account is available at the bottom left of the menu.

## My Activity

Displays all your activity on other accounts (liking, commenting, etc.).

## Following

Displays the activity of all the artists you're following.



< SAMPLER

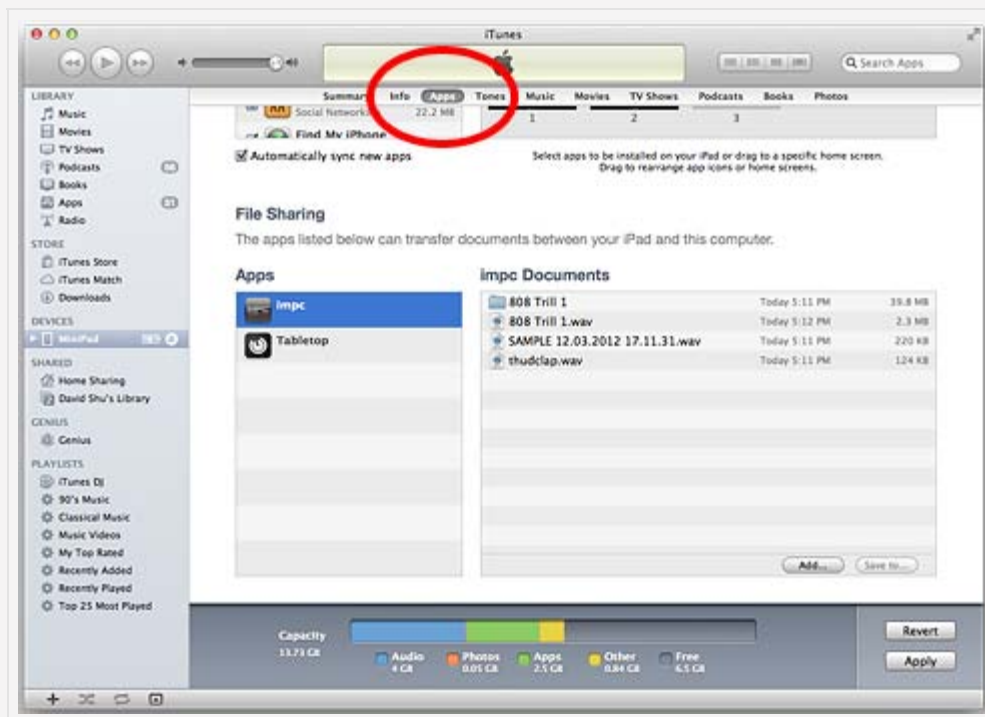
TABLE OF CONTENTS

IMPORTING EXPORTING >

# USER GUIDE: IMPORTING AND EXPORTING FILES

## iTunes File Sharing

Any exported Sequences or custom Samples will appear in “iMPC Documents” in iTunes. From here, you can drag items to your Desktop Computer. If you export a Sequence to use with MPC Desktop Software, it will appear here as a Folder. For more information about exporting Sequences, see [Sequence and Program Menus](#).



To access iTunes File Sharing:

1. Connect your iPad to your Desktop Computer.
2. Open iTunes.
3. Click your iPad in the left column under "Devices.
4. Click the small “Apps” tab at the top of the window.
5. Scroll down to “File Sharing”, and click “iMPC” in the Apps Column.

## Import Custom Sounds

Any custom sounds (in .wav format) you drag here will be available when editing Programs.

[< IMPC COMMUNITY](#)

[TABLE OF CONTENTS](#)

## Free Manuals Download Website

<http://myh66.com>

<http://usermanuals.us>

<http://www.somanuals.com>

<http://www.4manuals.cc>

<http://www.manual-lib.com>

<http://www.404manual.com>

<http://www.luxmanual.com>

<http://aubethermostatmanual.com>

Golf course search by state

<http://golfingnear.com>

Email search by domain

<http://emailbydomain.com>

Auto manuals search

<http://auto.somanuals.com>

TV manuals search

<http://tv.somanuals.com>