

## warranty information

LandWare, Inc. warrants this product against defects in materials and workmanship for a period of ONE (1) YEAR from the date of original retail purchase. If you discover a defect and notify LandWare of the same during the warranty period, LandWare will, at its option, repair, replace, or refund the purchase price of the product to you at no charge. THE WARRANTY AND REMEDIES SET FORTH ABOVE ARE EXCLUSIVE. LANDWARE DISCLAIMS ALL OTHER WARRANTIES, EXPRESS OR IMPLIED, INCLUDING WARRANTIES OF MERCHANTABILITY AND FITNESS FOR A PARTICULAR PURPOSE. LANDWARE IS NOT RESPONSIBLE FOR SPECIAL, INCIDENTAL, OR CONSEQUENTIAL DAMAGES ARISING FROM ANY BREACH OF WARRANTY OR UNDER ANY OTHER LEGAL THEORY. Because some jurisdictions do not permit the exclusion or limitations set forth above, they may not apply in all cases.

## copyright information

The GoType! software is copyright 2000-2003 with all rights reserved by LandWare, Inc. The GoType! hardware design is PATENT PENDING by Sicon/Parallel Design. LandWare, GoType!, GoType! Pro are registered trademarks of LandWare, Inc. The slogan "Innovation for the Mobile Age" is a trademark of LandWare, Inc.

## care and maintenance

- Keep your keyboard away from extreme heat.
- Don't leave your keyboard anyplace that is extremely dusty, damp or wet.
- Take care not to spill any liquid on your keyboard. If you do, turn off your connected organizer immediately. Remove the connected organizer from the keyboard and tilt it to let the liquid drain out. Let the keyboard dry for 24 hours at room temperature. Keyboard protectors are available separately from LandWare.

## contacting landware

We thank you for purchasing GoType! and are confident that you will soon find it to be an indispensable addition to your connected organizer. We are committed to continually improving this product for you and welcome your feedback. If you require technical assistance or have any questions concerning this product please contact us via:

**Telephone** (201) 261-7944, fax (201) 261-7949  
**email** [www.landware.com/help](http://www.landware.com/help)  
**Web** <http://www.landware.com>  
**Mail** LandWare, Inc.  
PO Box 25  
Oradell, NJ 07649 USA

## Communications Regulation Information

### FCC statement

This equipment has been tested and found to comply with the limits for a Class B digital device in accordance with the specifications in Part 15 of FCC rules. See instructions if interference to radio or television reception is suspected.

### Radio and television interference

The equipment described in this manual generates, uses and can radiate radio-frequency energy. If it is not installed and used properly-that is, in strict accordance with LandWare's instructions-it may cause interference with radio and television reception.

This equipment has been tested and found to comply with the limits for a Class B digital device in accordance with the specifications in Part 15 of FCC rules. These specifications are designed to provide reasonable protection against such interference in a residential installation. However, there is no guarantee that interference will not occur in a particular installation. You can determine whether your computer system is causing interference by turning it off. If the interference stops, it was probably caused by the computer or one of the peripheral devices. If your computer system does cause interference to radio or television reception, try to correct the interference by using one or more of the following measures:

- Turn the television or radio antenna until the interference stops.
- Move the Keyboard to one side or the other of the television or radio.
- Move the Keyboard farther away from the television or radio.

If necessary, consult a LandWare authorized service provider or LandWare Inc. See the service and support information that came with your LandWare product. Or, consult an experienced radio/television technician for additional suggestions. You may find the following booklet helpful: Interference Handbook (stock number 004-000-00493-1). This booklet, prepared by the Federal Communications Commission, is available from the U.S. Government Printing Office, Washington, DC 20402.

### Important

Changes or modifications to this product not authorized by LandWare could void the FCC Certification and negate your authority to operate the product. This product was tested for FCC compliance under conditions that included the use of Casio Cassiopeia's.

### DOC STATEMENT

#### DOC Class B Compliance

This digital apparatus does not exceed the Class B limits for radio noise emissions from digital apparatus as set out in the interference-causing equipment standard entitled "Digital Apparatus", ICES-003 of the Department of Communications.

# GoType!™

## Users Guide for Pocket PC



**LandWare**  
*innovation for the mobile age*

To get the most out of your new purchase we recommend you read this document fully



# getting started

Follow the eight simple steps below



## 1 install the gotype! software

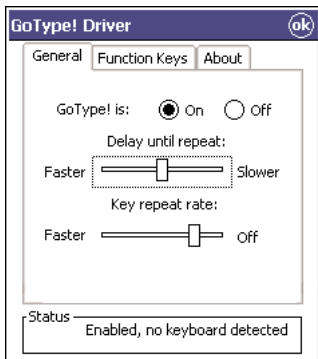
Your handheld's sync software and cradle (or cable) are required for the installation of this software. *The GoType! software must be installed and activated before the keyboard can be used.*

NOTE: While the keyboard may be used as a cradle, we recommend that you first install the GoType! software via the cradle that came with your Pocket PC device.

To install the GoType! Pro driver follow the steps below. For more detailed information refer to the manual that came with your connection software.

### Installation instructions

- 1 Place your organizer in the cradle you received with your Pocket PC and establish a connection with the ActiveSync software.
- 2 Insert your GoType! disk.
- 3 Click the Start button, select Run, and type: a:setup.
- 4 Follow the on-screen prompts to complete the software installation.



## 2 activate the gotype! software

The GoType! Pro driver software must be initially activated before the keyboard can be used. IMPORTANT NOTE: *The GoType! Pro driver will only function correctly if the organizer is turned off BEFORE it has been docked with the keyboard.*

### To activate the GoType! driver

- 1 Tap the Start or Windows button on the organizer.
- 2 Tap GoType!, to launch the GoType! driver settings application.
- 3 Tap the ON radio button.
- 4 The GoType! driver will now enable and disable itself automatically. Note: the radio buttons will not change state, but the driver will only activate if the keyboard is detected.



## 3 turn the organizer off

This is an extremely important step. The organizer must be turned off BEFORE it is docked with the keyboard. Only then will the GoType! Pro keyboard function correctly.



## 4 extend the keyboard stabilizer

A special foot at the rear of the keyboard may be extracted to provide maximum stability when typing. It is recommended that you extract this foot prior to using your keyboard.



## 5 set port switch to keyboard mode

To enable communication between the keyboard and the organizer the GoType! port switch must be moved over to the right hand side (**abc**). NOTE: You will not be able to type on the keyboard while in serial mode (↔).



## 6 dock the organizer in the keyboard

Place the organizer into GoType!'s integrated dock. Remember, the organizer must be turned off during this stage.



## 7 turn the organizer on

Press the Power button on the handheld to activate the Pocket PC by pressing its power switch. If the GoType! driver has been correctly installed and activated (see step 2) it will automatically enable keyboard input.



## 8 launch an application

You are now ready to type with your keyboard. Simply open any program that accepts text input and start typing. It's that easy.

### Example: Creation of a text memo

Tap F5 to create a new memo and start typing. Text should appear on the screen.

# performing an activesync

The GoType! keyboard comes equipped with an integrated serial port or USB port (depending on your model) that can be used to connect the keyboard to a desktop computer. On handhelds that supports ActiveSync, this port enables you to perform an ActiveSync directly from the keyboard.



## 1 connect the serial/USB cable

Plug one end of the GoType! serial or USB cable into the port on the left side of the keyboard. Remove your existing cradle. Plug the other end into the same port on your PC.

NOTE: On a Cassiopeia E-125, you will need to change the default PC Connection setting from USB to SERIAL in order to connect with the GoType! keyboard.

To change this setting on your E-125:

Tap Start, tap Settings, tap Connections, tap PC, select *57600 Default* from the pop-up, and tap OK.



## 2 set port switch to ActiveSync mode

To perform an ActiveSync through the keyboard

- 1 TURN THE ORGANIZER OFF
- 2 Move the port switch to the **left (arrows)**
- 3 Turn the organizer ON, ActiveSync should now begin.

To use the keyboard after an ActiveSync

- 1 TURN THE ORGANIZER OFF
- 2 Move the port switch to the keyboard **abc** mode
- 3 Turn the organizer ON
- 4 You should now be able to use the keyboard.

# recharging the organizer



## 1 plug in the AC adapter

GoType! Pro can provide recharging power for your Pocket PC unit while they are sitting in the keyboard.

NOTE: The GoType! power port supports the original adapter that came with your Pocket PC ONLY. Under no circumstances should any other adapter be used.

# using gotype!

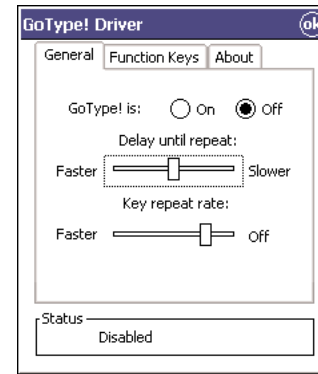
A guide to additional features

## altering operational settings

The GoType! driver provides a number of options that allow you to customize its operation to best suit the way you work.

### Altering operational preferences

- 1 Tap the Start or Windows button on your Pocket PC.
- 2 Tap **Programs > GoType!**
- 3 The window shown on the left will appear.



## enabling and disabling gotype!

During the normal course of operations you should not have to manually enable and disable the GoType! driver. The software is smart enough to activate and deactivate itself automatically when the organizer is placed in or removed from the keyboard. In order for it to achieve this:

1. The organizer must be turned off before it is docked with the keyboard.
2. The organizer must be turned off before it is removed from the keyboard.

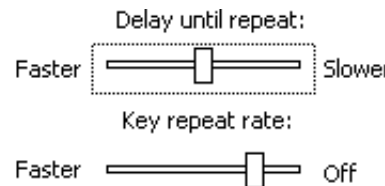
If for some reason you need to manually disable the driver, simply tap the *Off* radio button within the GoType! software.

## altering keyboard behavior

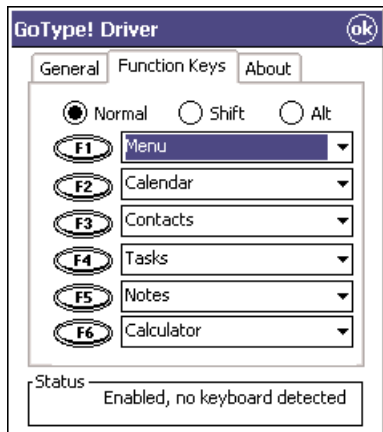
### Setting delay and key repeat rates

Tap and drag the *Delay until repeat* to change how long you need to hold a key down until it starts to repeat. Moving the slider to the *Off* position will disable this feature completely.

Tap and drag the *Key repeat rate* slider to change how fast a key repeats when you hold it down.



## • configuring the function keys



The six function keys along the top of the keyboard can be set to launch your favorite applications. With the addition of the Shift and Alt modifier keys you can easily launch up to 18 different programs.

### To define/edit a function key

- 1 Launch the GoType! application from the Start menu.
- 2 Tap the *Function Keys* tab.
- 3 Specify the modifier key by tapping either the on-screen Shift, Alt or Normal buttons.
- 4 Choose from the pop-up menus which program should be assigned to each *Function* key.
- 5 Tap OK.

The following applications are launched by default:

| Function Key | E-100,E-105    | E-115,E-125, iPAQ |
|--------------|----------------|-------------------|
| F1           | Menu           | Menu              |
| F2           | Calendar       | Calendar          |
| F3           | Contacts       | Contacts          |
| F4           | Tasks          | Tasks             |
| F5           | Note Taker     | Notes             |
| F6           | Calculator     | Calculator        |
| Shift + F1   | World Clock    | File Explorer     |
| Shift + F2   | Inbox          | Inbox             |
| Shift + F3   | Voice Recorder | Internet Explorer |
| Shift + F4   | GoType!        | GoType!           |
| Shift + F5   | Note Taker     | Pocket Word       |
| Shift + F6   | Calculator     | Pocket Excel      |

## • special command key combinations

The GoType! keyboard also includes the following special keys / key combinations:

| Key Combination         | Function                        |
|-------------------------|---------------------------------|
| Control + c             | Copy                            |
| Control + x             | Cut                             |
| Control + v             | Paste                           |
| ESC                     | Cancel                          |
| Control + Enter         | OK                              |
| Shift+left/right arrow  | Selects text                    |
| Shift+Ctrl +left arrow  | Select word                     |
| Shift+Ctrl +right arrow | Select word                     |
| Shift+DEL               | Forward Delete                  |
| Start                   | Accesses the Start menu         |
| Control+ALT+DEL         | Access the Memory Control Panel |

GoType! also supports two international monetary characters:

|         |               |
|---------|---------------|
| ALT+ 3  | British Pound |
| ALT + 4 | Euro symbol   |

*I type but nothing appears.*

Did you install the GoType software driver? If yes, these are the steps to enable your GoType! Pro:

1. Remove the organizer from the keyboard.
2. Make sure that your GoType! driver is ON.
3. Turn off the organizer.
4. Dock the organizer in the keyboard.
5. Ensure the serial switch is set to keyboard (**abc**) mode.
6. Turn your organizer ON.
7. Tap one of the GoType!'s function keys.

*When I attach my modem to my Organizer it does not appear to work correctly now that I have the GoType! software installed.*

Before using a modem you should first disable the GoType! Pro driver. To do so, open the GoType! program on your connected organizer and tap *OFF*.

*How do I scroll/select an appointment time from within my datebook/calendar application*

This needs to be accomplished with your stylus. After you have selected a time, you can use GoType! Pro to enter your desired text.

*Can I move between fields in my address book?*

It depends on the operating system you are running. In the Windows CE 2.1 for Palm-sized PC's the operating system supports the Tab key to move field to field. For Pocket PC devices, the use of the Tab key is not supported.

*How do I launch an application with GoType!?*

The six function keys along the top of the keyboard can be set to launch your favorite applications. See the previous section on "Configuring the function keys" for more detail.

## functional limitations

Considerable effort has been made to ensure the GoType! Pro keyboard works seamlessly with all Pocket PC applications. However because some applications were designed without a keyboard in mind there are still instances where the stylus is still required.

## Free Manuals Download Website

<http://myh66.com>

<http://usermanuals.us>

<http://www.somanuals.com>

<http://www.4manuals.cc>

<http://www.manual-lib.com>

<http://www.404manual.com>

<http://www.luxmanual.com>

<http://aubethermostatmanual.com>

Golf course search by state

<http://golfingnear.com>

Email search by domain

<http://emailbydomain.com>

Auto manuals search

<http://auto.somanuals.com>

TV manuals search

<http://tv.somanuals.com>