



Gourmia

MODEL# GCM5100

K CUP & ESPRESSO COFFEE MAKER





© 2016 Gourmia
www.Gourmia.com
The Steelstone Group
Brooklyn, NY

All rights reserved. No portion of this manual may be reproduced by any means whatsoever without written permission from The Steelstone Group, except for the inclusion of quotations in a media review.

Although every precaution has been taken in the preparation of this manual, The Steelstone Group assumes no responsibility for errors or omissions. Nor is any liability assumed for damages resulting from the use of the information contained herein. Although every effort has been made to ensure that the information contained in this manual is complete and accurate, The Steelstone Group is not engaged in rendering professional advice or services to the individual consumer; further, The Steelstone Group shall not be held responsible for any loss or damage allegedly arising from any information or suggestion in this manual.

10 9 8 7 6 5 4 3 2 1

Printed in China

Welcome to *Freshly Brewed* Espresso and Coffee!

With the purchase of the K Cup & Espresso Coffee Maker, your enjoyment of rich and deliciously hot coffee and espresso accompanied by warm or cool froth is about one minute away! The art of making coffee and espresso can be a fairly complicated one when the roasting process, blending conditions, temperature and timing come into consideration. But, now you have the K Cup & Espresso Coffee Maker at your fingertips and, with the touch of a button, you are ready to make exceptional espresso and fresh, hot coffee.

The automatic brewing system of the K Cup & Espresso Coffee Maker contains a distinctive cartridge system using K-Cup® coffee pods and Nespresso® espresso capsules to accommodate your early-morning coffee as well as your after-dinner espresso. With variable temperature settings and serving sizes of your choice, it is brewing at its finest. And, it is easy to change cartridges; you'll be able to serve everyone's favorite brew by switching cartridges in a simple 1-2-3 process.

In addition to the versatile single serve system, the K Cup & Espresso Coffee Maker offers the Automatic Warm & Cold Milk Frother. With one-touch technology, your coffee or espresso now becomes extra-special!

The following pages of this manual offer full and complete instructions for all the functions and features of your K Cup & Espresso Coffee Maker. Please read all safety instructions and complete directions carefully for safe usage at all times. Thank you for your purchase! We hope you will enjoy all the innovative products brought to you by our family at Gourmia.



SAFETY FIRST P. 6

FEATURES & FUNCTIONS p. 8

BEFORE FIRST USE & ASSEMBLY p. 12

STEP BY STEP COFFEE & ESPRESSO p. 16

REMOVING & SWITCHING CARTRIDGES

SPECIALTY COFFEE & ESPRESSO RECIPES p. 23

MAINTENANCE p. 25

WARRANTY & SERVICE p. 27

IMPORTANT SAFEGUARDS

When operating this electric appliance, basic safety instructions should always be followed. Refer to the following for these instructions.

1. **READ ALL SAFETY & USAGE INSTRUCTIONS BEFORE USING THE K CUP & ESPRESSO COFFEE MAKER**
2. **EXERCISE EXTREME CAUTION: AVOID ELECTRICAL SHOCK.** DO NOT immerse cord, plug or the K Cup & Espresso Coffee Maker in water or other liquid.
3. **Caution: Hot liquids can cause burns.** Do not open cartridge system while brewing or operating system is in use. Hot steam or water may burn or scald. Do not operate without using a cup to catch coffee or espresso after brewing and do not hold hands or fingers under the liquid as it streams from the K Cup & Espresso Coffee Maker.
4. Children should never use the K Cup & Espresso Coffee Maker; close supervision is required when appliance is used near children
5. Never operate the K Cup & Espresso Coffee Maker with a damaged cord or plug or one that has malfunctioned or been damaged in any way. Contact Customer Service for analysis. Do not use extension cords.

SAVE THESE INSTRUCTIONS

FOR HOUSEHOLD USE ONLY



Electrical Polarized Plug: This K Cup & Espresso Coffee Maker has a polarized plug (one blade is wider than the other). To reduce the risk of electrical shock, the plug is intended to be used by inserting it into the electrical outlet only one way. If the plug does not fit securely into the outlet, turn the plug and re-insert. Do not modify this plug. If the plug does not fit the outlet securely, call a qualified electrician for assistance. DO NOT use this plug with extension cords of any kind.

WARNING: This product contains a chemical known to the State of California to cause cancer.

WARNING: This product contains a chemical known to the State of California to cause birth defects or other reproductive harm.

FEATURES & FUNCTIONS



A. K Cup & Espresso Coffee Maker Base: The K Cup & Espresso Coffee Maker Base houses the Automatic Cartridge System that holds pods and capsules, the Cartridge Holder Compartment, Cartridge Panel Compartment, Lift Lever, Demitasse Cup Platform and Coffee Cup Platform and the superior 19 Bar Extraction System. The K Cup & Espresso Coffee Maker Base contains the latched door for the Automatic Warm & Cold Milk Frother.

The K Cup & Espresso Coffee Maker Base also houses the Control Panel with LED Display for easy operation (see p. xxx).

B. Automatic Cartridge System:

- a) K-Cup® Pod Cartridge and Cartridge Panel
- b) Nespresso® Espresso Capsule Cartridge and Cartridge Panel
- c) Cartridge Holder Compartment
- d) Cartridge Panel Compartment

The Automatic Cartridge System contains Sets of Cartridge Holder/Cartridge Panel for either the K-Cup Pod or the Nespresso Espresso Capsule.

The Sets consist of one Cartridge Holder and one Cartridge Panel each and are color-coded to match. The Sets must match in order for the single serve system to properly function. Other coffee pods and espresso capsules will not fit within this system.

The Automatic Cartridge System also houses the Cartridge Holder Compartment and the Cartridge Panel Compartment. These two compartments hold the 2-part Sets of Cartridge Holders and Panels.

C. Lift Lever: The Lift Lever moves up and back to CLICK and fully expose the Cartridge Holder. When positioned in the Holder, either Cartridge will be seated and ready for use. See Step-by-Step Instructions on p. xxx.

D. Flip-Down Demitasse Cup Platform: An elegant Demitasse Cup Platform can be flipped down to hold demitasse cups (4 ounces or less) for espresso. This platform, close to the pressure jet, helps eliminate any drips or overspray as the espresso is streamed into the small cup.



E. Coffee Cup Platform: Coffee cups holding up to 12 ounces can be positioned on the Coffee Cup Platform when using the K-Cup option.

F. Removable Drip Tray and Grate: The Grate sits on top of the Drip Tray/Used Pod Container. The Grate allows any liquid that drips or spills to be captured. It can easily be removed for cleaning.

G. Used Pod/Capsule Container: Attached to the Drip Tray, the Used Pod/Capsule Container holds 12 to 14 used Capsules and/or Pods. Because liquid can drain from the Pods and Capsules after use, it is recommended that the Container be emptied regularly and liquid drained out and cleaned. The empty Container can be dried with a paper towel.

H. Removable Water Reservoir: The Water Reservoir holds a generous 40 ounces, enough for several cups of coffee and shots of espresso. Clean as needed for optimal performance (see p. xxx).

I. Control Panel with LED Display: After inserting a Cartridge Holder/Cartridge Panel Set, the LED Display will indicate whether the K-Cup Pod or the Nespresso Capsule should be inserted.

After inserting the Pod or Capsule as directed, select choices using the LED Display. Note that the Control Panel offers variable temperatures and ounce sizes for the K-Cup Pods and Nespresso Capsules. The LED Display will then illuminate the choices selected.



Left Panel:

1. Power Button – Lights up when ready to operate
2. Up Δ Arrow – increase temperature
3. Down ∇ Arrow – decrease temperature

Right Panel:

4. Up Δ Arrow – increase ounce size
5. Down ∇ Arrow – decrease ounce size
6. Start to Brew Button



BEFORE FIRST USE

1. Using a soft, damp cloth, clean the K Cup & Espresso Coffee Maker Base, including accessories, and dry thoroughly with a soft cloth. Do not immerse the Base, cord or plug in water.
2. Place the K Cup & Espresso Coffee Maker on a flat counter surface.
3. Plug the K Cup & Espresso Coffee Maker into a wall outlet.
4. Fill the Removable Water Reservoir to the MAX Fill Line (or above the MIN Fill Line, as desired).

ASSEMBLY

K-Cup Cartridge and Cartridge Panel Set

Move the Lift Lever up and back until it clicks into place. The empty Cartridge Holder Compartment will be exposed. (fig 1, 2, 3)

Insert the K-Cup Cartridge into the Holder Compartment, until it CLICKS (fig 4), aligning the hole in the bottom of the Cartridge with the pin in the Compartment. (fig 5, 6)

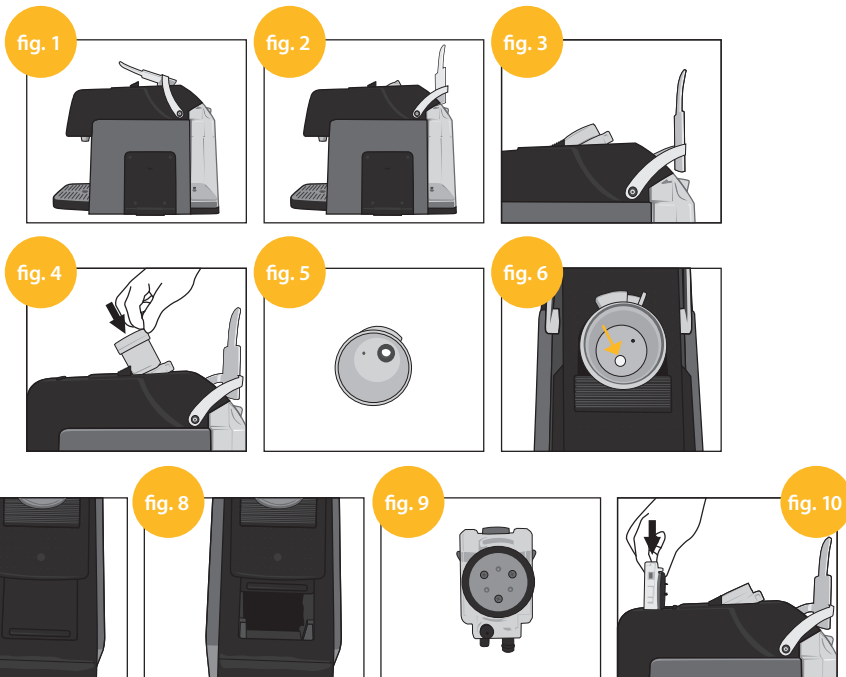
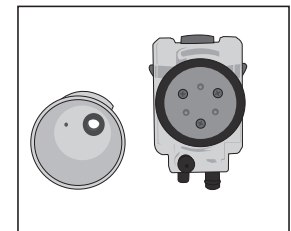
Ensure the K-Cup Cartridge is fully seated in the Holder Compartment.

Open the sliding door to the Cartridge Panel Compartment. (fig 7)

The empty Cartridge Panel slot will be exposed. (fig 8)

Place the color-coded Cartridge Panel that matches the K-Cup Cartridge into the slot, flat panel face toward the front of the machine. Push down until the Panel audibly “clicks” into place. (fig 9, 10)

Slide the Cartridge Panel Compartment to the closed position.

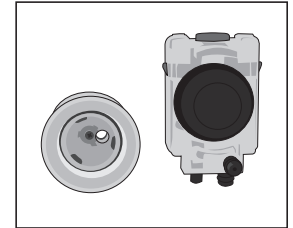


ASSEMBLY

Nespresso Espresso Cartridge and Cartridge Panel Set

Move the Lift Lever up and back until it CLICKS into place. The empty Cartridge Holder Compartment will be exposed. (fig 1, 2, 3)

Insert the Espresso Cartridge into the Holder Compartment, until it CLICKS (fig 4), aligning the hole in the bottom of the Cartridge with the pin in the Compartment. (fig 5, 6)



Ensure the Espresso Cartridge is fully seated in the Holder Compartment.

Open the sliding door to the Cartridge Panel Compartment. (fig 7)

The empty Cartridge Panel slot will be exposed. (fig 8)

Place the color-coded Cartridge Panel that matches the Espresso Cartridge into the slot, flat panel face toward the front of the machine. Push down until the Panel audibly “clicks” into place. (fig 9, 10)

Slide the Cartridge Panel Compartment to the closed position.

fig. 1



fig. 2



fig. 3

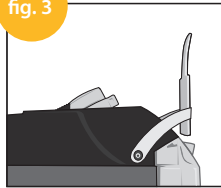


fig. 4

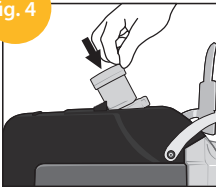


fig. 5

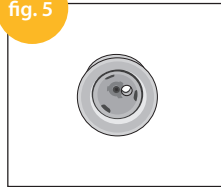


fig. 6

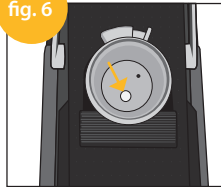


fig. 7

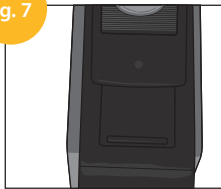


fig. 8

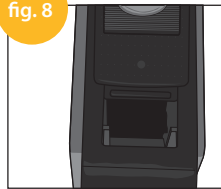
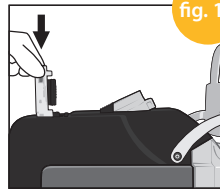


fig. 9

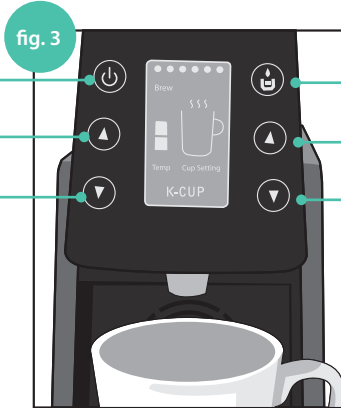
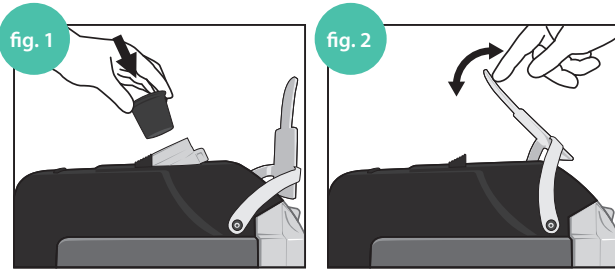


fig. 10



STEP-BY-STEP COFFEE AND ESPRESSO

Step-by-Step K-Cup Coffee



Power Button Lights up when ready to operate

Up Δ Arrow increase temperature

Down ▽ Arrow decrease temperature

Start Brew Button Press to start brewing

Up Δ Arrow increase ounce size

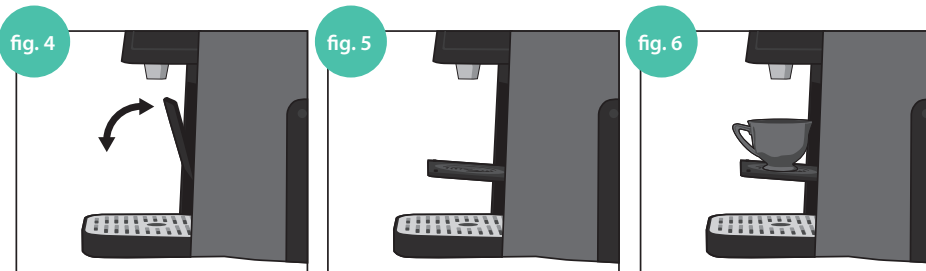
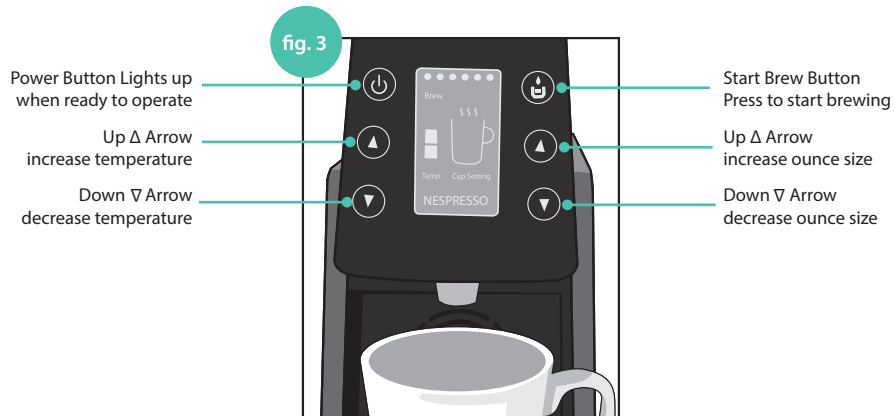
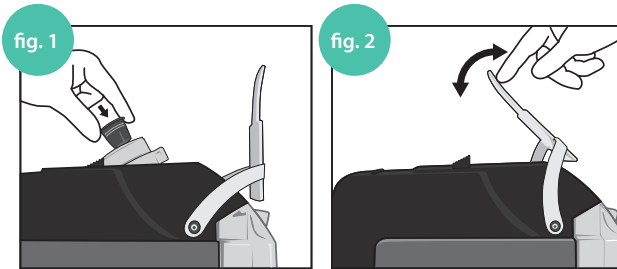
Down ▽ Arrow decrease ounce size

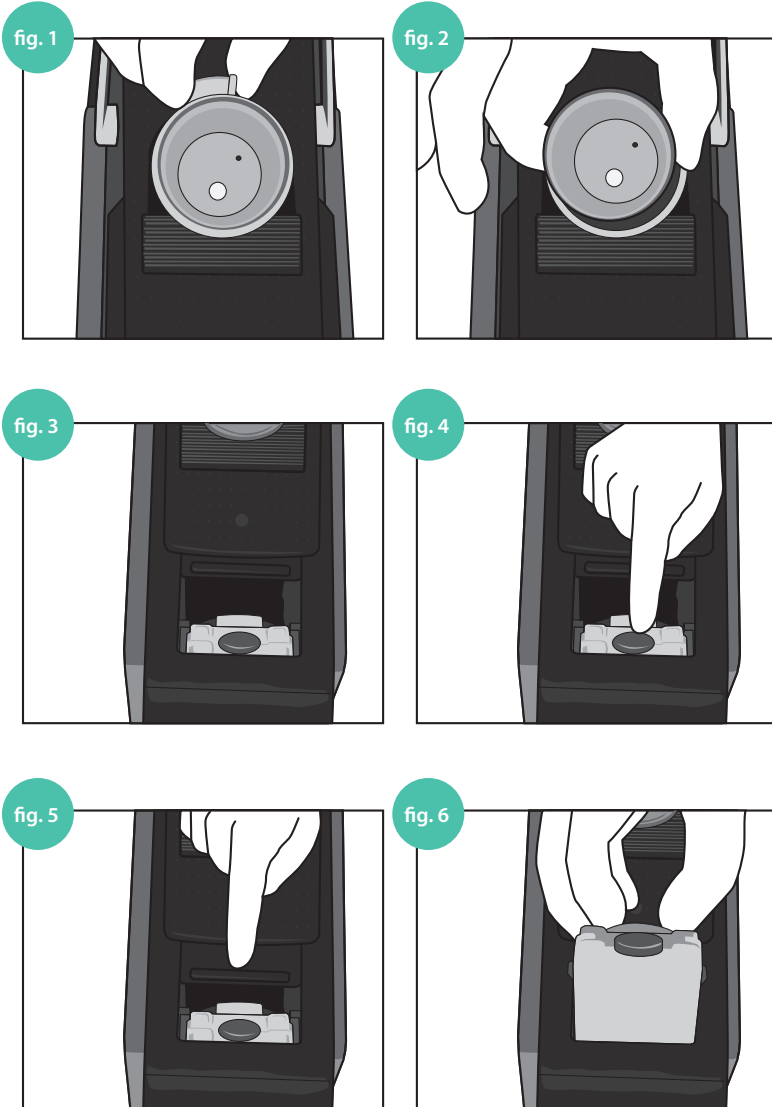
1. After assembling your K-Cup Cartridge and Cartridge Panel Set, insert the K-Cup Pod. (fig 1)
2. Move the Lift Lever down until it is fully closed. (fig 2)
3. Select coffee temperature and size variables on the Control Panel. (fig 3)
4. Place a coffee cup on the Coffee Cup Platform and press Start Button.
5. To make an additional cup of coffee, pull up and back on the Lift Lever again until it clicks. The used K-Cup Pod will drop into the Used Pod Container and the Cartridge Holder will now be ready to fill again with another K-Cup Pod. Repeat the process as above.



Step-by-Step Nespresso Espresso

1. After assembling your Espresso Cartridge and Cartridge Panel Set, insert the Espresso Capsule. (fig 1)
2. Move the Lift Lever down until it is fully closed. (fig 2)
3. Select espresso temperature and size variables on the Control Panel. (fig 3)
4. Place a demitasse cup on the Demitasse Cup Platform and Press Start Button. (fig 4, 5, 6)
5. To make an additional espresso, pull up and back on the Lift Lever again. The used Capsule will drop into the Used Capsule Container and the Cartridge Holder will now be ready to fill again with another Espresso Capsule. Repeat the process as above.





To Remove or Switch Cartridge Holder and Cartridge Panel Sets

1. Pull the Lift Lever up and back until it clicks.
2. To remove the Cartridge Holder from the Compartment, with one hand, press the spring-loaded Tabs together on the Cartridge Holder. (fig 1)
3. With the other hand, remove the empty Cartridge Holder. (fig 2)
4. To remove the Cartridge Panel, open the sliding cover to the Cartridge Panel Compartment. (fig 3)
5. Press on the colored Button on top of the Panel. The spring-loaded Compartment will eject the Panel slightly. Remove by hand (fig 4, 5, 6).



SPECIALTY COFFEE & ESPRESSO BEVERAGE RECIPES

Caffè di Miele

- 2 Tbsp. honey
- ¼ cup low fat milk
- 1 K-Cup Pod
- Pinch ground cinnamon

Pour the honey and milk into a 12-oz. mug and stir to combine. Insert the K-Cup Pod. Place the mug on the Coffee Cup Platform. Select your desired temperature, and the 8-oz. size. Brew. Stir the hot coffee drink well to dissolve the honey. Sprinkle with cinnamon.

Jamaican Rum Buzz

- 1 K-Cup Pod
- 1 Tbsp. molasses
- 2 Tbsp. dark rum
- 3 Tbsp. whipping cream

Brew an 8-oz. cup of coffee, using the K-Cup Pod. Combine the coffee and the molasses in a small saucepan and heat over medium temperature until the molasses is dissolved, stirring often. Pour the rum into a 12-oz. mug and top with the hot coffee and molasses. Froth the cream and spoon it onto the hot coffee drink.

Quick Café Macchiato

- 1 Nespresso Espresso Capsule
- 3 Tbsp. milk

Place a demitasse cup on the Demitasse Cup Platform. Insert the Espresso Capsule and brew. Froth the 3 Tbsp. milk, and spoon it onto the hot coffee.

Caramel Sea Salt Affogato

- 1 Nespresso Espresso Capsule
- 2 scoops Caramel Sea Salt Ice Cream

Place 2 scoops of the ice cream into a coffee mug. Place a demitasse cup onto the Demitasse Cup Platform and brew an Espresso Capsule. Pour the hot coffee over the ice cream.



MAINTENANCE

ALWAYS allow the Coffee Maker to cool completely before cleaning.

Unplug the Coffee Maker before cleaning.

After each use, clean and dry the Coffee Cup Platform. Use a damp cloth to clean the exterior of the Base as needed; however, do not immerse the Base in water. Remove used pods and capsules as needed; rinse and dry the Used Pod Container. Wash the Milk Frother tank in warm, sudsy water, including the plastic tubing and connector. Rinse and dry thoroughly. Do not place in dishwasher.

Clean the Water Reservoir as needed; de-calcify regularly using tablets or solutions.

DO NOT immerse the Base in water. Use non-abrasive soap only.



WARRANTY & SERVICE

This Limited Warranty is for one full year from the date of purchase. It is applicable to the original purchaser only and is not transferable to a third party user. Repair or replacement of defective parts is solely at the seller's discretion. In the event that repair isn't possible, the seller will replace the product/part. If product repair/replacement won't suffice, the seller has the option of refunding the cash value of the product or component returned.

Product defects not covered under the Warranty provisions include normal wear and damage incurred from use or accidental negligence, misuse of instruction specifications or repair by unauthorized parties. The manufacturing company is not liable for any incidental or consequential damages incurred by such circumstances.

For Customer Service or Questions, Please call: 888-552-0033

Gourmia

www.gourmia.com



G **urmia**®

www.gourmia.com

Free Manuals Download Website

<http://myh66.com>

<http://usermanuals.us>

<http://www.somanuals.com>

<http://www.4manuals.cc>

<http://www.manual-lib.com>

<http://www.404manual.com>

<http://www.luxmanual.com>

<http://aubethermostatmanual.com>

Golf course search by state

<http://golfingnear.com>

Email search by domain

<http://emailbydomain.com>

Auto manuals search

<http://auto.somanuals.com>

TV manuals search

<http://tv.somanuals.com>