

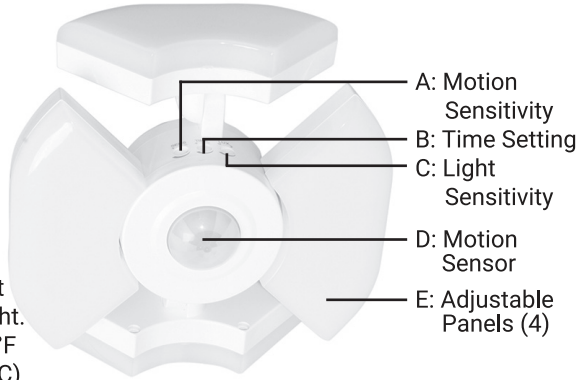


GT-Lite
Complete LED Lighting Solutions

WARNING:
TO AVOID RISK OF ELECTRICAL SHOCK,
SHUT OFF POWER BEFORE
INSTALLING OR SERVICING THIS FIXTURE

Installation: GT-BU-1800 | 1800LM/20W Motion Detecting LED E26 Bulb

Lumen: 1800LM
Watts: 20W
Equivalent to 100W Incandescent
LED Lifespan: 25,000 Hours
Operating Voltage: 120V AC
CRI: 80
Color Temp (CCT): 5000K Daylight
Base: E26 / Standard Edison Base
Wet Rated for Outdoor Use
Sensitivity: Detects motion up to 27ft
diameter when mounted at 10ft height.
Operating Temperature: 14°F to 104°F
(-10°C to 40°C)



This bulb cannot be used on H.I.D. fixtures or any other ballasted fixtures.

WARNING



- When using product, basic precautions should always be followed.
- Read and follow these instructions and observe all warnings.
- Carefully read and understand the information given in this manual before beginning installation. Failure to do so could lead to electric shock, fire, or other injuries which could be hazardous or even fatal.
- Save these instructions and warnings.

This product may present a possible shock or fire hazard if improperly installed or mounted. Products should be installed following these instructions, local electrical codes, and the current National Electric Code (NEC).

CAUTION



- NEVER submerge this product in water!
- Do not install this bulb in places where water accumulates.
- Do not use in on hot surfaces.
- Do not remove the lens protecting the LED.
- Do not use in areas near a gas source.
- It is NOT possible to change the LED light source.
- This light is not intended for use in potentially explosive environments. This is NOT a vapor proof light.
- This bulb is **NOT A TOY** and is not suitable for use by children.

Question/Comment/Missing Part?

Contact GT-Lite 1-800-865-6799
www.GTLEDLIGHTING.com



GT-Lite



ADDITIONAL WARNINGS:



- **Do not dismantle this light. There are NO replaceable LEDs or serviceable parts.**
- **This product needs to be grounded properly in a manner consistent with local electrical codes and the current NEC. If the installer does not understand basic wiring/how to properly ground the fixture, please consult a qualified electrician.**
- **Do not install this light inside of undersized enclosures.**
- **Suitable for fixtures rated for temperatures ranging from -4°F to 113°F**
- **NOT Suitable for enclosed fixtures.**
- **Do not use where exposed to standing water.**
- **Do not leave bare wires exposed outside of the electrical connections.**
- **Make sure wiring section is insulated.**
- **DO NOT USE WITH DIMMERS. This lamp is not usable with any sort of dimmer.**
- **Using this lamp with dimmer of any kind will void the warranty.**

This device complies with Part 15 of the FCC rules. Operation is subject to the following two conditions: (1) This device may not cause harmful interference, and (2) this device must accept any interference received, including interference that may cause undesired operation. Warning: Changes or modifications to this unit not expressly approved by the party responsible for compliance could void the user's authority to operate the equipment. Note: This equipment has been tested and found to comply with the limits for a Class B digital device, pursuant to Part 15 of the FCC rules. These limits are designed to provide reasonable protection against harmful interference in a residential installation. This equipment generates, uses and can radiate radio frequency energy and, if not installed and used in accordance with the instructions, may cause harmful interference to radio communications. However, there is no guarantee that the interference will not occur in a particular installation. If this equipment does cause harmful interference to radio or television reception, which can be determined by turning the equipment off and on, the user is encouraged to try to correct the interference by one or more of the following measures: (1) Reorient or relocate the receiving antenna. (2) Increase the separation between the equipment and receiver. (3) Connect the equipment into an outlet on a circuit different from that of the receiver. (4) Consult the dealer or an experienced radio/TV technician for help.

INSTALLATION INSTRUCTIONS:

1. Before installing the bulb, shut off power supply at the circuit breaker panel to avoid electrical shock. It is recommended that surge/lightning protection be installed. This bulb is not compatible with any ballasted fixture.

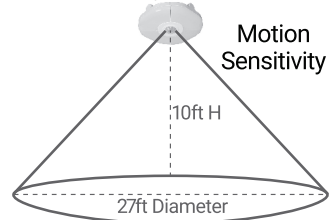
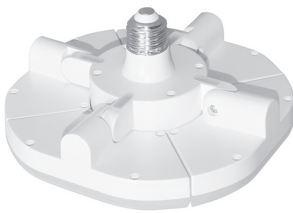
2. Remove old bulb.

3. Screw in new LED Motion Detecting bulb. (Lamp should be mounted with motion sensor (D) facing down* towards the area where motion will occur.)

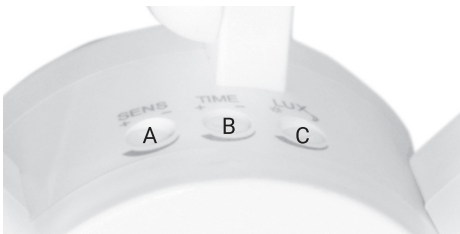
*It is not recommended to mount bulb close to the ground or face up where water may accumulate on the motion sensor.

4. Individually pivot each of the 4 adjustable panels (E) to best cover the desired space. Motion detection is 27ft* diameter from bulb when mounted at 10ft height. *At an ambient temperature of 71-75°F the detection distance is at max.

As the temperature increases or decreases, the detection distance may be affected.



5. Adjust motion sensitivity (A), time (B), and light sensitivity (C) settings to desired outcome. (These settings can be adjusted at any time.)



A: Motion Sensitivity - Max Diameter 27ft when mounted at 10ft height. Minimum diameter is 10ft.

B: Time Setting - 5 seconds to 8 minutes ON
Light will shut OFF after this time.

C: Light Sensitivity - When set to Sun Icon ☀ the motion sensor works even if it is light outside. When set to lowest LUX setting Moon 🌙 motion will be detected when it is completely dark outside.

*Highest sensitivity may detect very small movements and may need to be adjusted.

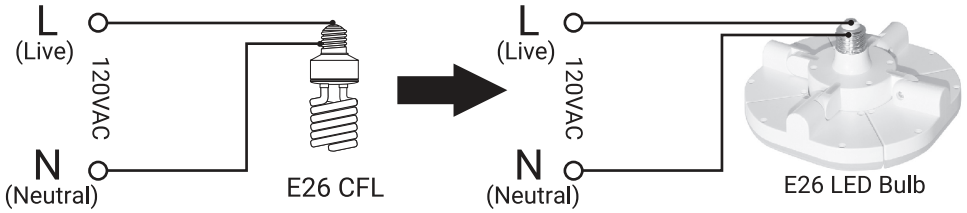
6. Restore power.

7. Turn on light switch. Motion detection will begin immediately.

8. Adjust all settings and angles as needed. (Remove bulb for access if necessary.)

9. Do not look directly into LED lights when adjusting settings.

INSTALLATION DIAGRAM:



TROUBLESHOOTING GUIDE:

Problem	Probable Cause	Solution
Fixture does not turn on.	Bad connection.	Check wiring connections.
	Faulty switch.	Test switch or replace it.
	Power is off.	Verify power supply is on.
Circuit breaker trips or fuse blows when light is turned on.	Discontinue use immediately.	Call customer service at 1-800-865-6799 Call an electrician.

CLEANING INSTRUCTIONS:

1. Turn power OFF.
2. Use a soft cloth and a mild, non-abrasive glass cleaner.
3. Lightly wipe and clean the fixture.

DO NOT use solvents.

DO NOT use cleaners containing abrasive ingredients.

NEVER spray cleaning liquid directly onto the LEDs, fixture, or wiring.

EYES



- Do not look directly at the LED lights for any length of time.
- Do not shine the light directly into other people's eyes.



This product is guaranteed against failure due to factory defects in materials or workmanship for one (1) year from the date of purchase. This warranty is non-transferable and applies only to the original owner. Proof of purchase required for repair or replacement. This warranty does not cover normal wear of parts or damage resulting from any misuse of the product. Misuse of the product includes but is not limited to: using in extreme weather conditions, opening the housing of the product, or attempted remodel/alterations made to product.

Question/Comment/Missing Part?

Contact GT-Lite 1-800-865-6799
www.GTLEDLIGHTING.com



GT-Lite

Free Manuals Download Website

<http://myh66.com>

<http://usermanuals.us>

<http://www.somanuals.com>

<http://www.4manuals.cc>

<http://www.manual-lib.com>

<http://www.404manual.com>

<http://www.luxmanual.com>

<http://aubethermostatmanual.com>

Golf course search by state

<http://golfingnear.com>

Email search by domain

<http://emailbydomain.com>

Auto manuals search

<http://auto.somanuals.com>

TV manuals search

<http://tv.somanuals.com>