



Model No.: _____ 191-691 _____

Vendor No.: _____ 11289 _____

UPC# _____ 792145354338 _____

REMOTE CONTROL INSTALLATION

GENERAL INFORMATION

This remote control is designed to separately control your ceiling fan speed and light brightness.

- The fan button will control the fan speed. (Hi, Med., Low, Off)
- Select “D” or “ON” in the frequency switches to control the light dimmer or ON/OFF function based on your light bulbs.
- The red indicator on the transmitter will light when the button is pressed.

NOTE: When installing the remote control, be sure your fan is set on “HIGH SPEED” and the light is ON.

NOTE: Frequency Switches
 “D”= Incandescent use (Dimming)
 “ON”= CFL or LED use (On/Off only)

INSTALLATION AND OPERATING INSTRUCTIONS

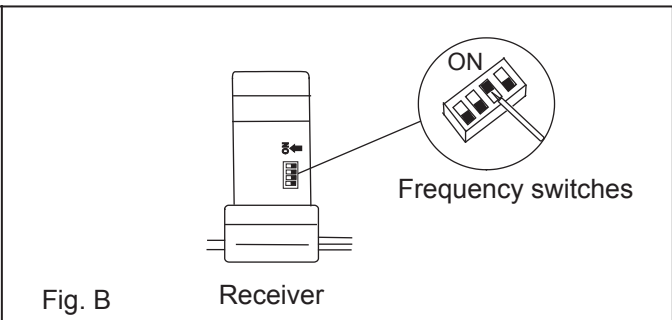
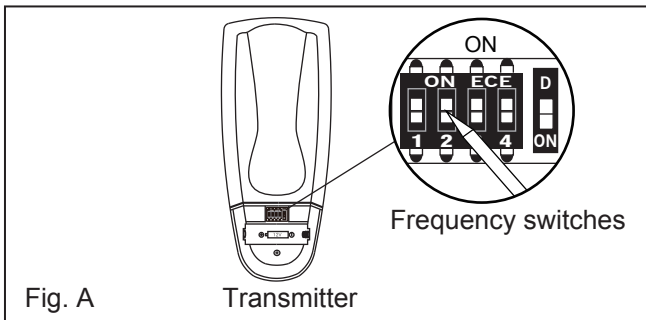
NOTE: This remote control unit is equipped with 16 code combinations to prevent possible interference from or to other remote units. The frequency switches on your receiver and transmitter have been preset at the factory. Please recheck to make sure the switches on transmitter and receiver are set to the same position, any combination of settings will operate the fan as long as the transmitter and receiver are set to the same position.

1. SETTING THE CODE

This unit has 16 different code combinations. To set the code, perform these steps:

Caution! The dip switches on the receiver unit are covered with a rubber cover, remove the rubber cover and then place back after making any changes to the dip switches.

- A. Setting the code on the transmitter:
 - a. Remove the battery cover. Press firmly below the arrow and slide battery cover off.
 - b. Slide the frequency switches to your choice of up or down position. (Factory setting is all up). Do not use this Position. Use a small screwdriver or a ballpoint pen to slide firmly up or down (Figure A).
 - c. For use with incandescent bulbs, use the “D” setting for full range dimming. For fans that use Fluorescent or LED bulbs, use the “ON” setting for the light to have ON/OFF functions only.
 - d. Replace the battery cover on the transmitter.
- B. Setting the code on the receiver:
 - a. Slide the frequency switches to the same positions as set on your transmitter (Figure B).

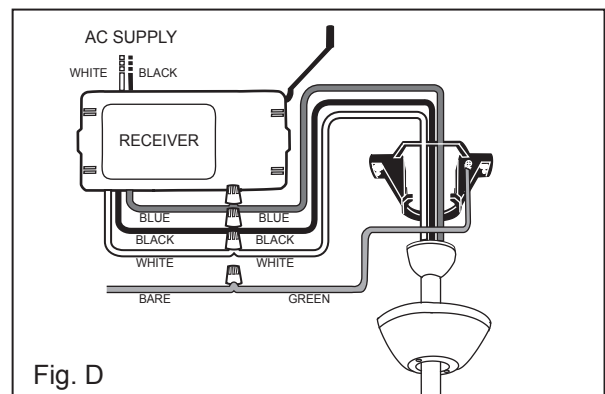
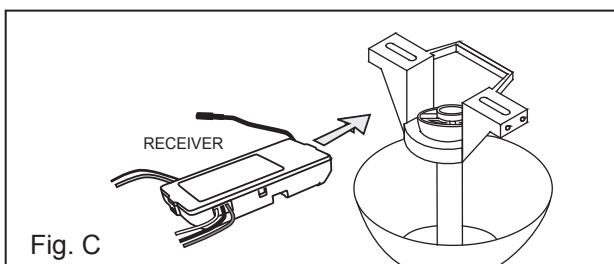


2. INSTALLING RECEIVER IN THE CEILING FAN

- A. Safety precautions:

WARNING: HIGH VOLTAGE! Household electrical power can cause serious injury or death. Disconnect the source of electrical power to the ceiling fan by removing the fuse or switching off the circuit breaker.
- B. Installing receiver in fan.:
 - a. Remove the ceiling fan canopy from the mounting bracket.
 - b. Disconnect the existing wiring between the ceiling fan and supply at the electrical junction box.
 - c. Lay the black antenna wire on top of the receiver, and put the receiver in the mounting bracket. (Fig. C)
 - d. Make the connections as follows, using the wire nuts supplied: (Fig. D)

CONNECT	TO
Green fan wire.....	Bare supply wire
Black receiver wire (AC IN L).....	Black supply wire
White receiver wire (AC IN N).....	White supply wire
White receiver wire (TO MOTOR N).....	White fan wire
Black receiver wire (TO MOTOR L).....	Black fan wire
Blue receiver wire (FOR LIGHT).....	Blue light wire



If there are wires with different colors, have this unit installed by a qualified electrician.

- e. Push all connected wires up into junction box.
- f. Reinstall the canopy on the mounting bracket.
- g. Restore the electrical power.

3. OPERATING TRANSMITTER:

- A. Install 12V MN21/A23 battery (included). To prevent damage to transmitter, remove the battery if not used for long periods. (Figure E)

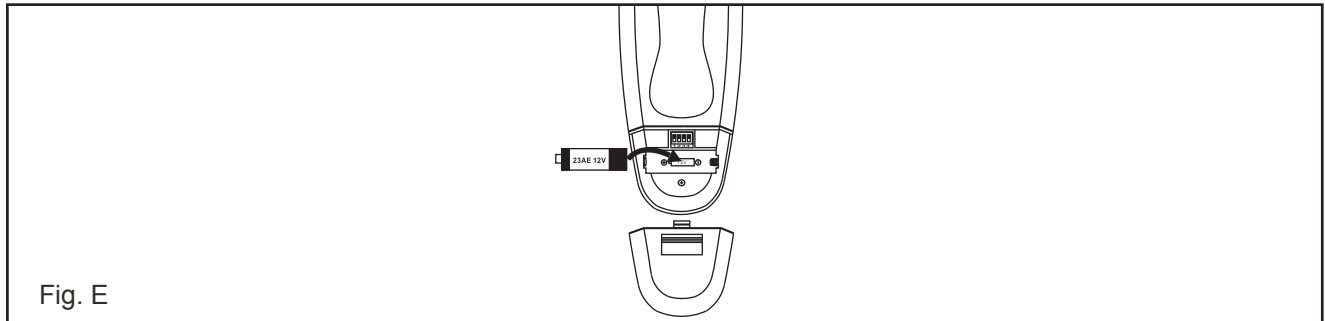


Fig. E

- B. Store the transmitter away from excess heat or humidity.
- C. This remote control unit is equipped with 16 code combinations to prevent possible interference from or to other remote units such as garage door openers, car alarm or security system. If you find that your fan and light kit go on and off without using your remote control, simply change the combination code in your transmitter and receiver.
- D. Operation buttons on the panel of the transmitter: (Figure F)
The "HI, MED, LOW" buttons:
These three buttons are used to set the fan speed as follows:
LOW= Low speed **MED**= Medium speed **HI**= High speed

The "OFF" button:

This button turns the fan off.



The " " button:

For fans that use incandescent bulbs, select "D" in the frequency switches, this " " button will control the light brightness. Hold the " " key down to increase or decrease the light. Tap the " " key quickly to turn the light off or on. If you press the button in excess of 0.7 seconds it becomes a dimmer. The light varies cyclically in 0.8 seconds. The light key has auto resume, so it will stay at the same brightness as the last time it was turned off.

For fans that use Fluorescent or LED bulbs, select "ON" in the frequency switches, this button will control the light ON/OFF only.

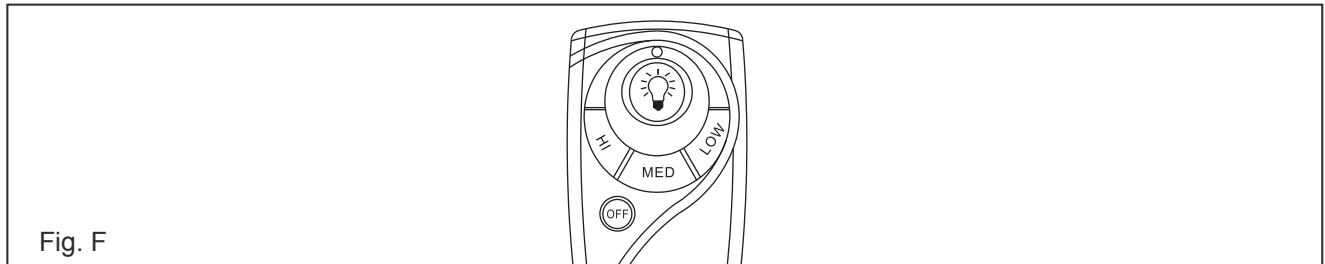


Fig. F

YOUR REMOTE NOW HAS FULL CONTROL OF THE FAN AND LIGHT.

4. TROUBLESHOOTING GUIDE

A. Fails to operate:

- a. Power to the receiver?
- b. Receiver wired correctly?
- c. Fan manual speed control in highest position?
- d. Light kit switch turned on?
- e. Good battery in the transmitter?
- f. Code set at exact same position in both transmitter and receiver?

B. Won't operate at distance:

If transmitter operates the fan and the light kit when up close, but not a 30 feet away, try placing the black antenna wire higher; up through the ceiling, outside the junction box.

NOTICE!

Your ceiling fan and light kit assembly must meet the following requirements:

- 1. Do not use with solid state fans.
- 2. Electrical rating: 120V / 60 Hz
MAX. motor amps: 1.0 A
MAX. light watts: 300 W

Distributed by Home Depot U.S.A., Inc.
2455 Paces Ferry Rd. N.W.
Atlanta, Georgia 30339

TOLL FREE 1-877-902-5588

Free Manuals Download Website

<http://myh66.com>

<http://usermanuals.us>

<http://www.somanuals.com>

<http://www.4manuals.cc>

<http://www.manual-lib.com>

<http://www.404manual.com>

<http://www.luxmanual.com>

<http://aubethermostatmanual.com>

Golf course search by state

<http://golfingnear.com>

Email search by domain

<http://emailbydomain.com>

Auto manuals search

<http://auto.somanuals.com>

TV manuals search

<http://tv.somanuals.com>