

# INSTRUCTIONS

## MODEL SWS40 WATER SUPPLY SYSTEM

SWS40

ML-110639



WORLD HEADQUARTERS  
701 RIDGE AVENUE  
TROY, OHIO 45374-0001

# INSTALLATION INSTRUCTIONS MODEL SWS40 WATER SUPPLY SYSTEM

## SAVE THESE INSTRUCTIONS

Your Hobart SWS40 Water Supply System pumps water from the dishwasher prewash tank to the WS800 or WS1000 waste equipment.

## INSTALLATION

**IMPORTANT:** This system must be installed by qualified Hobart Service representatives only.

**IMPORTANT:** This system is recommended for use in Hobart Commercial Dishwashers only.

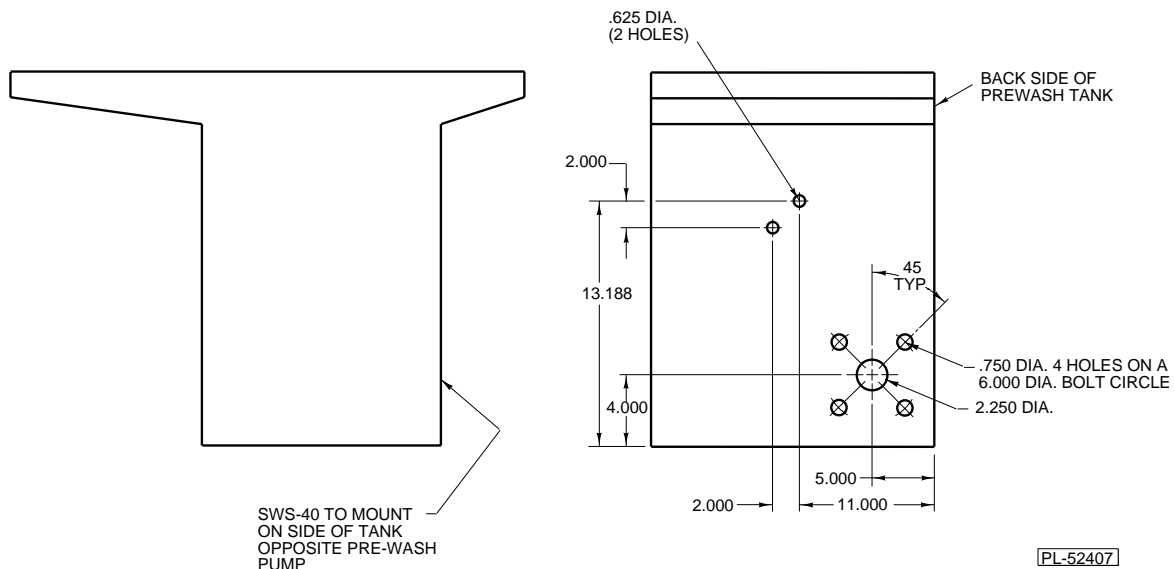
### UNPACKING

Immediately after unpacking the SWS40 Water Supply System, check for possible shipping damage. If the system is found to be damaged, save the packaging material and contact the carrier within 15 days of delivery.

### MODIFY THE DISHWASHER TANK (Fig's. 1-7)

Location of the SWS40 water supply system may not be the same on all models.

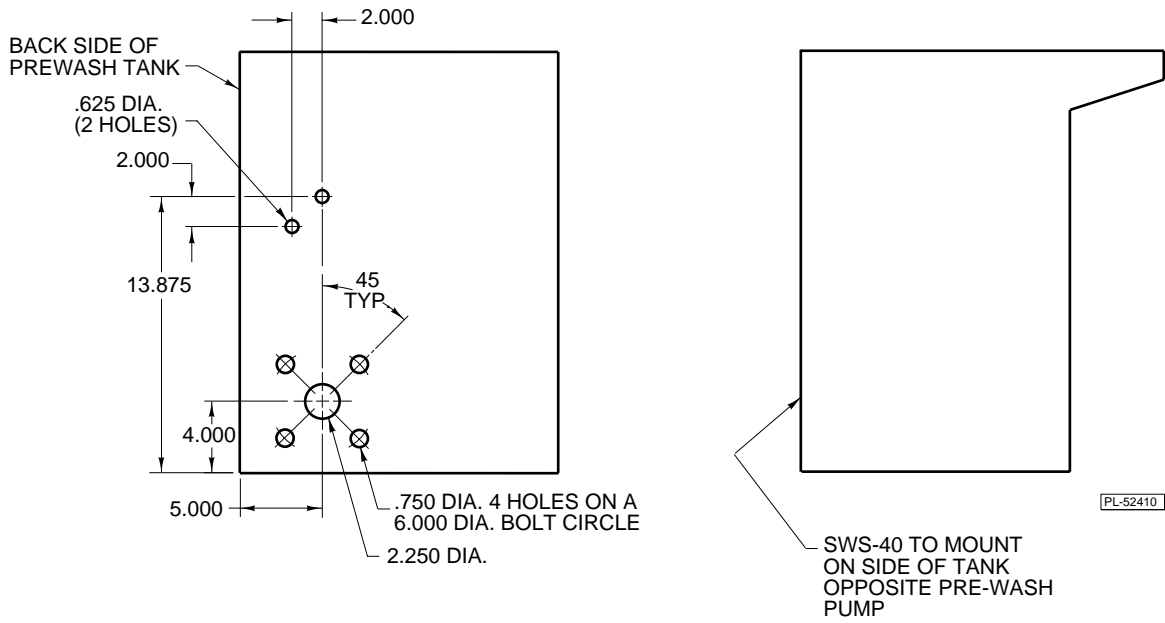
1. Drill two .625 diameter holes in the prewash tank for mounting the float switch box.
2. Drill four .750 diameter holes and one 2.25 diameter hole for mounting the pump.



L-R SHOWN  
R-L OPPOSITE

FT800 / FTM800  
PRE-WASH TANK MODIFICATION

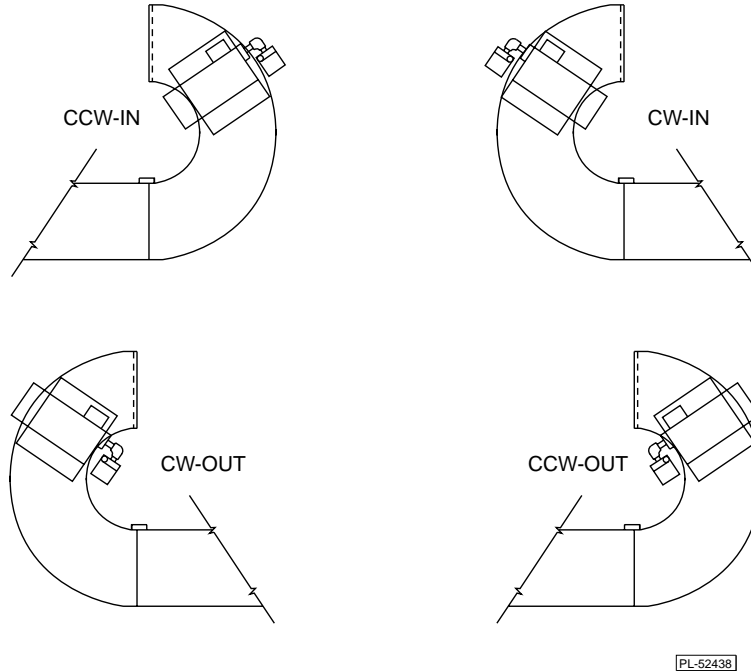
Fig. 1



L-R SHOWN  
R-L OPPOSITE

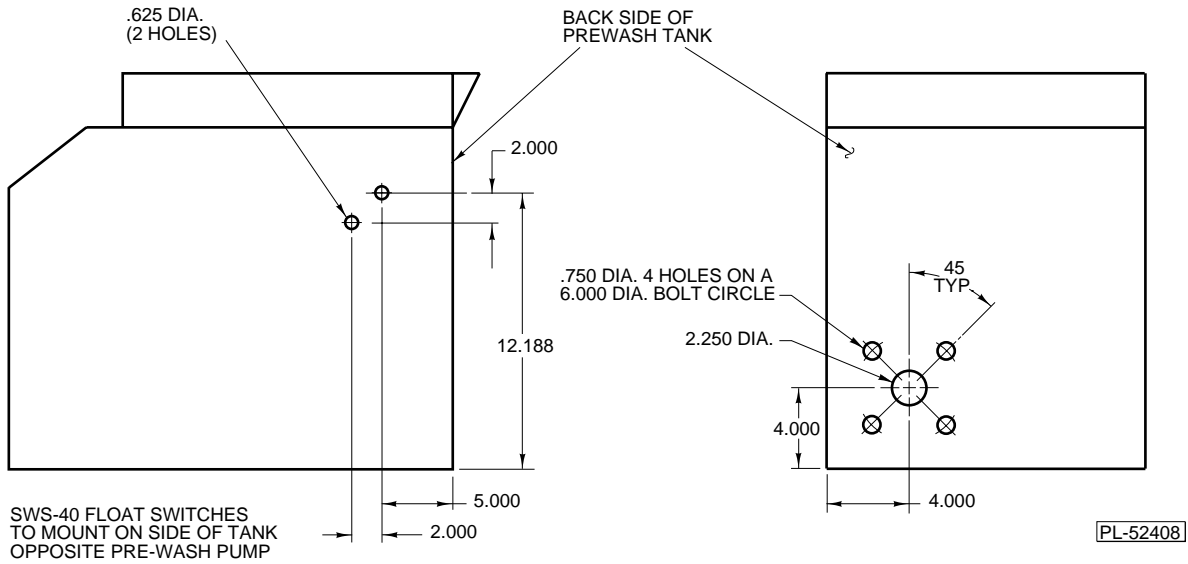
**RS-22A / RS-36A  
PRE-WASH TANK MODIFICATION**

Fig. 2



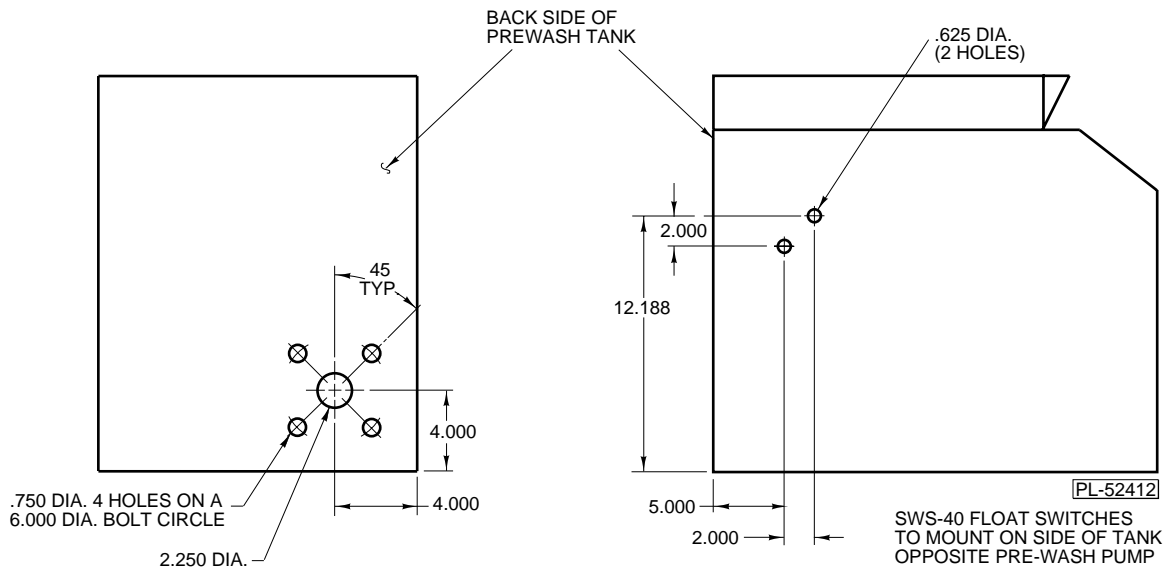
**RS-22 ON CURVE  
SCRAP BASKET INSIDE OR OUTSIDE  
CLOCKWISE OR COUNTERCLOCKWISE LAYOUT  
(See Pages 4 & 5 for Individual Tank Modifications)**

Fig. 3



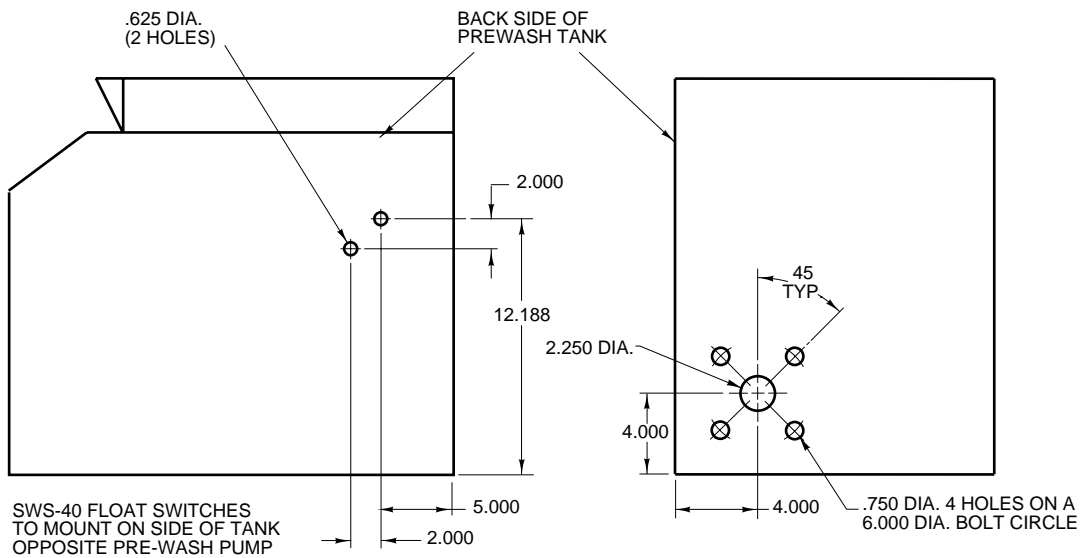
**RS-22 ON CURVE  
TANK MODIFICATION  
(CLOCKWISE - SCRAP BASKET INSIDE)**

Fig. 4



**RS-22 ON CURVE  
TANK MODIFICATION  
(CLOCKWISE - SCRAP BASKET OUTSIDE)**

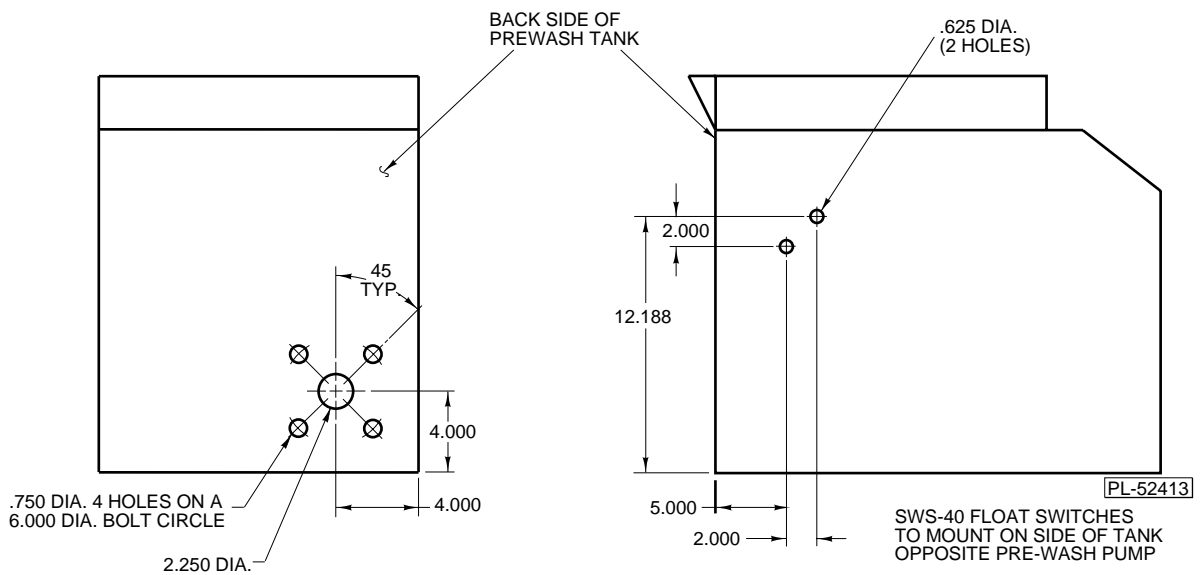
Fig. 5



PL-52409

**RS-22 ON CURVE  
TANK MODIFICATION  
(COUNTERCLOCKWISE - SCRAP BASKET OUTSIDE)**

Fig. 6



PL-52413

**RS-22 ON CURVE  
TANK MODIFICATION  
(COUNTERCLOCKWISE - SCRAP BASKET INSIDE)**

Fig. 7

## MOUNT FLOAT SWITCH BOX AND FLOAT SWITCHES (Fig. 8)

### Assemble Float to Switch

1. Hook float into the float retainer.
2. Slide float over barrel of switch and retainer, along with the retainer ring, until it snaps into the groove of the probe and switch assembly. The float must be assembled to the bottom side of the probe.
3. Place the O-ring over the threaded end of the probe and switch assembly.
4. Insert the probe and switch assembly through the prewash tank and float switch box. Secure with washer, lockwasher and hex nut.
5. Repeat the above procedures for the second float switch.

### Mount Float Switch Box

Location of the SWS40 water supply system may not be the same on all models.

Slide lid and gasket assembly over the mounting studs. Secure with locknuts.

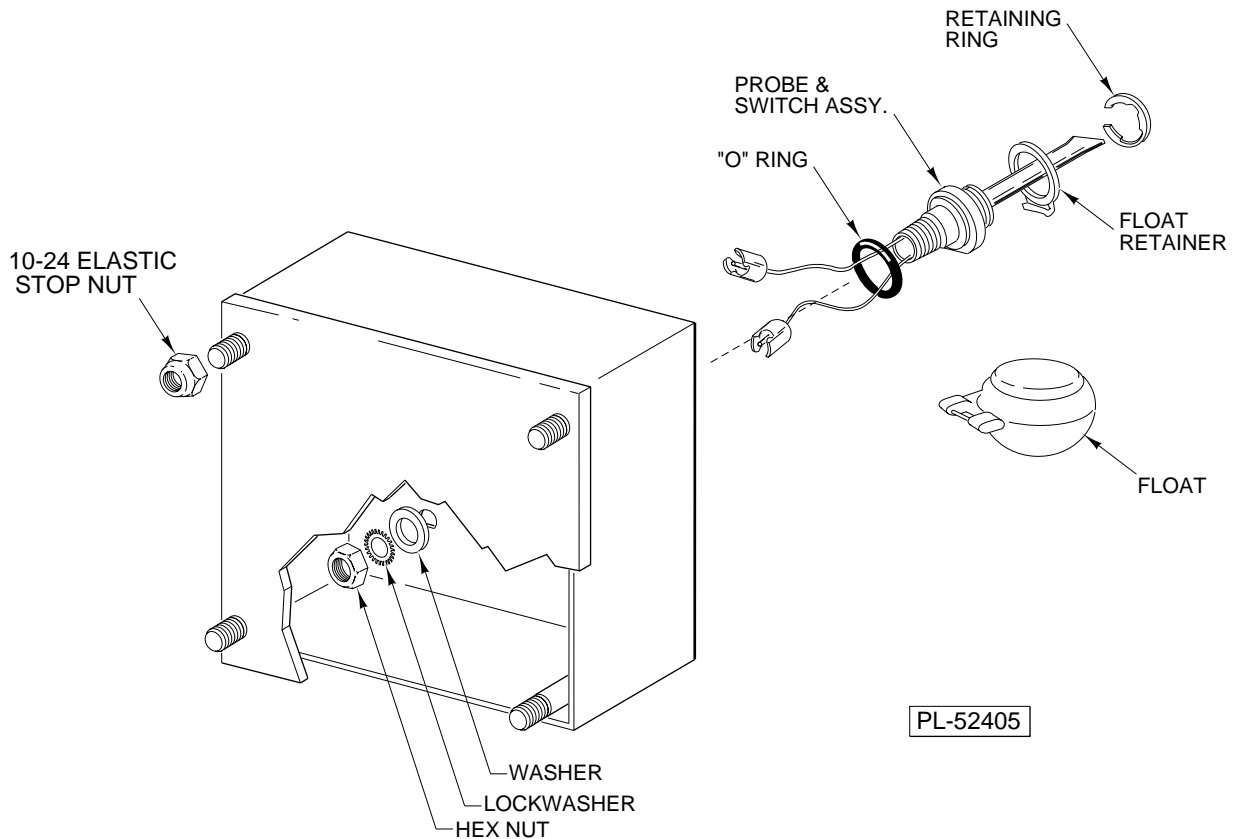
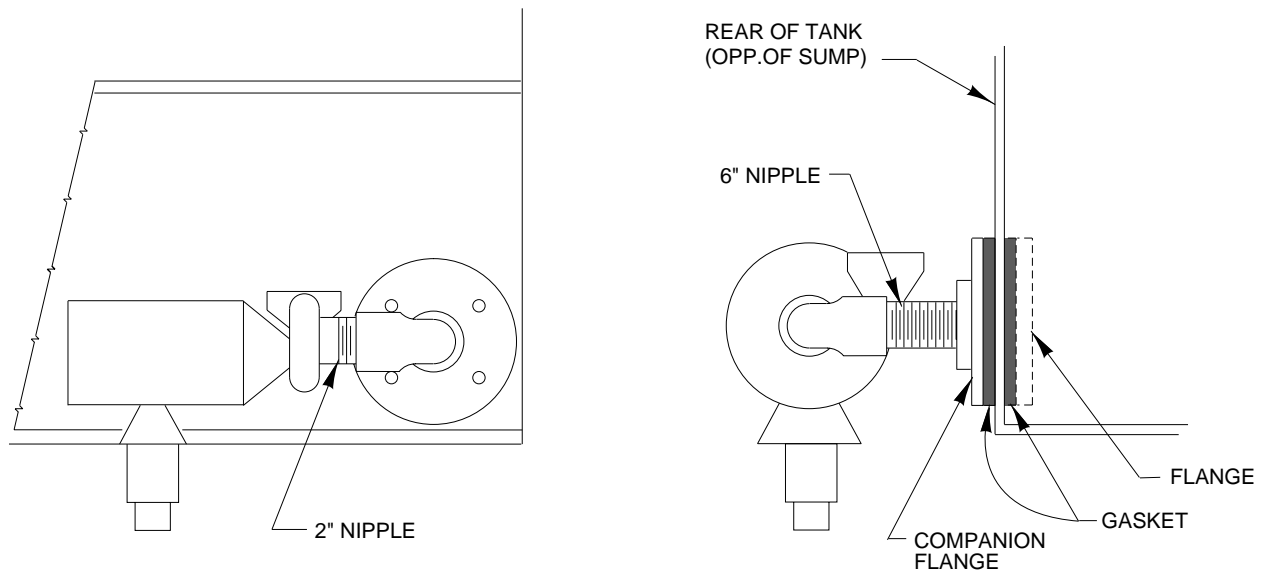


Fig. 8

## PUMP ASSEMBLY (Fig. 9)

The pump assembly and motor are already assembled.

1. Install the leg on the pump. Attach with four bolts, lockwashers and nuts supplied.
2. Screw the 2" nipple into the pump.
3. Screw the elbow into the 2" nipple.
4. Screw the 6" nipple into the elbow.
5. Screw the flange into the 6" nipple. When tightening the flange, the mounting holes must align with the drilled holes in the prewash tank.



PL-52406

### TYPICAL SWS40 PUMP MOUNTING RS ON CURVE SHOWN

Fig. 9

## Mount Pump Assembly to the Prewash Tank

1. Install two gaskets, one to the inside and one to the outside of the prewash tank wall.
2. Install the flange (Fig. 9) to the gasket inside the tank.
3. Apply sealer between tank and gasket (both sides).
4. Bolt pump, gaskets and inside flange to the prewash tank, using four bolts, lockwashers and nuts supplied.

## ELECTRICAL CONNECTIONS

**WARNING:** ELECTRICAL AND GROUNDING CONNECTIONS MUST COMPLY WITH THE APPLICABLE PORTIONS OF THE NATIONAL ELECTRICAL CODE AND/OR OTHER LOCAL ELECTRICAL CODES.

**WARNING:** DISCONNECT ELECTRICAL POWER SUPPLY AND PLACE A TAG AT THE DISCONNECT SWITCH INDICATING THAT YOU ARE WORKING ON THE CIRCUIT.

**WARNING:** REPLACE FUSE ONLY WITH SAME TYPE AND RATING.

Wire the switch assemblies and motor to the terminals provided in the wall-mounted control box or waterpress tower, using the wire nuts provided. Refer to the electrical wiring diagram located in the control box for wiring SWS40 option.

## PLUMBING

**WARNING:** PLUMBING CONNECTIONS MUST COMPLY WITH APPLICABLE SANITARY, SAFETY, AND PLUMBING CODES.

Install check valve, ball valve and piping (Fig. 10) between the dishwasher and pulper at the time of installation. Use pipe sealant at every pipe joint.

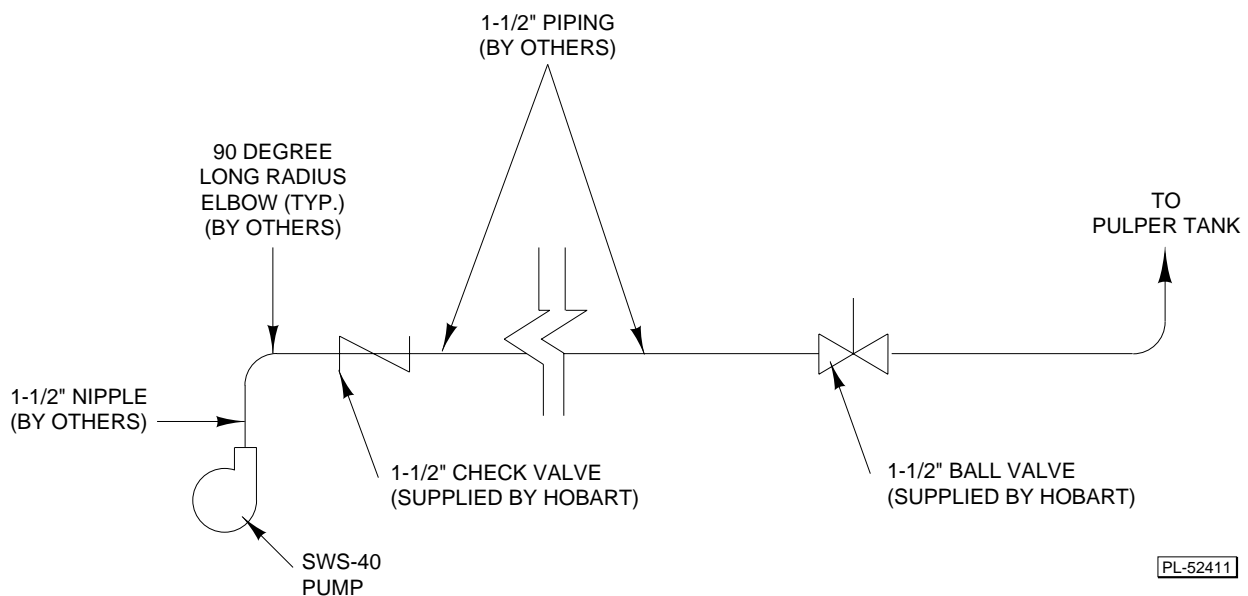


Fig. 10



## Free Manuals Download Website

<http://myh66.com>

<http://usermanuals.us>

<http://www.somanuals.com>

<http://www.4manuals.cc>

<http://www.manual-lib.com>

<http://www.404manual.com>

<http://www.luxmanual.com>

<http://aubethermostatmanual.com>

Golf course search by state

<http://golfingnear.com>

Email search by domain

<http://emailbydomain.com>

Auto manuals search

<http://auto.somanuals.com>

TV manuals search

<http://tv.somanuals.com>