

## 5800MINI 1- Zone Door/Window Transmitter – Installation Instructions

### FEATURES

- Single zone Door/Window Transmitter
- Compatible with alarm systems that support 5800 series wireless devices
- Built-in unique serial number which must be enrolled into the control panel
- Refer to the control panel's installation instructions for programming details.



### LED Indicators

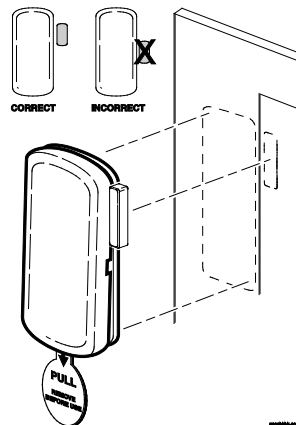
LED	Meaning
Blue	Lights when the magnet is within proper range of the 5800MINI (1 inch max). LED is active for 15 minutes after battery is first installed or when the cover is removed.
Green	Flashes when the 5800MINI transmits. LED is active for 15 minutes after battery is first installed or when cover is removed.
Red	Upon low battery condition, flashes once about every five seconds for two minutes after a transmission.

### MOUNTING

- Choose a mounting location where the device is stationary and the magnet is mounted to the moving part of the door or window.
- Verify adequate signal strength by using the control panel's Go/No Go test (see control's instructions) before mounting permanently.
- Avoid mounting in areas where it will be exposed to moisture or where the operating temperature of 32 to 120°F (0 to 50°C) will be exceeded.
- Keep the 5800MINI and magnet away from metal or metallic surfaces such as foil wallpaper.
- Avoid mounting the 5800MINI in areas with a large quantity of metal or electrical wiring, such as a furnace or utility room.

#### 1. Mount the 5800MINI & Magnet

- Mount the 5800MINI** on the frame of the protected door or window using double-faced tape (supplied).
- Mount the magnet** (supplied) on the protected door or opening portion of the protected window. Check that the blue LED lights when the door or window is closed.



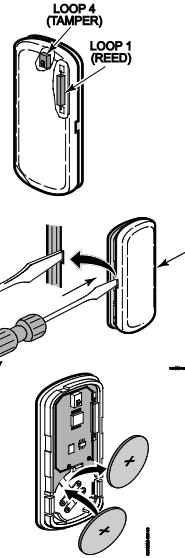
#### 2. Pull the Battery Tab

Snap the cover in place after pulling tab. The blue and green LEDs will be active for 15 minutes. To reactivate, remove the cover.

## PROGRAMMING

Refer to the control panel's installation instructions for programming and enrolling the 5800MINI.

1. Enter Programming mode at the control. Assign a zone number to loop 1 and assign as Input Type 3 (Supervised RF).
2. To enroll the serial number, activate the transmitter twice by moving the magnet close to and away from the module.  
Alternatively, enter the device serial number manually when prompted.



## BATTERY REPLACEMENT

1. Open the cover and remove the old battery.
2. Install a fresh battery with + side UP. See Specifications section for compatible batteries.
3. Replace the cover.

## SPECIFICATIONS

<b>Dimensions:</b>	Transmitter: 1" (25.4mm) x 2.2" (55.9mm) x 0.25" (6.4mm) Magnet: 0.25" (6.35mm) x 0.25" (6.35mm) x 1" (25.4mm)
<b>Operating Conditions:</b>	32°F (0°C) to 120°F (50°C) Relative Humidity 95%, (non-condensing); UL Tested at 85%
<b>Magnet Gap:</b>	1" (25.4mm) max.
<b>Battery:</b>	3VDC, 225mAh, Lithium Coin Cell; Panasonic CR2032,

### FEDERAL COMMUNICATIONS COMMISSION STATEMENT

The user shall not make any changes or modifications to the equipment unless authorized by the Installation Instructions or User Manual. Unauthorized changes or modifications could void the user's authority to operate the equipment

### FCC/IC STATEMENT

This device complies with Part 15 of the FCC Rules, and RSS-210 of Industry Canada (IC). Operation is subject to the following two conditions: (1) This device may not cause harmful interference (2) This device must accept any interference received, including interference that may cause undesired operation.

Cet appareil est conforme à la partie 15 des règles de la FCC & de RSS-210 des Industries Canada. Son fonctionnement est soumis aux conditions suivantes: (1) Cet appareil ne doit pas causer d'interférences nuisibles. (2) Cet appareil doit accepter toute interférence reçue y compris les interférences causant une réception indésirable.

REFER TO THE INSTALLATION INSTRUCTIONS FOR THE CONTROL WITH WHICH THIS DEVICE IS USED, FOR DETAILS REGARDING LIMITATIONS OF THE ENTIRE ALARM SYSTEM.

### SUPPORT & WARRANTY

For the latest documentation and online support information, please go to:  
<https://mywebtech.honeywell.com/>

For the latest warranty information, please go to:  
[www.honeywell.com/security/hsc/resources/wa](http://www.honeywell.com/security/hsc/resources/wa).  
For patent information: [www.honeywell.com/patents](http://www.honeywell.com/patents)



MyWebTech



Warranty



Patents

## Honeywell

2 Corporate Center Drive, Suite 100  
P.O. Box 9040, Melville, NY 11747  
Copyright © 2016 Honeywell International Inc.  
[www.honeywell.com/security](http://www.honeywell.com/security)



800-22088 6/16 Rev B

## Free Manuals Download Website

<http://myh66.com>

<http://usermanuals.us>

<http://www.somanuals.com>

<http://www.4manuals.cc>

<http://www.manual-lib.com>

<http://www.404manual.com>

<http://www.luxmanual.com>

<http://aubethermostatmanual.com>

Golf course search by state

<http://golfingnear.com>

Email search by domain

<http://emailbydomain.com>

Auto manuals search

<http://auto.somanuals.com>

TV manuals search

<http://tv.somanuals.com>