

## ECS-50WBU Installation Instructions

The ECS-50WBU provides backup capability when operating the ECS-DUAL50W in the 100 watt with backup mode for both single and dual channel setups.

### Compatibility

The ECS-50WBU is compatible with the following Honeywell Farenhyt Series FACP's:

- IFP-2000ECS    • IFP-2100ECS
- IFP-1000ECS   • IFP-300ECS
- IFP-100ECS

### Mounting and Wiring

The ECS-50WBU mounts above the ECS-DUAL50W board on the standoffs provided.

1. Remove AC power from the ECS-DUAL50W.
2. Disconnect the backup batteries from the ECS-DUAL50W.
3. Connect one end of the supplied wiring harness (P/N 50116775-001) from the connector labeled "Backup Amplifier" on the ECS-DUAL50W to the connector on the ECS-50WBU as shown in : Wiring Harness Connection.
4. Using the 4 supplied screws, mount the ECS-50WBU to the standoff's as shown in : Wiring Harness Connection.
5. Restore AC Power.
6. Reconnect backup batteries.

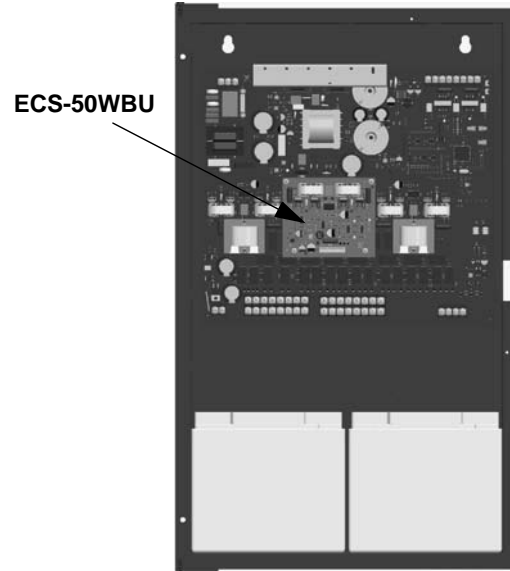


Figure 1: Mounting Location for the ECS-50WBU

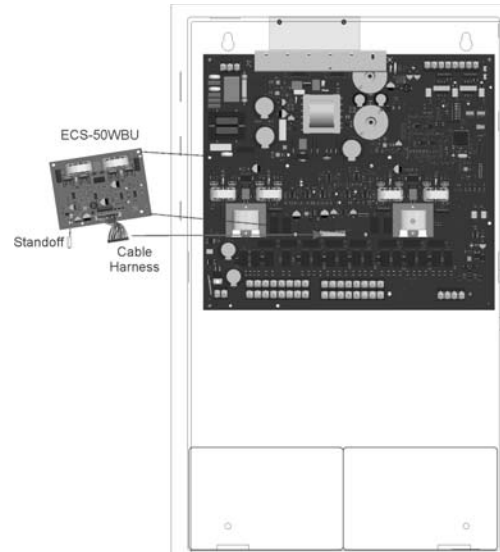


Figure 2: Wiring Harness Connection

**Honeywell**  
12 Clintonville Road  
Northford, CT 06472-1610 USA  
203-484-7161  
Fax: 203-484-7118  
www.farenhyt.com

© 2017 Honeywell International Inc.

Farenhyt™ is a trademark, and Honeywell® is a registered trademark of Honeywell International, Inc.

## Free Manuals Download Website

<http://myh66.com>

<http://usermanuals.us>

<http://www.somanuals.com>

<http://www.4manuals.cc>

<http://www.manual-lib.com>

<http://www.404manual.com>

<http://www.luxmanual.com>

<http://aubethermostatmanual.com>

Golf course search by state

<http://golfingnear.com>

Email search by domain

<http://emailbydomain.com>

Auto manuals search

<http://auto.somanuals.com>

TV manuals search

<http://tv.somanuals.com>