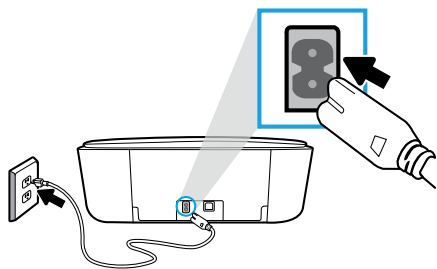
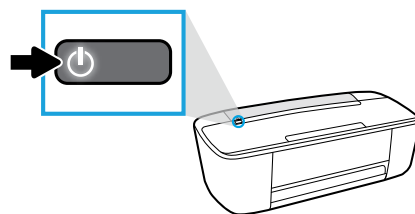


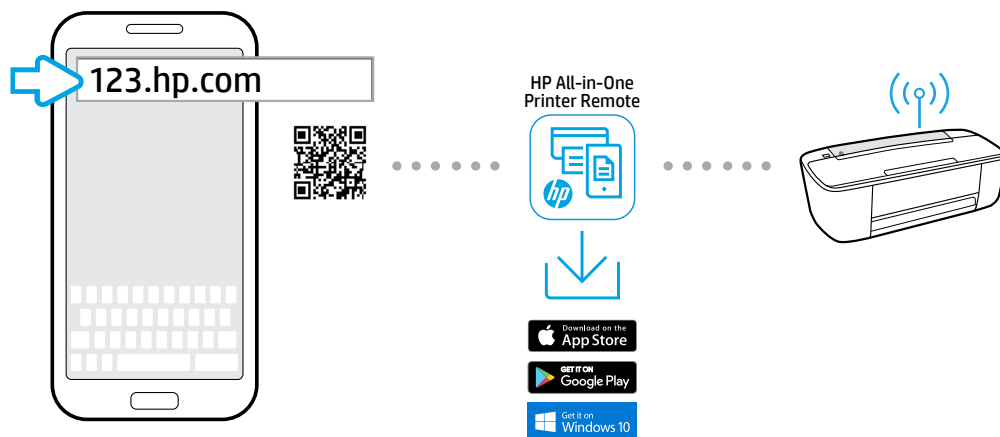
1



2



3



EN Begin printer setup at 123.hp.com

Start by entering **123.hp.com** in a web browser, or scan the QR code. You will download and install the HP mobile app or printer software, and be guided through setup. If your device does not support iOS or Android™, you should still go to **123.hp.com** to get started.

i Each mobile device or computer will need to install the HP mobile app or software from 123.hp.com to print and scan.

Need help? www.hp.com/support/AMP100

Note for Windows® users: You may also order a printer software CD. Please visit www.support.hp.com.

ES Comience la configuración de la impresora en 123.hp.com

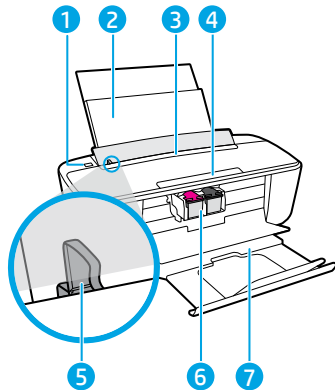
Escriba **123.hp.com** en el navegador web o escanee el código QR. Descargue e instale la aplicación móvil o el software de la impresora HP y recibirá una guía para la configuración. Si su dispositivo no es compatible con iOS o Android™, igualmente debe ir a **123.hp.com** para comenzar.

i Deberá instalar el software o la aplicación móvil de HP en cada dispositivo móvil o equipo desde **123.hp.com** para imprimir y escanear.

¿Necesita ayuda? www.hp.com/support/AMP100

Nota para usuarios de Windows®: también se puede pedir el CD con el software de la impresora. Visite www.support.hp.com.

- 1 USB charging port
- 2 Paper input tray
- 3 Printer control panel
- 4 Audio control panel
- 5 Paper-width guide
- 6 Cartridges
- 7 Paper output tray

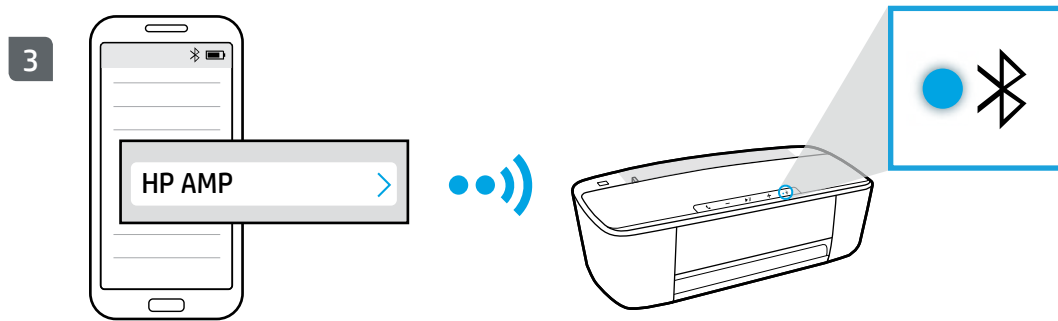
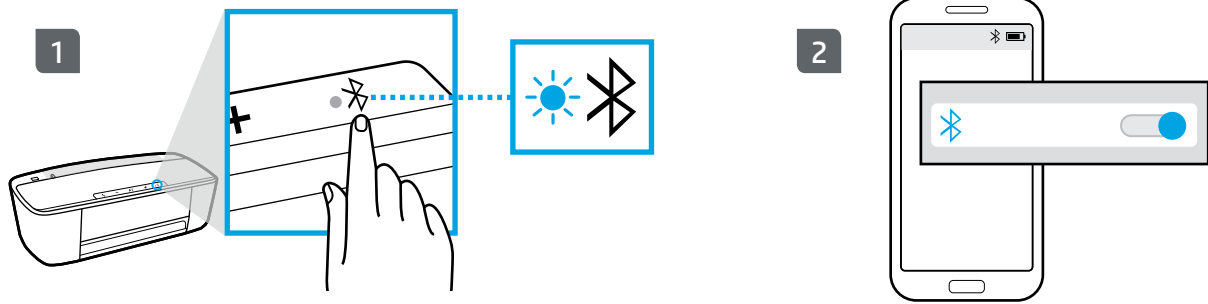


- 1 Puerto de carga USB
- 2 Bandeja de entrada del papel
- 3 Panel de control de la impresora
- 4 Panel de control de audio
- 5 Guía de anchura del papel
- 6 Cartuchos
- 7 Bandeja de salida de papel



T8X39-90046

4



EN Pair the speaker to your Bluetooth device

Make sure your device is within 10 m/30 ft of the printer, then...

1. Press until the light flashes. When the light flashes, the printer is in Bluetooth pairing mode.
2. Make sure Bluetooth is enabled on your mobile device.
3. On your mobile device, search for available Bluetooth devices, then select **HP AMP** from the list.

When the Bluetooth light changes from flashing to on, your mobile device and speaker are paired, and you are ready to stream music to the speaker through your music apps.

To use the speaker system...

- Press to listen to an incoming call on the speaker. Press again to end the call. If you want to reject the call, press and hold the until the call is rejected.
- Press to increase or to decrease speaker volume.
- Press to play or pause the audio stream. Press to mute and unmute a phone call.
- Press to turn Bluetooth on and off. Press and hold for five seconds to reset Bluetooth.




The speaker audio is stopped during printing to ensure the best print quality. It automatically resumes again shortly after printing is completed.

Want to pair more devices?

When you want to pair additional devices, make sure no other Bluetooth devices are connected to the speaker, then follow steps 1 through 3 above. Up to eight paired Bluetooth devices can be stored in the printer memory. Two Bluetooth devices stored in the printer memory can be connected to the speaker at the same time.





ES Conexión del altavoz a un dispositivo Bluetooth




Asegúrese de que el dispositivo se encuentra a 10 m/30 pies de la impresora y después...

1. Pulse  hasta que parpadee el indicador luminoso. Cuando sucede esto, la impresión está en el modo de conexión por Bluetooth.
2. Asegúrese de que la función Bluetooth esté activada en su dispositivo móvil.
3. En el dispositivo móvil, busque los dispositivos Bluetooth y luego seleccione **HP AMP** en la lista.

Cuando el indicador luminoso de Bluetooth deja de parpadear y permanece encendido, su dispositivo móvil y el altavoz están conectados y está listo para transmitir música al altavoz a través de las aplicaciones de música.


Para utilizar el sistema de altavoces...

 Pulse  para escuchar una llamada entrante en el altavoz. Vuelva a pulsar  para terminar la llamada. Si quiere rechazar la llamada, mantenga pulsado  hasta que esto sucede.

 Pulse  para aumentar o  para disminuir el volumen del altavoz.

 Pulse  para reproducir o pausar el audio. Pulse  para activar o desactivar el silencio de una llamada telefónica.

 Pulse  para activar o desactivar el Bluetooth. Mantenga pulsado  durante cinco segundos para restaurar la función Bluetooth.

 El audio que se emite por el altavoz se detiene durante la impresión para garantizar la mejor calidad de impresión. Se reanuda automáticamente después de que finaliza la impresión.

¿Desea conectar más dispositivos?

Cuando desee conectar dispositivos adicionales, asegúrese de que no haya otros dispositivos Bluetooth conectados al altavoz y siga los pasos 1 a 3 indicados anteriormente. La memoria de la impresora puede almacenar hasta ocho dispositivos Bluetooth conectados. Se pueden conectar al altavoz dos dispositivos Bluetooth a la vez que estén almacenados en la memoria de la impresora.

HP Instant Ink



SAVE UP TO

50%

ON INK¹

Activate this service during printer setup.

hpinstantink.com

3

MONTH FREE TRIAL²

Original HP Ink ordered by your printer, delivered to your door.

- Your printer orders ink, so you'll always have it.³
- Ink, shipping and cartridge recycling are included.
- Monthly plans are based on pages printed, not cartridges used.
- No annual fee—Change or cancel plans online anytime.⁴

¹ **(US)** Savings claim is based on HP Instant Ink Service plan price for 12 months using all pages in plan without purchase of additional pages compared to the cost per page ("CPP") of the majority of color inkjet printers <\$399 USD, market share reported by IDC CYQ1 2016. CPP comparisons for standard-capacity inkjet supplies are based on estimated street price and page yield as reported by gap intelligence AiO Weekly and IJP Weekly Report 5/15/16. Actual savings may vary depending on number of pages actually printed per month and content of pages printed.

¹ **(CAN)** Savings claim is based on HP Instant Ink Service plan price for 12 months using all pages in plan without purchase of additional pages compared to cost per page ("CPP") of the majority of color inkjet printers <\$399 CAD IDC Q2 2015 market share data. CPP comparisons for standard-capacity inkjet supplies are based on advertised price and page yield as reported by original equipment manufacturers (OEM) websites as of October 2015. Actual savings may vary depending on number of pages actually printed per month and content of pages printed.

² Offer valid only on certain printers with the included HP Instant Ink Ready cartridges. Must complete HP Instant Ink sign up within 7 days of setting up the printer with the HP-recommended setup process as indicated in the instructions that came with your printer. One offer redeemable per printer. Offer valid through 12/31/2017. Offer cannot be redeemed for cash. Setup Offer may be combined with other offers; see terms and conditions of the other offer for more details. Requires a valid credit/debit card, an email address, and Internet connection to printer. Unless service is cancelled within the promotional period online at hpinstantink.com, a monthly service fee, based on the plan chosen, plus tax and overage fees will be charged to your credit/debit card. Customer will be charged for any overage fees and applicable taxes at the end of each month in the promotional period. See additional offer information available during online sign-up process. For service details, see hpinstantink.com.

³ Based on plan usage, Internet connection to eligible HP printer, valid credit/debit card, email address, and delivery service in your geographic area.

⁴ When upgrading the plan you can choose for the change to take effect in the current billing cycle or the next billing cycle. Cancellations and plan downgrades are effective after the last day of the current billing period. For service details, see hpinstantink.com.

Free Manuals Download Website

<http://myh66.com>

<http://usermanuals.us>

<http://www.somanuals.com>

<http://www.4manuals.cc>

<http://www.manual-lib.com>

<http://www.404manual.com>

<http://www.luxmanual.com>

<http://aubethermostatmanual.com>

Golf course search by state

<http://golfingnear.com>

Email search by domain

<http://emailbydomain.com>

Auto manuals search

<http://auto.somanuals.com>

TV manuals search

<http://tv.somanuals.com>