



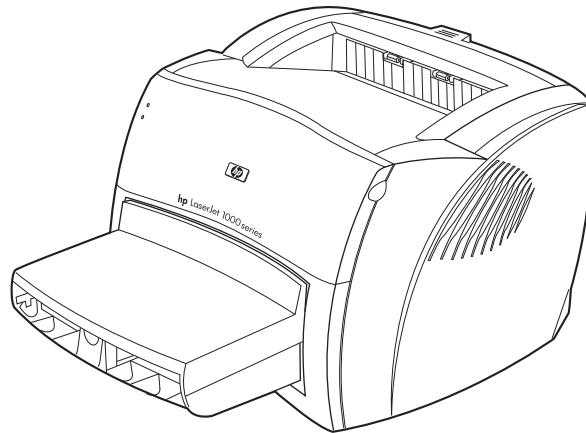
use

hp LaserJet 1000





# HP LaserJet 1000 Series Printer



## User Guide

**© Copyright Hewlett-Packard Company 2001**

All Rights Reserved. Reproduction, adaptation, or translation without prior written permission is prohibited, except as allowed under the copyright laws.

A user of the Hewlett-Packard printer associated with this user guide is granted a license to: a) print hard copies of this user guide for PERSONAL, INTERNAL or COMPANY use subject to the restriction not to sell, re-sell or otherwise distribute the hard copies; and b) place an electronic copy of this user guide on a network server, provided access to the electronic copy is limited to PERSONAL, INTERNAL users of the Hewlett-Packard printer associated with this user guide.

The information contained in this document is subject to change without notice.

Publication number:  
Q1342-online  
Edition 3, 4/2009

**Trademark Credits**

Microsoft®, MS Windows, Windows®, and MS-DOS® are U.S. registered trademarks of Microsoft Corporation.

ENERGY STAR® is a U.S. registered mark of the United States Environmental Protection Agency.

Netscape is a U.S. trademark of Netscape Communications Corporation.

Zenographics is a U.S. trademark of Zenographics, Incorporated.

All other products mentioned herein may be trademarks of their respective companies.

# Content

## 1 Getting started

Review the package contents	8
Prepare the location	8
Regulate the environment	9
Install the printer software	9
Prepare the toner cartridge	10
Install the toner cartridge	10
Load the input tray	10
Connect the USB cable	11
Connect the power cord	11
Troubleshooting the printer	12
Installation is complete	12

## 2 Getting to know the printer

Identifying the printer's components	14
Status lights	15
Printer input tray	15
Printer media guides	16
Printer output paths	16
Toner door	17
Turning the power off	18
Understanding voltage conversions	18

## 3 Media

Choosing paper and other media	20
Optimizing print quality for media types	20
Loading media into the input tray	21
Specific types of media	21
Printing transparencies and labels	22
Printing envelopes	23
Printing letterhead and preprinted forms	24
Printing custom-sized media and card stock	25

## 4 Printing tasks

Accessing the printer properties (driver) and help	28
Printer properties (driver)	28
Printer properties online help	29
Printing watermarks	30
Printing multiple pages on a single sheet of media (N-up printing)	30
Canceling a print job	31
Understanding print quality settings	31
Using EconoMode (Save Toner)	31

## 5 Managing the toner cartridge

Using HP toner cartridges . . . . .	34
HP policy on non-HP toner cartridges . . . . .	34
Storing toner cartridges . . . . .	34
Toner cartridge life expectancy . . . . .	34
Recycling toner cartridges . . . . .	34
Saving toner . . . . .	34
Redistributing toner . . . . .	35
Changing the toner cartridge . . . . .	36

## 6 Troubleshooting the printer

Finding the solution . . . . .	38
Pages did not print . . . . .	38
Pages printed, but there was a problem . . . . .	38
Software is installed, but pages did not print. . . . .	38
Status light patterns . . . . .	39
Error messages on the screen . . . . .	41
Media handling problems . . . . .	42
Printed page is different than what appeared on screen. . . . .	43
Printer software problems . . . . .	44
Improving print quality . . . . .	45
Cleaning the printer . . . . .	48
Cleaning the printer media path . . . . .	50
Clearing printer media jams. . . . .	51
Changing the pickup roller. . . . .	53
Cleaning the pickup roller . . . . .	55
Changing the printer separation pad . . . . .	56
Printing an engine test page . . . . .	58

## 7 Service and support

Availability . . . . .	60
Hardware service. . . . .	60
Extended warranty. . . . .	60
Guidelines for repacking the printer. . . . .	60
Service information form . . . . .	61
Hewlett-Packard Support. . . . .	62
Customer Support and product repair assistance (U.S. and Canada) . . . . .	62
European Customer Support Center. . . . .	63
In-country/region support numbers . . . . .	64
Online services . . . . .	66
Obtaining software utilities and electronic information . . . . .	67
Hewlett-Packard direct ordering for accessories or supplies . . . . .	67
Hewlett-Packard Support Assistant compact disc. . . . .	67
Hewlett-Packard service information. . . . .	67
HP SupportPack . . . . .	67
Worldwide sales and service offices . . . . .	68

## Appendix A Printer specifications

Specifications	70
FCC compliance	72
Environmental Product Stewardship Program	73
Protecting the environment	73
Material safety data sheet	74
Regulatory statements	75
Declaration of Conformity	75
Laser safety statement	76
Canadian DOC regulations	76
Korean EMI statement	76
Japanese EMI statement	76
Laser statement for Finland	77

## Appendix B Media specifications

Printer media specifications	80
Supported media sizes (printer)	80
Guidelines for using media	81
Paper	81
Labels	82
Transparencies	82
Envelopes	82
Card stock and heavy media	83

## Appendix C Warranty and licensing

Hewlett-Packard software license agreement	86
Hewlett-Packard limited warranty statement	87
Limited warranty for toner cartridge life	89

## Appendix D Accessories and ordering information

### Appendix E Installing shared printers

Installing a shared printer on Windows 98 and Millennium	94
Installing a shared printer on Windows 2000	95
Installing a shared printer on Windows XP	96

## Index



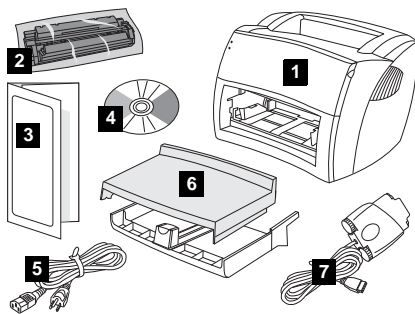


# 1 Getting started

This chapter provides the following instructions for installing the software and setting up the printer:

- [Review the package contents](#)
- [Prepare the location](#)
- [Regulate the environment](#)
- [Install the printer software](#)
- [Prepare the toner cartridge](#)
- [Install the toner cartridge](#)
- [Load the input tray](#)
- [Connect the USB cable](#)
- [Connect the power cord](#)
- [Troubleshooting the printer](#)
- [Installation is complete](#)

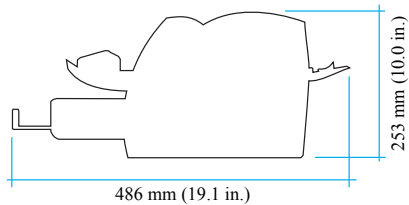
## Review the package contents



Make sure that all of the parts are included.

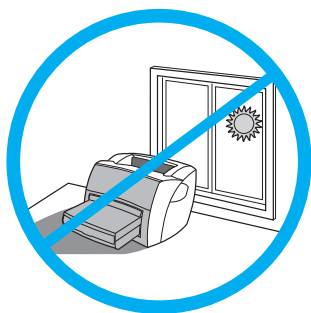
- 1 printer
- 2 toner cartridge (in protective bag)
- 3 Getting Started Guide
- 4 software and electronic user guide (on one CD-ROM)
- 5 power cord
- 6 input tray
- 7 USB cable with pod

## Prepare the location



Place the printer on a sturdy, level surface. Allow space for ventilation. Allow space behind the printer for output from the straight-through output door.

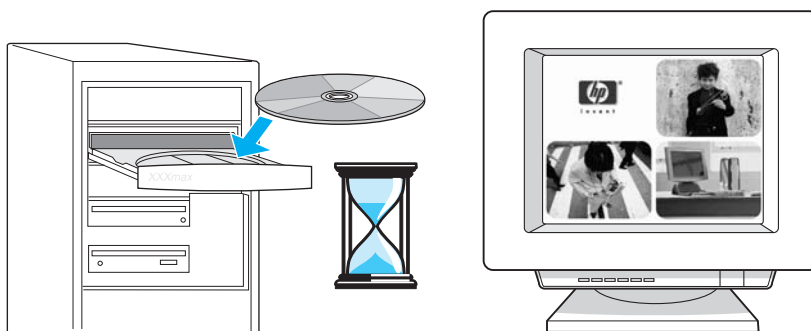
## Regulate the environment



Do not place the printer in direct sunlight. Make sure that the environment is free from abrupt temperature or humidity changes.

- Temperature – 50° to 91° F (10° to 32.5° C)
- Relative humidity – 20% to 80%

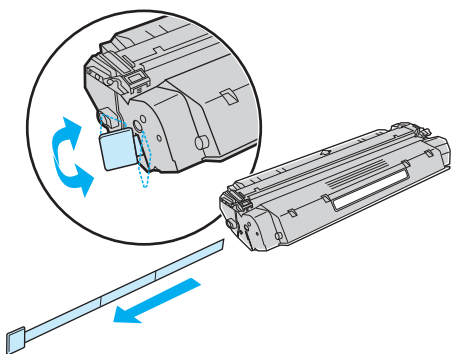
## Install the printer software



### To install the printer software from the CD

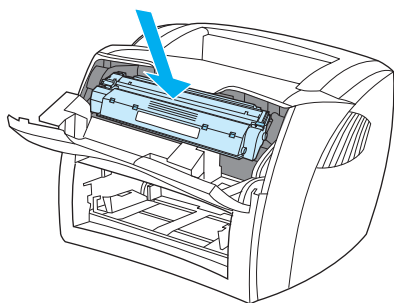
- 1 Select **Install** from the autorun screen. If autorun does not occur, in the Windows system tray, click **Start**, click **Run**, type **x:\setup** (where **x** is the letter of your CD-ROM drive), and click **OK**.
- 2 Follow the instructions on the screen.

## Prepare the toner cartridge



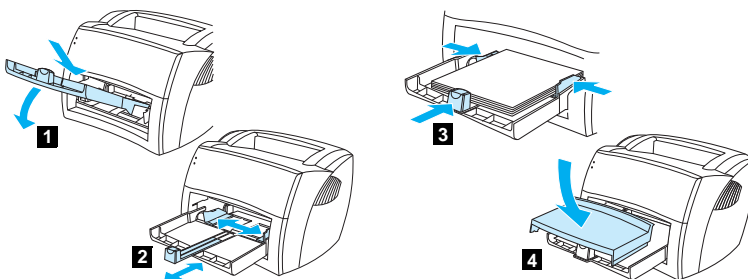
Remove the toner cartridge from the plastic bag. To remove the mylar tape, break the tab on the left and pull the tape completely out.

## Install the toner cartridge



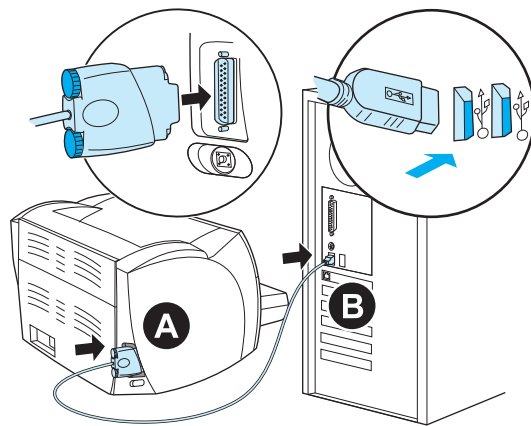
Insert the toner cartridge into the printer, making sure that the toner cartridge is in position.

## Load the input tray



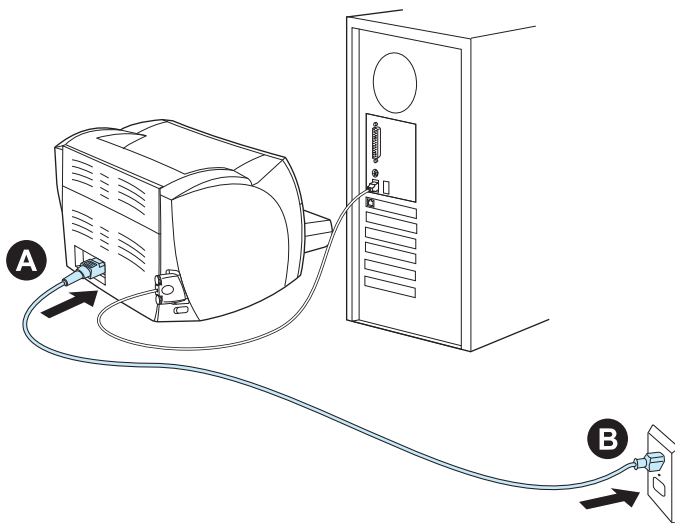
- 1 Slide the input tray in and down at an angle until it fits securely in the printer.
- 2 Slide the media guides out and back to accommodate the media.
- 3 Place the media in the input tray. Slide the media guides until they are flush with the media.
- 4 Install the input tray cover.

## Connect the USB cable



Plug the pod on the USB cable into the printer (A). Plug the USB cable into the PC (B).

## Connect the power cord



Plug the power cord into the printer (A). Plug the power cord into the power receptacle (B).

## Troubleshooting the printer

- 
- 

If the top status light is on, the printer is ready to print.

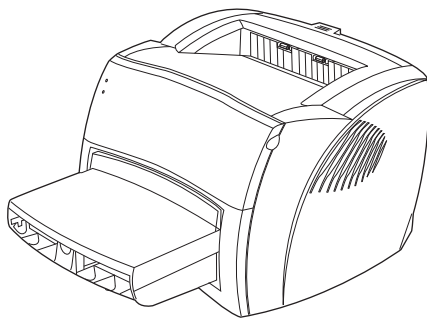
- 
- 

If no status lights are on, check the power cord and the USB cable connections.

### CAUTION

Before you connect the cable to the printer, always unplug the printer. Otherwise, the printer might be damaged.

## Installation is complete



**Congratulations!** Your HP LaserJet 1000 Series Printer is ready to use. If you had any problems, see [Troubleshooting the printer](#) or go to HP's support Web site at <http://www.hp.com/support/lj1000>.

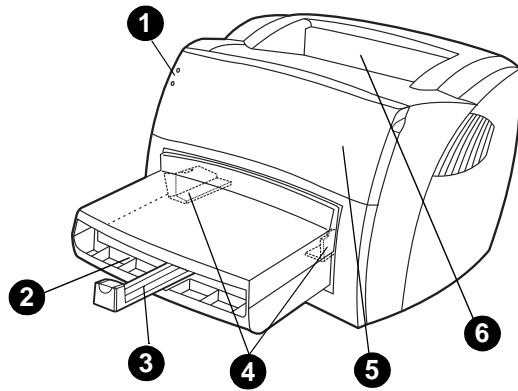
# 2 Getting to know the printer

This chapter provides information on the following topics:

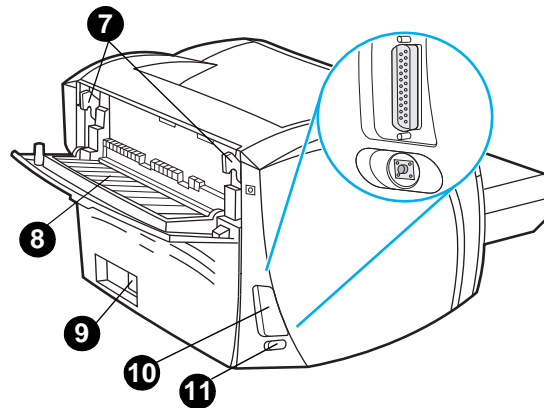
- [Identifying the printer's components](#)
- [Turning the power off](#)
- [Understanding voltage conversions](#)

## Identifying the printer's components

1. status lights
2. input tray
3. long media support for the input tray
4. side media guides for the input tray
5. toner door
6. output bin



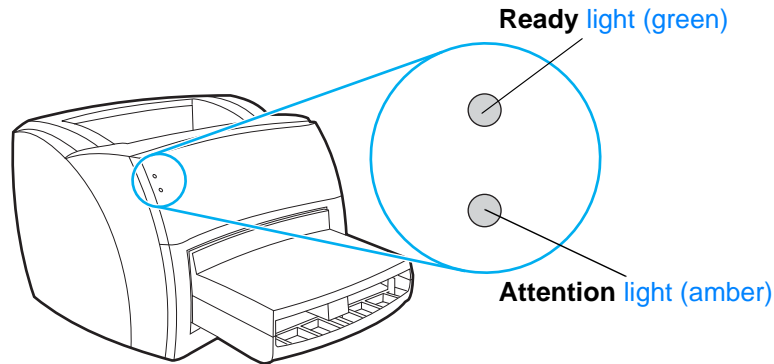
7. media jam release levers
8. straight-through output door
9. power receptacle
10. port for the USB cable pod
11. engine test button





## Status lights

The status lights produce patterns that identify your printer's status.



- **Ready light:** Indicates that the printer is ready to print or the printer is processing data.
- **Attention light:** Indicates that the input tray is empty, the toner door is open, the toner cartridge is missing, or another type of error occurred.

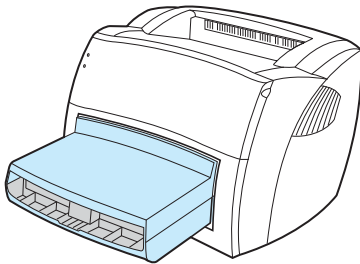
---

### Note

See [Status light patterns](#) for a description of the light patterns.

## Printer input tray

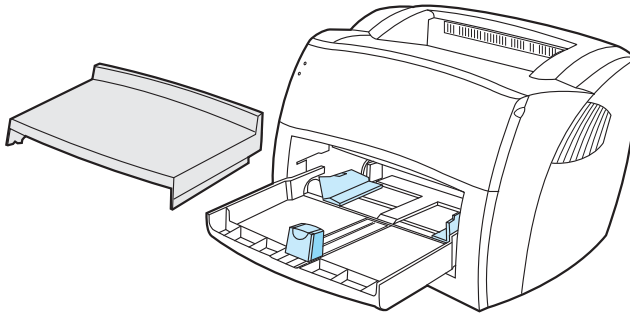
The enclosed input tray, located in front of the printer, holds up to 250 sheets of 20 lb (75 g/m<sup>2</sup>) paper, multiple envelopes, or other media.



See [Media specifications](#) for more information about media types.

## Printer media guides

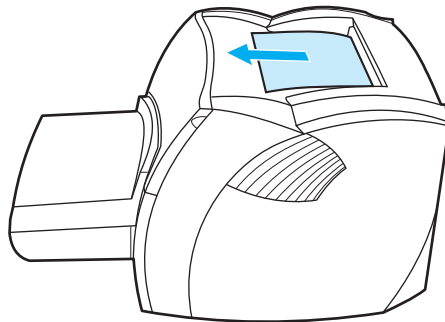
The input tray has a long media support and side media guides. Media guides ensure that the media is correctly fed into the printer and that the print is not skewed (crooked on the media). When loading media, adjust the media guides to match the width and length of the media that you are using.



## Printer output paths

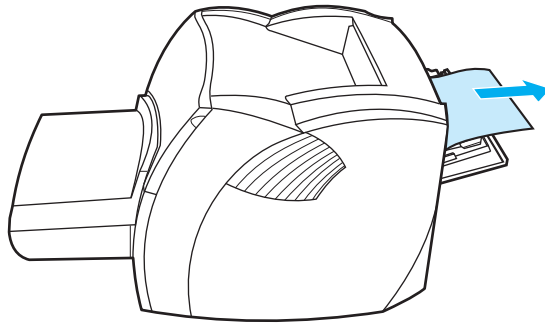
### Output bin

The output bin is located on the top of the printer. Printed media is collected here in the correct sequence when the straight-through output door is closed. Use the output bin when printing normal and large, collated documents.



## Straight-through output path

The straight-through output path is useful when you are printing envelopes, transparencies, heavy media, or any media that tends to curl when printed. Printed media exits in reverse order when the straight-through output door is open.



---

### Note

Printed media does not stack when you use the straight-through output path. The media drops to the surface below unless you remove each sheet as it exits the printer.

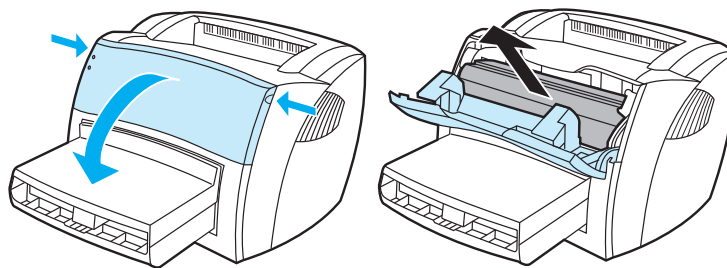
## Toner door

The toner door is located on the front of the printer. You must open the toner door to access the toner cartridge, clear jams, and clean the printer. To open the toner door, firmly grasp the left and right sides and pull the toner door toward you.

---

### Note

You will feel some resistance when you open the toner door. Opening the toner door conveniently lifts the toner cartridge for easy removal.

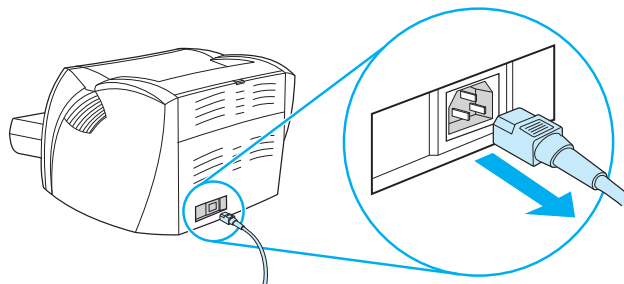


## Turning the power off

You must unplug the printer to turn the power off.

### **WARNING!**

To ensure your safety when working inside the printer for any reason, unplug the printer.



## Understanding voltage conversions

Because of the different specifications, Hewlett-Packard does not offer a voltage conversion or support the voltage conversion of the U.S. version of the HP LaserJet family of printers for foreign use. If you plan on using the equipment outside of the United States, Hewlett-Packard advises you to purchase the products in the country or region where you will use them.

### **CAUTION**

Check your printer's voltage requirement before you plug it in. If you plug a printer that requires 110-127 volts of power into a 220-240 voltage outlet, it will damage the printer.

# 3 Media

This chapter provides information on the following topics:

- [Choosing paper and other media](#)
- [Optimizing print quality for media types](#)
- [Loading media into the input tray](#)
- [Printing transparencies and labels](#)
- [Printing envelopes](#)
- [Printing letterhead and preprinted forms](#)
- [Printing custom-sized media and card stock](#)

## Choosing paper and other media

HP LaserJet printers produce excellent print quality documents. You can print on a variety of media, such as paper (including up to 100% recycled fiber content paper), envelopes, labels, transparencies, and custom-sized media. The following are the supported media sizes:

- **Minimum:** 76 by 127 mm (3 by 5 in.)
- **Maximum:** 216 by 356 mm (8.5 by 14 in.)

Properties such as weight, grain, and moisture content are important factors that affect printer performance and quality. To achieve the best possible print quality, only use high-quality media designed for laser printers. See [Printer media specifications](#) for detailed paper and media specifications.

---

**Note** Always test a sample of the media before you purchase large quantities. Your media supplier should understand the requirements specified in the *Guidelines for Paper and Other Print Media* (HP part number 5963-7863). See [Printer media specifications](#) for more information.

---

## Optimizing print quality for media types

The temperature of the printer's engine fuser affects the quality of your printed documents. Different types of media require different engine fuser temperatures to optimize the print quality. You can specify the type of media that you are using to print in the printer driver. This changes the engine fuser to the temperature that is appropriate for that media.

### To change the media type in the printer driver

- 1 Access the printer properties. See [Printer properties \(driver\)](#) for instructions.
- 2 Click the **Paper** tab.
- 3 Select the media type from the **Optimize for** drop-down list.
- 4 Click **OK**.

---

**Note** Printing speeds are automatically reduced when printing special-sized media.

---

## Loading media into the input tray

The input tray holds up to 250 pages of 20 lb paper or fewer pages of heavier media (25 mm or less stack). Load media with the top forward and the side to be printed facing up. To prevent jams and skewing, always adjust the side media guides and long media support.

---

### CAUTION

If you try to print on media that is wrinkled, folded, or damaged in any way, a jam might occur. See [Printer media specifications](#) for more information.

---

### Note

When you add new media, make sure that you remove all of the media from the input tray and straighten the stack of new media. This helps prevent multiple sheets of media from feeding through the printer at one time, reducing media jams.

### Specific types of media

- **Transparencies and labels:** Load transparencies and labels with the top forward and the side to be printed facing up. See [Printing transparencies and labels](#) for more information.
- **Envelopes:** Load envelopes with the narrow, stamp side forward and the side to be printed facing up. See [Printing envelopes](#) for more information.
- **Letterhead and preprinted forms:** Load letterhead and preprinted forms with the top forward and the side to be printed facing up. See [Printing letterhead and preprinted forms](#) for more information.
- **Custom-sized media and card stock:** Load custom-sized media and card stock with the narrow side forward and the side to be printed facing up. See [Printing custom-sized media and card stock](#) for more information.

## Printing transparencies and labels

Only use transparencies and labels that are recommended for laser printers, such as HP transparency film and HP LaserJet labels. See [Printer media specifications](#) for more information.

### CAUTION

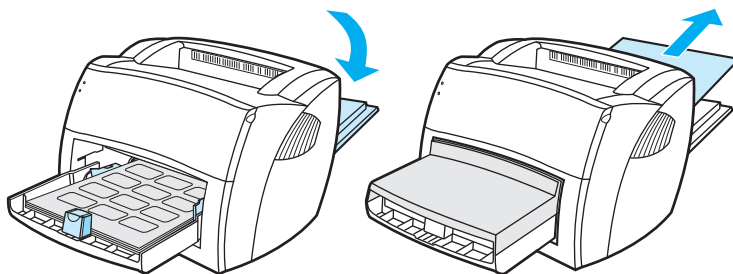
Inspect the media to make sure that it is not wrinkled or curled and that it does not have any torn edges or missing labels.

### CAUTION

Do not use labels that have exposed backing. Labels can peel off of sheets that have spaces between the labels, causing serious jams.

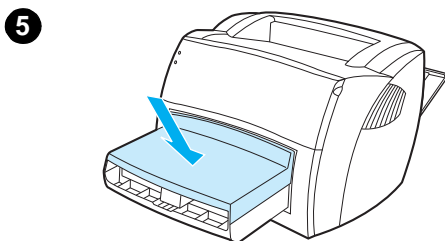
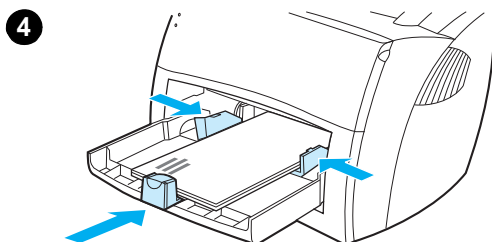
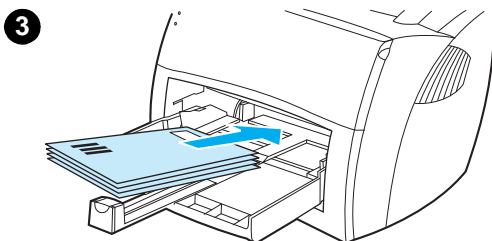
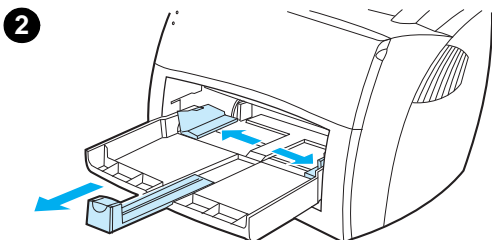
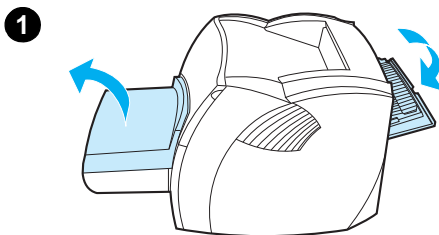
### To print transparencies or labels

- 1 Open the straight-through output door.
- 2 Load the media in the input tray. Make sure that the top of the media is forward and the side to be printed (rough side) is facing up.
- 3 Adjust the media guides.
- 4 Access the printer properties. See [Printer properties \(driver\)](#) for instructions. Click the **Paper** tab, select **Transparency** or **Labels** from the **Optimize for** drop-down list, and click **OK**.
- 5 Print the document. To prevent the media from sticking together, remove the media from the back of the printer as it prints and place the printed pages on a flat surface.





# Printing envelopes



Only use envelopes that are recommended for laser printers. See [Printer media specifications](#) for more information.

- 1 To prevent the envelopes from curling as they print, open the straight-through output door.
- 2 Before loading the envelopes, slide the media guides outward so that they are slightly wider than the envelopes.
- 3 Place the envelopes with the stamp end forward and the side to be printed facing up.

---

### Note

If the envelopes have a flap on the short edge, feed that edge into the printer first.

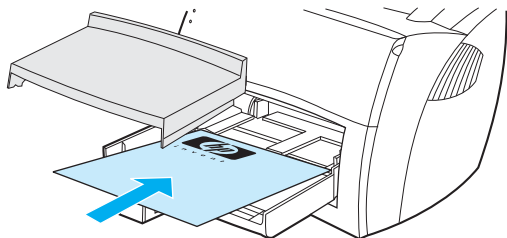
---

- 4 Adjust the media guides to the length and width of the envelopes. Access the printer properties. See [Printer properties \(driver\)](#) for instructions. Click the **Paper** tab, select **Envelope** from the **Optimize for** drop-down list, and click **OK**.
- 5 Replace the input tray cover.

## Printing letterhead and preprinted forms

### To print letterhead or preprinted forms

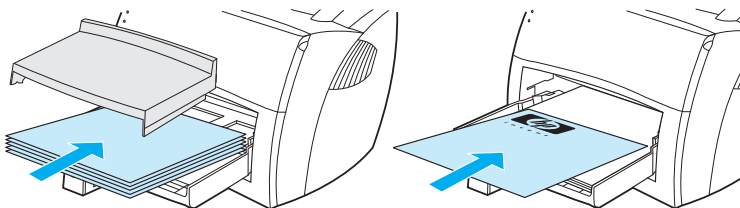
- 1 Load the media with the top forward and the side to be printed facing up. Adjust the media guides to fit the width of the media.
- 2 Access the printer properties. See [Printer properties \(driver\)](#) for instructions. Click the **Paper** tab, select the appropriate media from the **Optimize for** drop-down list, and click **OK**.
- 3 Print the document.



---

#### Note

To print a single-page cover letter on letterhead followed by a multiple-page document, load the standard media in the input tray. Place a sheet of letterhead on top of the standard media. The printer automatically prints the letterhead first.



## Printing custom-sized media and card stock

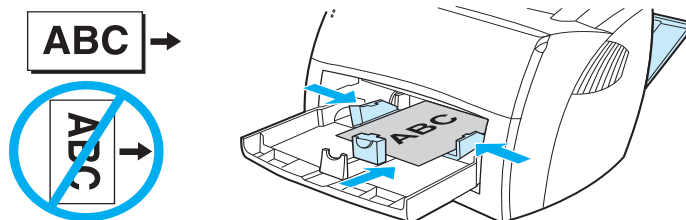
The HP LaserJet 1000 Series Printer can print on custom-sized media or card stock between 76 by 127 mm (3 by 5 in.) and 216 by 356 mm (8.5 by 14 in.).

### CAUTION

Make sure that the media is not stuck together before you load it.

### To print on custom-sized media or card stock

- 1 Open the straight-through output door.
- 2 Load the media with the narrow side forward and the side to be printed facing up. Adjust the media guides to fit the media.
- 3 Select the correct media size in the printer settings. (Software settings can override printer properties.)
- 4 Access the printer properties. See [Printer properties \(driver\)](#) for instructions. Click the **Paper** tab, select the appropriate media from the **Optimize for** drop-down list, and click **OK**.
- 5 Print the document.





# 4 Printing tasks

This chapter provides information on the following topics:

- [Accessing the printer properties \(driver\) and help](#)
- [Printing watermarks](#)
- [Printing multiple pages on a single sheet of media \(N-up printing\)](#)
- [Canceling a print job](#)
- [Understanding print quality settings](#)
- [Using EconoMode \(Save Toner\)](#)

# Accessing the printer properties (driver) and help

This section provides information on the following topics:

- [Printer properties \(driver\)](#)
- [Printer properties online help](#)

## Printer properties (driver)

Printer properties control the printer. You can change the default settings, such as media size and type, printing multiple pages on a single sheet of media (N-up printing), resolution, and watermarks. You can access the printer properties in the following ways:

- Through the software application that you are using to print. This only changes the settings for the current software application.
- Through the Windows® operating system. This changes the default settings for all future print jobs.

---

### Note

Because many software applications use a different method of accessing the printer properties, the following section describes the most common methods used in Windows 98, 2000, Millennium, and Windows XP.

### To only change the settings for the current software application

---

### Note

Although the steps can vary between software applications, this is the most common method.

- 1 From the **File** menu in the software application, click **Print**.
- 2 On the **Print** dialog, click **Properties**.
- 3 Change the settings, and click **OK**.

### To change the default settings for all future print jobs in Windows 98, 2000, and Millennium

- 1 In the Windows system tray, click **Start**, select **Settings**, and click **Printers**.
- 2 Right-click the HP LaserJet 1000 printer icon.
- 3 Click **Properties**.
- 4 Change the settings, and click **OK**.

---

### Note

In Windows 2000, many of these features are available from the **Printing Preferences** menu.

### To change the default settings for all future print jobs in Windows XP

- 1 In the Windows system tray, click **Start**, and click **Control Panel**.
- 2 Double-click **Printers and Other Hardware**.
- 3 Click **Printers and Faxes**.
- 4 Right-click the HP LaserJet 1000 printer icon.
- 5 Click **Properties**.
- 6 Change the settings, and click **OK**.

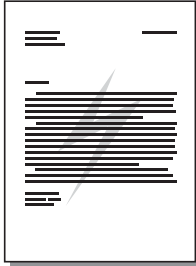
## Printer properties online help

The printer properties (driver) online help includes specific information about the functions in the printer properties. This online help guides you through the process of changing your printer's default settings.

To access the printer properties help system, open the printer driver, click the **Printer Properties** tab, and click **Help**.

## Printing watermarks

You can use the watermark option to print text “underneath” (in the background) the text of an existing document. For example, you might want to have large gray letters reading *Draft* or *Confidential* printed diagonally across the first page or all of the pages of a document.

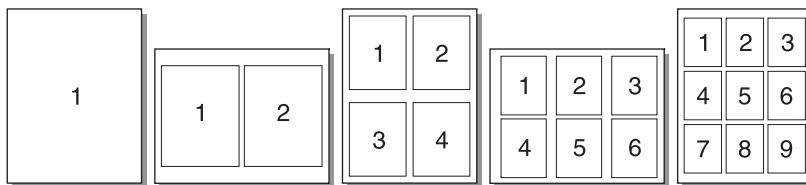


### To access the watermark feature

- 1 From your software application, access the printer properties. See [Printer properties \(driver\)](#) for instructions.
- 2 Click the **Effects** tab, and specify the type of watermark that you want to print on your document.
- 3 Click **OK**.

## Printing multiple pages on a single sheet of media (N-up printing)

You can select the number of pages that you want to print on a single sheet of media. If you choose to print more than one page per sheet, the pages appear smaller and are arranged on the sheet in the order that they would otherwise be printed. You can specify up to 9 pages per sheet of media.



### To access the multiple pages per sheet feature

- 1 From your software application, access the printer properties. See [Printer properties \(driver\)](#) for instructions.
- 2 Click the **Finishing** tab.
- 3 Specify the number of pages per sheet in the **Pages per Sheet** box.
- 4 To print borders around each page, select **Print Page Borders**.
- 5 To specify the order that you want the pages printed on the page, select the appropriate option from the **Page Order** drop-down list.
- 6 Click **OK**.



## Canceling a print job

You can cancel a print job from a software application or a print queue.

To stop the printer immediately, remove the remaining media from the printer. After the printer stops, use one of the following options:

- **Software application:** Typically, a dialog box appears briefly on your screen, allowing you to cancel the print job.
- **Windows print queue:** If a print job is waiting in a print queue (computer memory) or print spooler, you can delete the job from the **Printer** screen.

If the status lights continue to blink after you cancel a print job, the computer is still sending the job to the printer. Either delete the job from the print queue or wait until the computer finishes sending data. The printer will return to the Ready state.

## Understanding print quality settings

Print quality settings affect how light or dark the print is on the page and the style that the graphics are printed. You can also use the print quality settings to optimize the print quality for a specific media type. See [Optimizing print quality for media types](#) for more information.

You can change the settings in the printer properties to accommodate the types of jobs you are printing. The following are the print quality options:

- **Best Quality:** This option prints at 600 dpi and provides the best print quality. This is the default setting.
- **300 dpi:** This option prints at a slightly reduced resolution so that the job can print faster.
- **Custom:** You can use this option to specify your own custom print quality settings.
- **EconoMode (Save Toner):** This option prints using less toner. This option is useful when you are printing drafts.

### To change the print quality settings

- 1 Access the printer properties. See [Printer properties \(driver\)](#) for instructions.
- 2 Click the **Finishing** tab.
- 3 Select the **Print Quality** option.
- 4 To view and change the output and graphic settings for the option that you selected, click **Details**.

## Using EconoMode (Save Toner)

EconoMode is an excellent way to extend the life of your toner cartridge. EconoMode uses substantially less toner than normal printing. The printed image is much lighter, but it is adequate for printing drafts or proofs.

To enable EconoMode, access the printer properties. See [Printer properties \(driver\)](#) for instructions. Click the **Finishing** tab, select **EconoMode (Save Toner)**, and click **OK**.



# 5 Managing the toner cartridge

This chapter provides information on the following topics:

- [Using HP toner cartridges](#)
- [Storing toner cartridges](#)
- [Toner cartridge life expectancy](#)
- [Recycling toner cartridges](#)
- [Saving toner](#)
- [Redistributing toner](#)
- [Changing the toner cartridge](#)

## Using HP toner cartridges

### HP policy on non-HP toner cartridges

Hewlett-Packard Company cannot recommend the use of non-HP toner cartridges, either new, refilled, or remanufactured. Since they are not HP products, Hewlett-Packard cannot influence their design or control their quality. Service or repair that is required as a result of using non-HP toner cartridges will not be covered under the printer warranty.

---

**Note**

The warranty does not apply to defects resulting from software, interfacing, or parts not supplied by Hewlett-Packard.

## Storing toner cartridges

Do not remove the toner cartridge from its package until you are ready to use it. The shelf life of a toner cartridge in an unopened package is approximately 2.5 years. The shelf life of a toner cartridge in an opened package is approximately 6 months.

---

**CAUTION**

To prevent damage to the toner cartridge, do not expose it to light.

## Toner cartridge life expectancy

The life of the toner cartridge depends on the amount of toner that your print jobs require. When printing text at 5% coverage, the standard toner cartridge (C7115A) lasts an average of 2,500 pages. This assumes that you set the print density to 3 and disable EconoMode. (These are the default settings.)

## Recycling toner cartridges

To reduce landfill waste, Hewlett-Packard has adopted a recycling program for empty toner cartridges. A postage-paid shipping label is inside the new HP LaserJet toner cartridge box. Since 1990, the HP Printing Supplies Environmental Program has collected more than 25 million used HP LaserJet toner cartridges that otherwise might have been discarded in the world's landfills. To join this recycling effort, follow the instructions provided in the new toner cartridge box.

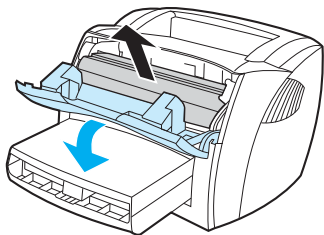
To install a new HP toner cartridge, see [Changing the toner cartridge](#) or follow the instructions included in the toner cartridge box. See the recycling information on the toner cartridge box and the [HP Printing Supplies Environmental Program](#) included in the toner cartridge box.

## Saving toner

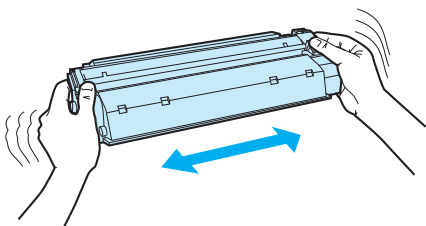
While in EconoMode, the printer uses less toner on each page. Selecting this option will extend the life of the toner cartridge and reduce your cost per page, but it will reduce print quality. See [Using EconoMode \(Save Toner\)](#) for more information.

## Redistributing toner

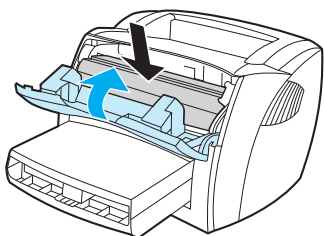
1



2



3



When toner is low, faded or light areas appear on the printed page. You might be able to temporarily improve print quality by redistributing the toner, which means that you might be able to finish the current print job before replacing the toner cartridge.

---

### Note

You will feel some resistance when you open the toner door. Opening the toner door conveniently lifts the toner cartridge for removal.

---

1 Open the toner door, and remove the toner cartridge from the printer.

---

### CAUTION

To prevent damage, do not expose the toner cartridge to light. Cover it with a sheet of media.

---

2 To redistribute the toner, gently shake the toner cartridge from side to side.

---

### CAUTION

If toner gets on your clothing, wipe the toner off with a dry cloth and wash the clothing in cold water. *Hot water will permanently set the toner into the fabric.*

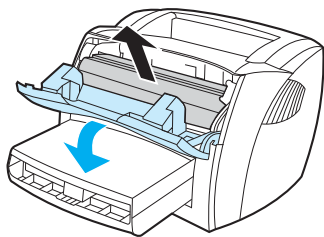
---

3 Reinsert the toner cartridge into the printer, and close the toner door.

If the print is still light, install a new toner cartridge. See [Changing the toner cartridge](#) for instructions.

# Changing the toner cartridge

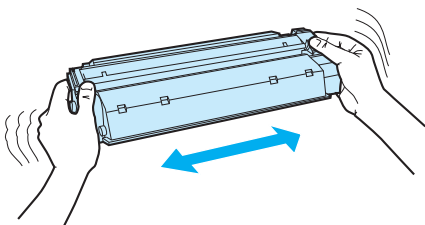
1



## Note

You will feel some resistance when you open the toner door. Opening the toner door conveniently lifts the toner cartridge for removal.

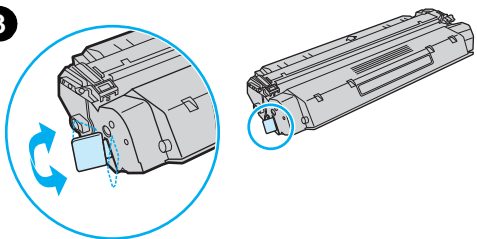
2



## CAUTION

To prevent damage, do not expose the toner cartridge to light. Cover it with a piece of media.

3

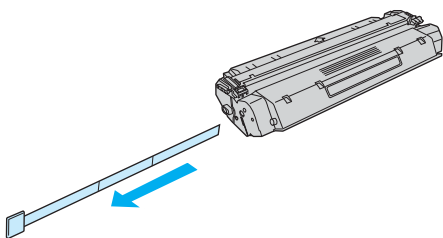


2 Remove the new toner cartridge from the packaging, and gently shake it from side to side to distribute the toner evenly inside the cartridge.

3 Bend the tab on the left side of the cartridge to break it loose.

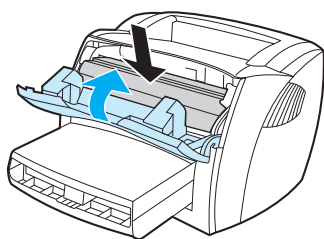
4 Pull the tab until all of the tape is removed from the cartridge. Put the tab in the toner cartridge box to return for recycling.

4



5 Insert the toner cartridge in the printer, making sure that the toner cartridge is in position. Close the toner door.

5



## CAUTION

If toner gets on your clothing, wipe the toner off with a dry cloth and wash the clothing in cold water. *Hot water will permanently set the toner into the fabric.*

# 6 Troubleshooting the printer

This chapter provides information on the following topics:

- [Finding the solution](#)
- [Improving print quality](#)
- [Cleaning the printer](#)
- [Clearing printer media jams](#)
- [Changing the pickup roller](#)
- [Cleaning the pickup roller](#)
- [Changing the printer separation pad](#)
- [Printing an engine test page](#)

---

**Note**

---

See Hewlett-Packard's Web site for software and printer driver updates, frequently asked questions, and additional troubleshooting information. See [Online services](#) for the appropriate Web address.

## Finding the solution

You can use this section to find the solution to common printer problems.

### Pages did not print

- **Status light patterns:** What status light pattern is displayed on the printer? See [Status light patterns](#) for more information.
- **Error messages on screen:** Is there a message on the screen? See [Error messages on the screen](#) for more information.
- **Media handling:** Is media being pulled into the printer incorrectly? Are there media jams? See [Media handling problems](#) for more information.

### Pages printed, but there was a problem

- **The print quality was poor:** See [Improving print quality](#) for more information.
- **The printed pages do not always appear the same as on the screen (print preview):** See [Printed page is different than what appeared on screen](#) for more information.
- **The printer settings were inappropriate for the media:** See [Media handling problems](#) for more information.




### Software is installed, but pages did not print

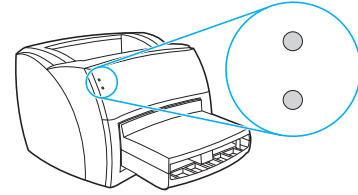
Is the print driver icon available? Is the printer in Ready mode? Can you select the printer in the **Print** dialog? See [Printer software problems](#) for more information.














# Status light patterns

## Status light legend

-  Symbol for "light off"
-  Symbol for "light on"
-  Symbol for "light blinking"



## Status light patterns

Status lights	Condition of the printer	Action
 	<p><b>Ready</b> The printer is ready to print.</p>	No action is necessary.
 	<p><b>Processing</b> The printer is receiving or processing data.</p>	Wait for the job to print.
	<p><b>Cleaning Mode/Engine test</b> A cleaning page or engine test page is printing.</p>	<p>Wait until the cleaning page is finished printing and the printer is in Ready mode. This could take up to 2 minutes.</p> <p>Wait until the engine test page is finished printing and the printer is in Ready mode.</p>
 	<p><b>Out of memory</b> The printer is out of memory.</p>	<p>The page you are printing might be too complex for the printer's memory capacity. Try lowering the resolution. See <a href="#">Understanding print quality settings</a> for more information.</p>
 	<p><b>Door open, media out, no toner cartridge, media jam, or media jam levers are down</b> The printer is in an error state that requires operator intervention or help.</p>	<p>Check the following:</p> <ul style="list-style-type: none"> <li>● The toner door is completely closed.</li> <li>● Media is loaded. See <a href="#">Loading media into the input tray</a> for instructions.</li> <li>● The toner cartridge is correctly installed in the printer. See <a href="#">Changing the toner cartridge</a> for instructions.</li> <li>● There is no media jam. See <a href="#">Clearing printer media jams</a> for instructions.</li> <li>● The media jam levers are in the upright position.</li> </ul>
 	<p><b>Printer initialization</b> A printer initialization is taking place.</p>	No action is necessary.

## Status light patterns (continued)

Status lights	Condition of the printer	Action
<ul style="list-style-type: none"><li>●</li><li>●</li></ul>	<p><b>Fatal error</b> Both lights are on.</p>	<ul style="list-style-type: none"><li>● Unplug the printer for 5 minutes, and then plug it back in.</li><li>● If the printer still has an error, contact HP Support. See <a href="#">Service and support</a>.</li></ul>
<ul style="list-style-type: none"><li>○</li><li>○</li></ul>	<p><b>USB cable is not connected or there is no power</b> Both lights are off.</p>	<ul style="list-style-type: none"><li>● Make sure that there is power.</li><li>● Unplug both ends of the power cord, and plug them back in.</li><li>● Unplug the power cord, disconnect both ends of the USB cable, reconnect both ends of the USB cable, and plug the power cord back in.</li></ul> <p><b>CAUTION</b> Before you connect the cable to the printer, always unplug the printer. Otherwise, the printer might be damaged.</p>

# Error messages on the screen

## Error messages on the screen

Error message	Solution
Printer not responding	<p>Check the following:</p> <ul style="list-style-type: none"><li>● The Ready light is on.</li><li>● The power cord and USB cable are correctly connected.</li></ul> <p><b>CAUTION</b> Before you connect the cable to the printer, always unplug the printer. Otherwise, the printer might be damaged.</p>
Cannot access port (in use by another application)	<p>Try the following:</p> <ul style="list-style-type: none"><li>● Reboot the computer.</li><li>● Make sure that you are only running one software application at a time.</li></ul>
Illegal operation/General protection fault/Spool 32 error	<p>A problem with your computer system resources (memory or hard disk) occurred in Windows. To clear this error, restart your computer.</p> <p>To help prevent this error from occurring in the future, use some or all of the following recommendations:</p> <ul style="list-style-type: none"><li>● Run fewer applications at the same time. Close applications that you are not using instead of minimizing them. Programs such as screen savers, virus checkers, status software, fax/answering software, and menu programs use the resources that you might need to print.</li><li>● Avoid memory-intensive tasks such as sending a fax or running a video clip while printing.</li><li>● Delete all temp (file_name.tmp) files from the Temp subdirectories, such as C:\Windows\Temp.</li><li>● Print at a lower resolution.</li></ul>

# Media handling problems

## Media handling problems

Problem	Solution
Media jam	<ul style="list-style-type: none"><li>● See <a href="#">Clearing printer media jams</a> for more information.</li><li>● Make sure that you are printing with media that meets specifications. See <a href="#">Printer media specifications</a> for more information.</li><li>● Make sure that you are printing with media that is not wrinkled, folded, or damaged.</li><li>● Make sure that the printer is clean. See <a href="#">Cleaning the printer media path</a> for more information.</li><li>● If you are printing to the straight-through output path, close and open the door again to make sure that the media jam release levers are closed.</li></ul>
Print is skewed (crooked)	<ul style="list-style-type: none"><li>● See <a href="#">Page skew</a> for more information.</li><li>● Adjust the media guides to the width and length of the media that you are using and try reprinting. See <a href="#">Printer media guides</a> or <a href="#">Loading media into the input tray</a> for more information.</li></ul>
More than one sheet of media feeds through the printer at one time	<ul style="list-style-type: none"><li>● The input tray might be too full. See <a href="#">Loading media into the input tray</a> for more information.</li><li>● Make sure that the media is not wrinkled, folded, or damaged.</li><li>● The printer separation pad might be worn. See <a href="#">Changing the printer separation pad</a> for more information.</li></ul>
Printer does not pull media from the input tray	The pickup roller might be dirty or damaged. See <a href="#">Cleaning the pickup roller</a> or <a href="#">Changing the pickup roller</a> for instructions.
Printer curled the media	<ul style="list-style-type: none"><li>● See <a href="#">Curl or wave</a> for more information.</li><li>● Open the straight-through output door to print straight through. See <a href="#">Printer output paths</a> or <a href="#">Media</a> for more information.</li></ul>
The printed media does not exit to the correct path	Open or close the straight-through output door to reflect the output path that you want to use. See <a href="#">Printer output paths</a> for more information.
Print job is extremely slow	<p>The maximum speed of the printer is 10 pages per minute. Your print job might be very complex. Try the following:</p> <ul style="list-style-type: none"><li>● Reduce the complexity of your document (for example, reduce the number of multiple graphics).</li><li>● Access the printer properties in the printer driver. See <a href="#">Printer properties (driver)</a> for instructions. Click the <b>Paper</b> tab, select <b>Plain Paper</b> from the <b>Optimize for</b> drop-down list, and click <b>OK</b>.</li></ul> <p><b>Note</b> This may cause toner to fuse improperly if you are using heavy media.</p> <ul style="list-style-type: none"><li>● Narrow media or heavy media will slow printing. Use normal media.</li><li>● Print speed is based on PC processor speed, the amount of memory, and the amount of hard disk space available on your PC. Try increasing these components.</li></ul>

# Printed page is different than what appeared on screen

## Printed page problems

---

Problem	Solution
Garbled, incorrect, or incomplete text	<p>The USB cable might be loose or defective. Try the following:</p> <ul style="list-style-type: none"><li>● Try printing a job that you know works.</li><li>● If possible, attach the USB cable and printer to another computer, and try printing a job that you know works.</li><li>● Unplug the power cord, disconnect the USB cable at both ends, reconnect the USB cable at both ends, and plug the power cord back in.</li></ul> <p><b>CAUTION</b> Before you connect the cable to the printer, always unplug the printer. Otherwise, the printer might be damaged.</p> <p>The wrong printer driver might have been selected when the software was installed. Make sure that the HP LaserJet 1000 is selected in the printer properties.</p> <p>There might be a problem with your software application. Try printing from another software application.</p>
Missing graphics or text, or blank pages	<ul style="list-style-type: none"><li>● Make sure that your file does not contain blank pages.</li><li>● The sealing tape might still be in the toner cartridge. Remove the toner cartridge, and pull out the sealing tape. Reinstall the toner cartridge. See <a href="#">Changing the toner cartridge</a> for instructions.</li><li>● The graphic settings in the printer properties might not be correct for the type of job that you are printing. Try a different graphic setting in the printer properties. See <a href="#">Printer properties (driver)</a> for more information.</li></ul>
Page format is different than on another printer	<p>If you used an older or different printer driver (printer software) to create the document or the printer properties settings in the software are different, the page format might change when you try to print using your new printer driver or settings. To help eliminate this problem, change the resolution, media size, font settings, and other settings. See <a href="#">Printer properties (driver)</a> for more information.</p>
Graphics quality	<p>The graphic settings might be unsuitable for your print job. Check the graphic settings, such as resolution, in the printer properties and adjust them as necessary. See <a href="#">Printer properties (driver)</a> for more information.</p>

---

# Printer software problems

## Printer software problems

---

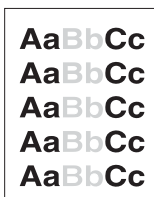
Problem	Solution
<p>A printer driver for the HP LaserJet 1000 printer is not visible in the <b>Printer</b> folder.</p>	<ul style="list-style-type: none"><li>● Reinstall the printer software. In the Windows system tray, click <b>Start</b>, select <b>Programs</b>, and select <b>HP LaserJet 1000</b>, and click <b>Uninstall</b>. Unplug the power cord from the printer. Install the printer software from the CD-ROM. Plug the power cord back into the printer.</li></ul> <p><b>Note</b> Close any applications that are running. To close an application that has an icon in the system tray, right-click the icon and select <b>Close</b> or <b>Disable</b>.</p> <ul style="list-style-type: none"><li>● Try plugging the USB cable into a different USB port on the PC.</li><li>● If you are trying to print to a shared printer, in the Windows system tray, click <b>Start</b>, select <b>Settings</b>, and select <b>Printers</b>. Double-click the <b>Add Printer</b> icon. Follow the instructions in the Add Printer Wizard. See <a href="#">Installing shared printers</a> for more information.</li></ul>
<p>An error message was displayed during the software installation</p>	<ul style="list-style-type: none"><li>● Reinstall the printer software. In the Windows system tray, click <b>Start</b>, select <b>Programs</b>, and select <b>HP LaserJet 1000</b>, and click <b>Uninstall</b>. Unplug the power cord from the printer. Install the printer software from the CD-ROM. Plug the power cord back into the printer.</li></ul> <p><b>Note</b> Close any applications that are running. To close an application that has an icon in the system tray, right-click the icon and select <b>Close</b> or <b>Disable</b>.</p> <ul style="list-style-type: none"><li>● Check the amount of free space on the drive where you are installing the printer software. If necessary, free up as much space as you can, and reinstall the printer software.</li><li>● If necessary, run the Disk Defragmenter, and reinstall the printer software.</li></ul>
<p>The printer is in Ready mode, but nothing prints</p>	<ul style="list-style-type: none"><li>● Reinstall the printer software. In the Windows system tray, click <b>Start</b>, select <b>Programs</b>, and select <b>HP LaserJet 1000</b>, and click <b>Uninstall</b>. Unplug the power cord from the printer. Install the printer software from the CD-ROM. Plug the power cord back into the printer.</li></ul> <p><b>Note</b> Close any applications that are running. To close an application that has an icon in the system tray, right-click the icon and select <b>Close</b> or <b>Disable</b>.</p> <ul style="list-style-type: none"><li>● Print an engine test page. See <a href="#">Printing an engine test page</a> for instructions.</li></ul>

---

# Improving print quality

This section provides information about identifying and correcting print defects.

## Light print or fade



- The toner supply is low. See [Managing the toner cartridge](#) for more information.
- The media might not meet Hewlett-Packard's media specifications (for example, the media is too moist or too rough). See [Printer media specifications](#) for more information.
- If the whole page is light, the print density adjustment is too light or EconoMode might be turned on. Access the printer properties. See [Printer properties \(driver\)](#) for instructions. Click the **Configure** tab, and adjust the **Print Density** setting. Click the **Finishing** tab, and clear the **EconoMode (Save Toner)** check box. See [Saving toner](#) for more information.

## Toner specks



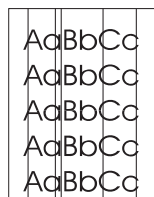
- The media might not meet Hewlett-Packard's media specifications (for example, the media is too moist or too rough). See [Printer media specifications](#) for more information.
- The printer might need to be cleaned. See [Cleaning the printer](#) or [Cleaning the printer media path](#) for instructions.

## Dropouts



- A single sheet of media might be defective. Try reprinting the job.
- The media's moisture content is uneven or the media has moist spots on its surface. Try printing with new media. See [Printer media specifications](#) for more information.
- The media lot is bad. The manufacturing processes can cause some areas to reject toner. Try a different type or brand of media.
- The toner cartridge might be defective. See [Managing the toner cartridge](#) for more information.

## Vertical lines



- Make sure that the input tray cover is in place.
- The photosensitive drum inside the toner cartridge has probably been scratched. Install a new HP toner cartridge. See [Changing the toner cartridge](#) for instructions.

## Gray background

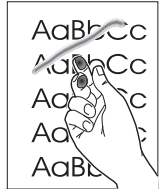


- Make sure that the input tray cover is in place.
- Access the printer properties. See [Printer properties \(driver\)](#) for instructions. Click the **Configure** tab, and decrease the **Print Density** setting. This decreases the amount of background shading.
- Change the media to a lighter basis weight. See [Printer media specifications](#) for more information.
- Check the printer's environment. Very dry (low humidity) conditions can increase the amount of background shading.
- Install a new HP toner cartridge. See [Changing the toner cartridge](#) for instructions.



### Toner smear

- If toner smears appear on the leading edge of the media, the media guides might be dirty. Wipe the media guides with a dry, lint-free cloth. See [Identifying the printer's components](#) or [Cleaning the printer](#) for more information.
- Check the media type and quality.
- Try installing a new HP toner cartridge. See [Changing the toner cartridge](#) for instructions.
- The fuser temperature might be too low. Access the printer properties. See [Printer properties \(driver\)](#) for instructions. Click the **Paper** tab, and make sure that you have selected the appropriate media from the **Optimize for** drop-down list.



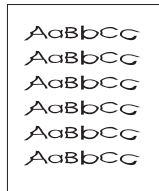
### Loose toner

- Clean the inside of the printer. See [Cleaning the printer](#) for instructions.
- Check the media type and quality. See [Printer media specifications](#) for more information.
- Try installing a new HP toner cartridge. See [Changing the toner cartridge](#) for instructions.
- Access the printer properties. See [Printer properties \(driver\)](#) for instructions. Click the **Paper** tab, and make sure that you have selected the appropriate media from the **Optimize for** drop-down list.
- Plug the printer directly into an AC outlet instead of into a power strip.



### Vertical repetitive defects

- The toner cartridge might be damaged. If a repetitive mark occurs at the same spot on the page, install a new HP toner cartridge. See [Changing the toner cartridge](#) for instructions.
- The internal parts might have toner on them. See [Cleaning the printer](#) for more information. If the defects occur on the back of the page, the problem will probably correct itself after a few more printed pages.
- Access the printer properties. See [Printer properties \(driver\)](#) for instructions. Click the **Paper** tab, and make sure that you have selected the appropriate media from the **Optimize for** drop-down list.



### Improperly formed characters

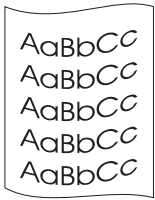
- If characters are improperly formed, producing hollow images, the media stock might be too slick. Try a different media. See [Printer media specifications](#) for more information.
- If characters are improperly formed, producing a wavy effect, the printer might need service. Print the Windows test page. If the characters are improperly formed, contact an HP-authorized dealer or service representative. See [Service and support](#) for more information.



### Page skew

- Make sure that the media is loaded correctly and the media guides are not too tight or too loose against the media stack. See [Loading media into the input tray](#) for more information.
- The input tray might be too full. See [Loading media into the input tray](#) for more information.
- Check the media type and quality. See [Printer media specifications](#) for more information.





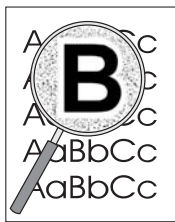
### Curl or wave

- Check the media type and quality. Both high temperature and humidity cause media to curl. See [Printer media specifications](#) for more information.
- The media might have been in the input tray too long. Turn over the stack of media in the tray. Also, try rotating the media 180° in the input tray.
- Open the straight-through output door and try printing straight through. See [Printer output paths](#) for more information.
- The fuser temperature might be too high. Access the printer properties. See [Printer properties \(driver\)](#) for instructions. Click the **Paper** tab, and make sure that you have selected the appropriate media from the **Optimize for** drop-down list.



### Wrinkles or creases

- Make sure that the media is loaded properly. See [Loading media into the input tray](#) for more information.
- Check the media type and quality. See [Printer media specifications](#) for more information.
- Open the straight-through output door and try printing straight through. See [Printer output paths](#) for more information.
- Turn over the stack of media in the tray. Also, try rotating the media 180° in the input tray.



### Toner scatter outline

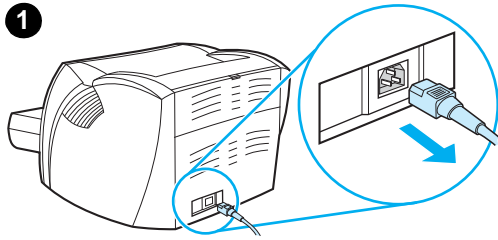
- Access the printer properties. See [Printer properties \(driver\)](#) for instructions. Click the **Configure** tab, and select **On** in **Transfer Setting**.
- If large amounts of toner have scattered around the characters, the media might be resisting the toner. (A small amount of toner scatter is normal for laser printing.) Try a different media type. See [Printer media specifications](#) for more information.
- Turn over the stack of media in the tray.
- Use media designed for laser printers. See [Printer media specifications](#) for more information.

## Cleaning the printer

During the printing process, media, toner, and dust particles can accumulate inside the printer. Over time, this buildup can cause print quality problems, such as toner specks or smearing. To correct and prevent these types of problems, you can clean the toner cartridge area and the printer media path. See the following sections for more information:

- [Cleaning the toner cartridge area](#)
- [Cleaning the printer media path](#)

## Cleaning the toner cartridge area



You do not need to clean the toner cartridge area often. However, cleaning this area can improve the quality of your printed sheets.

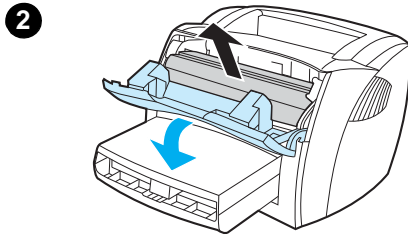
- 1 Unplug the power cord, and wait for the printer to cool.
- 2 Open the toner door, and remove the toner cartridge.

---

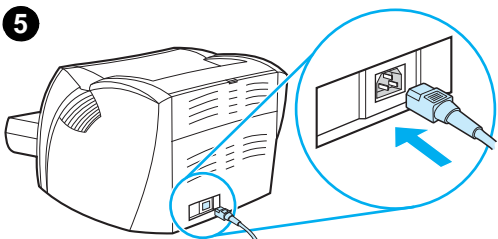
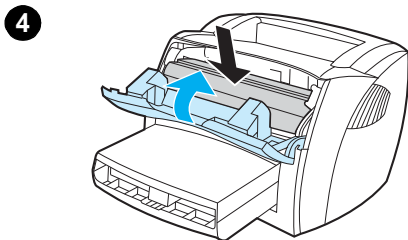
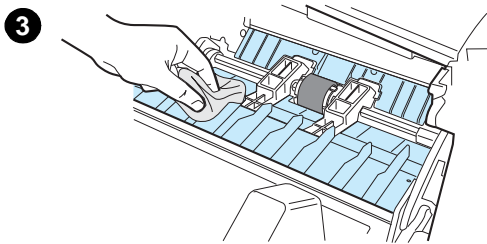
### CAUTION

To prevent damage, do not expose the toner cartridge to light. Cover the toner cartridge if necessary. Also, do not touch the black sponge transfer roller inside the printer. By doing so, you can damage the printer.

---



- 3 With a dry, lint-free cloth, wipe any residue from the media path area and the toner cartridge cavity.
- 4 Replace the toner cartridge, and close the toner door.
- 5 Plug the power cord back into the printer.



## Cleaning the printer media path

If you are experiencing toner specks or dots on the printouts, you can use the HP LaserJet cleaning utility to remove excess media and toner particles that can accumulate on the fuser assembly and rollers. Cleaning the media path might extend the life of the printer.



---

### Note

---

For best results use a sheet of transparency. If you do not have any transparencies, you can use copier grade media (18 to 24 lb. or 70 to 90 g/m<sup>2</sup>) with a smooth surface.

- 1 Make sure that the printer is idle and the Ready light is on.
- 2 Load the media in the input tray.
- 3 Access the printer properties. See [Printer properties \(driver\)](#) for instructions. Click the **Configure** tab, and click **Start** in **Cleaning Page**.

The cleaning process takes approximately 2 minutes.

## Clearing printer media jams

Occasionally, media becomes jammed during a print job. Some of the causes include the following:

- The input tray is loaded improperly or it is too full. See [Loading media into the input tray](#) for more information.
- The media does not meet HP specifications. See [Printer media specifications](#) for more information.

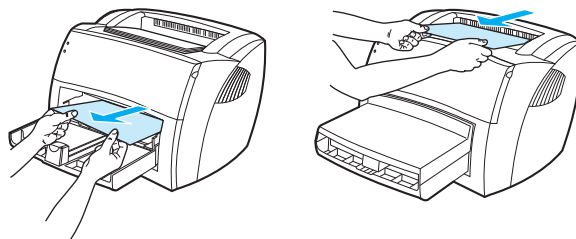
---

### Note

When you add new media, always remove all of the media from the input tray and straighten the stack of new media. This helps prevent multiple sheets of media from feeding through the printer at one time, reducing media jams.

You are notified of a media jam by an error in the software and the printer status lights. See [Status light patterns](#) for more information.

### Typical media jam locations



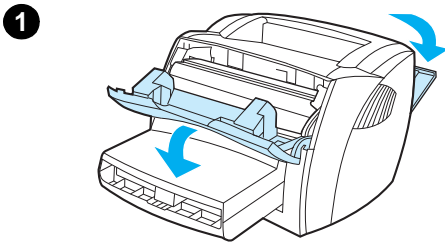
- **Toner cartridge area:** See [Removing a jammed page](#) for instructions.
- **Input tray area:** If the page is still sticking out of the input tray, gently try to remove it from the input tray without tearing the page. If you feel resistance, see [Removing a jammed page](#) for instructions.
- **Output paths:** If the page is sticking out of the output bin, gently try to remove it without tearing the page. If you feel resistance, see [Removing a jammed page](#) for instructions.

---

### Note

There might be loose toner in the printer after a media jam. This toner clears up after a few sheets print.

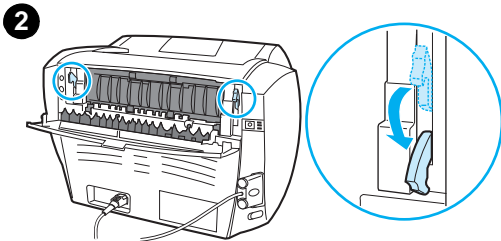
## Removing a jammed page



### CAUTION

Media jams might result in loose toner on the page. If toner gets on your clothing, wipe the toner off with a dry cloth and wash the clothing in cold water. *Hot water will permanently set the toner into the fabric.*

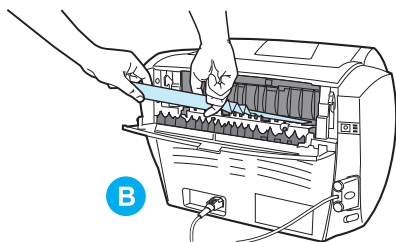
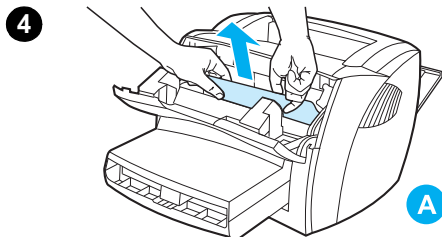
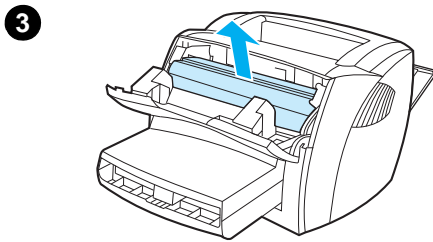
- 1 Open the toner door and the straight-through output door.
- 2 Rotate the media jam release levers downward.



### CAUTION

To prevent damage to the toner cartridge, do not expose it to light.

- 3 Remove the toner cartridge, and place it aside.
- 4 With both hands, grasp the side of the media that is most visible (this includes the middle), and carefully pull it free from the printer. Make sure that you check for jams in the toner cartridge area (A) and the straight-through output path (B).
- 5 When you have removed the jammed media, replace the toner cartridge, and close the toner door and the straight-through output door.



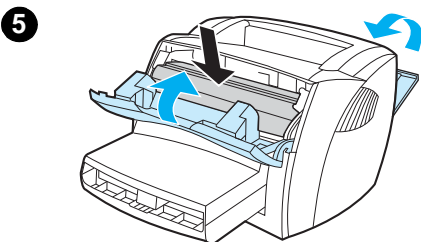
### Note

The media jam release levers automatically close when you close the straight-through output door.

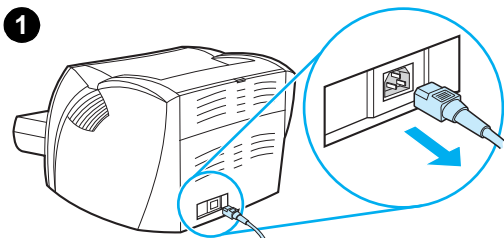
After clearing a media jam, you might need to unplug the printer and plug it back in.

### Note

When you add new media, remove all of the media from the input tray and straighten the stack of new media.



# Changing the pickup roller



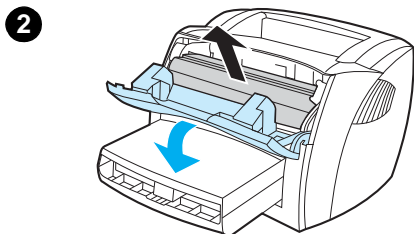
If the printer regularly mispicks (no media feeds through or more than one sheet feeds through), you might need to change or clean the pickup roller. See [Accessories and ordering information](#) to order a new pickup roller.

---

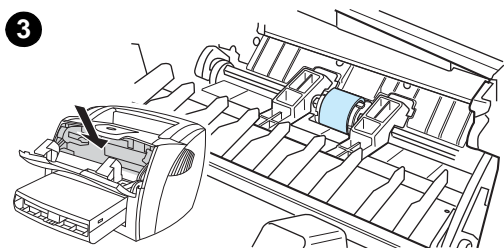
## CAUTION

Failure to complete this procedure might damage the printer.

---



- 1 Unplug the power cord from the printer, and allow the printer to cool.
- 2 Open the toner door, and remove the toner cartridge.



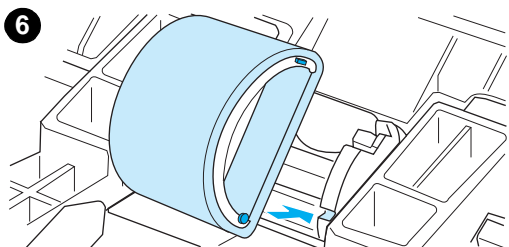
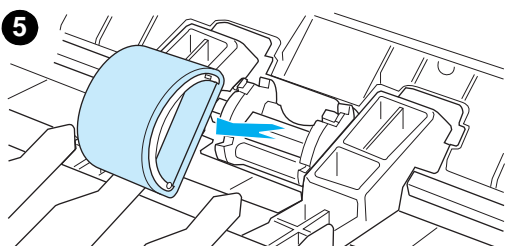
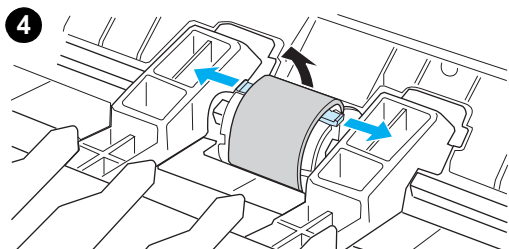
- 3 Find the pickup roller.
  - 4 Release the small, white tabs on either side of the pickup roller, and rotate the pickup roller toward the front.
  - 5 Gently pull the pickup roller up and out.
  - 6 Position the new or cleaned part in the slot of the previous pickup roller. See [Cleaning the pickup roller](#) for instructions.
- 

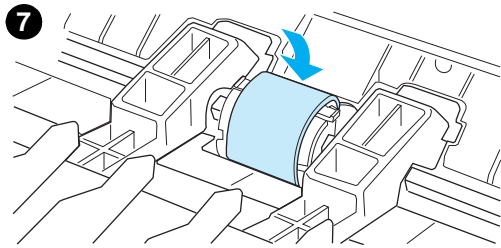
## Note

Circular and rectangular pegs on each side prevent you from incorrectly positioning the pickup roller.

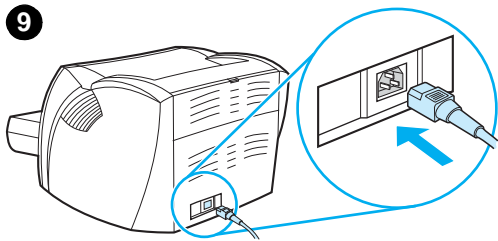
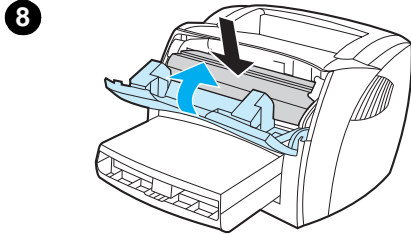
---

Continued on next page.





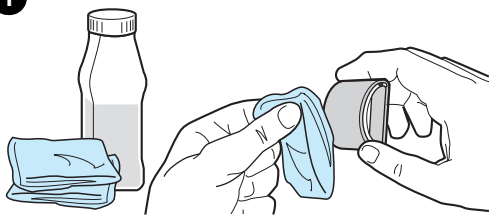
- 7 Rotate the top of the new pickup roller away from you until both sides snap into place.
- 8 Reinstall the toner cartridge, and close the toner door.
- 9 Plug the printer in to turn it back on.





## Cleaning the pickup roller

1



You can clean the pickup roller rather than replace it.

Remove the pickup roller as described in steps 1 through 5 of [Changing the pickup roller](#).

- 1 Dab a lint-free cloth in isopropyl alcohol, and scrub the roller.

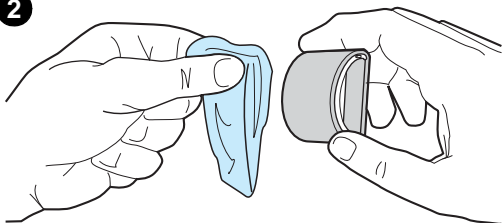
---

### WARNING!

Alcohol is flammable. Keep the alcohol and cloth away from an open flame. Before you close the printer and plug in the power cord, allow the alcohol to dry completely.

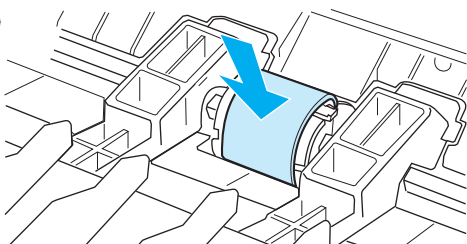
---

2



- 2 Using a dry, lint-free cloth, wipe the pickup roller to remove loosened dirt.
  - 3 Allow the pickup roller to dry completely before you reinstall it in the printer (see steps 6 through 9 of [Changing the pickup roller](#)).
- 

3



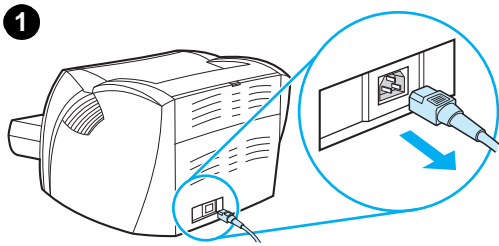
---

### Note

In certain areas of California, air pollution control regulations restrict the use of liquid Isopropyl Alcohol (IPA) as a cleaning agent. In those areas of California, please disregard the previous recommendations and use a dry, lint-free cloth. The cloth may be moistened with water if desired.

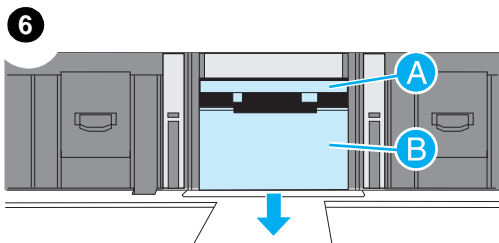
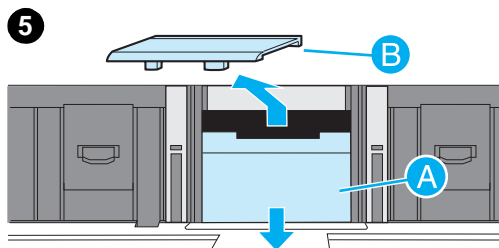
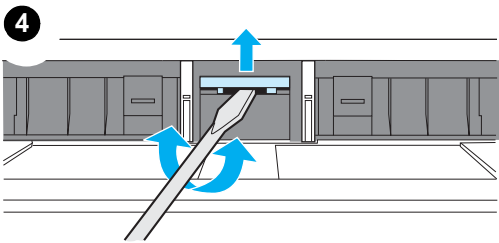
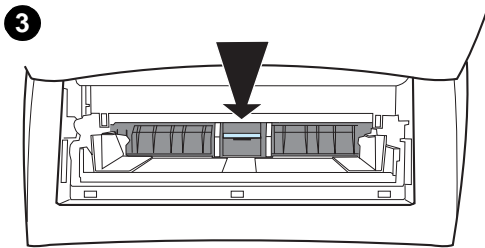
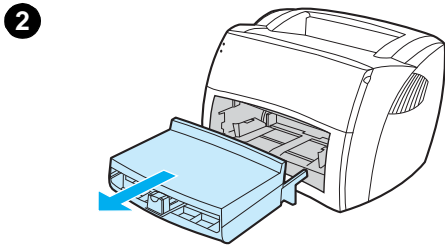
---

# Changing the printer separation pad



### Note

Before you change the separation pad, clean the pickup roller. See [Cleaning the pickup roller](#) for instructions.



If your input tray feeds more than one page at a time, you might need to change the printer separation pad. Recurring feed problems indicate that the printer separation pad is worn. See [Accessories and ordering information](#) to order a new printer separation pad.

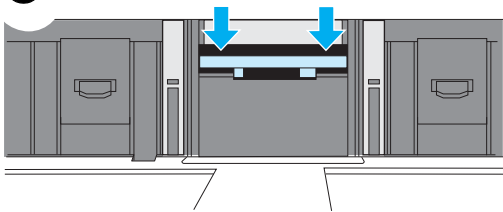
- 1 Unplug the power cord from the printer, and allow the printer to cool.
- 2 Remove the input tray.
- 3 Find the blue separation pad.
- 4 To pry the separation pad up from the spring-loaded base, insert a flat-edged screwdriver in the slot under the separation pad and twist until the tabs are free.
- 5 With one hand, reach in through the opening, and push the spring-loaded base down (A). With the other hand, pull the separation pad up (B).
- 6 With one hand, position the new separation pad in the slot of the previous separation pad (A). With the other hand, reach through the input tray opening, and push the spring-loaded base down (B).

### Note

The tab on the right is larger to help you position it correctly.

Continued on next page.

7



7 Snap both sides of the separation pad firmly into place.

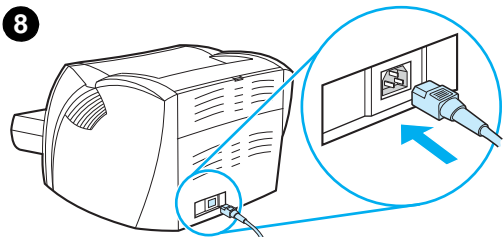
---

**CAUTION**

Make sure that the separation pad is straight and that there is no space between the separation pad and the spring-loaded base. If the separation pad is not straight or you see space on one side, remove the separation pad, make sure that the larger tab is on the right, reinsert the separation pad, and snap both sides into place.

---

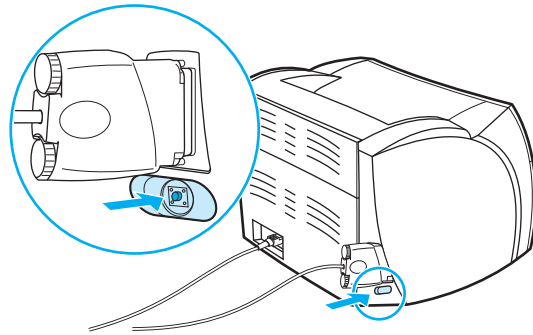
8



8 Reinsert the pickup roller, toner cartridge, and input tray. Plug the printer in to turn it back on.

## Printing an engine test page

The engine test shows you that the printer works. To print an engine test page, press the engine test button.



The engine test page prints as either a striped page or a solid black page. If the engine test page does not print, see [Status light patterns](#) for more information. If the engine test page prints as a white page, see [Missing graphics or text, or blank pages](#) for more information.

# 7 Service and support

This chapter provides information on the following topics:

- [Availability](#)
- [Hardware service](#)
- [Extended warranty](#)
- [Guidelines for repacking the printer](#)
- [Service information form](#)
- [Hewlett-Packard Support](#)
- [Worldwide sales and service offices](#)

## Availability

Hewlett-Packard provides a variety of service and support options around the world. The availability of these programs varies depending on your location.

## Hardware service

The warranty for the HP LaserJet 1000 Series Printer varies depending on the date and country or region of purchase.

For products that require service under the warranty, customers should call the customer support center in their country/region. See [in-country/region support numbers](#) for more information. Hewlett-Packard will choose one of the following methods to fulfill the warranty:

- Repair the product.
- Provide customer-replaceable parts for the customer to repair the unit.
- Replace the product with a remanufactured unit.
- Replace the product with a new or remanufactured product of equal or greater functionality.
- Refund the purchase price.
- Require that the customer return the unit to an authorized service provider.

## Extended warranty

HP SupportPack provides coverage for the HP product and all HP-supplied internal components. The HP SupportPack can provide Express Exchange or onsite service. The customer must purchase HP SupportPack within 90 days of the HP product purchase. For more support information, go to the following HP Web site:

[http://www.hp.com/peripherals2/care\\_netlj/index.html](http://www.hp.com/peripherals2/care_netlj/index.html)

or contact the Customer Care Service and Support group; see [Hewlett-Packard Support](#) for the appropriate phone numbers and information.

## Guidelines for repacking the printer

Use the following guidelines when repacking the printer:

- If possible, include print samples and 5 to 10 sheets of paper or other media that did not print correctly.
- Remove and keep any cables, trays, and optional accessories installed in the printer.
- Remove and keep the toner cartridge.

---

### CAUTION

---

To prevent damage to the toner cartridge, store the toner cartridge in its original packing material or store it so that it is not exposed to light.

- If possible, use the original shipping container and packing material. *Shipping damage as a result of inadequate packing is your responsibility.* If you have already disposed of the printer's packing material, contact a local mailing service for information on repacking the printer.
- Include a completed copy of the service information form. See [Service information form](#).
- Hewlett-Packard recommends that you insure the equipment for shipment.

# Service information form

## Service information form

---

Who is returning the equipment?

Date:

---

Person to contact:

Phone:

---

Alternate contact:

Phone:

---

Return shipping address:

Special shipping instructions:

---

What is being sent?

Model number:

Serial number:

---

Please attach any relevant printouts when returning equipment. **Do not** ship accessories that are not required to complete the repair (for example, media trays, manuals, and cleaning supplies)

### What needs to be done?

1. Describe the conditions of the failure (What was the failure? What were you doing when the failure occurred? What software were you running? Can you make the failure reoccur?)

---

2. If the failure is intermittent, how much time elapses between failures?

---

3. Is the unit connected to any of the following? (Please provide manufacturer and model numbers.)  
Personal Computer:                      Modem:                      Network:

---

4. Additional comments:

---

# Hewlett-Packard Support

Thank you for your purchase. Along with your product, you receive a variety of support services from Hewlett-Packard and our support partners that are designed to give you the results you need, quickly and professionally.

Please have the model number, serial number, date of purchase, and description of the problem ready for your HP Support representative.

The following support information is available:

- [Customer Support and product repair assistance \(U.S. and Canada\)](#)
- [European Customer Support Center](#)
- [In-country/region support numbers](#)
- [Online services](#)
- [Obtaining software utilities and electronic information](#)
- [Hewlett-Packard direct ordering for accessories or supplies](#)
- [Hewlett-Packard Support Assistant compact disc](#)
- [Hewlett-Packard service information](#)
- [HP SupportPack](#)

## Customer Support and product repair assistance (U.S. and Canada)

During the warranty period, you can call 1-208-323-2551 Monday through Friday from 6 am to 6 pm (Mountain Time) free of charge. However, your standard long-distance phone charges still apply. Have your system nearby and your serial number ready when calling.

Post-warranty telephone assistance is available to answer your product questions.

Call 1-900-555-1500 (\$2.50\* per minute, maximum charge of \$25.00 per call, U.S. only) or call 1-800-999-1148 (\$25\* per call, Visa or MasterCard, U.S. and Canada) Monday through Friday from 6 am to 6 pm (Mountain Time).

*\* Prices subject to change.*



# European Customer Support Center

## language and in-country options available

Open Monday through Friday 8:30-18:00 Central European Time (CET)

In many European countries, HP provides toll-free telephone support service during the warranty period. However, some of the phone numbers listed below may not be toll-free. Please refer to Support Web Page <<<http://www.hp.com/cpso-support/guide/psd/cscemea.html>>> for any associated fees. By calling a telephone number listed below, you will be connected to a responsive team waiting to help you. If you require support after your warranty has expired, you can receive support for a fee through the same telephone number. The fee is charged on a per-incident basis. When calling Hewlett-Packard, have the following information ready: product name and serial number, date of purchase, and description of the problem.

<b>Danish</b>	Denmark:	(45) 3929-4099
<b>Dutch</b>	Belgium:	(32) (0) 2 626-8806
	Netherlands:	(31) (20) 606-8751
<b>English</b>	Ireland:	(353) (1) 662-5525
	U.K.:	(44) (171) 512-5202
	International:	(44) (171) 512-5202
<b>Finnish</b>	Finland:	(358) 0203-47288
<b>French</b>	France:	(33) (01) 43-62-3434
	Belgium:	(32) (0) 2 626-8807
	Switzerland:	(41) (84) 880-1111
<b>German</b>	Germany:	(49) (180) 525-8143
	Austria:	(43) (0) 0810 006-080
<b>Italian</b>	Italy:	(39) (2) 264-10350
<b>Norwegian</b>	Norway:	(47) 2211-6299
<b>Portuguese</b>	Portugal:	(351) 21 317-6333
<b>Spanish</b>	Spain:	(34) (90) 232-1123
<b>Swedish</b>	Sweden:	(46) (8) 619-2170

## In-country/region support numbers

If you require support after your warranty has expired, additional product repair services, or if your country/region is not listed below, see [Worldwide sales and service offices](#).

Argentina	(5411) 4778-8380
Austria	(43) (0) 0810 006-080
Australia	(61) (3) 8877-8000
Belgium (Dutch)	(32) (0) 2 626-8806
Belgium (French)	(32) (0) 2 626-8807
Brazil	(011) 829-6612
Bulgaria	359 2 960 19 40
Canada	(1) (800) 387-3867
Chile	800-360999
China	(86) (10) 6564-5959
Czech Republic	(42) (2) 61307310
Denmark	(45) 3929-4099
Finland	(358) 0203-47288
France	(33) (01) 43-62-3434
Germany	(49) (180) 525-8143
Greece	(30) (0) 619-6411
Hong Kong	(852) 300-28-555
Hungary	(365) (0) 1 382-1111
India	(91) (11) 682-6035
Indonesia	(62) (21) 350-3408
International (European English)	(44) (171) 512-5202
Ireland	(353) (1) 662-5525
Israel	(972) (9) 9 52 48 48
Italy	(39) (2) 264-10350
Japan	(81) (3) 3335-9800
Korea	(82) (2) 3270-0700
Korea (outside Seoul)	(080) 999-0700
Malaysia	(60) (3) 2695-2566
Malaysia (Penang)	1 300 88 00 28
Mexico	800 427-6684
Netherlands	(31) (20) 606-8751
New Zealand	(64) (9) 356-6640 or 0800 445-543 (toll free)
Norway	(47) 2211-6299
Philippines	(63) (2) 867-3551
Poland	(48) (22) 519-0600
Portugal	(351) 21 317-6333
Romania	40 1 315 44 42 or 01 3154442 (local)
Russia (Moscow)	(7) (095) 797-3520
Russia (St. Petersburg)	7-812 346 7997
Saudi Arabia	971 4 883 8454
Singapore	(65) 272-5300
South Africa (inside RSA)	086 000 1030

South Africa (outside RSA)	27-11 258 9301
Spain	(34) (90) 232-1123
Sweden	(46) (8) 619-2170
Switzerland	(41) (84) 880-1111
Taiwan	(886) (02) 2717-0055
Thailand	66 (2) 661-4000
Turkey	(90) (212) 221 6969
Ukraine	7 (380-44) 490-3520
United Arab Emirates	971-4-8838454
U.K.	(44) (171) 512-5202
U.S.A.	(208) 323-2551
Vietnam	84 (8) 823-4530

## Online services

For 24-hour access to information over your modem, we suggest the following services.

### World Wide Web URL

You can obtain printer drivers, updated HP printer software, and product and support information from the following sites:

in the U.S. [http://www.hp.com/support/lj1000\\_software](http://www.hp.com/support/lj1000_software)

in Europe <http://www2.hp.com>

You can obtain printer drivers from the following sites:

in Korea <http://www.hp.co.kr>

in Taiwan <http://www.hp.com.tw>

or the local driver Web site <http://www.dds.com.tw>

### America Online

America Online/Bertelsmann is available in the U.S., France, Germany, and U.K. Printer drivers, updated HP printer software, and support documentation to help answer your questions about which HP products are available. Use Keyword HP to start your tour or call 1-800-827-6364 and use preferred customer #1118 to subscribe. In Europe, call the following numbers:

Austria 0222 58 58 485

France ++353 1 704 90 00

Germany 0180 531 31 64

Switzerland 0848 80 10 11

United Kingdom 0800 279 1234

### CompuServe™

Printer drivers, updated HP printer software, and interactive sharing of technical information with other members are available on CompuServe's "HP User's forums" (GO HP), or call 1-800-524-3388 and ask for representative #51 to subscribe. (CompuServe is also available in the U.K., France, Belgium, Switzerland, Germany, and Austria.)

## Obtaining software utilities and electronic information

You can obtain printer drivers from the following locations.

### U.S. and Canada

**Phone:** (805) 257-5565  
**Mail:** Hewlett-Packard Co.  
P.O. Box 1754  
Greeley, CO 80632  
U.S.A.  
**Fax:** (805) 257-6866

### Asia-Pacific

For Hong Kong, Indonesia, Philippines, Malaysia, and Singapore, contact Fulfill Plus at (65) 740-4477. For Korea, call (82) (2) 3270-0700.

### Australia, New Zealand, and India

For Australia and New Zealand, call (61) (2) 565-6099. For India, call (91) (11) 682-6035.

### Europe

In the U.K., call (44) (142) 986-5511. For Ireland and outside of the U.K., call (44) (142) 986-5511.

## Hewlett-Packard direct ordering for accessories or supplies

In the U.S., call 1-800-538-8787. In Canada, call 1-800-387-3154.

## Hewlett-Packard Support Assistant compact disc

This support tool offers a comprehensive online information system designed to provide technical and product information about HP products. To subscribe to this quarterly service in the U.S. or Canada, call 1-800-457-1762. In Hong Kong, Indonesia, Malaysia, and Singapore, call Fulfill Plus at (65) 740-4477.

## Hewlett-Packard service information

To find an HP-Authorized Service Provider, call 1-800-243-9816 (U.S.) or 1-800-387-3867 (Canada).

## HP SupportPack

Call 1-800-835-4747 (U.S. only).

All other locations, contact your authorized dealer.

Or use our Web site:

[http://www.hp.com/peripherals2/care\\_netlj/index.html](http://www.hp.com/peripherals2/care_netlj/index.html)

## Worldwide sales and service offices

Before calling a Hewlett-Packard Sales and Service office, make sure that you contact the appropriate Customer Support Center number listed in [Hewlett-Packard Support](#). Do not return products to Hewlett-Packard Sales and Service offices.

To find the phone number for the Sales and Service office in your country or region, go to <http://www.hp.com>. From the main Web page, select your country or region, and follow the links to Contact HP and Office Locations.

# A Printer specifications

This chapter provides information on the following topics:

- [Specifications](#)
- [FCC compliance](#)
- [Environmental Product Stewardship Program](#)
- [Material safety data sheet](#)
- [Regulatory statements](#)

# Specifications

## Environmental specifications

---

Operating environment	Printer plugged into an AC outlet: <ul style="list-style-type: none"><li>● Temperature: 10° C to 32.5° C (50° F to 90.5° F)</li><li>● Humidity: 20% to 80% (no condensation)</li></ul> Install in a well-ventilated area.
-----------------------	---

---

Storage environment	Printer unplugged from an AC outlet: <ul style="list-style-type: none"><li>● Temperature: 0° C to 40° C (32° F to 104° F)</li><li>● Humidity: 10% to 80% (no condensation)</li></ul>
---------------------	--

---

## Acoustics

---

Noise level	During printing: 5.9 Bels (A) sound power level (per ISO 9296) (HP LaserJet 1000 tested at 10 ppm) <ul style="list-style-type: none"><li>● Sound pressure level (bystander position): 44 dB (A)</li><li>● Sound pressure level (operator position): 52 dB (A)</li></ul> During standby (power save): silent
-------------	---

---

## Electrical specifications

---

Power requirements	<ul style="list-style-type: none"><li>● 110-127Vac (+/-10%), 50/60 Hz (+/-2)</li></ul> <b>or</b> <ul style="list-style-type: none"><li>● 220-240Vac (+/-10%), 50/60 Hz (+/-2)</li></ul>
--------------------	---

---

Power consumption	<ul style="list-style-type: none"><li>● During printing: 210 watts (average)</li><li>● During standby (power save): 7 watts</li></ul>
-------------------	---

---

## Physical specifications

---

Dimensions	<ul style="list-style-type: none"><li>● Width: 415 mm (16.3 in.)</li><li>● Depth: 486 mm (19.1 in.)</li><li>● Height: 253 mm (10.0 in.)</li></ul>
------------	---

---

Weight (cartridge installed)	7.3 kg (16.1 lb)
------------------------------	------------------

---



## Printer capacities and ratings

---

Print speed	<ul style="list-style-type: none"><li>● 10 pages per minute</li><li>● First page out in less than 15 seconds</li></ul>
Input tray capacity	250 sheets of regular weight 20 lb (75 g/m <sup>2</sup> ) paper or up to 30 envelopes
Output bin capacity	125 sheets of regular weight 20 lb (75 g/m <sup>2</sup> ) paper
Minimum media size	76 x 127 mm (3 x 5 in.)
Maximum media size	216 x 356 mm (8.5 x 14 in.)
Media weight	<ul style="list-style-type: none"><li>● Output bin – 60 to 105 g/m<sup>2</sup> (16 to 28 lbs)</li><li>● Straight through media path – 60 to 163 g/m<sup>2</sup> (16 to 43 lbs)</li></ul>
Base memory	32 KB ROM and 1 MB of RAM
Print resolution	600 dots per inch (dpi)
Duty cycle	7,000 single-sided pages per month
PCL	Level 5e via DOS applications running in a Windows DOS shell

---

## Port availability

---

USB	1.1
-----	-----

---

## FCC compliance

This equipment has been tested and found to comply with the limits for a Class B digital device, pursuant to Part 15 of the FCC rules. These limits are designed to provide reasonable protection against harmful interference in a residential installation. This equipment generates, uses, and can radiate radio frequency energy. If it is not installed and used in accordance with the instructions, it may cause harmful interference to radio communications. However, there is no guarantee that interference will not occur in a particular installation. If this equipment does cause harmful interference to radio or television reception, which can be determined by turning the equipment off and on, the user is encouraged to try to correct the interference by one or more of the following measures:

- Reorient or relocate the receiving antenna.
- Increase separation between equipment and receiver.
- Connect equipment to an outlet on a circuit different from that to which the receiver is located.
- Consult your dealer or an experienced radio/TV technician.

---

### Note

Any changes or modifications to the printer that are not expressly approved by Hewlett-Packard could void the user's authority to operate this equipment.

---

Use of a shielded interface cable is required to comply with the Class B limits of Part 15 of FCC rules.

# Environmental Product Stewardship Program

## Protecting the environment

Hewlett-Packard Company is committed to providing quality products in an environmentally sound manner. This product has been designed with several attributes to minimize the impact on our environment.

### Ozone production

This product generates no appreciable ozone gas (O<sub>3</sub>).

### Energy consumption

Energy usage drops significantly while in PowerSave mode, which saves money without affecting the high performance of this product. This product qualifies for ENERGY STAR<sup>®</sup>, which is a voluntary program to encourage the development of energy-efficient office products.



ENERGY STAR<sup>®</sup> is a U.S. registered mark of the United States Environmental Protection Agency. As an ENERGY STAR<sup>®</sup> partner, Hewlett-Packard Company has determined that this product meets ENERGY STAR<sup>®</sup> Guidelines for energy efficiency. For more information, see <http://www.epa.gov/energystar/>.

### Toner consumption

EconoMode uses significantly less toner, which might extend the life of the toner cartridge.

### Media use

This product's N-up printing (multiple pages printed on one page) feature can reduce media usage and the resulting demands on natural resources.

### Plastics

Plastic parts over 25 grams are marked according to international standards that enhance the ability to identify plastics for recycling purposes at the end of the product's life.

### HP LaserJet printing supplies

In many countries, this product's printing supplies (such as toner cartridge, drum, and fuser) can be returned to Hewlett-Packard through the HP Printing Supplies Environmental Program. This easy-to-use, free take-back program is available in over 25 countries. Multi-lingual program information and instructions are included in every new HP Toner Cartridge and Consumables box.

## HP Printing Supplies Environmental Program

Since 1990, the HP Printing Supplies Environmental Program has collected more than 39 million used toner cartridges that otherwise might have been discarded in the world's landfills. The HP LaserJet toner cartridges go to a collection center and are shipped in bulk to our resource and recovery partners who disassemble the toner cartridge. Remaining materials are separated and converted into raw materials for use by other industries to make a variety of useful products.

### U.S. returns

For a more environmentally responsible return of used toner cartridges and consumables, Hewlett-Packard encourages you to use bulk returns. Simply bundle two or more toner cartridges together and use the single, prepaid, pre-addressed UPS label that is supplied in the package. For more information in the U.S., call 1-800-340-2445 or visit the HP LaserJet Supplies Web site at <http://www.ljsupplies.com/planetpartners/>.

### Non-U.S. recycling returns

Non-U.S. customers should call the local HP Sales and Service Office or visit the following Web site for more information regarding availability of the HP Printing Supplies Environmental Program.

[http://www.hp.com/ljsupplies/planet\\_recycle.html](http://www.hp.com/ljsupplies/planet_recycle.html)

### Media

This printer is suited for the use of recycled media when the media meets the guidelines in the *Guideline for Paper and Other Print Media*. See [Accessories and ordering information](#) for ordering information. This product is suitable for the use of recycled media according to DIN 19 309.

## Material safety data sheet

You can obtain Material Safety Data Sheets (MSDS) by contacting the HP LaserJet Supplies Web site at <http://www.hp.com/go/msds>.

## Declaration of Conformity

according to ISO/IEC Guide 22 and EN 45014

**Manufacturer's Name:** Hewlett-Packard Company  
**Manufacturer's Address:** 11311 Chinden Boulevard  
Boise, Idaho 83714-1021, USA

**declares that the product**

**Product Name:** HP LaserJet 1000 Series Printer  
**Model Number:** Q1342A  
**Product Options:** ALL

**conforms to the following Product Specifications:**

**Safety:** IEC 60950:1991+A1+A2+A3+A4 / EN 60950:1992+A1+A2+A3+A4+A11  
GB4943-1995  
IEC 60825-1:1993 +A1/ EN 60825-1:1994+A11 Class 1 Laser/LED Product  
**EMC:** CISPR 22:1997 / EN 55022:1998 Class B<sup>1</sup>  
EN 61000-3-2:1995  
EN 61000-3-3:1995  
EN 55024:1998  
FCC Title 47 CFR, Part 15 Class B<sup>2</sup> / ICES-002, Issue 2 / GB9254-88  
AS / NZS 3548:1995

**Supplementary Information:**

The product herewith complies with the requirements of the EMC Directive 89/336/EEC and the Low Voltage Directive 73/23/EEC, and carries the CE-Marking accordingly.

- 1) The product was tested in a typical configuration with Hewlett-Packard Personal Computer Systems.
- 2) This Device complies with Part 15 of the FCC Rules. Operation is subject to the following two conditions: (1) this device may not cause harmful interference, and (2) this device must accept any interference received, including interference that may cause undesired operation.

**Boise, Idaho USA  
February 1, 2001**

**For Regulatory Topics ONLY, contact:**

**Australia Contact:** Product Regulations Manager, Hewlett-Packard Australia Ltd.,  
31-41 Joseph Street, Blackburn, Victoria 3130, Australia

**European Contact:** Your Local Hewlett-Packard Sales and Service Office or  
Hewlett-Packard GmbH, Department HQ-TRE / Standards  
Europe, Herrenberger Straße 110-140, D-71034 Böblingen  
(FAX: +49-7031-14-3143)

**USA Contact:** Product Regulations Manager, Hewlett-Packard Company,  
PO Box 15, Mail Stop 160, Boise, Idaho 83707-0015  
(Phone: 208-396-6000)

## Laser safety statement

The Center for Devices and Radiological Health (CDRH) of the U.S. Food and Drug Administration has implemented regulations for laser products manufactured since August 1, 1976. Compliance is mandatory for products marketed in the United States. The printer is certified as a “Class 1” laser product under the U.S. Department of Health and Human Services (DHHS) Radiation Performance Standard according to the Radiation Control for Health and Safety Act of 1968.

Since radiation emitted inside the printer is completely confined within protective housings and external covers, the laser beam cannot escape during any phase of normal user operation.

### WARNING!

Using controls, making adjustments, or performing procedures other than those specified in this user guide could result in exposure to hazardous radiation.

## Canadian DOC regulations

Complies with Canadian EMC Class B requirements.

«Conforme à la classe B des normes canadiennes de compatibilité électromagnétiques. «CEM».»

## Korean EMI statement

사용자 안내문 (B급 기기)

이 기기는 비업무용으로 전자파장애검정을 받은 기기로서, 주거지역에서는 물론 모든 지역에서 사용할 수 있습니다.

## Japanese EMI statement

この装置は、情報処理装置等電波障害自主規制協議会（VCCI）の基準に基づくクラスB情報技術装置です。この装置は、家庭環境で使用することを目的としていますが、この装置がラジオやテレビジョン受信機に近接して使用されると、受信障害を引き起こすことがあります。  
取り扱い説明書に従って正しい取り扱いをして下さい。

# Laser statement for Finland

## LASERTURVALLISUUS

### LUOKAN 1 LASERLAITE

#### KLASS 1 LASER APPARAT

HP LaserJet 1000 -laserkirjoitin on käyttäjän kannalta turvallinen luokan 1 laserlaite. Normaalisissa käytössä kirjoittimen suojakotelointi estää lasersäteen pääsyn laitteen ulkopuolelle.

Laitteen turvallisuusluokka on määritetty standardin EN 60825-1 (1993) mukaisesti.

#### **VAROITUS!**

Laitteen käyttäminen muulla kuin käyttöohjeessa mainitulla tavalla saattaa altistaa käyttäjän turvallisuusluokan 1 ylittävälle näkymättömälle lasersäteilylle.

#### **VARNING!**

Om apparaten används på annat sätt än i bruksanvisning specificerats, kan användaren utsättas för osynlig laserstrålning, som överskrider gränsen för laserklass 1.

#### **HUOLTO**

HP LaserJet 1000 -kirjoittimen sisällä ei ole käyttäjän huollettavissa olevia kohteita. Laitteen saa avata ja huoltaa ainoastaan sen huoltamiseen koulutettu henkilö. Tällaiseksi huoltotoimenpiteeksi ei katsota väriainekasetin vaihtamista, paperiradan puhdistusta tai muita käyttäjän käsikirjassa lueteltuja, käyttäjän tehtäväksi tarkoitettuja ylläpitotoimia, jotka voidaan suorittaa ilman erikoistyökaluja.

#### **VARO!**

Mikäli kirjoittimen suojakotelo avataan, olet alttiina näkymättömälle lasersäteilylle laitteen ollessa toiminnassa. Älä katso säteeseen.

#### **VARNING!**

Om laserprinterns skyddshölje öppnas då apparaten är i funktion, utsättas användaren för osynlig laserstrålning. Betrakta ej strålen.

Tiedot laitteessa käytettävän laserdiodin säteilyominaisuuksista:

Aallonpituus 770-795 nm

Teho 5 mW

Luokan 3B laser





# B Media specifications

This chapter provides information on the following topics:

- [Printer media specifications](#)
- [Supported media sizes \(printer\)](#)
- [Guidelines for using media](#)

## Printer media specifications

HP LaserJet printers produce excellent print quality. The printer accepts a variety of media, such as cut-sheet paper (including recycled paper), envelopes, labels, transparencies, vellum, and custom-sized media. Properties such as weight, grain, and moisture content are important factors affecting printer performance and output quality.

The printer can use a variety of paper and other print media in accordance with the guidelines in this user guide. Media that does not meet these guidelines might cause the following problems:

- Poor print quality
- Increased media jams
- Premature wear on the printer, requiring repair

For best results, use only HP brand paper and print media. Hewlett-Packard Company cannot recommend the use of other brands. Because they are not HP products, Hewlett-Packard cannot influence or control their quality.

It is possible for media to meet all of the guidelines in this user guide and still not produce satisfactory results. This might be the result of improper handling, unacceptable temperature and humidity levels, or other variables over which Hewlett-Packard has no control.

Before you purchase a large quantity of media, make sure that it meets the requirements specified in this user guide and in *Guidelines for Paper and Other Print Media*. (See [Accessories and ordering information](#) for more information about ordering the guidelines.) Always test media before you purchase a large quantity.

---

### CAUTION

Using media that does not meet Hewlett-Packard's specifications might cause problems for the printer, requiring repair. This repair is not covered by the Hewlett-Packard warranty or service agreements.

## Supported media sizes (printer)

The following are the supported media sizes:

- **Minimum:** 76 x 127 mm (3 x 5 in.)
- **Maximum:** 216 x 356 mm (8.5 x 14 in.)

# Guidelines for using media

## Paper

For best results, use conventional 20 lb (75 g/m<sup>2</sup>) paper. Make sure that the paper is of good quality and free of cuts, nicks, tears, spots, loose particles, dust, wrinkles, voids, and curled or bent edges.

If you are unsure about what type of paper you are loading (such as bond or recycled), check the label on the package of paper.

Some paper causes print quality problems, jamming, or damage to the printer.

### Paper usage

Symptom	Problem with paper	Solution
Poor print quality or toner adhesion. Problems with feeding.	Too moist, too rough, too smooth, or embossed. Faulty paper lot.	Try another kind of paper: between 100-250 Sheffield and 4 to 6% moisture content.
Dropouts, jamming, or curling.	Stored improperly.	Store paper flat in its moisture-proof wrapping.
Increased gray background shading.	Might be too heavy.	Use a lighter weight paper.
Excessive curling. Problems with feeding.	Too moist, wrong grain direction, or short-grain construction.	Use long-grain paper. Print using the straight-through output path.
Jamming or damage to the printer.	Cutouts or perforations.	Do not use paper with cutouts or perforations.
Problems with feeding.	Ragged edges.	Use good quality paper.

**Note** Do not use letterhead that is printed with low-temperature inks, such as those used in some types of thermography.

Do not use raised letterhead.

The printer uses heat and pressure to fuse toner to the paper. Make sure that any colored paper or preprinted forms use inks that are compatible with the printer temperature (200° C or 392° F for 0.1 second).

## Labels

When selecting labels, consider the quality of the following components:

- **Adhesives:** The adhesive material should be stable at 200° C (392° F), the printer's maximum temperature.
- **Arrangement:** Only use labels that do not have exposed backing between them. Labels can peel off of sheets that have spaces between the labels, causing serious jams.
- **Curl:** Prior to printing, labels must lie flat with no more than 13 mm (0.5 in.) of curl in any direction.
- **Condition:** Do not use labels with wrinkles, bubbles, or other indications of separation.

## Transparencies

Transparencies must be able to withstand 200° C (392° F), the printer's maximum temperature.

## Envelopes

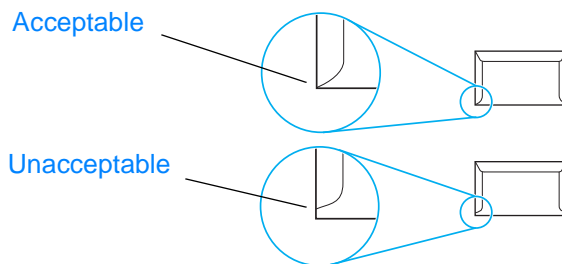
### Envelope construction

Envelope construction is critical. Envelope fold lines can vary considerably, not only between manufacturers, but also within a box from the same manufacturer. Successful printing on envelopes depends on the quality of the envelopes. When selecting envelopes, consider the following components:

- **Weight:** The weight of the envelope paper should not exceed 28 lb (105 g/m<sup>2</sup>), or jamming might result.
- **Construction:** Prior to printing, envelopes should lie flat with less than 6 mm (0.25 in.) curl and should not contain air. Envelopes that trap air may cause problems.
- **Condition:** Make sure that the envelopes are not wrinkled, nicked, or otherwise damaged.
- **Sizes:** From 90 x 160 mm (3.5 x 6.3 in.) to 178 x 254 mm (7 x 10 in.).

### Envelopes with double-side seams

An envelope with double-side-seam construction has vertical seams at both ends of the envelope rather than diagonal seams. This style might be more likely to wrinkle. Make sure that the seam extends all the way to the corner of the envelope as shown in the following illustration:



## Envelopes with adhesive strips or flaps

Envelopes with a peel-off adhesive strip or with more than one flap that folds over to seal must use adhesives compatible with the heat and pressure in the printer: 200° C (392° F). The extra flaps and strips might cause wrinkling, creasing, or jams.

## Envelope storage

Proper storage of envelopes contributes to good print quality. You should store envelopes flat. If air is trapped in an envelope, creating an air bubble, the envelope might wrinkle during printing.

## Card stock and heavy media

You can print many types of card stock from the input tray, including index cards and postcards. Some card stock performs better than others because its construction is better suited for feeding through a laser printer.

For optimum printer performance, do not use media that is heavier than 42 lb (157 g/m<sup>2</sup>). Media that is too heavy might cause misfeeds, stacking problems, media jams, poor toner fusing, poor print quality, or excessive mechanical wear.

---

### Note

You might be able to print on heavier media if you do not fill the input tray to capacity and if you use media with a smoothness rating of 100-180 Sheffield.

## Card stock construction

- **Smoothness:** 36 to 42 lb (135 to 157 g/m<sup>2</sup>) card stock should have a smoothness rating of 100-180 Sheffield. 16 to 36 lb (60 to 135 g/m<sup>2</sup>) card stock should have a smoothness rating of 100-250 Sheffield.
- **Construction:** Card stock should lie flat with less than 5 mm (0.2 in.) of curl.
- **Condition:** Make sure that the card stock is not wrinkled, nicked, or otherwise damaged.
- **Sizes:** Only use card stock within the following size ranges:
  - **Minimum:** 76 x 127 mm (3 x 5 in.)
  - **Maximum:** 216 x 356 mm (8.5 x 14.0 in.)

## Card stock guidelines

- If the card stock curls or jams, print using the straight-through output path.
- Set margins at least 2 mm (0.08 in.) away from the edges.



# C Warranty and licensing

This chapter provides information on the following topics:

- [Hewlett-Packard software license agreement](#)
- [Hewlett-Packard limited warranty statement](#)
- [Limited warranty for toner cartridge life](#)

# Hewlett-Packard software license agreement

ATTENTION: USE OF THE SOFTWARE IS SUBJECT TO THE HP SOFTWARE LICENSE TERMS SET FORTH BELOW. USING THE SOFTWARE INDICATES YOUR ACCEPTANCE OF THESE LICENSE TERMS.

## HP SOFTWARE LICENSE TERMS

The following License Terms govern your use of the accompanying Software unless you have a separate signed agreement with Hewlett-Packard.

License Grant. Hewlett-Packard grants you a license to use one copy of the Software. "Use" means storing, loading, installing, executing, or displaying the Software. You may not modify the Software or disable any licensing or control features of the Software. If the Software is licensed for "concurrent use," you may not allow more than the maximum number of authorized users to Use the Software concurrently.

Ownership. The Software is owned and copyrighted by Hewlett-Packard or its third-party suppliers. Your license confers no title to, or ownership in, the Software and is not a sale of any rights in the Software. Hewlett-Packard's third-party suppliers may protect their rights in the event of any violation of these License Terms.

Copies and Adaptations. You may only make copies or adaptations of the Software for archival purposes or when copying or adaptation is an essential step in the authorized Use of the Software. You must reproduce all copyright notices in the original Software on all copies or adaptations. You may not copy the Software onto any public network.

No Disassembly or Decryption. You may not disassemble or decompile the Software unless HP's prior written consent is obtained. In some jurisdictions, HP's consent may not be required for limited disassembly or decompilation. Upon request, you will provide HP with reasonably detailed information regarding any disassembly or decompilation. You may not decrypt the Software unless decryption is a necessary part of the operation of the Software.

Transfer. Your license will automatically terminate upon any transfer of the Software. Upon transfer, you must deliver the Software, including any copies and related documentation, to the transferee. The transferee must accept these License Terms as a condition to the transfer.

Termination. HP may terminate your license upon notice for failure to comply with any of these License Terms. Upon termination, you must immediately destroy the Software, together with all copies, adaptations, and merged portions in any form.

Export Requirements. You may not export or re-export the Software or any copy or adaptation in violation of any applicable laws or regulations.

U.S. Government Restricted Rights. The Software and any accompanying documentation have been developed entirely at private expense. They are delivered and licensed as "commercial computer software" as defined in DFARS 252.227-7013 (Oct 1988), DFARS 252.211-7015 (May 1991), or DFARS 252.227-7014 (Jun 1995), as a "commercial item" as defined in FAR 2.101(a) (Jun 1987), or as "Restricted computer software" as defined in FAR 52.227-19 (Jun 1987) (or any equivalent agency regulation or contract clause), whichever is applicable. You have only those rights provided for such Software and any accompanying documentation by the applicable DFARS or FAR clause or the HP standard software agreement for the product involved.



# Hewlett-Packard limited warranty statement

## DURATION OF WARRANTY:

One year from date of purchase.

The warranty for the HP LaserJet 1000 Series Printer varies depending on the date and country or region of purchase.

For products that require service under the warranty, customers should call the customer support center in their country/region. See [in-country/region support numbers](#) for more information.

Hewlett-packard will choose one of the following methods to fulfill the warranty:

- Repair the product.
- Provide customer-replaceable parts for the customer to repair the unit.
- Replace the product with a remanufactured unit.
- Replace the product with a new or remanufactured product of equal or greater functionality.
- Refund the purchase price.
- Require that the customer return the unit to an authorized service provider.

1. HP warrants to you, the end-user customer, that HP hardware, accessories, and supplies, will be free from defects in materials and workmanship after the date of purchase, for the period specified above. The customer is responsible for maintaining proof of date of purchase. If HP receives notice of such defects during the warranty period, HP will, at its option, either repair or replace products which prove to be defective. Any replacement products may be either new or like-new, provided that it has functionality at least equal to that of the product being replaced.
2. HP warrants to you that HP software will not fail to execute its programming instructions after the date of purchase, for the period specified above, due to defects in material and workmanship when properly installed and used. If HP receives notice of such defects during the warranty period, HP will replace software media which does not execute its programming instructions due to such defects.
3. HP does not warrant that the operation of HP products will be uninterrupted or error free. If HP is unable, within a reasonable time, to repair or replace any product to a condition as warranted, you will be entitled to a refund of the purchase price upon prompt return of the product.
4. HP products may contain remanufactured parts equivalent to a new in performance or may have been subject to incidental use.
5. Warranty does not apply to defects resulting from (a) improper or inadequate maintenance or calibration, (b) software, interfacing, parts or supplies not supplied by HP, (c) unauthorized modification or misuse, (d) operation outside of the published environmental specifications for the product, or (d) improper site preparation or maintenance.
6. **HP MAKES NO OTHER EXPRESS WARRANTY OR CONDITION WHETHER WRITTEN OR ORAL. TO THE EXTENT ALLOWED BY LOCAL LAW, ANY IMPLIED WARRANTY OR CONDITION OR MERCHANTABILITY, SATISFACTORY QUALITY, OR FITNESS FOR A PARTICULAR PURPOSE IS LIMITED TO THE DURATION OF THE EXPRESS WARRANTY SET FORTH ABOVE.** Some countries, states or provinces do not allow limitations on the duration of an implied warranty, so the above limitation or exclusion might not apply to you. This warranty gives you specific legal rights and you might also have other rights that vary from country to country, state to state, or province to province.

7. TO THE EXTENT ALLOWED BY LOCAL LAW, THE REMEDIES IN THIS WARRANTY STATEMENT ARE YOUR SOLE AND EXCLUSIVE REMEDIES. EXCEPT AS INDICATED ABOVE, IN NO EVENT WILL HP OR ITS SUPPLIERS BE LIABLE FOR LOSS OF DATA OR FOR DIRECT, SPECIAL, INCIDENTAL, CONSEQUENTIAL (INCLUDING LOST PROFIT OR DATA), OR OTHER DAMAGE, WHETHER BASED IN CONTRACT, TORT, OR OTHERWISE. Some countries, states or provinces do not allow the exclusion or limitation of incidental or consequential damages, so the above limitation or exclusion may not apply to you.

FOR CONSUMER TRANSACTIONS IN AUSTRALIA AND NEW ZEALAND; THE WARRANTY TERMS CONTAINED IN THIS STATEMENT, EXCEPT TO THE EXTENT LAWFULLY PERMITTED, DO NOT EXCLUDE, RESTRICT OR MODIFY AND ARE IN ADDITION TO THE MANDATORY STATUTORY RIGHTS APPLICABLE TO THE SALE OF THIS PRODUCT TO YOU.

## Limited warranty for toner cartridge life

---

### Note

The following warranty applies to the toner cartridge that came with this printer.

HP toner cartridges are warranted to be free from defects in materials and workmanship until the HP toner is depleted. The warranty covers any defects or malfunctions in a new HP toner cartridge.

#### **How long does the coverage last?**

The coverage lasts until the HP toner is depleted, at which time the warranty expires.

#### **How do I know when the HP toner is running out?**

The HP toner is depleted when faded or light type appears on the printed page.

#### **What will Hewlett-Packard do?**

Hewlett-Packard will, at its option, either replace products that prove to be defective or refund the purchase price. If possible, please attach a printout sample illustrating what the defective toner cartridge is printing.

#### **What does this warranty not cover?**

The warranty does not cover toner cartridges that have been refilled or are emptied, abused, misused, or tampered with in any way.

#### **How do I return the faulty toner cartridge?**

In the event that the toner cartridge proves to be defective, complete the Service Information Form and attach a print sample illustrating the defect. Return the form and toner cartridge to the place of purchase, where the toner cartridge will be replaced.

#### **How does State, Province, or Country Law apply?**

This limited warranty gives you specific legal rights, and you may also have other rights which vary from state to state, province to province, or country to country. This limited warranty is the sole warranty on the HP toner cartridge and supersedes any other warranty relating to this product.

**IN NO EVENT SHALL HEWLETT-PACKARD COMPANY BE LIABLE FOR ANY INCIDENTAL, CONSEQUENTIAL, SPECIAL, INDIRECT, PUNITIVE, OR EXEMPLARY DAMAGES OR LOST PROFITS FROM ANY BREACH OF THIS WARRANTY OR OTHERWISE.**

FOR CONSUMER TRANSACTIONS IN AUSTRALIA AND NEW ZEALAND; THE WARRANTY TERMS CONTAINED IN THIS STATEMENT, EXCEPT TO THE EXTENT LAWFULLY PERMITTED, DO NOT EXCLUDE, RESTRICT OR MODIFY AND ARE IN ADDITION TO THE MANDATORY STATUTORY RIGHTS APPLICABLE TO THE SALE OF THIS PRODUCT TO YOU.



# D Accessories and ordering information

You can increase the printer's capabilities with optional accessories and supplies. Use accessories and supplies specifically designed for the HP LaserJet 1000 Series Printer to ensure optimum performance.

## Ordering information

	Item	Description or use	Order number
<a href="#">Printing supplies</a>	HP Multipurpose paper	HP brand paper for a variety of uses (1 box of 10 reams, 500 sheets each). To order a sample, in the U.S., call 1-800-471-4701.	HPM1120
	HP LaserJet paper	Premium HP brand paper for use with HP LaserJet printers (1 box of 10 reams, 500 sheets each). To order a sample, in the U.S., call 1-800-471-4701.	HPJ1124
	HP LaserJet transparency film	HP brand transparency film for use with HP LaserJet monochrome printers.	92296T (letter) 92296U (A4)
<a href="#">Toner cartridges</a>	UltraPrecise toner cartridges	Replacement toner cartridges for the HP LaserJet 1000.	
		2,500 page cartridge	C7115A
<a href="#">Supplementary documentation</a>	<i>Guidelines for Paper and Other Print Media</i>	A guide to using paper and other print media with HP LaserJet printers.	5963-7863

## Ordering information (continued)

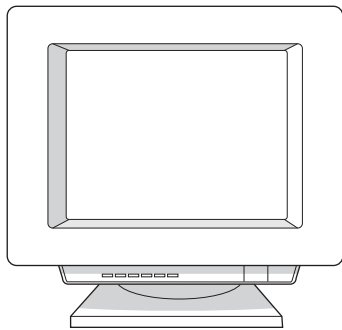
	<b>Item</b>	<b>Description or use</b>	<b>Order number</b>
<a href="#">Replacement parts</a>	Media pickup roller	Used to pick the media from the input tray and advance it through the printer.	RF0-1008CN
	Input tray	Used to hold media for the printer.	RG0-1013CN
	Input tray cover	Used to cover the media in the input tray.	RA0-1405CN
	Separation pad for the printer	Used to keep multiple sheets from feeding through the printer path.	RF0-1007CN

# E Installing shared printers

This chapter provides information on the following topics:

- [Installing a shared printer on Windows 98 and Millennium](#)
- [Installing a shared printer on Windows 2000](#)
- [Installing a shared printer on Windows XP](#)

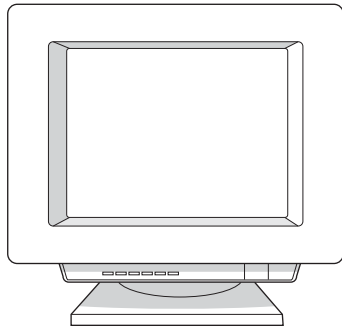
## Installing a shared printer on Windows 98 and Millennium



- 1 Quit all programs.
- 2 From the Windows system tray, click **Start**, select **Settings**, and click **Printers**.
- 3 Double-click the **Add Printer** icon.
- 4 In the Add Printer Wizard, click **Next**.
- 5 Select **Network printer**, and click **Next**.
- 6 Type the network share name in **Network path or queue name** (for example, \\computer\_name\printer\_share\_name), and click **Next**.
- 7 Click **Have Disk**.
- 8 Click **Browse**.
- 9 In the Open dialog, select the CD-ROM drive, select the appropriate .inf file, and click **OK**.
- 10 Select the HP LaserJet 1000 printer driver from the list, and click **Next**.
- 11 If you want to change the default printer name, type the new name in **Printer name**.
- 12 Click **Next**.
- 13 Select **Yes**, and click **Finish**. A test page prints verifying that the printer is set up properly.

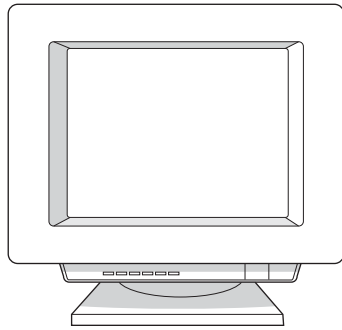


## Installing a shared printer on Windows 2000



- 1 Quit all programs.
- 2 From the Windows system tray, click **Start**, select **Settings**, and click **Printers**.
- 3 Double-click the **Add Printer** icon.
- 4 In the Add Printer Wizard, click **Next**.
- 5 Select **Local printer**, clear the **Automatically detect and install my Plug and Play printer** check box, and click **Next**.
- 6 Select **Create a new port**, select **Local Port** from the **Type** drop-down list, and click **Next**.
- 7 In the dialog displayed, type the new port name (for example, \\computer\_name\printer\_share\_name), and click **OK**.
- 8 Select **Use the following port**, select the port name that you just created from the list, and click **Next**.
- 9 Click **Have Disk**.
- 10 Click **Browse**.
- 11 In the Open dialog, select the CD-ROM drive, select the appropriate .inf file, and click **Open**.
- 12 Click **OK**.
- 13 Select the HP LaserJet 1000 printer driver from the list, and click **Next**.
- 14 If you want to change the default printer name, type the new name in **Printer name**.
- 15 Click **Next**.
- 16 Click **Next**.
- 17 Select **Yes**, and click **Next**.
- 18 Click **Finish**. A test page prints verifying that the printer is set up properly.

## Installing a shared printer on Windows XP



- 1 Quit all programs.
- 2 From the Windows system tray, click **Start**, and select **Control Panel**.
- 3 Double-click **Printers and Other Hardware**.
- 4 Click **Add a printer**.
- 5 In the Add Printer Wizard, click **Next**.
- 6 Select **Local printer**, clear the **Automatically detect and install my Plug and Play printer** check box, and click **Next**.
- 7 Select **Create a new port**, select **Local Port** from the **Type** drop-down list, and click **Next**.
- 8 In the dialog displayed, type the new port name (for example, \\computer\_name\printer\_share\_name), and click **OK**.
- 9 Select **Use the following port**, select the port name that you just created from the list, and click **Next**.
- 10 Click **Have Disk**.
- 11 Click **Browse**.
- 12 In the Open dialog, select the CD-ROM drive, select the appropriate .inf file, and click **Open**.
- 13 Click **OK**.
- 14 Select the HP LaserJet 1000 printer driver from the list, and click **Next**.
- 15 If you want to change the default printer name, type the new name in **Printer name**.
- 16 Click **Next**.
- 17 Click **Next**.
- 18 Select **Yes**, and click **Next**.
- 19 Click **Finish**. A test page prints verifying that the printer is set up properly.

# Index

## A

- Accessories
  - ordering directly 67
  - ordering information 91
- Acoustics 70
- America Online
  - accessing support services 66

## C

- Canadian DOC regulations 76
- Canceling print jobs 31
- Card stock
  - guidelines for using 83
  - printing 25
- Cleaning
  - media path 50
  - pickup roller 55
  - printer 48
- Clearing media jams 51
- Components, printer 14
- CompuServe
  - accessing support services 66
- Custom-sized media
  - printing 25

## D

- Declaration of Conformity 75
- Default settings
  - print quality 31
  - printer properties (driver) 28

## E

- EconoMode 31
- Electrical specifications 70
- ENERGY STAR rating 73
- Engine test page 58
- Envelopes
  - guidelines for using 82
  - printing 23
- Environmental Product Stewardship Program 73
- Environmental specifications 70
- Error messages
  - on screen 41
  - status light patterns 39
- European Customer Support Center 63
- Extended warranty 60

## F

- FCC compliance 72
- Finland, laser statement 77

## H

- Hardware
  - extended warranty 60
  - setting up 7
  - warranty 60
- Heavy media
  - guidelines for using 83
- Help, online 29
- HP Printing Supplies Environmental Program 74
- HP SupportPack 60, 67

## I

- Image defects
  - creases 47
  - curled media 47
  - dropouts 45
  - faded print 45
  - gray background 45
  - improperly formed characters 46
  - light print 45
  - loose toner 46
  - page skew 46
  - toner scatter outline 47
  - toner smear 46
  - toner specks 45
  - vertical lines 45
  - vertical repetitive defects 46
  - wavy text 47
  - wrinkles 47
- Input tray 15
- Installing
  - shared printers 93
  - software 7

## J

- Jams
  - clearing 51
- Japanese EMI statement 76

## K

- Korean EMI statement 76

## L

- Labels
  - guidelines for using 82
  - printing 22
- Laser safety statement 76
- Laser statement for Finland 77
- Letterhead
  - printing 24
- License agreement, software 86
- Limited warranty statement 87

## M

- Material safety data sheet 74
- Media
  - card stock, printing 25
  - choosing 20
  - custom-sized, printing 25
  - envelopes, printing 23
  - guidelines for using 81
  - labels, printing 22
  - letterhead, printing 24
  - loading 21
  - optimizing print quality 20
  - preprinted forms, printing 24
  - specifications 79
  - supported sizes and types 20
  - transparencies, printing 22
- Media guides 16
- Media handling problems 42
- Media jams
  - clearing 51
- Media path
  - cleaning 50
- Multiple pages per sheet
  - printing 30

## N

- N-up printing 30

## O

- Online help
  - printer properties (driver) 29
- Online support services 66
- Ordering information 91
- Output paths 16

## P

- Paper
  - choosing 20
  - guidelines for using 81
  - loading 21
  - optimizing print quality 20
  - specifications 79
  - supported sizes and types 20
- Paper handling problems 42
- Part numbers 91
- Physical specifications 70
- Pickup roller
  - changing 53
  - cleaning 55
- Port availability 71
- Power
  - turning off 18
  - voltage conversions 18
- Preprinted forms
  - printing 24
- Print quality
  - optimizing 20
  - settings 31
  - troubleshooting 45
- Printed page problems 43

## Printer

- capacities and ratings 71
- cleaning 48
- components 14
- engine test page 58
- hardware set up 7
- input tray 15
- loading media 21
- media guides 16
- output paths 16
- software installation 7
- specifications 70
- status light patterns 39
- status lights 15
- toner door 17
- troubleshooting 37
- turning power off 18
- voltage conversions 18
- Printer drivers
  - obtaining 67
- Printer properties (driver)
  - accessing 28
  - multiple pages per sheet 30
  - N-up printing 30
  - online help 29
  - print quality settings 31
  - watermarks 30
- Printers, shared
  - installing 93
- Printing
  - card stock 25
  - custom-sized media 25
  - envelopes 23
  - labels 22
  - letterhead 24
  - preprinted forms 24
  - transparencies 22
- Printing tasks
  - canceling print jobs 31
  - multiple pages per sheet 30
  - N-up printing 30
  - watermarks 30
- Product repair assistance 62

## R

- Recycling toner cartridges 34
- Regulatory statements 75

## S

- Sales office locations 68
- Saving toner 31
- Screen messages 41
- Separation pad
  - changing 56
- Service
  - availability 60
  - extended warranty 60
  - finding authorized providers 67
  - guidelines for repacking printer 60
  - hardware 60
  - in U.S. and Canada 62
  - information form 61
  - office locations 68

- Settings
  - print quality 31
  - printer properties (driver) 28
- Shared printers
  - installing 93
- Software
  - installing 7
  - license agreement 86
  - troubleshooting 44
- Software utilities
  - obtaining 67
- Specifications
  - media 79
  - printer 70
- Status light patterns 39
- Status lights 15
- Supplies
  - ordering directly 67
  - ordering information 91
- Support
  - America Online 66
  - availability 60
  - CompuServe 66
  - European Customer Support Center 63
  - HP Support Assistant CD 67
  - HP SupportPack 60, 67
  - in-country/region support numbers 64
  - obtaining printer drivers 67
  - online services 66
  - ordering accessories and supplies 67
  - post warranty 64
  - product repair assistance (U.S. and Canada) 62
  - Web 66

## T

- Toner
  - EconoMode 31
  - redistributing 35
- Toner cartridge
  - changing 36
  - life expectancy 34
  - limited warranty statement 89
  - non-HP toner cartridges 34
  - recycling 34
  - storing 34
- Toner cartridge area
  - cleaning 49
- Toner door 17
- Transparencies
  - guidelines for using 82
  - printing 22
- Troubleshooting
  - error messages on screen 41
  - finding solutions 38
  - image defects 45
  - media handling 42
  - media jams 51
  - print quality 45
  - printed page problems 43
  - printer 37
  - software 44
  - status light patterns 39

## U

- Utilities
  - obtaining 67

## V

- Voltage conversions 18

## W

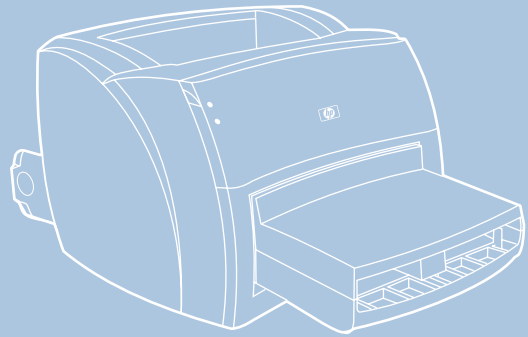
- Warranty
  - extended 60
  - hardware service 60
  - limited 87
  - toner cartridge 89
- Watermarks 30
- Web
  - accessing support services 66







# hp LaserJet 1000





## Free Manuals Download Website

<http://myh66.com>

<http://usermanuals.us>

<http://www.somanuals.com>

<http://www.4manuals.cc>

<http://www.manual-lib.com>

<http://www.404manual.com>

<http://www.luxmanual.com>

<http://aubethermostatmanual.com>

Golf course search by state

<http://golfingnear.com>

Email search by domain

<http://emailbydomain.com>

Auto manuals search

<http://auto.somanuals.com>

TV manuals search

<http://tv.somanuals.com>