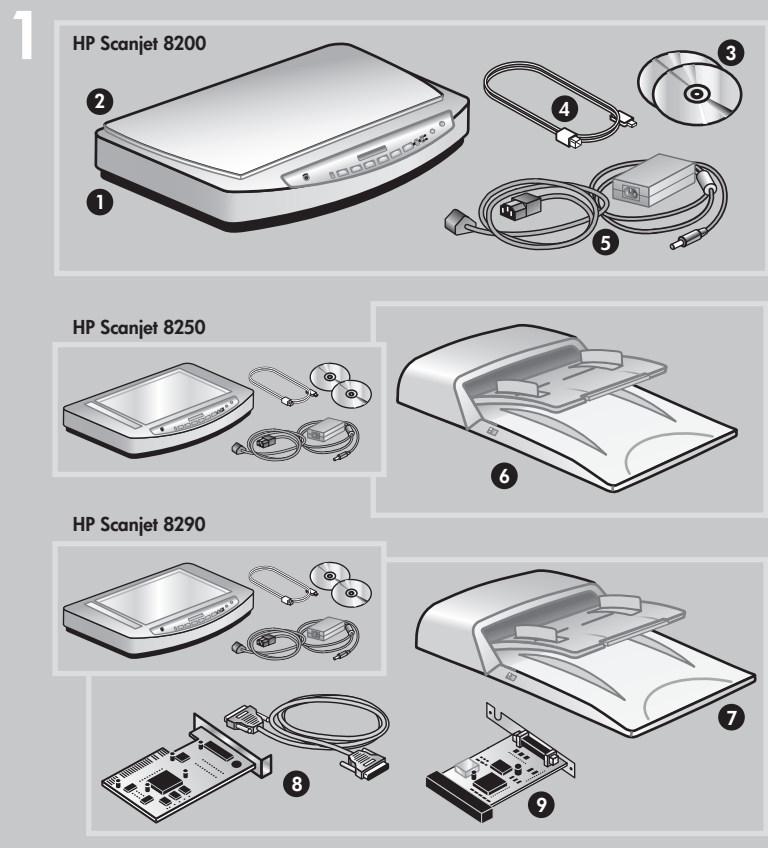


hp scanjet 8200 series

setup



check the box contents

HP Scanjet 8200

- HP Scanjet digital flatbed scanner
- Scanner lid with built-in Transparent Materials Adapter (TMA)
- One or more CDs
- Hi-Speed USB cable
- Power cable and AC adapter (two pieces)

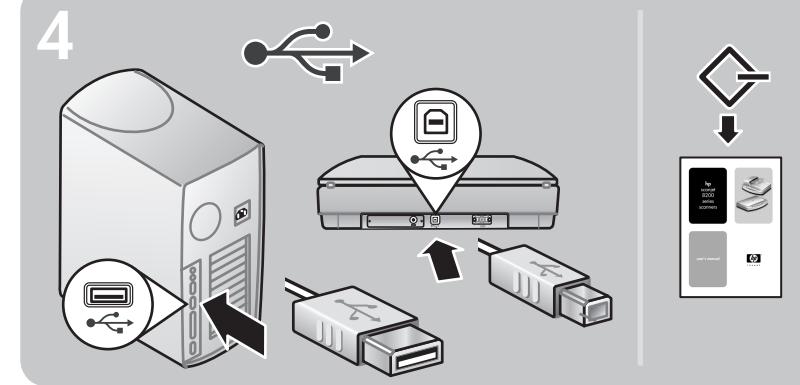
HP Scanjet 8250*

- Everything except the lid in the 8200 plus:
- 15 page-per-minute Automatic Document Feeder (ADF) with built-in Transparent Materials Adapter (TMA)

HP Scanjet 8290

- Everything except the lid in the 8200 plus:
- 25 page-per-minute Automatic Document Feeder (ADF) with built-in Transparent Materials Adapter (TMA)
 - SCSI kit (contains SCSI cable, SCSI card for PC, and software CD)
 - SCSI module for scanner

* Latin America model 8250 contains the SCSI kit and SCSI module



connect the scanner to the computer

Choose the attachment type: Hi-Speed USB or SCSI.*

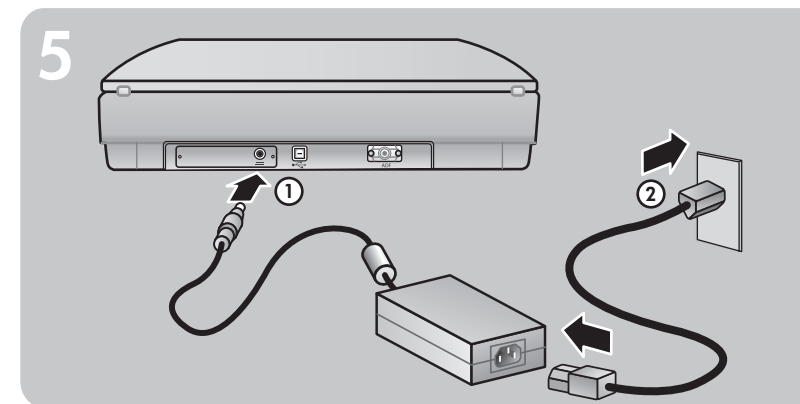
Connect with Hi-SpeedUSB

Connect the Hi-Speed USB cable between the Hi-Speed USB port on the scanner and the Hi-Speed USB port on the computer.

or

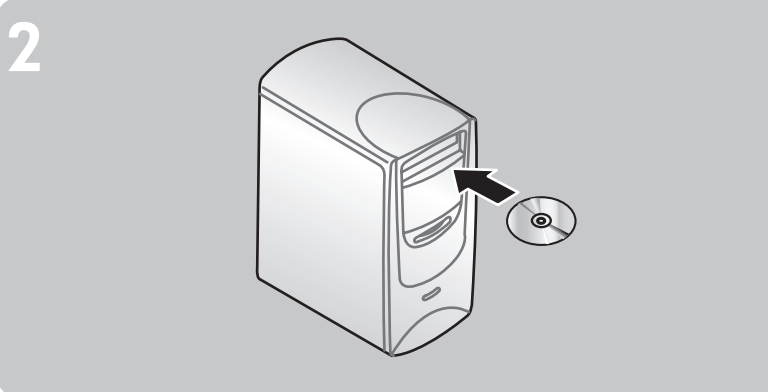
Connect with SCSI

*Refer to Appendix A in the User's Manual.



connect the power

- Connect the power adapter cable to the power port on the scanner.
- Connect one end of the power cable to the power adapter, and the other end to a surge protector or a grounded wall outlet.



install the software

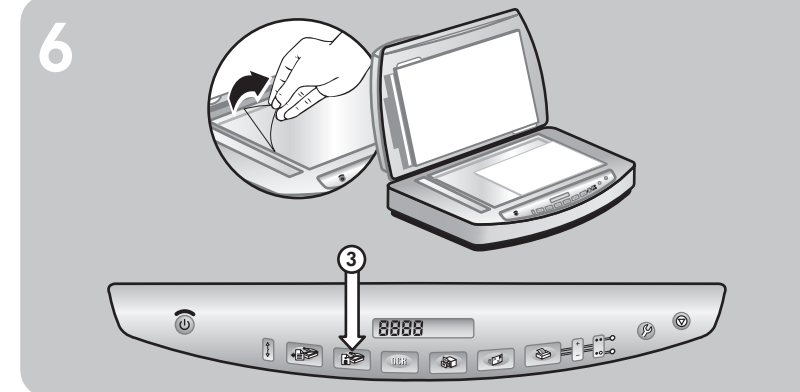
- Uninstall any previous versions of HP scanning software.
- Close all programs on the computer.
- Locate the HP Photo & Imaging software CD that is appropriate for your language and operating system.
- Insert the CD into the computer.

Windows

Follow the instructions on the screen. Or, if the installation program does not start automatically: On the Start menu, click **Run**, and type: x:\setup.exe (where x is the letter of the CD drive).

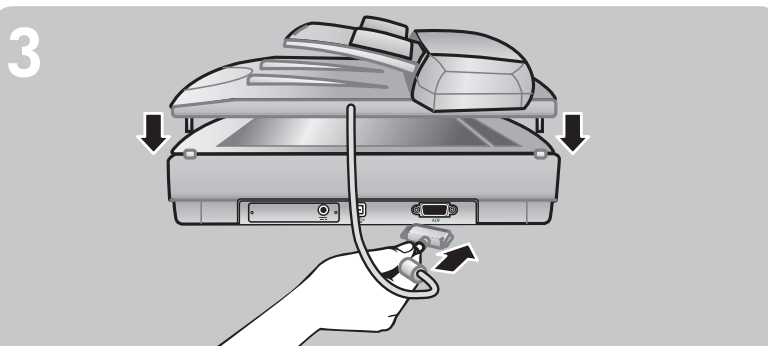
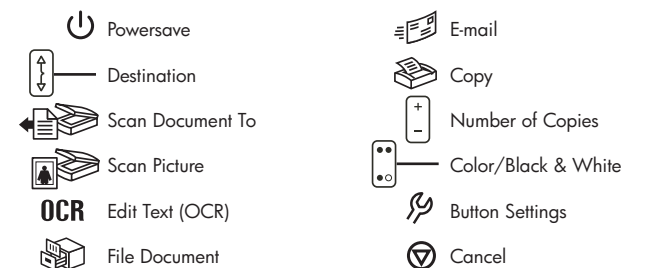
Macintosh

Double-click the installer icon on the CD and follow the instructions.



start scanning

- Remove the protective film from the scanner glass.
- Place a picture face down on the scanner glass and close the lid.
- Press the **Scan Picture** button.



attach the scanner lid

- Insert the hinges on the scanner lid or ADF into the hinge slots on the back of the scanner.
- Connect the accessories cable to the ADF/TMA port on the back of the scanner.



find help and support

¥ For information on installation problems, customer support, and how to use the scanner, see the User's Manual.

¥ Visit these websites:

www.scanjet.hp.com for product updates, promotions and scanning tips

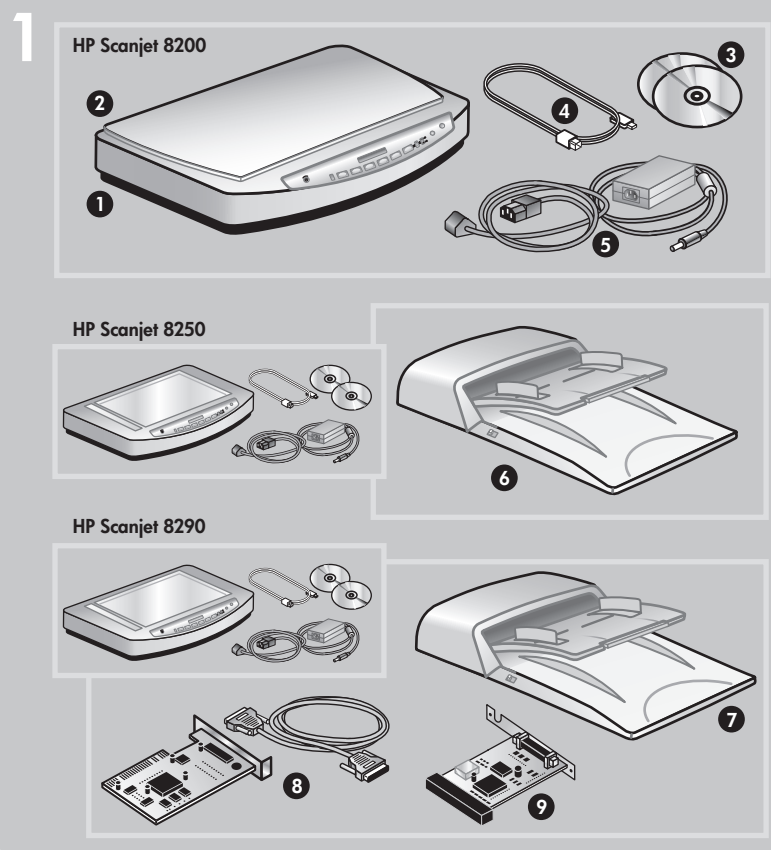
www.hp.com/support for customer support

www.shopping.hp.com (U.S. only) or www.hp.com (worldwide) for ordering HP accessories, supplies, and products



hp scanjet 8200 系列

安裝



檢查包裝盒內物品

HP Scanjet 8200

- 1 HP Scanjet 數位平台式掃描器
- 2 具有內建透明材料配接器 (TMA) 的掃描器蓋板
- 3 一張或多張光碟
- 4 高速 USB 纜線
- 5 電源線和交流電變壓器 (兩件)

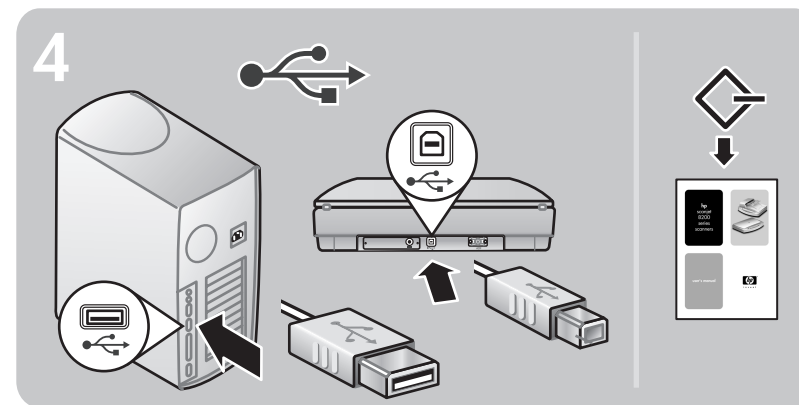
HP Scanjet 8250*

- 除了沒有 8200 型的蓋板，其他均相同，另外還包括：
- 6 每分鐘可送紙 15 頁的自動文件送紙器 (ADF)，具有內建透明材料配接器 (TMA)

HP Scanjet 8290

- 除了沒有 8200 型的蓋板，其他均相同，另外還包括：
- 7 每分鐘可送紙 25 頁的自動文件送紙器 (ADF)，具有內建透明材料配接器 (TMA)
 - 8 SCSI 套件 (包含 SCSI 纜線、適用於 PC 的 SCSI 卡以及軟體光碟)
 - 9 適用於掃描器的 SCSI 模組

* 拉丁美洲型號 8250 包含 SCSI 套件以及 SCSI 模組



將掃描器連接至電腦

選擇連接類型：高速 USB 或 SCSI。*

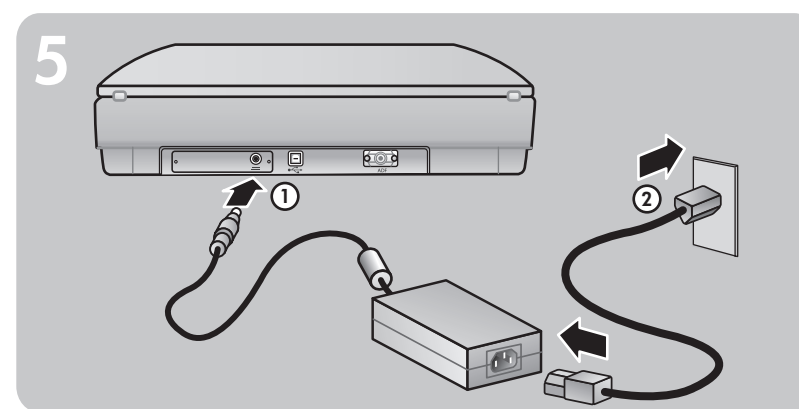
高速 USB 連接

將高速 USB 纜線連接至掃描器的高速 USB 連接埠和電腦的高速 USB 連接埠。

或者

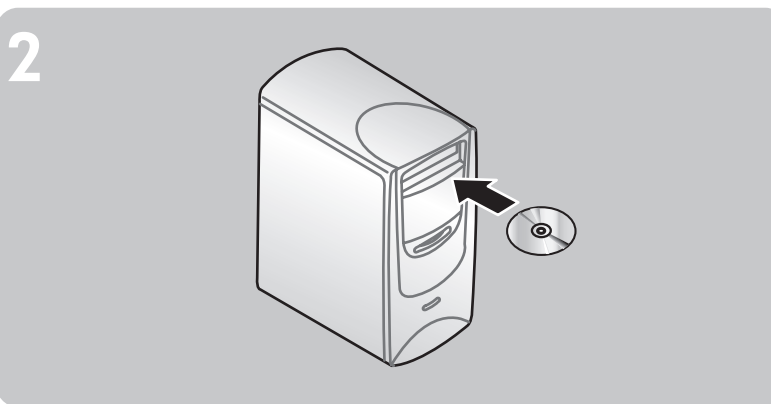
SCSI 連接

*請參閱《使用者手冊》中的附錄 A。



連接電源

1. 將變壓器纜線連接至掃描器的電源連接埠。
2. 將電源線的一端插入變壓器，另一端插入電湧保護器或正確接地的牆上插座。



安裝軟體

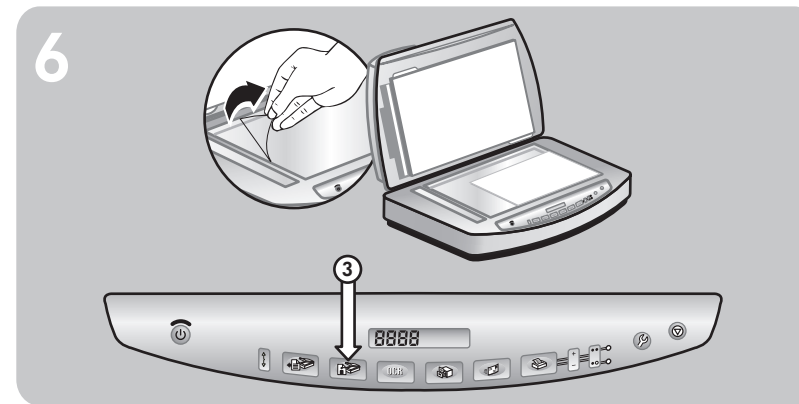
1. 解除安裝所有的舊版 HP 掃描軟體。
2. 關閉電腦中所有已開啟的程式。
3. 找到適合您的語言和作業系統的 HP 相片和影像軟體光碟片。
4. 將光碟插入電腦。

Windows

按照螢幕上的指示執行。或者，若安裝程式未自動啟動：在「開始」功能表上，按一下執行，然後鍵入：x:setup.exe (此處 x 為光碟機的字母代號)。

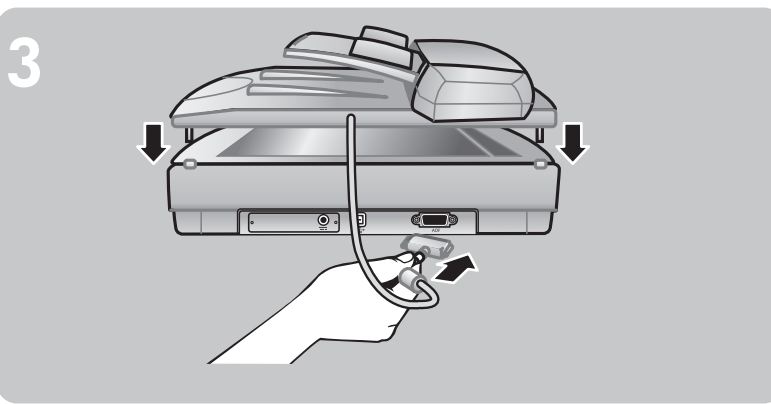
Macintosh

按兩下光碟上的安裝程式圖示，然後按照指示執行。



開始掃描

1. 從掃描器玻璃板上取下保護膜。
2. 將相片正面朝下放置在掃描器玻璃板上並合上蓋板。
3. 按下掃描相片按鈕。



連接掃描器蓋板

1. 將掃描器蓋板或 ADF 上的鉸鏈插入掃描器背面的鉸鏈插槽內。
2. 將配件纜線插入掃描器背面的 ADF/TMA 連接埠。



尋找幫助和支援

- 如需有關安裝問題、客戶支援以及如何使用掃描器的資訊，請參閱《使用者手冊》。
- 請造訪以下網站：
 - www.scanjet.hp.com，尋找關於產品更新、促銷以及掃描提示的資訊
 - www.hp.com/support，尋找關於客戶支援的資訊
 - www.shopping.hp.com (僅限美國) 或 www.hp.com (世界各地)，尋找關於訂購 HP 配件、耗材以及產品的資訊

Free Manuals Download Website

<http://myh66.com>

<http://usermanuals.us>

<http://www.somanuals.com>

<http://www.4manuals.cc>

<http://www.manual-lib.com>

<http://www.404manual.com>

<http://www.luxmanual.com>

<http://aubethermostatmanual.com>

Golf course search by state

<http://golfingnear.com>

Email search by domain

<http://emailbydomain.com>

Auto manuals search

<http://auto.somanuals.com>

TV manuals search

<http://tv.somanuals.com>