

HP Scanjet Professional 3000

Getting Started Guide



Copyright and license

© 2009 Copyright Hewlett-Packard Development Company, L.P.

Reproduction, adaptation or translation without prior written permission is prohibited, except as allowed under the copyright laws.

The information contained herein is subject to change without notice.

The only warranties for HP products and services are set forth in the express warranty statements accompanying such products and services. Nothing herein should be construed as constituting an additional warranty. HP shall not be liable for technical or editorial errors or omissions contained herein.

Trademark credits

ENERGY STAR is a U.S. registered service mark of the United States Environmental Protection Agency.

Microsoft and Windows are registered trademarks of Microsoft Corporation.

Regulatory information

Regulatory Model Identification Number: For regulatory identification purposes your product is assigned a Regulatory Model Number. The Regulatory Model Number for your product is FCLSD-1001. This regulatory number should not be confused with the marketing name (HP Scanjet Professional 3000 Sheet Feed scanner) or product number (L2723A). Additional regulatory information about your scanner can be found on the regulatory_supplement.pdf file on the CD shipped with your product.

Disposal of Waste Equipment by Users in Private Households in the European Union



This symbol on the product or on its packaging indicates that this product must not be disposed of with your other household waste. Instead, it is your responsibility to dispose of your waste equipment by handing it over to a designated collection point for the recycling of waste electrical and electronic equipment. The separate collection and recycling of your waste equipment at the time of disposal will help to conserve natural resources and ensure that it is recycled in a manner that protects human health and the environment. For more information about where you can drop off your waste equipment for recycling, please contact your local city office, your household waste disposal service or the shop where you purchased the product.

Contents

- 1 Scanner setup 2**
 - Check the box contents 2
 - Install the software 2
 - Set up the hardware 3
 - Test the installation 4

- 2 Product care and support 6**
 - User Guide 6
 - Cleaning and maintenance 6
 - Installation troubleshooting 6
 - Getting assistance 6

- 3 Specifications and warranty 7**
 - Scanner specifications 7
 - Environmental specifications 7
 - Hewlett-Packard limited warranty statement 7

1 Scanner setup

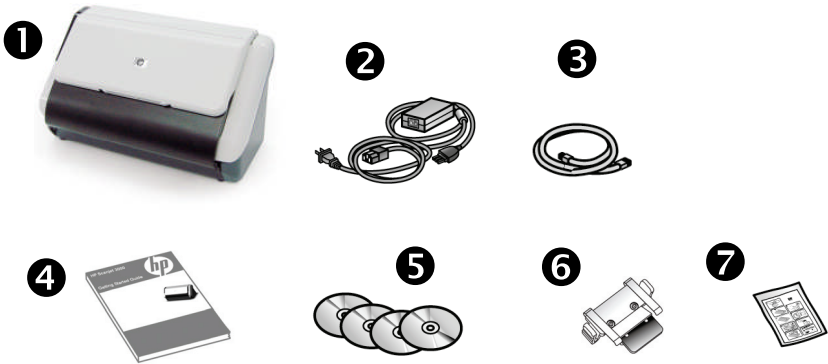
Follow these steps to set up the scanner.

Check the box contents

Unpack the scanner hardware. Be sure to remove any shipping tape.



NOTE: The contents of the box, including the number of scanning software CDs, can vary by country/region.



| | |
|---|-----------------------------------|
| 1 | HP Scanjet 3000 scanner |
| 2 | Power cable |
| 3 | USB cable |
| 4 | Getting Started Guide (this book) |
| 5 | Scanning software CDs |
| 6 | Pad assembly (spare) |
| 7 | Paper-path cleaning cloth |

Install the software



CAUTION: Do not connect the USB cable until you are prompted during the software installation.

1. Decide what software to install.
 - If you will be using the scanner with document-management and scanning software that you already own, you only need to install the HP Scanjet Driver.
 - If you do not already have document-management and scanning software, you can use the software that is shipped with the scanner. Read the onscreen descriptions of the software during the installation to decide what software to install. (The software and the number of CDs that are shipped with the scanner might vary by country/region.)
2. Insert the HP Scanjet Software CD into the computer CD drive. Wait for the installation dialog box to appear.
3. Click **Install Software**, and then follow the instructions on the screen.

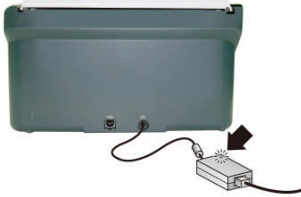
Set up the hardware

Complete the following tasks in order to set up the scanner hardware and prepare it for use.

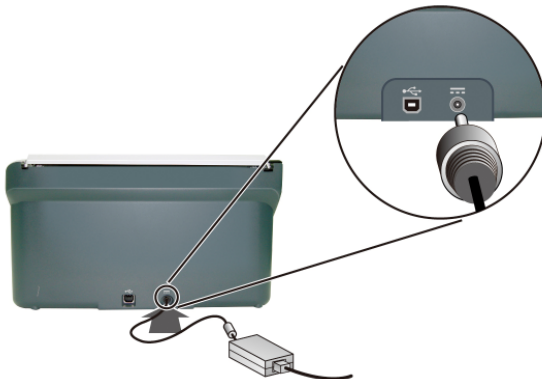
Connect the power supply

The green LED on the power supply case is on when the power supply is functioning correctly.

1. Connect the power supply to the power supply cable, and then plug the power supply cable into a power outlet or a surge protector.
2. Check that the green LED on the power supply case is on.



3. If the green LED is on, plug the power supply into the back of the scanner.



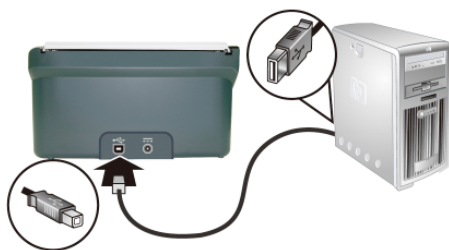
Connect the USB cable

- △ **CAUTION:** Be sure you install the HP scanning software before connecting the scanner to your computer with the USB cable. See “Install the software” on page 2.
-

Use the USB cable that came with the scanner to connect the scanner to the computer. Connect the square end of the cable to the scanner and the rectangular end of the cable to the computer.



NOTE: HP recommends using a USB port on the back of the computer for a more reliable connection to the scanner.



Test the installation

- △ **CAUTION:** Before placing an item in the document feeder, make sure that the item does not contain wet glue, correction fluid, or other substances that can be transferred to the interior of the scanner. Make sure there are no curls, wrinkles, staples, paper clips, or any other attached material. Sheets should not be stuck together.
-

1. Place a single page in the document feeder. The page should be faced down, with the top of the page pointing down.



2. Adjust the paper guides in the document feeder so they touch both sides of the page. Ensure that the page is straight and the guides are against the edges of the page.
3. Start the scan.
 - If you have installed the HP Scanjet scanner driver, press the **Scan** button. The page will feed through the scanner. The Scan Progress Window will appear on your computer screen and the scanned image will be saved in a default location or a user defined location. If the Scan Progress Window does not appear on your computer screen, see the scanner User Guide for installation troubleshooting.
 - Scan from the software application you intend to use for scanning. If the scan processes as normal for this application, then the software installation is successful. If it does not process normally, consult the software help for your application.

2 Product care and support

This section describes the options for product support.

User Guide

The scanner User Guide is the primary source for scanner information. It provides information about using, maintaining, and troubleshooting the scanner.

To open the User Guide, click **Start**, point to **Programs** or **All Programs**, point to **HP**, point to **Scanjet**, point to **3000**, and then click **User Guide**.

If your software is not installed yet, insert the HP CD and click the **View or Print Guides** button.

Cleaning and maintenance

Occasional cleaning of the scanner helps ensure higher-quality scans. The amount of care necessary depends upon several factors, including the amount of use and the environment. You should perform routine cleaning as necessary.

For in-depth instructions about maintaining the scanner, see the scanner User Guide.

Installation troubleshooting

For installation troubleshooting, see the scanner User Guide.

Getting assistance

For detailed information about HP support offerings, see the scanner User Guide or go to www.hp.com/support.

3 Specifications and warranty

This section contains product specifications and warranty information for your scanner.

Scanner specifications

For detailed scanner and paper specifications, see the scanner User Guide.

Environmental specifications

For environmental specifications, see the scanner User Guide.

Hewlett-Packard limited warranty statement

HP Scanjet 3000 scanner

| Model | Asia/Pacific | Americas | Europe/Middle East/ Africa |
|-------|--------------|----------|-------------------------------|
| 3000 | 1 year | 1 year | 1 year |

1. HP warrants to you, the end-user customer, that HP hardware, accessories, and supplies will be free from defects in materials and workmanship after the date of purchase, for the period specified above. If HP receives notice of such defects during the warranty period, HP will, at its option, either replace or repair products which prove to be defective. Replacement products may be either new or equivalent in performance to new.
2. HP warrants to you that HP software will not fail to execute its programming instructions after the date of purchase, for the period specified above, due to defects in material and workmanship when properly installed and used. If HP receives notice of such defects during the warranty period, HP will replace software which does not execute its programming instructions due to such defects.
3. HP does not warrant that the operation of HP products will be uninterrupted or error free. If HP is unable, within a reasonable time, to repair or replace any product to a condition as warranted, you will be entitled to a refund of the purchase price upon prompt return of the product.
4. HP products may contain remanufactured parts equivalent to new in performance or may have been subject to incidental use.
5. This warranty does not apply to defects resulting from (a) improper or inadequate maintenance or calibration, (b) software, interfacing, parts, or supplies not supplied by HP, (c) unauthorized modification or misuse, (d) operation outside of the published environmental specifications for the product, or (e) improper site preparation or maintenance.
6. TO THE EXTENT ALLOWED BY LOCAL LAW, THE ABOVE WARRANTIES ARE EXCLUSIVE AND NO OTHER WARRANTY OR CONDITION, WHETHER

7. WRITTEN OR ORAL, IS EXPRESSED OR IMPLIED, AND HP SPECIFICALLY DISCLAIMS ANY IMPLIED WARRANTIES OR CONDITIONS OF MERCHANTABILITY, SATISFACTORY QUALITY, AND FITNESS FOR A PARTICULAR PURPOSE. Some countries/regions, states, or provinces do not allow limitations on the duration of an implied warranty, so the above limitation or exclusion might not apply to you. This warranty gives you specific legal rights, and you might also have other rights that vary from country/region to country/ region, state to state, or province to province.

8. HP's limited warranty is valid in any country/region or locality where HP has a support presence for this product and where HP has marketed this product. The level of warranty service you receive may vary according to local standards. HP will not alter the form, fit, or function of the product to make it operate in a country/region in which it was never intended to function for legal or regulatory reasons.

9. TO THE EXTENT ALLOWED BY LOCAL LAW, THE REMEDIES IN THIS WARRANTY STATEMENT ARE YOUR SOLE AND EXCLUSIVE REMEDIES. EXCEPT AS INDICATED ABOVE, IN NO EVENT WILL HP OR ITS SUPPLIERS BE LIABLE FOR LOSS OF DATA OR FOR DIRECT, SPECIAL, INCIDENTAL, CONSEQUENTIAL (INCLUDING LOST PROFIT OR DATA), OR OTHER DAMAGE, WHETHER BASED IN CONTRACT, TORT, OR OTHERWISE. Some countries/regions, states, or provinces do not allow the exclusion or limitation of incidental or consequential damages, so the above limitation or exclusion may not apply to you.

10. THE WARRANTY TERMS CONTAINED IN THIS STATEMENT, EXCEPT TO THE EXTENT LAWFULLY PERMITTED, DO NOT EXCLUDE, RESTRICT, OR MODIFY AND ARE IN ADDITION TO THE MANDATORY STATUTORY RIGHTS APPLICABLE TO THE SALE OF THIS PRODUCT TO YOU.

© 2008 Hewlett-Packard Development Company, L.P.

www.hp.com

EN FR ES PT



L2706-90003



i n v e n t

Free Manuals Download Website

<http://myh66.com>

<http://usermanuals.us>

<http://www.somanuals.com>

<http://www.4manuals.cc>

<http://www.manual-lib.com>

<http://www.404manual.com>

<http://www.luxmanual.com>

<http://aubethermostatmanual.com>

Golf course search by state

<http://golfingnear.com>

Email search by domain

<http://emailbydomain.com>

Auto manuals search

<http://auto.somanuals.com>

TV manuals search

<http://tv.somanuals.com>