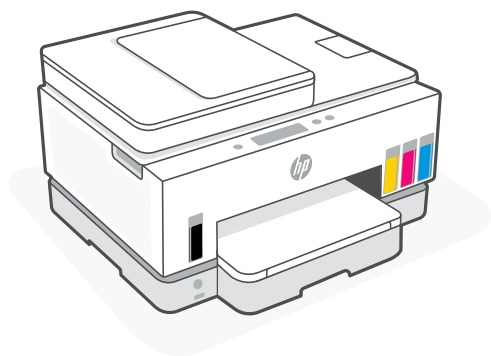




# Setup and Reference Guide

---

设置和参考指南

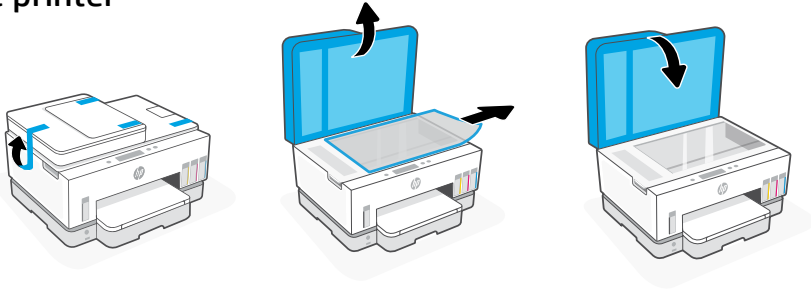


**HP Smart Tank**  
790 series



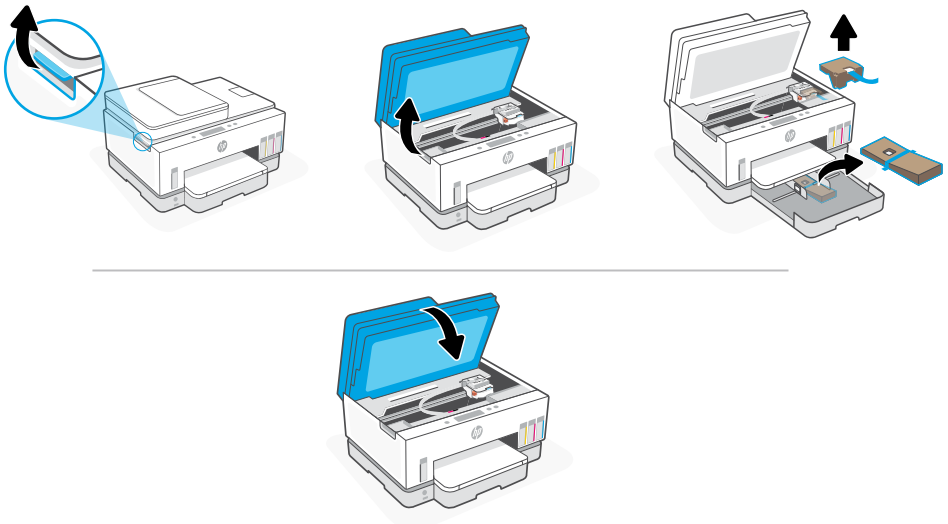
## Prepare printer

1



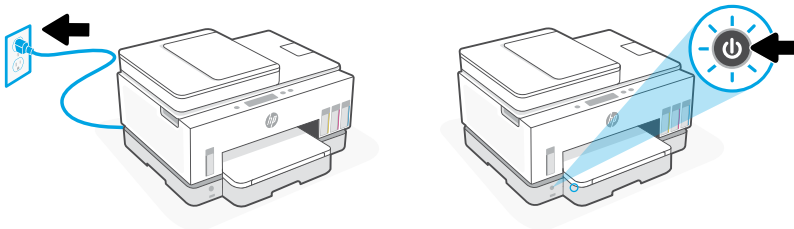
Remove all tape and packing materials. Close the scanner lid after opening.

2



Lift the ink access door by the side latch. Remove all cardboard, then close the ink access door.

3



Plug in and turn on the printer.

# Choose an option to continue printer setup

## Recommended

### Option 1: Guided setup with HP Smart

Go to [123.hp.com](https://123.hp.com) on a mobile device or computer to install HP Smart.



View animations to connect to Wi-Fi, fill ink tanks, install printheads, load paper, and perform printheads alignment in the HP Smart software. HP Smart has everything you need to finish setup.



### Option 2: Manual setup

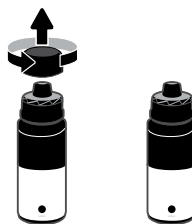
Follow illustrations in this guide to set up the hardware, then use HP Smart software to connect to Wi-Fi and finish setup.



## 1 Open the ink bottles

### For ink bottles with screw-cap:

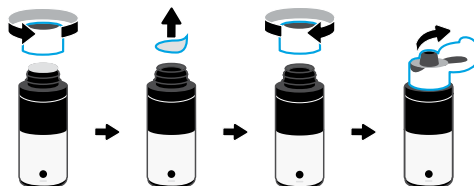
Twist open the cap.



### For ink bottles with flip-cap:

Twist open the cap and remove the seal.

Replace the cap. Flip open the top of the cap.



## 2 Fill the ink tanks

1. Open the ink access door and tank covers.

2. Open the cap of the ink tank to be filled.

3. Place the opened bottle upside down on the tank.

The screw-cap bottle will click into place.

Let the ink drain into the tank.

4. Close the bottle cap, tank cap, and tank cover.

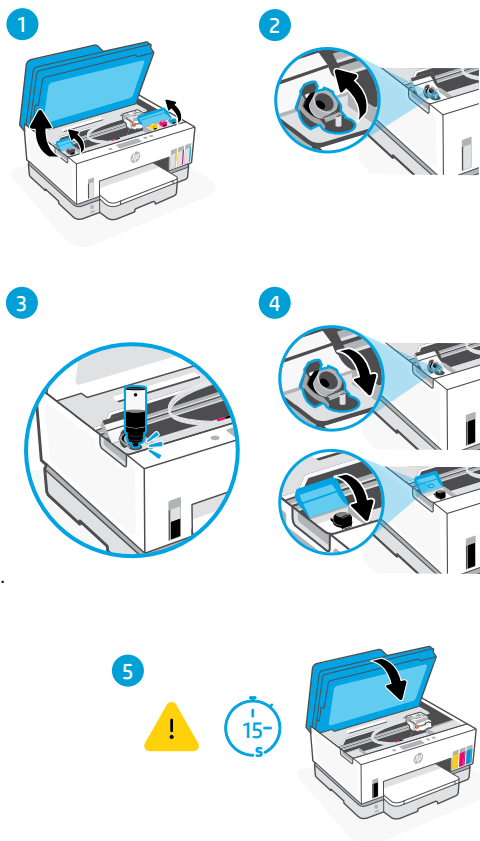
Repeat the above steps as needed to fill other tanks.

5. When tanks are filled, close the ink access door securely and wait for approximately 15 seconds.



Make sure to close the ink access door so the printer can detect ink, before you install printheads.

**Note:** If there is leftover ink, keep the bottle upright in a cool and dry place.



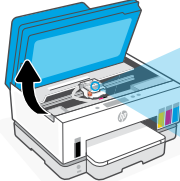
### 3 Install printheads



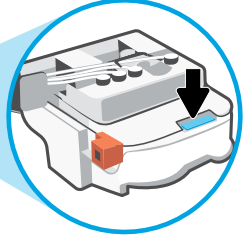
You must fill the ink tanks before installing printheads. Install the printheads when prompted on the printer control panel.

1. Lift the ink access door and wait for the carriage to move to center and stop.

1



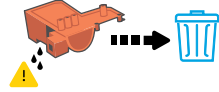
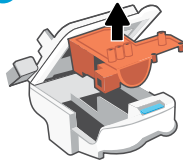
2



2. Press the blue button to open the printhead cover.

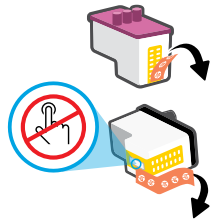
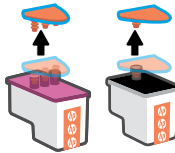
3. Remove and discard the orange guard. Handle carefully to avoid ink stains.

3



4. Remove the orange cap and protective tape on both printheads.

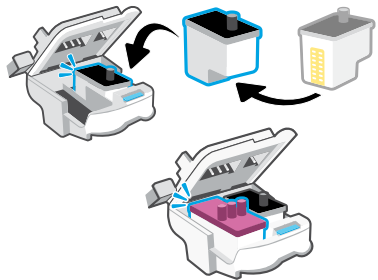
4



**Caution:** Do not touch the electric contacts or print nozzles under the tape.

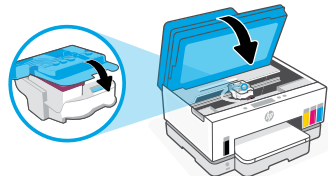
5. Insert the printheads and click into place.

5

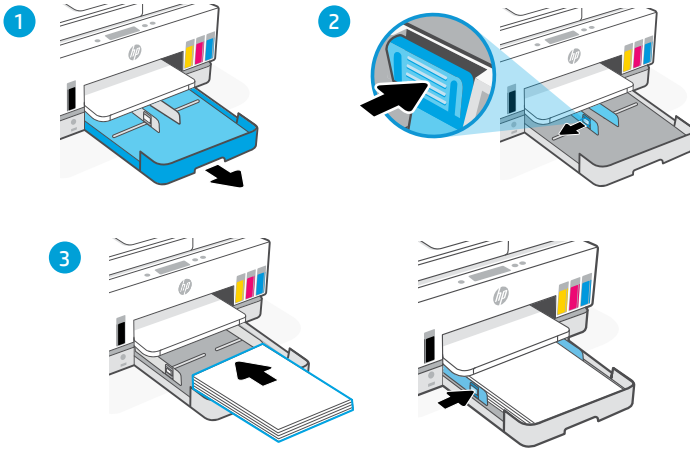


6. Close the printhead cover and the ink access door.

6

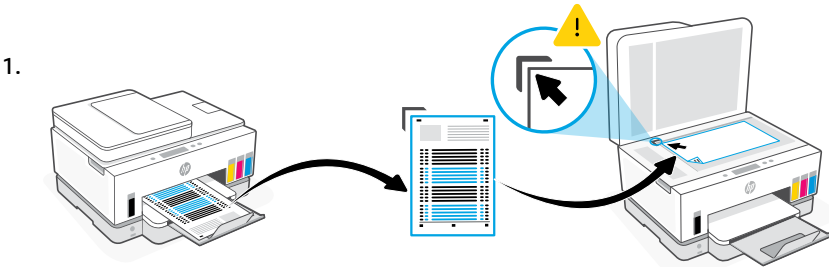


## 4 Load paper

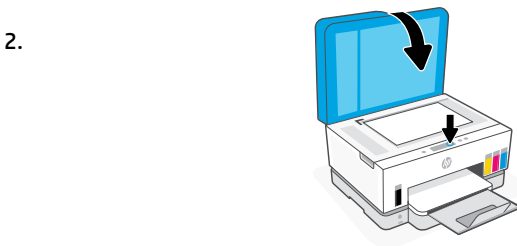


1. Open the paper tray.
2. Slide out the guides.
3. Load unused Letter or A4 paper and adjust the guides. Close the tray.

## 5 Print and scan alignment page

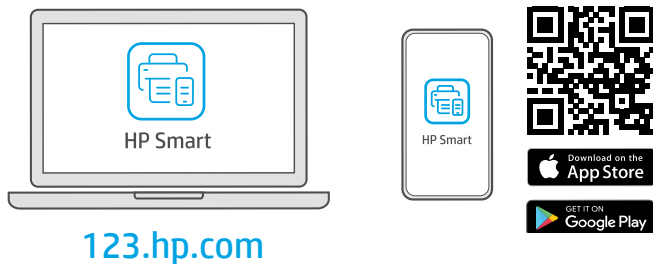


Wait for the printhead alignment page to print. Open the scanner lid and place the printed page face-down on the scanner glass, aligned to the indicated corner.



Close the scanner lid. Follow the onscreen instructions to scan the page.

## 6 Install HP Smart software



Install HP Smart software from [123.hp.com](https://123.hp.com) on a computer or mobile device. HP Smart will help you connect to a network and start printing.



### Get help with setup

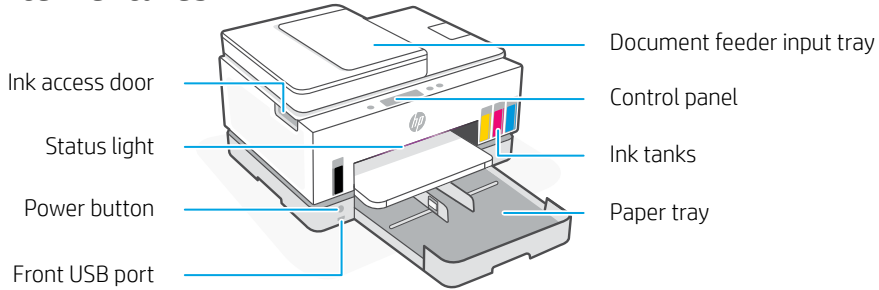
Find setup information and videos online.

[hp.com/support/printer-setup](https://hp.com/support/printer-setup)

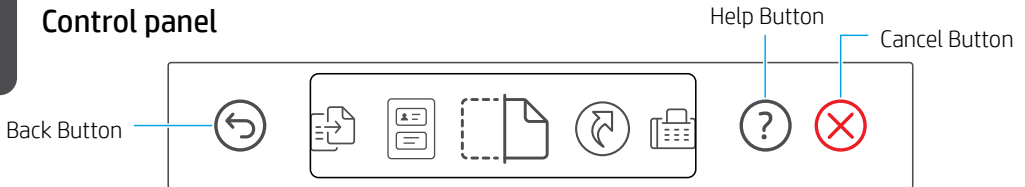










## Printer features



## Control panel



## Display icons

-  **Menu**  
Access printer information, settings, reports, help videos, and more.
-  **Copy**
-  **ID Card Copy**  
Place a card anywhere on the scanner glass to copy both sides of the card onto the same page.
-  **Scan**
-  **Fax**
-  **Shortcuts**  
Create one-touch shortcuts for printing, emailing, and saving documents.  
Visit [hp.com/support](#) for details.

## Status lights

### Pulsing purple

Wi-Fi setup mode. Lasts for two hours after first turning on the printer.

### Pulsing blue

Trying to connect to network.

### Solid light blue

Connected to network.

### Solid amber

Needs attention. Check the printer display or HP Smart app for troubleshooting information.

### Pulsing amber

Turn printer off and then on.

### Pulsing light green

Updating, busy, or turning on or off.

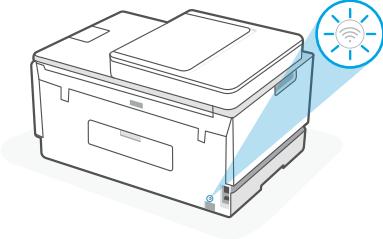
### Pulsing white

Printing or processing a job.



## Help and tips for Wi-Fi and connectivity

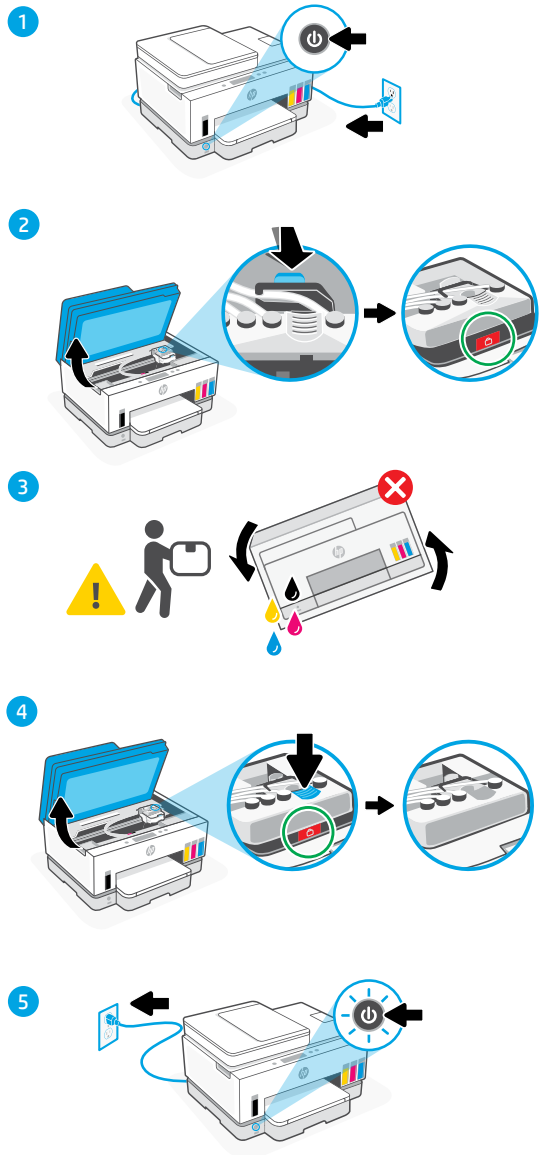
If the software is unable to find your printer during setup, check the following conditions to resolve the issue.

Potential Issue	Solution
<p>Printer Wi-Fi setup mode timed out</p> 	<p>If the status light on the front of the printer is not pulsing purple, the printer might not be in Wi-Fi setup mode. Restart Wi-Fi setup mode:</p> <ol style="list-style-type: none"> <li>1. On the back of the printer, press and hold the Wi-Fi button for 5 seconds or until the printer display shows a prompt.</li> <li>2. On the prompt, touch OK to restore original network settings. The status light will pulse purple.</li> <li>3. Wait for one minute. Close and reopen HP Smart, and then try connecting again.</li> </ol>
<p>Computer or mobile device too far from printer</p>	<p>Move your computer or mobile device closer to the printer. Your device might be out of range of the printer's Wi-Fi signal.</p>
<p>Computer connected to a Virtual Private Network (VPN) or remote work network</p>	<p>Disconnect from a VPN before installing HP Smart software. You can't install apps from the Microsoft Store when connected to a VPN. Connect to the VPN again after finishing printer setup.</p> <p><b>Note:</b> Consider your location and the security of the Wi-Fi network before disconnecting from a VPN.</p>
<p>Wi-Fi turned off on computer (computer connected by Ethernet)</p>	<p>If your computer is connected by Ethernet, turn on the computer's Wi-Fi while setting up the printer. Disconnect the Ethernet cable temporarily to complete setup over Wi-Fi.</p>
<p>Bluetooth is turned off on your computer or mobile device</p> <p>Location is turned off on your mobile device</p>	<p>Turn on Bluetooth for the computer or mobile device being used to complete printer setup. For mobile devices, turn on Location services also. Bluetooth and Location help the software find your network and printer.</p> <p><b>Note:</b> Your location is not being determined and no location information is being sent to HP as part of the setup process.</p>

# Move printer properly

To move the printer to a different location outside of your home or office after initial setup, follow these instructions to prevent ink leaks or printer damage.

1. Turn off the printer and remove the power cord.
2. Lift the ink access door. Pull the gray tab (toward the front of the printer) and lift the printhead cover until the red label is visible. Close the ink access door.
3. Pack the printer in a box (if available). While moving the printer, keep the printer horizontal to prevent ink leakage.
4. After unpacking the printer, push down on the printhead cover to close. Make sure the cover is properly closed.
5. Connect the power cord and turn on the printer.



[hp.com/support/transportsmarttank](https://hp.com/support/transportsmarttank)



## Help and Support

For printer troubleshooting and videos, visit the HP support site. Enter your model name to find the printer.



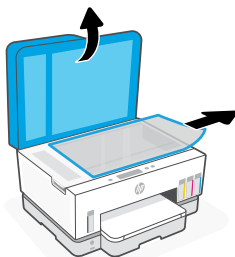
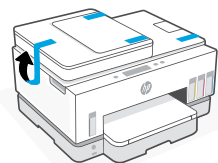
[hp.com/support](https://hp.com/support)





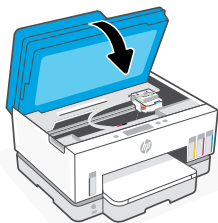
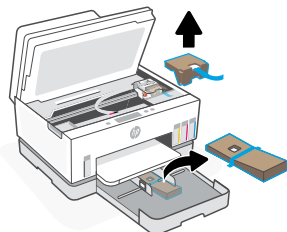
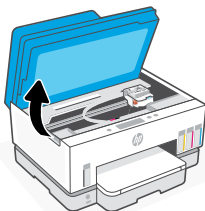
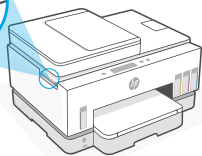
## 准备打印机

1



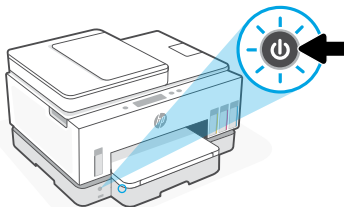
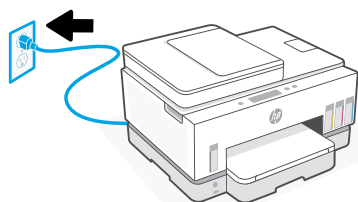
取下所有胶带和包装材料。打开后合上扫描仪盖板。

2



从侧面卡销抬起墨水检修门。取下所有硬纸板，然后关闭墨水检修门。

3



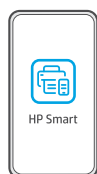
插入电源线，然后打开打印机。

## 选择选项以继续打印机设置

### 推荐

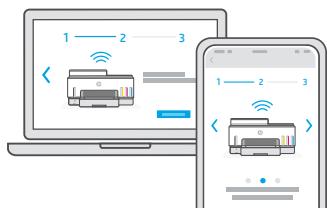
#### 选项 1: HP Smart 引导设置

在移动设备或计算机上访问 [123.hp.com](https://123.hp.com), 安装 HP Smart。



[123.hp.com](https://123.hp.com)

在 HP Smart 软件中查看动画, 然后连接 Wi-Fi、灌注墨槽、安装打印头、放入纸张并执行打印头校准。HP Smart 中有各种信息, 可以帮助您轻松完成设置。



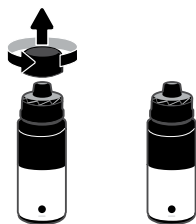
#### 选项 2: 手动设置

按照本指南中的说明设置硬件, 然后使用 HP Smart 软件来连接 Wi-Fi 并完成设置。

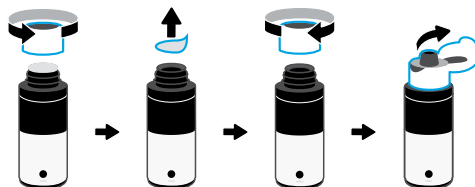


## 1 打开墨水瓶

对于旋盖墨水瓶：  
旋开盖帽。

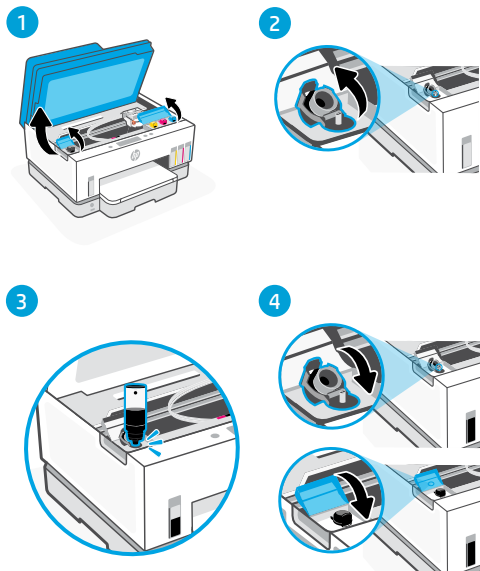



对于翻盖墨水瓶：  
旋开盖帽，然后取下密封件。  
装回盖帽。翻开盖帽顶部。



## 2 灌注墨槽

1. 打开墨水检修门和槽盖。
2. 打开待灌注墨槽的盖帽。
3. 将打开的墨水瓶上下颠倒置于墨槽上。  
旋盖墨水瓶会卡入到位。  
让墨水注入到墨槽中。
4. 关闭墨水瓶盖、墨槽盖帽和槽盖。  
根据需要重复上述步骤，灌注其他墨槽。
5. 灌注墨槽后，牢牢关闭墨水检修门，  
并等待大约 15 秒钟。



 确保关闭墨水检修门，使打印机可以检测到墨水，然后再安装打印头。

5



注：如果有剩余墨水，  
请将墨水瓶直立于阴凉干燥处。

### 3 安装打印头

 务必先灌注墨槽，然后再安装打印头。在打印机控制面板出现提示后安装打印头。

1. 抬起墨水检修门，等待托架移动至中央位置并停住。

2. 按下蓝色按钮，打开打印头盖。

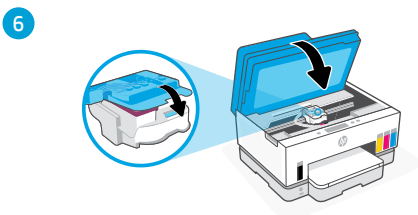
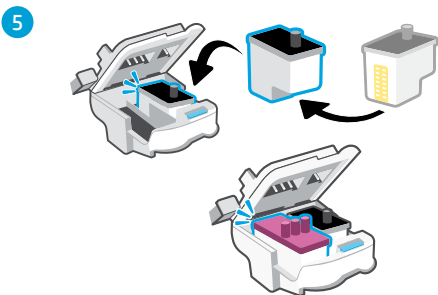
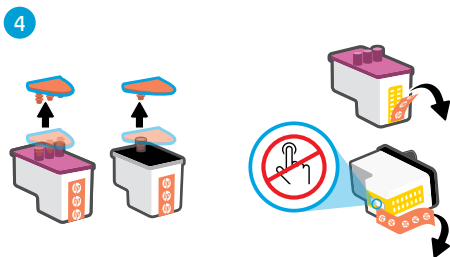
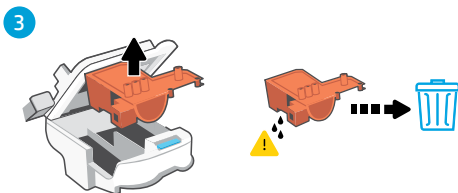
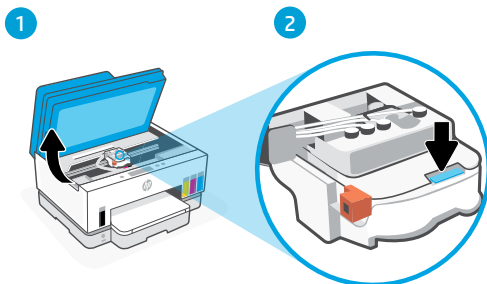
3. 取出橙色防护件并将其丢弃。  
请小心操作，以防沾上墨渍。

4. 取下两个打印头上的橙色盖帽和保护胶带。

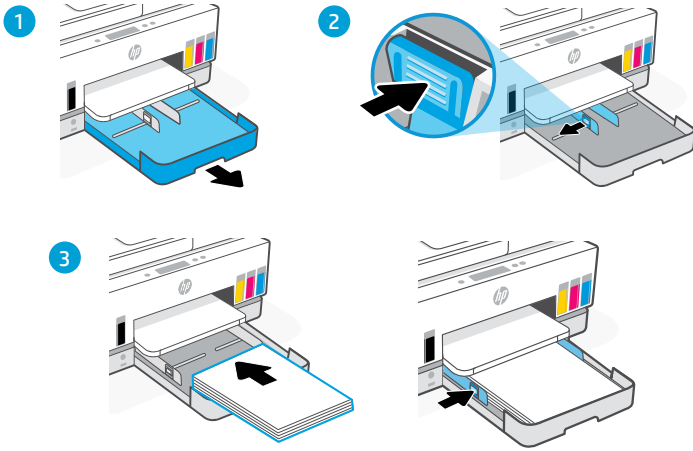
**小心：** 请不要触碰胶带下的电子触点和打印喷嘴。

5. 插入打印头并将其卡入到位。

6. 关闭打印头盖和墨水检修门。

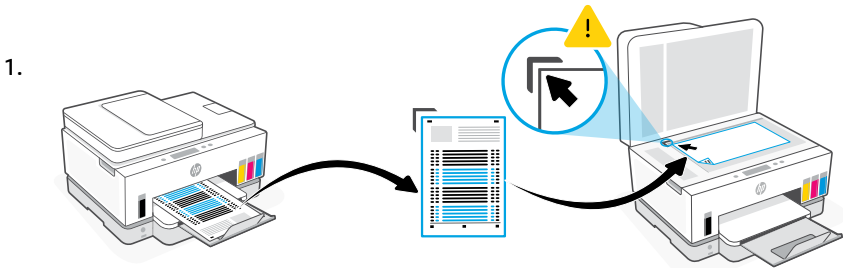


## 4 放入纸张

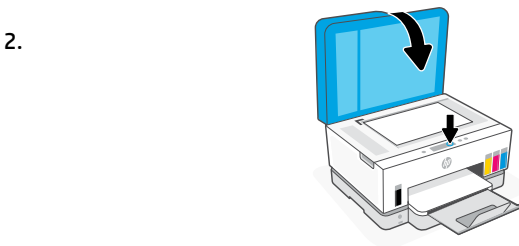


1. 打开纸盒。
2. 抽出导轨。
3. 装入未使用的 Letter 或 A4 纸，然后调整导轨。合上纸盒。

## 5 打印和扫描校准页



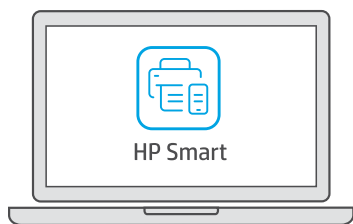
等待打印头校准页完成打印。打开扫描仪盖板，将已打印页面的打印面朝下放在扫描仪玻璃板上，对齐到指定角点位置。



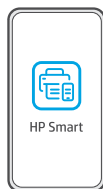
合上扫描仪盖板。按照屏幕上的说明扫描页面。



## 6 安装 HP Smart 软件



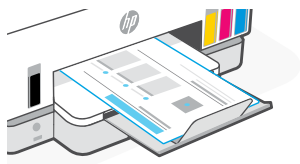
[123.hp.com](https://123.hp.com)



从 [123.hp.com](https://123.hp.com) 将 HP Smart 软件安装在计算机或移动设备上。  
HP Smart 将帮助您连接网络和开始打印。

## 7 设置微信打印（可选）

当完成以上安装步骤并将打印机成功连接至无线网络后，  
打印机将自动打印 出一张带有二维码的信息页。

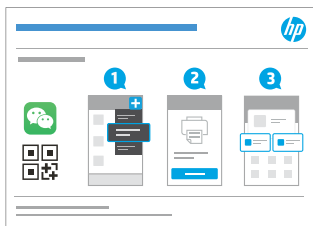


如果您没有获得信息页，请访问此网址或扫描此二维码并根据教程重新打印信息页。

<https://iot.eprintsw.com/www/faq.html>



使用微信扫描信息页上的二维码以启用“惠普云打印”微信小程序，  
并根据页面提示完成打印机的绑定。



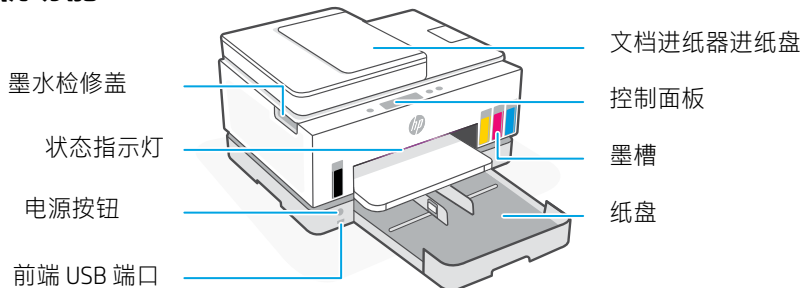
获取有关设置的帮助  
在线查找设置信息和视频。

[hp.com/support/printer-setup](https://hp.com/support/printer-setup)

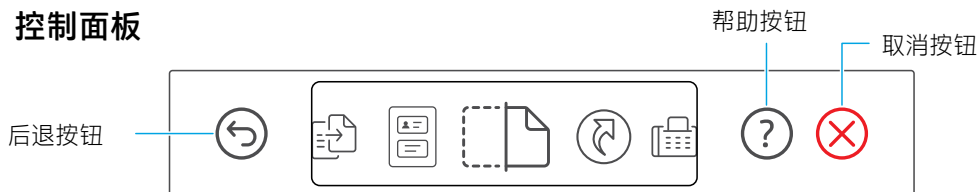







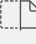


## 打印机功能








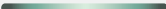
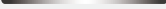
## 控制面板



## 显示屏图标

-  **菜单**  
访问打印机信息、设置、报告、帮助视频等。
-  **复印**
-  **身份证复印**  
将身份证放在扫描仪玻璃板上的任意位置上，将身份证的两面复印到同一页上。
-  **扫描**
-  **传真**
-  **快捷方式**  
创建用于打印文档，发送电子邮件和保存文档的一键快捷方式。  
访问 [hpsmart.com](http://hpsmart.com) 了解详细信息。

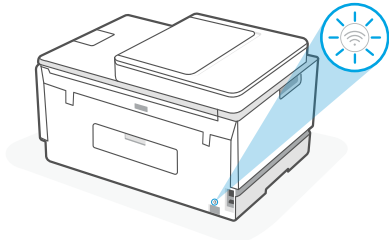
## 状态指示灯

- **脉冲紫色光**  
设备处于 Wi-Fi 设置模式。首次打开打印机电源之后持续两小时。
- **脉冲蓝色光**  
尝试连接到网络。
- **浅蓝色常亮**  
已连接到网络。
- **琥珀色常亮**  
需要注意。请查看打印机显示屏或 HP Smart 应用以了解有关故障排除的信息。
- **脉冲琥珀色光**  
关闭打印机，然后重新打开。
- **脉冲浅绿色光**  
正在更新、繁忙或正在打开或关闭。
- **脉冲白色光**  
正在打印或正在处理作业。

## Wi-Fi 及连接帮助与提示

如果软件在设置过程中未能找到打印机，请检查以下情况以解决问题。

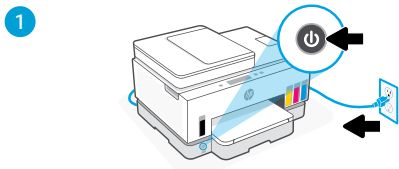
潜在问题	解决方案
打印机 Wi-Fi 设置模式超时	<p>如果打印机正面的状态指示灯未脉冲紫色光，则打印机可能未处于 Wi-Fi 设置模式。重新启动 Wi-Fi 设置模式：</p> <ol style="list-style-type: none"><li>1. 在打印机背面，按住 Wi-Fi 按钮 5 秒钟，或直至打印机显示屏显示提示。</li><li>2. 出现提示时，点击“确定”以恢复原始网络设置。状态指示灯将亮起脉冲紫色光。</li><li>3. 等待 1 分钟。关闭并重新打开 HP Smart，然后尝试重新连接。</li></ol>
计算机或移动设备离打印机过远	<p>将计算机或移动设备靠近打印机。设备可能已超出打印机的 Wi-Fi 信号范围。</p>
计算机已连接至虚拟专用网络 (VPN) 或远程工作网络	<p>请先断开 VPN，然后再安装 HP Smart 软件。与 VPN 连接时，无法通过 Microsoft Store 安装应用。完成打印机设置后再连接 VPN。</p> <p><b>注意：</b>在断开 VPN 连接之前，请考虑您的位置和 Wi-Fi 网络的安全性。</p>
计算机上的 Wi-Fi 已关闭 (计算机通过以太网连接)。	<p>如果计算机通过以太网连接，请在设置打印机时开启计算机的 Wi-Fi。暂时断开以太网电缆，以便通过 Wi-Fi 完成设置。</p>
计算机或移动设备上的蓝牙已关闭。 移动设备上的定位功能已关闭。	<p>开启正在使用的计算机或移动设备的蓝牙，以完成打印机设置。对于移动设备，还应开启定位服务。蓝牙和定位功能有助于软件找到您的网络和打印机。</p> <p><b>注意：</b>我们不会确定您的位置，设置过程中，也不会将位置信息发送到 HP。</p>



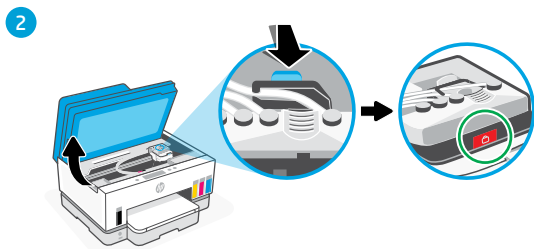
# 正确移动打印机

初始安装后将打印机移动到住宅或办公室以外的其他位置，请按照以下说明进行操作，防止墨水泄漏或打印机损坏。

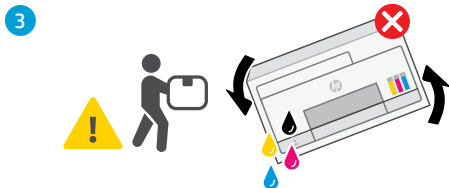
1. 关闭打印机，断开电源线。



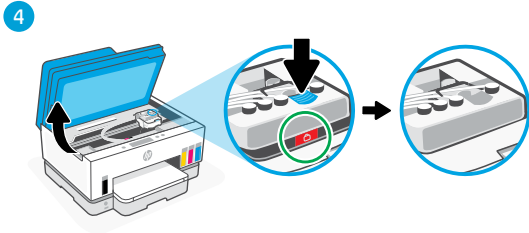
2. 抬起墨水检修门。拉动灰色耳片（朝打印机前面），然后抬起打印头盖，直至看见红色标签。关闭墨水检修门。



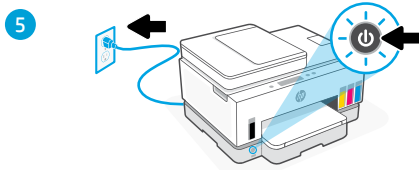
3. 将打印机打包（如适用）。移动打印机时，使打印机保持水平状态，防止墨水泄漏。



4. 打开打印机包装后，按下打印头盖以进行关闭。确保正确关闭打印头盖。



5. 连接电源线并打开打印机。



[hp.com/support/transportsmarttank](https://hp.com/support/transportsmarttank)



## 帮助和支持

如需打印机故障排除和视频，请访问 HP 支持网站。输入您的型号名称以查找打印机。



[hp.com/support](https://hp.com/support)









---

© Copyright 2021 HP Development Company, L.P.

The Apple logo is a trademark of Apple Inc., registered in the U.S. and other countries.

App Store is a service mark of Apple Inc.

Google Play and the Google Play logo are trademarks of Google Inc.

Microsoft is a registered trademark of Microsoft Corporation in the United States and/or other countries.

All third party trademarks are the property of their respective owners

Printed in China

中国印刷

EN

ZHCN



4WF66-90045



## Free Manuals Download Website

<http://myh66.com>

<http://usermanuals.us>

<http://www.somanuals.com>

<http://www.4manuals.cc>

<http://www.manual-lib.com>

<http://www.404manual.com>

<http://www.luxmanual.com>

<http://aubethermostatmanual.com>

Golf course search by state

<http://golfingnear.com>

Email search by domain

<http://emailbydomain.com>

Auto manuals search

<http://auto.somanuals.com>

TV manuals search

<http://tv.somanuals.com>