

The RS-R30I is an iOS application to control the IC-R30 from your iOS device. These instructions show how to use the application. Refer to the IC-R30 BASIC MANUAL for the Bluetooth connection details.

Major functions

Single band display		✓
Dual band display		✓
VFO Mode	Setting a frequency	✓
	Selecting a receive mode	✓
	Duplex setting	✓
	Tone Setting	✓
	NV, ANL, AFC, VSC settings	✓
	TS setting	✓
Memory Mode	Display a memory channel	✓
	Writing a memory channel	N/A
Scan	Start/Stop scan	✓
	SKIP settings	✓
Adjusting VOL/SQL		✓
Recording		✓
ATT settings		✓
RF gain settings		✓

N/A: Not Applicable

System requirements

The following system is required to use the application. (As of September 2018)

Data device

iPhone or iPad with 64 bit CPU*.

* iPhone 5S or later, iPad Air, and so on.

Operating system

iOS version 9.0 or later

① Download the application from the App Store.

Receiver

IC-R30

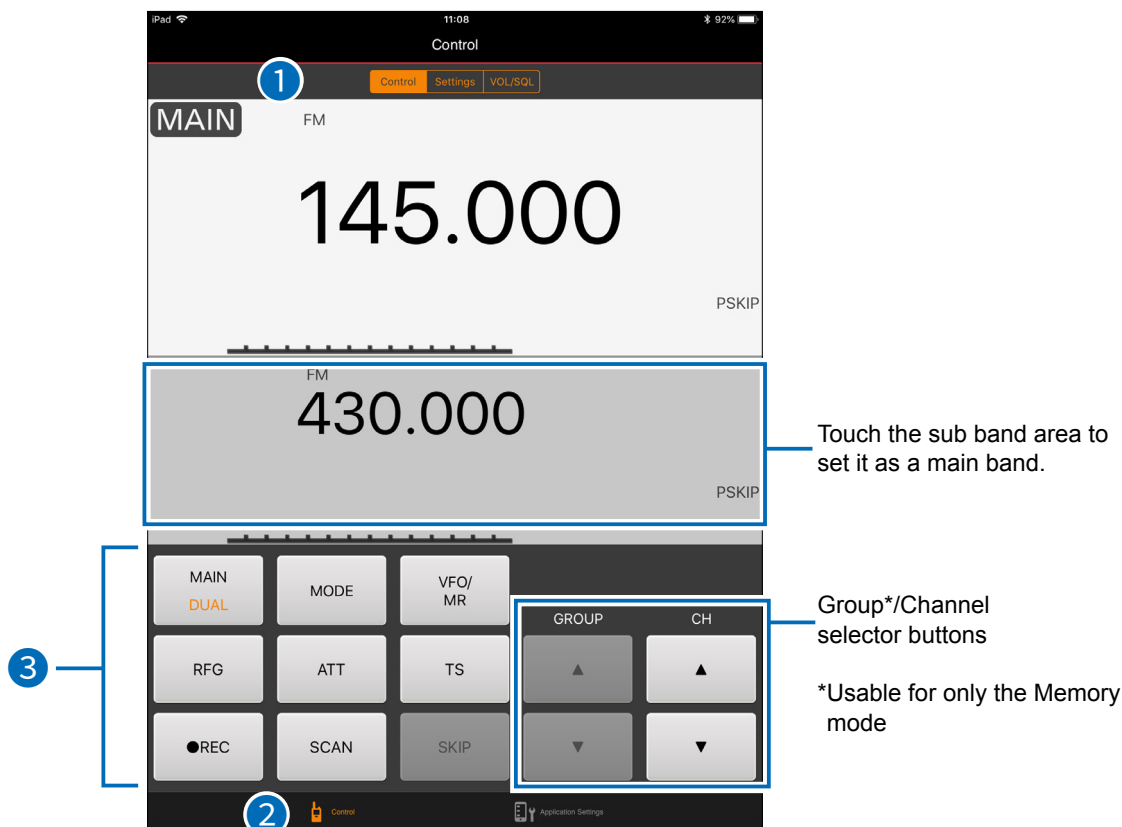
○ Disclaimer

- The application may not work, depending on the iOS version, installed applications, and so on.
- These Instructions are based on using iPad (iOS 11.4.1). Depending on the iOS version or setting, the indications or items may differ.
- The screen shots on these Instructions are just examples, so the contents may differ from the actual ones.

Operating notes

- Confirm the IC-R30's Serial port function is set to "CI-V (Echo Back OFF)"
([MENU] > Bluetooth Set > Data Device Set > **Serialport Function**)
- Pair the IC-R30 from the application. Refer to the IC-R30 ADVANCED MANUAL for details.
- Bluetooth LE is used to connect with the receiver, so there may be a time delay between the receiver's operation and the display on the data device. The time delay may happen while scanning, or using a Bluetooth headset.
- Bluetooth connection may be canceled when:
 - The device's screen is locked.
 - Wi-Fi is turned ON on your iOS device.
 - The application is in the Background mode.
 - The surrounding radio wave environments affect the connection.
 - Connecting or disconnecting a Bluetooth headset.
- When receiving pictures using D-STAR "FAST mode," the headset audio will be temporarily interrupted because of the receiver's Bluetooth unit limitations.
- The application does not output the audio received by the receiver.
- Restart the application when you edited the Memory channel on the IC-R30.
- The application supports only portrait orientation. It does not support Auto Rotate.

Function display



1 Tub bar

Touch to display the screen, as shown below.

“Control”

Displays the frequency or memory channel that the IC-R30 is receiving. You can change the receive mode, or start/stop scanning.

“Settings”

Displays functions usable in the current receiving mode. Refer to the IC-R30 ADVANCED MANUAL for each function details.

“VOL/SQL”

- Select whether or not to synchronize the A band and B band audio level.
- Adjust the volume and squelch.

2 Menu bar

“Control”

Touch to display the “Control,” “Settings,” or “VOL/SQL” screen.

“Application Settings”

Edit the application settings such as Bluetooth connection, CI-V address, and so on.

3 Touch buttons

Touch to use assigned functions, or edit the receiver settings, as shown below.

① The grayed out buttons are not usable.

[MAIN]/[DUAL]

- Touch to set the A or B band as the main band.
- Long touch to turn the Dualwatch function ON or OFF.

[MODE]

Touch to display the Receive mode options.

[VFO]/[MR]

Touch to select the VFO mode or Memory mode.

[RFG]

Touch to display the RF Gain options.

[ATT]

Touch to display the Attenuator options.

[TS]

Touch to display the Tuning step options.

[●REC]

Touch to start or stop voice recording on the IC-R30.

[SCAN]

Touch to start or stop scanning.

① Touch Channel selector buttons (▲/▼) to change the scanning direction.

[SKIP] (For only the Memory mode)

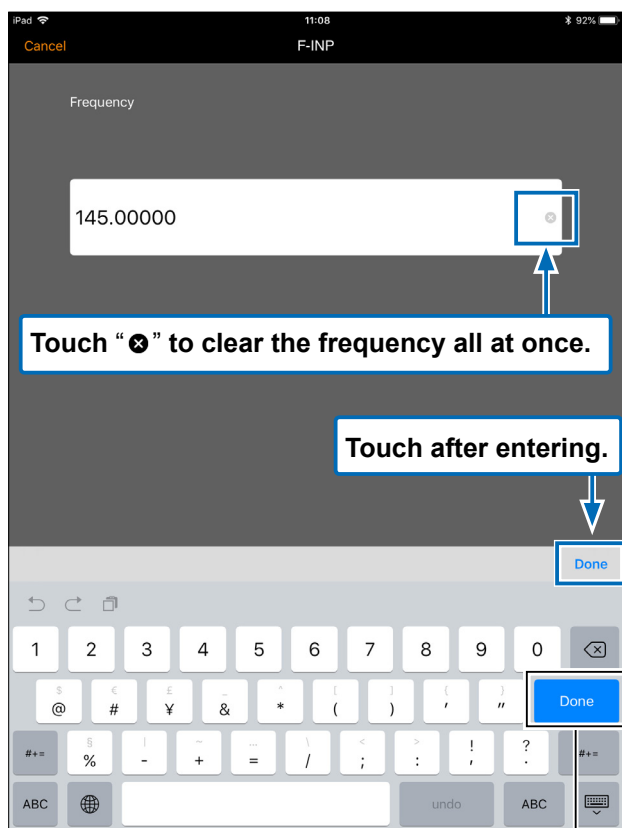
Touch to display the Skip/Program Skip options.

Basic operations

◇ Setting the frequency in the VFO mode

Use the Channel selector buttons, or set the frequency as shown below.

1. Touch the displayed frequency.
 - The Frequency entry screen is displayed.
2. Set the frequency using the software keyboard, and then touch “Done.”

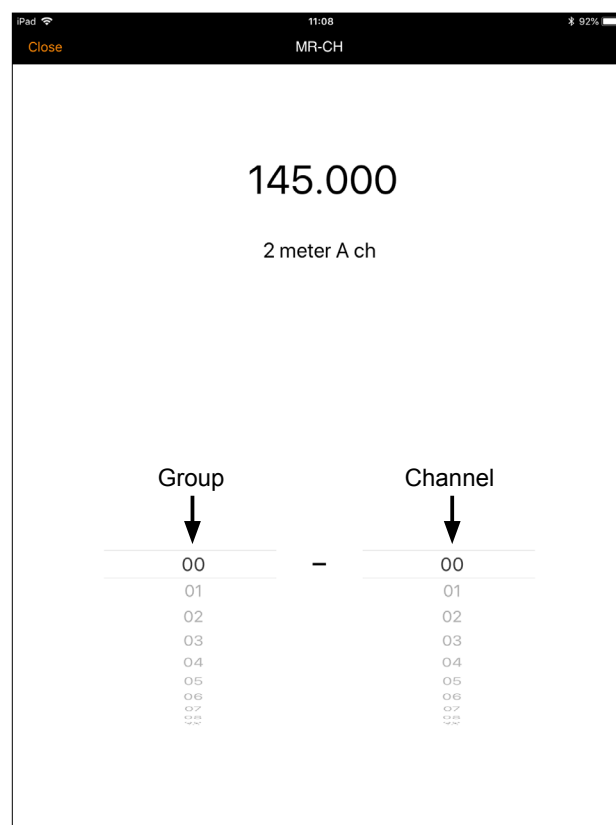


This key is not usable.

◇ Selecting a memory channel in the Memory mode.

Use the Group/Channel selector buttons, or select a channel as shown below.

1. Touch the displayed channel.
 - The Group/Channel selection screen is displayed.
 - ① The channel name is displayed, if it is entered.



2. Select a group and channel, and then touch “Close.”

Icom, Icom Inc. and the Icom logo are registered trademarks of Icom Incorporated (Japan) in Japan, the United States, the United Kingdom, Germany, France, Spain, Russia, Australia, New Zealand, and/or other countries.

iOS is a trademark or registered trademark of Cisco in the U.S. and other countries and is used under license.

Apple, iPad, iPhone, and iTunes are trademarks of Apple Inc., registered in the U.S. and other countries.

The iPhone trademark is used under license from AiPhone Co., Ltd.

The Bluetooth word mark and logos are registered trademarks owned by the Bluetooth SIG, Inc. and any use of such marks by Icom Inc. is under license. Other trademarks and trade names are those of their respective owners.

All other products or brands are registered trademarks or trademarks of their respective holders.

Free Manuals Download Website

<http://myh66.com>

<http://usermanuals.us>

<http://www.somanuals.com>

<http://www.4manuals.cc>

<http://www.manual-lib.com>

<http://www.404manual.com>

<http://www.luxmanual.com>

<http://aubethermostatmanual.com>

Golf course search by state

<http://golfingnear.com>

Email search by domain

<http://emailbydomain.com>

Auto manuals search

<http://auto.somanuals.com>

TV manuals search

<http://tv.somanuals.com>