

WIRELESS EARBUDS WITH **AMAZON ALEXA**

User's Guide for Model IAEPV38 v2181-01



iLIVE PLATINUM

SAFETY WARNINGS

- **WARNING:** Where the mains plug or appliance coupler is used as the disconnect device, such disconnect device shall remain readily operable.
- Risk of electric shock. Grounding continuity must be maintained.
- Lithium batteries, like all rechargeable batteries, are recyclable and should be recycled or disposed of according to state and local guidelines. They should never be disposed of in normal household waste, and they should never be incinerated, as they might explode. Contact your local government for disposal or recycling practices in your area.
- Only use the included power supply or a UL/ETL certified power supply of the same power output specifications.
- To avoid hearing damage, make sure that the volume on your music player is turned down before connecting your earbuds. After placing earbuds in/on your ears, gradually turn up the volume until you reach a comfortable listening level.



WARNING: This product can expose you to chemicals including lead, which is known to the State of California to cause cancer and birth defects or other reproductive harm. For more information go to: www.P65Warnings.ca.gov **This product meets and complies with all Federal regulations.**

FCC WARNINGS

WARNING: To assure continued operation, follow the attached installation instructions and use only shield cables when connecting to other devices. Changes or modifications not expressly approved by the party responsible for compliance could void the user's authority to operate the equipment.

NOTE: This equipment has been tested and found to comply with the limits for a Class B digital device, pursuant to Part 15 of the FCC Rules. These limits are designed to provide reasonable protection against harmful interference in a residential installation. This equipment generates, uses, and can radiate radio frequency energy and, if not installed and used in accordance with the instructions, may cause harmful interference to radio communications. However, there is no guarantee that interference will not occur in a particular installation. If this equipment does cause harmful interference to radio or television reception, which can be determined by turning the equipment off and on, the user is encouraged to try to correct the interference by one or more of the following measures:

- Reorient or relocate the receiving antenna.
- Increase the separation between the equipment and receiver.
- Connect the equipment into an outlet on a circuit different from that to which the receiver is connected.
- Consult the dealer or an experienced radio/TV technician for help.

TABLE OF CONTENTS

Introduction - 5

Features
Includes

Overview

Earbuds Controls & Inputs - 6
Control Functions - 7

Setup

1. Charging the Earbuds - 8
2. Download the Alexa App - 9
3. Download the iLive Smart Bluetooth App - 9
4. iLive Smart Bluetooth App - 10
5. Things to Try with Alexa - 13

Smart Bluetooth App

Home Screen - 14
Menu Screen - 15
Music Player Screen - 16

Other Ways to Play - 17

Bluetooth without the App

Troubleshooting - 18

Customer Support - 20

Contact Information
International Support
Warranty Information

INTRODUCTION

Take Alexa with you where ever you go with our Wireless Earbuds. Link Amazon Alexa with the earbuds and ask Alexa to play music*, read the news, check weather, control your smart home and more.

Features

- » Voice-activated Amazon Alexa cloud-based voice service*
- » Free iLive Smart Bluetooth app download
- » Bluetooth Wireless - range 33 ft.
- » Rubberized coating
- » Voice prompts
- » Built-in microphone for speakerphone functions
- » Built-in rechargeable battery with Micro-USB port for battery recharge
- » Battery life: approximately 3.5 hours

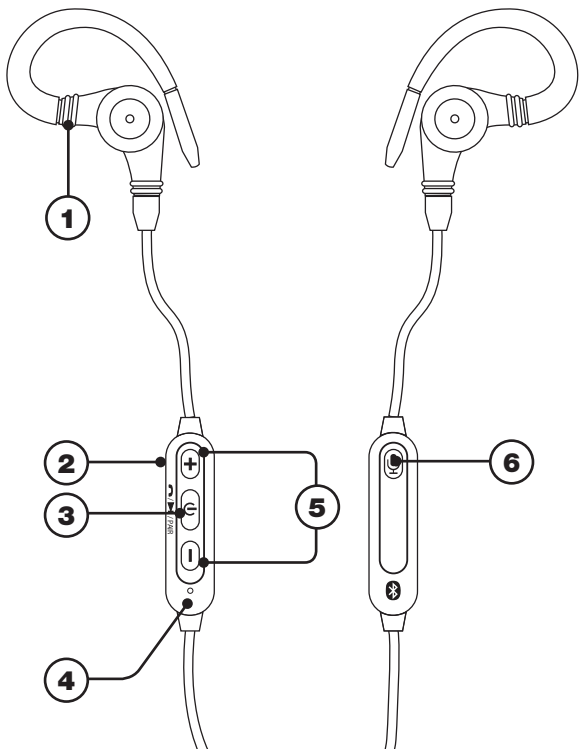
Includes

- » 3 sets of eartips: small, medium, and large
- » Micro-USB charging cable
- » Premium travel case
- » User's Guide
- » Warranty

*Free app download required. Mobile carrier/data charges may apply when Amazon Alexa not connected to a Wi-Fi network.
Specifications, software updates, and third party content are subject to change without prior notice.

OVERVIEW

Earbuds Controls & Inputs



1. Ear Hook

2. Micro-USB Charging Port (side)

3. Power/Pair/Play/Pause

4. Indicator LED & Microphone

5. Volume Up/Down

6. Alexa Button

Control Functions



- » **Power**
Press and hold to power ON and OFF.
- » **Play/Pause**
When music is playing, press to play or pause audio from a connected Bluetooth device.
- » **Speakerphone**
Press to answer or end a phone call.
- » **Pair**
Press to begin pairing to a Bluetooth device (see pg. 10 for pairing procedure).



- » **Volume**
Press to adjust the volume level.
Press and hold to skip audio tracks.



- » **Alexa Button**
Press to activate Amazon Alexa and say a command.

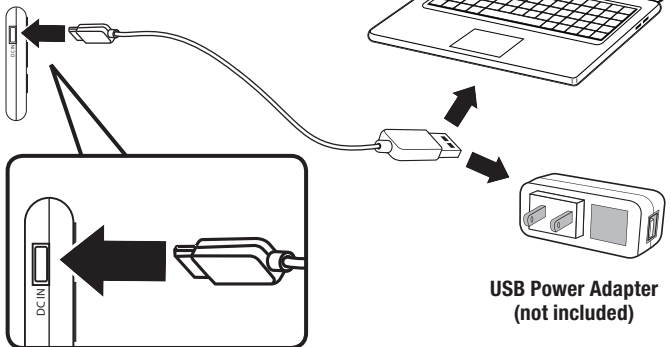
SETUP

1. Charging the Earbuds

Use a Micro-USB to USB cable (included) to connect the **DC IN (Micro-USB power input) on the earbuds** to the USB port on a powered on computer or USB power adapter (not included).

A fully charged battery will provide up to 3.5 hours of playtime. Battery life will improve at lower volume levels and decrease at higher volume levels.

Indicator light	Battery Status
Red light ON	Charging battery
Blue light ON	Charging complete
Red light flashing	Low battery, charge soon



2. Download the Alexa App



Download the Amazon Alexa app to your device by scanning the appropriate QR code below or search for the **Amazon Alexa app** in the Google Play™ Store, or Apple App Store®.

Android



Apple



The Amazon Alexa app connects your earbuds to Alexa's voice services. It's also where you can see an overview of your requests and manage your contacts, lists, news, music, and settings.

Once downloaded, open the Alexa app and log into your Amazon account. If you do not already have an Amazon account, choose "Create a new Amazon account" and enter the requested info. Once logged in, the app will prompt you for setup. You can add these details now by choosing "Get Started," or skip these steps and complete the process later. **You cannot use Alexa Voice Services if you aren't logged into an Amazon account.**

3. Download the iLive Smart Bluetooth App



The iLive Smart Bluetooth app connects your Amazon account and Amazon Alexa Voice Services with the earbuds. Download our free app to your device by scanning the QR codes below or search for the **iLive Smart Bluetooth** app in the Google Play™ Store, or Apple App Store®.

Android



Apple



Note: This app is designed for mobile devices only, such as smartphones or Wi-Fi enabled tablets. It is not available for use on regular desktop or laptop computers. If you are not connected to a Wi-Fi network, using Amazon Alexa may use your mobile carrier's data to fulfill requests and answer questions.

SETUP

4. iLive Smart Bluetooth App

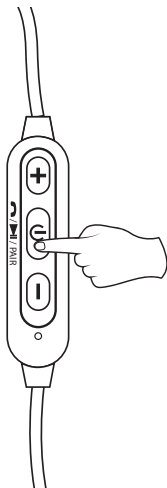
To use the earbuds with Amazon Alexa, your mobile device must both be connected to a Wi-Fi network and signed into the Amazon Alexa app. The iLive Smart Bluetooth app uses a Bluetooth connection with your device to access Wi-Fi and Alexa. The app will guide you through the connection process, just follow the on-screen instructions.

After the initial Bluetooth connection, the earbuds will automatically have access to Amazon Alexa, as long as your device is signed in to the Amazon Alexa app.

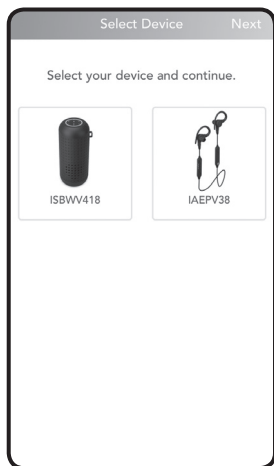
Initial App Connection

1. Beginning with the earbuds off, press and hold the **Power** button for 5 seconds to power on the earbuds and begin pairing Bluetooth. Be sure to press and hold until you see the LED indicator flash red and blue and you hear a voice prompt from the earbuds. (*Image A, below*).
2. Open the app and select **IAEPV38**, then begin following the on screen instructions (*Image B, below*).

A.

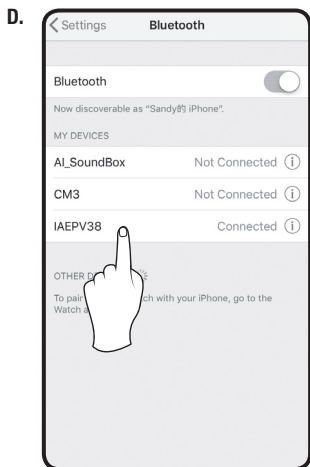
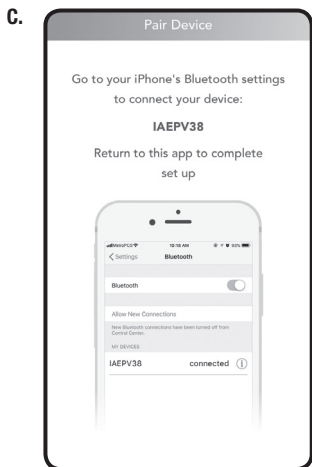


B.



3. On your Bluetooth device, open the Bluetooth Settings and select **IAEPV38** from the list of available devices. *It may take a moment before your device detects the earbuds and is available in the list. When pairing, remain within 3 ft. of your device. You may also need to scan for Bluetooth devices manually from your mobile device (Image D, below).*
4. When successfully paired, the **Mode/Connection LED** on the earbuds will flash blue twice every 5 seconds and a voice prompt will announce the connection. Audio from the connected device will now be played through the earbuds.

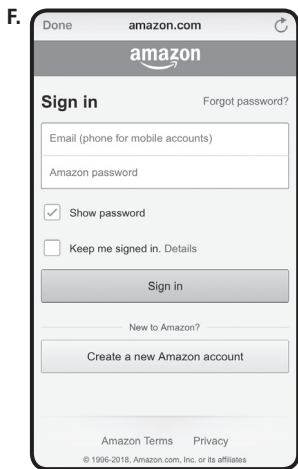
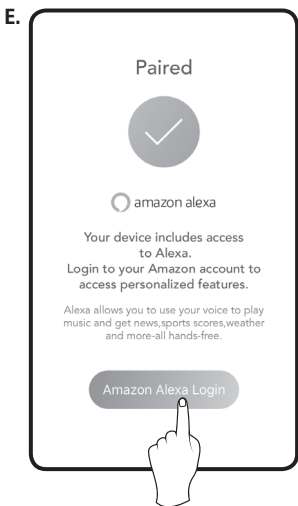
Setup instructions continued on the next page.



SETUP

Initial App Connection (continued)

5. Return to the iLive Smart Bluetooth app. After a few moments, the app should automatically pair with your phone (*Image E, below*).
6. When the connection is complete, the app will prompt you to link the earbuds with the Amazon Alexa app on your device (*Image E, below*). **If you do not have the Amazon Alexa app on your device, refer to the instructions on pg. 9.**
7. Enter your Amazon account information and sign in (*Image F, below*).
8. The Amazon Alexa app will show you some examples to try out. Press “Done” to finish setup and begin using your earbuds (*Image G, right*).




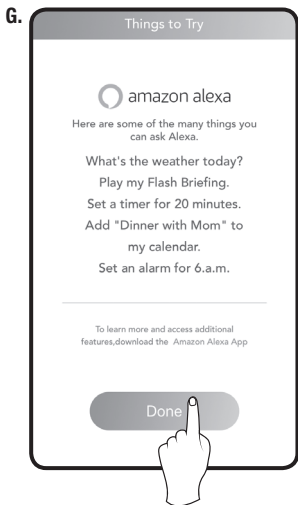
5. Things to Try with Alexa

Now that you're connected, press the  button to try interacting with Alexa.

Here are some things to try:

- » "Tell me a joke."
- » "What's in the news?"
- » "Add apples to my shopping list."
- » "What can you do?"

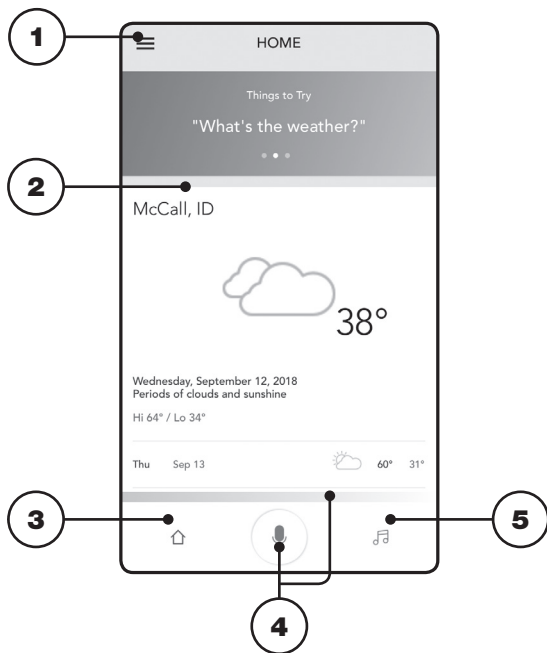
Note: Most Alexa devices work by listening for the "Alexa" wake word to activate Alexa and respond to your queries. Due to the unique nature of this product and their intended use, this feature is not enabled for these earbuds. To make use of Alexa, you must press the .



SMART BLUETOOTH APP

Home Screen

This is the default screen when you open the iLive Smart Bluetooth app.



1. Menu & Settings

View and adjust settings.

2. Information Area

Displays information from Alexa, for example weather, shopping list, etc.

3. Home

Press to go to the Home screen.

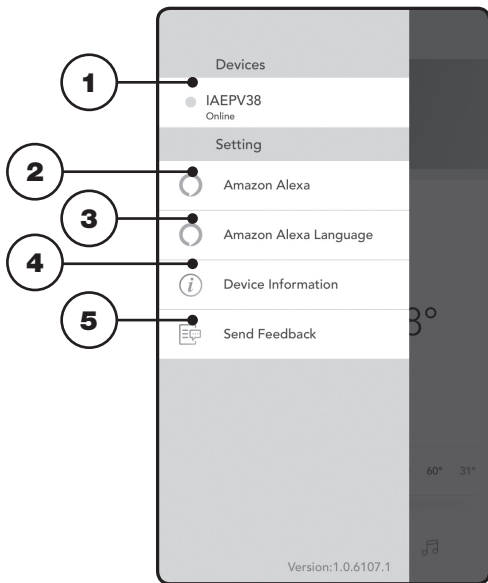
4. Alexa Button/Indicator

Press to activate Alexa and ask her a question.

5. Music

Press to go to the Music player.

Menu Screen



1. Devices

Linked devices shown here.

2. Alexa Account

Sign in or out of Amazon Alexa.

3. Alexa Language

Press to change Alexa's interface language.

4. Device Information

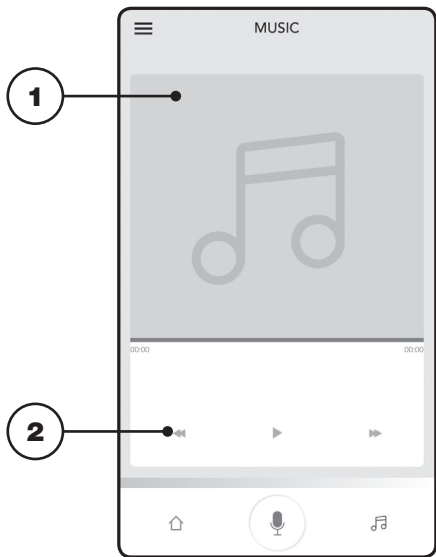
View and change the device name.

5. Send Feedback

Send feedback to the app developer.

SMART BLUETOOTH APP

Music Player Screen



1. Audio information

Artist and track info displayed here.

2. Play Controls

Use to play, pause, or skip audio.

OTHER WAYS TO PLAY

Bluetooth without the App

The earbuds can also function as a standard Bluetooth earbuds without using the app or Amazon Alexa Voice Services. Use a connected Bluetooth device to select and begin playing audio. Use the controls on the device or the earbuds to play, pause, or skip audio.

TROUBLESHOOTING

PROBLEM	POSSIBLE SOLUTION
Unit will not power on	<ul style="list-style-type: none">» Make sure the earbuds' battery is charged. Recharge if needed.
Audio distortion	<ul style="list-style-type: none">» Volume on the earbuds or connected Bluetooth device may be too high. Reduce the volume of one or both of the devices.
Bluetooth won't play or fails to connect	<ul style="list-style-type: none">» Make sure the volume on your Bluetooth device is turned up to an audible level.» Make sure the earbuds' battery is charged and is powered on.» Make sure both the earbuds and your device are in Bluetooth mode.» Stay within 3 ft. of the earbuds when pairing.» Stay within 33 ft. of the earbuds when paired.
Amazon Alexa not responding	<ul style="list-style-type: none">» Be sure the connected Bluetooth device is connected to a Wi-Fi network or mobile data.» Be sure the connected Bluetooth device has the Amazon Alexa app and is logged into your Amazon account.» Be sure the Wi-Fi network or router is functioning normally. Restart if needed.
White noise/Earbuds will not function properly	<ul style="list-style-type: none">» Power the earbuds OFF, then ON again.

CUSTOMER SUPPORT

Contact Information

Website: www.iLiveElectronics.com
Email Support: prodinfo@dpiinc.com
Email Parts: partsinfo@dpiinc.com
Phone Support: 1-888-999-4215

Warranty Information

For Warranty Information and the most up-to-date version of this User's Guide, go to **www.iLiveElectronics.com**.

International Support

To download this User's Guide in English, Spanish, or French, or to get answers to frequently asked questions, visit the support section at: **www.iLiveElectronics.com**

Para descargar este Manual del Usuario en inglés, español y francés, o para obtener respuestas a preguntas frecuentes, visite la sección de apoyo en: **www.iLiveElectronics.com**

Pour télécharger ce guide de l'utilisateur en anglais, espagnol ou français, ou pour obtenir des réponses à des questions fréquemment posées, consultez la rubrique: **www.iLiveElectronics.com**



***Protect for Today
Sustain for Tomorrow***

Copyright © 2018 Digital Products International (DPI, Inc.)
Amazon, Alexa and all related logos are trademarks of Amazon.com, Inc. or its affiliates.
All other trademarks appearing herein are the property of their respective owners.

Free Manuals Download Website

<http://myh66.com>

<http://usermanuals.us>

<http://www.somanuals.com>

<http://www.4manuals.cc>

<http://www.manual-lib.com>

<http://www.404manual.com>

<http://www.luxmanual.com>

<http://aubethermostatmanual.com>

Golf course search by state

<http://golfingnear.com>

Email search by domain

<http://emailbydomain.com>

Auto manuals search

<http://auto.somanuals.com>

TV manuals search

<http://tv.somanuals.com>