

QUICK START GUIDE

068021-B400 - AR321, Kubota® D1105-E4B, 3WD

Series ER

STARTING THE ENGINE

SEAT ADJUSTMENT

CONTROLS

DRIVING

MOWING

VISUAL DISPLAY

Refer To The Safety, Operation And Maintenance Manual For Full Operating Instructions.

Jacobsen reserves the right to make design changes without obligation to make these changes on units previously sold and the information contained in this manual is subject to change without notice.

STARTING THE ENGINE

BEFORE YOU OPERATE THIS MACHINE FOR THE FIRST TIME.

- Check and adjust tyre pressure, if necessary, see Safety, Operation and Maintenance manual.
- If necessary, add diesel fuel to tank.
- Check engine oil and if necessary fill.
- Check the radiator coolant and fill if necessary (Water with 50% anti-freeze).

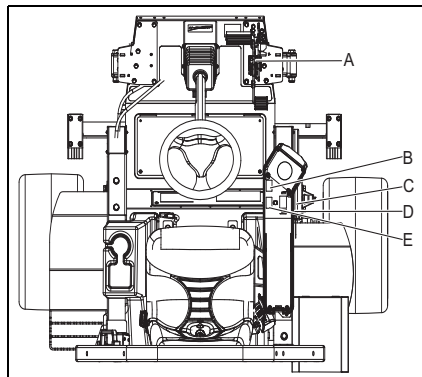
HOW TO START THE ENGINE

The following procedure is for cold engines.

1. Make sure the forward / reverse pedal (A) is in the neutral position. The cutter switch (B) is off and the throttle (C) is in the centre position.
2. Turn the ignition switch (D) to the right and hold until the engine starts (approximately 5-10 seconds.)
3. The glow plugs operate automatically. The time taken for the engine to start, depends on the temperature of the coolant
4. When the engine starts, release the key immediately. The key returns to the RUN position.
5. If the engine does not start, return the key to the OFF position and try again.

NOTES

- If the engine does not start after two tries, wait 20 seconds and try again.



NOTES CONTINUED

- The starter motor must not be run continuously for longer than 30 seconds or the starter motor can fail.
- If the yellow LED on the display flash when you start one of the safety interlock switches was not set correctly.

HOW TO STOP THE ENGINE

1. Disengage drive to the cutting units with the cutter switch (B).
2. Return the forward / reverse pedal (A) to the neutral position.
3. Set the parking brake by pressing the parking brake switch (E).
4. Move the throttle control lever to the SLOW position.
5. Turn the ignition key (D) to the OFF position.

SEAT ADJUSTMENT

SEAT (MILSCO V-5300)

To get a good seat position to operate the machine you need to adjust the leg reach, the backrest angle and the operator weight.

A. FORWARD AND AFT ADJUSTMENT

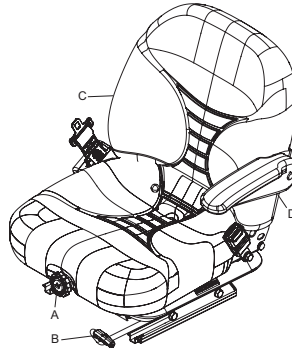
The position of the adjusting lever (A) is on the right hand side of the seat below the seat cushion. When moved up, the seat may be moved backward and forward. When, in the correct position release the lever into one of the preset positions.

B. BACKREST ADJUSTMENT

The position of the release lever (B) is on the left hand side of the seat. While, sitting on the seat pull the release lever up to release the backrest. (The backrest is spring loaded to fold forward to the seat Cushion.) Move back to get the correct position. Release the lever to engage in one of the preset positions.

C. WEIGHT ADJUSTMENT

The position of the operator weight adjust lever (C) is on the front of the seat. To change the operator weight setting pull the lever out. When sitting on the seat rotate the lever until your weight (kg) is shown in the window.

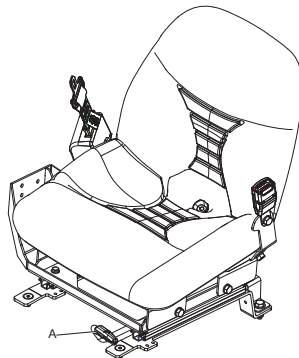


SEAT (MILSCO V-2853)

To get a good seat position to operate the machine you need to adjust the leg reach.

A. FORWARD AND AFT ADJUSTMENT

The position of the adjusting lever (A) is on the right hand side of the seat below the seat cushion. When moved up, the seat may be moved backward and forward. When, in the correct position release the lever into one of the preset positions.



WARNING

Operator weight adjustment must be set to ensure the OPC operates correctly. The parking brake may automatically be applied if this operation is not carried out correctly.

D. ARM REST ADJUSTMENT

Raise the arm rest to the vertical position and rotate the adjustable stop to achieve a comfortable position.

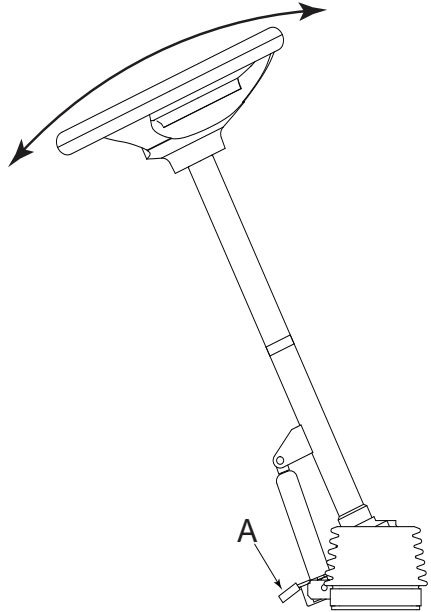
NOTES

The seat is fitted with a microswitch to sense the operator in the seat.

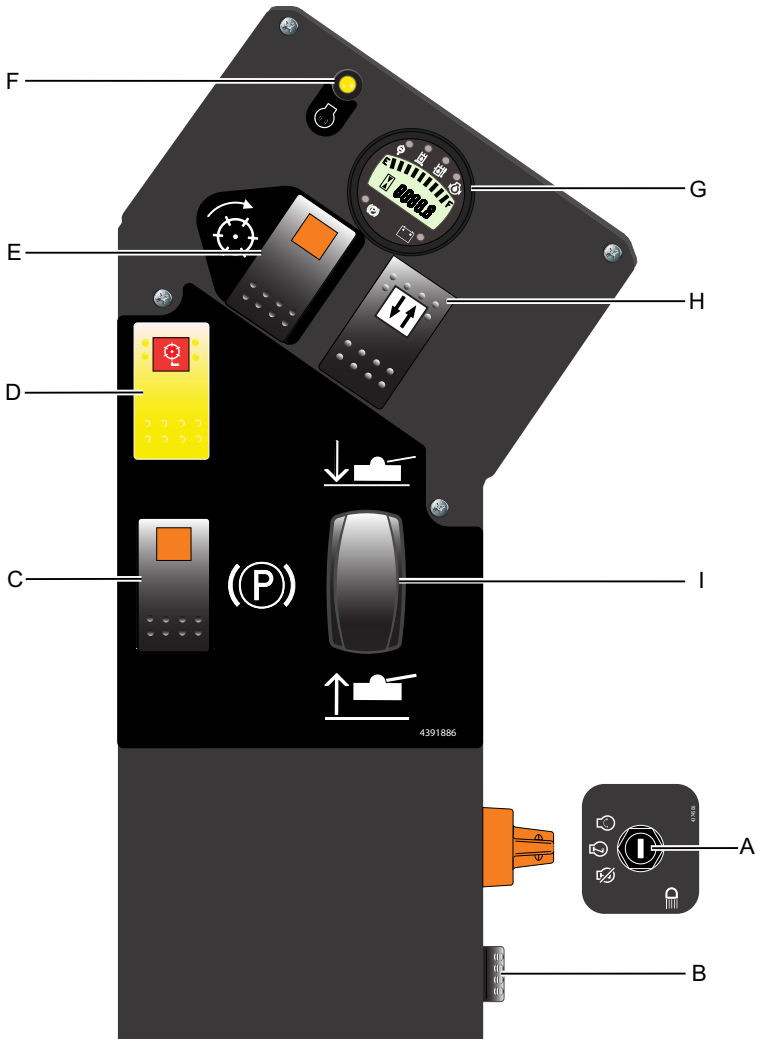
Always wear the seat belt when a ROPS frame is installed.

STEERING WHEEL ADJUSTMENT**STEERING TILT CONTROL**

When the operators seat is in the correct position to operate the traction pedal comfortably. Push the small foot pedal (A) at the base of the steering column. Tilt the column backward or forward to the correct position. Release the small foot pedal to lock the steering column in position.



CONTROLS

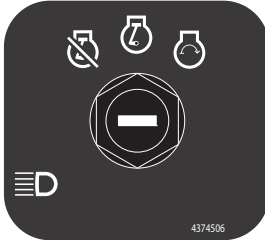


- A. Key Switch
- B. Light Switch (Optional)
- C. Parking Brake Switch
- D. Mow Switch
- E. Back Lap Switch

- F. Glow Plug Indicator
- G. Multi Function Gauge
- H. Weight Transfer Switch
- I. Lift/Lower Switch

CONTROLS

STARTER KEY SWITCH



Turn the starter key to the right to start the engine. Release the key to return automatically to the 'on' position for normal operation.

NOTE: Before the engine starts, the glow plugs automatically preheat.

LIGHT SWITCH



Turns the work lights "On" and "Off".

Push the top of the switch to turn the lights ON.

Push the bottom of the switch to turn the lights OFF.

PARKING BRAKE SWITCH



Move the orange button back and press the switch to engage the parking brake.

PARKING BRAKE SWITCH CONTINUED

Move the orange button back and press the switch to engage the parking brake.

When the engine is stopped, the parking brake is applied.

To release the parking brake, press the opposite end of the switch.

The parking brake icon is displayed on the multi function gauge screen when engaged.

DO NOT apply the brake while the machine is in motion.

MOW SWITCH



The mow switch engages the cutter rotation.

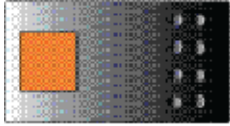
To cut grass, push the front of the "Mow Switch" (Red Lens End) and press the top end of the "Lift/Lower Switch" to lower the cutting units. When engaged the red lens will illuminate.

To stop drive to the cutting units, push the bottom of the rocker switch (Opposite end to the red lens).

Note: When the cutting units are raised above 400mm from the ground or when the operator leaves the seat, blade rotation is stopped.

CONTROLS

BACKLAP SWITCH



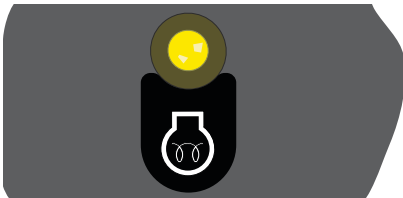
Switches the direction of cylinder rotation to allow backlapping.

By sliding back the orange button on the rocker switch on the control panel and pressing the switch backlap is engaged.

When backlapping is complete return switch to normal operating position and the lock will engage

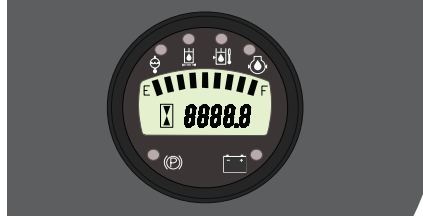
NOTE: Ensure “Parking Brake” is applied before turning on Backlap.

GLOW PLUG INDICATOR



The L.E.D will illuminate when the starter key is turned to the “Start Position” for six seconds whilst the engine pre-heats until the engine is running.

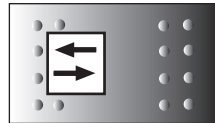
MULTI FUNCTION GAUGE



The Multi Function Gauge is activated when the key switch is turned to the “On” position. The features available are listed below.

1. Machine Hours.
2. Blocked Hydraulic Filter.
3. Engine Temperature Warning Lamp.
4. Engine Oil Pressure Warning Lamp.
5. Battery Charge Warning Lamp.
6. Parking Brake.

WEIGHT TRANSFER SWITCH



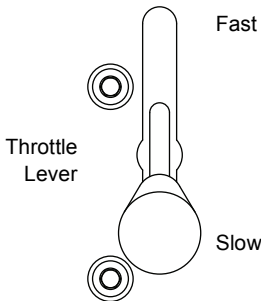
This switch allows the operator to transfer weight off the cutting units onto the machine. This gives the machine better traction.

Press the rocker switch to transfer weight off the cutting units, the warning lamp will illuminate. When the switch is in the off position weight is transferred back onto the units, the warning lamp will go out.

CONTROLS**LIFT/LOWER SWITCH**

The lift/low switch controls the cutting units lift and lower.

The lift/low switch operates in Single-Touch mode. Push the top of the lift/low switch to lower the cutting units or press the bottom of the lift/low switch to lift the cutting units into cross cut. To lift the units into the transport position press and hold the bottom of the lift/low switch.

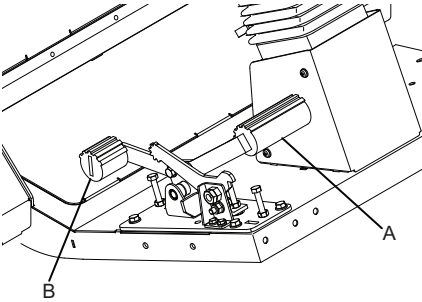
THROTTLE LEVER

The throttle lever controls the engine speed. Always operate the mower at full throttle during normal operation.

- Push the throttle lever toward the front of the mower to increase engine speed.
- Pull the throttle lever toward the rear of the mower to decrease engine speed.

DRIVING

HOW TO DRIVE



- Move the throttle control lever to the FAST position.
 - Release the brake - Make sure the parking brake is completely released before you move in a forward or reverse direction.
 - Driving forward - Carefully press the top (A) of the Forward / Reverse foot pedal to reach the ground speed that you need.
 - Driving in reverse - Carefully press the bottom (B) of the Forward / Reverse foot pedal to reach the ground speed that you need.
 - To stop - carefully return the Forward / Reverse foot pedal to the neutral position then decrease throttle.
- To stop the vehicle on a slope it may be necessary to apply traction in the opposite direction to which the machine is trying to roll.

HOW TO STOP

- Disengage the drive to the cutting units with the cutting unit switch.
- Return the forward / reverse foot pedal to the Neutral position.
- Set the parking brake.
- Move the throttle control lever to the SLOW position.
- Turn the ignition key to the OFF position.

NOTICE

- Use complete foot to operate both forward and reverse.
- Always operate the traction pedal carefully.
- Do not move the pedal from forward to reverse quickly.
- Allow the machine to come to a stop before you engage reverse drive.
- When the parking brake is applied, DO NOT press the traction pedal.

MOWING**HOW TO MOW**

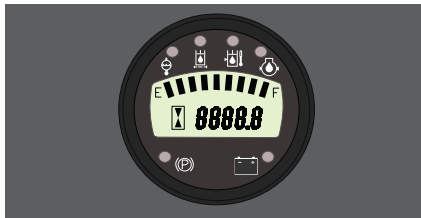
- Set the mow / transport speed selector to the mow position, this will set the maximum speed.
- Lower the cutting units with the joystick.
- To engage the cutting mechanism, press the lower half of cutting unit switch, found on the control panel.
- Release the parking brake and drive in a forward direction.

NOTICE

Always set the throttle to the maximum engine speed. If you find wet or thick grass difficult to cut, decrease the forward speed to increase hydraulic pressure to the cutting motors.

MULTIFUNCTION GAUGE

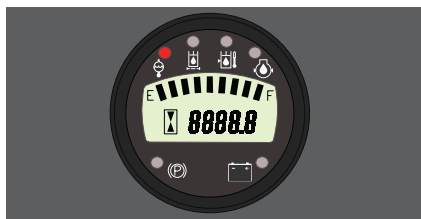
START UP



The Multi Function Gauge is activated when the key switch is turned to the "On" position. The features available are listed below.

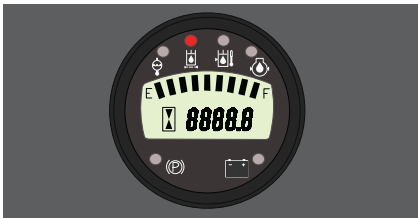
- Machine Hours.
- Blocked Hydraulic Filter.
- Engine Temperature Warning Lamp.
- Engine Oil Pressure Warning Lamp.
- Battery Charge Warning Lamp.
- Parking Brake.

HYDRAULIC OIL TEMPERATURE



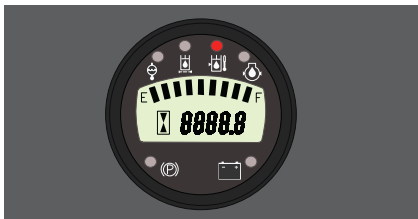
Hydraulic temperature - This feature is unavailable.

BLOCKED HYDRAULIC FILTER



Hydraulic temperature - This feature is unavailable.

ENGINE TEMPERATURE WARNING LAMP

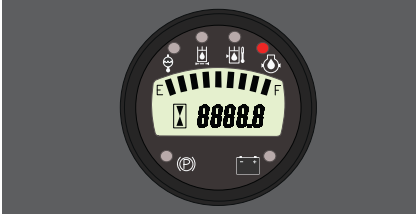


Colour red, on when the engine coolant temperature reaches a preset level (Note: an audible alarm is also activated).

If the lamp illuminates and alarm sounds bring the machine to a safe stop, disengage the cutting units, apply the parking brake and stop the engine.

MULTIFUNCTION GAUGE

ENGINE OIL PRESSURE WARNING LAMP



Colour red, on when the ignition is switched on, and will go out once the engine has started. If the light comes on while the engine is running - **STOP AS QUICKLY AS POSSIBLE AND TURN OFF THE ENGINE**, as this indicates that the engine oil pressure is too low.

Check the level of oil in the sump and top up as necessary. Check the oil pressure sender switch. Continued operation may cause extensive damage to the engine.

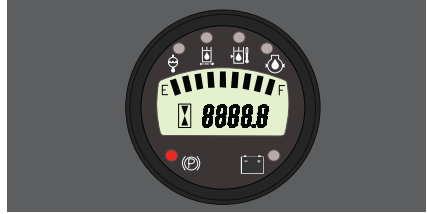
BATTERY CHARGE WARNING LAMP



Colour red, on when ignition is switched on and will go out when the engine is started. The light will illuminate when the battery voltage drops below 11.5 Volts for one minute.

If the light comes on while the engine is running, the fan belt may be slipping or broken or a fault within the electrical system is indicated and should be investigated. **STOP IMMEDIATELY.**

PARKING BRAKE



When the engine is running the parking brake is applied by sliding back the orange button on the rocker and pressing the switch on the control panel.

When the engine is switched off the parking brake is automatically applied.

To release the parking brake press the opposite end of the rocker switch.

Never apply the parking brake whilst the machine is moving.



Europe & Rest of The World Except North & South America

Ransomes Jacobsen Limited
West Road, Ransomes Europark, Ipswich, IP3 9TT
English Company Registration No. 1070731
www.ransomesjacobsen.com

North & South America

Jacobsen
1451 Marvin Griffin Road, Augusta,
Georgia 30906 - 3852, USA
www.Jacobsen.com

Free Manuals Download Website

<http://myh66.com>

<http://usermanuals.us>

<http://www.somanuals.com>

<http://www.4manuals.cc>

<http://www.manual-lib.com>

<http://www.404manual.com>

<http://www.luxmanual.com>

<http://aubethermostatmanual.com>

Golf course search by state

<http://golfingnear.com>

Email search by domain

<http://emailbydomain.com>

Auto manuals search

<http://auto.somanuals.com>

TV manuals search

<http://tv.somanuals.com>