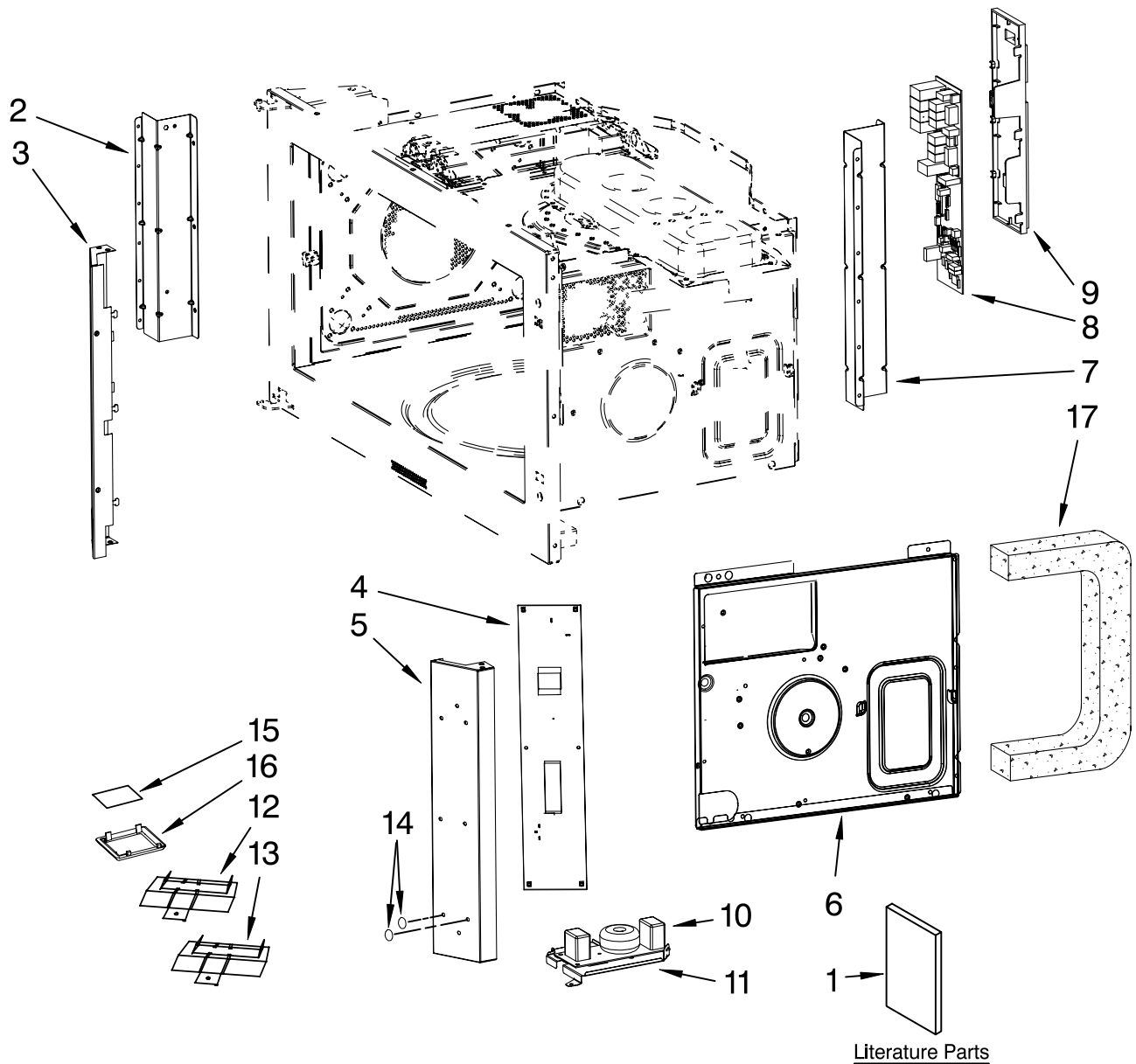


CONTROL BOARD PARTS

For Models: KHMS2056SWH0, KHMS2056SBL0, KHMS2056SSS0
(White) (Black) (Stainless Steel)

MICROWAVE
HOOD
COMBINATION

KitchenAid®



Literature Parts

Illus. No.	Part No.	DESCRIPTION
1	W10117076	Literature Parts Use & Care Guide
	8205288	Tech Sheet
	8205744	Quick Reference
2	8206039	Support, Cavity (Left)
3	8206040	Plate, Protection (Left)

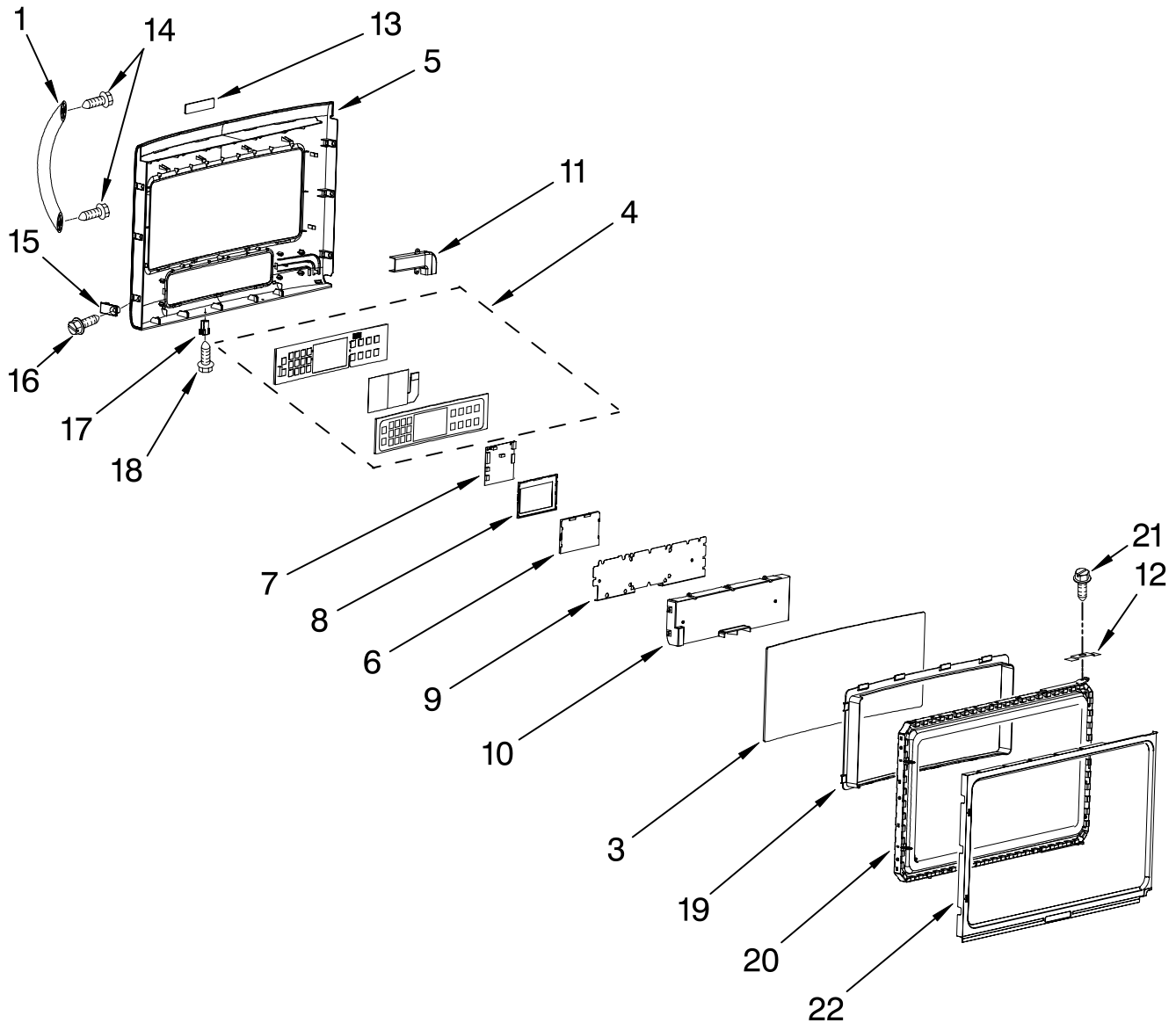
Illus. No.	Part No.	DESCRIPTION
4	8206608	Control Board, (Relay)
5	8206061	Plate, Protection (Right)
6	W10113785	Plate, Chassis
7	8206065	Support, Cavity (Right)
8	8206493	Board, Relay
9	8206053	Holder, Microcomputer

Illus. No.	Part No.	DESCRIPTION
10	8206062	AC Line Filter
11	8206060	Holder, Filter
12	W10113782	Resistor (50W)
13	W10113783	Resistor (25W)
14	W10113784	Spacer (6)
15	8169499	Glass, Lamp
16	8169646	Frame, Glass
17	W10143955	Seal, Foam

FOR ORDERING INFORMATION REFER TO PARTS PRICE LIST

DOOR PARTS

For Models: KHMS2056SWH0, KHMS2056SBL0, KHMS2056SSS0
(White) (Black) (Stainless Steel)



Illus. No.	Part No.	DESCRIPTION
1	8206501	Handle
	W10110267	White
	W10116265	Black
	W10116265	Stainless Steel
3	8206528	Outer Door Glass
4	8206635	Control Panel
5	8206518	Outer Door Frame
	8206519	White
	8206521	Black
	8206521	Stainless Steel
6	W10116269	LCD Frame

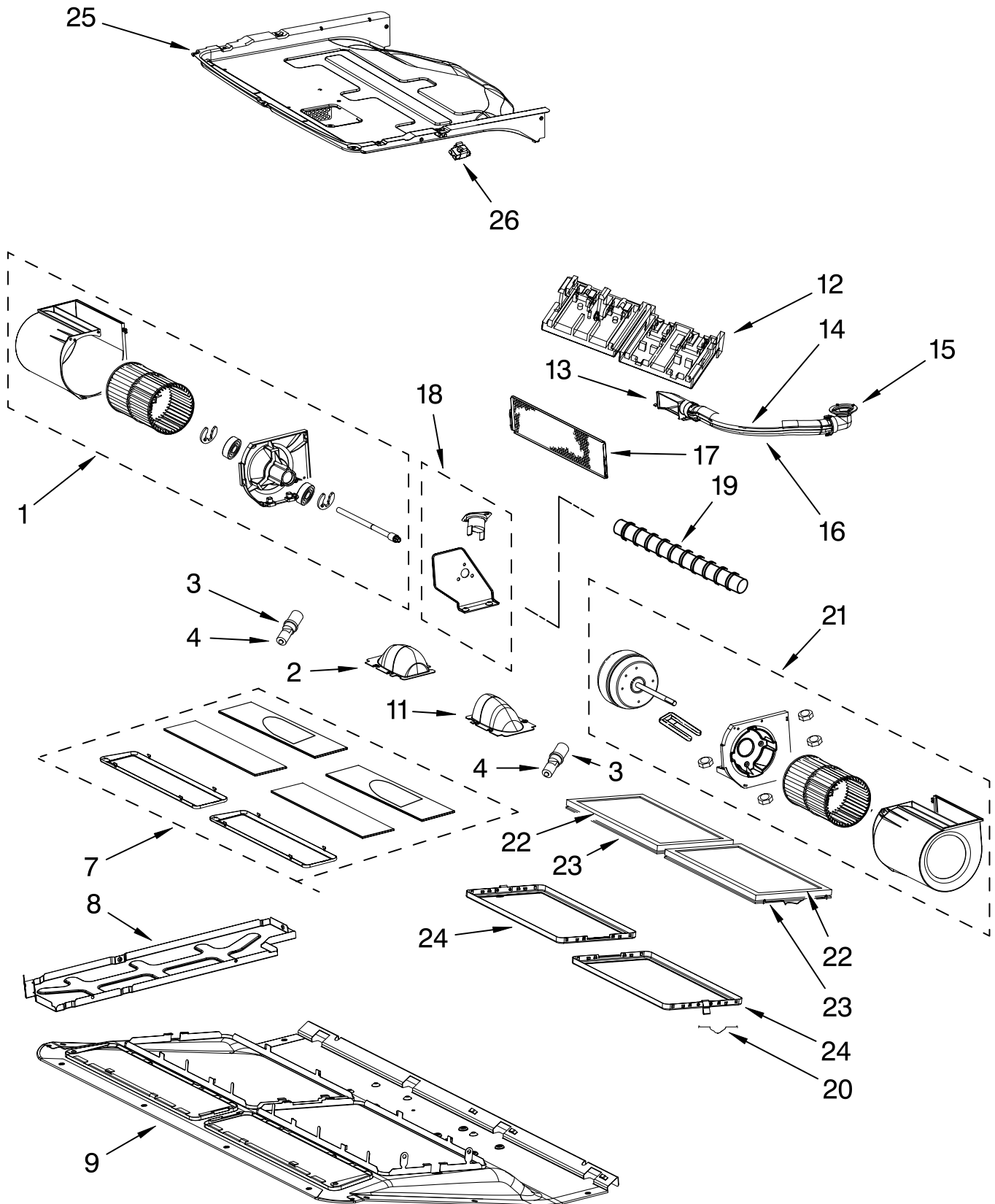
Illus. No.	Part No.	DESCRIPTION
7	W10143961	Board, User (Interface)
8	W10143962	LCD Module
9	8206511	Cntrl Panel Plate
10	8206512	Cntrl Panel Cover
11	8206527	Cable Cover, Door
12	W10143965	Clip, Hinge Screw
13		Logo
	8206514	White
	8206515	Black
	8206517	Stainless Steel
14	8206513	Screw (2)

Illus. No.	Part No.	DESCRIPTION
15		Spacer, Side (6)
	8206522	White
	8206523	Black
	8206525	Stainless Steel
16	8206215	Screw (6)
17	8206178	Spacer, Bottom (2)
18	8206179	Screw (2)
19	8206529	Cover, Choke
20	W10112215	Door Plate Assy
21	W10143963	Hinge Screw
22	W10143964	Dr Innr Frm Assy

FOR ORDERING INFORMATION REFER TO PARTS PRICE LIST

VENTILATION PARTS

For Models: KHMS2056SWH0, KHMS2056SBL0, KHMS2056SSS0
(White) (Black) (Stainless Steel)



FOR ORDERING INFORMATION REFER TO PARTS PRICE LIST

VENTILATION PARTS

For Models: KHMS2056SWH0, KHMS2056SBL0, KHMS2056SSS0
(White) (Black) (Stainless Steel)

Illus. No.	Part No.	DESCRIPTION
1	8206092	Housing, Blower (Left)
2	W10143957	Reflector, Lamp
3	8204670	Lamp (2)
4	W10143958	Socket, Lamp (2) (Left)
7		Frame, Glass
	W10113788	Left
	W10113789	Right
8	8206097	Plate, Separator (Left)
9	8206497	Plate, Bottom
11	W10143960	Reflector, Lamp
12	8206103	Cover, Terminal
13	8206104	Diffuser
14	8206105	Cover, Duct
15	8206106	Connector, Duct
16	8206107	Holder, Duct
17	8206498	Shield
18	8206212	Support & Base Thermostat Assy
19	8206263	Connector Shaft
20	8206499	Spring
21	8206112	Housing, Blower (Right)
22	W10120840	Filter, Charcoal
23	W10120839	Filter, Grease
24	W10113792	Spring, Hook
25	W10143951	Air Guide, Center Hood
26	W10110862	Mounting Nut (2)

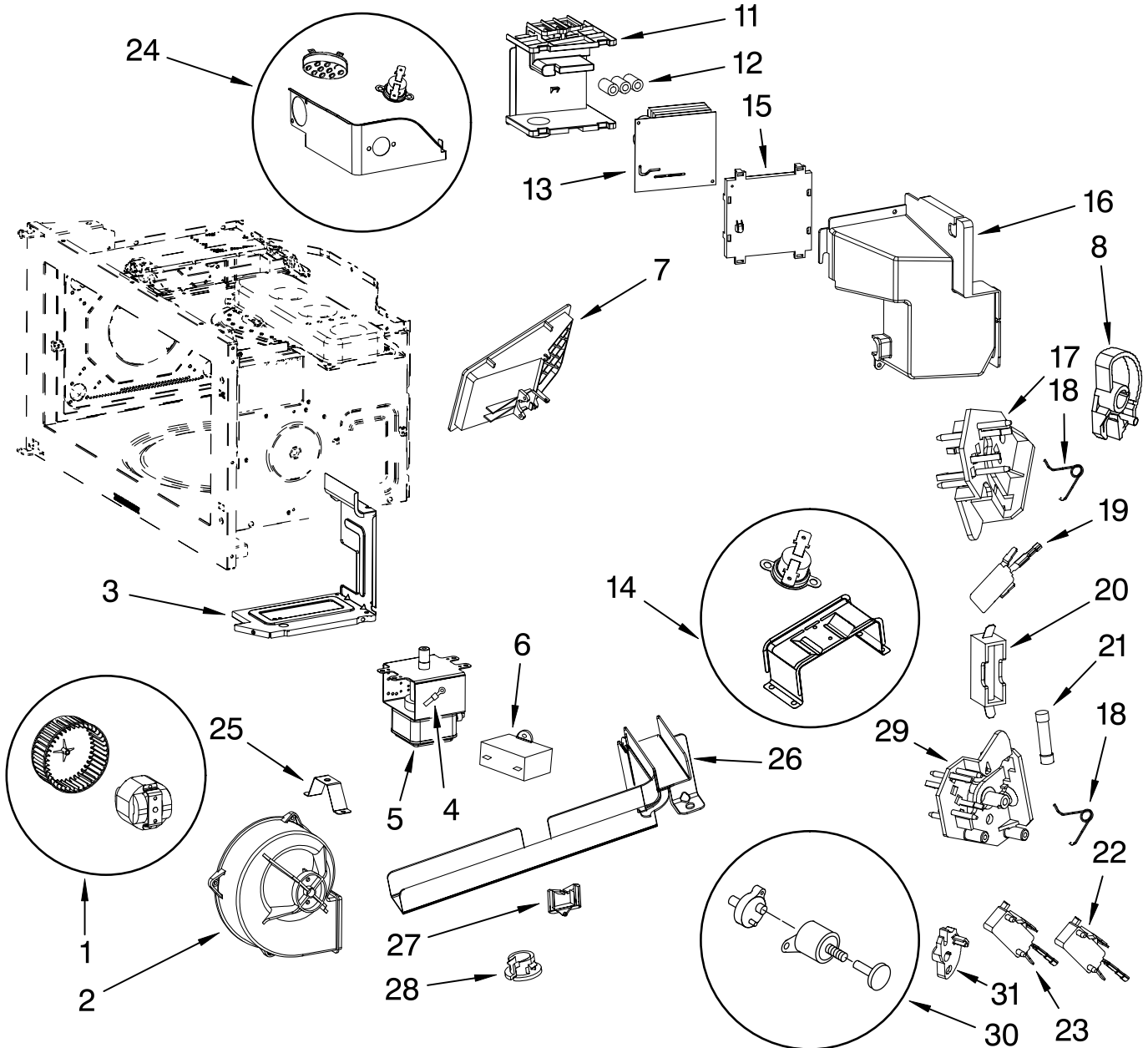
INTERIOR AND AIR FLOW PARTS

For Models: KHMS2056SWH0, KHMS2056SBL0, KHMS2056SSS0

(White)

(Black)

(Stainless Steel)



Illus. No.	Part No.	DESCRIPTION
1	8206075	Fan Motor Assy
2	8206076	Housing, Fan
3	8206077	Plate, Divider
4	8206078	Thermistor, Magnetron
5	8206079	Magnetron
6	8206080	Motor, Capacitor
7	8206081	Housing, Valve
8	W10113786	Cam Plate (Upper)
11	8206085	Cover, Inverter
12	8206086	Ferrite Ring
13	8206087	Inverter

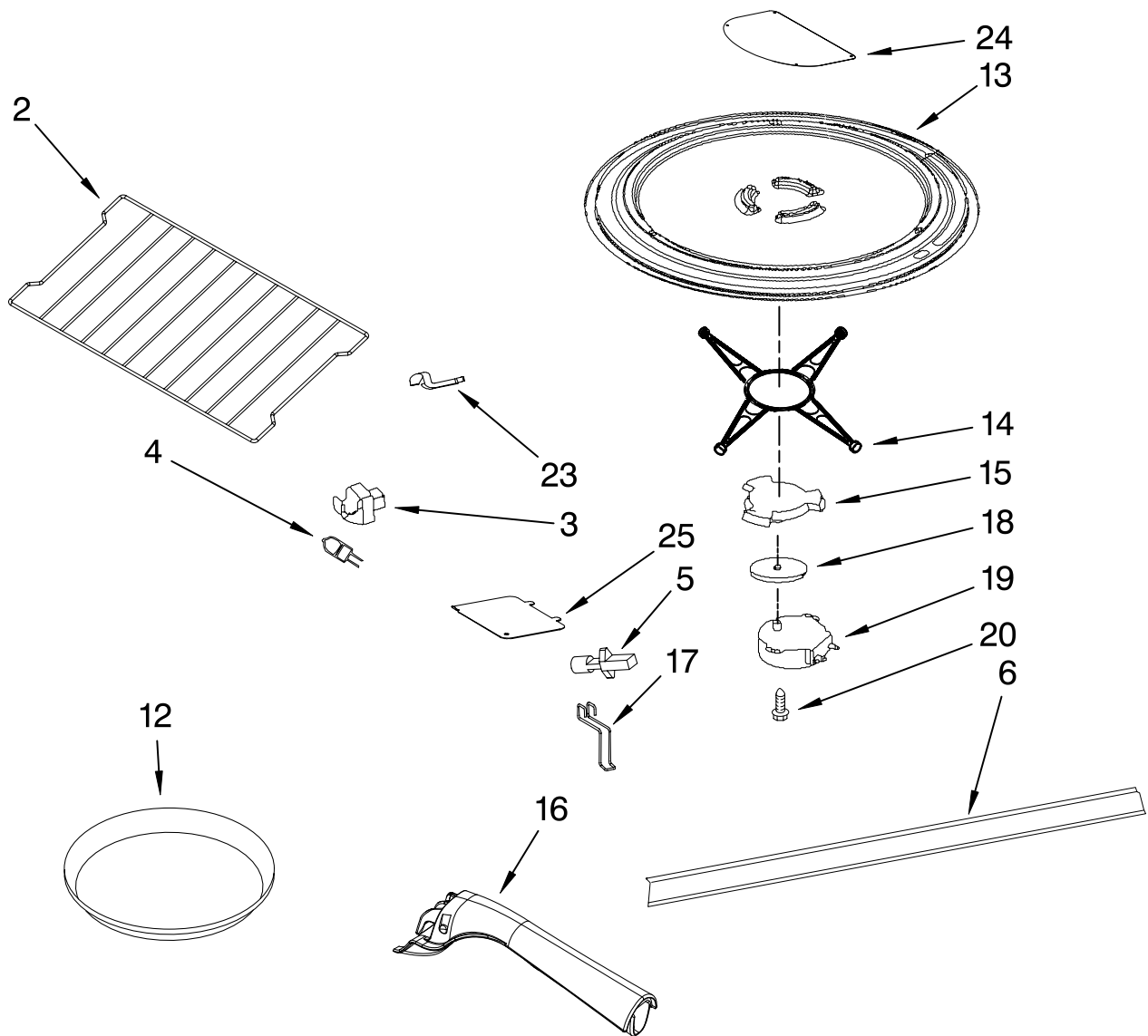
Illus. No.	Part No.	DESCRIPTION
14	8206035	Thermostat, Base Assembly
15	8206089	Holder, Inverter
16	8206494	Air Guide, Magnetron
17	W10143956	Support, Interlock
18	8206091	Spring, Interlock
19	8206345	Switch, Micro (Secondary)
20	8184312	Holder, Fuse
21	4393308	Fuse

Illus. No.	Part No.	DESCRIPTION
22	8206347	Switch, Micro (Monitor)
23	8206352	Switch, Micro (Primary)
24	8206026	Humidity Sensor & Thermostat Assy
25	8206031	Support, Air Guide
26	8206477	Protector, Wire
27	8206037	Clip, Saddle
28	8206038	Clip, Round
29	8206209	Support, Interlock
30	8206210	Piston Assembly
31	W10113787	Cam Plate (Lower)

FOR ORDERING INFORMATION REFER TO PARTS PRICE LIST

RACK AND TURNTABLE PARTS

For Models: KHMS2056SWH0, KHMS2056SBL0, KHMS2056SSS0
(White) (Black) (Stainless Steel)



Illus. No.	Part No.	DESCRIPTION
2	8206117	Rack
3	8206118	Hook, Rack (4)
4	8204670	Lamp, Cavity
5	W10113781	Holder, Lamp
6	8205980	Deflector, Air
12	8205996	Plate, Crisp

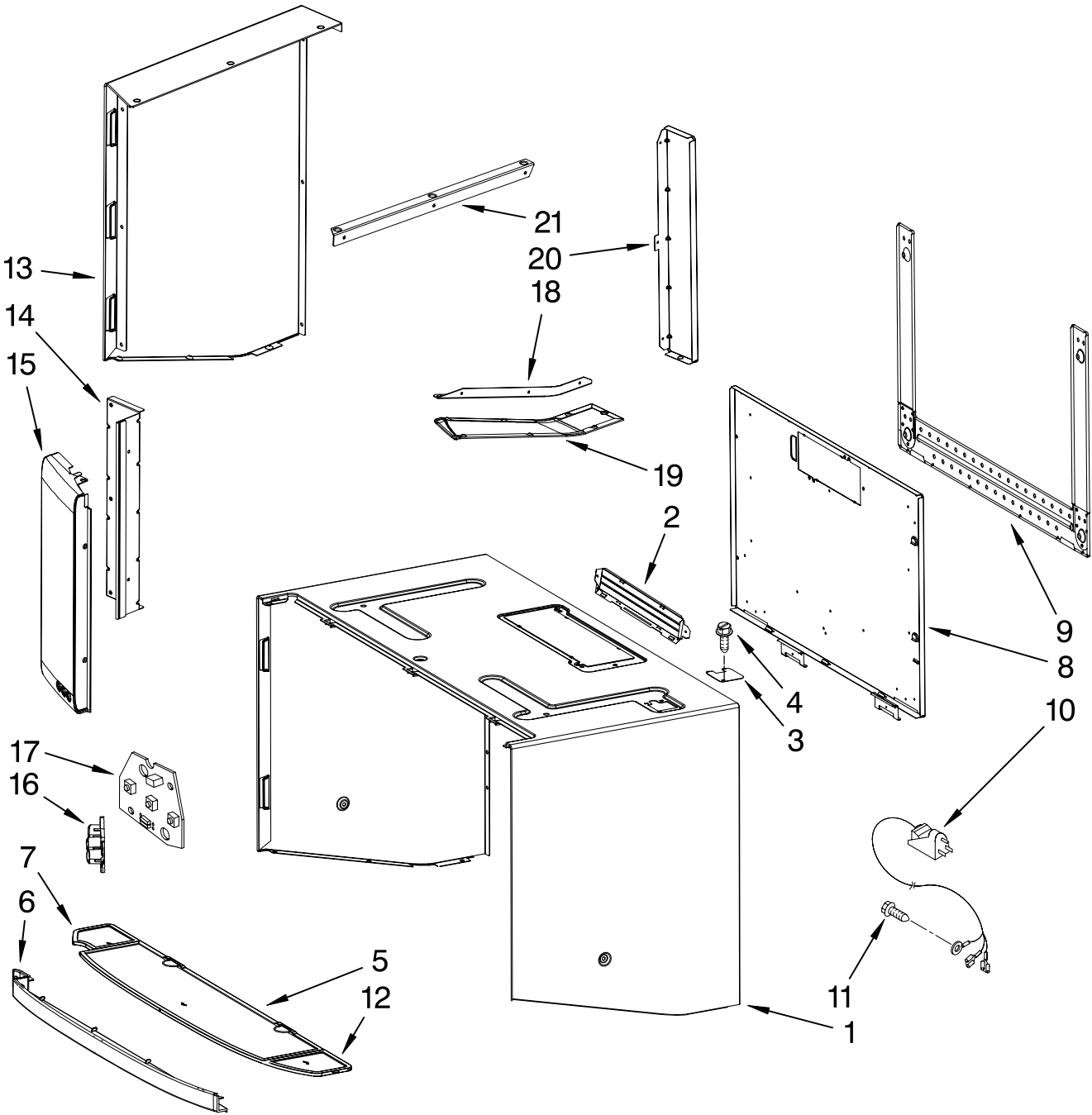
Illus. No.	Part No.	DESCRIPTION
13	8205992	Turntable
14	8206222	Ring, Turntable
15	8205994	Driver, Turntable
16	W10106520	Handle
17	8206034	Clip, Cavity Lamp

Illus. No.	Part No.	DESCRIPTION
18	8206101	Spacer
19	W10143959	Motor, Turntable
20	4393832	Screw
23	8206116	Spacer
24	8206066	Cover, Inlet
25	8206476	Lid, Lamp

FOR ORDERING INFORMATION REFER TO PARTS PRICE LIST

CABINET AND INSTALLATION PARTS

For Models: KHMS2056SWH0, KHMS2056SBL0, KHMS2056SSS0
(White) (Black) (Stainless Steel)



FOR ORDERING INFORMATION REFER TO PARTS PRICE LIST

CABINET AND INSTALLATION PARTS

For Models: KHMS2056SWH0, KHMS2056SBL0, KHMS2056SSS0

(White)

(Black)

(Stainless Steel)

Illus. No.	Part No.	DESCRIPTION	Illus. No.	Part No.	DESCRIPTION	Illus. No.	Part No.	DESCRIPTION
1		Case, Outer	14	W10143976	Side Panel Sup.(2)	Miscellaneous		
	W10143952	White	15		Panel, Front		W10128803	Hardware, Install
	W10143953	Black		W10143977	White, Left		8205274	Template, Upper
	W10143954	Apollo Grey		W10143986	White, Right		W10113776	Harns-Wire,#70 RCB
2	8206442	Damper		W10143978	Black, Left		W10113062	Main Harness
3	8184897	Lid, Power Cord		W10143987	Black, Right		8206185	Ground Wire
4	4393472	Screw		W10143979	Stnls. Left		8206186	Ground Wire (Mag)
5	8206475	Vent Screen (Middle)		W10143988	Stnls. Right		W10143999	Harns-Wire, Cooktp
6		Support,	16		Button		W10112290	Harns-Wire,#71 RCB
		Vent Screen		W10143980	White		W10113777	Harns-Wire,
	8206011	White		W10143981	Black			RCB - Inverter
	W10143735	Black		W10143982	Stainless		8206189	Hood/Light Control
	W10116263	Stainless	17	W10143983	Hood/Light Switch			Harns-Wire #74
7	8206207	Vent Screen (Left)			Board		W10113778	Hood/Light Control
8	8206051	Plate, Back	18		Bracket			Harns-Wire #73
9	8206319	Plate, Mounting		W10143984	Lower Left		W10113779	Harns-Wire #75
10	8206182	Cord, Power	19		Plate (Co.)			P64 RCB
21		Bracket, Upper		W10143985	Bottom, Left		W10113780	Harns-Wire #76
11	4393836	Screw		W10143989	Bottom, Right			P2 RCB
12	8206206	Vent Screen (Right)	20		Plate, Back		8206468	Harns-Wire #77
13		Panel, Side		W10143994	Right			P3 LCD to UIB
	W10143968	White, Left		W10143996	Left			
	W10143991	White, Right	21		Bracket, Upper			
	W10143969	Black, Left		W10143995	Right			
	W10143992	Black, Right		W10143997	Left			
	W10143975	Stainless, Left						
	W10143993	Stainless, Right						

FOR ORDERING INFORMATION REFER TO PARTS PRICE LIST

Free Manuals Download Website

<http://myh66.com>

<http://usermanuals.us>

<http://www.somanuals.com>

<http://www.4manuals.cc>

<http://www.manual-lib.com>

<http://www.404manual.com>

<http://www.luxmanual.com>

<http://aubethermostatmanual.com>

Golf course search by state

<http://golfingnear.com>

Email search by domain

<http://emailbydomain.com>

Auto manuals search

<http://auto.somanuals.com>

TV manuals search

<http://tv.somanuals.com>