

DOOR AND PANEL PARTS

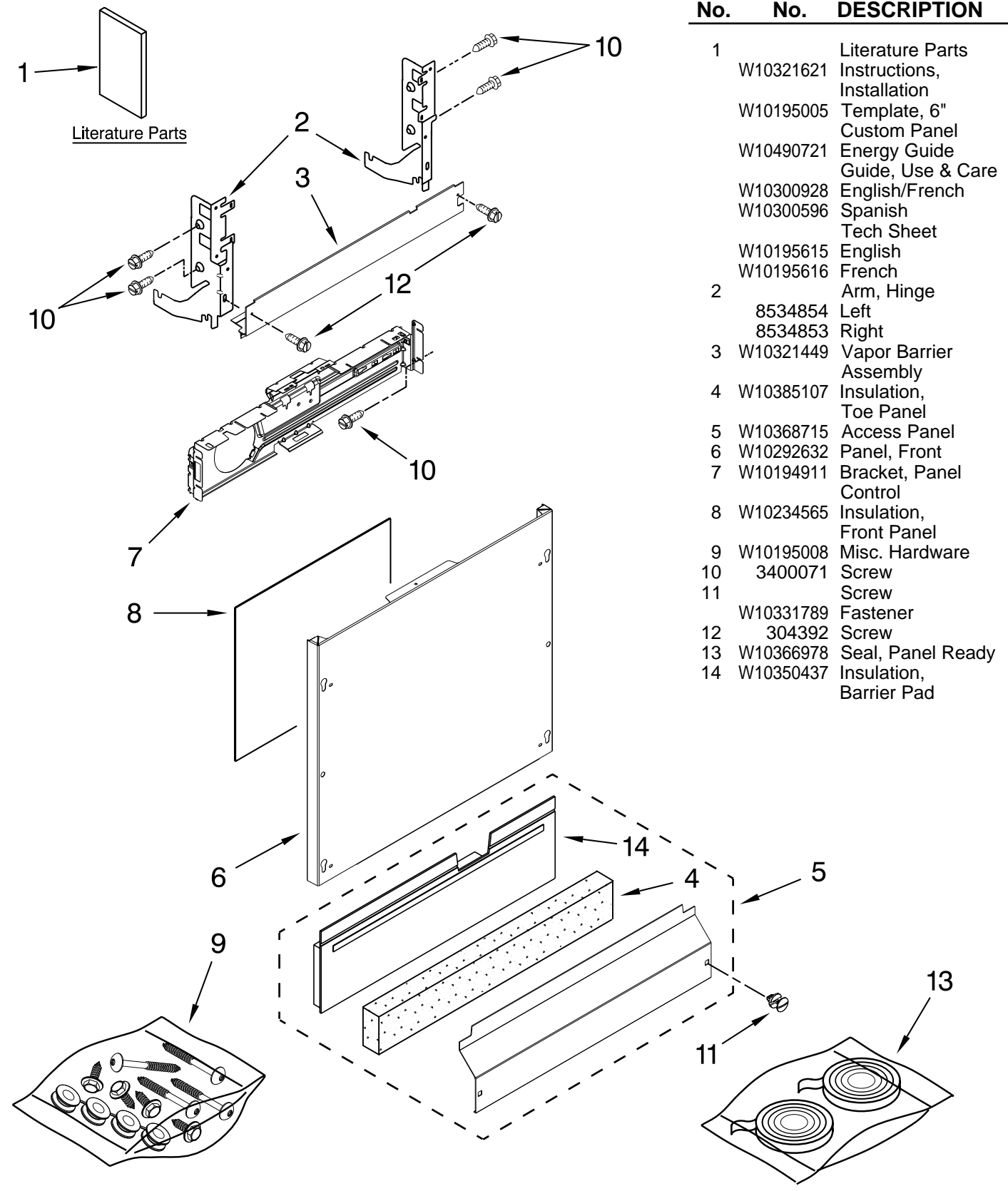
For Models: KUDS30FXPA8

(Panel Ready)

UNDERCOUNTER
DISHWASHER

KitchenAid®

Illus. No.	Part No.	DESCRIPTION
------------	----------	-------------



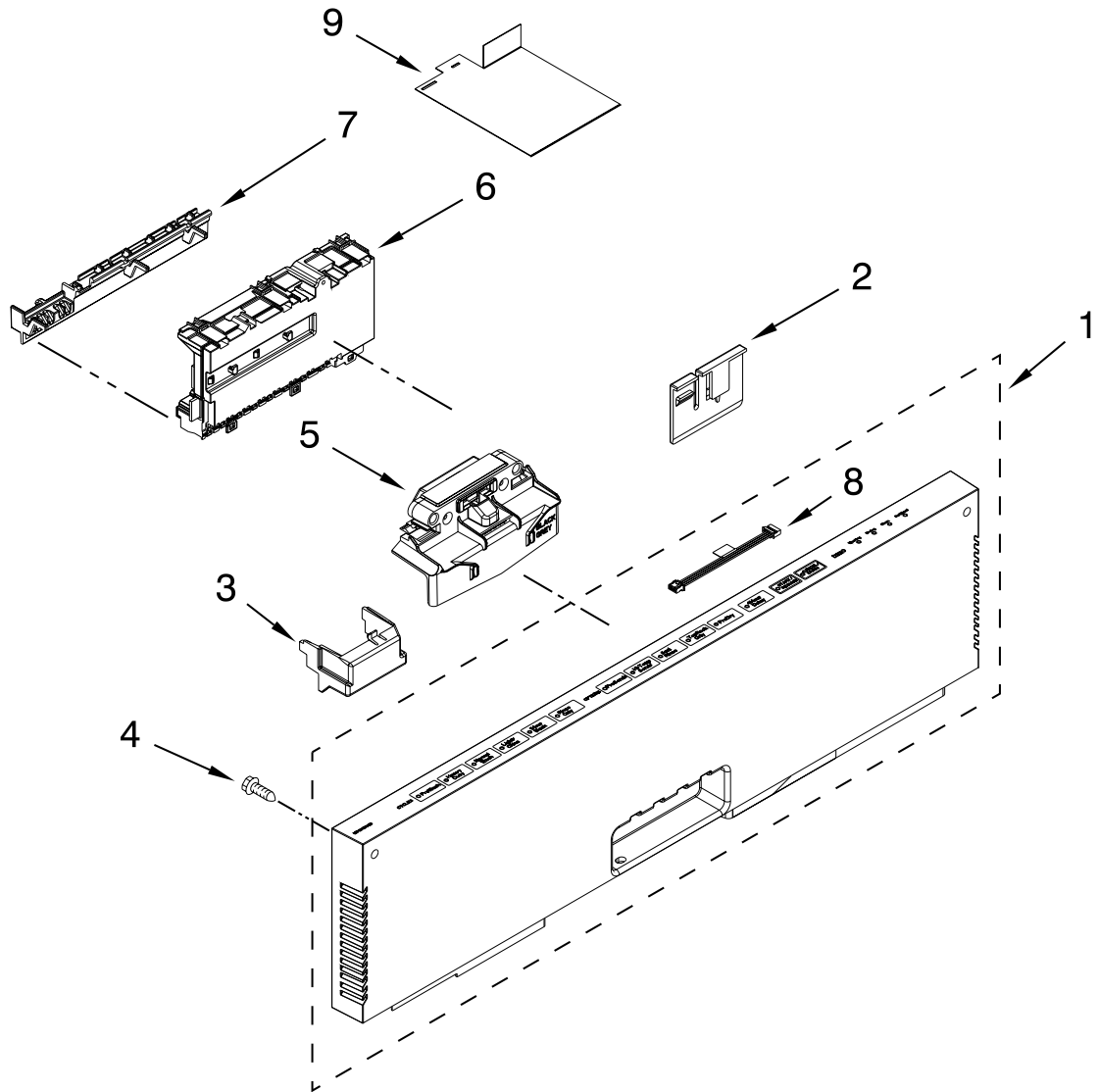
1	W10321621	Literature Parts Instructions, Installation
	W10195005	Template, 6" Custom Panel
	W10490721	Energy Guide Guide, Use & Care
	W10300928	English/French
	W10300596	Spanish Tech Sheet
	W10195615	English
	W10195616	French
2		Arm, Hinge
	8534854	Left
	8534853	Right
3	W10321449	Vapor Barrier Assembly
4	W10385107	Insulation, Toe Panel
5	W10368715	Access Panel
6	W10292632	Panel, Front
7	W10194911	Bracket, Panel Control
8	W10234565	Insulation, Front Panel
9	W10195008	Misc. Hardware
10	3400071	Screw
11		Screw
	W10331789	Fastener
12	304392	Screw
13	W10366978	Seal, Panel Ready
14	W10350437	Insulation, Barrier Pad

FOR ORDERING INFORMATION REFER TO PARTS PRICE LIST

CONTROL PANEL AND LATCH PARTS

For Models: KUDS30FXPA8

(Panel Ready)



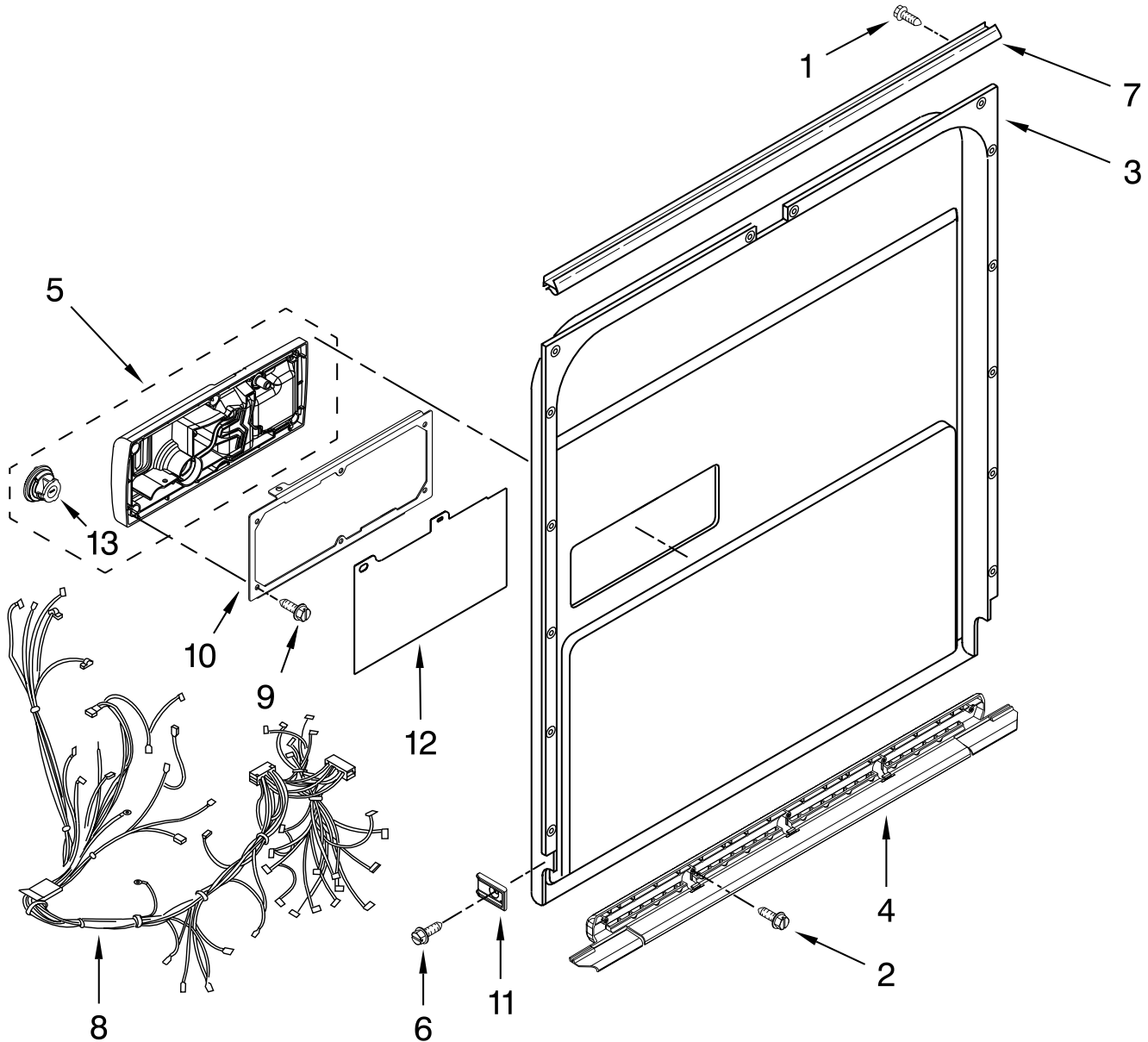
Illus. No.	Part No.	DESCRIPTION
1	W10315235	Console Assembly
2	W10195237	Clip, Control
3	W10401190	Box, Connector
4	W10348409	Screw
5	W10380262	Latch Assembly (Includes Switch)
6	W10461372	Control, Electronic
7	W10194937	Brace, Connector
8	W10315814	Jumper, 4-Wire
9	W10355484	Shield, Control

FOR ORDERING INFORMATION REFER TO PARTS PRICE LIST

INNER DOOR PARTS

For Models: KUDS30FXPA8

(Panel Ready)



Illus. No.	Part No.	DESCRIPTION
1	W10348409	Screw, Door
2	8281217	Screw
3	W10480715	Inner Door & Mastic Assembly
4	W10497235	Seal, Door Bottom

Illus. No.	Part No.	DESCRIPTION
5	W10304408	Dispenser, Assembly
6	3400071	Screw
7	W10195007	Seal, Console/Door
8	W10496097	Wiring Harness
9	W10177098	Screw

Illus. No.	Part No.	DESCRIPTION
10	W10462232	Bracket, Dispenser
11	W10195837	Barrier, Vapor Door
12	W10482094	Cover, Dispenser
13	W10482848	Cap, Rinse Aid

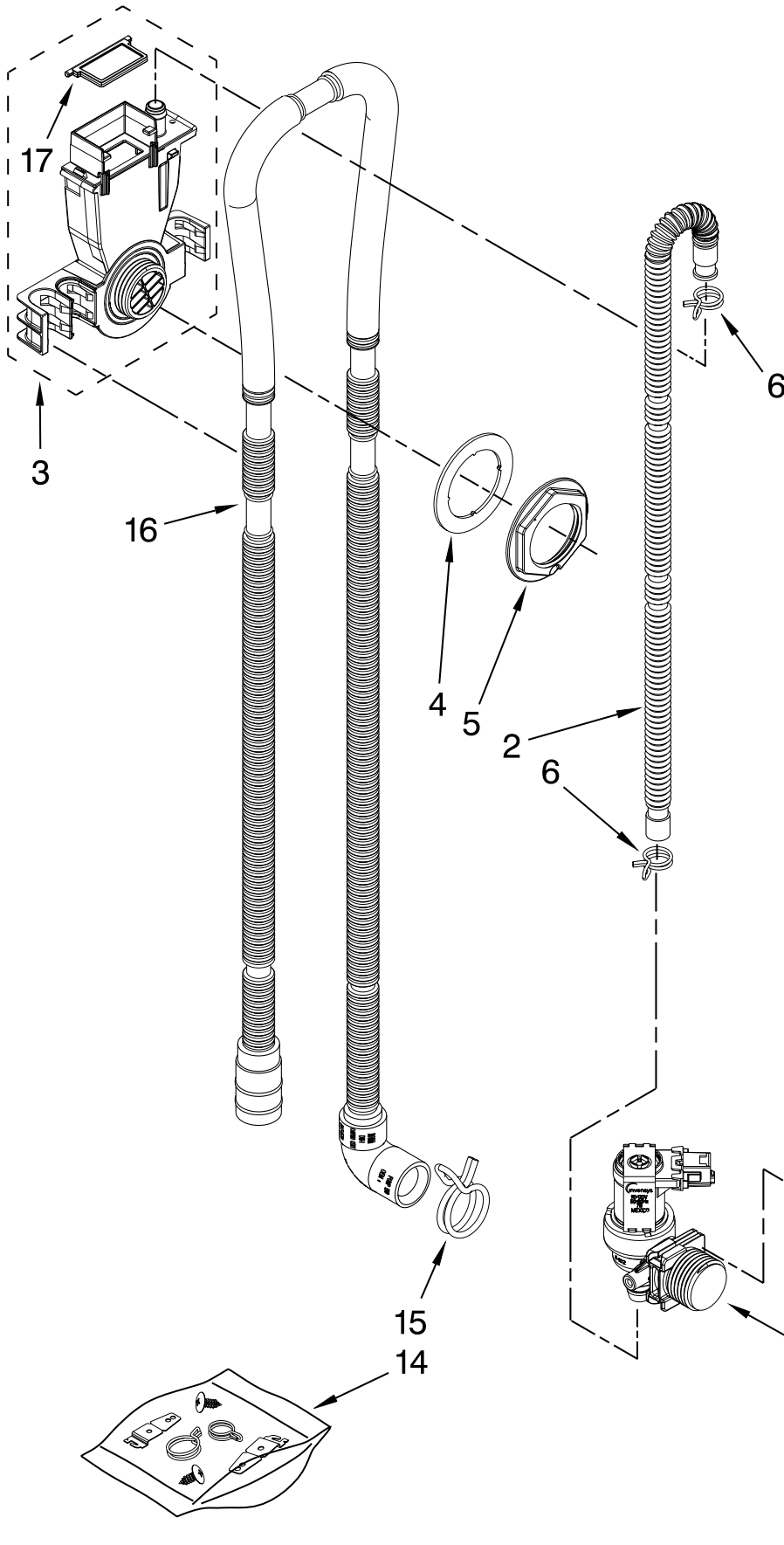
FOR ORDERING INFORMATION REFER TO PARTS PRICE LIST

FILL, DRAIN AND OVERFILL PARTS

For Models: KUDS30FXPA8

(Panel Ready)

Illus. No.	Part No.	DESCRIPTION
------------	----------	-------------



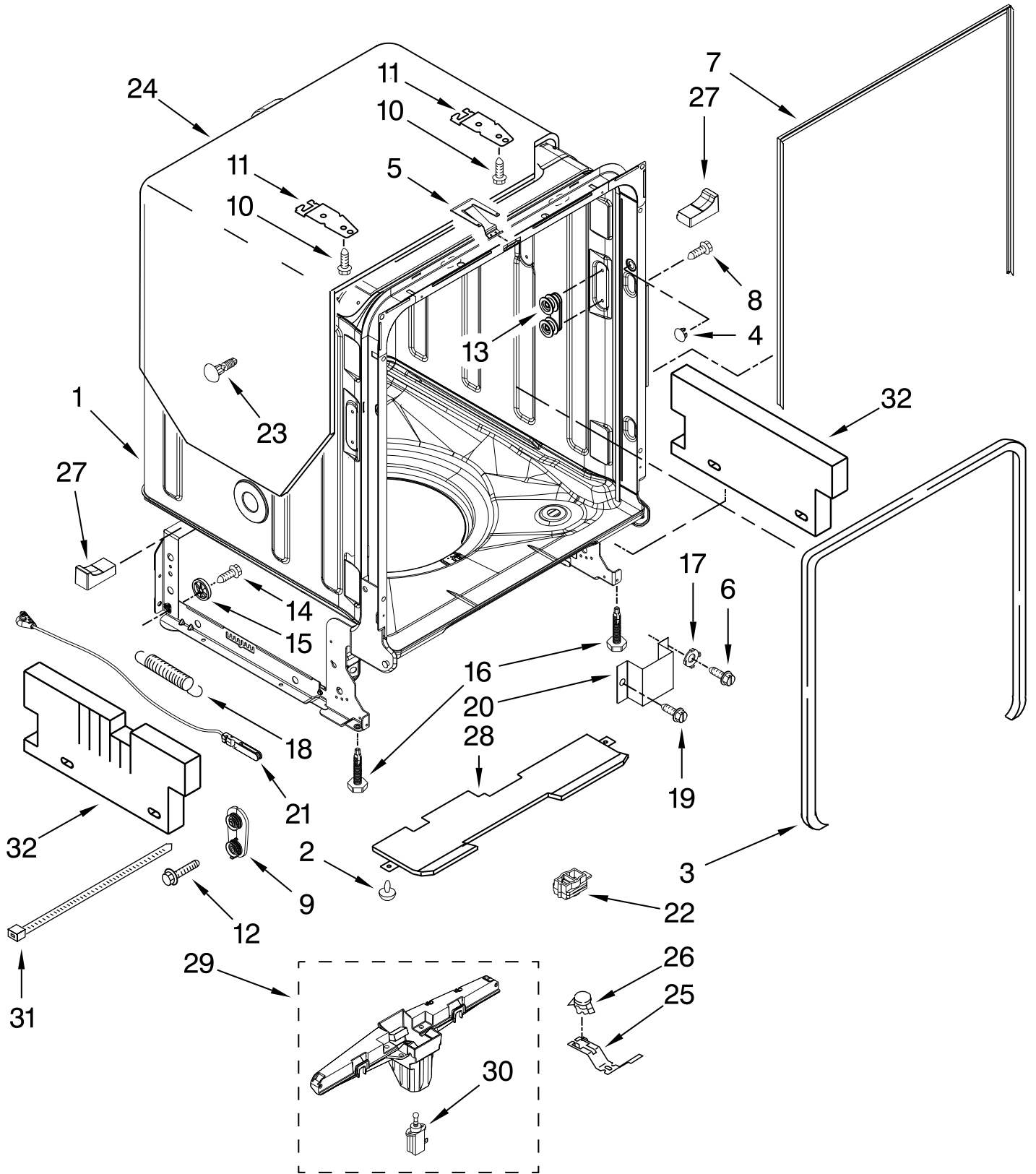
1	W10195037	Lever, Overfill Switch
2	8531412	Hose, Inlet
3	W10316375	Water Inlet (Also Order Items 4 & 17)
4	8531323	Gasket
5	W10213826	Nut, Inlet (Also Order Item 4)
6	371505	Clamp, Hose
7	W10316814	Fill Valve Assembly
8	304231	Screw
9	W10195039	Switch, Overfill Control
10	W10195035	Standpipe, Overfill (Also Order #11)
11	8531743	Gasket, Flat
12	W10195038	Nut, Standpipe
13	W10195036	Float & Retainer Assembly
14	W10292152	Miscellaneous Parts Bag (Contains 2 Hose Clamps, Screws & 2 Under Counter Brackets)
15	370445	Clamp, Hose
16	W10418849	Drain Loop with Check Valve
17	W10316376	Flapper

FOR ORDERING INFORMATION REFER TO PARTS PRICE LIST

TUB AND FRAME PARTS

For Models: KUDS30FXPA8

(Panel Ready)



FOR ORDERING INFORMATION REFER TO PARTS PRICE LIST

TUB AND FRAME PARTS

For Models: KUDS30FXPA8

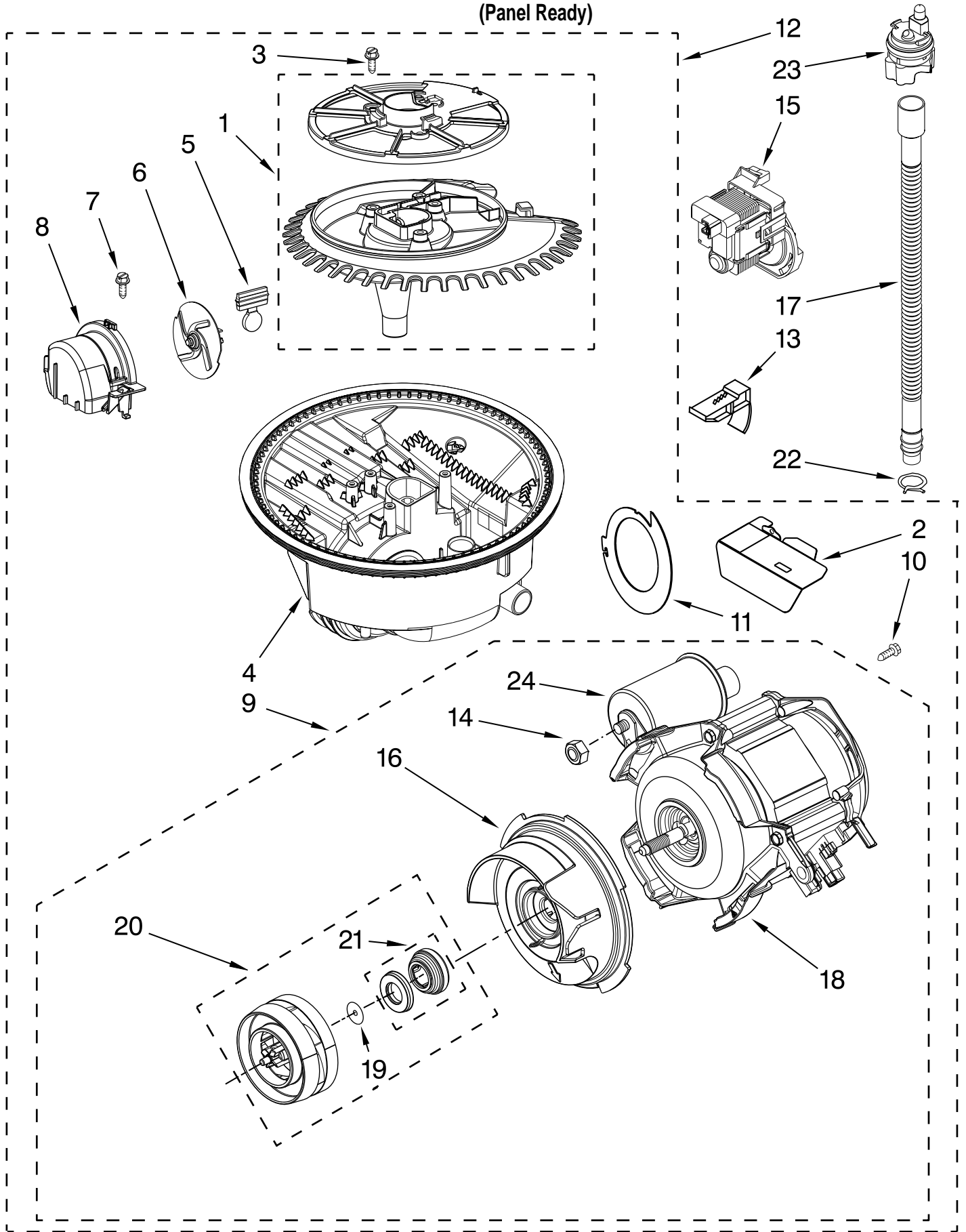
(Panel Ready)

Illus. No.	Part No.	DESCRIPTION
1	W10511187	Tub Assembly (Also Includes Heater Assembly)
2	3400924	Retainer, Push
3	W10300924	Seal, Door
4	W10082838	Plug, Tub
5	W10300779	Strike, Plate
6	3400014	Screw
7	W10179427	Seal, Cabinet
8	W10309090	Screw
9	W10084086	Door, Balance Assembly
10	3367670	Screw
11	8269145	Bracket, Undercounter
12	3400074	Screw
13	W10505748	Wheel, Tub
14	W10348411	Screw
15	8268977	Wheel Leg
16	8524584	Leveler, Leg
17	3378128	Washer, Pronged Cup
18	8270020	Spring, Door Balance
19	W10277003	Screw
20	8268991	Cover, Terminal Box
21	W10158291	Cable, Door Assembly
22	W10292870	Protector
23	304666	Retainer, Push
24	8573239	Shield, Sound Tub
25	W10300703	Bracket, Thermostat
26	W10339563	Thermostat
27		Spacer, Tub/Brace
	W10195630	Left
	W10195631	Right
28	W10195367	Insulation, Bottom
29	W10412945	Actuator Assembly
30	W10082769	Motor, Wax
31	8539404	Wrap-Tie
32	W10275523	Side Shield (Right & Left)

PUMP AND MOTOR PARTS

For Models: KUDS30FXPA8

(Panel Ready)



FOR ORDERING INFORMATION REFER TO PARTS PRICE LIST

PUMP, WASHARM AND MOTOR PARTS

For Models: KUDS30FXPA8

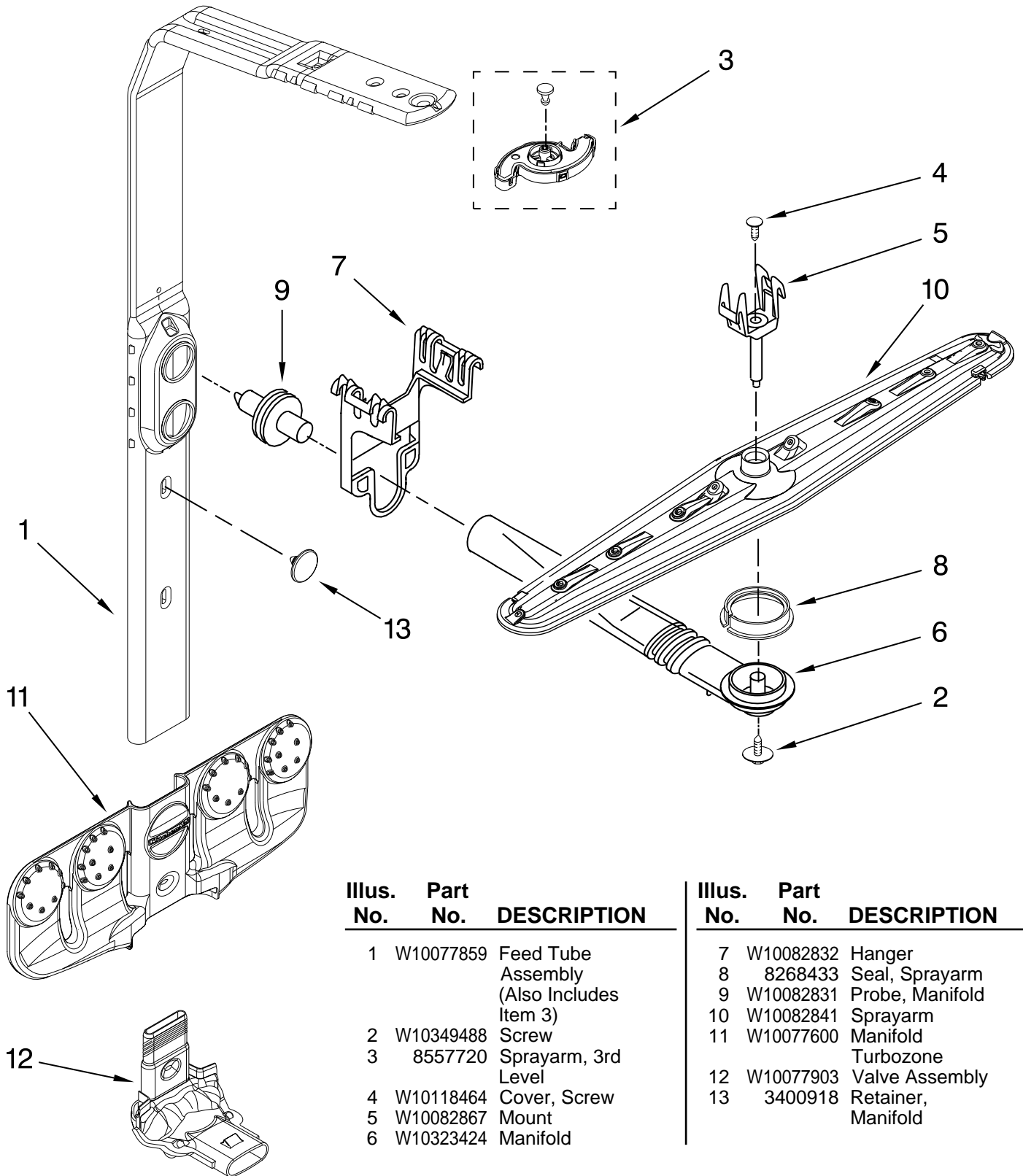
(Panel Ready)

Illus. No.	Part No.	DESCRIPTION
1	8534952	Accumulator Assm.
2	8283527	Shield
3	W10348405	Screw
4	8572618	Sump With Seal
5	8268375	Check Valve, Sump
6	W10083957	Chopper Assembly
7	9741232	Screw
8	8531857	Protector Inlet
9	W10239404	Motor Assembly
10	3400217	Screw
11	W10084567	Screen, Separation
12	W10237169	Sump & Motor Assembly
13	W10300599	Tab, Sump
14	8533949	Nut
15	8558995	Pump, Drain
16	W10142656	Volute w/Seal (Also Order Items 19 & 21)
17	8269144	Hose, Drain
18	W10239401	Motor
19	8531018	Washer
20	8531017	Impeller, Kit
21	8268403	Face Seal Assembly (Also Order Item 19)
22	8269146	Clamp, Hose
23	W10134017	Optical Water Indicator
24	W10334457	Capacitor

UPPER WASH AND RINSE PARTS

For Models: KUDS30FXPA8

(Panel Ready)



Illus. Part
No. No. DESCRIPTION

- | | | |
|---|-----------|--|
| 1 | W10077859 | Feed Tube Assembly
(Also Includes Item 3) |
| 2 | W10349488 | Screw |
| 3 | 8557720 | Sprayarm, 3rd Level |
| 4 | W10118464 | Cover, Screw |
| 5 | W10082867 | Mount |
| 6 | W10323424 | Manifold |

Illus. Part
No. No. DESCRIPTION

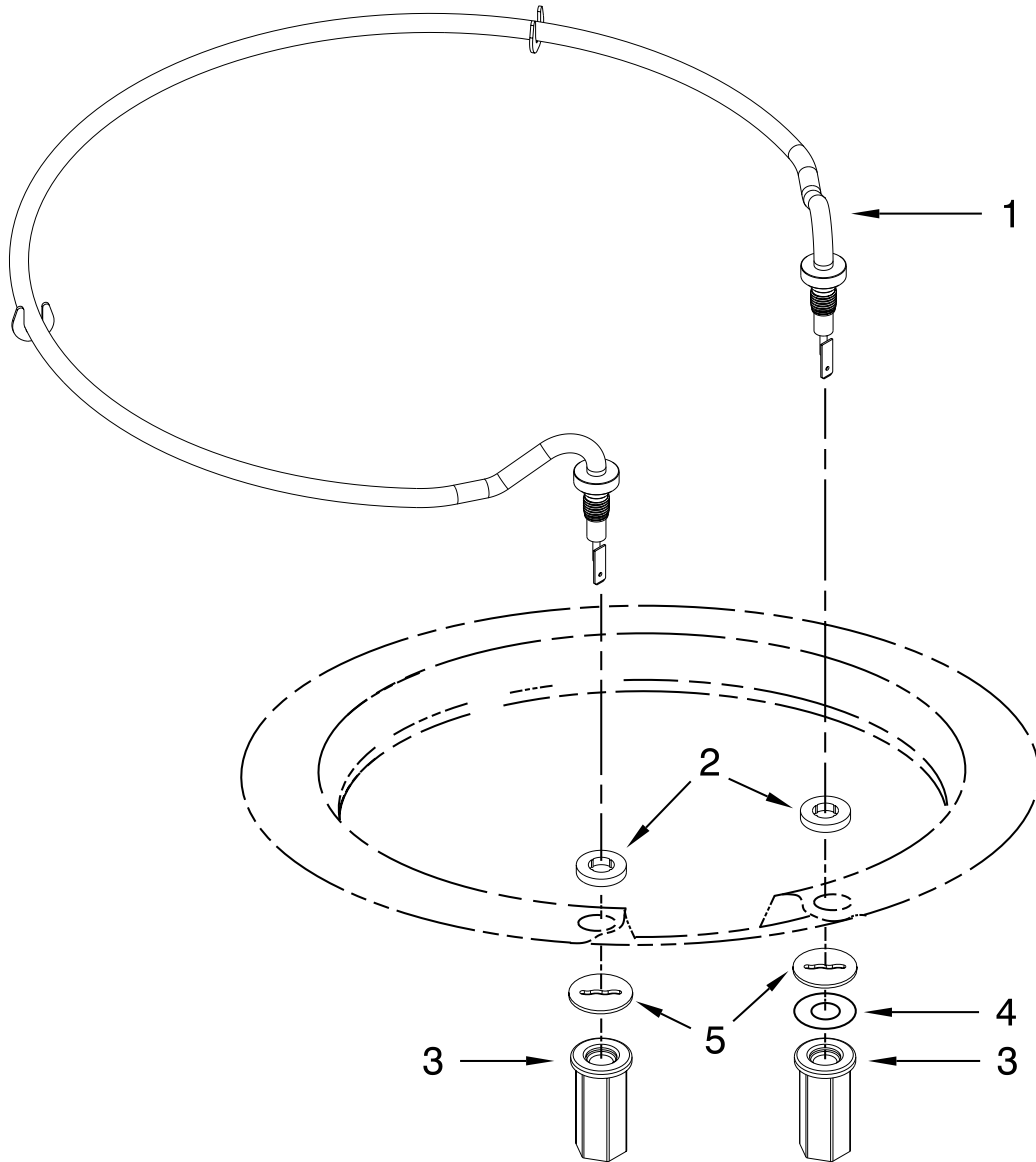
- | | | |
|----|-----------|--------------------|
| 7 | W10082832 | Hanger |
| 8 | 8268433 | Seal, Sprayarm |
| 9 | W10082831 | Probe, Manifold |
| 10 | W10082841 | Sprayarm |
| 11 | W10077600 | Manifold Turbozone |
| 12 | W10077903 | Valve Assembly |
| 13 | 3400918 | Retainer, Manifold |

FOR ORDERING INFORMATION REFER TO PARTS PRICE LIST

HEATER PARTS

For Models: KUDS30FXPA8

(Panel Ready)



Illus. No.	Part No.	DESCRIPTION
1	W10329322	Heater Element Assembly (Also Includes Item 2)
2	717273	Washer, Heater Element
3	8268548	Nut, Heater Element
4	3400931	Retainer, Spring Grip
5	W10343251	Shield, Heater Nut

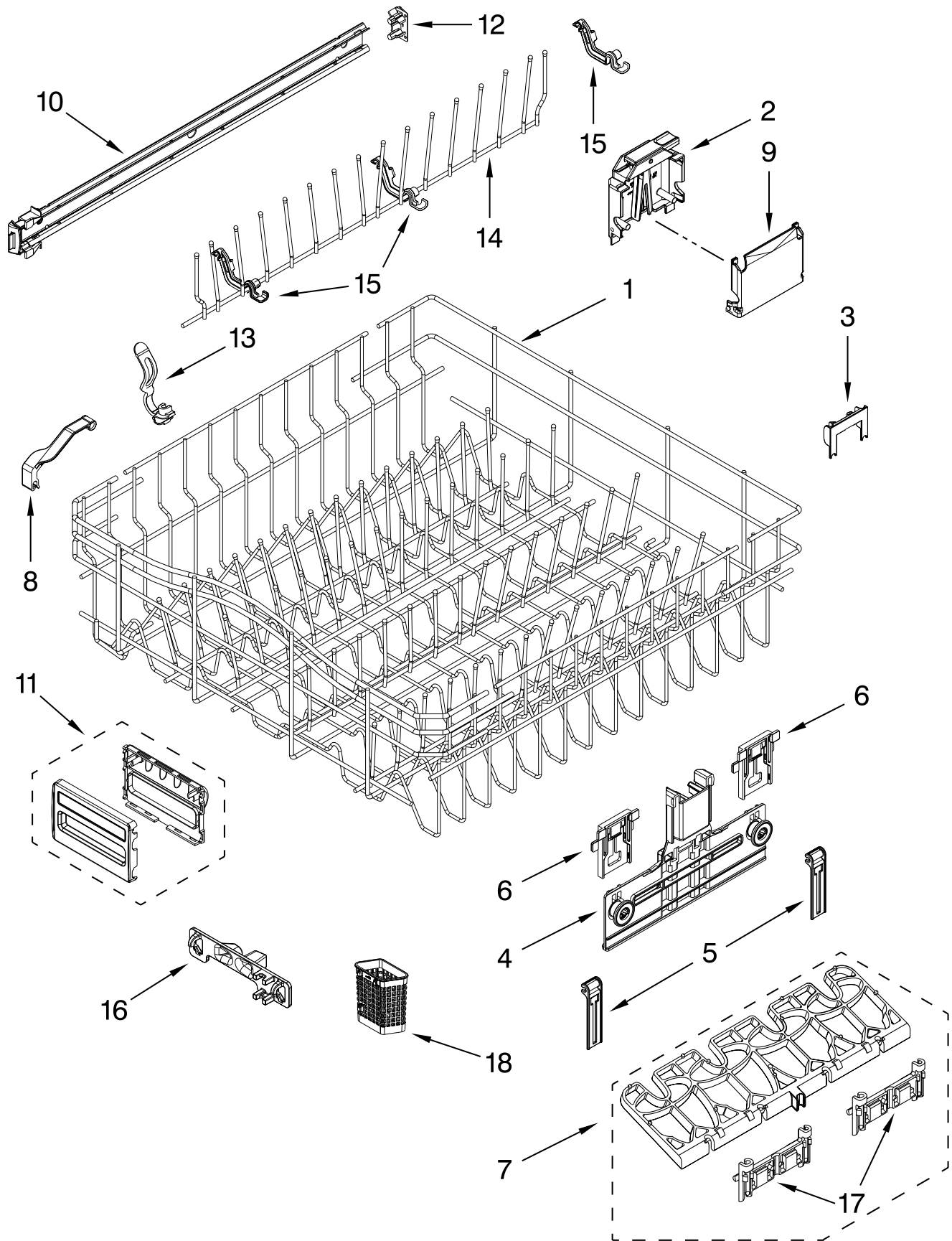
NOTE: If heater element is removed, it must be replaced.

FOR ORDERING INFORMATION REFER TO PARTS PRICE LIST

UPPER RACK AND TRACK PARTS

For Models: KUDS30FXPA8

(Panel Ready)



FOR ORDERING INFORMATION REFER TO PARTS PRICE LIST

UPPER RACK AND TRACK PARTS

For Models: KUDS30FXPA8

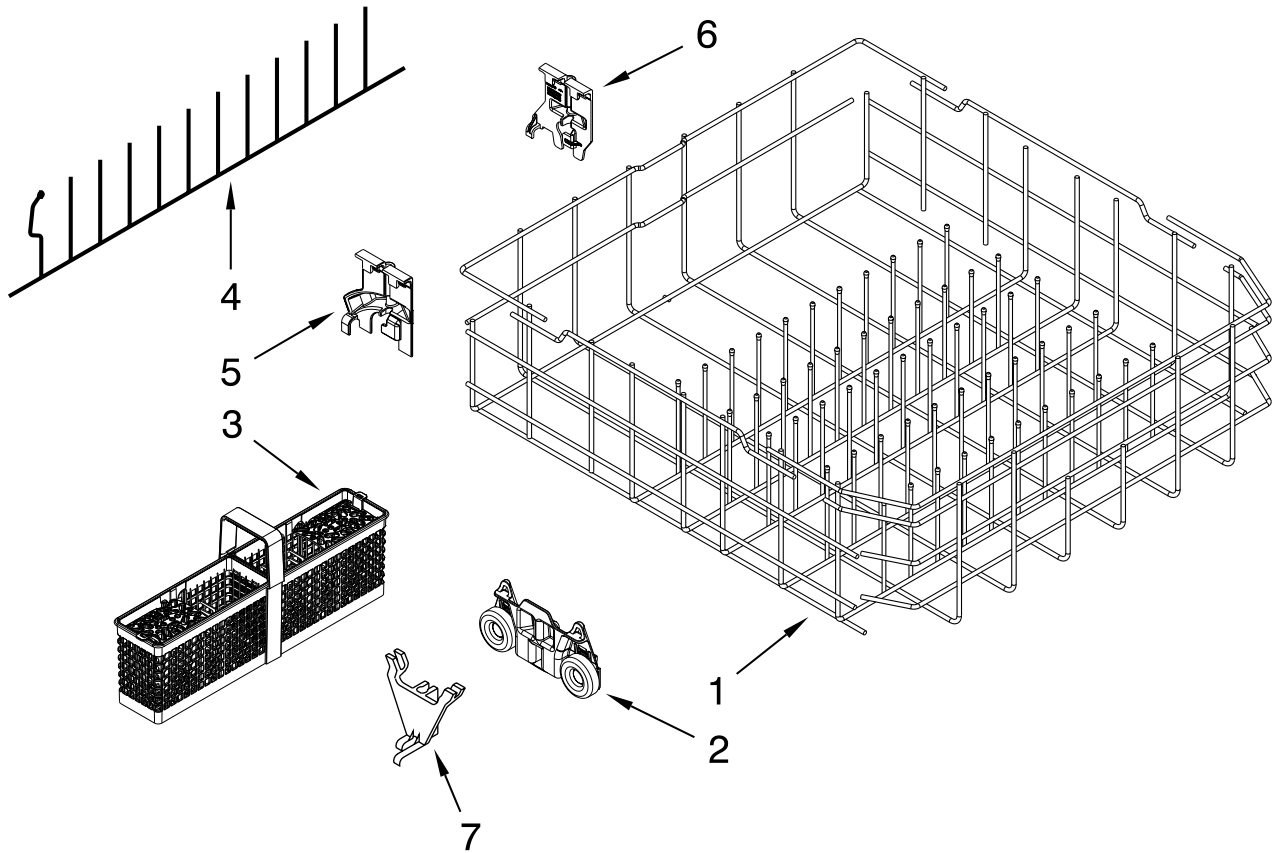
(Panel Ready)

Illus.	Part	
No.	No.	DESCRIPTION
1	W10312791	Dishrack, Upper
2		Housing, Adjuster
	W10320664	Left Hand
	W10320665	Right Hand
3	W10250160	Clip-Lock Adjuster Arm
4	W10350376	Adjuster Assembly
5	W10195839	Strap, Tether Adjuster
6	W10195840	Positioner, Adjuster
7	W10082649	Cup, Shelf
8	W10267076	Clip, Dispenser Guard
9	W10250162	Cover, Adjuster
10	W10324563	Track Assembly
11	W10282826	Handle, Dishrack
12	W10195622	Stop, Track Non-Removable
13	W10077844	Clip, No Flip
14	8562030	Tine Row
15	W10082853	Clip, Pivot
16	8539102	Positioner, Dual
17	W10082848	Clip, Cupshelf
18	W10482109	Basket, Utensil

LOWER RACK PARTS

For Models: KUDS30FXPA8

(Panel Ready)



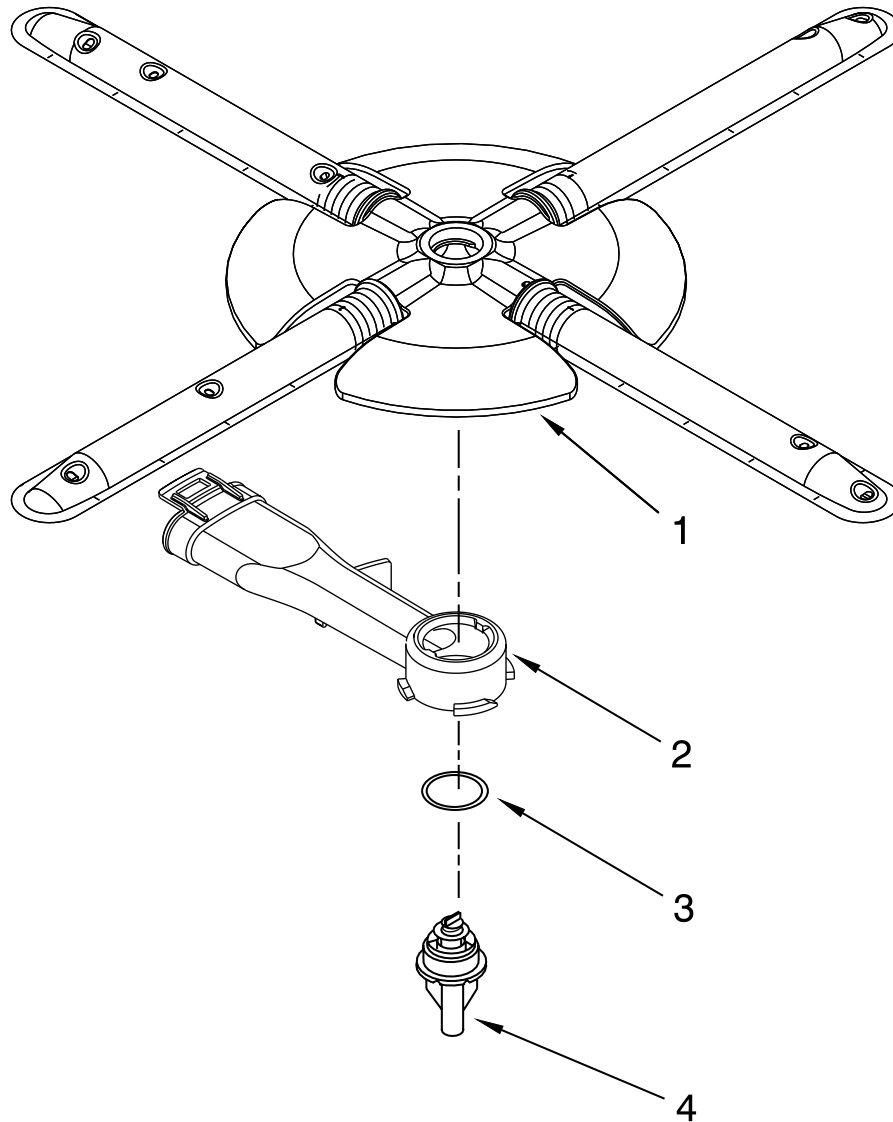
Illus. No.	Part No.	DESCRIPTION
1	W10056271	Dishrack, Lower
2	W10195416	Wheel & Transport Assembly
3	W10195723	Basket, Silverware
4	W10056272	Tine, Row
5	W10078215	Retainer, Tine Row (Combo)
6	W10175279	Retainer, Tine Row (Single)
7	W10078227	Clip, Pivot

FOR ORDERING INFORMATION REFER TO PARTS PRICE LIST

LOWER WASHARM AND STRAINER PARTS

For Models: KUDS30FXPA8

(Panel Ready)



Illus. No.	Part No.	DESCRIPTION
1	W10320510	Washarm Assembly
2	W10077899	Cap, Internal Rear Feed (Also Order Item 3)
3	8268340	Seal, Sprayarm
4	W10077898	Hub, Lower Sprayarm (Also Order Item 3)

FOR ORDERING INFORMATION REFER TO PARTS PRICE LIST

OPTIONAL PARTS (NOT INCLUDED)

For Models: KUDS30FXPA8

(Panel Ready)

Illus. No.	Part No.	DESCRIPTION
------------	----------	-------------

ACCESSORIES

Side Panel Kits
8171656 White
8171657 Black
8171658 Biscuit
8171659 Stainless Steel

Custom Panel & Trim Kit
8212489 Black

Architect II Handles

W10195738A Stainless Steel
W10195735A Black
W10195736A White
W10195737A Biscuit

Drain Hose
3385556 12 Ft.

Vinyl Touch-Up (4oz.)
676453 White
676455 Grey
4396853 Silver Atlantis

Moisture Barrier Kit
4396277 Kit

Illus. No.	Part No.	DESCRIPTION
------------	----------	-------------

PAINT, TOUCH-UP (1/2oz.)

72017 White
72032 Black
4392899 Biscuit
4396603 Meteorite

PAINT, PRESSURIZED SPRAY (12 oz.)

350930 White
285006 Superior Black
4392901 Biscuit

PAINT, BULK (1 qt.)

799344 White (Uncut)
4392900 Biscuit

Illus. No.	Part No.	DESCRIPTION
------------	----------	-------------

POWER CORD KIT

4317824 Power Cord Kit
(Includes Power
Cord & Misc.
Hardware)

ANTI-TIP KIT

8171477 Floor Mount Kit
8212560 Side Mount Kit

DISHRACK REPAIR

4396838 White
4396840 Grey
4396854 Silver Atlantis

FOR ORDERING INFORMATION REFER TO PARTS PRICE LIST

Free Manuals Download Website

<http://myh66.com>

<http://usermanuals.us>

<http://www.somanuals.com>

<http://www.4manuals.cc>

<http://www.manual-lib.com>

<http://www.404manual.com>

<http://www.luxmanual.com>

<http://aubethermostatmanual.com>

Golf course search by state

<http://golfingnear.com>

Email search by domain

<http://emailbydomain.com>

Auto manuals search

<http://auto.somanuals.com>

TV manuals search

<http://tv.somanuals.com>