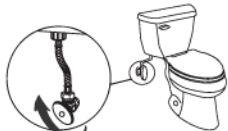


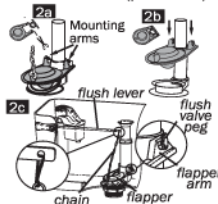


(818) Instructions

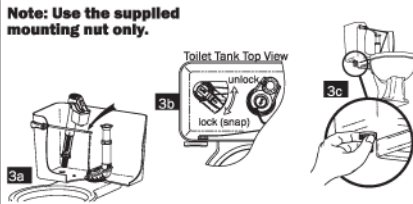
1. Shut off water supply and remove old fill valve or ballcock. Flush toilet and sponge remaining water from tank. Remove old fill valve or ballcock by disconnecting water supply line under tank.



2. Replace flapper. Remove old flapper. Cut collar for plastic flush valve (2a) **OR** do not cut collar for brass flush valve (2b). Attach stainless steel flapper chain to lever (picture 2c). The chain should have minimal slack (picture 2c).



3. Install new fill valve. Slide threaded valve shaft through hole in tank (picture 3a). Be sure to install valve in the locked position at the angle shown in picture 3b. Thread supplied mounting nut onto exposed shaft under tank and **hand tighten only** as shown in picture 3c. **(Do not over tighten to prevent overstraining the valve)**



(818) Instructions

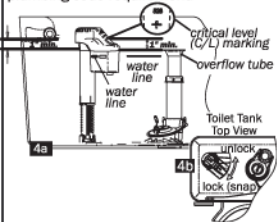
Toilet Fill Valve & Premium Flapper
Korky QuietFILL

Korky QuietFILL
Toilet Fill Valve & Premium Flapper

(818) Instructions

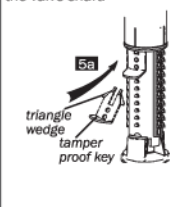
4. Adjust fill valve height.

To adjust, simply turn upper half of valve counterclockwise to unlock, pull up until water line on valve is level with water line marked in tank (picture 4a). Then turn clockwise until valve snaps into locked position (picture 4b). Verify C/L line (critical level) on white cover is at least 1" above top of overflow tube. This is a plumbing code requirement.



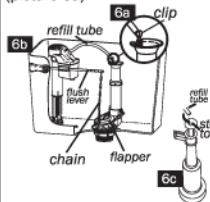
5. Install tamper proof key.

Supplied tamper proof key prevents further adjustment once valve snaps into locked position (picture 5a). **Note: When key is properly installed, triangular wedge is not visible and is completely inserted beneath the valve shaft.**



6. Attach refill tube.

Attach refill tube to fill valve and clip other end to flush valve overflow tube as shown (picture 6a).

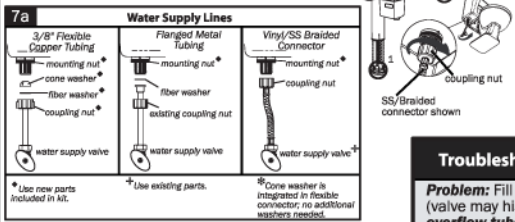


Note: For Mansfield flush valves (picture 6c), unscrew stop top, insert and gently twist tube into the stop top. Rescrew the stop top to flush valve and attach tube to valve.

7. Connect water supply line and turn on water supply.

Connect water supply as shown (picture 7a). Pipe dope is not recommended. **Hand tighten only; do not over tighten coupling nut to prevent overstraining the valve.** Check that the position of the fill valve in tank has not changed due to tightening of coupling nut. Water will flow from 3 areas on the fill valve during the fill cycle (picture 7b):

- 1) Base of valve shaft
- 2) Through refill tube into flush valve overflow tube
- 3) Area where white cover meets black body



Troubleshooting and Servicing Tips for Future Use

Problem: Fill valve turns on and off by itself or runs continuously (valve may hiss), **but water level in tank remains below top of overflow tube.**

Solution: Fill valve is turning on or running due to a slow leak in the tank, most likely caused by a worn-out flapper. Replace flapper with one of Lavelle's premium Korky toilet flappers for optimum performance.

Problem: Fill valve turns on and/or continuously runs, **and water level rises above top of overflow tube, spilling into overflow tube.**

Solution: Clean fill valve cap. Follow service steps above to remove cap and rinse under water. If cap and rubber diaphragm show significant wear, replace with a new cap assembly (Lavelle p/n: R528).

Problem: Toilet tank fills too slowly.

Solution: Confirm that water supply valve is open all the way, and there are no kinks in supply line. If flow does not improve, then clean strainer by following the service steps above.

Problem: There is a steady stream of water flowing down from under the white cover when the tank refills.

Solution: Do nothing. Some water flow under the cover is normal while the tank is refilling. It will stop when the valve shuts off. See step 7 for more details.

Need Help? Call 1-800-528-3553

www.korky.com/troubleshooting.html

Save instructions for future reference.



Lavelle Industries, Inc.
665 McHenry Street
Burlington, WI 53105
800-LAVELLE
www.korky.com

Summary of Limited Warranty and Disclaimer of Warranties

Lavelle Industries, Inc. ("Seller") warrants solely to the original purchaser ("Buyer") of this **Korky® QuietFILL® Toilet Fill Valve & Premium Flapper** ("Product") that the Product will be free from material defects in workmanship and materials under normal use and service for a period of 5 years from the date of purchase. There is **NO WARRANTY** in cases of: negligence; abuse; abnormal usage; misuse; accidents; normal wear and tear; failure to follow Seller's instructions; improper installation (including, without limitation, over-tightening of mounting nut), storage or maintenance; or exposure of the Product to in-tank drop-in cleaning products containing harsh chemicals.

This is only a summary of the Limited Warranty and Disclaimer of Warranties. A complete copy of the Limited Warranty and Disclaimer of Warranties is available at www.korky.com. In addition, a hard copy is available upon request by contacting Customer Service at 665 McHenry Street, Burlington, WI 53105.

Fill Valve Servicing Steps

A. Turn off water supply. Flush toilet. Remove refill tube and snap off cover.

B. Remove float by gently squeezing float arms inward.

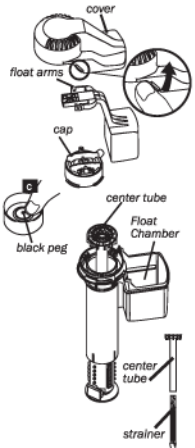
C. While holding valve body with one hand, twist cap 1/8 turn counterclockwise and remove. While running cap assembly under warm water, compress raised portion of red diaphragm seal to ensure seal moving freely around black peg.

D. Lift out center tube.

E. Use pliers to remove strainer from center tube. Clean strainer by rinsing under running water.

F. Reassemble valve by reversing the above procedure. After reattaching float, tap top of float to ensure float moves freely and does not make contact with the sidewalls of float chamber.

Note: If the red rubber diaphragm inside the cap is worn or punctured, cleaning will not suffice. A replacement cap assembly, Lavelle p/n: R528, will be required.



Free Manuals Download Website

<http://myh66.com>

<http://usermanuals.us>

<http://www.somanuals.com>

<http://www.4manuals.cc>

<http://www.manual-lib.com>

<http://www.404manual.com>

<http://www.luxmanual.com>

<http://aubethermostatmanual.com>

Golf course search by state

<http://golfingnear.com>

Email search by domain

<http://emailbydomain.com>

Auto manuals search

<http://auto.somanuals.com>

TV manuals search

<http://tv.somanuals.com>