

POWERSMART[®]

INSTRUCTION MANUAL

SPIN MOP Model # PS3002



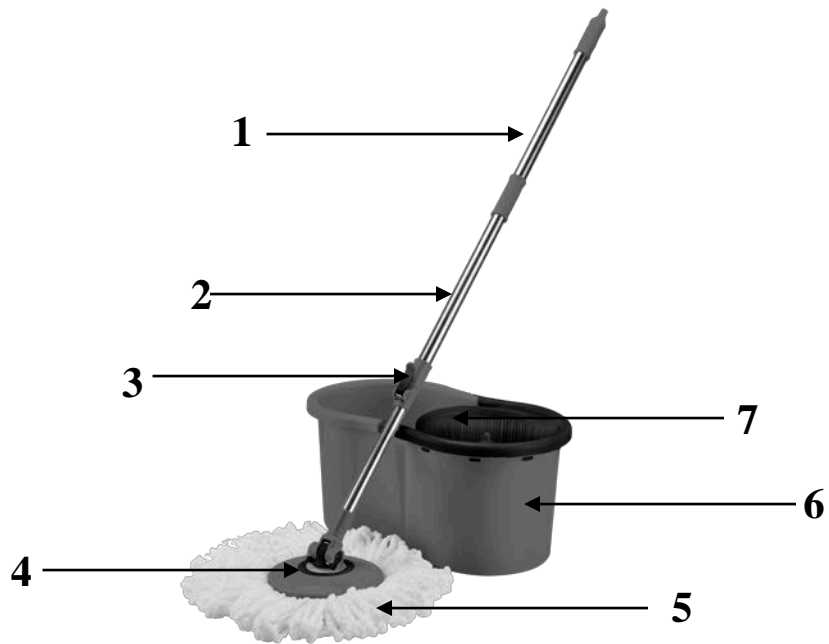
- ✓ **Clean Easy**
- ✓ **Wring Easy**



Have product questions or need technical support? Please feel free to contact us!

Website: www.Amerisuninc.com
www.PowerSmartUSA.com
Toll free: 1-800-791-9458 M-F 9-5 EST
Email: support@amerisuninc.com

KNOWING YOUR SPIN MOP



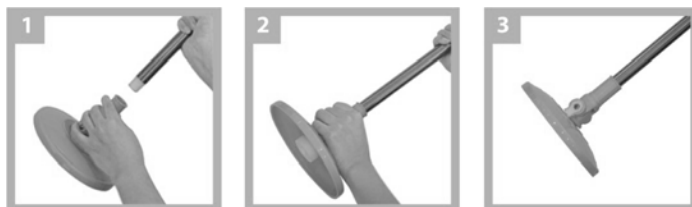
- | | | | |
|---|--------------|---|-------------------|
| 1 | Upper handle | 5 | Mop head |
| 2 | Lower handle | 6 | Bucket |
| 3 | Mop lock | 7 | Dehydrator basket |
| 4 | Mop base | | |

MOP ASSEMBLY AND HOW TO USE IT



Install the upper handle and lower handle
Screw upper handle clockwise into lower handle.

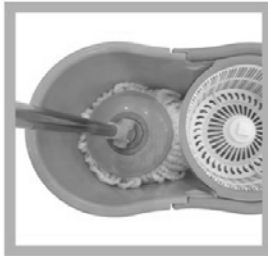
Install the lower handle and mop base
According to below three pictures;





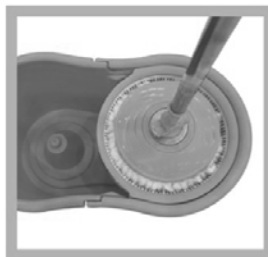
To assembly the mop

Pair upper disc and cloth disc, push them together until a 'click' sound is heard.



Mop head cleaning

First loosen the mop lock on the lower handle, then put the mop head into the bucket, make sure the mop head fixed onto the rotating head, then gently press the mop down to rinse.



Dehydration

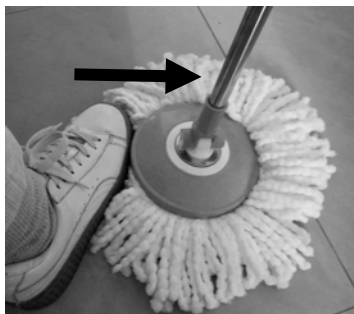
First loosen the mop lock on the lower handle, then transfer the wet mop head into the dehydrator basket, Press the handle downward and upward vertically to dehydrate the water.



Attention

Do not plug the mop lock when not in use.

Mop head removal and cleaning



Removing mop head:






Gently step on the mop head while pushing the mop away from you. The mop must be oriented so that the disk attachment joint does not bend as you push the mop away.

Washing mop head:

Machine wash cold, delicate cycle with mild detergent, you may need to add regular or color safe bleach as necessary. Do not use fabric softener. **DO NOT USE AN AUTOMATIC DRYER.** The mop head must air dry.

ADVANTAGES OF USING SPIN MOP

- Nice, easy and healthy way to do your mopping.
- No manual wrings to dirty your hand.
- Prevent injury to hands and waist due to manual wring.
- Swivel, bend and round microfiber mop-header design, can clean every corner of your place.
- Bucket for rinsing and dehydrating and to control the degree of wetness and dryness of mop.
- Stainless steel rods.
- For dry and wet use.
- Use on cleaning floors, windows and glass doors, car cleaning and polishing.

ATTENTION PLEASE READ IT CAREFULLY BEFORE USING SPIN MOP		
	ATTENTION	WARNING!
	<i>PLEASE REMOVE THE PACKAGINGS AND STICKERS WHEN YOU USE IT FOR THE FIRST TIME. PLEASE MAKE SURE THERE IS NO DAMAGE DURING TRANSPORTATION.</i>	<i>PLEASE REMIND YOUR FAMILY NOT TO PLAY ON THE WET FLOOR TO AVOID SLIPPAGE.</i>
	<i>DON'T USE METAL OR COARSE RAG TO WASH THE BUCKET.</i>	
	<i>DON'T PUT THE SPIN MOP DIRECTLY UNDER THE SUNSHINE OR CLOSE TO THE FIRE TO AVOID DAMAGE.</i>	
	<i>KIDS USE SPIN MOP SHOULD BE KEPT WATCHED BY ADULTS.</i>	
	<i>FALLING FROM HIGH LEVEL SHOULD BE AVOIDED.</i>	

Free Manuals Download Website

<http://myh66.com>

<http://usermanuals.us>

<http://www.somanuals.com>

<http://www.4manuals.cc>

<http://www.manual-lib.com>

<http://www.404manual.com>

<http://www.luxmanual.com>

<http://aubethermostatmanual.com>

Golf course search by state

<http://golfingnear.com>

Email search by domain

<http://emailbydomain.com>

Auto manuals search

<http://auto.somanuals.com>

TV manuals search

<http://tv.somanuals.com>