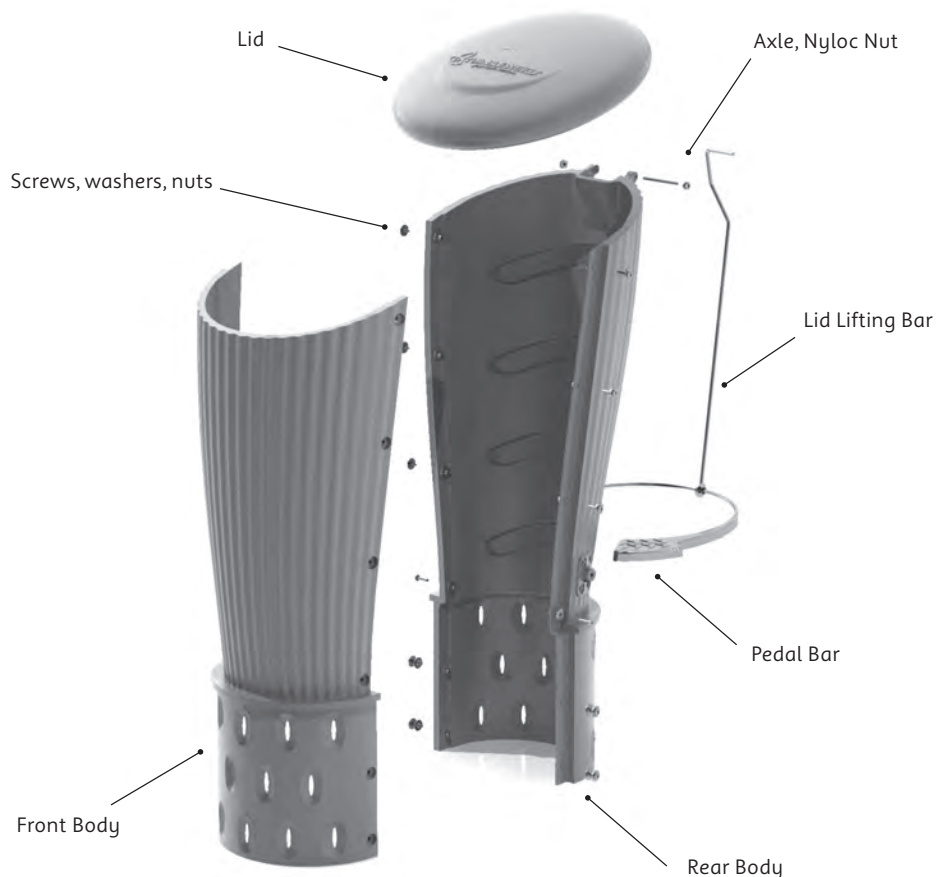


Pet Poo Worm Farm

The Tumbleweed Pet Poo Worm Farm has been developed to turn your pet droppings into great free organic fertiliser that promotes fantastic growth in your plants. By allowing worms to process your pet poo and take the castings into the surrounding soil, this product will enrich the soil in your garden with minerals and nutrients.

Assembly of your Tumbleweed Pet Poo Worm Farm is easy. This product includes the following components:

- 1 x Lid
- 1 x Front Body
- 1 x Rear Body
- 1 x Lid Lifting Bar
- 1 x Pedal Bar
- 1 x Instruction Manual
- 12 x Screws, Washers & Nuts
- 1 x Lid Axle and 1 x Nyloc Nut
- 1 x Worm Bedding Block



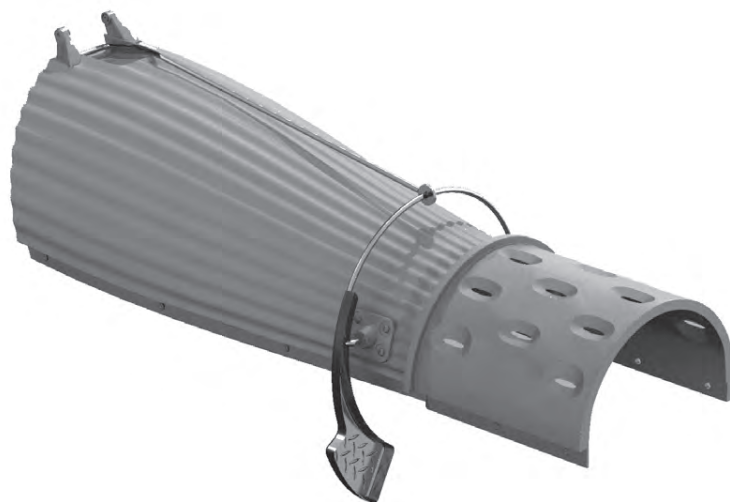
Step 1 - Assemble Pedal Mechanism

1. Slide the Lid Lifting Bar onto the Pedal bar and position between the pinch marks at the rear of the Pedal Bar – ensure correct alignment of Lid Lifting Bar.



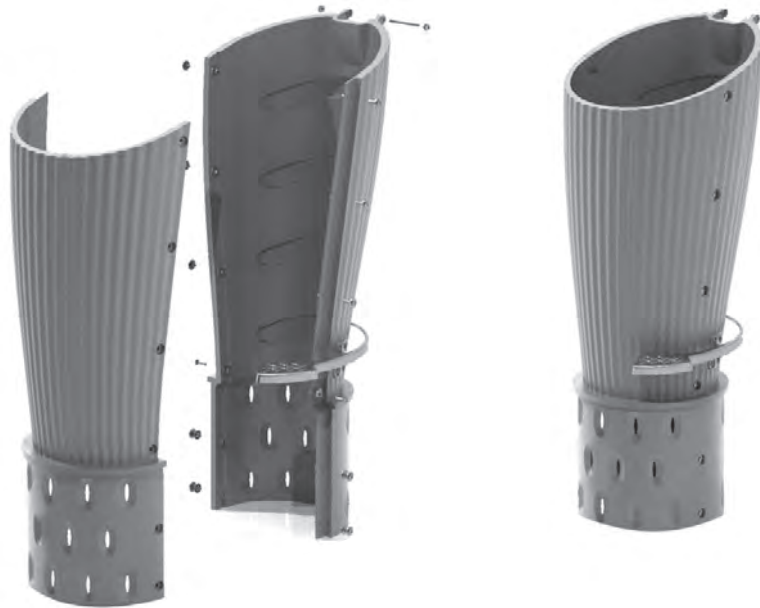
Step 2 - Assemble Pedal Mechanism to Rear Body

1. Locate one end of the Pedal Bar into one collar of the Rear Body.
2. Squeeze the Rear Body to locate the Pedal Bar into the collar on the other side.



Step 3 - Assemble Front Body to Rear Body

1. Slide the body halves together.
2. Secure with 12 screws, washers and nuts



Step 4 - Assemble Lid

1. Slide Lid onto Lid Lifting Bar.
2. Locate Lid and Rear Body and Secure with Lid axle and nyloc nut.

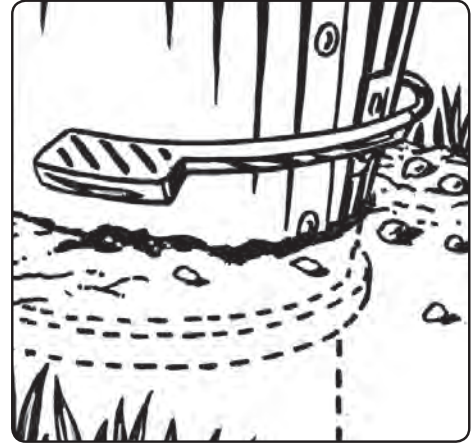


Installation Instructions

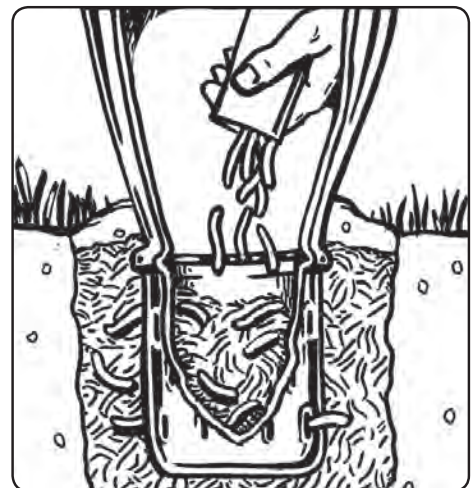
1. Find a suitable location in your yard or garden to set up your Tumbleweed Pet Poo Worm Farm. The location can be in a sunny or shady spot. Tumbleweed does not recommend that the Pet Poo Worm Farm be placed in a vegetable or herb garden.
2. Prepare the bedding block as per instruction on the packaging. The bedding block provides a “home base” for the worms to move in and out of as they process your pets dropping.
3. Dig a hole approximately 400mm square (16”) and 320mm (13”) deep, deep enough so the slange is buried just below ground level.
4. Sprinkle a good handful of Tumbleweed Worm Farm & Compost Conditioner in the base of the hole.
5. Locate your Tumbleweed Pet Poo Worm Farm centrally in the hole.
6. Pack approximately 50% of the prepared bedding block around the outside of the unit.
7. Pack the remaining 50% in the bottom of inside the Pet Poo Worm Farm – remember the bedding is a home for your composting worms to live in whilst they process the pet waste.



8. Using the left over soil, back fill the surrounding outside of the hole, ensuring the flange is buried just below ground level. Ensure you don't bury the unit too deep, as you will restrict the movement of the pedal.

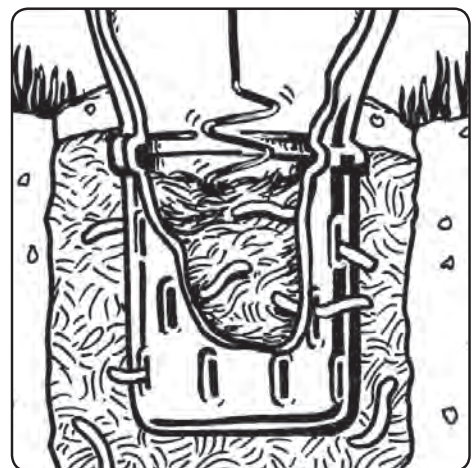


9. Your Tumbleweed Pet Poo Worm Farm is now ready to add worms. Just like a worm farm you need composting worms, not garden worms. Add a minimum of 2000 composting worms on top of the bedding inside the unit to ensure the system gets going quickly and efficiently. At this point make sure your worms are well watered – Do not let your system dry out. You can source your worms through tumbleweed at www.tumbleweed.com.au



Note: You can add all of the cardboard packaging that your Tube-O-Worms comes in to your Pet Poo Worm Farm and send back to Tumbleweed the two plastic end caps for recycling.

10. Leave the Pet Poo Worm Farm for approximately 1 week, for the worms to adjust to their new home. Then start adding small amounts of pet droppings mixed with food scraps from the kitchen and sprinkle with Tumbleweed Worm Farm & Compost Conditioner. Gently mix with Compost Mate. Over a period of a month, slowly reduce the amount of kitchen scraps until you are just feeding pet droppings only.



Free Manuals Download Website

<http://myh66.com>

<http://usermanuals.us>

<http://www.somanuals.com>

<http://www.4manuals.cc>

<http://www.manual-lib.com>

<http://www.404manual.com>

<http://www.luxmanual.com>

<http://aubethermostatmanual.com>

Golf course search by state

<http://golfingnear.com>

Email search by domain

<http://emailbydomain.com>

Auto manuals search

<http://auto.somanuals.com>

TV manuals search

<http://tv.somanuals.com>