

User guide.



verizon[✓]

 **motoZ** | DROID
FORCE

Check it out

When you're up and running, be sure to explore what your phone can do.

- **Transform:** Turn your phone into a movie projector, a boombox, a battery powerhouse, and more. See “**Moto Mods™**” on page 9.
- **Watch:** Experience crisp, clear photos, movies, and videos on your 5.5" Quad HD display. See “**Photos & videos**” on page 45.
- **Automate:** Optimize and customize your phone with the Motorola Experience. See “**Discover your Moto app feature**” on page 13.
- **Connect:** Reach out and connect with Wi-Fi networks, Bluetooth® devices, or just by touching NFC phones. See “**Connect & transfer**” on page 51.

Tip: You don't need to carry this guide with you. You can view all of these topics in your phone—from the home screen tap Apps  >  **Help**.

Contents

| | |
|---|-----------|
| Check it out | 1 |
| At a glance | 2 |
| Start | 5 |
| Home screen & apps | 10 |
| Control & customize | 17 |
| Calls | 27 |
| Contacts | 30 |
| Messages | 33 |
| Type | 37 |
| Organize | 39 |
| Google Apps™ | 41 |
| Browse | 43 |
| Photos & videos | 45 |
| Play Music | 48 |
| Locate & navigate | 50 |
| Connect & transfer | 51 |
| Protect | 60 |
| Want more? | 63 |
| Copyright & Trademarks | 64 |



At a glance

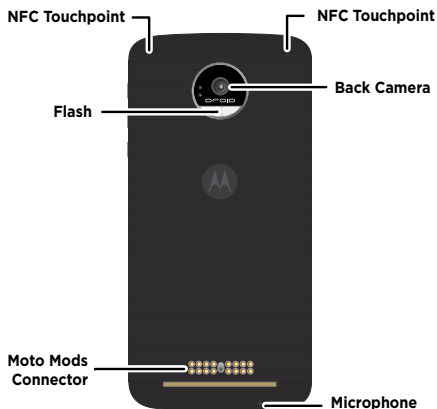
First look

Let's get started. We'll guide you through startup and tell you a bit about your phone's features.

Note: Software updates happen frequently, so your phone may look a little different.

Tips & tricks

- **Start:** The SIM card is pre-installed in your phone. Just charge up and power on, then follow the screen prompts to set up your phone. See "**Start**" on page 5.
- **Top topics:** Just want a quick list of what your phone can do? See "**Hot topics**" on page 3.
- **Help:** All your questions about your new phone answered right on your phone. Tap Apps  >  **Help**. Want even more? See "**Get help & more**" on page 63.



Note: Certain apps and features may not be available in all countries.

SAR This product meets the applicable national or international RF exposure guidance (SAR guideline) when used normally against your head or, when worn or carried, at a distance of 1.0 cm from the body. The SAR guideline includes a considerable safety margin designed to assure the safety of all persons, regardless of age and health.

Caution: Before using your phone, please read the Legal Guide by tapping Apps  >  **Settings** > **Legal information**.

Hot topics

Check out what your phone can do.

| | |
|--|--|
| Find these fast: Wi-Fi, airplane mode, flashlight, and more. | "Quick settings" on page 21. |
| Choose new wallpaper, sounds, and more. | "Redecorate your home screen" on page 20. |
| More megapixels for clearer photos. | "Take photos" on page 46. |
| Access the internet. | "Browse" on page 43. |
| Browse, shop, and download apps. | "Download apps" on page 14. |
| Keep your info safe. Set up your password and more. | "Protect" on page 60. |
| Never get lost again. | "Locate & navigate" on page 50. |
| Save data charges. Use Wi-Fi. | "Wi-Fi Networks" on page 53. |
| Stuck? Confused? | "Help & more" on page 11. |

Shattershield™

Your phone display is guaranteed* not to crack or shatter. But be careful—you still need to guard against scratches and other minor damage.

Find out more about this innovative display and how to care for it by visiting motorola.com/shattershield.



- * The display and embedded lens are warranted against shattering and cracking for four (4) years from the original date of purchase; scratches or other damage to the replaceable protective lens is not covered by this warranty. This phone is not shockproof or designed to withstand all damage from dropping. All other warranty exclusions, including scratches and other cosmetic damage, intentional damage or abuse, normal wear and tear and other limitations apply; see Limited Warranty at www.motorola.com for details.

Start

Put in the cards & power on

Your 4G nano SIM card is already installed in your phone. If you need to replace the SIM card or insert an optional microSD memory card, follow these instructions.

Caution: Make sure you use the correct size SIM card, don't cut the SIM card, and don't use an adapter with your SIM card.

1. Use the tool to pop out the SIM/memory card tray.



2. Put the nano SIM card and optional microSD memory card in the tray with the gold contacts facing up.



3. Push the tray back into your phone.



Use the TurboPower™ charger to charge up or top up your phone fast. Your phone shows the charge level as it charges.



To turn on your phone, press and hold the Power button until the screen turns on.



Warning: Please use only an approved charging accessory to charge your phone. Improper handling of the charging port, as well as the use of an incompatible charger, may cause damage to your phone and void the warranty.

Battery life

Your phone processes tons of information and apps at 4G LTE speed. Depending on what you use, that can take a lot of power.

When your phone is stationary, not charging, or not in use for a period of time, unnecessary background processes are shut down to optimize battery life.

To see what's using up battery power, tap Apps (☰) > ⚙️ **Settings** > **Battery**.

To help improve battery life, tap Apps (☰) > ⚙️ **Settings** > **Battery** > Menu (☰) > **Battery saver**.

Tip: To quickly open **Settings**, swipe the status bar or lock screen down with two fingers and tap ⚙️.

Tips & tricks

To save even more battery life between charges, you could reduce:

- Wi-Fi and Bluetooth® use: Tap Apps (☰) > ⚙️ **Settings** > **Wi-Fi** or **Bluetooth** and tap the switch at the top to turn them off when you don't need them.
- GPS use: Tap Apps (☰) > ⚙️ **Settings** > **Location** > **Mode** > **Battery saving** to turn off GPS tracking.
- Display brightness: Tap Apps (☰) > ⚙️ **Settings** > **Display** > **Brightness level** and drag the brightness slider left. Make sure **Adaptive brightness** is also turned on.

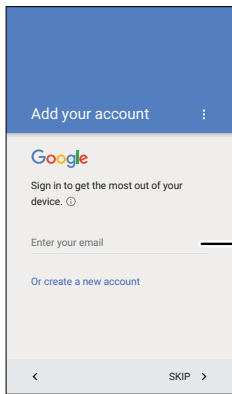
- Display timeout delay: Tap Apps (☰) > ⚙️ **Settings** > **Display** > **Sleep** > (*shorter setting*).
- Activity of seldom used apps: Tap Apps (☰) > ⚙️ **Settings** > **Battery**, then tap Menu (☰) > **Battery optimization** > **All apps**. Tap the app you want to adjust, then tap **Optimize**.
- Widgets that stream information to your home screen, like news or weather.
- Unused online accounts that you registered: Tap Apps (☰) > ⚙️ **Settings** > **Accounts**. Tap the account you want to remove. Tap it again, then tap Menu (☰) > **Remove account**.
- Recording or watching videos, listening to music, or taking pictures.

Warning: Don't try to remove or replace the battery yourself—doing so may damage the battery and could cause burning and injury. If your phone becomes unresponsive, try a reboot—press and hold the Power button until the screen goes dark, and your phone restarts.

Setup Wizard

After you power on, let the Setup Wizard walk you through the registration process. Just select your language and follow the screen prompts to get started.

If you use Gmail™, you already have a Google™ account—if not, you can create an account during setup. Signing into your Google account lets you access, sync, and backup your stuff. See your Google apps, contacts, calendar, photos, and more.



Sign in to access and sync your contacts, calendar, and photos.

Tips & tricks

- **Wi-Fi network:** For faster Internet access or to conserve mobile data use, swipe the status bar down with two fingers, then tap > **Wi-Fi**. There's more in “**Wi-Fi Networks**” on page 53.
- **Accounts:** To add, edit, or delete accounts, tap Apps > **Settings** > **Accounts**. To set up email accounts, see “**Gmail**” on page 34 and “**Email**” on page 35.

For help with your Google account, visit www.google.com/accounts.

Note: This phone supports apps and services that may use a lot of data, so make sure your data plan meets your needs. Contact your service provider for details.

Verizon Cloud

During setup you can choose to back up your contacts, messages, photos and more on Verizon Cloud, and view them anytime, anywhere on any device. Your content can be easily restored if your phone is lost or damaged, or if you get a new phone.

Old phone to new phone

If you used Verizon Cloud on your old phone, copying your personal stuff from your old phone to your new phone is easy.



On your old phone: Tap Apps > **Cloud**, then tap **Start Transfer** > **Copy content FROM this phone**.



Tap this option on your old phone to get started.

Tips & tricks

- While you're copying content, you can keep using your phone.
- Signing in to your Google account copies your apps if they are backed up to the cloud.
- For phones that support copying music, not all music can be copied. (If you want to know more, you can search online to learn about digital rights management or DRM-protected files.)

On your new phone: Tap Apps  >  **Cloud**, then tap **Start Transfer** > **Copy content TO this phone**. Follow the instructions to copy your content from the cloud to your new phone.

Moto Mods™

Transform your phone into a movie projector, a boombox, a battery powerhouse, and more.

Swap out Moto Mods throughout the day to get the performance you need when you want it, and add new Moto Mods to your collection at any time.

Note: Enjoy the Moto Style Shell included with your phone. Moto Mods are sold separately. View the complete collection at verizonwireless.com or www.motomod.com.

Caution: Remove the Moto Style Shell or other Moto Mod before adding a case that covers the back of the phone.



Rapid charging

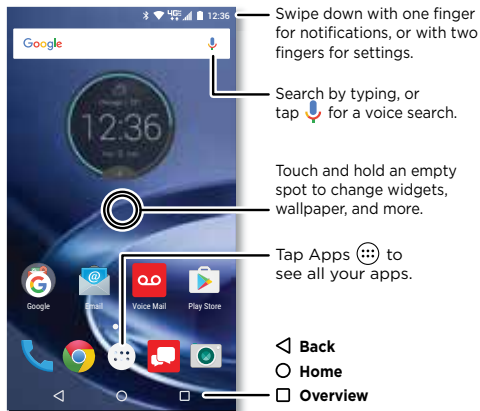
Charge your phone quickly with the Wall/USB-C 28.5W TurboPower™ Charger.

Note: Your phone comes with a TurboPower™ USB-C 3A-compliant charger for the fastest charging speeds. Using other chargers with a USB-C connector is not recommended and can slow charge speed. Avoid incompatible USB-B (micro USB) chargers and uncertified adaptors and cables, as they may damage your phone.

Home screen & apps

Quick start: Home screen & apps

The home screen is what you see when you turn on your phone. From here you can explore apps and more.





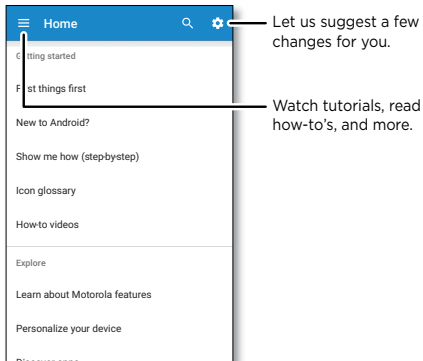
Tips & tricks

- **Open app list:** Tap Apps , then swipe down to scroll through apps.
- **Return:** To return to the home screen from any location, tap Home .
- **Pages:** To add a page, drag an app to the right side of the screen until you see a white bar. You can add multiple pages. To see other pages of shortcuts and widgets (if available), swipe the home screen left.
- **Settings:** To quickly open common settings, swipe the status bar down with two fingers. To open more settings, tap .
- **Shortcuts:** Tap Apps , touch and hold an app, then drag it to one of your home screen pages. To see all your apps, tap Apps .
- **Apps:** To remove an app from a home screen page, touch and hold the app, then drag it to **Remove**. (The app isn't removed from your phone, just the home screen.)
To uninstall apps from your home screen, touch and hold the app, then drag it to Uninstall. (You can't uninstall some apps. See "**Take care of your apps**" on page 15.)
Tip: To quickly view app info, tap Apps , touch and hold the app, then drag it to **App info**.
- **Customization:** For more about changing your home screen, see "**Redecorate your home screen**" on page 20.


Help & more

Watch a tutorial. Read a how-to. Find out anything about your phone.


Find it: Apps  >  Help



Search

At the top of the home screen, tap the Google™ search box for a text search, or say your launch phrase or tap  to search by voice. See “**Moto Voice**” on page 14 for details.

When you type, suggestions appear below the search field:

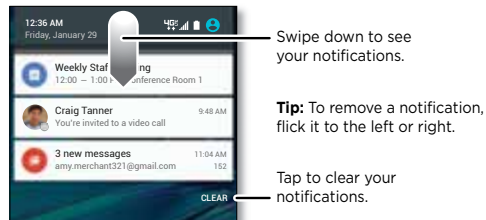
- To search for a suggestion, tap it.
- To search for text in the search field, tap  on the keyboard.

Tip: To close the keyboard, tap .

Status & notifications





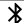





At the top of the screen, icons on the left notify you about new messages or events. If you don't know what an icon means, swipe the status bar down for details.

Tip: Getting too many notifications? Touch and hold a notification to see which app is sending them to you. Then you can turn them off.




Tip: To quickly change common settings, swipe the status bar down with two fingers. For more, see “**Quick settings**” on page 21.

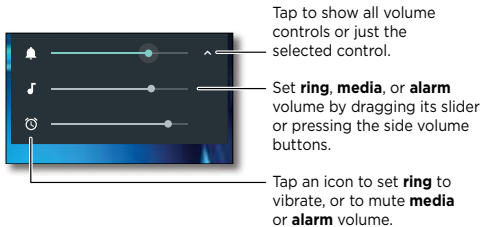
Icons at the top right of the screen tell you about phone status:

| | |
|---|--|
|  network strength |  do not disturb |
|  Wi-Fi in range/connected |  Vibrate |
|  Bluetooth® on/connected |  priority |
|  airplane mode |  alarm set |
|  battery charging/full |  warning |

Note: Apps you download on Google Play™ Store might show other icons in the status bar to alert you to specific events.

Volume & interruptions

Press the side volume buttons up or down to select a ringer volume from high to vibrate .



Tap an option under the volume slider to select which interruptions and alarms you want to receive.

Do not disturb



To turn off some or all sounds, swipe the status bar down with two fingers and tap **Do not disturb**. Select one of these options:

- **Total silence:** Turn off all sounds and alarms. Override sound settings from other apps. Set how long to stay in this mode, or choose indefinitely.
- **Alarms only:** Set how long you want to only hear alarms, or choose indefinitely. Tap **MORE SETTINGS** to customize which other interruptions to receive.
- **Priority only:** Set how long you want to only hear priority interruptions, or choose indefinitely. Tap **MORE SETTINGS** to customize which interruptions to receive.

Tip: To create an exception for repeat callers that allows a call from the same person within a 15 minute period, tap **MORE SETTINGS > Priority only allows > Repeat callers**.

Discover your Moto app feature

The Moto app can simplify life and help you out. Just follow the prompts to find out more.



Find it: Apps  >  **Moto**

- **Actions:** Learn how to open your camera with two twists of your wrist using Quick Capture (see “**Photos & videos**” on page 45). Or, use Lift for Moto Voice to say and hear commands discreetly.
- **Voice:** Set your custom launch phrase and control your phone with your voice. See “**Moto Voice**” on page 14 for details.
- **Display:** See messages, calls, and other notifications—even if your phone is asleep.

Tip: Want to hide sensitive or private notifications? Use this option to set which apps can show notifications, and how much to display.

Note: Your phone may not have all features.





Tip: Want to hide sensitive or private notifications? Tap Apps  >  **Moto > Display** and set which apps can show notifications and how much to display.

Moto Voice

Your phone is always ready for you. Use your voice to control your phone, even when it's not within reach.

Find it: Apps  >  **Moto** > **Voice**

Tap **Setup launch phrase**, then follow the prompts to create your launch phrase, like “OK Droid.”

- **Use it:** Say your launch phrase, then “What’s up?” to hear notifications without unlocking your phone, or “Voicemail” to listen to messages. If you misplace your phone nearby, say “Find my phone” to make your phone ring.
- **Get help:** Tap Apps  >  **Help**. For more commands, say your launch phrase, then “Help me.”

Tip: You can use your voice to control apps like Facebook®, Whatsapp™, and YouTube™.


Note: When prompted to turn on the Moto Voice service in Accessibility settings, tap **Yes**.



Download apps

Google Play™


Get music, movies, books, apps, games, and more.

Find it: Apps  >  **Play Store**

- **Find:** To search for apps, tap .
- **Download:** To download an app you found, tap it to see details, then tap **INSTALL** or the price.

- **Share:** To share an app you found on Google Play, tap it to see details and then tap .
- **Reinstall:** To show or reinstall apps you downloaded from Google Play, tap  > **My Apps**.
- **Use a computer:** To find and manage apps from any computer, go to <http://play.google.com> using your Google account and password.

There, you can browse apps on the big screen, manage your apps across multiple devices (like a phone and tablet), and even set new apps to download to your devices.



- **Enjoy music, movies, and more:** You can also use Google Play to download music, movies, TV shows, and more. See “**Play Music**” and “**Play Movies & TV**” apps.
- **Get help:** To get help and more, tap .

Apps from the web

You can get apps from other online app stores using your browser.

Tip: Choose your apps and updates carefully, as some may impact your phone’s performance—see “**Choose carefully**” on page 15.

Note: When installing an app, make sure you read the alerts that tell you what information the app will access. If you don’t want the app to access to this information, cancel the installation.

To let your phone install apps that are not on Google Play, tap Apps  >  **Settings** > **Security**, then tap the **Unknown sources** switch to turn it on.

For information about downloading files from your browser, see “**Downloads**” on page 44.

Choose carefully



Here are a few tips:




- To help prevent spyware, phishing, or viruses, use apps from trusted sites, like Google Play.
- In Google Play, check the app’s ratings and comments before installing.
- If you doubt the safety of an app, don’t install it.

- Apps use up memory, data, battery, and processing power—some more than others. If you’re not happy with how much memory, data, battery or processing power an app is using, uninstall it.
- Monitor children’s access to apps to help prevent exposure to inappropriate content.
- Certain apps may not provide completely accurate information. Take care, especially when it comes to personal health.

Set app permissions



You will only be asked for permissions when you use a feature in an app, instead of immediately when you install the app.


To modify the app permissions settings at any time, tap Apps  >  **Settings** > **Apps**, then select the app and tap **Permissions**.

To modify the app permissions by app type (such as Calendar or Camera) at any time, tap Apps  >  **Settings** > **Apps**, then tap  **Settings** > **App permissions**.

Take care of your apps

Find it: Apps , then swipe up to scroll through apps







To close the apps screen, tap Home  or Back .

- **Uninstall apps:** To remove an app from a home screen page, touch and hold the app, then drag it to  **Remove**. (The app isn’t removed from your phone, just the home

screen.) Tap Apps  >  **Settings** > **Apps**. Tap an app, then tap **DISABLE** or **UNINSTALL** (if available).

DISABLE removes the app from your menu—to enable it, reopen this window and tap **ENABLE** (disabled apps are at the bottom of the list).

If an app locks up your phone as soon as you turn it on, restart in Safe Mode: Press and hold the Power button. When you see the **Power off** option, press and hold it to select the **Reboot to safe mode** option. Your phone restarts with **Safe mode** in the lower left. Then, try removing the app.



- **Reinstall apps:** To reinstall apps from Google Play, tap Apps  >  **Play Store**, then tap  > **My Apps & games**. The apps you downloaded are listed and available for download.
- **See app details:** Tap Apps , touch and hold an app, then drag it to **App info**.
- **See app data usage:** To show which apps are using the most data, tap Apps  >  **Settings** > **Data usage**. For more, see “**Data use**” on page 55.

Update your phone

Use your phone or computer to check, download, and install phone software updates:

- Using your phone:

If your phone notifies you about an update, follow the instructions to download and install it.

To manually check for updates, tap Apps  >  **Settings** > **System updates**.

Your phone downloads updates over your Wi-Fi connection (if available) or mobile network. We recommend that you download updates over a Wi-Fi connection. Remember, these updates can be quite large (25MB or more) and may not be available in all countries. If the mobile network updates are not available in your country, update using a computer.

Note: When updating your phone, make sure you have enough battery power to complete the update.

- Using your computer:

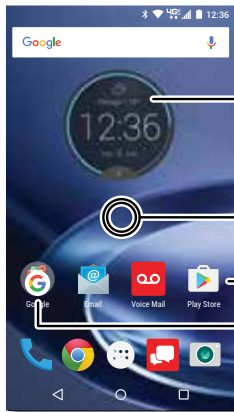
On your computer, go to www.motorola.com/update.

Control & customize

Quick start: Control & customize

Take control of your phone.

- **Touch, press, and speak:** Learn phone gestures and commands. See “**Controls and gestures**” on page 17.



Tap a widget to open it. Touch and hold to move, resize, or remove it.







Touch and hold an empty spot to change wallpaper.

Tap a shortcut to open. Touch and hold to move or delete.

Drag shortcuts on top of each other to make a folder.

- **Customize your home screen:** To put widgets like a clock, interactive calendar, and more on your home screen, see “**Redecorate your home screen**” on page 20.

Tips & tricks

- **Speak:** Tap  in a search window, or  on a keyboard.
- **Add a home screen page:** Drag an app icon to the right side of the home screen until you see a white bar. You can add multiple pages.
- **Quick settings:** To change **Wi-Fi**, **Bluetooth**, **Airplane mode**, and other settings, swipe the status bar down with two fingers. For even more settings, tap .
- **Can't find a setting?** Tap Apps  >  **Settings** > .

Controls and gestures

Touch

Find your way around:

- **Tap:** Choose an icon or option.
- **Touch and hold:** See more options.
- **Drag:** Move items on the home screen.
- **Flick:** Quickly open or delete items.
- **Swipe:** Scroll through lists or between screens.
- **Pinch or double-tap:** Zoom in and out on websites, photos, and maps.

- **Twist:** Twist a map with two fingers to rotate it, and pull two fingers down to tilt it.
- **Twist the wrist:** Holding the phone securely, twist your wrist to open your camera. See “**Photos & videos**” on page 45.
- **Chop twice:** Holding the phone securely, make a chopping motion to turn on the flashlight. See “**Quick settings**” on page 21.
- **Turn over:** Place your phone face down to set it to Do Not Disturb mode. See “**Discover your Moto app feature**” on page 13.
- **Lift to silence:** Pick up your phone when it’s ringing to silence the ring and switch to vibrate. See “**Discover your Moto app feature**” on page 13.
- **Back:** Tap Back ◀ to go to the previous screen.
- **Home:** Tap Home ○ to return to the home screen.
- **Overview:** Tap Overview □ to see your recent apps (or browser tabs), and tap an app to reopen it. To remove an app from the list, swipe it left, right or tap ✕. To scroll the list, swipe up or down.
Tip: You don’t need to remove apps from Overview for your phone to run efficiently.
- **Menus:** When ⋮ or ≡ appears on a screen, you can tap it to open options for the current screen.
- **Close Keyboard:** To close a keyboard, tap ▾.

- **Reboot:** To reboot your phone, press and hold the Power button until the screen goes dark and your phone restarts.

Press

Power button

Your Power button helps in a few ways.

- **Power off:** Press and hold the Power button, then tap **Power off**.
- **Sleep:** To conserve battery power, prevent accidental touches, or when you want to wipe smudges off your touchscreen, put the touchscreen to sleep by pressing the Power button.
- **Wake up:** Press the Power button again.
- **Reboot:** To reboot your phone, press and hold the Power button until the screen goes dark and your phone restarts.



Tip: To add security to your phone, see “**Protect**” on page 60.

Volume buttons

Your volume buttons help in a few ways:

- **Ringer volume:** Press the buttons when your phone is ringing to silence it.
- **Earpiece volume:** Press the buttons during a call.

- **Music/video volume:** Press the buttons during a song or video.

Tip: For more on volume control, see “**Volume & interruptions**” on page 12.

Speak


Just tell your phone what you want.



Tip: Speak naturally but clearly, like using a speakerphone.


- **Dialing and commands:** Say your launch phrase to control your phone by voice. See “**Moto Voice**” on page 14 for details.

To dial, say “Call” and then a contact name or phone number. Or, say a command like “Send text,” “Go to” an app, or “Help” for voice command help.

Tip: If a contact has more than one number, you can say which number to call (for example, “Call Joe Black Mobile” or “Call Suzi Smith Work”).

- **Search:** Tap  on the home screen to search by voice, or say your launch phrase to speak your search.

To change your voice input and text-to-speech settings, tap Apps  >  **Settings** > **Language & input**.

- **Text entry:** On a keyboard, tap , then speak your message or search text. You can also speak punctuation.

Tip: To make your phone read out loud, see “**TalkBack**” on page 22.

On, off, lock & unlock






Your touchscreen is on when you need it and off when you don't. To turn the screen on, press the Power button.



Touch and hold, then swipe right for voice assist.

Drag up to unlock your screen.

Touch and hold, then swipe left to open the camera.

- **Screen off and on:** Press the Power button to turn the screen off and on.
- **Screen lock:** To unlock the screen, touch  and drag up. To use a pattern, PIN, or password to unlock your screen, tap Apps  >  **Settings** > **Security** > **Screen lock** (see “**Screen lock**” on page 60). You can also use the fingerprint sensor on your phone. After you set it up, you'll see it on the unlock screen instead of the regular lock.
- **Notifications:** Double tap a notification in the lock screen to open it. You'll be prompted to enter your password.
Tip: To prevent notifications from appearing in the lock screen, tap Apps  >  **Settings** > **Sound & notification** > **When device is locked** > **Don't show notifications at all**.

- **Owner info:** To add a message to your lock screen, tap Apps (☰) > ⚙️ **Settings** > **Security** > **Lock screen message**. To set your message, tap Back (◀).
- **Tip:** Don't put your mobile number as your contact info unless you can access your voicemail from another device.
- **Screen timeout:** To change your timeout (screen locks automatically), tap Apps (☰) > ⚙️ **Settings** > **Display** > **Sleep**.

Customize sounds and appearance

Customize your phone's sounds and display settings:

- **Ringtone and notifications:** Tap Apps (☰) > ⚙️ **Settings** > **Sound & notification**.
- **Vibrate or silent:** To make your phone vibrate for incoming calls, tap Apps (☰) > ⚙️ **Settings** > **Sound & notification** > **Also vibrate for calls**. To turn off ringtones for incoming calls, tap Apps (☰) > ⚙️ **Settings** > **Sound & notification** > **Phone ringtone** > **None**.
- **Ringtone for a contact:** To set a personal ringtone for a contact, tap Apps (☰) > 👤 **Contacts**, tap the contact, then tap ✎ > Menu (⋮) > **Set ringtone**.
- **Display settings:** To change brightness, animation, and other display settings, tap Apps (☰) > ⚙️ **Settings** > **Display**.
- **Rotate:** In many apps, the touchscreen switches from portrait to landscape when you rotate your phone. To turn

this on or off, swipe the status bar down with two fingers and tap **Auto-rotate** or **Portrait**.

- **Language and region:** To set your menu language and region, tap Apps (☰) > ⚙️ **Settings** > **Language & input** > **Language**.

Redecorate your home screen

For quick access to your favorite things, customize your home screen the way you want.

- **Change wallpaper:** Touch and hold an empty spot on the home screen, then tap **WALLPAPERS**.
- **Add a home screen page:** Drag an app to the right side of the home screen until you see a white bar. You can add multiple pages.
- **Add shortcuts:** Tap Apps (☰), touch and hold an app, then drag it to one of your home screen pages. To see all your apps, tap Apps (☰) and swipe up.
- **Create shortcut folders:** Drag one shortcut onto another. Add more shortcuts by dragging them onto the first shortcut. To name the folder, tap it and enter a name below the apps.
- **Add widgets:** Touch and hold an empty spot on the home screen, tap **WIDGETS**, touch and hold a widget, then drag it to your home screen.
- **Resize widgets:** You can resize some widgets—touch and hold a widget until you feel a vibration, then release. Drag the white circles at the edges to resize.

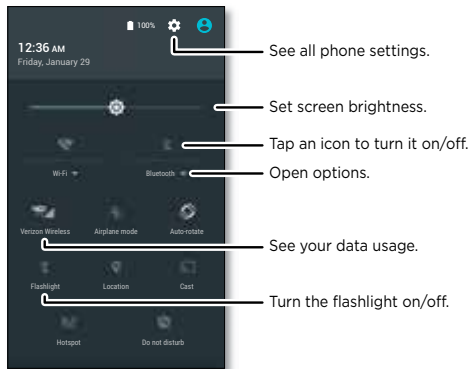
- **Move or delete widgets & shortcuts:** Touch and hold a widget or shortcut until you feel a vibration (or see the icon expand if vibrate is turned off). Then drag it to another spot, another page, or **X Remove**.

Note: Removing a shortcut from your home screen doesn't uninstall the app from your phone.

Quick settings

For quick access to **Wi-Fi, Bluetooth, Airplane mode**, brightness, and other settings, swipe the status bar or lock screen down with two fingers. For even more settings, tap .

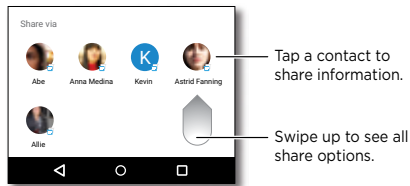
Note: Your quick settings may look a little different.



Direct Share

In some apps, you can share something directly to a contact or conversation.

When you select the share option within an app, a list of contacts with app icons will pop up. Then select the contact and send.




Accessibility

See, hear, speak, feel, and use. Accessibility features are there for everyone, helping to make things easier.

Find it: Apps  >  **Settings** > **Accessibility**



Note: For general information, accessories, and more, visit www.motorola.com/accessibility.

Voice recognition

Just tell your phone what you'd like to do—dial, browse, search, send a text, and more. Check it out—say your launch phrase to control your phone by voice or ask your phone a question (see **“Moto Voice”** on page 14 for details). Tap  at the top of the home screen for voice search.

TalkBack

Use TalkBack to read your screen out loud—your navigation, your selections, even your books.

To turn on TalkBack, tap Apps  >  **Settings** > **Accessibility** > **TalkBack**, then tap the switch to turn it on.

Tip: When you turn on TalkBack for the first time, your phone asks if you want to **Enable Explore by touch?** For more information on how to navigate using Explore by Touch see **“Explore by Touch”**.



Note: You might need to download text-to-speech software (data charges may apply).

To use TalkBack:

- **Menus and screens:** Tap an item in a menu or screen. Your phone speaks the name.
- **Dialer & text entry:** Start typing. Your phone speaks each number or letter.
- **Notifications:** Drag the status bar down. Your phone speaks all of the notifications.
- **Books & more:** Open a book, file, message, and more. Your phone reads the text out loud (app dependent).
- **Browsers:** Enable web pages in your browser to be read out loud. Move between pages, paragraphs, lines, words, or characters.

Tip: Navigate through your apps and menus to hear how voice readouts work on your phone.

Tip: When Explore by Touch is on (see next section), swipe down then right to open the global context menu, then use the menu to pause TalkBack.

To turn off TalkBack, tap Apps  >  **Settings**
> **Accessibility** > **TalkBack**, then tap the switch to turn it off.

Explore by Touch



Use Explore by Touch to expand TalkBack, and have your touches read out loud as you move your finger around the screen.

To turn on Explore by Touch when TalkBack is active, tap Apps  >  **Settings** > **Accessibility** > **TalkBack** > **SETTINGS**
> **Explore by touch**.

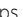

Tip: When you turn on TalkBack for the first time, your phone asks if you want to **Enable Explore by Touch?** Tap **OK** to turn it on.



Explore by Touch changes your phone's touch gestures so the location of your touches can be read out loud.

- **Tap** something on the screen to hear a description or text readout.
- **Double-tap** anywhere on the screen to open or activate the last touched item.
- **Swipe** using two fingers to scroll through lists or between screens.

Shortcut gestures let you navigate your phone with simple swipe gestures (for example, swipe up then left in a single motion to go to the home screen). To see or change these shortcuts, tap Apps  >  **Settings** > **Accessibility**
> **TalkBack** > **SETTINGS** > **Manage gestures**.







Note: The way these gestures are interpreted is specific to TalkBack. Other accessibility services may use the same gestures for different actions.

To learn more about navigating your phone with Explore by Touch, tap Apps  >  **Settings** > **Accessibility** > **TalkBack**
> **SETTINGS** > **Launch "Explore by touch" tutorial**.

To turn off Explore by Touch when TalkBack is active, tap Apps  >  **Settings** > **Accessibility** > **TalkBack**
> **SETTINGS**, and uncheck **Explore by touch**.



Braille

Combine your Braille display with TalkBack for braille and speech feedback.

- 1 Download the BrailleBack app on Google Play™ (tap Apps  >  **Play Store**), and install it on your phone.
- 2 Tap Apps  >  **Settings** > **Accessibility** > **BrailleBack**.
- 3 Turn on your Braille display and put it in Bluetooth® pairing mode.
- 4 On your phone, tap Apps  >  **Settings** > **Bluetooth**, then tap the switch at the top to turn it on and scan.







- 5 Tap the name of your Braille display to pair it with the phone.

Accessibility shortcut

Use simple gestures to quickly activate Talkback and other accessibility features on your phone. For more information, tap Apps  >  **Settings** > **Accessibility** > **Accessibility shortcut**.

Caller ID

When you want to hear who's calling:

- **Read out loud:** Have your caller announced. Tap Apps  >  **Settings** > **Accessibility** > **Talkback** > **SETTINGS** > **Speak Caller ID**.
- **Ringtones:** Assign a unique ringtone to a contact. Tap Apps  >  **Contacts**, tap the contact, tap , then tap Menu  > **Set ringtone**.

Volume & vibrate












Find it: Apps  >  **Settings** > **Sound & notification**

- Drag the volume sliders to set volume levels for your music or videos, alarms, and ringtones/notifications.
- To make your phone vibrate for incoming calls (even when the ringer is silent), tap **Also vibrate for calls**.

Tip: For more on volume control, see “**Volume & interruptions**” on page 12.

Zoom



Get a closer look.

- **Pinch to zoom:** Pinch to zoom on maps, web pages, and photos—to zoom in, tap the screen with two fingers and then drag them apart. To zoom out, drag your fingers together.
Tip: To zoom in, you can also double-tap.
- **Screen magnification:** Triple tap the screen for full screen magnification, or triple tap and hold to temporarily magnify. Tap Apps  >  **Settings** > **Accessibility** > **Magnification gestures**.
- **Big text:** Show bigger text throughout your phone. Tap Apps  >  **Settings** > **Accessibility** > **Large text**.
Tip: You can also tap Apps  >  **Settings** > **Display** > **Font size** > **Huge**.
- **High contrast text:** Show higher contrast text throughout your phone. Tap Apps  >  **Settings** > **Accessibility** > **High contrast text**.
- **Browser:** Choose text scaling and other accessibility settings for your browser. Tap Apps  >  **Chrome** > Menu  > **Settings** > **Accessibility**.
Tip: Select **Force enable zoom** to allow zooming on all web pages.



Display brightness

Your phone automatically adjusts the screen brightness when you're in bright or dark places. But you can set your own brightness level instead:

Swipe the status bar or lock screen down with two fingers, and drag the slider to set brightness level.




Note: Setting brightness to a high level decreases your phone's battery life. To maximize battery life, tap Apps  >  **Settings** > **Display** > **Adaptive brightness** to let your phone automatically adjust brightness for the available light.

Touchscreen & keys

To hear or feel when you tap the screen, tap Apps  >  **Settings** > **Sound & notification** > **Other sounds**:

- **Dial pad:** To hear a tone when you dial a number, select **Dial pad tones**.
- **Screen lock:** To hear a click when you lock or unlock the screen, select **Screen locking sounds**.
- **Charging:** To hear a sound when you plug in the charger, select **Charging sounds**.
- **Touchscreen:** To hear a click when you tap something on the screen, select **Touch sounds**.
- **Keys:** To feel a vibration when you tap the keyboard, select **Vibrate on touch**.



Messages

To make text entry even easier, use features like auto-capitalization, auto-correction, and more. Tap Apps  >  **Settings** > **Language & input** > **Google Keyboard** > **Preferences** or **Text correction**. Of course if you don't want to type at all, then use your voice—tap  on the keyboard.

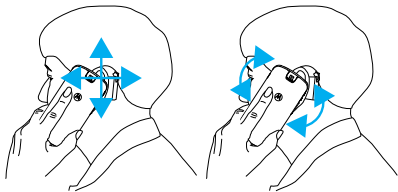
Hearing aids

To help get a clear sound when using a hearing aid or cochlear implant, your phone may have been rated for use with hearing aids. If your phone's box has "Rated for Hearing Aids" printed on it, then please read the following guidance.


Note: Ratings are not a guarantee of compatibility (visit www.motorola.com/hacphones). You may also want to consult your hearing health professional, who should be able to help you get the best results.

- **Settings:** Tap  **Phone** > **Menu**  > **Settings** > **Accessibility** > **Hearing aids**.
- **Call volume:** During a call, press the side volume buttons to set a call volume that works for you.

- **Position:** During a call, hold the phone to your ear as normal, and then rotate/move it to get the best position for speaking and listening.



TTY

You can use your phone in TTY mode with standard teletype machines. Tap  **Phone** > Menu  > **Settings** > **Calls** > **TTY mode** and select the mode you need:

- **TTY Full:** Type and read text on your TTY device.
- **TTY HCO:** Hearing-Carry-Over—type text on your TTY device and listen to voice replies on your phone's speaker.
- **TTY VCO:** Voice-Carry-Over—speak into your phone and read text replies on your TTY device.

Note: You'll need a cable/adaptor to connect your TTY device to the headset jack on your phone.

Refer to your TTY device guide for mode and usage information.

Apps

Google Play™ has something for everyone, and many apps provide useful accessibility features.


Find it: Apps  >  **Play Store**

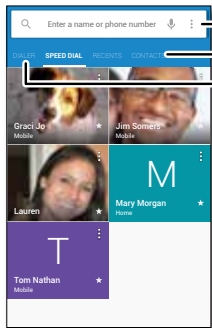
Calls

Quick start: Calls

Dial contacts, speed dial numbers, recent calls, or numbers, and search, all from one app.

Find it:  Phone

- To call a contact or recent call, tap it.
- To open the dialpad, tap **DIALER**. Enter a number, then tap  to call it.



Search your contacts.

See all your contacts.

Tap **DIALER** to dial a number.




During a call:



 **Mute**  **Speaker**



 **Bluetooth**  **Dialpad**


Tips & tricks

- **During a call:** Your touchscreen goes dark to avoid accidental touches. To wake it up, move it away from your face or press the Power button.
- **Multi-task:** While you're on a call, tap Home  to hide the call screen and look up a phone number, address, or open other apps. To reopen the call screen, swipe the status bar down and tap **Ongoing call**.
- **Contacts:** To search your contacts, tap **CONTACTS**.
- **Favorite contact:** Have someone you call all the time? Touch and hold an empty spot on the home screen, tap **WIDGETS**, then touch and hold the **Direct dial** widget. Drag it to your home screen, then select the contact. Tap the widget to dial the person.
- **Voicemail:**  appears in the status bar when you have new voicemail. To hear it, tap  **Phone** > **DIALER**, then touch and hold **1**.

Make calls



When you make a call, you have options:

- Tap  **Phone** to see your recent calls, groups, and frequently-called contacts. Select a contact or number to call it.
- To dial a number, tap **DIALER**, enter a number, then tap  to call it.





- To enter the international dialing code (+), touch and hold **0**. To add a pause or wait after numbers, tap Menu .



Note: You can make High-Definition Voice and Video calls with this phone when you add Advanced Calling to your line. Visit verizonwireless.com/AdvancedCalling to learn how.

Answer & end calls

- **Answer a call:** When your phone is locked, touch  and drag right to .

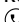

When the phone is unlocked, tap  **ANSWER**.


With call waiting on, touch  and drag to  to answer the new call, then tap  **Hold and Answer Voice** or  **Ignore**.



- **Ignore a call:** When your phone is locked, touch  and drag left to  to send the call to voicemail.

When the phone is unlocked, tap  **DISMISS**.

You can also press the Power button to ignore the call, or press a volume button to silence the ringer.

- **Respond with a text:** When your phone is locked, touch  and drag up to . Select a message to immediately send it.

- **End a call:** Tap .


- **During a call:** Tap  **Mute** on the call screen to mute the call. To hide the call screen, tap Home . To reopen it, swipe the status bar down and tap **Ongoing call**.



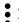

Note: When you hold your phone to your ear, the touchscreen goes dark to avoid accidental touches. When you move the phone away from your ear, the screen lights up again.

Don't use covers or screen protectors (even clear ones) that cover the proximity sensor above the touchscreen.

Recent calls

View your calls (with newest first), and then call, text, or store them:

Find it:  **Phone > RECENTS**


- To return a call, tap the caller's name or number, then tap .
- To send a text message, store the number, or other options, tap the caller's picture.
- To remove an entry from the call log, tap it, then tap **Call details >** .
- To clear the list, tap Menu  **> Call History**, then tap Menu  **> Clear call history**.


3-way calls

During a call, you can start another call, switch between them, or join them in a 3-way call:



- To answer a second call, tap  **Hold and Answer Voice** or  **Ignore**.

The first call goes on hold if you answer the second call. To switch between calls, tap **On Hold**.

- To dial a second call, tap **ADD CALL**, enter a number, then tap  to call it.




The first call goes on hold when you tap . To join the calls after the second call answers, tap **MERGE CALLS**.

Your phone number

Find it: Apps  >  **Settings** > **About phone** > **Status**
> **My phone number**.

Emergency calls

Note: Your service provider programs one or more emergency phone numbers you can call under any circumstances, even when your phone is locked. Emergency numbers vary by country. Your pre-programmed emergency number(s) may not work in all locations, and sometimes an emergency call cannot be placed due to network, environmental, or interference issues.

- 6 Tap  **Phone** (if your phone is locked, drag  up to unlock it, then tap **EMERGENCY**).
- 7 Enter the emergency number.
- 8 Tap  to call the emergency number.



Note: Your phone can use location based services (GPS and AGPS) to help emergency services find you. See “Location Services” in your Legal Guide.

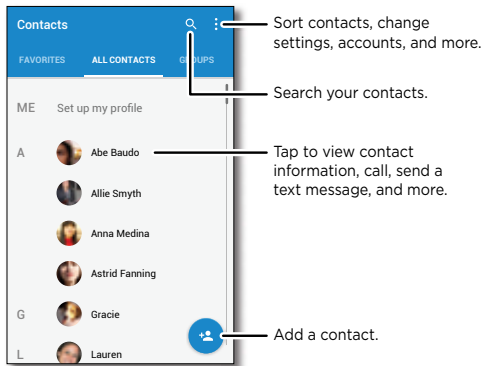
Contacts

Quick start: Contacts




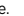

Combine information from your Google™ contacts and social networks for quick access to everyone you know.

Find it: Apps  >  **Contacts**

- **Create:** Tap .
- **Edit or delete:** Tap a contact, then tap .
- **Call, text, or email:** Tap a contact, then tap an option.

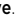


Tips & tricks

- **Search contacts:** In the **Contacts** list, tap .
Tip: Or, from the home screen, tap the Google search box and enter a contact's name.
- **Share a contact:** Tap a contact, then tap Menu  > **Share** to send it in a message or email, or use a Bluetooth® connection, Google Drive™, or Android Beam™.
Tip: In some apps, like Contacts, you can also share directly with a contact. See "**Direct Share**" on page 21.
- **Shortcuts:** Tap a contact, then tap Menu  > **Place on Home screen** to add a shortcut for the contact on your home screen.
- **Synchronize:** On your phone, tap Apps  >  **Settings** > **Accounts**, choose your Google account, then tap your account name to sync it if it has not been updated recently. You can also see these contacts at www.gmail.com.
For help with transferring contacts, see "**Verizon Cloud**" on page 7 or go to www.motorola.com/transfercontacts.

Create contacts

Find it: Apps  >  **Contacts** > 

Tap a text box to type the name and details. When you're finished, tap  **Save**.

Note: To import contacts or change where they're stored, see "**Get contacts**" on page 32.






Call, text, or email contacts


Find it: Apps  >  **Contacts**

Tap a contact to see more options. Depending on the information you have for that person, you can call, text, or send email. You can also use voice recognition (see “**Speak**” on page 19).

Favorites





Set your most-used contacts as favorites, so you can get to them faster.



- To set a favorite, tap Apps  >  **Contacts**, select a contact and tap .
- To see your favorites, tap Apps  >  **Contacts** > **FAVORITES**.

Starred contacts also appear at the top of your **SPEED DIAL** list in the  **Phone** app.

Edit, delete, or hide contacts



Find it: Apps  >  **Contacts**

- To edit a contact, tap it, then tap . Tap a field to edit it. Tap  **CHANGE** to choose or change the contact's picture.
- To set a personal ringtone for the contact, tap it, tap , then tap Menu  > **Set ringtone**.

- To delete the contact, tap it, then tap Menu  > **Delete**.
Contacts from social networks will be hidden if you tap **Delete**. To view these contacts, or delete them permanently, use the social network's app or website.
- To hide the contacts from an account in your **Contacts** list, tap Menu  > **Contacts to display**. Tap an account type to show it. Tap **Customize** to uncheck accounts you always want to hide.

Get contacts








Get all your contacts in one place.

- To add your social networking contacts, tap Apps  >  **Settings** > **Accounts**, then tap **Add account**.

Note: You'll need a social networking app first. To get apps, see "**Google Play™**" on page 14.

- To add your email contacts, see "**Gmail**" on page 34 and "**Email**" on page 35.

Tip: If you add an **Exchange** account, you can send messages to your coworkers, even if you don't have them stored in your contacts.


- To import contacts from your SIM card (if it didn't happen automatically), tap Apps  >  **Contacts** > Menu  > **Import/export** > **Import from SIM card**. Tap **OK** to confirm.
- To import contacts from your computer, upload the contacts to your Google™ account at <http://contacts.google.com>. On your phone, tap Apps  >  **Contacts** > Menu  > **Accounts** > Menu  > **Auto-sync data**. You can also see these contacts at <http://mail.google.com>.

For help with transferring contacts, see "**Verizon Cloud**" on page 7 or go to www.motorola.com/transfercontacts.

Share contacts

Send a contact in a message or email, or use a Bluetooth® connection, Google Drive™, or Android Beam™.

Find it: Apps  >  **Contacts**

To share a contact, tap it, then tap Menu  > **Share** and choose how you want to send it.

Note: You can't share your social network contacts.

My details

Find it: Apps  >  **Contacts**




To store your user profile, tap **Set up my profile** under **ME** at the top of the contact list.

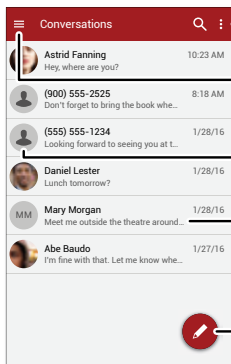
Messages

Quick start: Verizon Messages

Stay in touch with messages and pictures.

Find it:  Message+

- **Create:** Tap .
- **Attach:** When you're typing a message, tap  to attach a picture, audio, video, or more.
- **Send:** Tap  to send the message.



Filter conversations for pictures, places, contacts, and more.







Turn on driving mode, edit conversations, adjust settings, and more.




Tap a sender's picture to add them to your contacts.

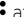
Tap a conversation to open it. Touch & hold to delete, call, and more.



Create a message.

Tips & tricks

- **Insert emojis:** Tap  to insert emojis or icons in your message.
- **Send a recorded message:** In the create message screen, touch and hold  to start recording. Speak your message, then release  to send the message.
- **Forward a message:** In a conversation, touch and hold a message for more options, such as forwarding it.
- **Save attachments:** Touch and hold a picture to save it. To see the picture, tap Apps  >  **Photos** > **Download**.
- **Voice entry:** Tap a text box, then tap  on the keyboard.


Tip: If you don't see  on the keyboard, tap Apps  >  **Settings** > **Language & input** > **Google Keyboard** > **Preferences** > **Voice input key** to activate voice entry.

- **Filter conversations:** Touch Menu  at the top right and swipe left to see all your shared media. Filter your conversations to see photos and videos, locations, links, contacts, or audio files.

- **Text your best friend:** Use a widget to text your favorite contact quickly. Touch and hold an empty spot on the home screen, tap **WIDGETS**, touch and hold **Direct message** to drag it to your home screen, then select the contact.
- **Message alert:** To show new message notifications in the status bar, tap  **Message+** >  > **Settings**, and check **Notifications**.




Read, forward & more






Find it:  **Message+**

- **Open:** Tap a conversation to open it.
- **Attachments:** When you open a message with an attachment, tap the attachment to open it, or touch and hold it to save it.
- **Reply:** Open a conversation, then enter your response in the text box at the bottom.
- **Forward:** Open a conversation, touch and hold the message you want, then tap **Forward Message**.
- **Delete:** Touch and hold a conversation, then tap **Delete Conversation**. Or, open the conversation, touch and hold one message, then tap **Delete messages**.
- **Settings:** Tap  at the top left, then tap **Settings** to change your notifications and other options.

Set your default messaging app

You can use Verizon Message+, Messaging, or Google Hangouts™ to send and receive your text messages.



To set  **Message+**,  **Messaging**, or  **Hangouts** as your default messaging app:

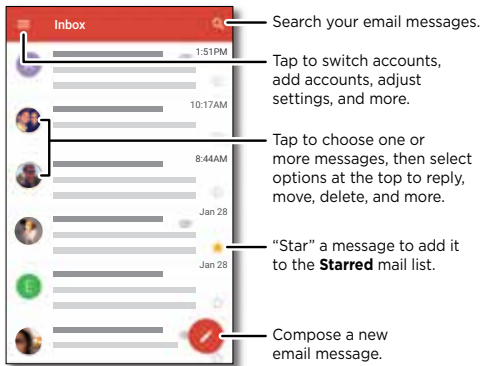
Find it: Apps  >  **Settings** > Apps >  **Message+**, or  **Messaging**, or  **Hangouts**, then **Open by default**

For more about Google Hangouts, see “**Chat using Google Hangouts™**” on page 36.

Gmail

Send and receive email from all of your personal accounts (even if they're not Google Gmail accounts). You can manage your accounts in Gmail and easily switch between them.

Find it: Apps  >  **Gmail**



- **Add Gmail accounts:** The first time you turned on your phone, you probably set up or logged in to your Google™ account—that sets up the **Gmail** app for one account. To add more Google accounts, tap Apps > **Settings** > **Accounts**, then tap **Add account** > **Google**.

Tip: In the **Gmail** app, tap > **Settings** > **Add account**.

- **Add personal email accounts:** To add other personal email accounts to the Gmail app, tap Apps > **Settings** > **Accounts** > **Add account** > **Personal (IMAP/POP)**.
- **Change account settings:** To change the settings for a Gmail or email account, tap Apps > **Gmail** > > **Settings**, then tap the account name.
- **Delete accounts:** Tap Apps > **Settings** > **Accounts** > **Google**, then tap the account name. Tap Menu > **Remove account**.

Email

You can use the Email app to send and receive email on your personal and corporate email accounts.



Find it: Apps > **Email**

- **Add personal email accounts:** Tap Apps > **Settings** > **Accounts** > **Add account** > **Email**.
- **Add corporate email accounts:** For Microsoft® Exchange server work email accounts, tap Apps > **Settings** > **Accounts** > **Add account** > **Corporate**, and enter details from your IT administrator.
- **Change account settings:** Tap Apps > **Email** > > **Settings**, then tap the account name.
- **Delete accounts:** Tap Apps > **Settings** > **Accounts** > **Email** or **Corporate**, tap the account name, then tap Menu > **Remove account**.

Chat using Google Hangouts™

Sign in with your Google account to stay in touch with friends and family.

Find it: Apps  >  **Hangouts**



- **Start a new hangout:** Tap **+**, then tap a name in your list of friends. You can send a text message, or tap  to make a video call.
- **Change settings:** Tap  to see your old hangouts, change your profile pic, other settings, and more.
- **Chat from a computer:** You can chat from a computer, too. Find out more at www.google.com/hangouts.

Wireless Emergency Alerts

Wireless Emergency Alerts, also known as CMAS or PLAN, is a U.S. national emergency alert system. Emergency alerts can pop up to tell you about a national or local crisis.



Tip: Emergency alerts have a special sound and vibration that is two seconds long, followed by one second, then another one second.

To choose which types of alerts you receive, tap Apps  >  **Settings** > **More** > **Emergency alerts**. The U.S. and local governments send these alerts through your service provider. So you will always receive alerts for the area where you are, and you won't receive alerts if you're outside of the U.S.

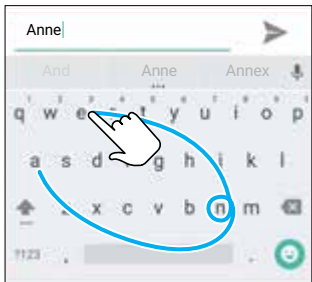
For more, visit www.ctia.org/consumer_info/safety/.

Type

Quick start: Type






When you tap a text box, like in a message or search, you have keyboard options.

- **Type or gesture:** Enter letters by touching them one at a time. Or, enter a word by tracing a path through the letters.
- **Close the keyboard:** Tap ▾.



See a different keyboard? It varies by app. This one is for texting.

Tips & tricks

- **Move the cursor:** Tap a spot in the text to place the cursor, then drag the arrow under the cursor to move it.
- **Dictionary:** To add a word you enter often, enter it, tap the word in the word list below the text box, then tap there again to add it to your dictionary.
- **Symbols:** Touch and hold a letter to enter the small number or symbol at the top of it.
To enter several numbers or symbols, tap .
- **Double letters:** Circle a letter to enter two of them.
- **Capital letters:** Tap  or drag it to the letter you want to capitalize.
- **Special characters:** Touch and hold a letter to choose from other special characters.
- **Word prediction:** While you're typing, word suggestions appear above the keyboard. Tap one to select it.
- **Voice entry:** Tap  on the touchscreen keyboard, then say what you want to type. You can speak as long as you like, pause whenever you want, and dictate punctuation.
- **Vibrate:** Don't like the vibrating keys when you type? Tap Apps  >  **Settings** > **Language & input** > **Google Keyboard** > **Preferences**.

Text entry settings & dictionary


Choose your keyboard style and edit the dictionary of words your phone suggests:

Find it: Apps  >  **Settings** > **Language & input**

- To choose your touchscreen keyboard, tap **Current Keyboard** > **CHOOSE KEYBOARDS**. To allow voice entry from the keyboard, tap **Google voice typing**.
- To change the preferences for your keyboard, tap **Google Keyboard**.
- To add or edit the words that your phone suggests and recognizes, tap **Personal dictionary**.

Cut, copy & paste













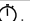
Cut, copy, and paste names, phone numbers, addresses, quotes, or anything else in a text box.



- 1** To highlight a word, touch and hold it.
To highlight more words, drag the selector at the edge of the highlight. Or to select everything, tap  > **Settings** > **SELECT ALL**.
- 2** Tap **CUT** or **COPY**
Tip: Tap **SHARE** to send the text to another app on your phone or to a contact.
- 3** Open the text box where you want to paste the text (even if it's in a different app).
- 4** Tap in the text box, then touch and hold to show the **PASTE** option. Tap **PASTE** to paste the text.

Organize

Clock

Find it: Apps  >  Clock

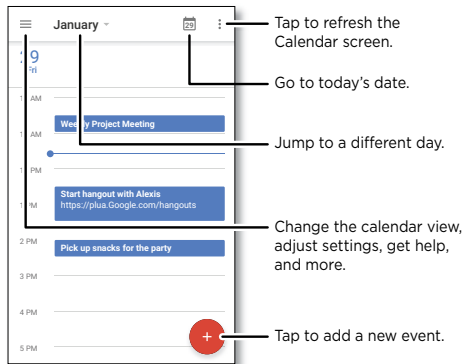
| Options | |
|--|---|
|  Alarm | Tap  . Tap an alarm to edit it, or tap  to add a new alarm. Tip: Pressing the volume button up or down while you're setting an alarm sets the volume level for that alarm. When an alarm sounds, tap  and drag to  to turn it off, or drag to  to snooze for ten minutes. |
|  Clock | To change your alarm volume, snooze delay, or other settings, tap Menu  > Settings . For other time zones, tap  . |
|  Timer | For a timer, tap  . |
|  Stopwatch | For a stopwatch, tap  . |




Tip: To find out what an icon means, touch and hold it. To set your current date, time, time zone, and formats, tap Apps  >  **Settings** > **Date & time**.

Calendar



See all your events, all in one place.

Find it: Apps  >  **Calendar**



- **Change the view:** Tap the month at the top to choose a date to view. Or tap  to choose **Schedule**, **Day**, **3 Day**, **Week**, or **Month**.
- **Go to today's date:** Tap  at the top.
- **Add events:** Tap , enter event details, then tap **SAVE**.



Tip: Alternatively, tap a time on the calendar to enter event details.

- **Show, edit, or delete events:** Tap an event to open it, then tap edit . Tap **DELETE** to remove the event.
- **Show, hide, or add calendars:** Tap  to show or hide calendars from your Google™ account. You can use a computer to add or remove calendars on your Google account at www.google.com/calendar.

Tip: Add a **Calendar** widget to your home screen. Touch and hold an empty spot on the home screen, tap **WIDGETS**, then touch and hold the **Calendar** widget and drag it to your home screen.

Corporate sync

If you use Microsoft® Office Outlook on your work computer, your phone can synchronize email, events, and contacts with your Microsoft Exchange server.



- To add your **Corporate** account, see “**Email**” on page 35.
- To choose what to sync from your **Corporate** account, tap Apps  >  **Settings** > **Accounts** > **Corporate**, tap your account, then check options like **Calendar**, **Contacts**, or **Email**.


Office network

To connect your office network with a Virtual Private Network connection, see “**Virtual Private Networks (VPN)**” on page 58.



Google Drive™

Keep all your photos, videos, documents, and more safely in one place—private unless you choose to share. Available on Google Drive from all your devices.

Find it: Apps  >  **Drive**

- To create a new file or folder, tap .
- To open a file, tap it.
- To edit a document, tap anywhere in the text to begin typing.

Print


To print your photos, documents, and more from your phone, check if your printer's manufacture has an app on Google Play. Then tap Apps  >  **Settings** > **Printing** to get started.


You can also send your photos, docs, and more to any Android device in your cloud or to Google Drive. Just download the Cloud Print app from Google.

Google Apps™

Google Play™

Google Play is a digital content experience from Google where you can find and enjoy your favorite music, movies, TV shows, books, magazines, and Android apps and games.

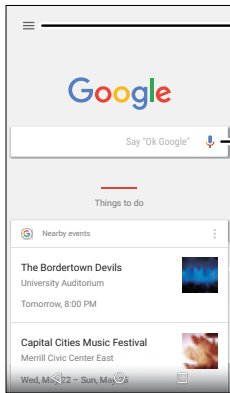
- **Download apps:** Tap Apps (☰) >  **Play Store.**
- Find out more about **Google products:** See www.google.com/about/products.
- Log in or open a **Google account:** Visit www.google.com/accounts.
- **Google help:** See www.google.com/support.
- Access all of your files **in the cloud:** Check out “**Your cloud**” on page 57.

Note: On your phone, you can set up the fingerprint sensor for quick authorization of Google Play purchases. Tap Apps (☰) >  **Play Store** > ☰ > **Settings** > **Fingerprint authentication.**


Google Now™

Google Now brings you just the right information at just the right time, before you even ask. Weather, traffic, transit schedules, even the latest scores come automatically, appearing throughout the day just as you need them.

To get started, touch and hold Home (○), then follow the on-screen prompts.



Set reminders, customize or change settings.

Tap  to perform a task or ask Google a question.

Stuff that's important to you shows up here.


Tip: To remove a card, flick it to the left or right.

Now on Tap™

Note: This feature is currently only available in English.

Now on Tap provides information based on your current app screen.

To access this information, such as links and shortcuts, touch and hold Home (○) while in the app screen.

To turn Now on Tap on/off, tap Apps (☰) >  **Settings** > **Google** > **Search & Now** > **Now cards** > **Now on Tap.**

Play Movies & TV

Find and rent movies and TV shows to watch on your phone, tablet, or computer:

Find it: Apps  >  **Play Movies & TV.**

To shop, rent, or watch on a computer, go to www.google.com/play and choose “Movies & TV”.

YouTube™



Watch videos from YouTube users everywhere—or log in to your account to share your own.

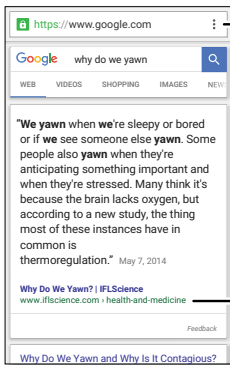
Find it: Apps  >  **YouTube**

Browse

Quick start: Chrome™

Find it: Apps  >  Chrome

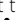







- **Go to a web page:** Tap the address bar at the top of a page and enter an address.
- **Add a bookmark:** Open the address bar (drag down if you don't see it), then tap Menu  > ☆.
- **Open a bookmark:** Open the address bar, then tap Menu  > **Bookmarks**.



See options.

Tap a link to open it. Touch and hold for more options.

Tips & tricks

- **Web page shortcut:** To add a web page shortcut to your home screen, go to the web page and tap Menu  > **Add to homescreen**.
- **Internet search shortcut:** In the home screen, tap the Google™ search box and enter a website address.
Note: If you can't connect, contact your service provider.
- **Mobile sites:** Some websites automatically show you a "mobile" version of their page—if you want to show the standard computer versions of all websites, tap Menu  > **Request desktop site**.
- **Reload:** If a page doesn't load correctly, tap Menu  > .
- **Tabs:** To open a new tab, tap Menu  > **New tab**. If you have more than one browser page open, tap Overview  to move from one to another.
- **Clear history:** In the browser, tap Menu  > **Settings** > **Privacy** > **Clear browsing data**. Then choose history, cache, cookies, and other options.
- **Help:** For more about Google Chrome, tap Menu  > **Help & feedback** or visit www.supportgoogle.com/chrome.

Web connection



To access the web, your phone uses your Wi-Fi network (or your mobile phone network if no Wi-Fi network is connected).





Note: Your service provider may charge to surf the web or download data over your mobile phone network.

To connect to a Wi-Fi network, see “**Wi-Fi Networks**” on page 53.

Downloads

Warning: Apps downloaded from the web can be from unknown sources. To protect your phone and personal data from theft, download apps only on Google Play™.

To download a file, picture, or web page, tap Apps  >  **Chrome** and go to the website:

- **Files:** Tap the download link. To show the file or app, tap Apps  >  **Downloads**.
- **Pictures:** Touch and hold it to choose **Save image**. To see the picture, tap Apps  >  **Photos** > **Download**.




To download apps or phone updates, see “**Download apps**” on page 14 or “**Update your phone**” on page 16.










Browser options

To change your browser security settings, text size, and other options, tap Menu  > **Settings**.

Safe surfing & searching

Keep track of what your browser and searches show:

- **Incognito:** To open a tab that won't appear in your browser or search history, tap Apps  >  **Chrome** > Menu  > **New Incognito tab**.

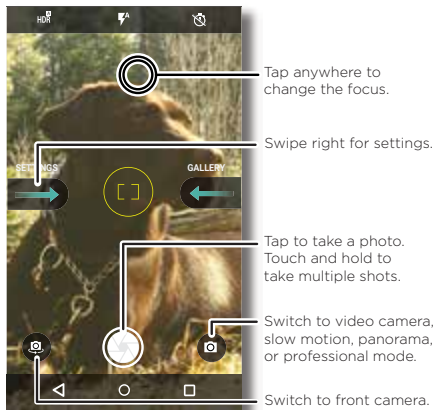
- **Clear history:** To clear your browser history and other saved information, tap Apps  >  **Chrome** > Menu  > **History** > **CLEAR BROWSING DATA**.
- **Auto complete:** When you enter your name in an online form, your browser can automatically enter your address information. If you don't want that, tap Apps  >  **Chrome** > Menu  > **Settings** > **Autofill forms**, then tap the switch to turn it off.
- **Pop-ups:** To stop pop-up windows from opening, tap Apps  >  **Chrome** > Menu  > **Settings** > **Site settings** > **Pop-ups**, then tap the switch to turn it off.

Photos & videos

Quick Start: Photos & videos

With two twists of the wrist and a tap on the screen, take crisp, clear photos with the rear or front camera.

- **Launch it:** Even when your phone is asleep, open your camera with two twists of your wrist.
- **See it:** Swipe left for your photo gallery (🌈 **Photos**).
- **Share it:** View a photo or video from your gallery, then tap Share 📁.



Tips & tricks

- **Quick Capture:** Tap Apps (☰) > 📷 **Camera**, swipe the screen right and tap **Quick capture** to turn it on or off. When Quick Capture is on, twist your wrist twice to open the camera.
- **Take a selfie:** Tap 📷 in the camera screen or twist your wrist twice to switch to the wide angle front camera.
- **Record a video:** Tap 📹 in the camera screen and select **Video** 📹. Tap 🔴 to start recording. Then tap 🛑 to stop recording.
- **Capture a still shot during a video:** Tap 📷 on the screen while recording to save a photo.
- **View, share, or delete:** To open your gallery, swipe the camera screen left. Pick a photo or video. Choose 📁 to share or Menu ⋮ for more options like printing.
- **Change settings:** To open camera options, swipe the camera screen right.
- **Zoom:** Drag two fingers apart to zoom in, drag fingers together to zoom out.
- **Multi-shot:** Touch and hold 📷 to take a burst of photos.
- **Panorama:** Tap 📷 in the camera screen and select **Panorama** 📷. Tap 📷 and use the on-screen guide to slowly pan your phone.
- **Edit:** Tap the photo to select it, then tap ✏️.





- **Print:** Want to print your photos? Check out “**Print**” on page 40.

Take photos


Find it: Apps  >  **Camera**

Tap  to take a photo.

Record videos

Find it: Apps  >  **Camera**, then tap  in the camera screen and select **Video** .



Tap  to start recording. Then tap  to stop recording.



Tip: To share a video, swipe the camera screen left to open your gallery, tap the video, then choose  to share.


Get the perfect shot






Point, tap, and you're done. But when you want something a little different, play with these camera options.

These options are along the top of the camera or video screen:

| Options | |
|--|---|
|  HDR | Turn on HDR (high dynamic range) effect for better pictures in challenging lighting situations, such as outdoors. |
|  Flash | Set On , Off , or Auto Flash . |


| Options | |
|---|--|
|  Timer | Set a timer to 3 seconds or 10 seconds. |
|  Stabilizer | Decrease shakiness when you're taking a video. |

To find these options, tap  in the camera screen:

| Options | |
|--|---|
|  Photo | Take a photo. |
|  Video | Take a video. |
|  Panorama | Take a wide-angle shot. Use the on-screen guide to slowly pan while you are taking the photo. |
|  Slow motion | Take a slow motion movie. |
|  Professional Mode | Control all camera settings manually. |



To find these options, swipe the camera screen right:

| Options | |
|----------------------|--|
| Shutter sound | Turn the shutter sound on or off. |
| Storage | Choose a storage location for your photos and videos (Phone or Memory card). |

| Options | |
|---------------------------------------|--|
| Quick capture | Turn on to twist your wrist twice to turn camera on. Twist twice again to switch to front camera. |
| Location | Turn on to tag photos with a location. |
| Photo size (rear camera) | Set the photo resolution. |
| Tap anywhere to capture | Tap anywhere on the screen to take the photo. When off, tap  to take a photo. |
| Video resolution (rear camera) | Set the video resolution. |
| Quick tutorial | Learn more about your camera. |




Read QR codes & barcodes

Find it: Apps  >  Camera

Your camera can read QR codes and barcodes. Aim your camera at the code. Touch  to open the link or  to copy the link.

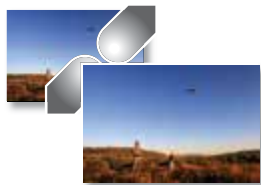
View, share, & use photos & videos

Find it: Apps  >  Photos




- **Play, share, or delete:** Tap a thumbnail to open it, then tap  to share,  to delete, or Menu  for more options.

Tip: To select multiple files, open a folder, touch and hold a photo, then tap others. Or group photos in an album and share the whole album.

- **Zoom:** Open a photo in your gallery, then drag two fingers apart or together on the screen.



Tip: Turn your phone sideways for a landscape view.


- **Wallpaper or contact photo:** Open a picture, then tap Menu  > **Use as** > **Wallpaper** or **Contact photo**.
- **Edit:** Open a picture, then tap .
- **Slideshow:** Tap a picture, then tap Menu  > **Slideshow**. To stop the slideshow, tap the screen.

Tip: To show the slideshow on a television or other device, see “**Connect & transfer**” on page 51.

Capture your screen

Share a screen capture of your favorite playlist, your new high score, or a friend’s contact information.

To capture your phone’s screen, press and hold both the Power and the Volume Down buttons at the same time.

To see the screen capture, tap Apps  >  Photos, tap , then tap **Device folders** > **Screenshot**.

Play Music


Quick start: Music

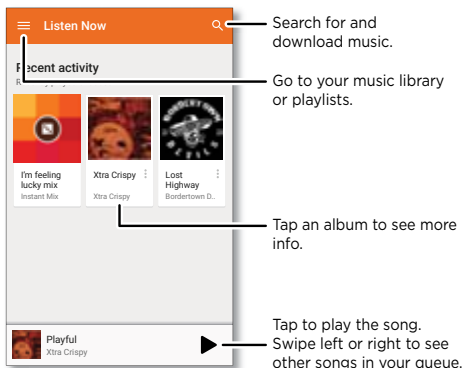
Music everywhere—stream it, buy it, save it, play it. Listen and create playlists anytime.

Find it: Apps  >  **Play Music**




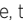
To upload your music library to Google Play Music™, from a computer, visit www.google.com/music.

Tap **Listen Now** to see recommendations and more.

Tip: Share songs directly with your contacts. Tap Menu  next to a song > **Share**. Or use “**Direct Share**” on page 21.



Tips & tricks


- **Volume:** Press the volume buttons.
- **Hide the music player:** To use another app while your music plays, tap Home . To return to the music player, swipe the status bar down and tap the song title.
Tip: You can also select **Next**, **Pause**, or **Previous** by swiping down the notification bar or using the controls on your unlock screen.
- **Home screen:** Control music playback from the home screen by adding the **Google Play Music** widget.
- **Playlists:** Tap Menu  next to a song in your library to add it to a playlist or show other options. To edit, rename, or delete a playlist, touch and hold its name in the music library.
- **Download your music library for offline listening:** To download, tap  next to a song, artist, album, or playlist. To listen offline, tap , then tap **Downloaded only** to avoid using data to stream your music library.
- **During a flight:** Airplane mode lets you to listen to your offline music and disconnects all connections. Swipe down the status bar with two fingers and tap **Airplane mode** to turn it on.
- **File types:** Your phone can play MP3, M4A, AAC, AAC+, MIDI, and WAV files.

Note: Copyright—do you have the right? Always follow the rules. See **“Content Copyright”** in the legal and safety information on your phone.

Locate & navigate

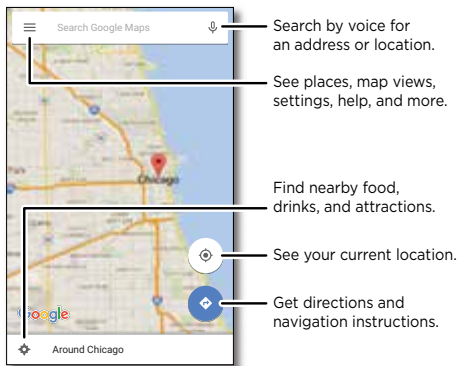
Quick start: Locate & navigate

Find a nearby cafe, get directions or step-by-step GPS voice navigation using the Google Maps™ you know and trust.







Find it: Apps  >  **Maps**

Enter what you want to find in the search bar, then tap it to see more information and options.

Note: Your map screen may look different.



Tips & tricks

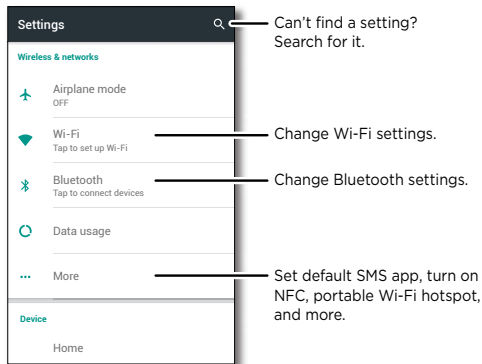
- **Now on Tap™:** In the map screen, touch and hold Home  to see information based on the current map. (See “Now on Tap” on page 41.)
- **Find an address:** In the search field, enter an address or something you’re looking for, like “restaurant.” The map moves to show the address or local suggestions. Tap the address info at the bottom for more details.
- **Get directions:** Tap , then enter a place or address.
- **Save an address:** Tap the address info at the bottom of the screen and then tap **SAVE**. To see your saved places, tap  > **Your places**.
- **Find nearby food, drinks, and attractions:** Tap  > **Explore**.
- **Zoom:** To zoom in or out, drag two fingers together or apart on the screen.
- **Turn and tilt:** Rotate two fingers on the map to turn it, or drag up/down to tilt.
- **Share a location:** Tap a location, then tap the address and tap Menu  > **Share**.
- **Identify address:** Touch and hold a spot on the map to show the nearest address.
- **Get map help:** Tap  > **Help**.

Connect & transfer

Quick start: Connect & transfer

Connect accessories, computers, networks, and more.

Find it: Apps (⋮) > ⚙️ Settings





Tips & tricks

- **Quick settings:** Get to the most used settings quickly. Swipe the status bar down with two fingers. See “**Quick settings**” on page 21.
- **Bluetooth® devices:** To connect a Bluetooth headset, keyboard, or other device, tap **Bluetooth**.
- **Wi-Fi networks:** To connect, tap **Wi-Fi**.
- **Wi-Fi hotspot:** To make your phone a hotspot, check out “**Wi-Fi hotspot**” on page 53.
- **USB-C cable:** You can use your phone’s micro USB-C port to exchange media and other files with a connected computer. To change the type of USB connection, check out “**USB-C cables**” on page 54.
- **Automatic connections:** When Bluetooth or Wi-Fi power is on, your phone automatically reconnects to available devices or networks it has used before.
- **Airplane mode:** Need to shut down wireless connections quickly? Swipe the status bar down with two fingers and tap **Airplane mode** ✈️.
- **Print:** Want to print your photos, docs, or other things? Check out “**Print**” on page 40.

Bluetooth® wireless

Turn Bluetooth power on/off



Find it: Apps  >  **Settings** > **Bluetooth**, then tap the switch to turn it on


Note: Swipe down the status bar with two fingers to quickly turn Bluetooth on or off.


Tip: To extend battery life or stop connections, turn Bluetooth off when you're not using it.

Connect devices

The **first time** you connect a Bluetooth device, follow these steps:

- 1 Make sure the device you are pairing with is in discoverable mode (for details, refer to the guide that came with the device).
- 2 Tap Apps  >  **Settings** > **Bluetooth**.
- 3 Make sure the switch is on.
- 4 Tap a found device to connect it (if necessary, tap **PAIR** or enter a passkey like **0000**).

Tip: Tap  to rename the device.

When the device connects, the Bluetooth connected indicator  appears at the top of the screen.

To automatically **disconnect** or **reconnect** a device (like a wireless headset) anytime, just turn the device off or on.




Note: Using a mobile device or accessory while driving may cause distraction and may be illegal. Always obey the laws and drive safely.

Manage devices

To manually reconnect your phone with a paired device, tap the device name in the list.

To manually disconnect your phone from a paired device, tap the device name in the list, then tap **OK**.





To remove a paired device, tap  next to the device name, then tap **FORGET**.

To change the name your phone shows to other devices, tap Apps  >  **Settings** > **Bluetooth**, turn Bluetooth power on, then tap Menu  > **Rename this device**. Enter a name and tap **RENAME**.

Let devices find your phone


To let a Bluetooth device discover your phone, tap the Bluetooth switch on your phone to turn it on.

Transfer files

- **Photos or videos:** Open the photo or video, then tap  > **Bluetooth**.
- **Contacts:** Tap Apps  >  **Contacts**, tap a person, then tap Menu  > **Share** > **Bluetooth**.

Wi-Fi Networks

Turn Wi-Fi power on/off

Find it: Apps  >  **Settings** > **Wi-Fi**, then tap the switch to turn it on

Note: Swipe down the status bar with two fingers to quickly turn Wi-Fi on or off.

Tip: To extend battery life or stop connections, turn Wi-Fi off when you're not using it.

Connect to networks

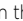
To find networks in your range:


1 Tap Apps  >  **Settings** > **Wi-Fi**.

Tip: To show your phone's MAC address and Wi-Fi settings, tap Menu  > **Advanced**.

2 Make sure the Wi-Fi power switch is on.

3 Tap a found network to connect to it (if necessary, enter **Network SSID**, **Security**, and **Wireless password**, and tap **Connect**).

When your phone connects, the Wi-Fi status indicator  appears in the status bar.

Note: If you see a question mark in the Wi-Fi status indicator , swipe the status bar down, tap the network, and enter the network's password.



Tip: When Wi-Fi power is on, your phone automatically reconnects to available networks it has used before.

Wi-Fi hotspot

Note: This phone supports apps and services that may use a lot of data, so make sure your data plan meets your needs. Contact your service provider for details.

You can make your phone a Wi-Fi hotspot to provide portable, convenient internet access to other Wi-Fi enabled devices.

Note: Keep it secure. To protect your phone and hotspot from unauthorized access, it is strongly recommended that you set up hotspot security (WPA2 is the most secure), including password.

Find it: Apps  >  **Settings** > **More** > **Tethering & Mobile Hotspot**, then tap the **Mobile Hotspot** switch to turn it on

1 Your phone turns off **Wi-Fi** power and uses the mobile network for internet access. Tap **Mobile Hotspot settings** > **Setup Mobile Hotspot** to set up security:

- **Network name:** Enter a unique name for your hotspot.
- **Security:** Select the type of security you want: **None** or **WPA2 PSK**. For **WPA2**, enter a unique password that others will need to access your Wi-Fi hotspot.
Note: WPA2 is recommended by IEEE.
- **Password:** Create a password with at least eight characters.

- **Select AP Band:** If you notice interference after your hotspot has been active for a while, try different bands.

- **Client (DHCP) start address**

2 Tap **SAVE** when the settings are complete.

When your Wi-Fi hotspot is active, other Wi-Fi enabled devices can connect by entering your hotspot's **Network name**, selecting a **Security** type, and entering the correct wireless **Password**.


Wi-Fi modes

For those who like to get a bit more technical, your phone supports the following Wi-Fi modes: 802.11 a, b, g, n, ac.

USB-C cables

Note: Copyright—do you have the right? Always follow the rules. See “**Content Copyright**” in the legal and safety information on your phone.

To load music, pictures, videos, documents, or other files to and from your computer, connect your phone to your computer with a USB-C cable.

To transfer files, you need to specify the type of USB computer connection you want to use. Swipe the status bar down and tap  **USB for charging**, then select the connection type:

- **Charging**
- **File transfers (MTP)**

- **Photo transfer (PTP)**

- **MIDI**

Tip: Make sure to connect the phone to a high power USB port. Typically, these are located directly on your computer.

Note: The first time you use a USB connection, your computer may indicate that drivers are being installed. Follow any prompts you see to complete the installation. This may take a few minutes.

- For Microsoft® Windows®: On your computer, choose Start, then select Windows Explorer from your list of programs. In Windows Explorer, your phone will appear as a connected drive (mass storage device) where you can drag and drop files, or it will appear as an MTP or PTP device that lets you use Windows Media Player to transfer files. For more instructions or driver files, visit www.motorola.com/support.
- For Apple™ Macintosh™: Use Android File Transfer, available at www.android.com/filetransfer.

Share your data connection

Your computer can access the internet through your phone's mobile network—you just need a USB-C cable.

Tip: To share a Wi-Fi connection, see “**Wi-Fi hotspot**” on page 53.

- 1 Connect your phone to your computer using a USB-C cable.

Note: If your computer is running something older than Microsoft® Windows® 7 or Apple™ Macintosh™ OSX, it might require special configuration.

- 2 On your phone, tap Apps (⋮) > ⚙️ **Settings** > **Wi-Fi**, then make sure the **Wi-Fi** switch is turned off.
- 3 In **Settings**, tap **More** > **Tethering & Mobile Hotspot**, then tap the **USB tethering** switch to turn it on and start the connection.

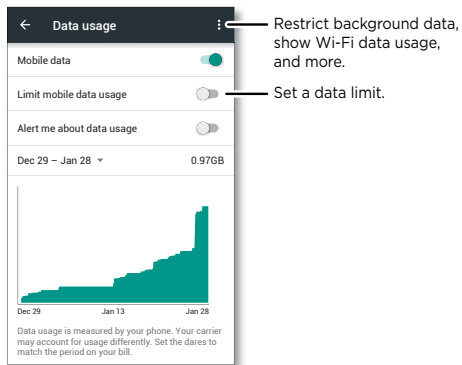
To stop the connection, tap the **USB tethering** switch to turn it off, then disconnect your phone from your computer.

Data use

You can track the amount of data your phone uploads and downloads.

Find it: Apps (⋮) > ⚙️ **Settings** > **Data usage**

Your phone shows a data usage graph. Below the graph, apps are listed from highest to least data usage. Apps that use a lot of data might also use a lot of battery power.



Some apps transfer data in the background when you're not viewing them—to stop an app from doing this, tap it and then check **Restrict app background data**.

To turn off background data use for all apps, tap Menu (⋮) > **Restrict background data**.

Note: Usage information is provided to help you manage your phone. This may not match the amounts charged by your service provider, as they're not measured in the same way.

NFC

Near Field Communication technology lets you instantly share content (like web links, contacts, and photos), information, and more, by touching the back of your phone to another NFC-enabled device.

Find it: Apps  >  **Settings**
> **More** > **NFC**



Share with Android Beam™

Use Android Beam to share content on your phone with another NFC-enabled phone or tablet.

Find it: Apps  >  **Settings** > **More** > **Android Beam**

Note: The other device must support NFC, too.

- 1 Open the screen that contains the map page or browser page you want to share.
- 2 Touch the back of your phone to the back of the other device.
When the devices connect, you'll see **Touch to Beam** on your phone.
- 3 Tap your screen to share your content.

Receive with NFC

Receive web links, e-coupons, brochures, maps, and more from an NFC tag. Look for the NFC logo on posters, signs, store displays, and other areas. Touch the back of your phone to the logo to receive its tag information.

Bluetooth & Wi-Fi one-touch setup

Touch the back of your phone to an NFC-enabled Bluetooth device or Wi-Fi access point to automatically pair or connect with the device.

Mobile payment

You can use any secure payment app to pay for your purchase (where available).

Look for the NFC logo to confirm that you can make a mobile payment. Touch the back of your phone to the payment device to pay for your purchase.

Security

Mobile payments, wireless connections, and content sharing all demand security:

- **Range:** NFC only works over a short range (about 4 cm/1.5 inches), so it's unlikely you'll connect by mistake—if you did, you would still have to accept the connection to send or receive information.
- **Encryption:** Your phone uses the latest security, encryption, and authentication features to protect your

personal information for mobile payments and content sharing.

Wireless display

Mirror your phone's screen on an HDTV without any cords—with minimal setup.

Find it: Tap Apps  >  **Settings** > **Display** > **Cast**

Your phone scans for compatible wireless display devices. Select a device to show your phone's screen on the big screen.



Wireless display requires either a Miracast™-enabled HDTV or a wireless display adapter to work. If your TV or monitor doesn't support wireless display, you can purchase a Miracast or Chromecast™ accessory device to enable it.

Tip: To quickly find a wireless display device, swipe the status bar down with two fingers and tap **Cast**.

Your cloud

One account with access to everything, everywhere—phone, tablet, computer.

Sync your Google™ account

When you log in to the same Google account, all devices can get to all the same apps, movies, books, and music from Google Play™—plus you share the same Gmail™, Google Calendar™, and Google Mobile™. To add Google accounts to your phone, tap Apps  >  **Settings** > **Accounts** > **Add account** > **Google**.

Phone & tablet

Your Android™ phone and tablet can work together to help you get the most out of both:

- **Transfer media and files:** Copy files to your phone and transfer them to other devices—see “**Transfer files**” on page 52.
- **Phone hotspot:** If you have a Wi-Fi tablet, turn your phone into a Wi-Fi hotspot to let your tablet access the Internet anywhere—see “**Wi-Fi hotspot**” on page 53.




- **Bluetooth® accessories:** If you have a Bluetooth keyboard or other accessories to use with your tablet, remember you can use them with your phone too. To connect them, see “**Bluetooth® wireless**” on page 52.

Memory card

You can choose to use your SD card as portable or internal storage:

- **Portable storage:** Store your pictures, videos, audio and other media files. You can remove the SD card at any time and transfer it to another device.
- **Internal storage:** In addition to your media files, you can store downloaded apps and games. The SD card acts as an extension of the internal storage of your phone.

After you have inserted an SD card into your phone, you will be prompted to select either portable or internal storage.

To manually set your SD card to internal storage tap Apps  >  **Settings** > **Storage & USB**, then select your SD card and tap Menu  > **Settings** > **Format as internal**.




Caution: If your SD card is set to internal storage, it is formatted and encrypted to protect your information. If you want to use it as portable storage, or in another device, you'll need to format it. Before doing so, please remember that formatting erases all the data stored on your SD card.

Tip: Use a Class 10 SD card.

Note: Your phone supports SD card up to 128 GB.




Mount or unmount memory card

To mount an SD card, just put it in your phone (see “**Put in the cards & power on**” on page 5).

To unmount your SD card (so you can take it out of your phone), tap Apps  >  **Settings** > **Storage & USB**, then tap  next to the SD card name.



Caution: Do not remove an SD card while your phone is using it or writing files to it.

Erase memory card content and format card

To delete all the information (music, photos, and files) from your SD card and re-format the card, tap Apps  >  **Settings** > **Storage & USB**, tap the SD card, then tap Menu  > **Settings** > **Format**.



Virtual Private Networks (VPN)

A VPN lets you access files on a secured network (like an office network with a firewall). Contact the network administrator to ask for VPN settings, and any additional apps or other requirements.

To enter VPN settings, tap Apps  >  **Settings** > **More** > **VPN**. Tap **+** to add a new VPN. Choose the type of VPN and enter settings from the network administrator. The network is stored in the **VPN** list so you can select it whenever you need to connect.

Mobile network


You should not need to change any network settings. Contact your service provider for help.

To see network settings options, tap Apps  >  **Settings** > **More** > **Cellular networks**.

To switch networks, tap Apps  >  **Settings** > **More** > **Cellular networks** > **Network operators** and select a network.

Note: Your phone supports most networks. Contact your service provider for help.

Airplane mode

Use airplane mode to turn off all your wireless connections—useful when flying. Swipe the status bar down with two fingers and tap **Airplane mode** .

Note: When you select airplane mode, all wireless services are disabled. You can then turn Wi-Fi and/or Bluetooth® power back on, if permitted by your airline. Other wireless voice and data services (such as calls and text messages) remain off in airplane mode. Emergency calls to your region's emergency number can still be made.

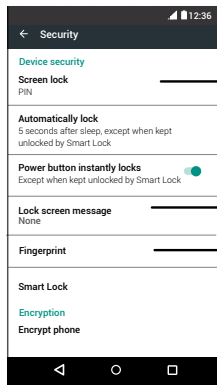
Protect

Quick start: Protect your phone

Make sure your information is protected in case your phone is lost or stolen.

Find it: Apps  >  **Settings** > **Security**

The easiest way to protect your phone is to use **Screen lock**. You can choose to swipe to unlock (less secure), or enter a pattern, PIN, or password to unlock your phone.





For a screen lock, you can use a pattern, password, or other option.


Add info to show on your lock screen.



Set up the fingerprint sensor.

Screen lock

To keep your phone secure, you can make the touchscreen lock when it goes to sleep.

Find it: Apps  >  **Settings** > **Security** > **Screen lock**, then select the lock type:

- **None:** Turn off the screen lock.
- **Swipe:** Touch  and drag up to unlock.
- **Pattern:** Draw a pattern to unlock.
- **PIN:** Enter four to sixteen digits to unlock.
- **Password:** enter four to sixteen letters, digits, or symbols to unlock.

Note: You can use your fingerprint to unlock your phone. To set up the fingerprint sensor, tap Apps  >  **Settings** > **Security** > **Fingerprint**.

To change when your touchscreen goes to sleep, tap Apps  >  **Settings** > **Display** > **Sleep**.

Note: You can make emergency calls on a locked phone (see “**Emergency calls**” on page 29). A locked phone still rings, and you do not need to enter a PIN or password to answer a call.

Can't unlock?

Pattern, PIN, or password: If you forget your pattern, PIN, or password, you can enter your Google™ account email and password to unlock the phone.

If you don't have a Google account on your phone, contact your service provider to have your device factory reset.



Warning: A factory reset will delete all data on your phone.



Screen pinning



Pin an app screen to keep it in view until you unpin it.

Want to let someone else use an app on your phone? Pin the app screen to hide your other apps and data.

Need to keep an important screen handy, like a boarding pass or shopping coupon? Pin the screen for easy access.

To **set up** screen pinning, tap Apps  >  **Settings** > **Security** > **Screen pinning**, then tap the switch to turn it on.

To **pin** a screen, open the app you want to pin, touch and hold Overview , and scroll up. Tap .

To **unpin** the screen, touch and hold both Back  and Overview  until you see the **Screen unpinning** message.



Tip: To **secure** your phone when you activate screen pinning, tap **Lock device when unpinning**.

Encrypt your phone



Caution: If you forget your encryption code, you cannot recover the data stored on your phone or memory card.

Encrypting your files can take an hour or more. Leave your phone plugged in, and be careful not to interrupt the process.

Encryption protects the accounts, settings, apps, and files on your phone, so that people cannot access them if your phone is stolen.



You shouldn't need to use this feature, but to encrypt your phone and require a PIN or password whenever you turn on your phone, tap Apps  >  **Settings** > **Security** > **Encrypt phone**.

Backup & restore

Find it: Apps  >  **Settings** > **Backup & reset**, then tap the **Back up my data** switch to turn it on

Your Google account data is backed up online. If you reset or replace your phone, just log in to your Google account to restore the contacts, events, and other details you synced with the account.

To restore backed up data when reinstalling an app, tap Apps  >  **Settings** > **Backup & reset** > **Automatic restore**.

To choose what syncs with the account, tap Apps  >  **Settings** > **Accounts** > **Google**, tap your Google account, and check things to sync.

Note: Text messages, call logs, and items stored on your phone will not be restored. To restore your Google Play™ apps, see “**Take care of your apps**” on page 15.

Reset

To reset your phone to factory settings and erase all the data on your phone, tap Apps (⋮) >  **Settings** > **Backup & reset** > **Factory data reset**.

Warning: All downloaded apps and user data on your phone will be deleted. Data on the cloud will not be deleted.









Stolen phone?

Your phone has Android Device Manager. You can remote lock or reset your device to protect your device from thieves. For details, see www.google.com/android/devicemanager.




Want more?

Get help & more

Get answers, updates, and info:

- **Help is here:** Tap Apps  >  **Help** to get walk-through tutorials, how-to's, FAQs, videos and more, right on your phone.
- **Everything Moto Z FORCE Droid:** Get PC software, user's guides, and more at www.motorola.com/mymotozforcedroid.
- **Accessories:** Get accessories for your phone at www.motorola.com/mobility.
- **Get Apps:** Tap Apps  >  **Play Store** to buy and download apps.
- **Warranty:** To obtain a copy of your warranty, call 1-800-734-5870.
- **News:** Here's how to find us:
 -  YouTube™ www.youtube.com/motorola
 -  Facebook® www.facebook.com/motorola
 -  Twitter www.twitter.com/motorola
 -  Google+™ www.google.com/+Motorola/posts

Tips & tricks

- **Interactive:** To get started quickly, tap Apps  >  **Help** for interactive tutorials.
- **Google™ help:** In almost every Google app, you can tap Menu  > **Help**. You can also view the Google help centers online at www.google.com/support.

Crash recovery

In the unlikely event that your phone stops responding to touches and button presses, try a reboot—press and hold the Power button until the screen goes dark and your phone restarts.

Service & repairs

If you have questions or need assistance, we're here to help.

Go to www.motorola.com/support, where you can select from a number of customer care options. You can also contact the Motorola Customer Support Center at: 1-800-734-5870 (United States), 1-888-390-6456 (TTY/TDD United States for hearing impaired), or 1-800-461-4575 (Canada).

Copyright & Trademarks

Motorola Mobility LLC
222 W. Merchandise Mart Plaza
16th Floor
Chicago, IL 60654
www.motorola.com

Certain features, services and applications are network dependent and may not be available in all areas; additional terms, conditions and/or charges may apply. Contact your service provider for details.

All features, functionality, and other product specifications, as well as the information contained in this guide, are based upon the latest available information and believed to be accurate at the time of printing. Motorola reserves the right to change or modify any information or specifications without notice or obligation.

Note: The images in this guide are examples only.

MOTOROLA and the Stylized M Logo are trademarks or registered trademarks of Motorola Trademark Holdings, LLC. Android, Google and other trademarks are owned by Google Inc. The Android robot is reproduced or modified from work created and shared by Google and used according to terms described in the Creative Commons 3.0 Attribution License. The microSD logo is a trademark of SD-3C, LLC. DROID is a trademark of Lucasfilm Ltd. and its related companies. Used under license. All other product or service names are the property of their respective owners.

© 2016 Motorola Mobility LLC. All rights reserved.

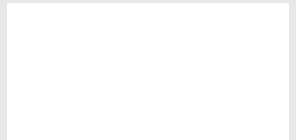
Caution: Motorola does not take responsibility for changes/modification to the transceiver.

Product ID: Moto Z FORCE Droid (Model XT1650-02)

Manual Number: 68018224001-A



motorola.com



Free Manuals Download Website

<http://myh66.com>

<http://usermanuals.us>

<http://www.somanuals.com>

<http://www.4manuals.cc>

<http://www.manual-lib.com>

<http://www.404manual.com>

<http://www.luxmanual.com>

<http://aubethermostatmanual.com>

Golf course search by state

<http://golfingnear.com>

Email search by domain

<http://emailbydomain.com>

Auto manuals search

<http://auto.somanuals.com>

TV manuals search

<http://tv.somanuals.com>