



# Plate Compactor



For replacement parts visit  
**WENPRODUCTS.COM**

Model # 56035  
[bit.ly/WENvideo](http://bit.ly/WENvideo)


## IMPORTANT:

Your new tool has been engineered and manufactured to WEN's highest standards for dependability, ease of operation, and operator safety. When properly cared for, this product will supply you years of rugged, trouble-free performance. Pay close attention to the rules for safe operation, warnings, and cautions. If you use your tool properly and for intended purpose, you will enjoy years of safe, reliable service.



## NEED HELP? CONTACT US!

Have product questions? Need technical support?  
Please feel free to contact us at:

 **800-232-1195** (M-F 8AM-5PM CST)

 [techsupport@wenproducts.com](mailto:techsupport@wenproducts.com)

 **WENPRODUCTS.COM**

## TABLE OF CONTENTS

---

|                                    |    |
|------------------------------------|----|
| Identification .....               | 2  |
| Service Record .....               | 2  |
| Specifications .....               | 3  |
| Introduction .....                 | 4  |
| Safety Information .....           | 4  |
| Know Your Plate Compactor .....    | 7  |
| Assembly .....                     | 8  |
| Preparation .....                  | 8  |
| Operation .....                    | 9  |
| Maintenance .....                  | 12 |
| Troubleshooting .....              | 17 |
| Exploded View and Parts List ..... | 18 |
| Warranty Statement .....           | 26 |

## IDENTIFICATION

---

If assistance for information or service is required, please contact the Customer Service Help Line by calling 800-232-1195; customer will be asked to provide the following information when calling.

Record information in the spaces provided below and make sure to save your original purchase receipt.

MODEL NUMBER: 56035

DATE OF PURCHASE: \_\_\_\_\_

PURCHASED FROM: \_\_\_\_\_

ENGINE SERIAL NUMBER: \_\_\_\_\_

## SERVICE RECORD

---

Record Service Dates:

|                   | Date | Date | Date | Date | Date | Date |
|-------------------|------|------|------|------|------|------|
| Change Oil        |      |      |      |      |      |      |
| Change Spark Plug |      |      |      |      |      |      |
| Clean Fuel Tank   |      |      |      |      |      |      |
| Clean Air Filter  |      |      |      |      |      |      |

**NOTE: WE SUGGEST RUNNING YOUR PLATE COMPACTOR AT LEAST ONCE A MONTH IN ORDER TO MAXIMIZE THE LIFESPAN OF THE PLATE COMPACTOR**

## SPECIFICATIONS

---

|                       |                          |
|-----------------------|--------------------------|
| Engine                | 212cc, 4 Stroke          |
| Compaction Force      | 4496 lbs.                |
| Plate Size            | 24 x 18 in.              |
| Forward Travel        | Up to 82 Feet per Minute |
| Vibrations per Minute | 5400                     |
| Dimensions            | 25 x 18.5 x 27.5 in.     |
| Weight                | 207 lbs.                 |

|                     |   |
|---------------------|---|
| Engine Type         | 4 stroke, OHV, single cylinder with forced air cooling system |
| Spark Plug Gap      | 0.6 - 0.8 mm (0.023 - 0.031 in)                               |
| Ignition System     | Non-contact transistor  |
| Displacement        | 212cc   |
| Fuel Tank Capacity  | 1 Gallon  |
| Engine Oil Capacity | 20 fl. oz (0.6 L)   |
| Spark Plug          | F6TC  |

NOTE: To prevent pavers from breaking or marring, we recommend using the WEN 56035-047 Construction Zone Plate Compactor Pad.

# INTRODUCTION

---

Thank you for purchasing a WEN Plate Compactor. This manual provides information regarding the safe operation and maintenance of this product. Every effort has been made to ensure the accuracy of the information in this manual. WEN reserves the right to change this product, manual and specifications at any time without notice.

Please keep this manual available to all users during the entire life of the plate compactor.



This manual contains special messages to bring attention to potential safety concerns as well as helpful operating and servicing information. Please read all the information carefully to avoid personal injury and machine damage.

## QUESTIONS? PROBLEMS?

In order to answer questions and solve problems in the most efficient and speedy manner, contact Customer Service at (800) 232-1195, M-F 8-5 CST or email [techsupport@wenproducts.com](mailto:techsupport@wenproducts.com).

## NOTICE REGARDING EMISSIONS

Engines certified to comply with U.S. EPA emission regulations for SORE (Small Off Road Equipment) can be operated on regular unleaded gasoline and may include the following emission control systems: (EM) Engine Modifications and (TWC) Three-Way Catalyst (if so equipped).

# SAFETY INFORMATION

---

Before operating this plate compactor read and observe all warnings, cautions, and instructions both on the labels and in this owner's manual.

**NOTE:** The following safety information is not meant to cover all possible conditions and situations that may occur.

This safety alert symbol is used to identify safety information about hazards that can result in personal injury.



A signal word (**DANGER**, **WARNING**, or **CAUTION**) is used with the alert symbol to indicate the likelihood and the potential severity of injury. In addition, a hazard symbol may be used to represent the type of hazard.

**DANGER** indicates a hazard, which, if not avoided, will result in death or serious injury.

**WARNING** indicates a hazard, which, if not avoided, could result in death or serious injury.

**CAUTION** indicates a hazard, which, if not avoided, might result in minor or moderate injury.

**CAUTION** when used without the alert symbol, indicates a situation that could result in damage to the engine or plate compactor.

## SAFETY INFORMATION

---

For any questions regarding the hazard and safety notices listed in this manual or on the product, please call (800) 232-1195 M-F 8-5 CST before using the plate compactor.



### DANGER: CARBON MONOXIDE

Using a plate compactor indoors **CAN KILL YOU IN MINUTES**. Engine exhaust contains carbon monoxide (CO). This is a poison gas you cannot see or smell. If you can smell the engine exhaust, you are breathing CO. But even if you cannot smell the exhaust, you could be breathing CO.

**NEVER** use a plate compactor inside homes, garages, crawl spaces, or other partially/fully enclosed areas. Deadly levels of carbon monoxide can build up in these areas. Using a fan or opening windows and doors does **NOT** supply enough fresh air. **ONLY** use outside and far away from windows, doors, and vents. These openings can pull in engine exhaust.

Even if you use an engine correctly, CO may leak into the home. **ALWAYS** use a battery-powered or battery-backup CO alarm in the home. If you start to feel sick, dizzy, or weak after the engine has been running, move to fresh air **RIGHT AWAY**. See a doctor. You may have carbon monoxide poisoning.



**WARNING:** The exhaust from this product contains chemicals known to the State of California to cause cancer, birth defects, or other reproductive harm.



**WARNING:** This engine may emit highly flammable and explosive gasoline vapors, which can cause severe burns or even death if ignited. A nearby open flame can lead to explosion even if it isn't directly in contact with gasoline.

### SAFETY RULES:

- 1) Do not operate near open flame.
- 2) Do not smoke near the plate compactor.
- 3) Always turn the plate compactor off before refueling. Allow it to cool for at least 2 minutes before removing fuel cap. Loosen cap slowly to relieve pressure in tank.
- 4) Do not overfill fuel tank. Gasoline may expand during operation. Do not fill to the top of the tank. Allow for expansion.
- 5) Always check for spilled fuel before operating.
- 6) Empty fuel tank before storing or transporting the plate compactor.
- 7) Do not use in rainy conditions.
- 8) Do not allow children or non-qualified persons to operate the plate compactor.
- 9) Do not touch hot surfaces. Pay attention to warning labels on the machine identifying hot parts.
- 10) Allow unit to cool down after use before touching engine or areas of the plate compactor that become hot during use.

## SAFETY INFORMATION

- 11) Only use the plate compactor for its intended purposes.
- 12) Operate only on dry, level surfaces.
- 13) Turn the engine switch to “OFF” position when the engine is not running.
- 14) Do not operate or service this machine before reading the entire manual.
- 15) Never operate this equipment without proper protective clothing, shatterproof ANSI-approved glasses, steel-toed boots, and other protective job site devices.
- 16) Never operate this equipment while under the influence of drugs or alcohol or while feeling fatigued or ill.
- 17) Always check the machine for loosened threads or bolts before starting.
- 18) Always wear proper respiratory, hearing and eye protection during operation.
- 19) Manufacturer does not assume responsibility for any accident due to equipment modifications and will also void the warranty.
- 20) Never use accessories or attachments that are not recommended by WEN for this model of plate compactor.
- 21) **DO NOT** add fuel to the plate compactor if it is placed on top of a plastic surface such as a pickup truck bed with a plastic liner. This creates the possibility of ignition or explosion due to static electricity buildup.
- 22) Always refuel in well-ventilated areas. Never operate near open flames, sparks or any other item that could cause the fumes of the gasoline to ignite.
- 23) Before performing compacting work near buildings or above pipelines, check the effect of the vibrations on the buildings and pipelines. If necessary, immediately stop the compacting work.

**CAUTION:** Misuse of this unit can damage it or shorten its life.



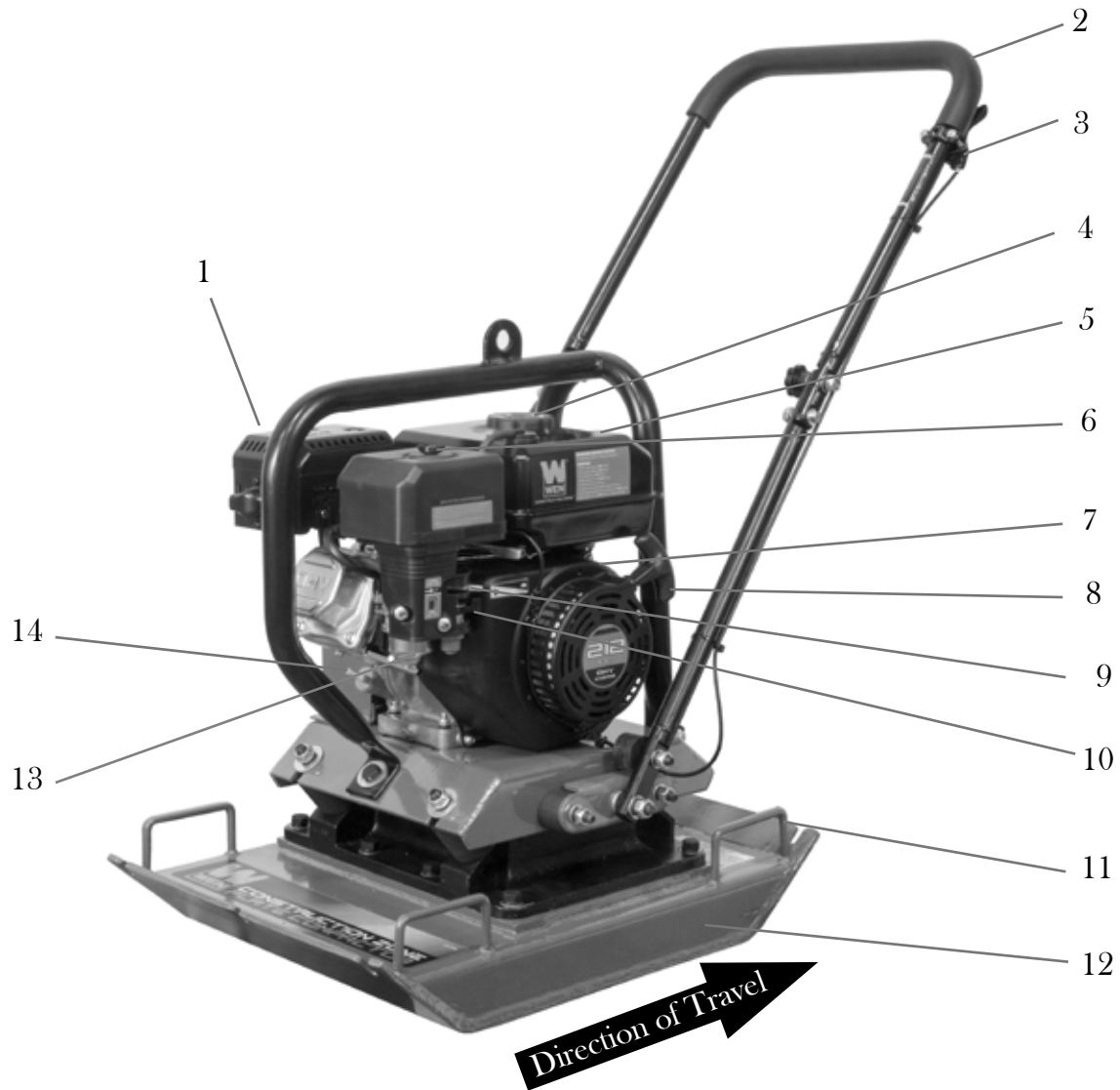
**WARNING:** This unit produces heat when running. Temperatures near exhaust can exceed 150° F (65° C).

**SAVE THESE INSTRUCTIONS** - This manual contains important instructions for the WEN Plate Compactor that should be followed during installation and maintenance. If items are damaged, have them repaired or replaced as necessary. Do not operate if you notice signs of damage such as broken or cracked insulation.

**NOTE:** We suggest running your engine at least once a month in order to maximize the lifespan of the plate compactor.

## KNOW YOUR PLATE COMPACTOR

Use the illustration below to become familiar with the locations and functions of the various components and controls of this plate compactor.



1. Muffler

2. Handle

3. Throttle

4. Gas Tank Cap

5. Gas Tank

6. Air Cleaner

7. Engine Switch

8. Recoil Starter Handle

9. Choke

10. Fuel Valve

11. Lifting Handle

12. Base

13. Carburetor

14. Oil Cap

# ASSEMBLY

In order to best protect the plate compactor while in the package, this product comes with some components disassembled. Please complete the following assembly step before proceeding to use the plate compactor.

If after reading this section, you are unsure about how to perform any of the steps, please call 800-232-1195 (M-F 8-5 CST)



**WARNING:** This plate compactor is heavy. Some procedures may require lifting equipment or two people.

## HANDLE ASSEMBLY:

The Plate Compactor is shipped with the lower handle already assembled and attached to the plate.

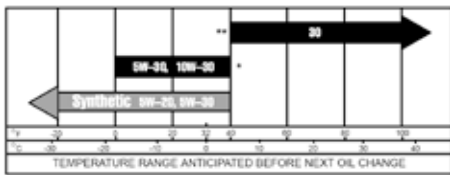
To complete the handle assembly, loosen the knobs in the middle of the handle and swing the upper handle into place.

Next, insert the bolt, washer and nut into the hole directly above the plastic knob. Tighten the nut and the plastic knob.

Repeat the process on the other side of the handle.

## PREPARATION

### ENGINE OIL RECOMMENDATIONS



**CAUTION:** Air cooled engines run hotter than automotive engines. The use of non-synthetic multi-viscosity oils (5W-30, 10W-30, etc.) in temperatures above 40° F will result in higher than normal oil consumption. When using a multi-viscosity oil, check the oil level more frequently than you would otherwise.

Fig. 1

### STEP 1 - FILL OIL:

The plate compactor is shipped without oil. User must add the proper amount of oil before operating the plate compactor for the first time. The oil capacity of the engine crankcase is 20 fl. oz (0.6 L).

Select good quality detergent oil bearing the American Petroleum Institute (API) service classifications SJ, SL, or SM (synthetic oils may be used). Use the ASE viscosity grade of oil from the following chart (Fig. 1) that matches the starting temperature anticipated before the next oil changes.

### FILLING CRANKCASE WITH OIL:

1. Make sure the plate compactor is on a level surface. Tilting the plate compactor to assist in filling will cause oil to flow into engine areas and will cause damage. **Keep plate compactor level!**
2. Remove the oil filler/dipstick cap (Fig. 2 - 1) from the engine.
3. Using a funnel, add the appropriate type and amount of oil into the crankcase. The crankcase is full when the oil level has reached the second thread from the lip of the opening (Fig. 3, next page).
4. Check for oil leaks. Reinstall oil filler cap before starting engine.

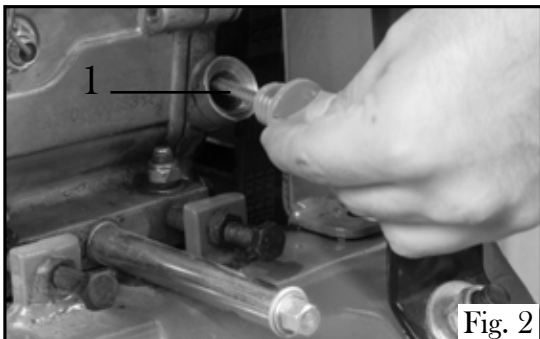


Fig. 2



**WARNING:** This plate compactor may emit highly flammable and explosive gasoline vapors, which can cause severe burns or even death if ignited. A nearby open flame can lead to explosion even if not directly in contact with gasoline.



## PREPARATION

### STEP 2 - ADD GASOLINE:

Use fresh (within 30 days from purchase), lead-free gasoline with a minimum of 87 octane rating. Do not mix oil with gasoline.

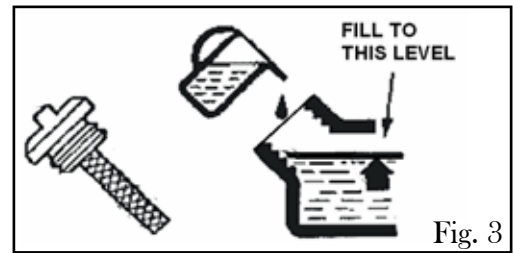
1. Make sure the plate compactor is on a level surface.
2. Unscrew fuel cap and set aside.

NOTE: The fuel cap may be tight and hard to unscrew.

3. Slowly add unleaded gasoline to the fuel tank. Be careful not to overfill. The capacity of the fuel tank is 1 gallon.

NOTE: Do not fill the fuel tank to the very top. Gasoline will expand and spill over during use even with the fuel cap in place.

4. Reinstall the fuel cap and wipe clean any spilled gasoline with a dry cloth.



- Never use an oil/gasoline mixture.
- Never use gasoline over 30 days old.
- Avoid getting dirt or water into the fuel tank.
- Gasoline can age in the tank and make starting difficult. Never store plate compactor for extended periods of time with fuel in the tank.

### STEP 3 - CHECK FOR LOOSE PARTS

Before using the plate compactor, always check for broken or loose parts. Any screw, bolt or nut runs the risk of loosening due to the vibratory nature of this machine. Always make sure to properly tighten these types of parts prior to operation to best prevent injury. Remove dirt and dust, particularly around the area of the recoil starter and the foot of the machine.

## OPERATION

Before starting the plate compactor, make sure you have read and performed the steps in the “Preparation” section of this manual. If you are unsure about how to perform any of the steps or questions regarding the hazard and safety notices listed in this manual please call (800) 232-1195 M-F 8-5 CST for customer service.



### DANGER: CARBON MONOXIDE

Using a plate compactor indoors **CAN KILL YOU IN MINUTES**. Engine exhaust contains carbon monoxide (CO). This is a poison gas you cannot see or smell. If you can smell the engine exhaust, you are breathing CO. But even if you cannot smell the exhaust, you could be breathing CO.

**NEVER** use a plate compactor inside homes, garages, crawl spaces, or other partially/fully enclosed areas. Deadly levels of carbon monoxide can build up in these areas. Using a fan or opening windows and doors does **NOT** supply enough fresh air. **ONLY** use outside and far away from windows, doors, and vents. These openings can pull in engine exhaust.

Even if you use an engine correctly, CO may leak into the home. **ALWAYS** use a battery-powered or battery-backup CO alarm in the home. If you start to feel sick, dizzy, or weak after the engine has been running, move to fresh air **RIGHT AWAY**. See a doctor. You may have carbon monoxide poisoning.



**WARNING:** The exhaust from this product contains chemicals known to the State of California to cause cancer, birth defects, or other reproductive harm.



**WARNING:** This engine may emit highly flammable and explosive gasoline vapors, which can cause severe burns or even death if ignited. A nearby open flame can lead to explosion even if it isn't directly in contact with gasoline.

# OPERATION

---

## **STARTING THE PLATE COMPACTOR:**

1. Check the oil and fuel levels.
2. Turn the fuel valve to the “ON” position.
3. Move the choke lever to the “START” position.
4. Set the engine switch to the “ON” position.
5. Move throttle lever to “MIN” position.
6. Pull on the recoil starter handle slowly until a slight resistance is felt. Then pull quickly to start the engine. Return cord gently into the machine. Never allow the cord to snap back.
7. If engine fails to start, repeat steps 1 through 6.

**NOTE:** After repeated failed attempts to start the engine, please consult the troubleshooting guide before attempting again. If problems persist, please call 800-232-1195 (M-F 8-5 CST).

8. Once the engine has started, slowly return the choke lever all the way to the “OPEN” position.
9. Allow the plate compactor to run for several minutes before increasing the speed using the throttle.
10. Move throttle lever to “MAX” position to engage the plate.

This plate compactor is designed for compacting loose, granular soils, gravel, and paving stones. It is intended to be used in confined areas and areas next to structures such as walls, curbs, and foundations.

This plate compactor is not recommended for compacting cohesive soils with heavy clay content.

Run the engine at full throttle and allow the plate to pull itself along at its normal speed. When operating on an incline it may be necessary to assist the plate by pushing it forward slightly. When operating downhill, hold the plate back slightly if it begins to pick up speed. Depending on the material being compacted, three or four passes are recommended to achieve the best compaction.

While a certain amount of moisture in the soil is necessary, excessive moisture may cause soil particles to stick together and prevent good compaction. If soil is extremely wet, allow it to dry somewhat before compacting.

If the soil is so dry that it creates dust clouds during operation, some moisture should be added to the ground material to improve compaction. This will also reduce service to the air filter. For compacting asphalt, use a water tank to wet the asphalt and the underside of plate. This will prevent asphalt material from sticking and reduce the frequency of needing to service the air filter. Two passes are usually sufficient enough to ensure good compaction. When using the plate on paving stones, attach a pad to the bottom of the plate to prevent chipping or grinding surface of stones. A special polyurethane pad (Item # 56035-047) designed for this purpose is available as an optional accessory and can be purchased at [www.wenproducts.com](http://www.wenproducts.com) or by calling 800-232-1195 (M-F 8-5 CST).



**WARNING: DO NOT** operate the plate on concrete or on extremely hard, dry, compacted surfaces. The plate will jump rather than vibrate and could damage both the plate and the engine.

## OPERATION

---

Grip the handle firmly with both hands. To avoid injury, keep hands, fingers, and feet away from the compactor base. Grip the handle of the compactor firmly with both hands. If both hands are holding the handle and your feet are clear of the compactor base, your hands, fingers, and feet cannot be injured by the plate. Adjust the throttle lever between its “MIN” to “MAX” position, depending on the desired vibration speed.

**IMPORTANT:** The plate compactor should not be used for more than two hours at a time without any breaks to cool down, as the heat of operation may cause the lubricant in the bearings to liquefy, which could leak out and cause significant problems.

The handle can be adjusted to both sides to aid in turnarounds in tight spaces, but the compactor only travels in the direction shown in the “Know Your Plate Compactor” section (Page 7).

Always keep a safe distance away from the edge of ditches and avoid any actions that may cause the plate compactor to topple over.

Always ascend slopes carefully in a direct path. Back up slopes to prevent the plate compactor from toppling back onto the operator.

**IMPORTANT:** At this point the user should be familiar with the procedures. If the user has not yet read the previous sections, go back and read it now.

### **STEP 1 - CHECK THE OIL:**

Oil consumption is normal during plate compactor usage. The plate compactor is equipped with a low-oil shutoff to protect it from damage. The oil level in the engine should be checked before each use to ensure that the engine crankcase contains sufficient lubricant. If oil level is low, refer back to the “Preparation” section (Page 8).

### **STEP 2 – CHECK THE FUEL LEVEL:**

Before starting the plate compactor, check to see that there is sufficient gasoline in the fuel tank. The fuel gauge on top of the plate compactor will indicate the fuel level in the tank. Add gasoline if necessary but leave sufficient room in tank for expansion. If gasoline is low, refer back to the “Preparation” section (Page 9).



**WARNING:** This plate compactor may emit highly flammable and explosive gasoline vapors, which can cause severe burns or even death if ignited. A nearby open flame can lead to explosion even if not directly in contact with fuel.

- Do not operate near open flame. Do not smoke near plate compactor.
- Always operate on a firm, level surface.
- Always turn engine off before refueling. Allow engine to cool for at least 2 minutes before removing fuel cap. Loosen cap slowly to relieve pressure in tank.
- Do not overfill fuel tank. Gasoline may expand during operation. Do not fill to the top of the tank.
- Always check for spilled fuel before operation. Clean up any spilled fuel before starting.
- Empty fuel tank before storing or transporting the plate compactor.
- Before transporting, turn the fuel valve off and disconnect spark plug boot.
- Use only UNLEADED gasoline with an octane rating of 87 or higher.
- Do not use old gasoline.
- Never use an oil/gasoline mixture.
- Avoid letting dirt or water into the fuel tank.

# OPERATION

---

## STOPPING THE PLATE COMPACTOR:

1. Move handle lever to “MIN” position to disengage the compactor.
2. Turn the engine switch to the “OFF” position.
3. Turn the fuel valve to the “OFF” position.

FOR EMERGENCY SHUTDOWNS, move the throttle to the idle position and turn the engine switch OFF.



**WARNING:** Allow the unit to cool for several minutes before touching areas that become hot during use.

**CAUTION:** Allowing gasoline to sit in the fuel tank for long periods of time can make it difficult to start the plate compactor in the future. Never store the plate compactor for over two weeks with fuel in the fuel tank. If sitting more than a month, drain the carburetor.

# MAINTENANCE

---

Proper routine maintenance will help prolong the life of the machine. Please perform maintenance checks according to the schedule below. If there are any questions about the maintenance procedures listed in this manual, please call (800) 232-1195 M-F 8-5CT. It is best practice to drain your carburetor after every use. Always drain before storage. Do not store the plate compactor with fuel inside the tank for more than 2 weeks. This will cause the carburetor to clog and will need to be disassembled and cleaned before the next use. Run the plate compactor for 15 minutes a month to maximize its lifespan. Refer to the next page for drainage procedures.

**CAUTION:** Never perform maintenance operations while the plate compactor is running.

| Fig. 4<br>Recommended<br>Maintenance Schedule<br>(Clean more as necessary) |             | Each Use | First<br>Month,<br>then Every<br>20 Hours | Every 3<br>Months or<br>50 Hours | Every 6<br>Months or<br>100 Hours | Every<br>Year or<br>300 Hours |
|--|-------------|----------|---|----------------------------------|-----------------------------------|-------------------------------|
| Engine Oil   | Check level | x        |   |                                  |                                   |                               |
|  | Replace     |          | x   | x                                |                                   |                               |
| Air Cleaner  | Check       | x        |   |                                  |                                   |                               |
|  | Clean       |          |   | x                                |                                   |                               |
| Spark plug   | Check/clean |          |   |                                  | x                                 |                               |
| Fuel tank  | Check level | x        |   |                                  |                                   |                               |
|  | Clean       |          |   |                                  |                                   | x                             |

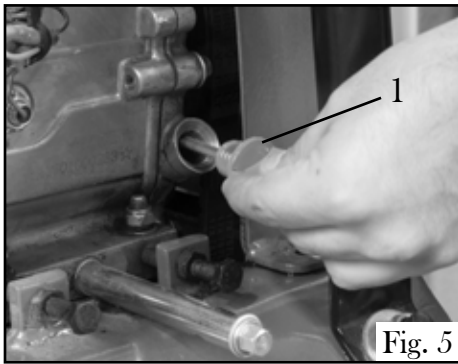
## CLEANING THE PLATE COMPACTOR:

Never clean the plate compactor when it is running! If the plate compactor becomes dirty, clean the exterior with a damp cloth, a soft brush, or vacuum/pressurized air.

## CHECKING THE OIL:

Check the oil level of the engine according to the Recommended Maintenance Schedule (Fig. 4). The engine is equipped with an automatic shutoff to protect it from running with low oil pressure. The engine should be checked before each use for proper oil level. This is a critical step for proper engine maintenance.

# MAINTENANCE

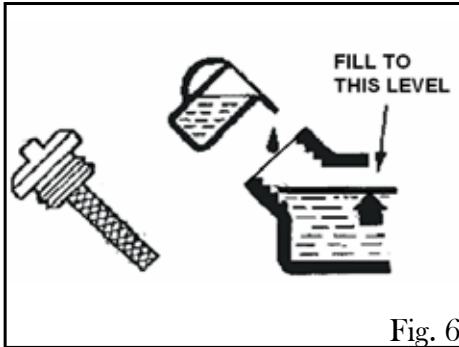


## FILLING CRANKCASE WITH OIL:

1. Make sure the plate compactor is on a level surface. Tilting the plate compactor to assist in filling will cause oil to flow into engine areas and will cause damage. Keep plate compactor level!

2. Remove the oil filler/dipstick cap (Fig. 5 - 1) from the engine.

3. Using a funnel, add the appropriate type and amount of oil into the crankcase. The crankcase is full when the oil level has reached the second thread from the lip of the opening (Fig. 6).



4. Check for oil leaks. Reinstall oil filler cap before starting engine.

## CHANGING THE OIL:

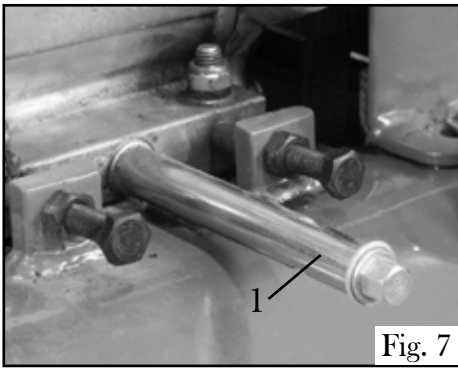
Change the oil when the engine is warm. This will allow for complete drainage. Change oil more often if operating under heavy load or high ambient temperatures. It is also necessary to drain the oil from the crankcase if it has become contaminated with water or dirt. The oil capacity of the engine in this plate compactor is 20 fl. oz (0.6 L). Add oil when the oil level is low.

## DRAINING THE OIL FROM THE ENGINE:

1. Place a container underneath the engine to catch oil as it drains.

2. Use an open-end wrench to securely hold the oil drain plug in place. Then, using a hex wrench, unscrew the oil drain plug (Fig. 7 - 1). Allow all the oil to drain from the engine.

3. Reinstall the oil drain plug and tighten with a hex wrench.



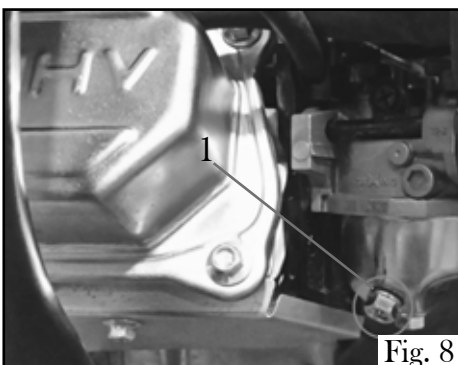
**NOTE:** Never dispose of used motor oil in the trash or down a drain. Please call your local recycling center or auto garage to arrange oil disposal.

## DRAINING THE CARBURETOR:

1. Turn the fuel valve to "OFF".

2. Locate the drain screw (Fig. 8 - 1) on the carburetor bowl. Prepare a pan, jar, or other approved gasoline storage container to catch the fuel that will leak out.

3. Loosen the drain screw and allow the fuel to drain completely. When it is done draining, re-tighten the drain screw.



# MAINTENANCE

## AIR CLEANER MAINTENANCE:

Routine maintenance of the air cleaner helps maintain proper air flow to the carburetor. Check that the air cleaner is free of excessive dirt.

1. Remove air cleaner cover (Fig. 9 - 1). Remove both elements and inspect them for holes or tears. Replace damaged elements.
2. Tap paper element (Fig. 9 - 2) lightly to remove excess dirt. Replace paper element if it appears heavily soiled.
3. Wash foam element (Fig. 9 - 3) in solution of mild detergent and warm water. Rinse thoroughly in clean water. Allow element to dry thoroughly. Soak element in clean engine oil and squeeze out excess oil.

## SPARK PLUG MAINTENANCE:

The spark plug is important for proper engine operation. A good spark plug should be intact, free of deposits, and properly gapped. To inspect the spark plug (NGK BP7GS):

1. Pull on the spark plug boot to remove it (Fig. 10 - 1).
2. Unscrew the spark plug from the plate compactor using the spark plug wrench included with this product. (Fig. 11 - 1).
3. Visually inspect the spark plug. If it is cracked or chipped, discard and replace with a new spark plug of the same model (NGK BP7GS).
4. Measure the plug gap with a spark plug gauge (Fig. 12). The gap should be 0.7-0.8 mm (0.028 - 0.031 in).
5. If you are re-using the spark plug, use a wire brush to clean any dirt from around the spark plug base and then re-gap the spark plug.
6. Screw the spark plug back into its place on the plate compactor using the spark plug wrench. Do not over-tighten spark plug. Recommended tightening of spark plug is  $\frac{1}{2}$  to  $\frac{3}{4}$  of a turn after spark plug gasket contacts spark plug hole. Reinstall the spark plug boot.

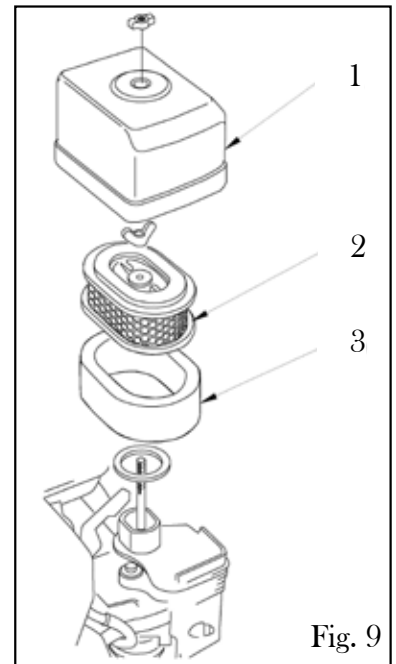


Fig. 9

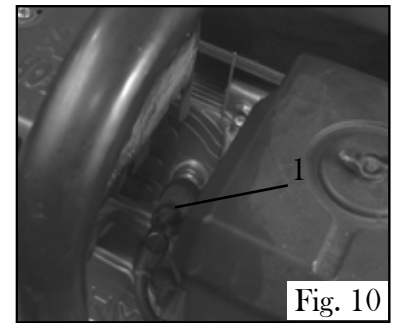


Fig. 10

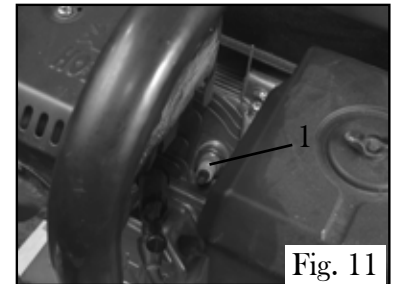


Fig. 11

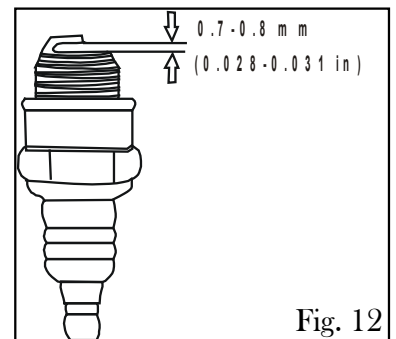
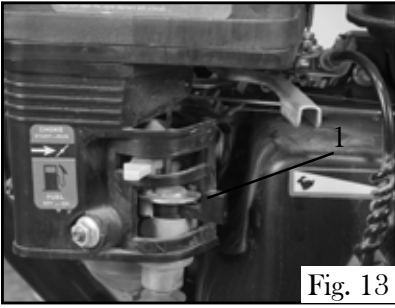


Fig. 12

## MAINTENANCE

---

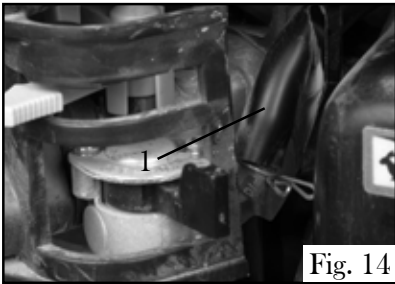


### **DRAINING THE FUEL TANK:**

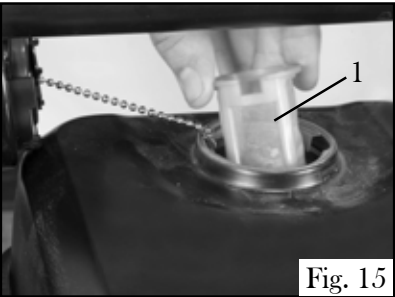
Clean the fuel tank each year or before storing the plate compactor for extended periods of time. To drain the fuel tank and carburetor:

1. Turn the fuel valve to the “OFF” position (Fig. 13 - 1).
2. Remove the fuel line between the fuel valve and carburetor (Fig. 14 - 1)

**CAUTION:** A small amount of fuel may leak from the hose during removal.



3. Attach a fuel line (not included with the plate compactor) to exposed end of the fuel valve.
4. Position fuel line into an appropriate container and open the fuel valve allowing fuel to flow into the container.



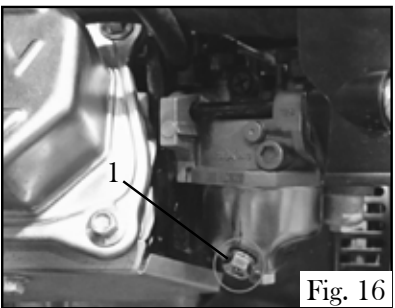
5. Once fuel is drained, shut off the fuel valve.
6. Start and run the engine until fuel runs out.
7. Unscrew the gas tank cap from the gas tank.
8. Remove the fuel filter cup located inside (Fig. 15 - 1).

9. Empty the fuel filter cup of any fuel and clean.

10. Reinstall the fuel filter cup.

11. Screw the gas tank cap back onto the gas tank.

12. Store the emptied gasoline in a suitable place.



**CAUTION:** Do not store fuel for more than 3 months.

### **DRAINING THE FUEL TANK THROUGH THE CARBURETOR:**

1. Turn fuel valve to “ON”.
2. Loosen drain screw from carburetor (Fig. 16 - 1). Be sure to have a vessel prepared to catch the fuel that will flow out.
3. Ensure that all fuel has left the tank, fuel line, and carburetor.
4. Tighten the drain screw.
5. Turn the fuel valve to “OFF”.



## MAINTENANCE

---

### **STORING THE PLATE COMPACTOR:**

If the unit is being stored for short periods of time (30 to 60 days), then when taking the unit out of storage, add gasoline and fuel stabilizer in the proper ratio to the tank until the tank is full.

**NOTE:** Filling the tank reduces the amount of air in the tank and helps reduce deterioration of fuel. Run the engine for 5 - 10 minutes allowing stabilized fuel mixture to circulate through the carburetor.

When storing the plate compactor for extended periods of time:

- Drain the fuel tank and the carburetor.
- Change oil.
- Do not obstruct any ventilation openings.
- Keep the plate compactor in a cool dry area.

When transporting plate compactor:

- Tighten fuel cap. Drain the fuel tank if possible.
- Keep the plate compactor upright. Never place plate compactor side down. Doing so will make it difficult to start.

**CAUTION:** Never place any type of storage cover on the plate compactor while it is still hot.



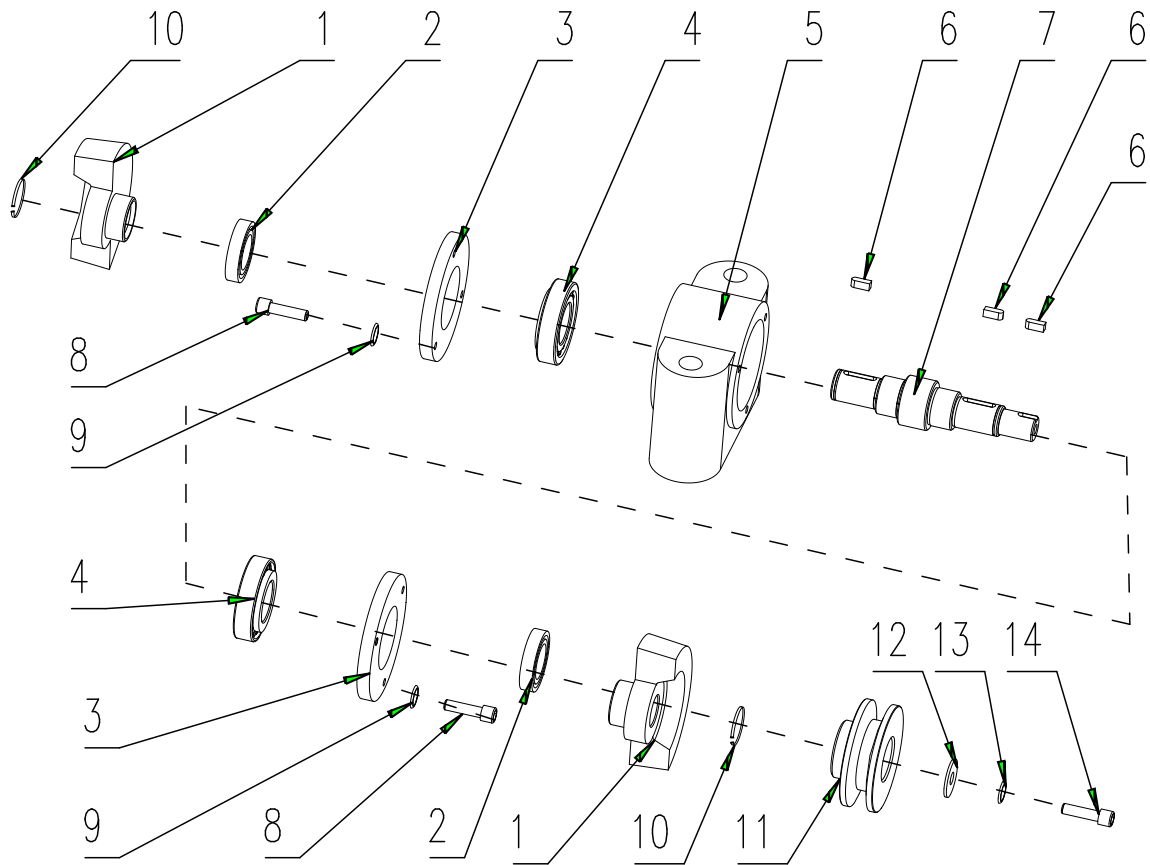
# TROUBLESHOOTING

---

**IMPORTANT:** If trouble persists, please email [techsupport@wenproducts.com](mailto:techsupport@wenproducts.com) or call our customer help line at (800) 232-1195 M-F 8-5 Central Time.

| PROBLEM  | CAUSE   | SOLUTION   |
|--|---|--|
| Engine will not start.                           | Engine switch is set to “OFF.”                        | Set engine switch to “ON.”   |
|  | Fuel valve is turned to “OFF.”                        | Turn the fuel valve to the “ON” position.  |
|  | Choke is open.  | Close the choke.   |
|  | Engine is out of fuel.                                | Add gasoline.  |
|  | Engine is filled with contaminated or old gasoline.   | Change the gasoline in the gas tank and drain/clean the carburetor.                                  |
|  | Spark plug is dirty.                                  | Clean spark plug.  |
|  | Spark plug is broken.                                 | Replace spark plug.  |
|  | Plate compactor is not on a level surface.            | Move plate compactor to a level surface to prevent low oil shutdown from triggering.                 |
|  | Oil is low.   | Add or replace oil.  |
| Engine runs but the plate compactor doesn't work | Carburetor is air locked.                             | Shut off the fuel valve and remove the screw from the bottom of the carburetor to allow it to reset. |
|  | Operating speed of throttle incorrectly set           | Set throttle lever to correct position.  |
|  | Excess oil  | Drain the excess oil.  |
|  | Clutch has slipped                                    | Replace or adjust the clutch   |
|  | Spring failure  | Replace spiral spring.   |
| Not enough power behind plate compactor          | Incorrect Engine Speed                                | Adjust the engine speed to meet the task at hand.  |
|  | Air cleaner clogged                                   | Clean or replace the air cleaner element.  |
|  | Air in fuel line                                      | Bleed air from the fuel line.  |
|  | Fuel level in carburetor's float chamber is improper. | Adjust the carburetor float.   |
|  | Carbon deposits in cylinder.                          | Clean or replace the cylinder.   |
| Engine overheats                                 | Fuel has gone bad.                                    | Flush the system and replace with fresh fuel and stabilizer  |
|  | Contaminants in fuel tank.                            | Flush the system and replace with fresh fuel.  |
|  | Carbon deposits in combustion chamber.                | Clean/replace crankcase.   |
|  | Exhaust or muffler clogged.                           | Clean/replace the muffler.   |
| Recoil starter not working                       | Incorrect spark plug.                                 | Replace with correct spark plug.   |
|  | Dust in rotating parts                                | Clean the recoil starter assembly.   |

# EXPLODED VIEW AND PARTS LIST (VIBRATOR ASSEMBLY)



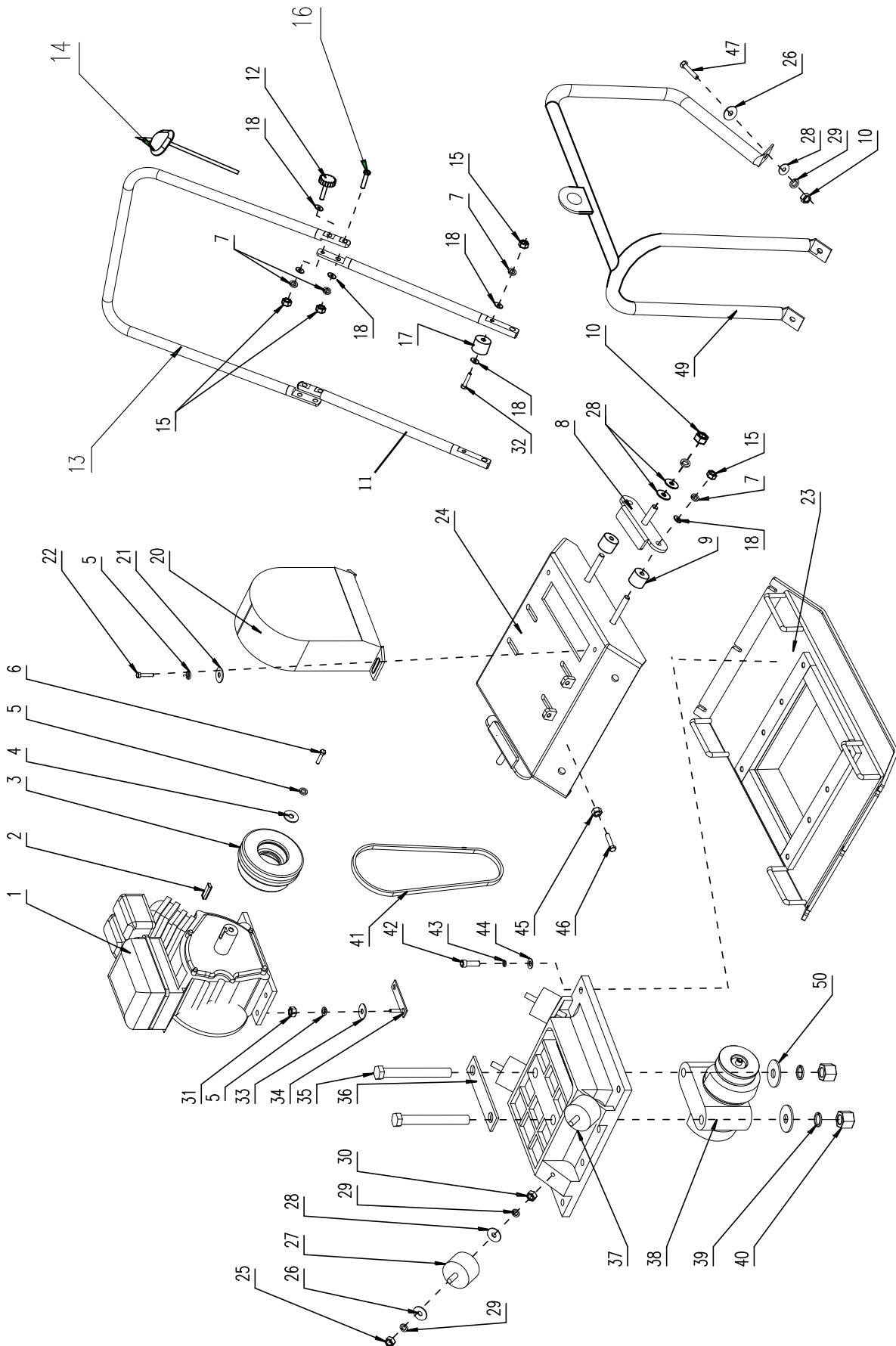
## EXPLODED VIEW AND PARTS LIST (VIBRATOR ASSEMBLY)

---

| No. | Part Number | Description         | Specification | Qty. |
|-----|-------------|---------------------|---------------|------|
| 1   | 56035-G-001 | Eccentric Block     |               | 2    |
| 2   | 56035-G-002 | Oil Seal            | 28 x 50 x 10  | 2    |
| 3   | 56035-G-003 | Bearing Cover       |               | 2    |
| 4   | 56035-G-004 | Bearing             | 6306          | 2    |
| 5   | 56035-G-005 | Bearing Seat        |               | 1    |
| 6   | 56035-G-006 | Key                 | 6 x 6 x 20    | 3    |
| 7   | 56035-G-007 | Main Shaft          |               | 1    |
| 8   | 56035-G-008 | Inner Hexagon Bolt  | M6 x 16       | 6    |
| 9   | 56035-G-009 | Spring Gasket       | Ø6            | 6    |
| 10  | 56035-G-010 | Clip                | Ø24           | 2    |
| 11  | 56035-G-011 | Pulley              | 84 x 35       | 1    |
| 12  | 56035-G-012 | Conical Flat Gasket | 8 x 30 x 6    | 1    |
| 13  | 56035-G-013 | Spring Gasket       | Ø8            | 1    |
| 14  | 56035-G-014 | Inner Hexagon Bolt  | M8 x 20       | 1    |

NOTE: These parts are only available as a complete assembly (vibrator assembly, part 56035-023).  
If you wish to purchase this assembly, please visit [www.wenproducts.com](http://www.wenproducts.com)

# EXPLODED VIEW AND PARTS LIST (PLATE COMPACTOR)



## EXPLODED VIEW AND PARTS LIST (PLATE COMPACTOR)

| No. | Part Number | Description            | Specification | Qty. |
|-----|-------------|------------------------|---------------|------|
| 1   | 56035-E-000 | Engine                 |               | 1    |
| 2   | 56035-147   | Key                    | 5*40          | 1    |
| 3   | 56035-020   | Pulley                 |               | 1    |
| 4   | 56035-019   | Washer                 | M8×30×6       | 1    |
| 5   | 56035-018   | Spring Washer          | Ø 8           | 5    |
| 6   | 56035-017   | Hex Bolt               | M8*30         | 1    |
| 7   | 56035-005-3 | Washer                 | Ø 10          | 6    |
| 8   | 56035-048   | Handle Fixed Plate     |               | 2    |
| 9   | 56035-049   | Handle Rubber Damper   |               | 4    |
| 10  | 56035-050   | Locked Nut             | M12           | 2    |
| 11  | 56035-005L  | Lower handle           |               | 2    |
| 12  | 56035-051   | Locked Pin Assembly    | M10*35        | 2    |
| 13  | 56035-005H  | Upper handle           |               | 1    |
| 14  | 56035-046   | Throttle Line Assembly |               | 1    |
| 15  | 56035-005-2 | Locked Nut             | M10           | 2    |
| 16  | 56035-005-6 | Flange Bolt            | M10*35        | 2    |
| 17  | 56035-005-7 | Handle Damper          |               | 2    |
| 18  | 56035-005-4 | Washer                 | Ø 10          | 14   |
| 20  | 56035-015   | Belt Cover             |               | 1    |
| 21  | 56035-014   | Washer                 | Ø8*24         | 2    |
| 22  | 56035-012   | Bolt                   | M8*20         | 2    |
| 23  | 56035-030   | Bottom Plate           |               | 1    |
| 24  | 56035-031-1 | Engine Support Plate   |               | 1    |
| 25  | 56035-035   | Locked Nut             | M12           | 4    |
| 26  | 56035-003   | Washer                 | 12*35         | 4    |
| 27  | 56035-032   | Shock Absorber         |               | 4    |
| 28  | 56035-028   | Washer                 | Ø12           | 4    |
| 29  | 56035-027   | Spring Washer          | Ø12           | 4    |
| 30  | 56035-026   | Nut                    | M12           | 4    |
| 31  | 56035-052   | Locked Nut             | M8            | 4    |
| 32  | 56035-005-8 | Hex Bolt               | M10*65        | 2    |
| 33  | 56035-009   | Washer                 | Ø8            | 4    |
| 34  | 56035-053   | Hex Bolt               | M8*45         | 2    |
| 35  | 56035-024   | Hex Bolt               | M18*140       | 2    |
| 36  | 56035-025   | Press Plate            |               | 1    |
| 37  | 56035-031-2 | Exciter Seat           |               | 1    |
| 38  | 56035-023   | Vibrator Assembly      |               | 1    |
| 39  | 56035-022   | Spring & Flat Washer   | Ø18           | 2    |
| 40  | 56035-021   | Nut                    | M18           | 2    |
| 41  | 56035-016   | Belt                   | B-787         | 1    |
| 42  | 56035-038   | Hex Bolt               | M12*35        | 8    |
| 43  | 56035-037   | Spring Washer          | Ø12           | 8    |
| 44  | 56035-036   | Flat Washer            | Ø12           | 8    |
| 45  | 56035-043   | Nut                    | M8            | 2    |
| 46  | 56035-042   | Hex Bolt               | M8*50         | 2    |
| 47  | 56035-002   | Hex Bolt               | M10*30        | 1    |
| 49  | 56035-001   | Frame                  |               | 1    |
| 50  | 56035-054   | Washer                 | Ø18           | 2    |

# EXPLODED VIEW AND PARTS LIST (ENGINE)

NOTE: The entire engine is available as a single assembly under model number 56035-E-000.

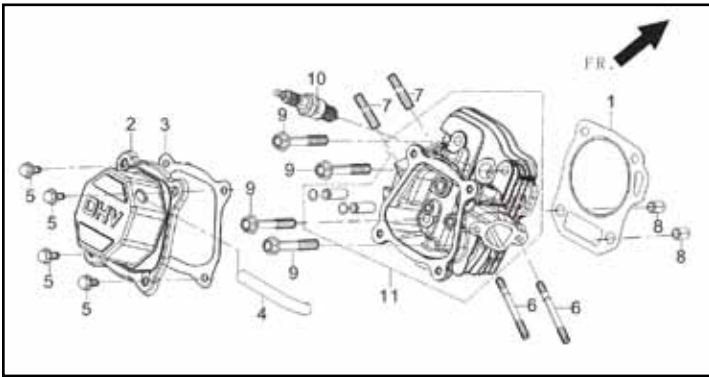


Fig. 1 - Cylinder Head Assembly

| No.         | Part        | Description                  | Qty. |
|-------------|-------------|------------------------------|------|
| Fig. 1 - 1  | 56035-E-001 | Cylinder Head Gasket         | 1    |
| Fig. 1 - 2  | P54066      | Cylinder Head Cover Assembly | 1    |
| Fig. 1 - 3  | P54064      | Cylinder Head Cover Gasket   | 1    |
| Fig. 1 - 4  | 56035-E-004 | Breather Tube                | 1    |
| Fig. 1 - 5  | P54040      | Bolt                         | 4    |
| Fig. 1 - 6  | 56035-E-006 | Stud                         | 2    |
| Fig. 1 - 7  | P54058      | Stud                         | 2    |
| Fig. 1 - 8  | P54048      | Pin                          | 2    |
| Fig. 1 - 9  | P54062      | Cylinder Head Bolt           | 4    |
| Fig. 1 - 10 | P54060      | Spark Plug                   | 1    |
| Fig. 1 - 11 | P54054      | Cylinder Head Subassembly    | 1    |

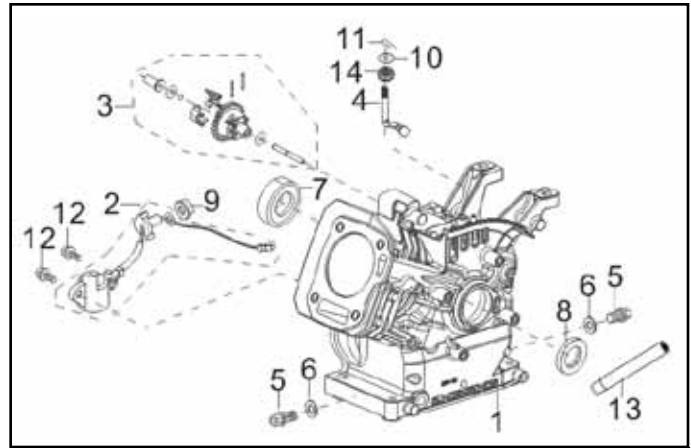
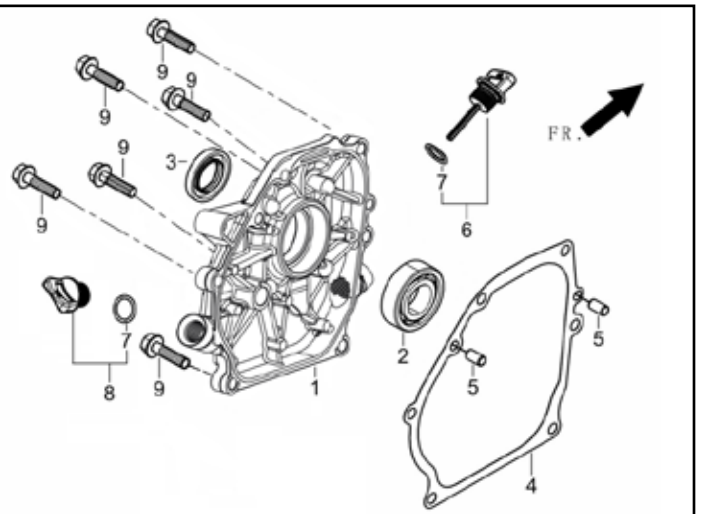


Fig. 2 - Crankcase Assembly

| No.         | Part        | Description            | Qty. |
|-------------|-------------|------------------------|------|
| Fig. 2 - 1  | 56035-E-012 | Crankcase Subassembly  | 1    |
| Fig. 2 - 2  | P54020      | Engine Oil Sensor      | 1    |
| Fig. 2 - 3  | P54031      | Governor Gear Assembly | 1    |
| Fig. 2 - 4  | P54014      | Governor Arm           | 1    |
| Fig. 2 - 5  | 56035-E-016 | Drain Plug Bolt        | 2    |
| Fig. 2 - 6  | P54002      | Washer                 | 2    |
| Fig. 2 - 7  | 56035-E-018 | Bearing                | 1    |
| Fig. 2 - 8  | P54008      | Oil Seal               | 1    |
| Fig. 2 - 9  | P54003      | Nut                    | 1    |
| Fig. 2 - 10 | 56035-E-020 | Washer                 | 1    |
| Fig. 2 - 11 | 56035-E-021 | Pin                    | 1    |
| Fig. 2 - 12 | 56035-E-022 | Bolt                   | 2    |
| Fig. 2 - 13 | 56035-E-100 | Oil Drain Tube         | 1    |
| Fig. 2 - 14 | 56035-E-101 | Seal Guide             | 1    |

Fig. 3 - Crankcase Cover Assembly

| No.        | Part        | Description                 | Qty. |
|------------|-------------|-----------------------------|------|
| Fig. 3 - 1 | 56035-E-023 | Crankcase Cover             | 1    |
| Fig. 3 - 2 | 56035-E-018 | Bearing                     | 1    |
| Fig. 3 - 3 | P54008      | Oil Seal                    | 1    |
| Fig. 3 - 4 | P54080      | Crankcase Gasket            | 1    |
| Fig. 3 - 5 | P54082      | Pin                         | 2    |
| Fig. 3 - 6 | P54086      | Oil Dipstick Subassembly    | 1    |
| Fig. 3 - 8 | 56035-E-029 | Engine Oil Plug Subassembly | 1    |
| Fig. 3 - 9 | P54092      | Bolt                        | 6    |



## EXPLODED VIEW AND PARTS LIST (ENGINE)

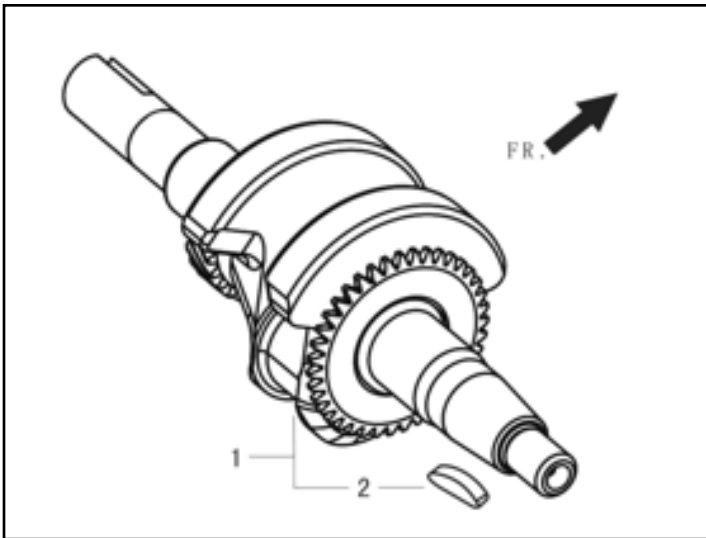


Fig. 4 - Crankshaft

| No.        | Part        | Description         | Qty. |
|------------|-------------|---------------------|------|
| Fig. 4 - 1 | 56035-E-031 | Crankshaft Assembly | 1    |

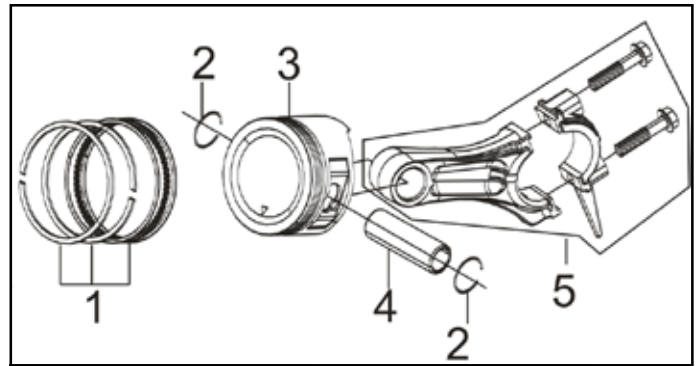


Fig. 5. Piston Ring/Connecting Rod

| No.        | Part   | Description          | Qty. |
|------------|--------|----------------------|------|
| Fig. 5 - 1 | P54105 | Piston Ring Assembly | 1    |
| Fig. 5 - 2 | P54106 | Piston Ring Clip     | 2    |
| Fig. 5 - 3 | P54109 | Piston               | 1    |
| Fig. 5 - 4 | P54112 | Piston Pin           | 1    |
| Fig. 5 - 5 | P54121 | Connecting Rod       | 1    |

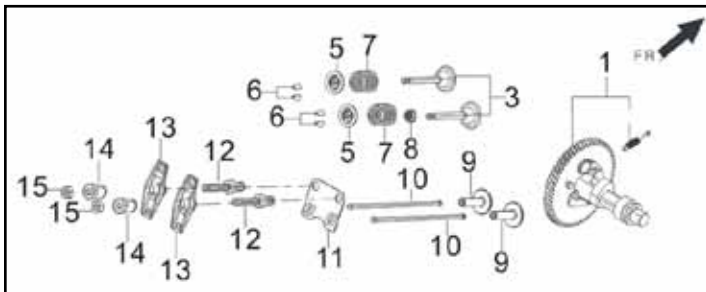


Fig. 6 - Valve/Camshaft

| No.         | Part        | Description               | Qty. |
|-------------|-------------|---------------------------|------|
| Fig. 6 - 1  | P54146      | Camshaft Assembly         | 1    |
| Fig. 6 - 3  | P54150      | Valve                     | 1    |
| Fig. 6 - 5  | 56035-E-043 | Valve Spring Seat         | 2    |
| Fig. 6 - 6  | P54160      | Valve Lock Clamp          | 4    |
| Fig. 6 - 7  | P54154      | Valve Spring              | 2    |
| Fig. 6 - 8  | P54161      | Seal Guide                | 1    |
| Fig. 6 - 9  | P54142      | Valve Tappet              | 2    |
| Fig. 6 - 10 | P54140      | Valve Lifter              | 2    |
| Fig. 6 - 11 | P54138      | Stopper Plate Subassembly | 1    |
| Fig. 6 - 12 | P54134      | Valve Adjusting Bolt      | 2    |

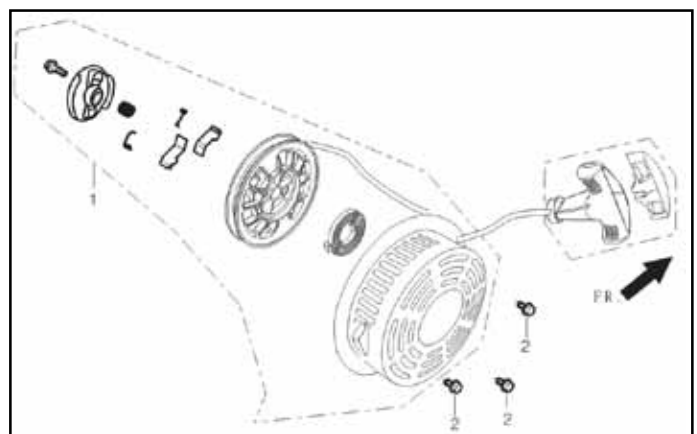


Fig. 7 - Recoil Starter

| No.        | Part        | Description             | Qty. |
|------------|-------------|-------------------------|------|
| Fig. 7 - 1 | 56035-E-054 | Recoil Starter Assembly | 1    |
| Fig. 7 - 2 | P54598      | Bolt                    | 3    |

| No.         | Part   | Description         | Qty. |
|-------------|--------|---------------------|------|
| Fig. 6 - 13 | P54132 | Valve Rocker        | 2    |
| Fig. 6 - 14 | P54130 | Valve Adjusting Nut | 2    |
| Fig. 6 - 15 | P54128 | Valve Lock Nut      | 2    |

## EXPLODED VIEW AND PARTS LIST (ENGINE)

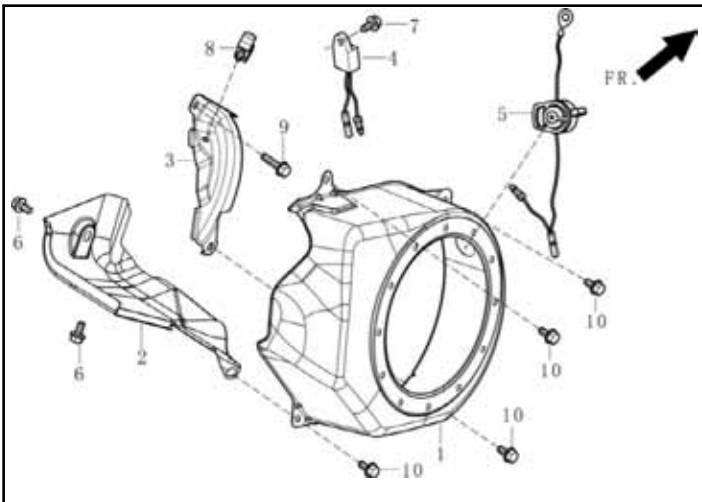


Fig. 8 - Shroud

| No.         | Part        | Description                    | Qty. |
|-------------|-------------|--------------------------------|------|
| Fig. 8 - 1  | P54668      | Shroud                         | 1    |
| Fig. 8 - 2  | 56035-E-058 | Cylinder Body Shroud           | 1    |
| Fig. 8 - 3  | 56035-E-059 | Lower Shield                   | 1    |
| Fig. 8 - 4  | P54612      | Oil Protector                  | 1    |
| Fig. 8 - 5  | 56035-E-061 | Stop Engine Switch Subassembly | 1    |
| Fig. 8 - 6  | P54040      | Bolt                           | 2    |
| Fig. 8 - 7  | P54040      | Bolt                           | 1    |
| Fig. 8 - 8  | P54596-1    | Collar                         | 1    |
| Fig. 8 - 9  | P54186      | Bolt                           | 1    |
| Fig. 8 - 10 | P54040      | Bolt                           | 4    |

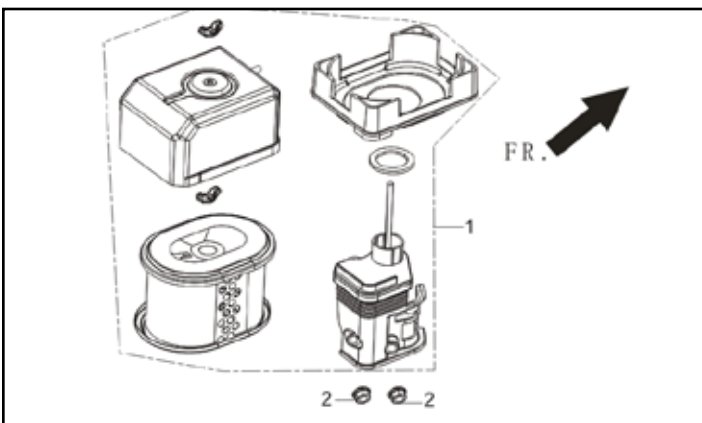


Fig. 10 - Air Cleaner

| No.         | Part          | Description         | Qty. |
|-------------|---------------|---------------------|------|
| Fig. 10 - 1 | 56035-E-073   | Air Cleaner         | 1    |
| Fig. 10 - 2 | P54179        | Nut                 | 2    |
| Fig. 10 - 3 | 56035-E-073-1 | Air Cleaner Element | 1    |

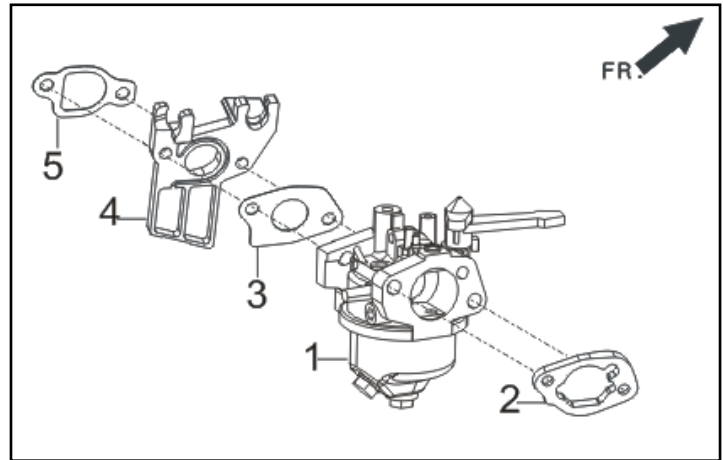


Fig. 9 - Carburetor Assembly

| No.        | Part        | Description                 | Qty. |
|------------|-------------|-----------------------------|------|
| Fig. 9 - 1 | 56035-E-067 | Carburetor Assembly         | 1    |
| Fig. 9 - 2 | 56035-E-068 | Air Cleaner Gasket          | 1    |
| Fig. 9 - 3 | P54166      | Carburetor Gasket           | 1    |
| Fig. 9 - 4 | P54164      | Carburetor Insulator Plate  | 1    |
| Fig. 9 - 5 | P54162      | Carburetor Insulator Gasket | 1    |

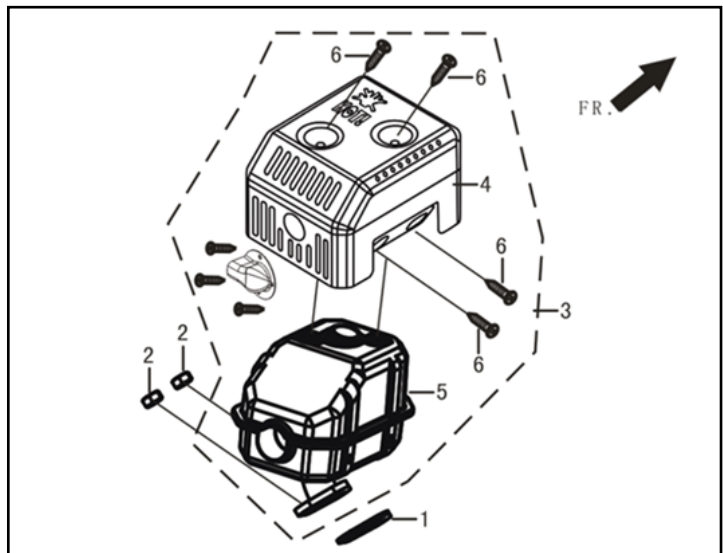


Fig. 11 - Muffler Assembly

| No.         | Part        | Description           | Qty. |
|-------------|-------------|-----------------------|------|
| Fig. 11 - 1 | P54426      | Exhaust Outlet Gasket | 1    |
| Fig. 11 - 2 | 56035-E-076 | Nut                   | 2    |
| Fig. 11 - 3 | 56035-E-077 | Muffler Assembly      | 1    |



## EXPLODED VIEW AND PARTS LIST (ENGINE)

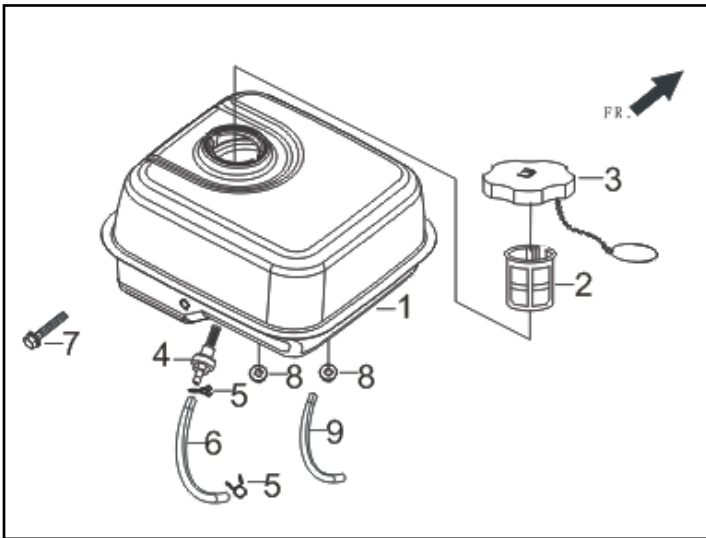


Fig. 12 - Gas Tank

| No.         | Part        | Description                      | Qty. |
|-------------|-------------|----------------------------------|------|
| Fig. 12 - 1 | 56035-E-078 | Fuel Tank                        | 1    |
| Fig. 12 - 2 | 56035-E-079 | Fuel Strainer                    | 1    |
| Fig. 12 - 3 | 56035-E-080 | Fuel Tank Cover                  | 1    |
| Fig. 12 - 4 | 56035-E-081 | Fuel Tank Oil Outlet Subassembly | 1    |
| Fig. 12 - 5 | 56035-E-082 | Collar                           | 2    |
| Fig. 12 - 6 | 56035-E-083 | Fuel Tube                        | 1    |
| Fig. 12 - 7 | 56035-E-084 | Bolt                             | 1    |
| Fig. 12 - 8 | P54179      | Nut                              | 2    |
| Fig. 12 - 9 | 56035-E-102 | Rubber Jacket                    | 1    |

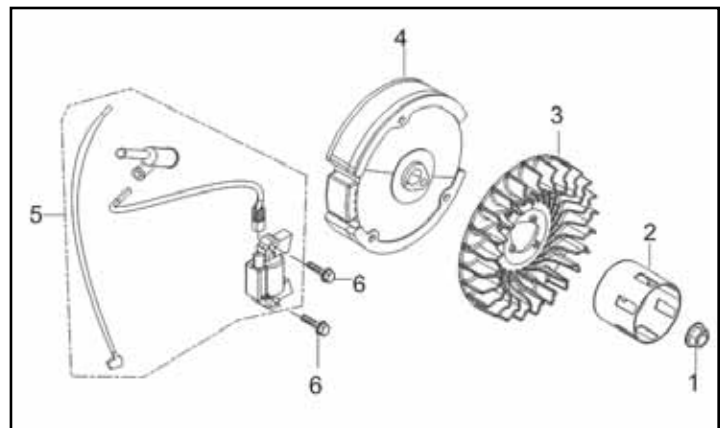


Fig. 13 - Flywheel/Impeller

| No.         | Part        | Description          | Qty. |
|-------------|-------------|----------------------|------|
| Fig. 13 - 1 | P54630      | Flywheel Nut         | 1    |
| Fig. 13 - 2 | 56035-E-087 | Starter Pulley       | 1    |
| Fig. 13 - 3 | P54634      | Impeller             | 1    |
| Fig. 13 - 4 | P54636      | Flywheel Subassembly | 1    |
| Fig. 13 - 5 | 56035-E-091 | Ignition Coil        | 1    |
| Fig. 13 - 6 | P54628      | Bolt                 | 2    |

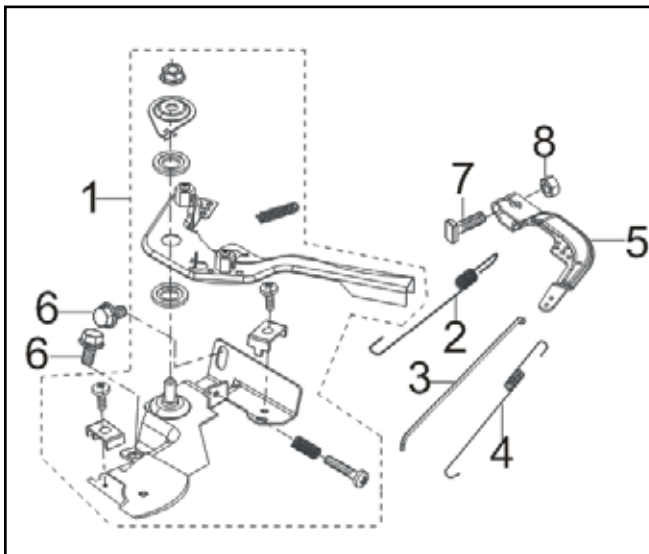


Fig. 14 - Control Assembly, Throttle

| No.         | Part        | Description                     | Qty. |
|-------------|-------------|---------------------------------|------|
| Fig. 14 - 1 | 56035-E-092 | Throttle Control Assembly       | 1    |
| Fig. 14 - 2 | 56035-E-094 | Governor Spring                 | 1    |
| Fig. 14 - 3 | P54620      | Governor Rod                    | 1    |
| Fig. 14 - 4 | P54618      | Throttle Valve Returning Spring | 1    |
| Fig. 14 - 5 | P54624      | Governor Support Subassembly    | 1    |
| Fig. 14 - 6 | P54040      | Bolt                            | 2    |
| Fig. 14 - 7 | P54622      | Governor Support Bolt           | 1    |
| Fig. 14 - 8 | P54179      | Nut                             | 1    |

## WARRANTY STATEMENT

---

Remember to save the receipt and to accurately fill out and mail the product registration card. Proof of purchase is required for all warranty work.

WEN® Plate Compactors are under warranty to be free from defects in materials and workmanship for a period of two (2) years from date of original purchase. Plate compactors used for Commercial or Rental use have a warranty period of 90 days from date of original purchase. Keep purchase receipt and mail in the product registration card for proof of purchase.

WEN® will repair or replace, at its discretion, any part that is proven to be defective in materials or workmanship under normal use during the two (2) years warranty period. Warranty repairs or replacements will be made without charge for parts or labor. Parts replaced during warranty repairs will be considered as part of the original product and will have the same warranty period as the original product.

To exercise the warranty, **DO NOT RETURN TO RETAILER**. Instead, call the toll free Customer Service number at (800) 232-1195 and you will be instructed on where to take the plate compactor for warranty service. Take the plate compactor and proof of purchase (the receipt) to the repair facility recommended by the Customer Service Representative. To make a claim under this Limited Warranty, you must make sure to keep a copy of your proof of purchase that clearly defines the Date of Purchase (month and year) and the Place of Purchase. Place of purchase must be a direct vendor of Great Lakes Technologies, LLC. Third party vendors such as garage sales, pawn shops, resale shops, or any other secondhand merchant void the warranty included with this product. Contact [techsupport@wenproducts.com](mailto:techsupport@wenproducts.com) or 1-800-232-1195 to make arrangements for repairs and transportation.

When returning a product for warranty service, the shipping charges must be prepaid by the purchaser. The product must be shipped in its original container (or an equivalent), properly packed to withstand the hazards of shipment. The product must be fully insured with a copy of the warranty card and/or the proof of purchase enclosed. There must also be a description of the problem in order to help our repairs department diagnose and fix the issue. Repairs will be made and the product will be returned and shipped back to the purchaser at no charge.

**THIS LIMITED WARRANTY DOES NOT APPLY TO ACCESSORY ITEMS THAT WEAR OUT FROM REGULAR USAGE OVER TIME INCLUDING BELTS, BRUSHES, BLADES, ETC.**

The warranty does not extend to plate compactors damaged or affected by fuel contamination, accidents, neglect, misuse, unauthorized alterations, use in an application for which the product was not designed and any other modifications or abuse.

WEN® is not liable for any indirect, incidental or consequential damages from the sale or use of this product. Any implied warranties are limited to two (2) years as stated in this written limited warranty. Some states do not allow the exclusion or limitation of incidental or consequential damages. Some states do not allow limitation on the length of an implied warranty. This warranty gives you specific legal rights, and you may have other rights that vary from state to state.

## Free Manuals Download Website

<http://myh66.com>

<http://usermanuals.us>

<http://www.somanuals.com>

<http://www.4manuals.cc>

<http://www.manual-lib.com>

<http://www.404manual.com>

<http://www.luxmanual.com>

<http://aubethermostatmanual.com>

Golf course search by state

<http://golfingnear.com>

Email search by domain

<http://emailbydomain.com>

Auto manuals search

<http://auto.somanuals.com>

TV manuals search

<http://tv.somanuals.com>