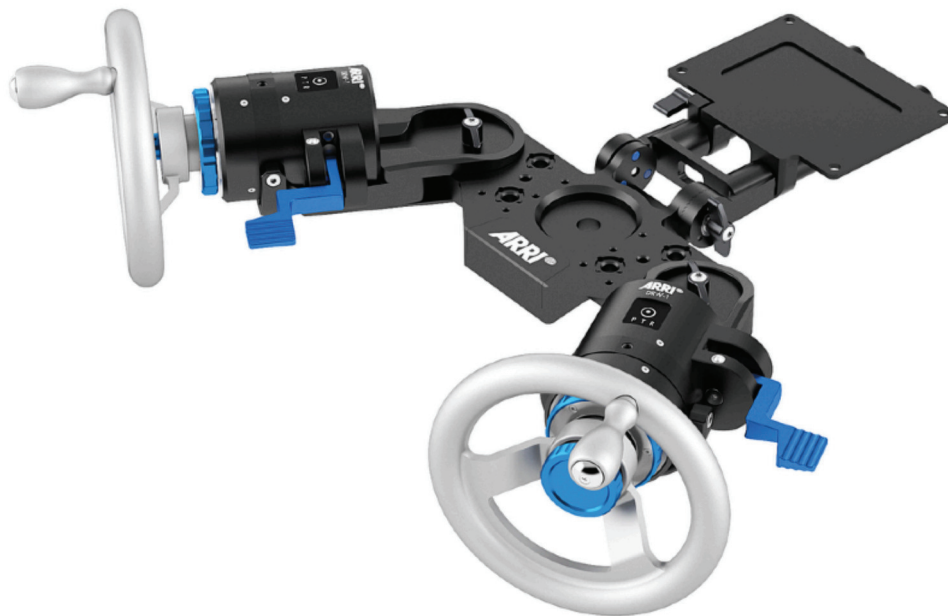


# Digital Remote Wheels DRW-1

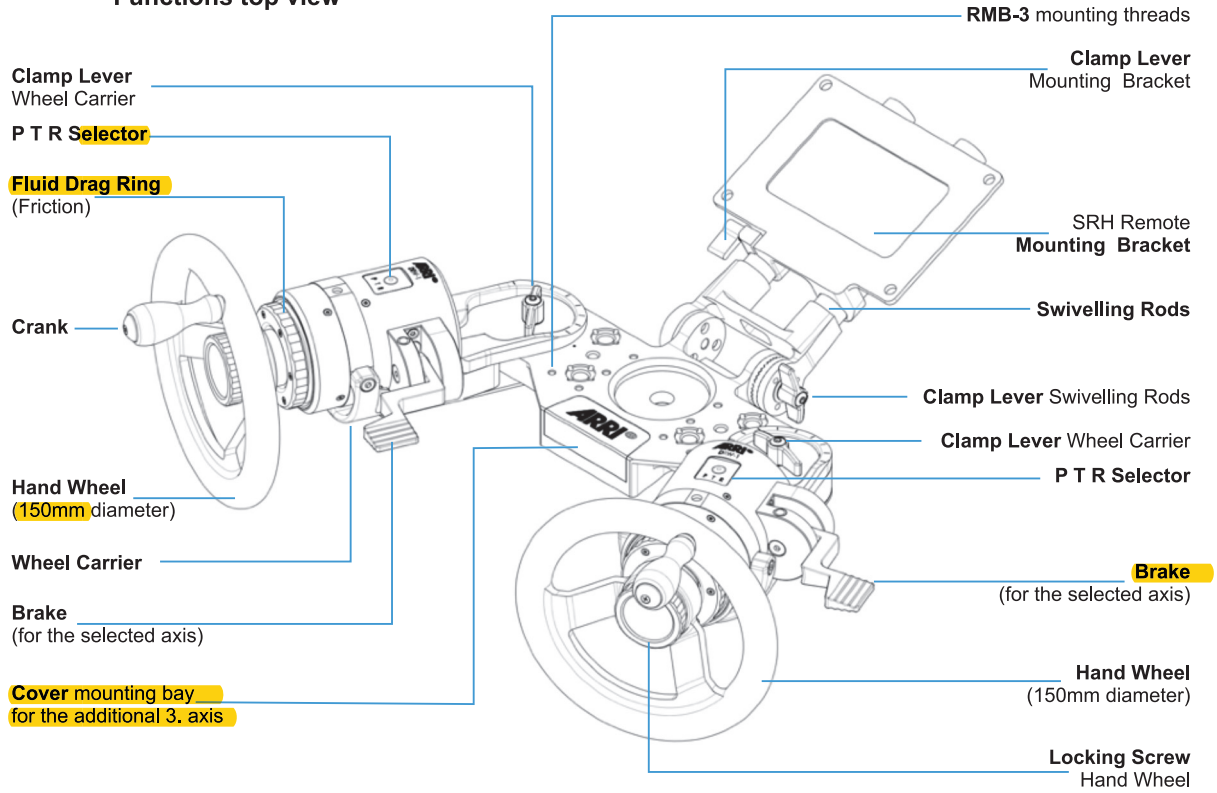
## USER MANUAL

Date 01.12.2018

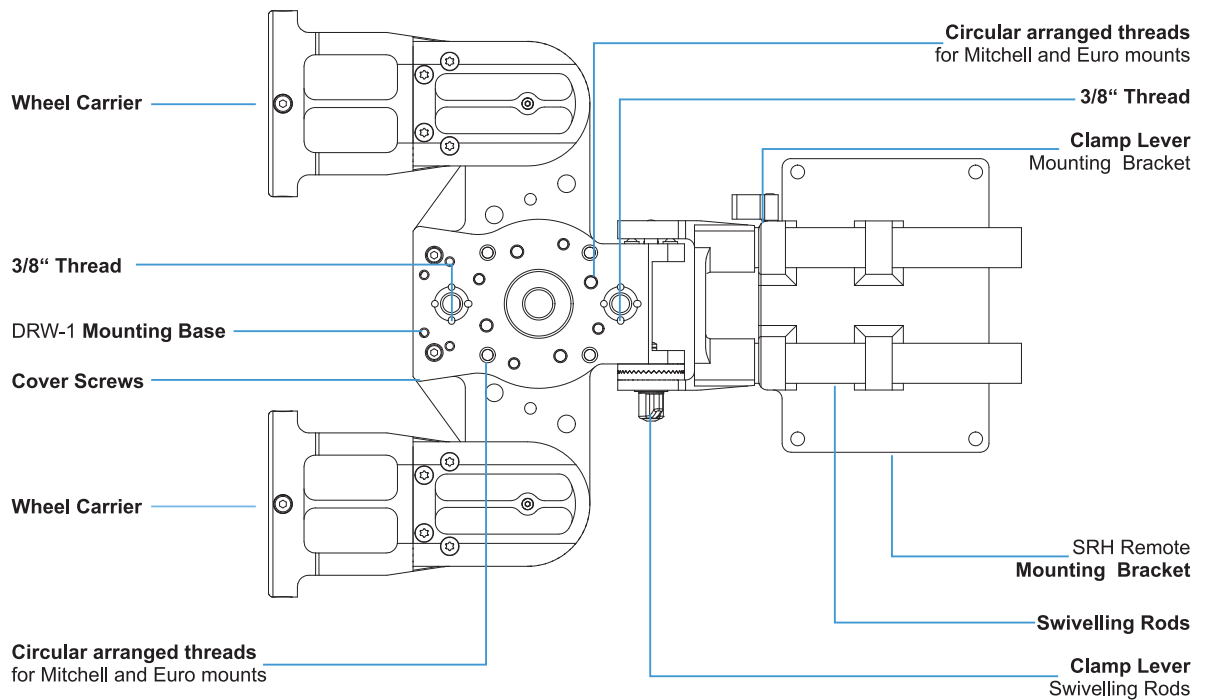


## 2 Functions

### 2.1 Functions top view



### 2.2 Functions bottom view



### 3 Assembling the DRW-1

#### 3.1

##### Mounting the DRW-1 base

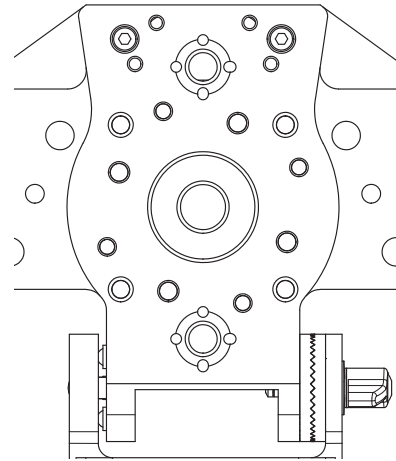
The bottom of the DRW-1 **mounting base** offers multiple mounting options:

3/8" threads for long camera dovetail plates, like the O'Connor plate code 08283, Euro style quick release plate code 2575-120, or the Sachtler sideload plate M code 1164.

At the bottom there are three circular arranged thread sets for Mitchell and Euro mounts. Mitchell Mount **K2.0010427**, Euro Mount **K2.0010426** and the O'Connor Mitchell Base code **08281** can be mounted to the bottom of the DRW-1 base.

#### NOTE

To ensure a tight fit, use a minimum of two 3/8" screws when a dovetail plate is used and four screws for the Euro Mount and the Mitchell Mount.



#### 3.2

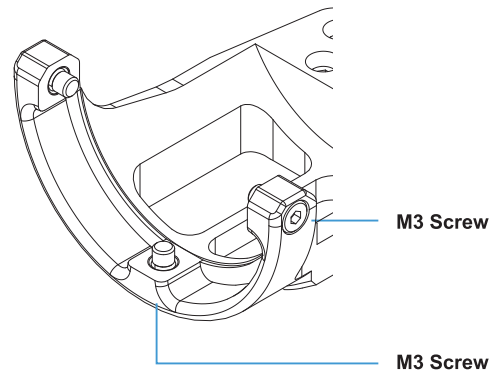
##### Mounting the DRW-1 modules

There are three M3 threads positioned at the left, at the bottom, and the right side of the DRW-1 module.

Place the DRW-1 module carefully into the DRW-1 carrier and tighten all three screws using a 3mm hex key.

#### NOTE

Ensure that all three screws are tightened evenly, otherwise the DRW-1 module will have a loose fit, which may affect the application.



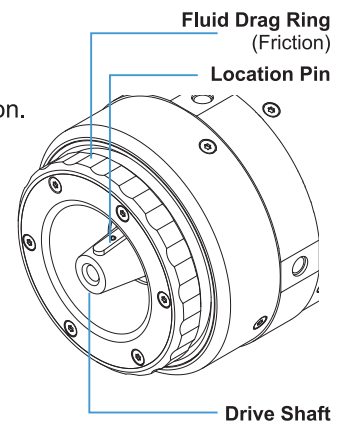
#### 3.3

##### Mounting the hand wheel

Turn the location pin of the drive shaft to a 12:00 o'clock position. Turn the blue **fluid drag ring** (friction) to the right to reach full friction. Locate the groove inside the mounting hole of the hand wheel and bring it into the 12:00 o'clock position too. Now place the wheel onto the conic drive shaft. When the hand wheel has reached its final position, tighten the blue locking screw.

#### NOTE

Turn the **fluid drag ring (friction)** fully back to the left to reach the lowest possible friction level.

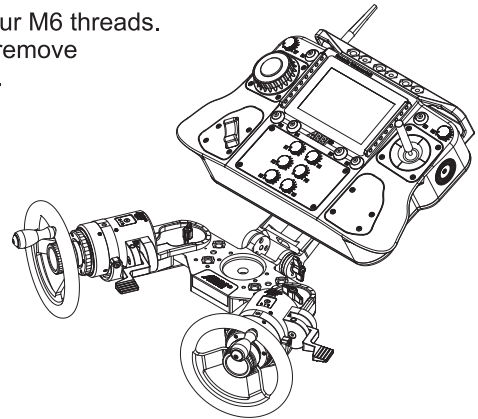


### 3.4 Mounting the SRH remote control panel

The bottom of the SRH-3 remote control panel offers four M6 threads. Open the clamp lever of the remote mounting bracket, remove the bracket from the rods of the DRW-1 mounting base. Place the DRW-1 SRH remote mounting bracket to the bottom of the SRH-3 remote control panel. Tighten the four included M6 screws.

#### **⚠ Danger**

**Do not use any screws longer than M6x12. Longer screws may cause damage.**



### 3.5 Adding the optional third hand wheel

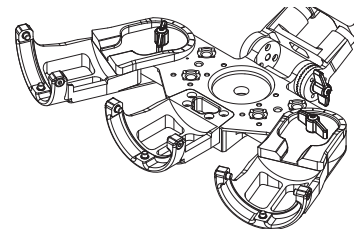
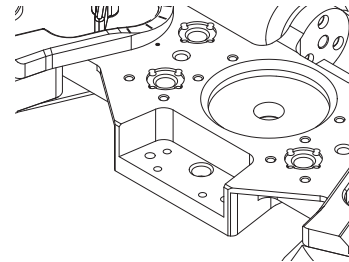
The ARRI engraved cover can be removed after the two screws at the bottom holding the cover have been unscrewed.

Now the third wheel carrier can be mounted to the bay.

Redo step 3.2.

#### **NOTE**

Ensure that all three screws are tightened evenly, otherwise the DRW-1 module will have a loose fit, which may affect the application.



## 5 Selecting the axes

Each DRW-1 module has a **selection button** for **P**an, **T**ilt and **R**oll, at the top.

Initially **R**oll of P T R will be selected and visible, after the SRH remote panel had been connected to the LBUS.

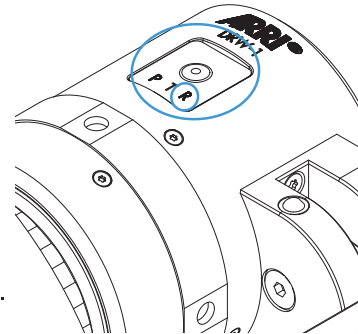
By pressing the button **P**an, **T**ilt and **R**oll, the desired axis for each wheel can be selected.

### CAUTION

Ensure that each wheel is assigned to only one individual axis. Avoid assigning two wheels to the same axis.

### CAUTION

A blue blinking LED indicates a problem in the LBUS daisy chain.



## 6 The brake

The DRW-1 wheels are equipped with a **brake** lever, which goes back to the ARRI Gear Head.

The brake lever allows the operator to engage or disengage the wheel from the selected motor axis.

### NOTE

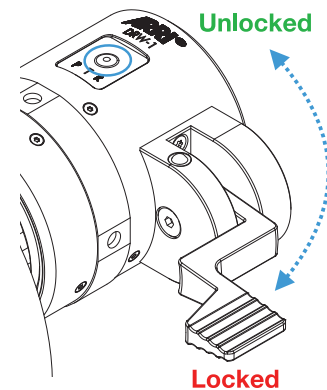
An **unlocked** wheel will be indicated by a **green** LED, A **locked** wheel will be indicated by a **red** LED.

### NOTE

Disengaging the wheels can also support operation.

When you need to reproduce a movement and you want the position of the crank to be at a certain angle, for example at the end of the movement, than first move the head to the desired end position, disengage the wheel and bring the crank to the required angle.

Now engage the wheel again and move the head backwards to the starting point. Start the movement from the beginning.

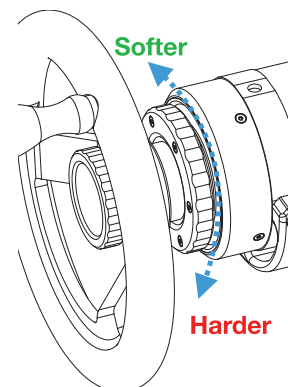


## 7 Fluid Drag Ring (friction)

The DRW-1 wheels are equipped with a **fluid drag ring**, which allows friction to be adjusted.

This unique feature allows the operator to manage the accuracy of the head through a mechanical friction adjustment, instead of a software value like Ramp or Damp.

The mechanical friction allows the setting of Ramp values in the remote SRH-3 remote control to zero, or close to zero. This will ensure that the DRW-1 wheels and the remote head reacting prompt and precise.



## 10 Technical Data

### 10.1 Sets.....KK.0021212

Contains:

2 x DRW-1 Module .....	K2.0019319
2 x Hand Wheel complete.....	150 N2.25004.A
1 x DRW-1 Mounting Base .....	K2.0019325
1 x Cable LBUS 0.3m/1ft .....	K2.0006750
1 x Cable LBUS 0.5m/1.5ft .....	K2.0006751
1 x DRW-1 Foam Set.....	90.0020791
4 x M6x12 stainless hex screws.....	O5.15436.0
1 x DRW-1 User Manual .....	K4.0021085

### Optional **Third Wheel Set..**.....KK.0021211

Contains:

1 x DRW-1 Module .....	K2.0019319
1 x Hand Wheel complete 150mm .....	N2.25004.A
1 x Cable LBUS – LBUS (0.5m/1ft) .....	K2.0006751
1 x DRW-1 THIRD-WHEEL-SET-PACKING-SET.....	90.0021210

### 10.2 Weight / Dimensions

Weight:

DRW-1 Modul .....	0,7kg / 1,5lb
DRW-1 Mounting Base .....	1,5kg / 3,3lb
Hand Wheel .....	0,8kg / 1,7lb

Outer dimensions foam.....	518 x 392 x 229 mm
	20,39 x 15,43 x 9,01 in

### 10.3 Environment

Temperature Range.....	-20°C - 50°C
	-04°F - 122°F

## Free Manuals Download Website

<http://myh66.com>

<http://usermanuals.us>

<http://www.somanuals.com>

<http://www.4manuals.cc>

<http://www.manual-lib.com>

<http://www.404manual.com>

<http://www.luxmanual.com>

<http://aubethermostatmanual.com>

Golf course search by state

<http://golfingnear.com>

Email search by domain

<http://emailbydomain.com>

Auto manuals search

<http://auto.somanuals.com>

TV manuals search

<http://tv.somanuals.com>