

Nova-436 Outdoor 4x1W TDD eNB Quick Start Guide



May 2018
Version 1.2

Introduction

This quick start guide is intended for experienced installers. It provides high-level milestones for installing the BaiCells Nova-436 Outdoor 4x1W TDD eNodeB. For more details, please refer to the *BaiCells Nova-436 Outdoor 4x1W TDD eNB Installation Guide* on the website. If you will be setting up the Nova-436 for dual carrier (split mode) operation, please also refer to the *BaiCells Dual Carrier Configuration Quick Guide*.

Check and Prepare

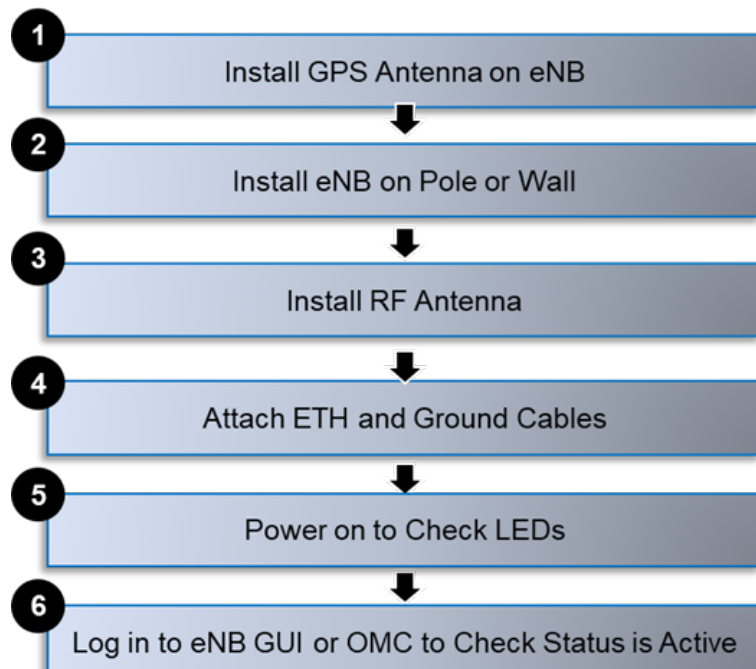
- 1 Nova-436 eNodeB unit
- 1 90V to 305V AC to 48V DC power adaptor
- 1 two-wire green power terminal
- 1 American standard power plug
- 2 SFP optical modules
- 1 GPS antenna assembly kit (including fixing accessories, M4*14 screw *2, 1 GPS jumper cable)
- 1 assembled installation bracket kit (assembled: 1 bracket, omega*4, M10*160 outer hex bolt *4, M10 flat gasket*4, M10 spring gasket*4, M10 nut*4; individual: M10 flat gasket*6, M10 spring gasket*6, M10 nut*6, M8*80 expansion bolt *2)
- 6 cold shrink tubes
- 2 ground terminals

| Item | Description |
|------------------|--|
| Power cable | < AWG16, e.g., AWG14 |
| RF antenna cable | 50 ohm feeder |
| RF antenna* | Omni or directional |
| Optical fiber | Single mode optical fiber |
| Ethernet cable | Outdoor CAT6 Shorter than 330 feet (100 meters) |
| Ground cable | 16mm ² diameter yellow-green wire |

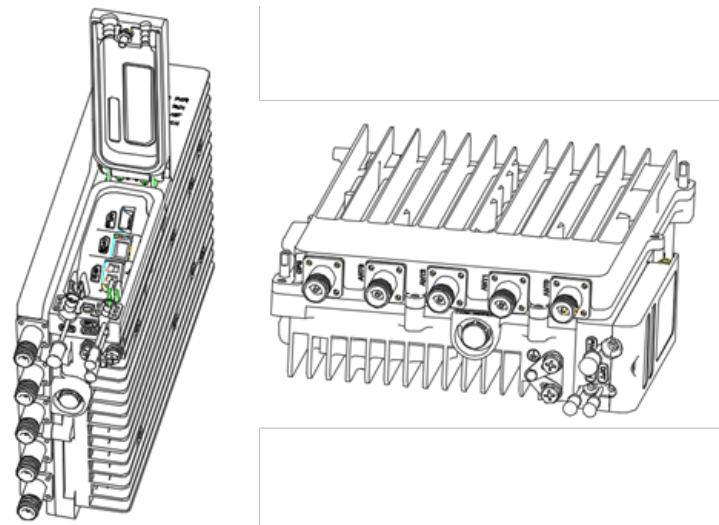
*When the eNB is operating in dual carrier mode, Cell 1 uses ANT2 and ANT3 and Cell 2 uses ANT0 and ANT1.

| | | | | |
|----------------------------------|-------------------|---------------------|----------------------|--------------|
| | | | | |
| Level bar | Marking pen | Knife | Pliers | Wrench |
| | | | | |
| Percussion drill and drill heads | Hammer | Cross screw driver | Cable vice (crimper) | Tape measure |
| | | | | |
| 5mm L-shape Allen wrench | Torx screw driver | T7 screwdriver head | Cable Stripper | |

Overview



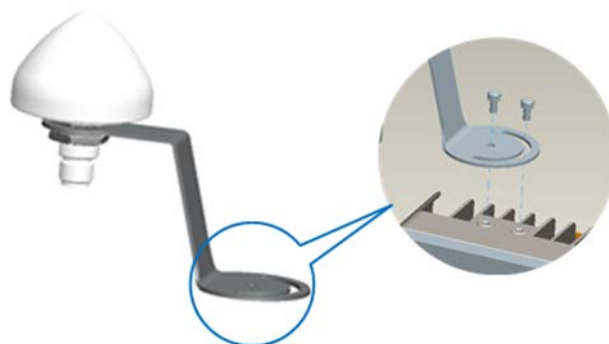
LEDs & Interfaces



| LED | Color | Status | Description |
|-----|-------|-----------------------------------|----------------------------------|
| PWR | Green | Steady on | Power is on |
| | | OFF | No power supply |
| ACT | Green | Steady on | The cell is activated |
| | | OFF | The cell is not activated |
| RUN | Green | Fast flash: 0.125s on, 0.125s off | The board is loading |
| | | Slow flash: 1s on, 1s off | The board is normal |
| | | OFF | No power input, or board fault |
| ALM | Red | Steady on | Hardware alarm, e.g., VSWR alarm |
| | | OFF | No alarm |

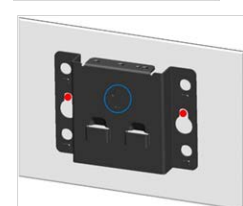
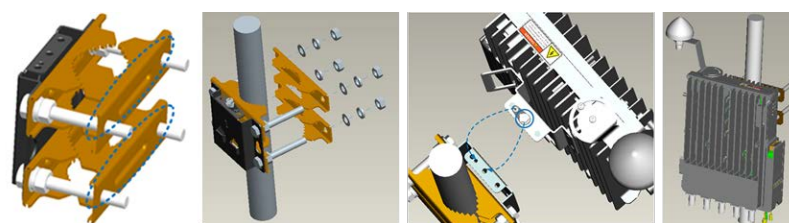
| Interface | Description |
|-----------|---|
| PWR | Power supply: -48VDC (-60V to -42V) |
| GPS | Port for optional external Global Positioning System (GPS) antenna, N-female connector |
| ANT0 | Port for external RF antenna 0, N-female connector |
| ANT1 | Port for external RF antenna 1, N-female connector |
| ANT2 | Port for external RF antenna 2, N-female connector |
| ANT3 | Port for external RF antenna 3, N-female connector |
| OPT | Optical backhaul interface for connecting to external transmission network and used for data backhaul |
| ETH | RJ-45 interface, used for debugging or data backhaul |

Install GPS Antenna



Install eNB on Pole or Wall

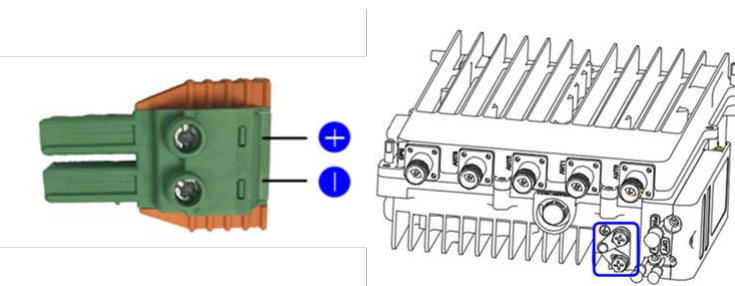
Pole diameter: 1.6 to 3.9 inches (40 to 100 mm)



Connect GPS, RF, Optical Fiber, & Ethernet Cables

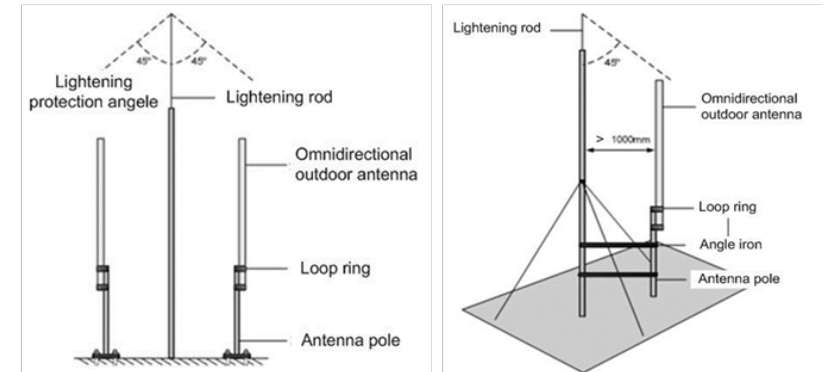
Open eNB wiring cavity; use cold shrink tubes

Connect Power & Grounding

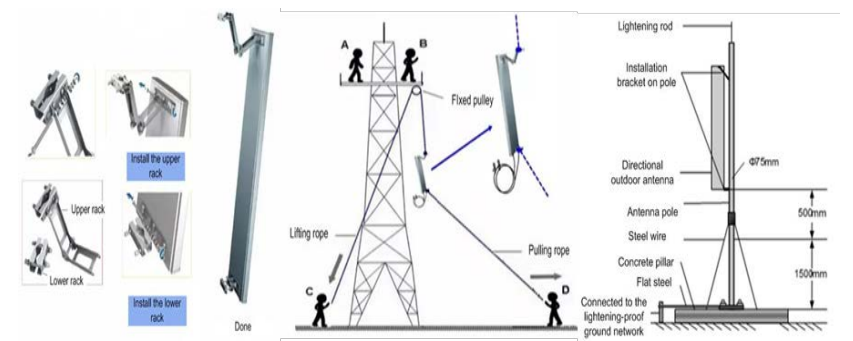


Install

Omni



Directional



Power On & Check LEDs

| | |
|-------|---------|
| ○ ALM | Alarm |
| ○ ACT | Active |
| ○ RUN | Running |
| ○ PWR | Power |

Check eNB Status in Software

Base Station GUI login - <http://192.168.150.1> (admin/admin), **BTS Info > Status Info > Cell Status = Active**

OMC login - <https://cloudcore.cloudapp.net/cloudcore/> (your email address/your password), **eNB > Monitor > Active Status**

NOTE: Please refer to the *BaiCells Dual Carrier Configuration Quick Guide* for configuration differences when planning to operate the Nova-436 eNB in dual carrier (split sector) mode.

| China | North America |
|--|---|
| Address: 3F, Bldg. A, No. 1 Kai Tuo Rd, Haidian Dist, Beijing, China | Address: 555 Republic Dr., #200, Plano, TX 75074, USA |
| Phone: +86-10-62607100 | Phone: +1-888-502-5585 |
| E-mail: contact@Baicells.com | Email: sales_na@Baicells.com or support_na@Baicells.com |
| Website: www.Baicells.com | Website: https://na.Baicells.com |

Free Manuals Download Website

<http://myh66.com>

<http://usermanuals.us>

<http://www.somanuals.com>

<http://www.4manuals.cc>

<http://www.manual-lib.com>

<http://www.404manual.com>

<http://www.luxmanual.com>

<http://aubethermostatmanual.com>

Golf course search by state

<http://golfingnear.com>

Email search by domain

<http://emailbydomain.com>

Auto manuals search

<http://auto.somanuals.com>

TV manuals search

<http://tv.somanuals.com>