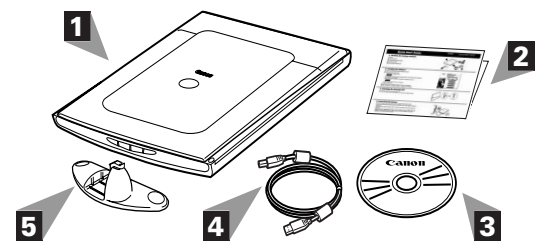


1. Checking the Package Contents

- 1 Scanner
- 2 Quick Start Guide
- 3 CanoScan Setup Utility CD-ROM
- 4 USB Interface Cable
- 5 Stand (CanoScan LiDE 60 only)



2. Installing the Software

- 1 Place the CanoScan Setup Utility CD-ROM in the drive.

Windows

The CanoScan Setup Utility main menu will display.
When auto start setting fails to work:

- 1 For Windows XP, click [Start] menu and then [My computer]. For other Windows systems, double-click [My Computer] icon on the desktop.
- 2 Double-click [CanoScan] CD-ROM icon and [Setup] icon to display the main menu.

Macintosh

- 1 Double-click [CanoScan LiDE 25] or [CanoScan LiDE 60] CD-ROM icon on the desktop.
- 2 Double-click [SetUp] icon to display the main menu.

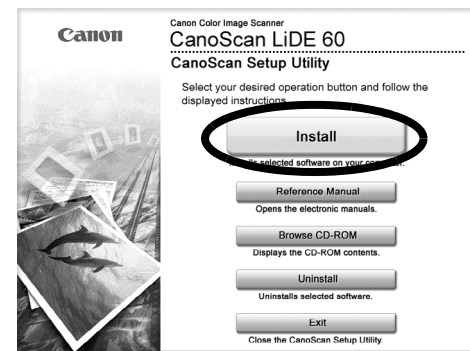
- 2 Click [Install] on the main menu.

"Install" window will display.

- 3 Click [Install] on the "Install" window.

- 4 Follow the on-screen message prompts to continue the installation.

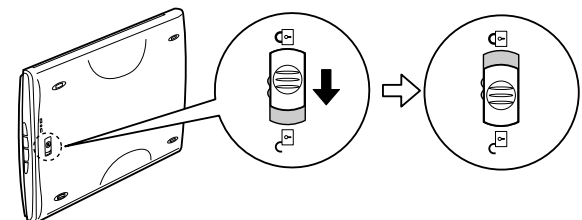
- 5 When "Installation completed successfully" displays, click [Restart].



3. Unlocking the Scanning Unit

Push the lock switch to the unlock mark (🔓).

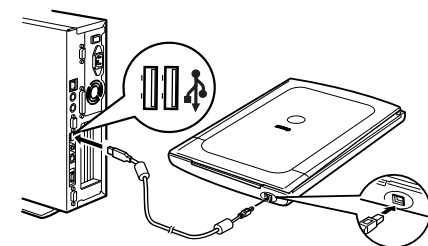
- Do not tilt the scanner more than 90 degrees from horizontal when releasing the lock.



4. Connecting the Scanner

Connect the scanner to the computer with the supplied USB interface cable.

- Only use the USB interface cable provided with the scanner. Use of other cables may lead to a malfunction.
- The scanner does not have a power switch. The power is activated as soon as the computer is turned on.
- When CanoScan LiDE 60 is connected to the USB 1.1 port on Windows XP and "HI-SPEED USB Device Plugged into non-HI-SPEED USB Hub" message appears, ignore the message. The scanner operates in this condition without problems.



5. Try Scanning

- 1 Place an item to be scanned onto the document glass.

- 2 Start ArcSoft PhotoStudio.

Windows

Select [start], [(All)Programs], [ArcSoft PhotoStudio 5.5] and [PhotoStudio 5.5].

Macintosh

Double-click [Applications] folder, [PhotoStudio] folder, and then [PhotoStudio] icon.

- 3 Click [File] menu, [Select Source] and select the scanner model.

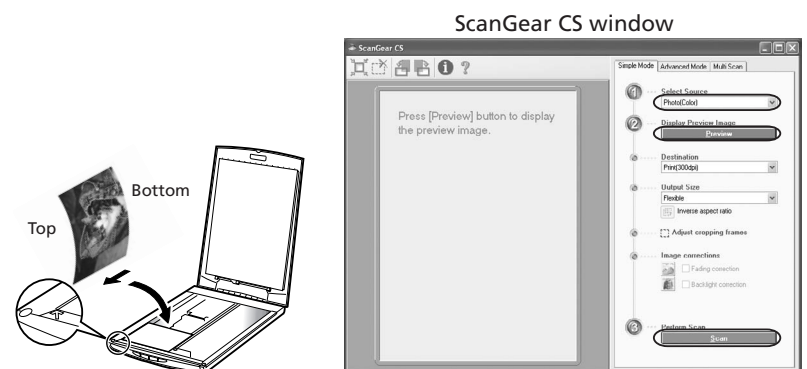
- 4 Click the acquire icon or click [File] menu and select [Acquire]. ScanGear CS will start.

- 5 Select a Select Source option and click [Preview].

- 6 Click [Scan]. The final scan will start.

- 7 Click the close box (Windows) or (Macintosh) in the ScanGear CS window, and save the scanned image in the PhotoStudio window.

For more information about ScanGear CS, click button and refer to the Scanning Guide (HTML format manual).



6. Using the Scanner Buttons



COPY Button

Prints (copies) the scanned image with a printer.



PDF Button (CanoScan LiDE 60 only)

Saves the scanned image as a PDF file.



SCAN Button

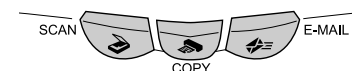
Forwards the scanned image to the image editing program, ArcSoft PhotoStudio.



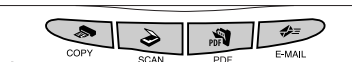
E-MAIL Button

Attaches the scanned image to a new e-mail message.

CanoScan LiDE 25



CanoScan LiDE 60

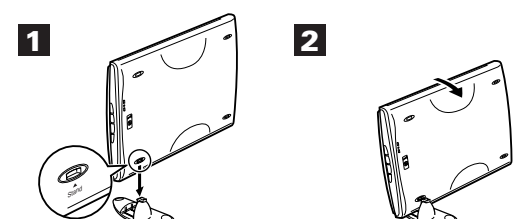


7. Setting the Stand (CanoScan LiDE 60 only)

- 1 Position the scanner directly above the stand on a slight angle.

- 2 Adjust the scanner into an upright position until the latch clicks into place.

For more information using the scanner on the stand, refer to the Scanning Guide (HTML format manual).



8. Try the Additional Features

Refer to the Scanning Guide (HTML format manual) for further information about the scanner. Double-click the Scanning Guide icon to view the manual.

To read the User's Guide for the bundled application programs (PDF format manual), select [Reference Manual] on the main menu of CanoScan Setup Utility CD-ROM.

■ Specifications

		CanoScan LiDE 25	CanoScan LiDE 60
Scanner Type		Flatbed	
Scanning Element		CIS (Color Contact Image Sensor)	
Light Source		3-color (RGB) LED	
Optical Resolution (*1)		1200 x 2400 dpi	
Selectable Resolution		25 - 19200 dpi (ScanGear CS)	
Scanning Bit Depth	Color	16 bit input/8 bit output for each color (RGB)	16 bit input/16 bit or 8 bit output for each color (RGB)
	Grayscale	16 bit input / 8 bit output	
Scanning Speed	Color	16 msec./line (600dpi), 32 msec./line (1200dpi) (*2)	6.4 msec./line (600dpi), 12.7 msec./line (1200dpi) (*3)
	Grayscale, B&W	5.3 msec./line (600dpi), 10.6 msec./line (1200dpi) (*2)	3.1 msec./line (600dpi), 4.2 msec./line (1200dpi) (*3)
Preview Speed		Approximately 16 sec. (*2,*4)	Approximately 9 sec. (*3,*4)
Interface		USB 1.1	USB 2.0 Hi-Speed/USB (USB1.1 equivalent)
Maximum Document Size		A4/Letter: 216 x 297 mm (8.5 x 11.7 in.)	
Scanner Buttons		3 buttons: COPY, SCAN, E-MAIL	4 buttons: COPY, SCAN, PDF, E-MAIL
Operating Range	Temperature	5°C to 35°C (41°F to 95°F)	
	Humidity	10% to 90% RH (without condensation formation)	
Power Requirements		Supplied via USB port (No external adapter required)	
Power Consumptions		In operation: 2.5watts maximum, Stand by: 1.4watts	In operation: 2.5watts maximum, Stand by: 1.5watts
Maximum Exterior Dimensions		256 x 383 x 34 mm (10.1 x 15.1 x 1.3 in.)	258 x 374 x 40 mm (10.2 x 14.8 x 1.6 in.)
Weight		Approximately 1.5 kg (3.3 lbs)	Approximately 1.74 kg (3.9 lbs)

*1 Optical resolution is a measure of maximum hardware sampling resolution, based on ISO 14473 standard.

*2 The fastest speed in USB 1.1 on Windows PC. Transfer time to computer is not included.

*3 The fastest speed in USB 2.0 Hi-Speed mode on Windows PC. Transfer time to computer is not included.

*4 Calibration processing time is not included.

- Note that only the initially equipped interface is supported.
- Specifications are subject to change without notice.

Model Number: F910111/F910114 (CanoScan LiDE25/LiDE60)

FCC Notice (U.S.A. Only)

Model Number : F910111/F910114

This device complies with Part 15 of the FCC Rules. Operation is subject to the following two conditions: (1) This device may not cause harmful interference, and (2) this device must accept any interference received, including interference that may cause undesired operation.

Note: This equipment has been tested and found to comply with the limits for a Class B digital device, pursuant to Part 15 of the FCC Rules. These limits are designed to provide reasonable protection against harmful interference in a residential installation. This equipment generates, uses and can radiate radio frequency energy and, if not installed and used in accordance with the instructions, may cause harmful interference to radio communications. However, there is no guarantee that interference will not occur in a particular installation. If this equipment does cause harmful interference to radio or television reception, which can be determined by turning the equipment off and on, the user is encouraged to try to correct the interference by one or more of the following measures:

- Reorient or relocate the receiving antenna.
- Increase the separation between the equipment and receiver.
- Connect the equipment into an outlet on a circuit different from that to which the receiver is connected.
- Consult the dealer or an experienced radio/TV technician for help.

Use of a shielded cable is required to comply with Class B limits in Subpart B of Part 15 of the FCC Rules.

Do not make any changes or modifications to the equipment unless otherwise specified in the manual. If such changes or modifications should be made, you could be required to stop operation of the equipment.

Canon U.S.A., Inc.
One Canon Plaza
Lake Success, NY 11042
1-516-328-5600

For Customers in Europe, Middle-East, Africa and Russia only

For Canon Customer Support contacts, please see the back cover of the European Warranty System (EWS) Booklet or visit www.canon-europe.com.

Warning

When you use this product, you should pay attention to the following legal issues:

- Scanning of certain documents, such as bank notes (bank bills), government bonds and public certificates, may be prohibited by law and may result in criminal and/or civil liability.
 - You may be required under law to obtain authorization from a person possessing copyrights or other legal rights to the item being scanned.
- If you are uncertain of the legality of scanning any particular item, you should consult your legal adviser in advance.

- Adobe® and Acrobat® are either registered trademarks or trademarks of Adobe Systems Incorporated in the U.S. and/or other countries.
- Microsoft® and Windows® are either registered trademarks or trademarks of Microsoft Corporation in the U.S. and/or other countries.
- Macintosh® and Mac® are trademarks of Apple Computer, Inc., registered in the U.S. and other countries.
- ©ArcSoft, Inc. All rights reserved for PhotoStudio.
- Other names and products not mentioned above may be registered trademarks or trademarks of their respective companies.

In this guide, Windows XP screen shots are used to illustrate explanations common to all operating systems.



Free Manuals Download Website

<http://myh66.com>

<http://usermanuals.us>

<http://www.somanuals.com>

<http://www.4manuals.cc>

<http://www.manual-lib.com>

<http://www.404manual.com>

<http://www.luxmanual.com>

<http://aubethermostatmanual.com>

Golf course search by state

<http://golfingnear.com>

Email search by domain

<http://emailbydomain.com>

Auto manuals search

<http://auto.somanuals.com>

TV manuals search

<http://tv.somanuals.com>