

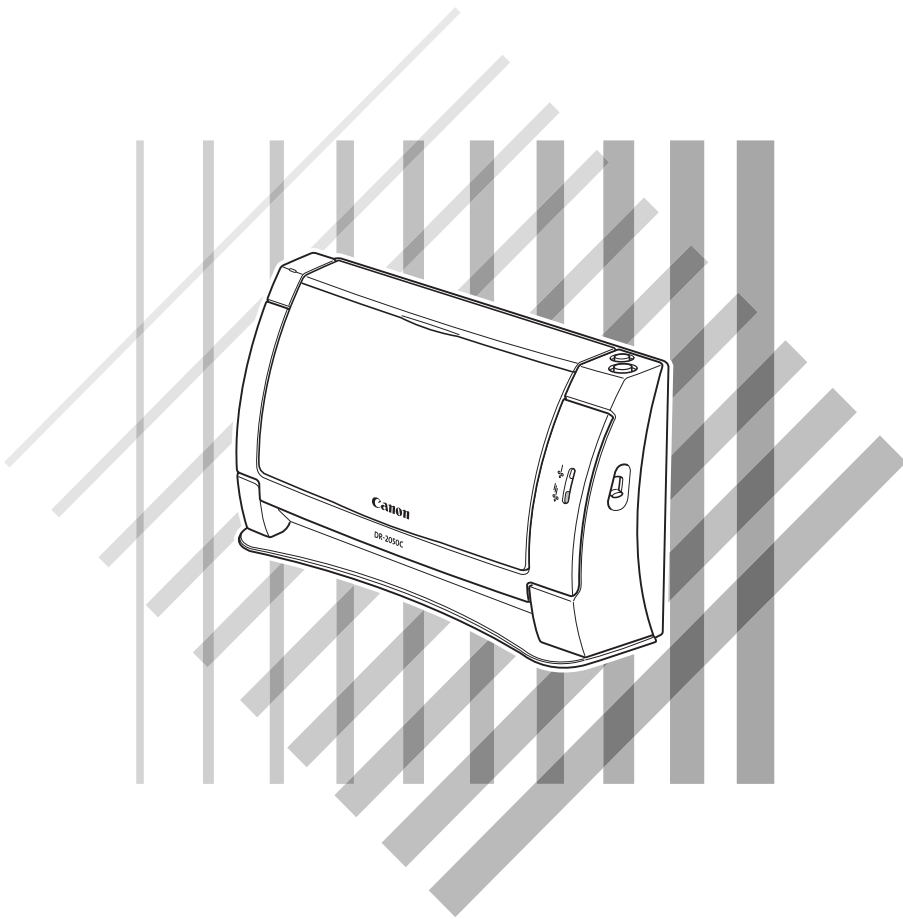
# Canon

## Document Scanner

# DR-2050C

# DR-2050SP

## User's Guide



Please read this manual before using this unit. After you finish reading this manual, keep it in a safe place for future reference.

**To customers who have purchased a Canon DR-2050SP Document Scanner:**

If you plan to use the document scanner in the Presentation mode, you should read this manual together with the *DR-2050SP User's Guide Presentation Mode Edition*.



## **FCC REGULATIONS (For 120 V model)**

Document Scanner, Model M11055, M11060

This device complies with Part 15 of the FCC Rules. Operation is subject to the following two conditions: (1) This device may not cause harmful interference, and (2) this device must accept any interference received, including interference that may cause undesired operation.

**Note:** This equipment has been tested and found to comply with the limits for a Class B digital device, pursuant to Part 15 of the FCC Rules. These limits are designed to provide reasonable protection against harmful interference in a residential installation. This equipment generates, uses, and can radiate radio frequency energy and, if not installed and used in accordance with the instructions, may cause harmful interference to radio communications. However, there is no guarantee that interference will not occur in a particular installation. If this equipment does cause harmful interference to radio or television reception, which can be determined by turning the equipment off and on, the user is encouraged to try to correct the interference by one or more of the following measures:

- Reorient or relocate the receiving antenna.
- Increase the separation between the equipment and receiver.
- Connect the equipment into an outlet on a circuit different from that to which the receiver is connected.
- Consult the dealer or an experienced radio/TV technician for help.

Use of shielded cable is required to comply with class B limits in Subpart B of Part 15 of FCC Rules.

Do not make any changes or modifications to the equipment unless otherwise specified in the manual. If such changes or modifications should be made, you could be required to stop operation of the equipment.

Canon U.S.A. Inc.

One Canon Plaza, Lake Success NY 11042, U.S.A.

Tel. No. (516)328-5000

## **RADIO INTERFERENCE REGULATIONS (For 120 V models)**

This digital apparatus does not exceed the Class B limits for radio noise emissions from digital apparatus as set out in the Interference-causing equipment standard entitled "Digital Apparatus", ICES-003 of the Industry Canada.

## **RÈGLEMENT SUR LE BROUILLAGE RADIOÉLECTRIQUE (For 120 V models)**

Cet appareil numérique respecte les limites de bruits radioélectriques applicables aux appareils numériques de Classe B prescrites dans la norme sur le matériel brouilleur: "Appareils Numériques", NMB-003 édictée par l'Industrie Canada.

## **MODEL NAMES**

Model DR-2050C is identical to model M11055.

Model DR-2050C is the sales name of model M11055.

Model DR-2050SP is identical to model M11060.

Model DR-2050SP is the sales name of model M11060.

## **READ CAREFULLY BEFORE OPENING THE SEALED DISK PACKAGE**

### **CANON SOFTWARE LICENSE AGREEMENT**

#### **IMPORTANT-READ THIS AGREEMENT BEFORE OPENING THE SEALED DISK PACKAGE! BY OPENING THE SEALED DISK PACKAGE, YOU ARE DEEMED TO AGREE TO BE BOUND BY THIS AGREEMENT.**

This legal document is a license agreement between you and Canon Electronics Inc. ("Canon"). BY OPENING THE SEALED DISK PACKAGE, YOU ARE DEEMED TO AGREE TO BE BOUND BY THE TERMS OF THIS AGREEMENT. IF YOU DO NOT AGREE TO THE TERMS OF THIS AGREEMENT, DO NOT OPEN THE SEALED DISK PACKAGE AND PROMPTLY RETURN THE CANON SCANNER, THE DISK PACKAGE CONTAINING SCANNER DRIVER SOFTWARE PROGRAMS AND/OR SCANNER UTILITY SOFTWARE PROGRAM PROPRIETARY TO CANON OR ITS LICENSOR (THE "SOFTWARE") AND THE ACCOMPANYING DOCUMENTATION AND OTHER ITEMS TO THE PLACE WHERE YOU OBTAINED THEM FOR A REFUND BEFORE THEY ARE USED OR OPENED OR UNPACKED.

In consideration of the right to use the SOFTWARE, you agree to abide by the terms and conditions of this Agreement.

**1. GRANT OF LICENSE:** Canon grants you the personal, non-exclusive right to use the SOFTWARE only on a single computer. You shall need to obtain multiple licenses separately from Canon when you shall install the SOFTWARE on multiple computers.

You shall not assign, sublicense, sell, rent, lease, loan, convey or transfer to any third party, or send or bring the SOFTWARE out of the country where you originally obtain it to other countries without required authorization of applicable governments, or copy, duplicate, translate or convert to another programming language the SOFTWARE or accompanying documentation, except as expressly provided herein.

Except as expressly permitted under the applicable law, you shall not alter, modify, disassemble, decompile or otherwise reverse engineer the SOFTWARE or accompanying documentation and you also shall not have any third party do so.

**2. BACK-UP COPY:** You may make one copy of the SOFTWARE solely for a back-up purpose or copy the SOFTWARE onto the permanent storage device (e.g. a hard disk) of your computer and retain the original for a back-up purpose. Except as expressly permitted under the applicable law, any other copying of the SOFTWARE is a violation of this Agreement. You must reproduce and include the copyright notice on the back-up copy.

**3. SUPPORT AND UPDATE:** Canon, Canon's affiliate, their distributor or dealer is not responsible for maintaining or helping you to use the SOFTWARE. No updates, fixes or support will be made available for the SOFTWARE.

**4. LIMITED WARRANTY AND DISCLAIMER OF INDEMNITY:** Canon, Canon's affiliate, their distributor or dealer will not guarantee uninterrupted service, or absence or correction of errors. Therefore, the SOFTWARE is licensed on an "AS IS" basis without warranty of any kind. The diskette on which the SOFTWARE is recorded is warranted against defective material or workmanship under normal use for a period of ninety (90) days from the date you purchased the same as evidenced by a receipt or otherwise. The limited warranty does not apply if the failure of the diskette resulted from accident, abuse or misapplication of the SOFTWARE and shall not extend to anyone other than the original user of the SOFTWARE.

CANON, CANON'S AFFILIATE, THEIR DISTRIBUTOR OR DEALER DISCLAIMS ALL IMPLIED WARRANTIES, INCLUDING ANY WARRANTY OF MERCHANTABILITY OR FITNESS FOR A PARTICULAR PURPOSE, WITH RESPECT TO THE SOFTWARE OR ACCOMPANYING DOCUMENTATION.

NEITHER CANON, CANON'S AFFILIATE, THEIR DISTRIBUTOR NOR DEALER IS LIABLE FOR ANY LOSS OR DAMAGE INCLUDING CONSEQUENTIAL OR INCIDENTAL LOSS OR DAMAGE SUCH AS LOSS OF PROFITS, EXPENSE OR INCONVENIENCE, WHATSOEVER CAUSED BY OR ARISING OUT OF THE SOFTWARE, ACCOMPANYING DOCUMENTATION OR THE USE THEREOF.

CANON, CANON'S AFFILIATE, THEIR DISTRIBUTOR OR DEALER SHALL HAVE NO OBLIGATION TO INDEMNIFY YOU AGAINST ANY CLAIM OR SUIT BROUGHT BY A THIRD PARTY ALLEGING THAT THE SOFTWARE, ACCOMPANYING DOCUMENTATION OR THE USE THEREOF INFRINGES ANY INTELLECTUAL PROPERTY OF SUCH THIRD PARTY.

THE ABOVE IS CANON'S ENTIRE LIABILITY AND YOUR EXCLUSIVE REMEDY IN CONNECTION WITH THE SOFTWARE AND ACCOMPANYING DOCUMENTATION.

**5. TERM:** This Agreement is effective upon opening the sealed disk package and remains in effect until terminated. You may terminate this Agreement by destroying the SOFTWARE and any copy thereof. This Agreement will also terminate if you fail to comply with any of the terms of this Agreement. In addition to Canon enforcing its respective legal rights, you must then promptly destroy the SOFTWARE and any copy thereof.

**6. U.S. GOVERNMENT RESTRICTED RIGHTS NOTICE:** The SOFTWARE is provided with RESTRICTED RIGHTS. Use, duplication or disclosure is subject to restrictions as set forth in either subparagraph (c) (1) (ii) of the Rights in Technical Data and Computer Software clause at DFARS 252.227-7013 or subparagraph (c) (1) and (2) of the Commercial Computer Software Restricted Rights Clause at FAR 52.227-19, as applicable.

**7. SEVERABILITY:** In the event that provision of this Agreement is declared or found to be illegal by any court or tribunal of competent jurisdiction, such provision shall be null and void with respect to the jurisdiction of that court or tribunal and all the remaining provisions of this Agreement shall remain in full force and effect.

**8. ACKNOWLEDGEMENT:** BY OPENING THE SEALED DISK PACKAGE, YOU ACKNOWLEDGE THAT YOU HAVE READ THIS AGREEMENT, UNDERSTOOD IT, AND AGREE TO BE BOUND BY ITS TERMS AND CONDITIONS. YOU ALSO AGREE THAT THIS AGREEMENT IS THE COMPLETE AND EXCLUSIVE STATEMENT OF AGREEMENT BETWEEN YOU AND CANON CONCERNING THE SUBJECT MATTER HEREOF AND SUPERSEDES ALL PROPOSALS OR PRIOR AGREEMENTS, VERBAL OR WRITTEN, AND ANY OTHER COMMUNICATIONS BETWEEN YOU AND CANON RELATING TO THE SUBJECT MATTER HEREOF. NO AMENDMENT TO THIS AGREEMENT SHALL BE EFFECTIVE UNLESS SIGNED BY A DULY AUTHORIZED REPRESENTATIVE OF CANON.

Should you have any questions concerning this Agreement, or if you desire to contact Canon for any reason, please write to Canon's local affiliate.

## International ENERGY STAR® Office Equipment Program



As an ENERGY STAR® Partner, Canon Electronics Inc. has determined that this machine meets the ENERGY STAR® Program guidelines for energy efficiency.

The International ENERGY STAR® Office Equipment Program is an international program that promotes energy saving through the use of computers and other office equipment. The program backs the development and dissemination of products with functions that effectively reduce energy consumption. It is an open system in which business proprietors can participate voluntarily. The targeted products are office equipment, such as computers, monitors, printers, fax, machine, copiers, and scanners. The standards and logos are uniform among participating nations.

### Trademarks

- Canon and the Canon logo are registered trademarks of Canon Inc. in the United States and may also be trademarks or registered trademarks in other countries.
- Microsoft and Windows are registered trademarks of Microsoft Corporation in the United States and other countries.
- ISIS is a trademark of EMC Corporation, in the United States.
- Intel and Pentium are registered trademarks of Intel Corporation.
- ENERGY STAR® is a U.S. registered mark.
- Adobe is the registered trademark of Adobe Systems Incorporated in the United States and/or other countries.
- Adaptec is registered trademark of Adaptec Inc.
- Other product and company names herein may be the trademarks of their respective owners.

### Copyright

Copyright 2006 by CANON ELECTRONICS INC. All rights reserved.

No part of this publication may be reproduced or transmitted in any form or by any means, electronic or mechanical, including photocopying and recording, or by any information storage or retrieval system without the prior written permission of CANON ELECTRONICS INC.

### Disclaimers

The information in this document is subject to change without notice.

CANON ELECTRONICS INC. MAKES NO WARRANTY OF ANY KIND WITH REGARD TO THIS MATERIAL, EITHER EXPRESS OR IMPLIED, EXCEPT AS PROVIDED HERE IN, INCLUDING WITHOUT LIMITATION, THERE OF, WARRANTIES AS TO MARKETABILITY, MERCHANTABILITY, FITNESS FOR A PARTICULAR PURPOSE OF USE OR NON-INFRINGEMENT. CANON ELECTRONICS INC. SHALL NOT BE LIABLE FOR ANY DIRECT, INCIDENTAL, OR CONSEQUENTIAL DAMAGES OF ANY NATURE, OR LOSSES OR EXPENSES RESULTING FROM THE USE OF THIS MATERIAL.



---

# INTRODUCTION

Thank you for purchasing the Canon DR-2050C/DR-2050SP Document Scanner. Please read this manual thoroughly before using the machine to familiarize yourself with its capabilities, and to make the most of its many functions. After reading this manual, store it in a safe place for future reference.

The Canon DR-2050C/DR-2050SP is a compact document scanner with automatic paper feed.

In addition to the conventional functions of a document scanner, the Canon DR-2050SP is equipped with a Presentation mode that enables the user to directly connect the scanner to a liquid crystal projector without using a computer, and project scanned images onto a screen.

## Manuals for the Scanner

---

The following manuals are provided with the Canon DR-2050C/DR-2050SP Document Scanner. Make sure to read the manuals before attempting to use the scanner. If you plan to use the DR-2050SP in Presentation mode, you should read this manual together with the *DR-2050SP User's Guide Presentation Mode Edition*.

	<b>DR-2050C</b>	<b>DR-2050SP</b>
1. DR-2050C/DR-2050SP Easy Start Guide	provided	provided
2. DR-2050C/DR-2050SP User's Guide (this manual)	provided	provided
3. DR-2050SP User's Guide Presentation Mode Edition	—	provided

The following describes the manuals packaged with the scanner. Before you start using the scanner, be sure to read this User's Guide.

### **Easy Start Guide**

This manual describes the procedure for removing the scanner from its box through to setting up the scanner for scanning.

### **User's Guide (this guide)**

This manual describes the basic operations for using the scanner, performing routine maintenance, and troubleshooting, and provides the scanner specifications.

### **DR-2050SP User's Guide Presentation Mode Edition**

This manual describes how to use the Canon DR-2050SP Document Scanner in the Presentation mode. Make sure to read this manual before attempting to use the presentation mode.

---

# Symbols Used in This Manual

---

The following symbols are used in this manual to explain procedures, restrictions, handling precautions, and instructions that should be observed for safety.



## **WARNING**

**Indicates a warning concerning operations that may lead to death or injury to persons if not performed correctly. To use the machine safely, always pay attention to these warnings.**



## **CAUTION**

**Indicates a caution concerning operations that may lead to injury to persons, or damage to property if not performed correctly. To use the machine safely, always pay attention to these cautions.**



## **IMPORTANT**

Indicates operational requirements and restrictions. Be sure to read these items carefully to operate the machine correctly, and avoid damage to the machine.



## **Note**

Indicates a clarification of an operation, or contains additional explanations for a procedure. Reading these notes is highly recommended.



---

# Contents

---

<b>INTRODUCTION .....</b>	<b>1</b>
Manuals for the Scanner .....	1
Symbols Used in This Manual .....	2
<b>Chapter 1 Before Using the Scanner .....</b>	<b>5</b>
1. Important Safety Instructions .....	6
Installation Location .....	6
Power .....	7
Moving the Scanner .....	7
Remote Control (DR-2050SP only) .....	8
Handling .....	8
Disposal .....	10
2. Features .....	11
3. Names and Functions of Parts .....	13
4. Installation Requirements .....	15
5. About the Setup Disc .....	17
<b>Chapter 2 Using the Scanner .....</b>	<b>19</b>
1. Documents .....	20
2. Preparing the Trays .....	21
Setting Up the Document Feed Tray .....	21
Using the Document Guide Adapter .....	22
Using the Feed Extension Plate .....	22
3. Placing a Documents .....	23
How to Feed with the Page Separation Mode .....	23
How to Feed with the Bypass Mode .....	26
Scanning Folio (Folded Document) .....	27
4. Scanning Documents .....	28
Using CapturePerfect 3.0 .....	28
Using the Job Function .....	34
Setting the Event Function .....	37
5. Clearing a Paper Jam .....	42
6. Scanning Hints .....	44
7. Software Settings .....	49
ISIS Driver Settings .....	50
TWAIN Driver Settings .....	52
Job Registration Tool Settings .....	54
<b>Chapter 3 Appendices .....</b>	<b>57</b>
1. Regular Maintenance .....	58
Cleaning the Scanner .....	58
Cleaning Inside the Scanner .....	58
Cleaning the Scanning Glass and the Rollers .....	59
Cleaning the Metal Rollers .....	61

---

2. Removing and Attaching the Rollers .....	62
Roller Replacement Cycle .....	62
Resetting the Counter .....	63
Removing and Attaching the Feed Roller .....	65
Removing and Attaching the Retard Roller .....	68
3. Troubleshooting .....	72
The Scanner Does Not Turn ON .....	72
The Scanner Is Not Recognized .....	72
Slow Scanning Speed .....	73
Scanning Is Not Performed .....	74
Documents Are Not Fed Correctly .....	74
Paper Is Not Ejected Correctly .....	75
Saved Image Files Do Not Open .....	75
Scanning Results Are Not as Expected .....	75
4. Uninstalling Software .....	78
Uninstalling the ISIS/TWAIN Driver/Job Registration Tool ....	80
Uninstalling CapturePerfect 3.0 .....	82
5. Specifications .....	84
Specifications .....	84
<b>Index .....</b>	<b>87</b>

# Chapter 1

---

## Before Using the Scanner

<b>1. Important Safety Instructions</b> .....	<b>6</b>
Installation Location .....	6
Power .....	7
Moving the Scanner .....	7
Remote Control (DR-2050SP only) .....	8
Handling .....	8
Disposal .....	10
<b>2. Features</b> .....	<b>11</b>
<b>3. Names and Functions of Parts</b> .....	<b>13</b>
<b>4. Installation Requirements</b> .....	<b>15</b>
<b>5. About the Setup Disc</b> .....	<b>17</b>

---

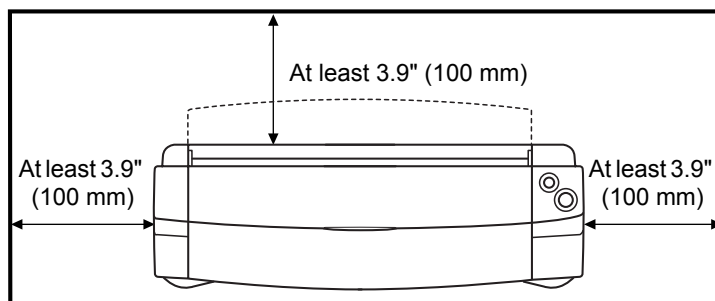
# 1. Important Safety Instructions

---

To ensure the safe operation of this scanner, be sure to read the safety warnings and precautions described below.

## Installation Location

The performance of this scanner is affected by the environment in which it is installed. Make sure that the location where the scanner is installed meets the following environmental requirements.



- Provide adequate space around the scanner for operation and maintenance, and for ventilation.
- Provide adequate space behind the scanner in order to eject scanned documents to the front of the scanner.
- Avoid installing the machine in direct sunlight. If this is unavoidable, use curtains to shade the scanner.
- Avoid locations where a considerable amount of dust accumulates.
- Avoid warm or humid locations, such as in the vicinity of a water faucet, water heater, or humidifier, and avoid locations where the fumes from ammonia, paint thinner, or other volatile chemicals may be present.
- Avoid locations where ammonia gas is emitted.
- Avoid locations near volatile or flammable materials, such as alcohol or paint thinner.
- Avoid locations that are subject to vibration.
- Avoid exposing the scanner to rapid changes in temperature. If the room in which the scanner is installed is cold but rapidly heated, water droplets (condensation) may form inside the scanner. This may result in a noticeable degradation in scanning quality.

The following conditions are recommended for optimal scanning quality:

Room temperature: 10 °C to 32.5 °C (50 °F to 90.5 °F)

Humidity: 20% to 80% RH

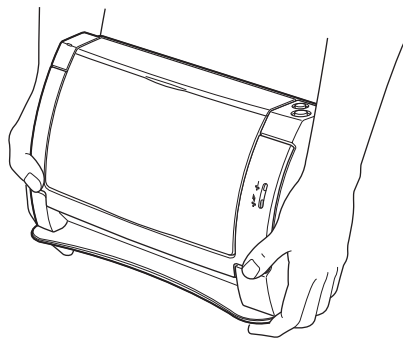
- Avoid installing the scanner near equipment that generates a magnetic field (e.g. speakers, televisions, or radios).

## Power

- Connect only to a power outlet of the rated voltage and power supply frequency. (either 120 V, 60 Hz or 220-240 V, 50/60 Hz depending on your region)
- Do not connect other electrical equipment to the same power outlet to which the scanner is connected. Also, when using an extension cord, make sure that the extension cord is rated for the current requirements of the scanner.
- Never try to disassemble the AC adapter or modify it in any way, as this is extremely dangerous.
- The power cord and AC adapter may become damaged if they are often stepped on or if heavy objects are placed on them. Continued use of a damaged power cord and AC adapter can lead to an accident, such as a fire or electrical shock.
- Do not use the power cord while it is coiled.
- Do not pull directly on the power cord. When disconnecting the power cord, grasp the plug and remove it from the outlet.
- Keep the area around the power plug clear of objects so that the power cord can be disconnected easily in an emergency.
- Use only the AC adapter provided with this scanner. Also, do not use the AC adapter provided with the scanner with any other electrical devices.  
Model: MG1-3607
- If you have any questions regarding the power supply, contact your local authorized Canon dealer or service representative for further information.

## Moving the Scanner

- When moving the scanner, always hold it with both hands to avoid dropping it. The scanner weighs approximately 5.5 lb (2.5 kg).



- Before moving the scanner, make sure to disconnect the interface cables and AC adapter. If the scanner is transported with these items connected, the plugs and connectors may be damaged due to excessive force applied to them during movement.

---

## Remote Control (DR-2050SP only)

- Do not leave the remote control on the floor, as damage may result if it is stepped on.
- Do not disassemble the remote control.
- Take care not to misplace the remote control.
- Do not drop or cause physical shock to the remote control.
- Do not use any remote control other than the one provided with the scanner. Also, do not use the remote control with any other product.
- Remove the batteries from the remote control when it is not in use for extended periods of time.
- When replacing the remote control batteries, replace both batteries together.
- Insert the positive (+) and negative (-) poles of the batteries correctly.
- Do not combine old and new batteries, or batteries of different types.
- Do not use Ni-Cd or Ni-MH batteries.
- Make sure to comply with local regulations when disposing of batteries used for the remote control.

## Handling



### **WARNING**

**Note the following precautions whenever using the scanner.**

**Failure to do so may result in a fire or electric shock.**

- **Never use alcohol, benzene, paint thinner, aerosol sprays, or any other highly flammable substance near the scanner.**
- **Do not cut, damage, or modify the power cord or AC adapter. Do not place heavy objects on the power cord or AC adapter, and do not pull or excessively bend the power cord.**
- **Never connect the power cord when your hands are wet.**
- **Do not connect the scanner to a multi plug power strip.**
- **Do not knot or coil the power cord as this may result in a fire or electric shock. When connecting the power cord, make sure that the power plug is securely and completely inserted into the power outlet.**
- **Do not use power cords and AC adapters other than the power cord and AC adapter provided with this scanner.**
- **Never try to take the scanner apart or modify it in any way.**
- **Never try to take the AC adapter apart or modify it in any way, as this is dangerous and may lead to a fire or electric shock.**
- **Do not use flammable aerosol sprays products near the scanner.**
- **When cleaning the scanner, turn the power switch OFF and disconnect the power cord from the power supply.**
- **Clean the scanner using a slightly dampened cloth which has been well wrung out. Never use alcohol, benzene, paint thinner, or any other flammable substances.**

- 
- If the scanner makes strange noises, or gives off, smoke, heat, or strange odors, or the scanner does not function or other abnormalities occur when you use the machine, immediately turn the power switch OFF, and disconnect the power plug from the power outlet. Then, contact your local authorized Canon dealer or the service representative for further information.
  - Do not drop the scanner, or subject it to impact or strong shock. Should the scanner ever become damaged, immediately turn the power switch OFF, and disconnect the power plug from the power outlet. Then, contact your local authorized Canon dealer or service representative to have the unit serviced.
  - Before moving the scanner, be sure to turn the power switch OFF, and disconnect the power plug from the power outlet.

**CAUTION**

- Do not install the scanner on a surface that is unstable or tilted, or in an area subject to excessive vibrations, as this may cause the scanner to fall, resulting in personal injury or damage to the scanner.
- Do not block the ventilation openings. Doing so could cause the scanner to overheat, creating a risk of fire.
- Never place small metal objects such as staples, paper clips, or jewelry on the scanner. These items may fall into the scanner, and cause a fire or electric shock. Should such objects ever fall inside the scanner, immediately turn the power switch OFF, and disconnect the power plug from the power outlet. Then, contact your local authorized Canon dealer or service representative to have the unit serviced.
- Do not locate the scanner in a humid or dusty location. Doing so might cause fire or electric shock.
- Do not place objects on top of the scanner. Such objects may tip or fall over, resulting in personal injury.
- To prevent any risk of fire or electric shock, make sure that the power source meets the power requirements of the unit.
- When unplugging the power cord, grasp it firmly by its plug. Do not pull directly on the power cord, as this may damage or expose the cord's internal wiring, resulting in a fire or electric shock.
- Leave sufficient space around the power plug so that it can be unplugged easily. If objects are placed around the power plug, you will be unable to unplug it in an emergency.
- Do not allow water or flammable substances (alcohol, paint thinner, benzene, etc.) to spill into the scanner, as this may result in a fire or electric shock.

- 
- **Turn OFF the power switch for safety when not using the scanner for a long period of time, such as overnight. Also, turn OFF the power switch, and disconnect the AC adapter from the scanner and disconnect the power cord from the power outlet for safety when the machine will not be used for an extended period of time, such as during consecutive holidays.**
  - **Do not wear loose clothing or jewelry that may get caught in the scanner while you are using it. This may result in personal injury. Be extra careful of neckties and long hair. If anything becomes caught in the scanner, immediately disconnect the power cord to stop the scanner.**

## **Disposal**

- When disposing of this scanner, be sure to follow all local ordinances and laws or consult with the retailer who sold you the scanner.
- If you are using the DR-2050SP, make sure to comply with local regulations when disposing of batteries used for the remote control.



---

## 2. Features

---

The main features of the DR-2050C/DR-2050SP document scanner are described below.

### ■ Compact Configuration

The scanner has a very compact configuration, measuring only 11.7" (298 mm) (W) × 7.7" (197 mm) (H) × 3.9" (100 mm) (D). The small footprint of this standup vertical scanner saves space.

### ■ Fast Document Feeding

The scanner can scan a maximum of 20 documents per minute in a range of sizes from business cards to LTR/A4 size. (Scanning conditions: Black and white, LTR/A4 size portrait, two sided, 200 dpi.)

### ■ USB 2.0 Interface

Connect the scanner to a computer with Hi-Speed USB 2.0 protocol.

### ■ Color/Grayscale Support

Documents can be scanned in 24-bit color or 256-level grayscale.

### ■ Supports a Variety of Scanning Modes

The scanner supports the following scanning modes, depending on the document type:

- Single-sided/double-sided mode
- Single sheet/dual feeding path

### ■ Paper Size Detection

The size of scanned documents is automatically detected, and images of non-standard size documents are saved with the unwanted margin around the document removed.

### ■ Folio Scan

A folio (folded in half) document can be set for scanning as it is, and the scanned images of both sides are combined as a single image. (See p. 27.)

### ■ Deskew

If a document is fed through the scanner as crooked, the scanned image is corrected so that it is aligned as straight.

### ■ Text enhancement mode

The "Text Enhanced" mode is used to make text easier to read if the background of the document is dark or the text is written lightly in pencil. The "Advanced Text Enhancement II" mode is used to make text easier to read if the background and text are similar colors or both light colors.

\* May not function well depending on the document.

### ■ Dropout Color

The scanner is equipped with a Dropout Color function that allows you to specify a color for the scanner to omit from scanned images.

---

### ■ Skip Blank Page Function

The scanner is equipped with a Skip Blank Page function that allows it to scan a document regardless of whether every document is double-sided or single-sided.

### ■ Prescan Function

The scanner is equipped with a Prescan function that allows you to adjust the contrast and brightness of a prescanned image and then send the adjusted image to the application software, without needing to scan the document again.

### ■ Auto Start

The scanner is equipped with an Auto Start function that automatically initiates scanning when a document is placed in the document feed tray.

### ■ Compatible with Carbonless Duplicating Paper

The scanner is able to scan carbonless duplicating paper.

### ■ Energy Saving Mode

This scanner is compatible with the International Energy Star Program, and is designed to save power by using the energy saving feature except when scanning is being performed.

### ■ Presentation mode (DR-2050SP only)

The scanner can project scanned images onto a screen from a projector directly connected to the scanner without using a computer. For more details see the *DR-2050SP User's Guide Presentation Mode Edition*.



### Note

Certain functions may not be available depending on the software you are using.

### 3. Names and Functions of Parts

This section describes the name and function of each part. Make sure to read this section and familiarize yourself with the parts of the scanner before using the scanner. For part names and their functions of the DR-2050SP, see the *DR-2050SP User's Guide Presentation Mode Edition*.

#### ■ Front/Right Side

##### Upper Cover

Open when you need to set a document in the scanner.

##### Power Indicator

Lights green when the scanner is turned ON.

##### Document Feed Tray

Open this tray to place your documents into the feeder. (See p. 21.)

##### Document Eject Opening

Scanned documents are output to the document eject opening.

##### Feed Selection Lever

Use it to set the way the documents are fed. To feed a multi-page document one page at a time, lower the lever (Page Separation mode). To feed bound documents, such as invoices, without separating them, raise the lever (Bypass mode).

##### Stop Button

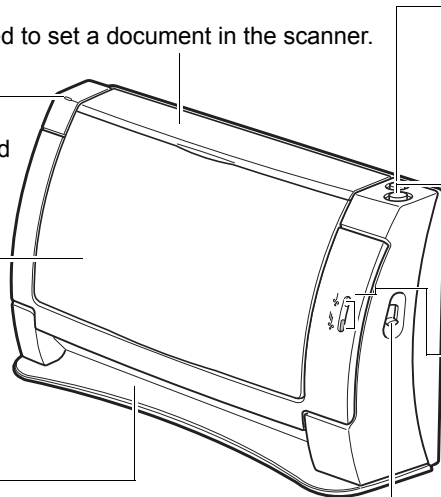
Press to cancel document scanning. (Feed Mode: Panel + Auto)

##### Scan Button

Press to start document scanning.

##### Feed Indicator

Indicates the Feed Selection Lever position.



#### ■ Front (Upper Cover and Document Feed Tray open)

##### Feed Extension Plate

Pull out this plate if documents tend to fall forward.

##### Front Unit

Open when clearing a paper jam or cleaning inside.

##### OPEN Knob

Use this knob to open the front unit.

##### Document Guide Adapter

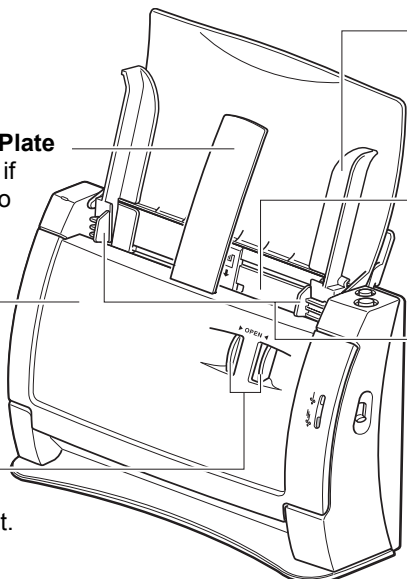
When documents are skewed, insert the adapter into the document guide.

##### Document Feed Opening

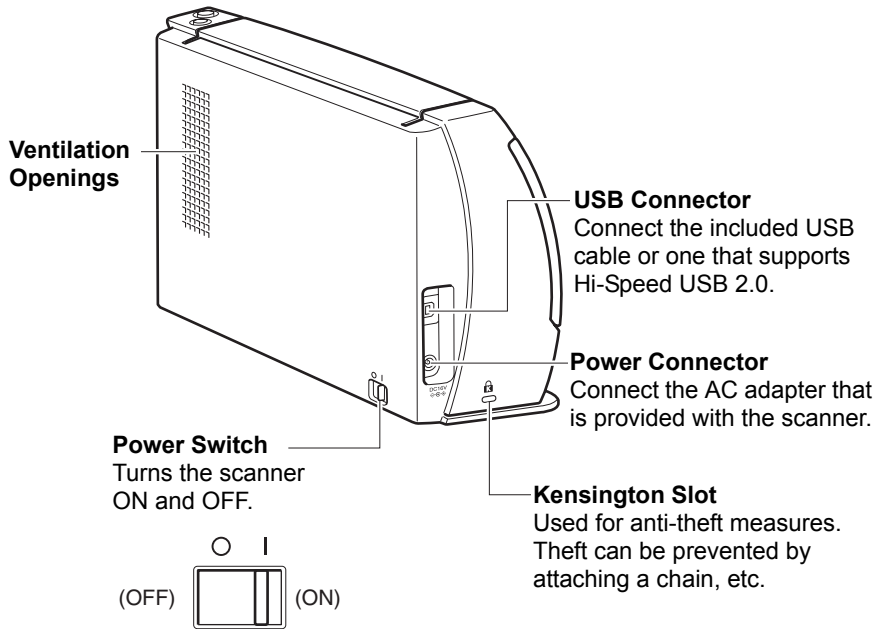
Place the document to be scanned here.

##### Document Guide

Adjust them to align with the width of the document.

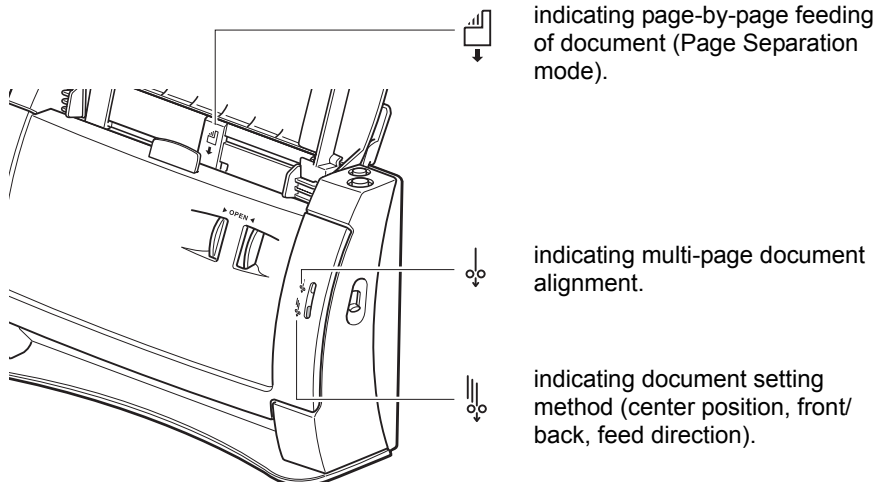


## ■ Back/Left Side



**⚠ CAUTION**  
Make sure that ventilation openings are not blocked. Blocked openings can cause internal heat build up, creating the risk of fire.

## ■ Conventions



---

## 4. Installation Requirements

---

To use the DR-2050C/DR-2050SP, your computer must satisfy the following system requirements.

- One of the following operating systems:
  - Microsoft Windows 98SE
  - Microsoft Windows Me
  - Microsoft Windows 2000 Professional SP4 or later
  - Microsoft Windows XP Professional SP2 or later
  - Microsoft Windows XP Home Edition SP2 or later
- Microsoft Windows XP Professional x64 Edition
- Microsoft Windows Vista Home Basic
- Microsoft Windows Vista Home Premium
- Microsoft Windows Vista Business
- Microsoft Windows Vista Ultimate
- Microsoft Windows Vista Enterprise
- A computer that meets the following specifications:
  - CPU: Intel Celeron 733 MHz or faster
  - Memory: 256 MB or more
  - Hard disk: 512 MB or more available space
  - CD-ROM drive
  - Hi-Speed USB 2.0 interface
  - Monitor: Resolution of 1024 × 768 (XGA) or better recommended.
- USB interface connections vary according to the operating system as shown below.
  - Windows 98SE/ME: USB Full-Speed (equal to USB 1.1)
  - Windows 2000/XP: Hi-Speed USB 2.0/USB Full-Speed (equal to USB 1.1)
  - Windows Vista: Hi-Speed USB 2.0
- An ISIS-compatible application or a TWAIN-compatible application that is compatible with the above operating systems.



### IMPORTANT

- If you do not know the requirements for your computer system, contact the store where you purchased the computer or the manufacturer of the computer for more information.
- Use the most recent version of the USB 2.0 driver provided by Microsoft. Contact your local authorized Canon dealer or service representative for more detailed information.
- Not all USB interfaces provided as standard with personal computers are guaranteed. Contact your local authorized Canon dealer for more detailed information.

- 
- Scanning speeds are lower if your computer's standard USB interface is USB Full-Speed (equal to USB 1.1).
  - Use the USB cable provided with the scanner, or a Hi-Speed USB 2.0 compatible cable.
  - If the CPU, memory, interface card, and other specifications do not satisfy the installation requirements, the scanning speed may be greatly reduced and transmission may take a long time.
  - Even if the computer satisfies the recommended specifications, the scanning speed may vary, depending on the scan settings.
  - The ISIS/TWAIN Drivers provided with the scanner do not necessarily operate on all ISIS- or TWAIN-compatible applications. For details, contact your application software retailer.

## 5. About the Setup Disc

The Canon DR-2050 series scanner setup disc contains the software listed below:

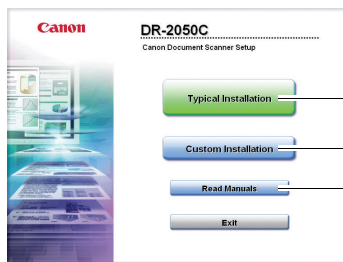
- **DR-2050C Driver**  
Scanner driver for use with the DR-2050C/DR-2050SP scanner, and the Job Registration Tool.
- **CapturePerfect 3.0**  
ISIS-compatible application developed for Canon document scanners.



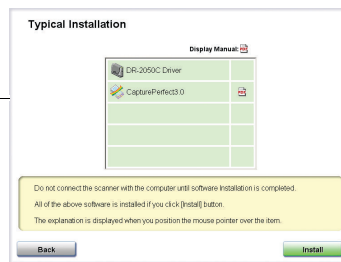
### Note

The following shows how the DR-2050 series setup disc is configured. For instructions on how to install the software included on the setup disc, see the Easy Start Guide.

#### Menu screen

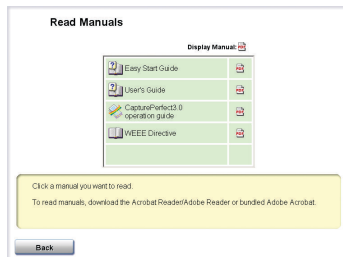


#### Typical Installation



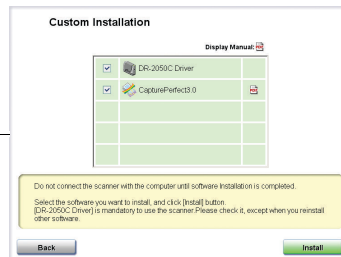
\* All of the indicated software is installed.

#### Read the manual



\* The "Easy Start Guide", "User's Guide" and "CapturePerfect 3.0 Operation Guide" provided with the scanner.

#### Custom Installation



\* Only the software selected in the checkboxes is installed.





# Chapter 2

---

## Using the Scanner

<b>1. Documents</b>	<b>20</b>
<b>2. Preparing the Trays</b>	<b>21</b>
Setting Up the Document Feed Tray	21
Using the Document Guide Adapter	22
Using the Feed Extension Plate	22
<b>3. Placing a Documents</b>	<b>23</b>
How to Feed with the Page Separation Mode	23
How to Feed with the Bypass Mode	26
Scanning Folio (Folded Document)	27
<b>4. Scanning Documents</b>	<b>28</b>
Using CapturePerfect 3.0	28
Using the Job Function	34
Setting the Event Function	37
<b>5. Clearing a Paper Jam</b>	<b>42</b>
<b>6. Scanning Hints</b>	<b>44</b>
<b>7. Software Settings</b>	<b>49</b>
ISIS Driver Settings	50
TWAIN Driver Settings	52
Job Registration Tool Settings	54

---

# 1. Documents

---

This scanner can scan documents ranging in size from business cards and checks to LTR/A4 size documents. The size of documents that can be scanned is shown below.

**For Page Separation mode (continuous feed) (See “How to Feed with the Page Separation Mode,” on p. 23.)**

Width: 2.16" to 8.5" (55 mm to 216 mm)  
Length: 2.75" to 11.6" (70 mm to 297 mm)  
Weight: 14 to 32 lb bond (52 to 128 g/m<sup>2</sup>)  
0.0024" to 0.0059" (0.06 mm to 0.15 mm)

**For Bypass mode (single-sheet feed) (See “How to Feed with the Bypass Mode,” on p. 26.)**

Width: 2.16" to 8.5" (55 mm to 216 mm)  
Length: 2.75" to 13.9" (70 mm to 355 mm)  
Weight: 11 to 40 lb bond (42 to 157 g/m<sup>2</sup>)  
0.0020" to 0.0079" (0.05 mm to 0.20 mm)



## IMPORTANT

A document must meet the following criteria to be scannable:

- When scanning a multipage document, pages must be grouped together so that they have the same size, thickness, and weight. Scanning different types of paper at one time can cause the scanner to jam.
- Always make sure that the ink on a document is dry before scanning it. Scanning documents with the ink still wet may soil the rollers or scanning glass, cause lines or smudges to appear on images, or dirty other documents.
- Always clean the rollers or scanning glass after scanning a document written in pencil. Scanning documents with pencil written on them may soil the rollers or scanning glass, cause stripes to appear in images, or dirty other documents.
- When scanning a two-sided document that is printed on thin paper, the image on the opposite side of each page may show through. Adjust the brightness in the scanning conditions before scanning the document.
- Scanning the following types of documents can cause a paper jam or malfunction. To scan such a document, make a photocopy of the document and then scan the photocopy.



Wrinkled or creased documents



Extremely thin, translucent paper



Paper with square holes



Curled paper



Carbon paper



Documents with paper clips or staples



Torn documents



Coated paper

---

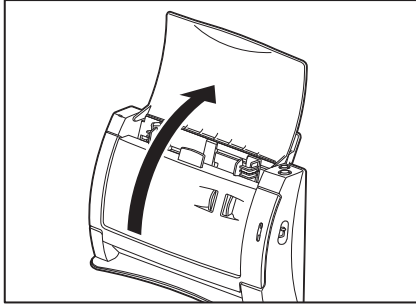
## 2. Preparing the Trays

---

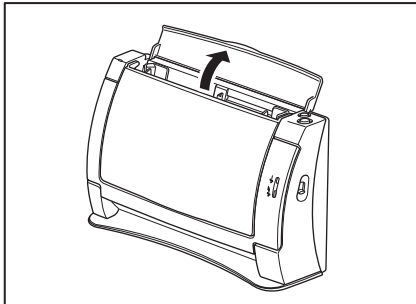
Prepare the document feed tray in accordance with the document size and type.

### Setting Up the Document Feed Tray

Pull the document feed tray towards you to open it.



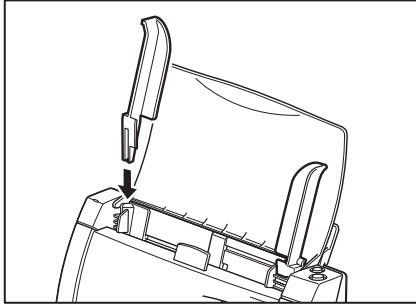
In the case of a short document, open the upper cover.



---

## Using the Document Guide Adapter

When a document becomes skewed during scanning or when scanning a document that is folded in half (See p. 27.), install the document guide adapter to keep the document from becoming skewed. Install the document guide adapter by positioning it as shown in the illustration. Insert the legs of the document guide adapter as far as they go into the document guide.



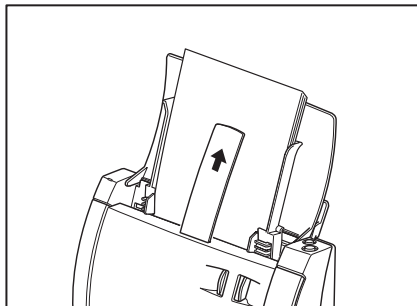
### Note

If document skew is not remedied by installing the document guide adapter, set deskew to on in the ISIS/TWAIN driver settings. (See p. 49.)

## Using the Feed Extension Plate

Under the following conditions, install the document guide adapter, set the document in the scanner, and then pull out the feed extension Plate.

- When the document falls forward
- When the document tends to bend forward because the paper is very thin, etc.



---

## 3. Placing a Documents

---

There are two methods for paper separation, called the Page Separation mode and Bypass mode for feeding documents. Feeding documents continuously from a stack of documents placed in the feed tray is called the Page Separation mode. Feeding documents one sheet at a time by hand or feeding multiple sheet documents, such as invoices that are attached at one end, is called the Bypass mode. The document feed method can be switched by moving the feed selection lever.

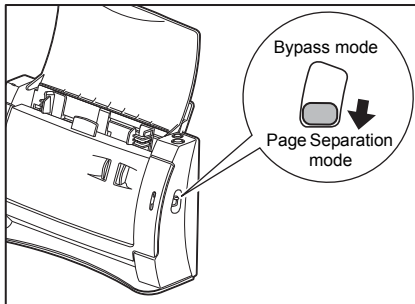


### IMPORTANT

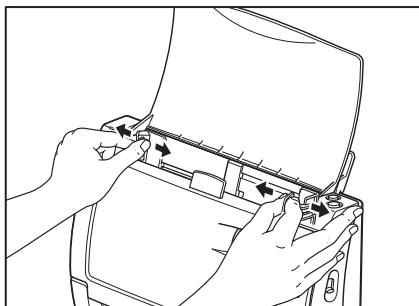
- Before you place a document, check to make sure it does not contain paper clips, staples, or other small metal objects. These objects may damage the document, or cause a paper jam or scanner malfunction.
- Do not wear loose clothing or jewelry that may get caught in the scanner while you are using it. This may result in personal injury. Be extra careful of neckties and long hair. If anything becomes caught in the scanner, immediately disconnect the power cord to stop scanning.
- Always smooth out any folds or curls in your originals before placing them into the feeder. If the leading edge of a document is curled, it may cause a paper jam.

## How to Feed with the Page Separation Mode

1. Lower the feed selection lever (Page Separation mode).

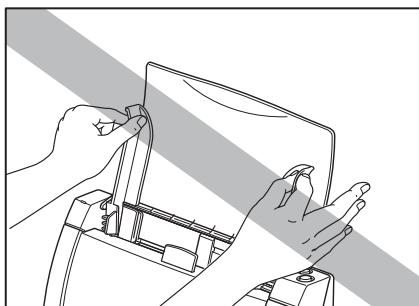


- 
2. Adjust the document guide to the width of the document being scanned.

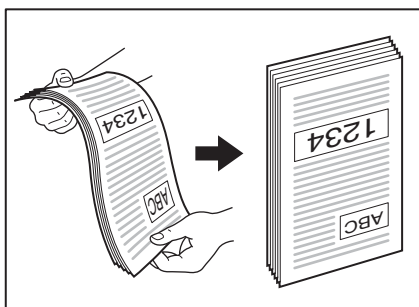


**IMPORTANT**

Do not hold the tips of the document guide adaptor when installing it. Doing so can damage the document tray.



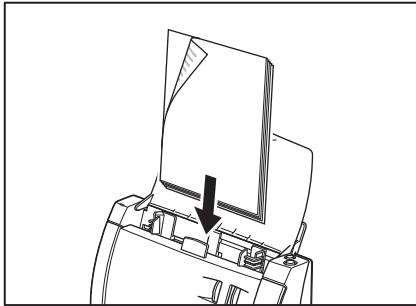
3. Fan the stack of documents to be scanned, and then angle the stack as shown in the illustration so the top edge of the first page is the lowest. (Set the document in the scanner with the top edge of the document facing downwards.)



**CAUTION**

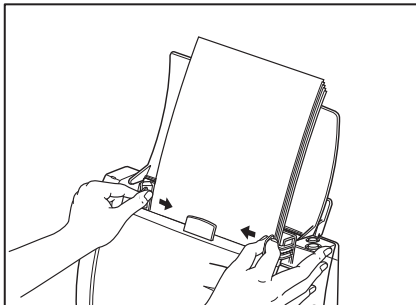
Handle the document carefully when setting it in the scanner. The edges of the paper can unexpectedly cut your hands.

4. Set the document in the scanner with the back of the document facing forward and its top edge facing downwards.

**IMPORTANT**

The document sheet capacity is 50 sheets of non-curved sheets. Note, however, that the capacity is less when document pages are not being fed correctly.

5. Adjust the document guides so they match the width of the document.

**Note**

Before scanning, make sure that the document is loaded in the scanner correctly. Scanning a curled document or a creased document can damage the document.

6. Start scanning from the application.

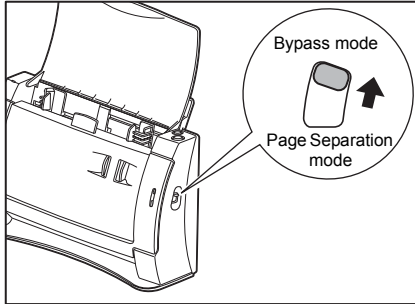
**IMPORTANT**

- If the paper feed operation stops due to a system error or a paper jam while the scanner is scanning, resolve the problem, make sure that the scanned image of the last page that was fed has been stored, and then resume the scanning operation.
- After you finish scanning, close the document feed tray and the upper cover to prevent damage to the scanner while it is not being used.

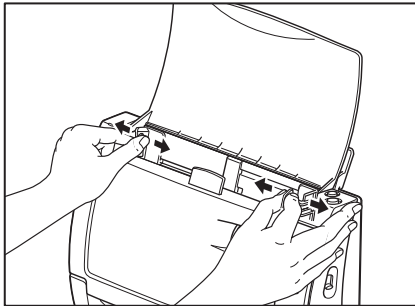
---

## How to Feed with the Bypass Mode

1. Raise the feed selection lever (Bypass mode).

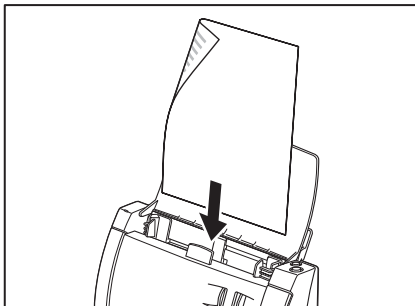


2. Adjust the document guide to the width of the document being scanned.



3. Start scanning from the application.
4. Set the document in the scanner with the back of the document facing forward and its top edge facing downwards.

The document is scanned as it is detected.



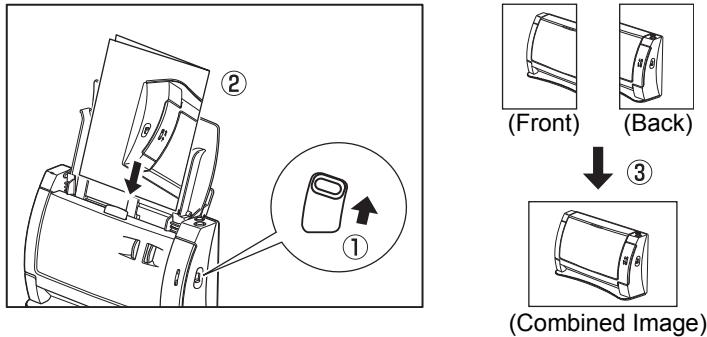
### IMPORTANT

- When scanning documents that are fastened together, such as invoices, set the edge that is fastened together as the leading edge.
- After you finish scanning, close the document feed tray and the upper cover to prevent damage to the scanner while it is not being used.



## Scanning Folio (Folded Document)

The scanner uses a folio scanning method to scan documents that are bigger than LTR/A4 size (maximum A3 size). To do folio scanning, fold the document in half and place it on the scanner. Both sides of the folded document are scanned and combined into a single image.



### Note

- When doing folio scan, put the feed selection lever up (① in the figure above) and attach the document guide adapter to keep the document straight. (See p. 22.)
- To scan a folio document, place it on the scanner with the fold on the right side (② in the figure above). The image on the front page of the folded document appears as a composite image on the right half of the page. (③ in the figure above)
- When scanning a document that is folded in half, set scanning side in the ISIS/TWAIN driver to [Folio]. (“ISIS Driver Settings ⑦,” on p. 50, “TWAIN Driver Settings ⑦,” on p. 52)
- Combined images can be a maximum of A3 size. To use folio scan to scan non-standard size documents, set “Page size” to [Auto-detection].



### IMPORTANT

- When folding documents, align the left and right edges and crease the document at the fold. The way the document is folded may cause paper jams or misaligned images.
- The part of the document at the fold is not scanned. Take care when scanning documents that have text or photos that go across the fold.
- Use manual feeding for folio scanning. Load the document one page at a time.
- Align the paper side guides to the width of the document. If the paper side guides are too wide the document may skew or images may be misaligned.
- Documents that are folded in half cannot be scanned when using the DR-2050SP in the Presentation mode.

---

## 4. Scanning Documents

---

There are two methods of scanning documents using the DR-2050C/DR-2050SP document scanner. You can scan from an application, such as CapturePerfect 3.0, or you can use the Job function, which allows you to scan by pressing the scan buttons on the operation panel, without starting up an application.

This section describes the scanning flow of the CapturePerfect 3.0 application and the Job Function.

For details on how to install each application and the driver, see the Easy Start Guide.

### Using CapturePerfect 3.0

CapturePerfect 3.0 is an ISIS-compatible application developed for Canon document scanners.

CapturePerfect 3.0 includes the following modes. Select the desired scan mode from the scan menu to perform scanning.

- **Scan Batch to File**

Documents are scanned with the preset scanning conditions, and the image file is saved to the specified folder.

- **Scan Batch to Print**

Documents are scanned with the preset scanning conditions, and the scanned image is printed on the specified printer.


- **Scan Batch to Mail**

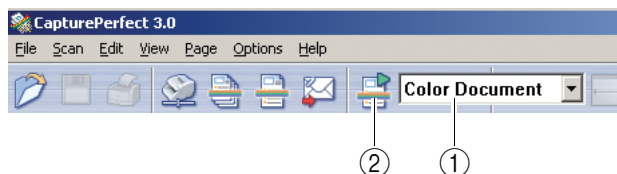
Documents are scanned with the preset scanning conditions, the e-mail software is started up, and the scanned image is attached to a new e-mail message.

- **Scan 1 Page**

One sheet of the document is scanned according to preset scanning conditions and scanning ends.

- **Scan Job**

The scanning conditions and scan mode (Scan Batch to File, Scan Batch to Print, or Scan Batch to Mail) are registered in advance as a job. The scan job can then be performed by selecting the registered job from the drop-down list (①) and pressing  (Scan JOB) on the toolbar (②).





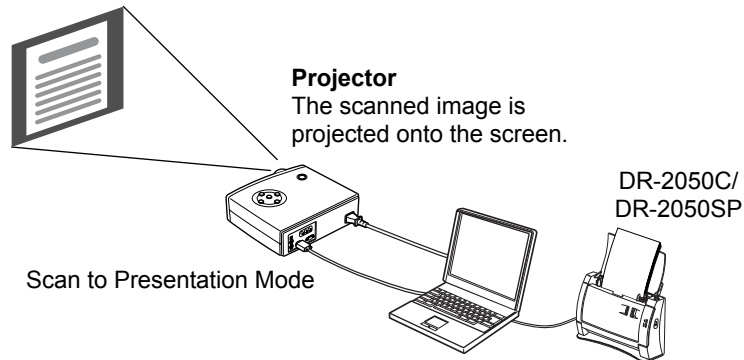
### Note

The following two jobs are already registered as scan jobs.

- **Color Document**  
Document is scanned in 24 bit color, as Simplex 300 dpi and then saved in [My Pictures] in the My Documents folder.
- **Binary Document**  
Document is scanned in black and white, as Simplex 200 dpi and then saved in [My Pictures] in the My Documents folder.

- **Scan to Presentation Mode**

This mode is handy when the scanner is used in environments, such as conference halls, where it can be connected to large displays or projectors. CapturePerfect 3.0 is switched to full-screen display, the document is scanned, and the scanned image is displayed at full size on the screen.



### Note

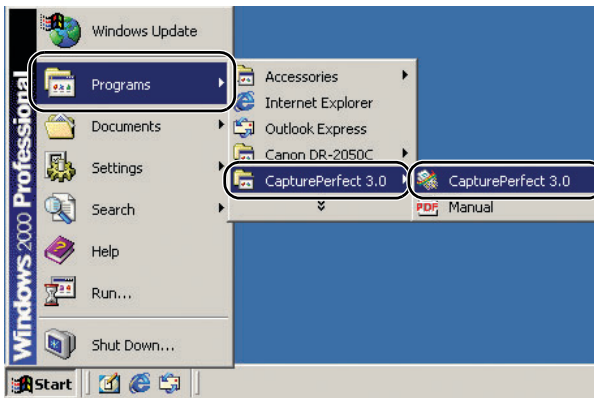
For instructions on how to use CapturePerfect 3.0, see the CapturePerfect 3.0 Operation Guide and CapturePerfect Help. Be sure to read the CapturePerfect 3.0 Operation Guide and CapturePerfect Help before you use CapturePerfect 3.0.

## CapturePerfect 3.0 Operation Procedure

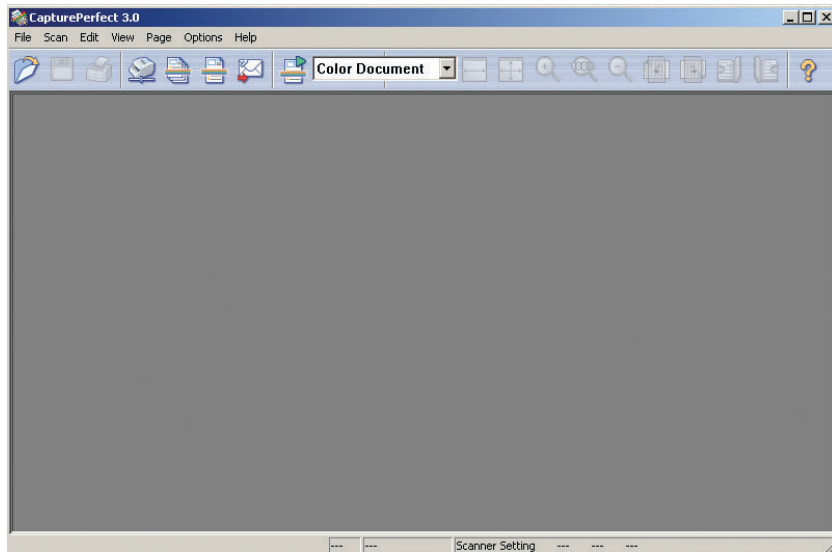
This section describes how to start up CapturePerfect 3.0, select the scanner, and the procedure up to scanning with Scan Batch to File.

For details, see the CapturePerfect Operation Guide and CapturePerfect Help.

1. Click the Windows [Start] button, and then click [Programs] ([All Programs] for Windows XP) → [CapturePerfect 3.0] → [CapturePerfect 3.0].

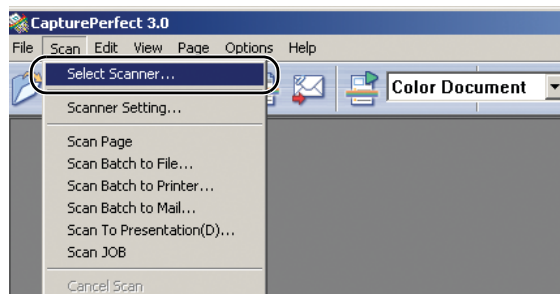


CapturePerfect 3.0 starts up.

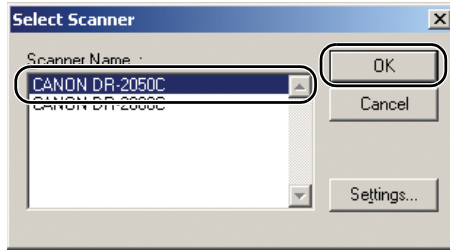


**2.** Follow the procedure below to select the Canon DR-2050C document scanner as the scanner to be used.

1. On the [Scan] menu, click [Select Scanner].



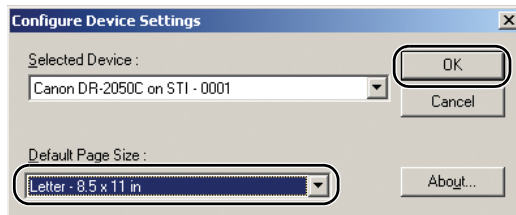
2. Select [CANON DR-2050C] → click the [OK] button.



### Note

If [CANON DR-2050C] is not displayed in the list of scanners, re-install the ISIS/TWAIN driver. (See “Step 3. Installing the Software” in the Easy Start Guide.)

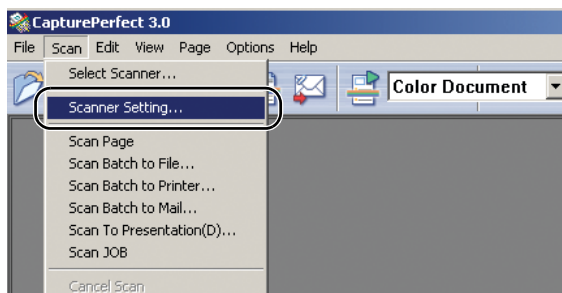
3. Set the “Default Page Size”.



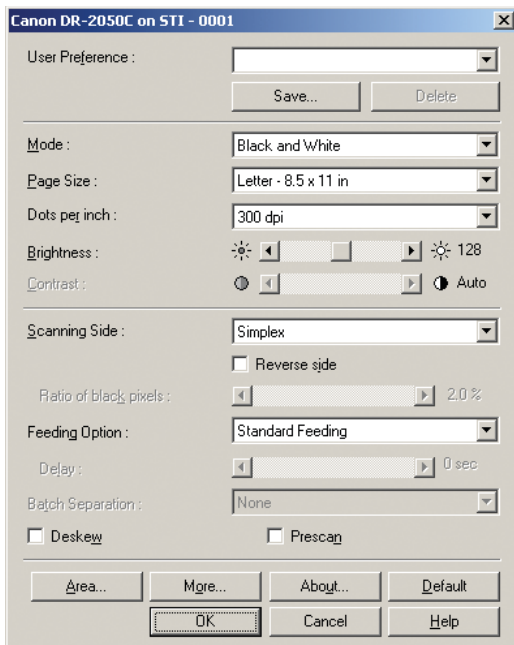
### Note

This dialog box is displayed only when you select [CANON DR-2050C] for the first time and you click the [OK] button, or when you click [Settings] on the [Select Scanner].

3. On the [Scan] menu, click [Scanner Setting].



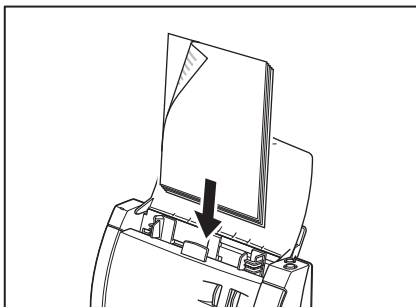
Driver basic setup dialog box opens.



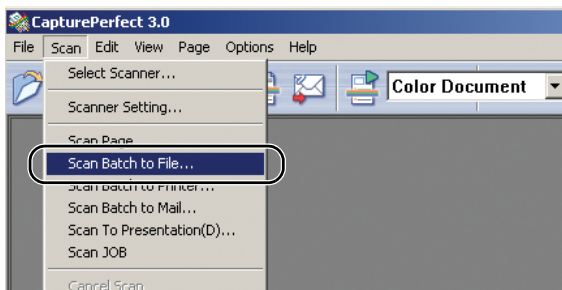
**4.** Set the scan settings.

For details setting the scanning settings, see “ISIS Driver Settings,” on p. 50, and ISIS/TWAIN Driver Help.

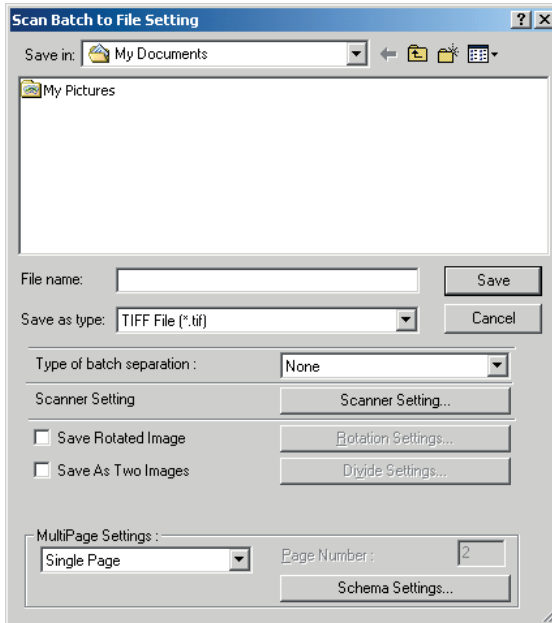
**5.** Place your document. (See “Placing a Documents,” on p. 23.)



**6.** On the [Scan] menu, select [Scan Batch to File].



The [Scan Batch to File Setting] dialog box opens.

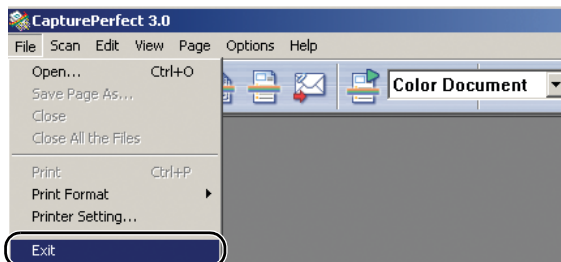


For more details on how to scan documents, see the CapturePerfect Operation Guide and CapturePerfect Help.

7. Specify the file name and the file type for saving the image data, and click [Save] to start scanning.

For details on the available settings in the [Scan Batch to File Setting] dialog box, see the CapturePerfect Operation Guide and CapturePerfect Help.

8. When there are no more document sheets to scan, scanning stops and the Continue dialog box is displayed. To continue scanning, click [Continue scanning], and to stop scanning, click [Stop scanning].
9. After scanning is complete, select [Exit] on the [File] menu to quit CapturePerfect 3.0.



---

## Using the Job Function

The job function allows you to scan merely by pressing the [Scan] button on the scanner according to the Windows event function and job tools.

Scanned image data is automatically processed by the function registered to the [Job] button by the Job Registration Tool.

Select and register one of the following four functions to the [Scan] button.

- **Save as file**

Scanning is performed according to preset scanning conditions, and image files are saved to a specified folder.

- **Print**

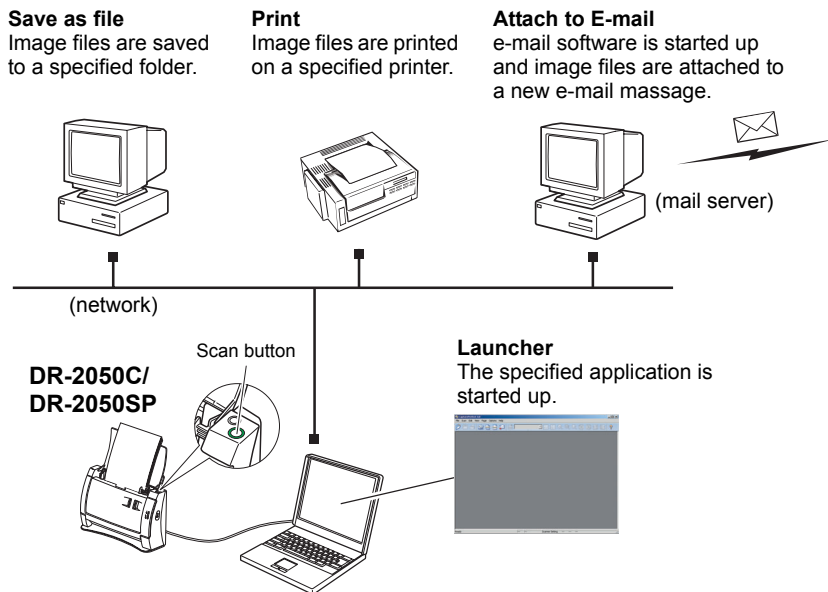
Scanning is performed according to preset scanning conditions, and image files are output on a specified printer.

- **Attach to E-mail**

Scanning is performed according to preset scanning conditions, e-mail software is started up, and scanned images are attached to a new e-mail.

- **Launcher**

The application selected by [Setting the Event Function] (See p. 37.) is started up.



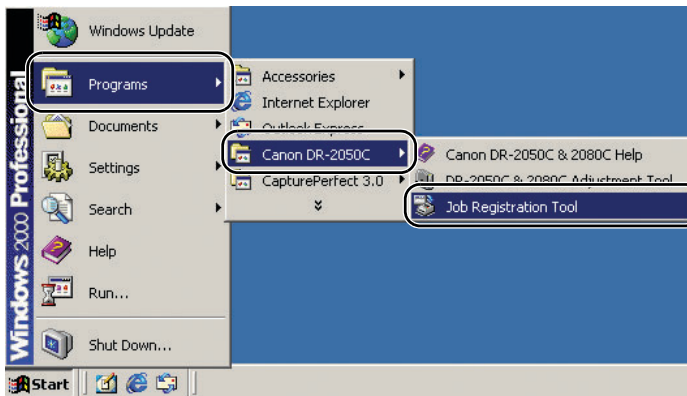


## Job Scan Procedure

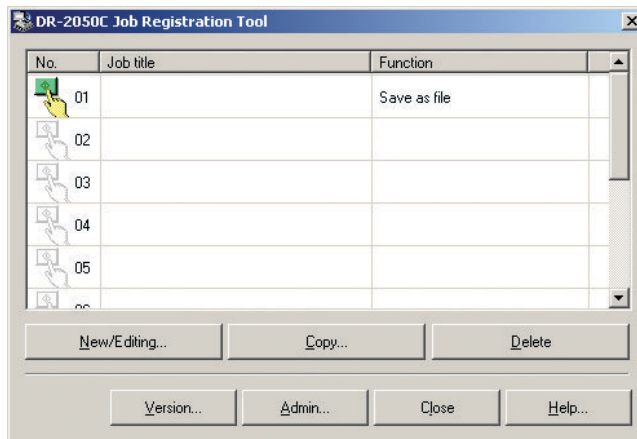
The following describes the procedure from starting up Job Registration Tools through to execution of a job scan. For details on setting up the Job Registration Tool, refer to “Job Registration Tool Settings” (See p. 54.) and the Job Registration Tool Help.

When [Launcher] is selected, events must be set. (See “Setting the Event Function,” on p. 37.)

1. Click the [Start] button, and then click [Programs] ([All Programs] if you are using Windows XP) → [Canon DR-2050C] → [Job Registration Tool].



The Job Registration Tool starts up.



### Note

- Job Registration Tool is a TWAIN compatible application that is installed with the ISIS/TWAIN driver.
- You can register jobs for numbers 1 through 10. The job for the icon that is colored is executed when the scan button is pressed.

---


**2.** Set up the Job Registration Tool.


For details on setting up the Job Registration Tool, refer to “Job Registration Tool Settings” (See p. 54.) and the Job Registration Tool Help.



**Note**

- You can register jobs for numbers 1 through 10.
- When [Launcher] is selected, set the events. (See “Job Registration Tool Settings,” on p. 54.)

**3.** Use the scan button to select the job you want to execute from the registered jobs, and then click the icon (  ) in the No. frame.

When you click the icon of the No. to which a job is registered the icon appears colored. (  )

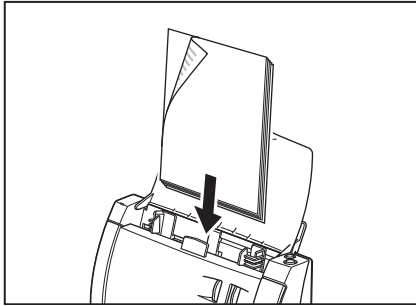


**Note**

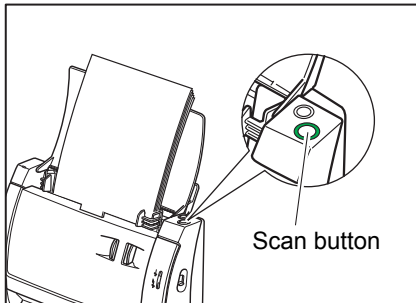
The job with the colored icon is executed when the scan button is pressed.

**4.** Click [Close] to close the [Job Registration Tool].

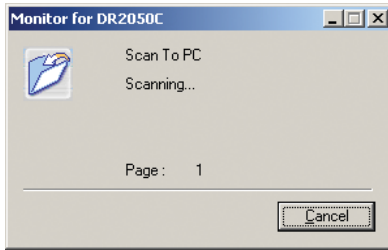
**5.** Place the document. (See “Placing a Documents,” on p. 23.)



**6.** Press the [Scan] button.

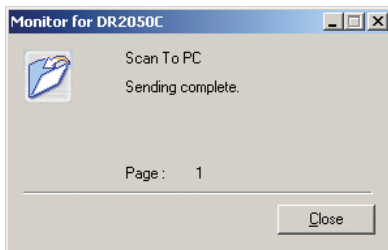


“Monitor for DR2050C” is displayed and the scan is executed.



7. When there are no more document sheets, the image data is transferred according to the specified conditions.

[Sending complete] is displayed on the “Monitor for DR2050C.”

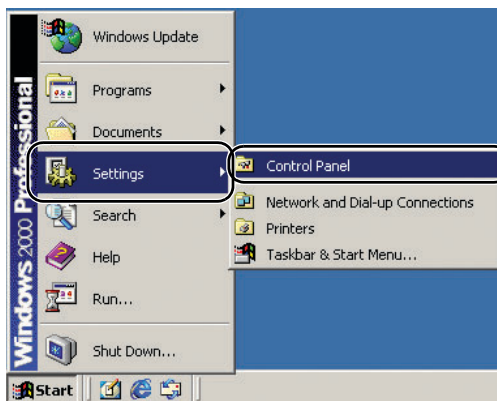


8. Click [Close] to close the “Monitor for DR2050C.”

## Setting the Event Function

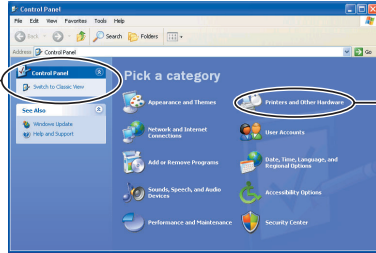
By setting [Events], you select the application to be started up when [Launcher] is selected in Job Registration Tool.

1. Use the following procedure to open the [Event settings] dialog box.
  1. Click the [Start] button, and then click [Settings] on the [Start] menu → click [Control Panel]. (For Windows XP, click the [Start] button → click [Control Panel].)

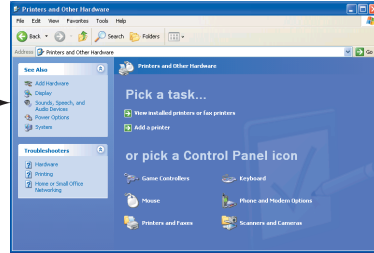


- For Windows XP, switch the Control Panel to Classic View, or select [Printers and Other Hardware] in the working field.

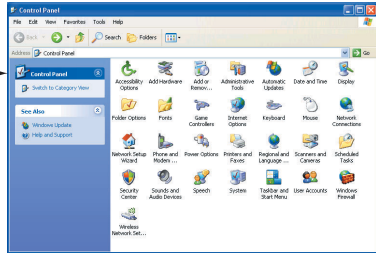
Control Panel (category view)



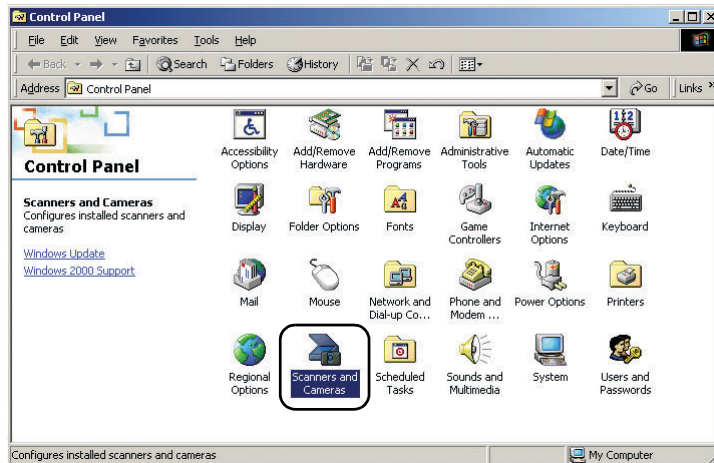
Printers and Other Hardware



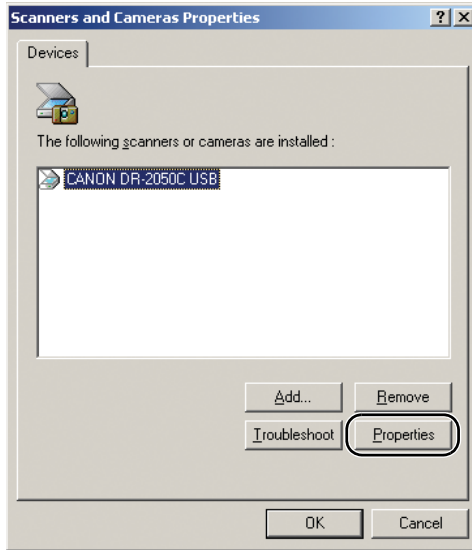
Control Panel (classic view)



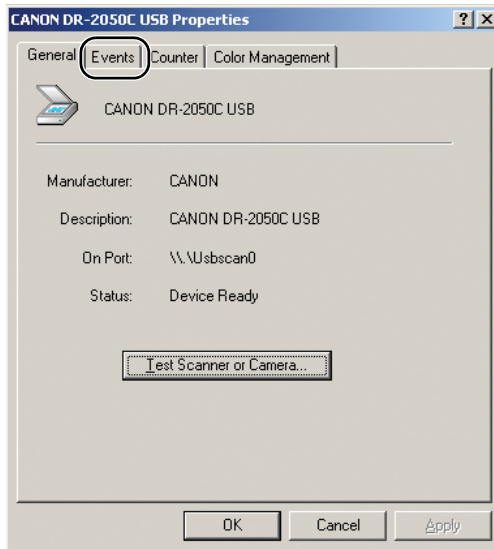
- Click [Scanners and Cameras].



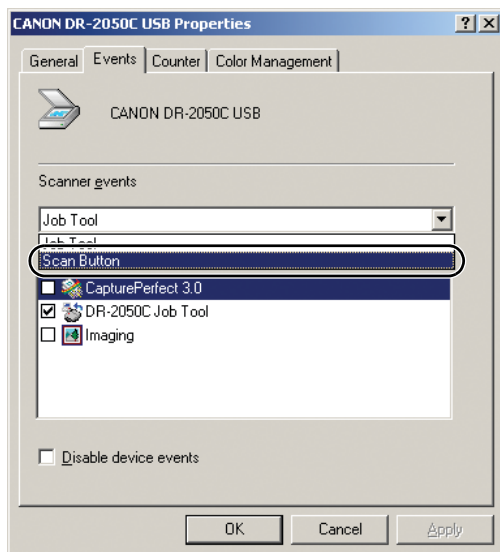
4. Select [CANON DR-2050C USB], and then click [Properties].



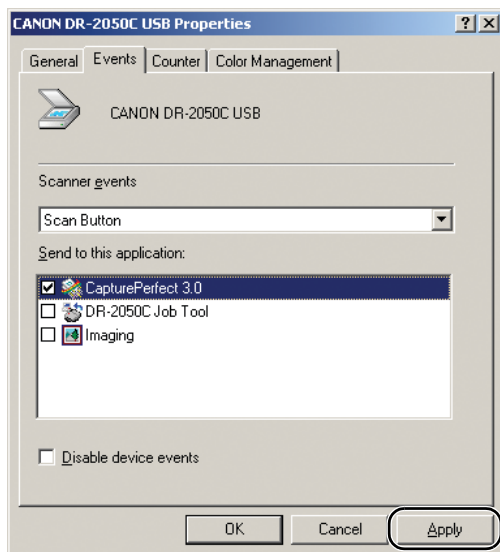
5. Click the [Events] tab.



2. Select [Scan] button from the [Scanner events] drop-down list.



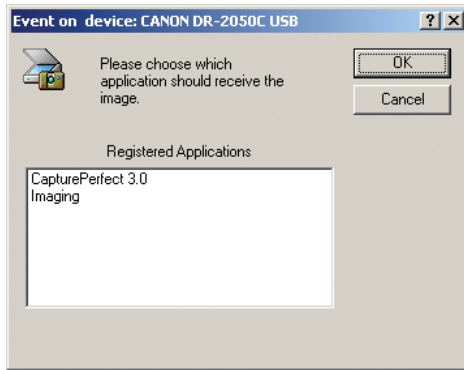
3. At [Send to this application] unmark the applications that are not to be started up, and click [Apply].



4. Click [OK] to close [CANON DR-2050C USB Properties].
5. Restart Windows to enable the new settings for the event function.

**Note**

- When two or more applications are marked at [Send to this application], the application selection dialog box will be displayed when [Launcher] in the [Job Tools] dialog box is selected, and the [Scan] button is clicked.



- Certain applications may not run normally when started as an event.
- To disable use of events, mark the [Disable device events] checkbox.

---

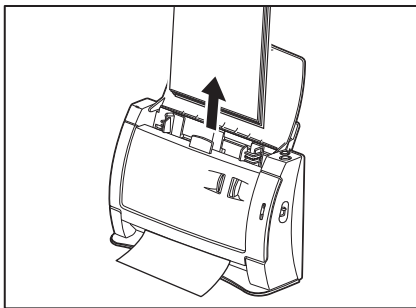
## 5. Clearing a Paper Jam

---

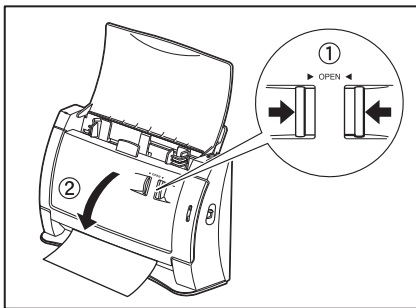
When paper jams occur during scanning, use the following procedure to clear them.

- ⚠ CAUTION**  
**When removing jammed paper, take care not to cut your hands on the edges of the paper.**

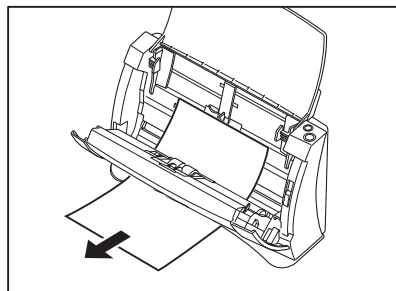
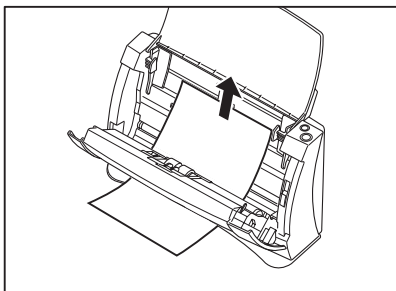
1. Remove any documents from the document feed tray.



2. Pressing the OPEN knob from both sides (①), pull the front unit forward to open it (②).



3. Remove the jammed document from the feed side or the output side.

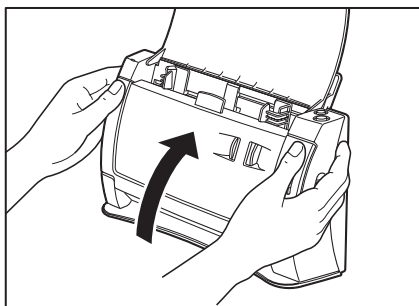




**IMPORTANT**

If you are removing the document manually, make sure to remove the document carefully, by pulling on it steadily and without applying too much force. Should the paper tear, make sure to remove any torn pieces remaining in the scanner.

4. Gently press the left and right sides of the top of the Front Unit. Be sure that the upper unit is completely closed by pushing on both edges with both hands until you hear a click.

**Note**

After removing the jammed paper, check to see if the last page of your document was scanned correctly, and then continue scanning.

---

## 6. Scanning Hints

---

This section describes helpful hints for setting up and using your scanner. Refer to these hints when you set up the ISIS/TWAIN driver. For more details on items not described in this section, see “Software Settings,” on p. 49.

---

### Scanning Double-sided Documents

- **I want to scan a double-sided document.**

Set Scanning Side to [Duplex].

See “ISIS Driver Settings ⑦,” on p. 50, and “TWAIN Driver Settings ⑦,” on p. 52.

---

### Scanning Non-standard Size Documents

- **I want to scan non-standard size documents**

When a non-standard size document is scanned with a standard size specified, a black margin around the scanned image. If you want to scan nonstandard size documents, set “Page Size” to [Auto-detection]. The size of the document is automatically detected.

See “ISIS Driver Settings ③,” on p. 50, and “TWAIN Driver Settings ③,” on p. 52.

- **I want to register non-standard size documents**

A non-standard document size can be registered as a Custom Paper Size.

See “ISIS Driver Settings ⑫,” on p. 50, and “TWAIN Driver Settings ⑫,” on p. 52.

- **I want to scan only part of a document**

The scan area can be specified before scanning. Note, however, that the scan area cannot be specified when “Page Size” is set to [Auto-detection].

See “ISIS Driver Settings ⑬,” on p. 50, and “TWAIN Driver Settings ⑬,” on p. 52.

---

## Scanning Multiple Documents

---

- **I want to divide a document that cannot be placed all at once into multiple stacks and scan them as a single file**

Set the “Feeding Option” in the Scanner Settings to [Automatic Feeding].

When the scanner detects a document, scanning starts automatically, and you can continue scanning batches until your job is complete.

When “Feeding Option” is set to [Panel-Feeding], scanning does not start until you place your document and press Scan button. This is handy when you need to align the edges of the document after it has been placed.

See “ISIS Driver Settings ⑧,” on p. 50, and “TWAIN Driver Settings ⑧,” on p. 52.

- **I want to divide up scanned images by individual document stacks to save as separate files**

Set the “Feeding Option” to [Automatic Feeding] or [Panel-Feeding], and set [Batch Separation] to [Auto]. (ISIS driver only)

See “ISIS Driver Settings ⑧,” on p. 50, and “ISIS Driver Settings ⑨,” on p. 50.

- **I want to scan a document one sheet at a time**

Set the “Feeding Option” to [Automatic Feeding] or [Panel-Feeding] to scan one sheet at a time. Scanning is interrupted after one page of the document is scanned.

If the “Feeding Option” is set to [Automatic Feeding] and the next document is loaded, the scanner starts scanning when it detects the next document.

If the “Feeding Option” is set to [Panel-Feeding] and the next document is loaded, the scanner starts scanning when the Scan button is pressed.

See “ISIS Driver Settings ⑧,” on p. 50, and “TWAIN Driver Settings ⑧,” on p. 52.

---

## Scanning Documents Containing Blank Sheets

- **I want to skip blank sheets contained in a document stack.**  
Set “Scanning Side” to [Skip blank page]. [Double-sided scanning] is not performed, and blank pages are skipped.  
See “ISIS Driver Settings ⑦,” on p. 50, and “TWAIN Driver Settings ⑦,” on p. 52.
- **Blank sheets are not skipped even if [Skip blank page] is set.**  
Set a higher [Ratio of black pixels] value (adjust the slider towards the right).  
If a low [Ratio of black pixels] value is set, blank sheets are sometimes not skipped due to the background color or dirt on the document.
- **Documents full of text are skipped as blank sheets.**  
Set a lower [Ratio of black pixels] value (adjust the slider towards the left).  
If a high [Ratio of black pixels] value is set, even documents full of text are sometimes skipped as blank sheets.



When a blank sheet is not skipped, adjust the slider to the right.  
When a text document is skipped, adjust the slider to the left.

---

## Adjusting Scanned Image

---

- **I want to enhance text on a document with a dark background**  
Set “Mode” to [Text Enhancement]. The background of the document is removed to enhance the text.  
See “ISIS Driver Settings ②,” on p. 50, and “TWAIN Driver Settings ②,” on p. 52.
- **I want to enhance text on a document that has light text on a light background**  
Set the scanning mode to [Advanced Text Enhancement II]. The background is eliminated or processed out of the document and the text is enhanced.  
See “ISIS Driver Settings ②,” on p. 50, and “TWAIN Driver Settings ②,” on p. 52.
- **I want to lessen the moire effect that occurs when color documents, such as magazine photos, are scanned**  
Scan at a resolution of 400 dpi or less and at [256 shade grayscale] or [24 bit smoothing colors]. This averages the image to suppress moire.  
See “ISIS Driver Settings ②,” on p. 50, and “TWAIN Driver Settings ②,” on p. 52.
- **I want to skip specific colors**  
Specify the color to skip during scanning in [Color drop-out].  
See “ISIS Driver Settings ⑮,” on p. 50, and “TWAIN Driver Settings ⑮,” on p. 52.
- **I want to enhance shadows from stamps**  
Select [Red Enhance] at Dropout Color.  
See “ISIS Driver Settings ⑮,” on p. 50, and “TWAIN Driver Settings ⑮,” on p. 52.
- **I want to enhance image contours**  
Adjust the [Edge emphasis] setting.  
See “ISIS Driver Settings ⑰,” on p. 50, and “TWAIN Driver Settings ⑰,” on p. 52.
- **I want to delete black borders around images**  
Check the [Border Removal] checkbox.  
See “ISIS Driver Settings ⑱,” on p. 50, and “TWAIN Driver Settings ⑱,” on p. 52.
- **I want to scan documents in negative image**  
Mark the [Reverse Image] checkbox. (TWAIN driver only)  
See “TWAIN Driver Settings ⑲,” on p. 52.

---

## Prescan Function

- **I want to preview the image before I scan it**

For the ISIS driver, check the [Prescan] checkbox. The Prescan window is displayed when scanning starts.

See “ISIS Driver Settings ⑪,” on p. 50.

For the TWAIN driver, check the [Prescan] checkbox and click [Preview]. One sheet of the document is scanned, and the Prescan window is displayed.

See “ISIS Driver Settings ⑩,” on p. 50, and “ISIS Driver Settings ⑭,” on p. 50.

---

## Registering Settings

- **I want to use preset scanning conditions again**

Assign a name to the scanning conditions and register them as a user preference. If you select the name of an already registered user preference, the conditions you set overwrite the settings of the selected user preference. See “ISIS Driver Settings ①,” on p. 50, and “TWAIN Driver Settings ①,” on p. 52.

With CapturePerfect 3.0 Scan JOB function, the scan mode can also be registered with the scanning conditions as a job, and scanning can be performed by selecting the job and then executing the scan job.

## 7. Software Settings

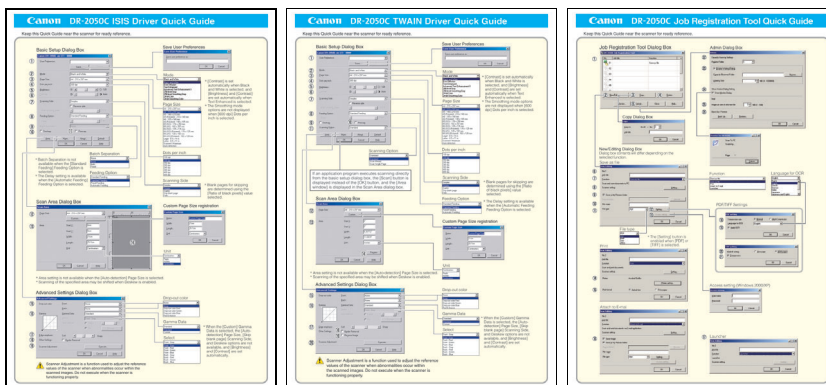
This section describes the setting items when setting the ISIS driver, TWAIN driver, and Job Registration Tool. For a more detailed description, read the Help files for each item.

**ISIS Driver Settings.....P. 50**  
**TWAIN Driver Settings.....P. 52**  
**Job Registration Tool Settings.....P. 54**



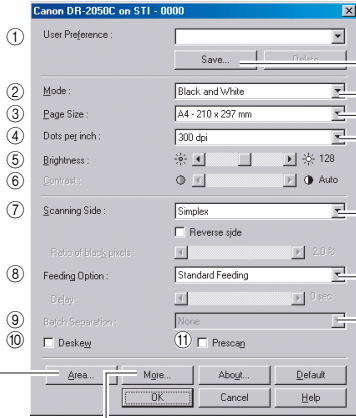
**Note**

A “Quick Guide” containing the same content as this section of the PDF file version of the User’s Guide is available on the setup disc. Print this guide and keep it near the scanner as a reference.



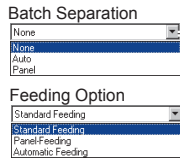
# ISIS Driver Settings

## Basic Setup Dialog Box

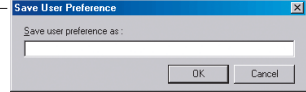


- 1
- 2
- 3
- 4
- 5
- 6
- 7
- 8
- 9
- 10

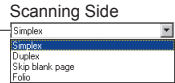
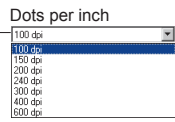
\* Batch Separation is not available when the [Standard Feeding] Feeding Option is selected.  
 \* The Delay setting is available when the [Automatic Feeding] Feeding Option is selected.



## Save User Preferences

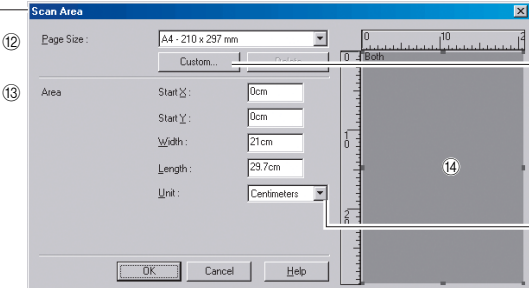


\* [Contrast] is set automatically when Black and White is selected, and [Brightness] and [Contrast] are set automatically when Text Enhanced is selected.  
 \* The Smoothing mode options are not displayed when [600 dpi] Dots per inch is selected.



\* Blank pages for skipping are determined using the [Ratio of black pixels] value selected.

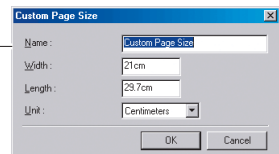
## Scan Area Dialog Box



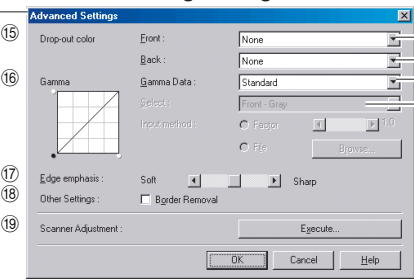
- 12
- 13

\* Area setting is not available when the [Auto-detection] Page Size is selected.  
 \* Scanning of the specified area may be shifted when Deskew is enabled.

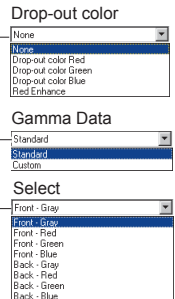
## Custom Page Size registration



## Advanced Settings Dialog Box



- 15
- 16
- 17
- 18
- 19



\* When the [Custom] Gamma Data is selected, the [Auto-detection] Page Size, [Skip blank page] Scanning Side, and Deskew options are not available, and [Brightness] and [Contrast] are set automatically.

**!** Scanner Adjustment is a function used to adjust the reference values of the scanner when abnormalities occur within the scanned images. Do not execute when the scanner is functioning properly.



## Basic Setup Dialog Box

- ① **User Preference**  
Name and save your settings.  
☞ Names can consist of up to 32 characters.
- ② **Mode**  
Selects the scanning mode.  
☞ [Text Enhanced] and [Advanced Text Enhancement II] process the background of a document so the text is enhanced and easier to read.  
☞ The Smoothing Gray/Color options used to smooth images and reduce moiré patterns are available when [400 dpi] Dots per inch or below is selected.
- ③ **Page Size**  
Selects the size of the pages to be scanned.  
☞ Selecting [Auto-detection] causes automatic page size detection when scanning.
- ④ **Dots per inch**  
Selects scanning resolution.
- ⑤ **Brightness**  
Adjusts brightness of scanned images. [Brightness] is set automatically when the Text Enhanced mode is selected.
- ⑥ **Contrast**  
Adjusts contrast of scanned images. [Contrast] is set automatically when the Black and White or Text Enhanced mode is selected.
- ⑦ **Scanning Side**  
Specifies the side of the document to scan.  
☞ When [Skip blank page] is selected, images are skipped if they are determined blank based on the [Ratio of black pixels] value.  
☞ When [Folio] is selected, both sides of a document are scanned, and the images displayed are combined into one image. For details, refer to the user's guide.  
☞ When the [Reverse side] check box is selected, a mirror image of the scanned document is displayed.  
☞ [Ratio of black pixels] specifies the ratio of black areas (0 to 20%) when skipping blank pages.
- ⑧ **Feeding Option**  
Selects the document feeding method.  
☞ [Standard Feeding] scans loaded documents after starting scanning from the application program.  
☞ [Panel-Feeding] scans loaded documents after pressing the scanner's scan button.  
☞ [Automatic Feeding] starts scanning whenever the scanner detects a loaded document.
- ⑨ **Batch Separation**  
This setting is enabled when the [Panel-Feeding] or [Automatic Feeding] Feeding Option is selected. Documents can be scanned as separate batches.  
☞ When [Auto] is selected, batch separation is performed when scanning

with [Panel-Feeding] or [Automatic Feeding] starts.

- ☞ When [Panel] is selected, batch separation is performed when the batch separation button in the Scan Panel is clicked.
- ⑩ **Deskew**  
When a document page feeds at a slant, the scanned image is straightened.
  - ⑪ **Prescan**  
When scanning starts, a page of the document is scanned and its image is displayed in the Prescan window. Scan Area Dialog Box
  - ⑫ **Page Size**  
Selects the size of the pages to be scanned.  
☞ Click [Custom] to register a non-standard document size as a custom page size.
  - ⑬ **Area**  
Specifies the area to be scanned.  
☞ These settings are disabled when [Auto-detection] is selected for the Page Size.
  - ⑭ **Area Window**  
The appearance of this window indicates the current Page Size setting.  
☞ The specified scan area can be adjusted by dragging the mouse.

## Advanced Settings Dialog Box

- ⑮ **Drop-out color**  
Enabled for all scanning modes except [24-bit Color], this function selects skipping (drop-out) of red, green, or blue or enhancement of red when scanning the front or back of documents.
- ⑯ **Gamma**  
To alter the standard gamma curve, select [Custom] Gamma Data and change the gamma curve. For details on this setting, click the Help button.
- ⑰ **Edge emphasis**  
Enhances contours in scanned images.
- ⑱ **Border Removal**  
Removes the black border that may be created around scanned images.
- ⑲ **Scanner Adjustment**  
Scanner Adjustment is a function used to adjust the reference values of the scanner when abnormalities occur within the scanned images, and normal maintenance does not remedy the problem. For details on Scanner Adjustment, refer to "Scanning Results Are Not as Expected" (See p. 75.) in the user's guide.

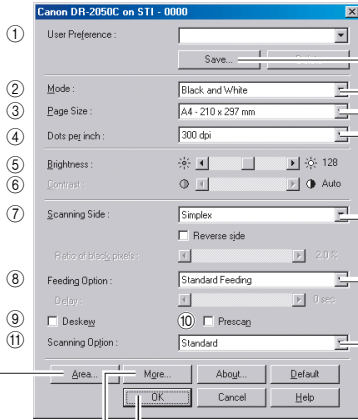
---

This Quick Guide describes the dialog boxes displayed by CapturePerfect. Depending on your application program, the basic setup dialog box may not be displayed. In this case, the Advanced Settings dialog box, which includes some of the functions in the basic setup dialog box, is displayed. Click the Help button for details.

---

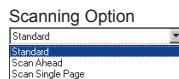
# TWAIN Driver Settings

## Basic Setup Dialog Box

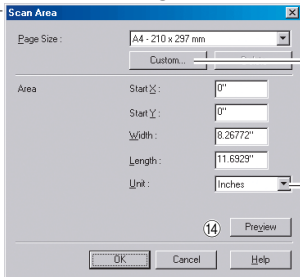


- ① User Preference
- ② Mode
- ③ Page Size
- ④ Dots per inch
- ⑤ Brightness
- ⑥ Contrast
- ⑦ Scanning Side
- ⑧ Feeding Option
- ⑨ Deskew
- ⑩ Prescag
- ⑪ Scanning Option

If an application program executes scanning directly from the basic setup dialog box, the [Scan] button is displayed instead of the [OK] button, and the [Area window] is displayed in the Scan Area dialog box.



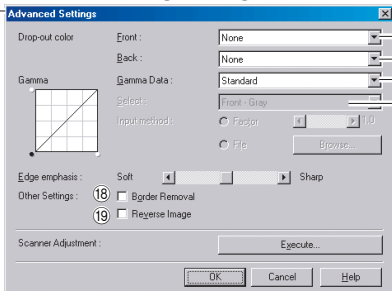
## Scan Area Dialog Box



- ⑫ Page Size
- ⑬ Area
- ⑭ Preview

- \* Area setting is not available when the [Auto-detection] Page Size is selected.
- \* Scanning of the specified area may be shifted when Deskew is enabled.

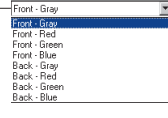
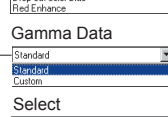
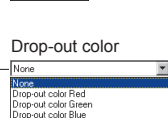
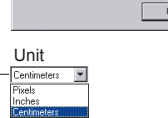
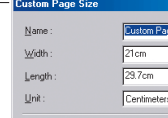
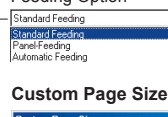
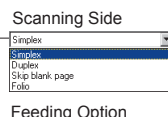
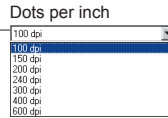
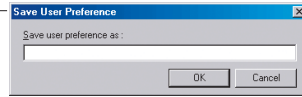
## Advanced Settings Dialog Box



- ⑮ Drop-out color
- ⑯ Gamma
- ⑰ Edge emphasis
- ⑱ Bgdr Removal
- ⑳ Reverse Image

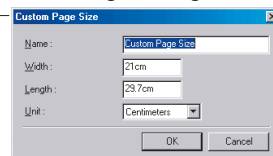
**!** Scanner Adjustment is a function used to adjust the reference values of the scanner when abnormalities occur within the scanned images. Do not execute when the scanner is functioning properly.

## Save User Preferences



- \* [Contrast] is set automatically when Black and White is selected, and [Brightness] and [Contrast] are set automatically when Text Enhanced is selected.
- \* The Smoothing mode options are not displayed when [600] Dots per inch is selected.
- \* Blank pages for skipping are determined using the [Ratio of black pixels] value selected.
- \* The Delay setting is available when the [Automatic Feeding] Feeding Option is selected.

## Custom Page Size registration



- \* When the [Custom] Gamma Data is selected, the [Auto-detection] Page Size, [Skip blank page] Scanning Side, and Deskew options are not available, and [Brightness] and [Contrast] are set automatically.

## Basic Setup Dialog Box

- ① **User Preference**  
Name and save your settings.
- ② **Mode**  
Selects the scanning mode.
  - ☞ [Text Enhanced] and [Advanced Text Enhancement II] process the background of a document so the text is enhanced and easier to read.
  - ☞ The Smoothing Gray/Color options used to smooth images and reduce moiré patterns are available when [400 dpi] Dots per inch or below is selected.
- ③ **Page Size**  
Selects the size of the pages to be scanned.
  - ☞ Selecting [Auto-detection] causes automatic page size detection when scanning.
- ④ **Dots per inch**  
Selects scanning resolution.
- ⑤ **Brightness**  
Adjusts brightness of scanned images. [Brightness] is set automatically when the Text Enhanced mode is selected.
- ⑥ **Contrast**  
Adjusts contrast of scanned images. [Contrast] is set automatically when the Black and White or Text Enhanced mode is selected.
- ⑦ **Scanning Side**  
Specifies the side of the document to scan.
  - ☞ When [Skip blank page] is selected, images are skipped if they are determined blank based on the [Ratio of black pixels] value.
  - ☞ When [Folio] is selected, both sides of a document are scanned, and the images displayed are combined into one image. For details, refer to the user's guide.
  - ☞ When the [Reverse side] check box is selected, the mirror image of the scanned document is displayed.
  - ☞ [Ratio of black pixels] specifies the ratio of black areas (0 to 20%) when skipping blank pages.
- ⑧ **Feeding Option**  
Selects the document feeding method.
  - ☞ [Standard Feeding] scans all loaded documents when scanning is started from the application program.
  - ☞ [Panel-Feeding] scans all loaded documents when scanning is started by the scanner's scan button.
  - ☞ [Automatic Feeding] starts scanning when the scanner detects a loaded document.
- ⑨ **Deskew**  
When a document page feeds at a slant, the scanned image is straightened.
- ⑩ **Prescan**  
When scanning starts, a page of the document is scanned and its image is displayed in the Prescan window.

## ⑪ Scanning Option

- Specifies operation during scanning.
- ☞ [Standard]:  
after one page has been scanned and ejected, the next page is scanned.
  - ☞ [Scan Ahead]:  
scans document pages continuously.
  - ☞ [Scan Single Page]:  
Scanning Side is set and fixed at [Simplex], and only one page is scanned.

## Scan Area Dialog Box

- ⑫ **Page Size**  
Selects the size of the pages to be scanned.
  - ☞ Click [Custom] to register a non-standard document size as a custom page size.
- ⑬ **Area**  
Specifies the area to be scanned.
  - ☞ These settings are disabled when [Auto-detection] is selected for the Page Size.
- ⑭ **Preview**  
When [Prescan] is selected, click this button to display a preview image in the Prescan window after a page of the document is scanned.

## Advanced Settings Dialog Box

- ⑮ **Drop-out color**  
Enabled for all scanning modes except [24-bit Color], this function selects skipping (drop-out) of red, green, or blue or enhancement of red when scanning the front or back of documents.
- ⑯ **Gamma**  
To alter the standard gamma curve, select [Custom] Gamma Data and change the gamma curve. For details on this setting, click the Help button.
- ⑰ **Edge emphasis**  
Enhances contours in scanned images.
- ⑱ **Border Removal**  
Removes the black border that may be created around scanned images.
- ⑲ **Reverse Image**  
When the [Black and White], [Error Diffusion], or [Text Enhanced] mode is selected, black and white are reversed in the scanned image.
- ⑳ **Scanner Adjustment**  
Scanner Adjustment is a function used to adjust the reference values of the scanner when abnormalities occur within the scanned images, and normal maintenance does not remedy the problem. For details on Scanner Adjustment, refer to "Scanning Results Are Not as Expected" (See p. 75.) in the user's guide.

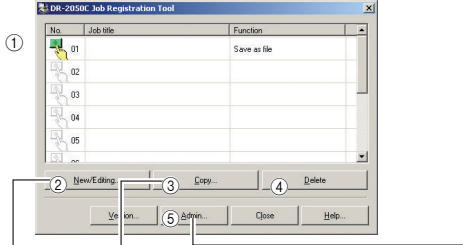
---

This Quick Guide describes the TWAIN driver settings. Click the Help button for details.

---

# Job Registration Tool Settings

## Job Registration Tool Dialog Box



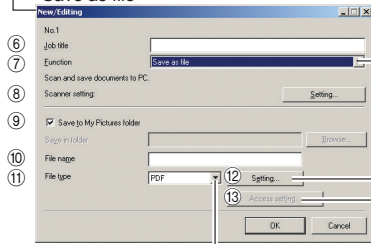
### Copy Dialog Box



### New/Editing Dialog Box

Dialog box contents will differ depending on the selected function.

#### Save as file

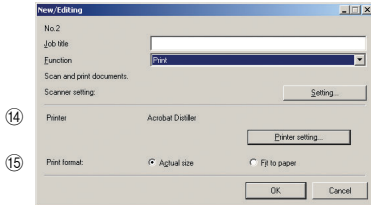


#### File type

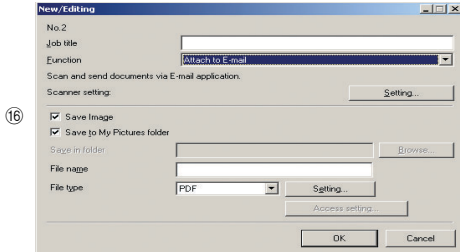


\* The [Setting] button is enabled when [PDF] or [TIFF] is selected.

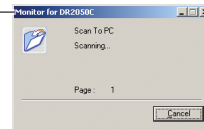
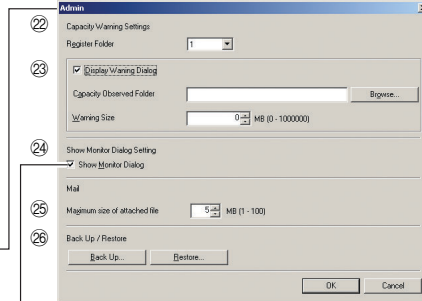
#### Print



#### Attach to E-mail



## Admin Dialog Box



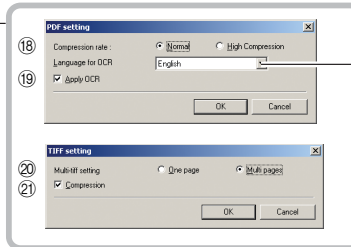
### Function



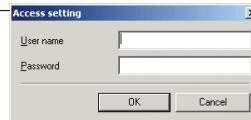
### Language for OCR



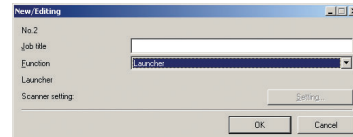
### PDF/TIFF Settings




### Access setting (Windows 2000/XP)



### Launcher



## Job Registration Tool Dialog Box

- ① **Job list**  
Shows the registered jobs.  
☞ The job for the icon (  ) that is colored is executed when the scan button is pressed.
- ② **[New/Editing] button**  
Opens the New/Editing dialog box.
- ③ **[Copy] button**  
Copies a registered job to another Job No.
- ④ **[Delete] button**  
Deletes the selected job from the Job list.
- ⑤ **[Admin] button**  
Opens the Admin dialog box.

## New/Editing Dialog Box

- ⑥ **Job title**  
Enter the job title to appear on the display panel.
- ⑦ **Function**  
Selects the function assigned to the Scan button.  
☞ The contents of the Editing dialog box are determined by the selected function.
- ⑧ **Scanner setting**  
Opens the TWAIN driver's basic setting dialog box to configure the scanner.
- ⑨ **Save to My Pictures folder**  
Saves scanned images in the My Pictures folder in My Documents.  
☞ When this check box is not checked, you can specify the destination folder for saving images.
- ⑩ **File name**  
Specifies the file name.  
☞ Image file names are created by appending a time stamp to the specified file name.
- ⑪ **File type**  
Selects the file format for saved images.  
☞ The [Setting] button is enabled when PDF or TIFF is selected.
- ⑫ **[Setting] button**  
This button is enabled when the PDF or TIFF file type is selected, and opens the PDF or TIFF Setting dialog box.  
☞ The PDF setting dialog box provides [Compression] and [OCR] settings.  
☞ The TIFF setting dialog box provides [Multi-tiff setting] and [Compression] settings.
- ⑬ **[Access setting] button**  
Opens the Access setting dialog box.  
☞ Enter the correct User name and Password to obtain access to a shared network folder.
- ⑭ **Printer**  
Shows the default printer. Printer settings can be changed by clicking the [Printer setting] button.
- ⑮ **Print format**  
Selects the printing size.  
☞ [Actual size] prints at the same size as the document.  
☞ [Fit to paper] resizes scanned images to fit on the printing paper when the images are larger than the paper. When the images are smaller than the paper, they are printed at actual size.
- ⑯ **Save Image**  
Select this check box to save images scanned using "Attach to E-mail".

- ⑰ **Launcher**  
Starts applications set with the Windows event function. See the user's guide for detailed information.

## PDF/TIFF Settings

- ⑱ **Compression rate**  
Selects [Normal] or [High Compression] rate.  
☞ [High Compression] reduces the file's size, but also reduces the image quality slightly.  
☞ [High Compression] is useful for grayscale and color images.
  - ⑲ **Language for OCR/Apply OCR**  
Recognizes printed text in a document as characters, and adds text data to the PDF file.  
☞ When the [Apply OCR] check box is selected, recognized text data is saved where the printed text is located in the PDF file.  
☞ When OCR is applied, Deskew is enabled, regardless of the configured settings for the TWAIN driver.
  - ⑳ **Multi-tiff setting**  
Selects the saving method for multiple page images.  
☞ [One page] creates one file for one page with the number of TIFF files corresponding to the number of pages.  
☞ [Multi pages] saves the images for all of the pages as one file.
  - ㉑ **Compression**  
Compresses image files before saving them.  
☞ Black and white images are compressed as CCITT Group 4 images, while grayscale and color images are compressed as JPEG images.
- ## Admin Dialog Box
- ㉒ **Capacity Warning Settings**  
Specifies the folder for saved image files, and the capacity of that folder, in advance.  
☞ After specifying the folder and starting to scan, a warning message is displayed when the specified capacity is reached while scanning.
  - ㉓ **Register Folder/Display Warning Dialog**  
The [Capacity Observed Folder] and [Warning Size] items are enabled by specifying a [Register Folder] (number) and selecting the [Display Warning Dialog] check box.  
☞ When the capacity warning is displayed, follow the displayed instructions to continue scanning.
  - ㉔ **Show Monitor Dialog**  
The Monitor for DR-2050C dialog box appears when the Scan button is pressed, and the scan progress is displayed.
  - ㉕ **Maximum size of attached file**  
Specifies a maximum size for image files to be attached to e-mails.
  - ㉖ **Job Backup/Restore**  
Backs up and restores registered jobs.  
☞ Backup files can be restored on another DR-2050C document scanner.



# Chapter 3

---

## Appendices

<b>1. Regular Maintenance</b>	<b>58</b>
Cleaning the Scanner	58
Cleaning Inside the Scanner	58
Cleaning the Scanning Glass and the Rollers	59
Cleaning the Metal Rollers	61
<b>2. Removing and Attaching the Rollers</b>	<b>62</b>
Roller Replacement Cycle	62
Resetting the Counter	63
Removing and Attaching the Feed Roller	65
Removing and Attaching the Retard Roller	68
<b>3. Troubleshooting</b>	<b>72</b>
The Scanner Does Not Turn ON	72
The Scanner Is Not Recognized	72
Slow Scanning Speed	73
Scanning Is Not Performed	74
Documents Are Not Fed Correctly	74
Paper Is Not Ejected Correctly	75
Saved Image Files Do Not Open	75
Scanning Results Are Not as Expected	75
<b>4. Uninstalling Software</b>	<b>78</b>
Uninstalling the ISIS/TWAIN Driver/ Job Registration Tool	80
Uninstalling CapturePerfect 3.0	82
<b>5. Specifications</b>	<b>84</b>
Specifications	84

---

# 1. Regular Maintenance

---

Perform the regular maintenance described below to maintain peak scanning quality.

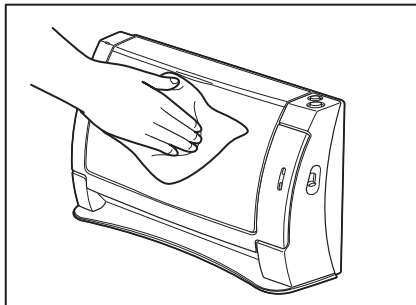


## CAUTION

- **When cleaning the scanner or the inside of the scanner, turn OFF the power switch and unplug the power cord from the outlet.**
- **Do not use spray cleaners to clean the scanner. Precision mechanisms inside the scanner may get wet and result in malfunction.**
- **Never use paint thinner, alcohol, or other organic solvents to clean the scanner. Such solvents can damage or discolor the exterior of the scanner, or create a risk of fire or electric shock.**

## Cleaning the Scanner

Moisten a cloth with plain water, wring out the excess water, and then wipe the exterior of the scanner to clean it.



## Cleaning Inside the Scanner

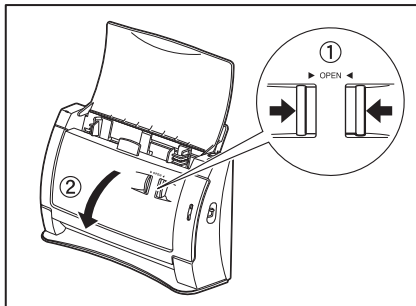
Dust or paper particles inside the scanner can cause lines in scanned images. Use a blower for regular cleaning of dust and paper particles from inside the scanner. After finishing a large scanning job, you should turn OFF the scanner and then clean any paper particles that are remaining.



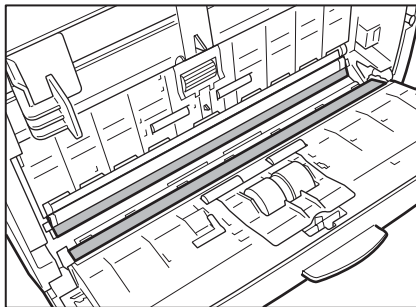
## Cleaning the Scanning Glass and the Rollers

If your scanned images contain lines or smudges, or if the scanned documents are dirty, then the scanning glass or the rollers inside the scanner may be dirty. Clean them periodically.

1. Open the document feed tray.
2. Pressing the OPEN knob from both sides (①), pull the front unit forward to open it (②).



3. Use a blower to keep the interior of the scanner free of dust and paper particles.
4. Use a clean dry cloth to wipe dirt off the scanning glass.  
Wipe both the top and bottom scanning glasses.



### CAUTION

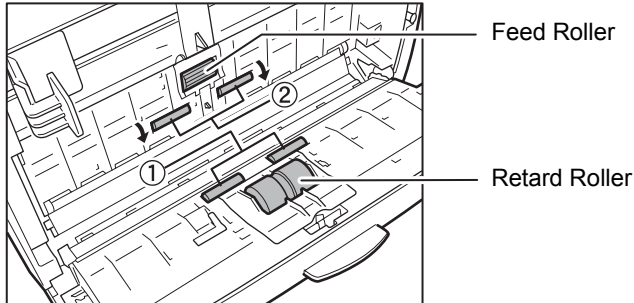
Do not use spray type cleaners to clean the scanner. Precision mechanisms, such as the light source, may get wet which will cause a malfunction.



### IMPORTANT

Scratches on the scanning glass may cause marks on the images and could cause feeding errors. If there are scratches on the scanning glass, contact your local authorized Canon dealer or service representative.

- 
5. Rotate the rollers (①) and (②) as you clean them. Moisten a cloth with plain water, wring out excess water, wipe the rollers and then dry it with a clean dry cloth.



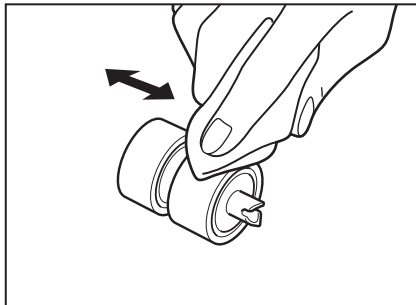
6. Remove the feed roller and retard roller. (See p. 66, p. 69.)



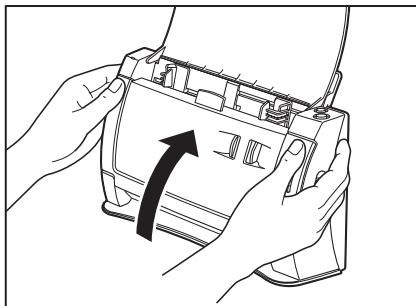
**IMPORTANT**

After removing the feed roller and retard roller, clean them and then return them to the scanner.

7. Wipe the removed rollers with a firmly wrung cloth moistened with water.

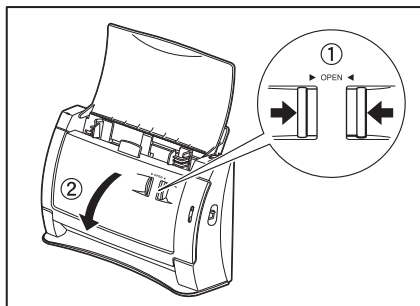


8. Attach the rollers that were removed. (See p. 67, p. 70.)
9. Gently press the left and right sides of the top of the front unit. Return the unit fully to its original position until you hear it click into place.

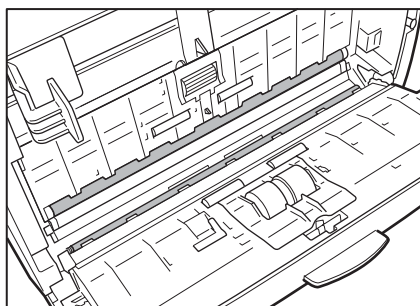


## Cleaning the Metal Rollers

1. Turn on the scanner.
2. Open the document feed tray.
3. Pressing the OPEN knob from both sides (①), pull the front unit forward to open it (②).



4. Use a clean dry cloth to wipe the metal rollers (■ parts in the illustration). Press the Scan button and Stop button at the same time to rotate the metal rollers in small increments.



### ⚠ CAUTION

- There are two metal rollers, one for the Front Unit and one for the scanner. Be sure to wipe both of them. Do not spray water or neutral detergent directly on the metal rollers. Doing so can damage precision mechanisms, such as the light source. Moisture on the scanner or your hands also creates the risk of electric shock.
- Scanner power needs to be turned on when cleaning the metal rollers. Because of this, you need to exercise extra caution when cleaning them.

---

## 2. Removing and Attaching the Rollers

---

Follow the relevant procedure to remove and attach the feed roller and retard roller when you clean or replace them.



### IMPORTANT

Feed rollers are consumable parts. When the rollers start to wear out, paper jams and misfeeds may occur more often. When this happens, buy an exchange roller kit, and replace the feed roller and the retard roller.

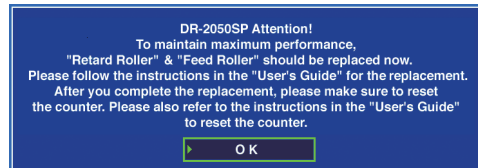
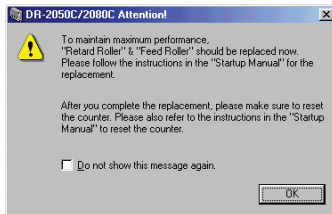


### CAUTION

**Do not use excessive force when removing or attaching the rollers. Doing so may damage them.**

## Roller Replacement Cycle

When the number of pages scanned exceeds 30,000, a roller replacement message will appear when the computer is started. When you are using the DR-2050SP in the Presentation mode, a message prompting you to change the rollers is displayed after the opening screen when the scanner's power is turned ON. Buy an exchange roller kit, and replace the feed roller and the retard roller.



When using the DR-2050SP in Presentation mode



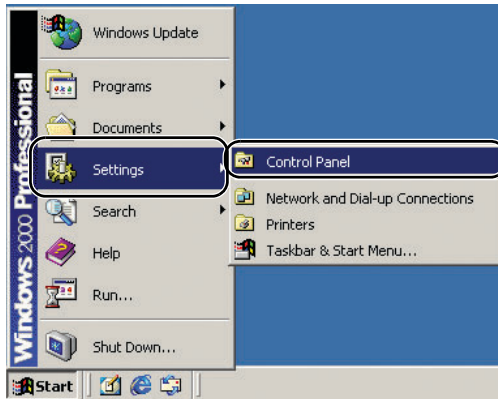
### IMPORTANT

- If misfeeds happen often, check the rollers for wear, and replace them if necessary before the message is displayed.
- Be sure to reset the counter after replacing the rollers. (See “Resetting the Counter,” on p. 63.)
- Contact your local authorized Canon dealer or service representative for information about the exchange roller kit (feed roller and retard roller).

# Resetting the Counter

After replacing the feed rollers, open the [Counter setup] dialog box and reset the counter.

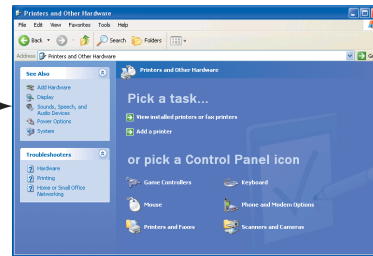
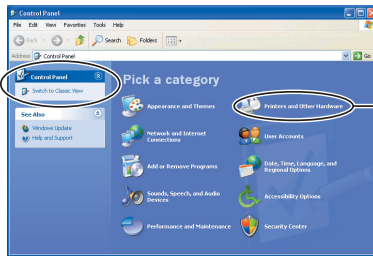
1. Follow the procedure below to open the [Counter setup] dialog box.
  1. Click the [Start] button, → click [Settings] on the Start menu → click [Control Panel]. (For Windows XP, click the [Start] button → click [Control Panel].)



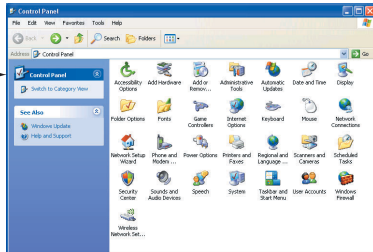
2. For Windows XP, switch the Control Panel to Classic View, or select [Printers and Other Hardware] in the working field.

Control Panel (category view)

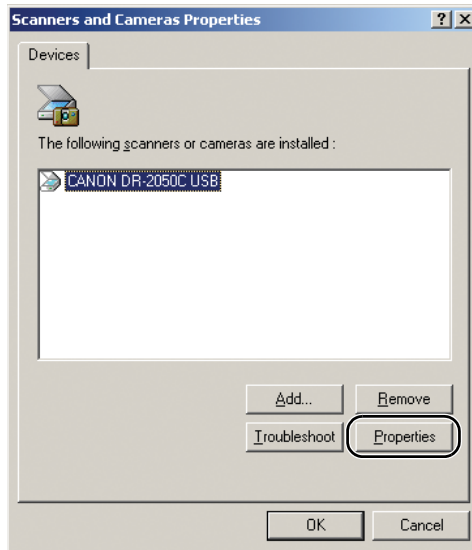
Printers and Other Hardware



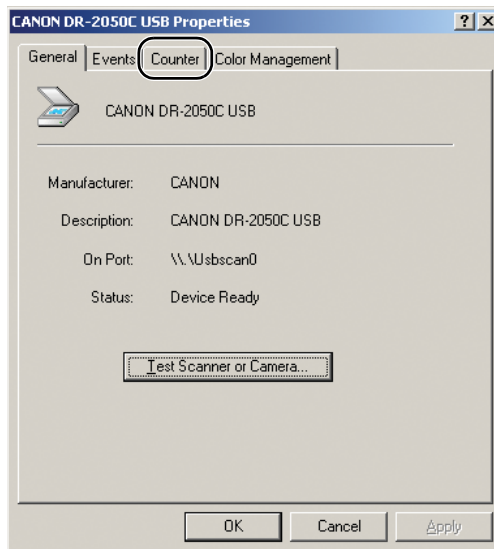
Control Panel (classic view)



3. Select [CANON DR-2050C USB], and then click [Properties].



4. Click the [Counter] tab.



2. Click the [Reset] button, and then make sure that the [Retard and Feed roller] has been set to 0.



## Removing and Attaching the Feed Roller

Follow the procedure below to remove and attach the feed roller for cleaning or replacement.



### Note

When attaching the feed roller during installation, operate the roller fastening lever according to the removal procedure and then attach the feed roller.



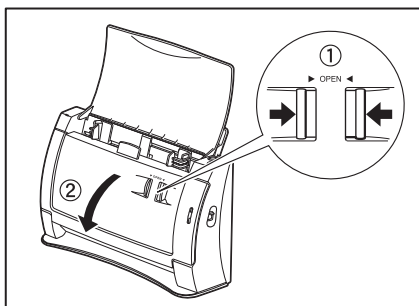
### CAUTION

**Do not use excessive force when removing or attaching the feed roller. Doing so may damage them.**

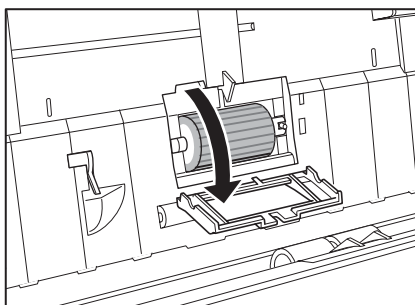
---

## Removing the Feed Roller

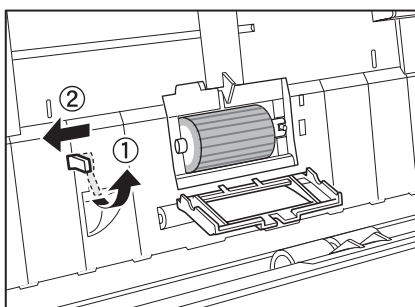
1. Pressing the OPEN knob from both sides (①), pull the front unit forward to open it (②).



2. Open the roller cover on the scanner side. Insert a finger into the depression in the cover and open it.

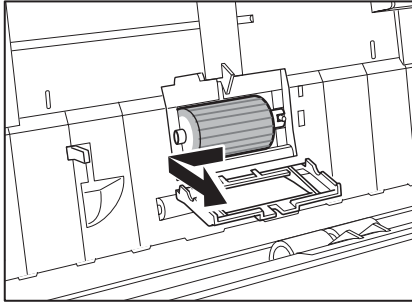


3. Raise the roller lock lever (①), and then slide it to the left (②).



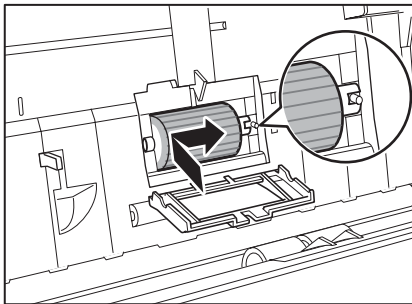


4. Shift the feed roller to the left to separate it from the shaft, and then remove it.

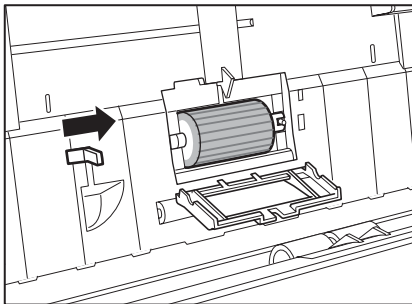


## Attaching the Feed Roller

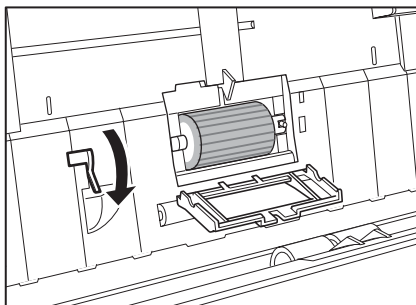
1. Set the feed roller into the hollow inside the roller cover, and align the notch in the roller with the scanner shaft.



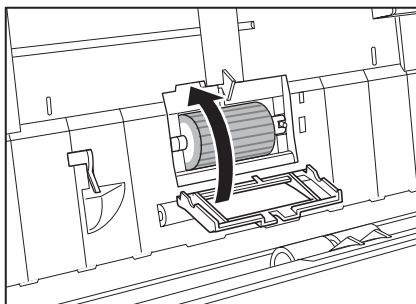
2. Slide the roller lock lever to the right, and then insert the shaft into the hole on the left side of the roller.



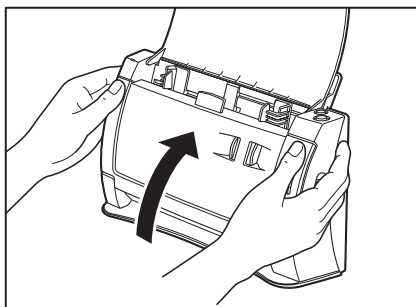
3. Lower the lever to lock the roller shaft.



4. Close the roller cover. Return the cover fully to its original position until you hear it click into place.



5. Gently press the left and right sides of the top of the Front Unit. Return the unit fully to its original position until you hear it click into place.



## Removing and Attaching the Retard Roller

Follow the procedure below to remove and attach the retard roller for cleaning or replacement.



### Note

When attaching the feed roller during installation, operate the roller fastening lever according to the removal procedure and then attach the feed roller.

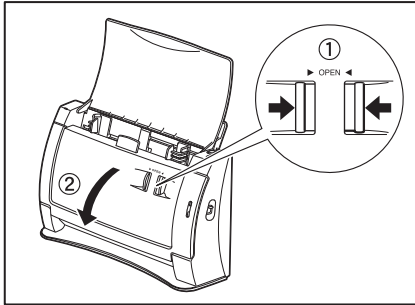
**CAUTION**

Do not use excessive force when removing or attaching the rollers. Doing so may damage them.

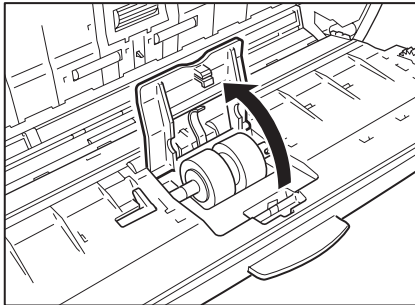
---

## Removing the Retard Roller

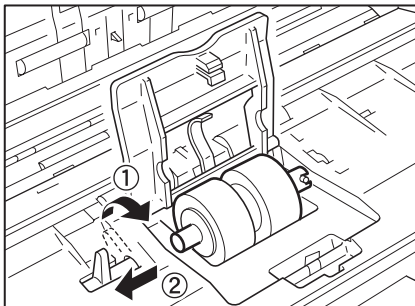
1. Pressing the OPEN knob from both sides (①), pull the front unit forward to open it (②).



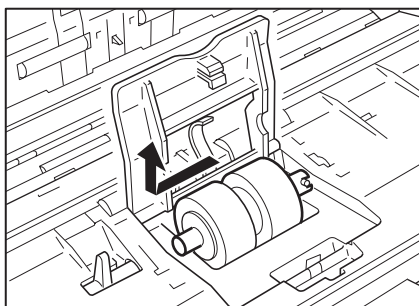
2. Holding the edges of the roller cover on the inside of the front unit, open the cover.



3. Raise the roller lock lever (①), and then slide it to the left (②).



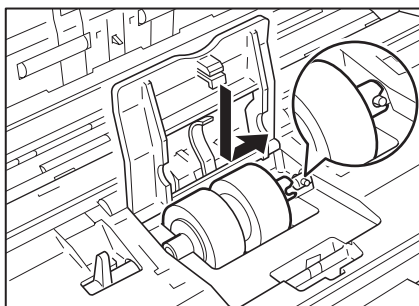
- 
4. Shift the Retard Roller to the left to separate it from the shaft, and then remove it.



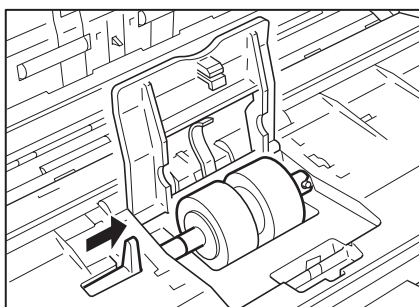
---

### Attaching the Retard Roller

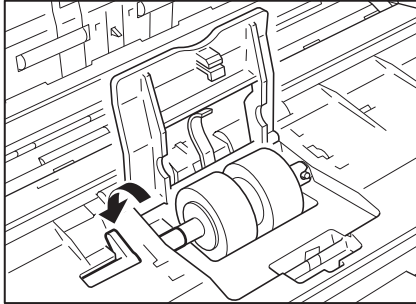
1. Position the retard roller so the notch in the roller is facing the scanner's shaft.



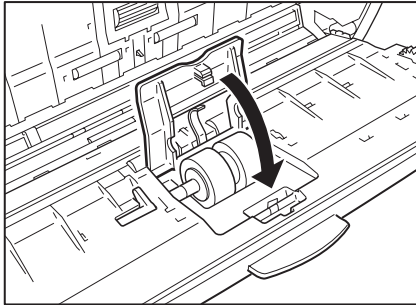
2. Slide the roller lock lever to the right, and then insert the shaft into the hole on the left side of the retard roller.



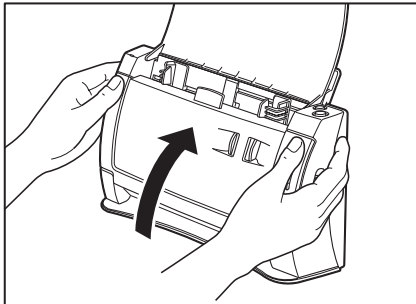
3. Push the roller lock lever towards the back of the scanner to lock the retard roller in place.



4. Attach the roller cover. Be sure that the upper unit is completely closed by pushing on both edges with both hands until you hear a click.



5. Gently press the left and right sides of the top of the front unit. Return the unit fully to its original position until you hear it click into place.



---

## 3. Troubleshooting

---

This section describes the possible problems that might occur during use of the scanner and how to solve them.

<b>The Scanner Does Not Turn ON .....</b>	<b>P. 72</b>
<b>The Scanner Is Not Recognized .....</b>	<b>P. 72</b>
<b>Slow Scanning Speed.....</b>	<b>P. 73</b>
<b>Scanning Is Not Performed.....</b>	<b>P. 74</b>
<b>Documents Are Not Fed Correctly .....</b>	<b>P. 74</b>
<b>Paper Is Not Ejected Correctly .....</b>	<b>P. 75</b>
<b>Saved Image Files Do Not Open.....</b>	<b>P. 75</b>
<b>Scanning Results Are Not as Expected.....</b>	<b>P. 75</b>

If, after consulting this section, you still cannot resolve the problem, contact your local authorized Canon dealer or your service representative.

### The Scanner Does Not Turn ON

Check the following if the scanner does not turn on:

- Is the power cord connected correctly?
- Is the power cord connected securely?
- Is the power cord inserted into the power outlet?

For details on connecting the power cord, see “Step 4. Connecting the Scanner to Your PC,” in the Easy Start Guide.

### The Scanner Is Not Recognized

The following are possible causes of the PC failing to recognize the scanner. Check each possible cause.

---

<b>Problem</b>	The scanner is not correctly connected.
<b>Solution</b>	Make sure that the scanner and the computer are correctly connected with the USB cable. (See “Step 4. Connecting the Scanner to Your PC,” in the Easy Start Guide.)

---

<b>Problem</b>	The scanner power is switched OFF.
<b>Solution</b>	Make sure that the scanner is switched ON. If the scanner is OFF, turn the scanner ON. (See “Step 4. Connecting the Scanner to Your PC,” in the Easy Start Guide.)

---

---

<b>Problem</b>	The scanner does not support your USB interface.
<b>Solution</b>	This product is not guaranteed to operate with all types of USB interfaces. Contact your local authorized Canon dealer or service representative for more information. (See p. 15.)

---

<b>Problem</b>	The scanner does not support the USB cable.
<b>Solution</b>	Use the USB cable provided with the scanner.

---

<b>Problem</b>	The USB hub is not compatible with the scanner.
<b>Solution</b>	Remove the USB hub.

---

## Slow Scanning Speed

The following problems might cause the scanning speed to be slow.

---

<b>Problem</b>	Other applications are running in the background on your PC.
<b>Solution</b>	Quit all other applications that are running.

---

<b>Problem</b>	Resident applications, such as anti-virus software, are draining memory resources.
<b>Solution</b>	Quit all resident applications.

---

<b>Problem</b>	Temporary files cannot be created in the TEMP folder, as there is not enough free space on the hard disk.
<b>Solution</b>	Delete unwanted files on the hard disk to increase free space on the hard disk.

---

<b>Problem</b>	The USB port you are using does not support Hi-Speed USB 2.0.
<b>Solution</b>	Scanning speeds are lower if your computer's standard USB interface is not compatible with Hi-Speed USB 2.0. (See p. 15.) Use a computer that is equipped with USB that is compatible with Hi-Speed USB 2.0 as standard.

---

<b>Problem</b>	The USB cable does not support Hi-Speed USB 2.0.
<b>Solution</b>	Use the USB cable provided with the scanner.

---

<b>Problem</b>	The USB hub does not support Hi-Speed USB 2.0.
<b>Solution</b>	Remove the USB hub.

---

---

## Scanning Is Not Performed

Check the following if the scanner does not scan an image even though the scanning operation is performed:

- Is the scanner correctly connected to the computer?
- Has the scanner driver been installed?
- Has the application software been installed correctly? Has the application software been set up correctly?
- Is there a problem in the PC system?



### IMPORTANT

- If documents are not scanned normally even if the scanner setup is OK, a probable cause is that the scanner driver or application software is not running correctly. Re-install the scanner driver or application software.
- When system errors result in the scanner not functioning at all, turn OFF the scanner and wait at least ten seconds before turning it ON again. If the error continues to occur, restart the computer.
- When scanning continues, make sure that the last document scanned was scanned correctly.

## Documents Are Not Fed Correctly

The following are possible causes when documents are not fed correctly.

Problem	Static electricity, etc., is causing the pages of the document to stick together, and they cannot be separated correctly by the scanner.
Solution	Before you place your document, thoroughly fan the stack of papers. (See “Placing a Documents,” on p. 23.)
Problem	An attempt was made to scan a size, thickness, or type of paper that cannot be scanned by the scanner.
Solution	Check the document size, thickness, and paper type. (See “Documents,” on p. 20.)
Problem	The rollers inside the scanner are dirty or worn.
Solution	Refer to p. 59 and clean the rollers. If the rollers are worn, then they need to be replaced. Contact your local authorized Canon dealer or service representative to purchase a roller replacement kit.

For details on how to clear jammed paper, see “Clearing a Paper Jam,” on p. 42.



## Paper Is Not Ejected Correctly

When you are performing page-by-page scanning while a multi-page document is set in the scanner, scanning pauses with the trailing edge of the scanned sheet being engaged by the eject roller.

<b>Problem</b>	Under these conditions, the scanner enters a standby state and pauses for the next sheet. It does not indicate a paper jam.
<b>Solution</b>	To scan the next sheet of the document, manually remove the page that is engaged by the eject roller, or just start the next scan job.

For details on how to clear jammed paper, see “Clearing a Paper Jam,” on p. 42.

## Saved Image Files Do Not Open

When image files saved by CapturePerfect 3.0 cannot be opened by other applications, the probable causes are as follows.

---

**Symptoms A multi-page TIFF file saved in CapturePerfect 3.0 cannot be opened by other applications.**

<b>Problem</b>	The application you are using to open the TIFF file does not support multi-page TIFF files.
<b>Solution</b>	Open the file with an application that supports multi-page TIFF files.

---

**Symptoms A TIFF file saved in CapturePerfect 3.0 cannot be opened by other applications.**

<b>Problem</b>	If the TIFF file saved in CapturePerfect 3.0 has been compressed, the application you are using to open the TIFF file does not support the compression type that was used to save the file in CapturePerfect 3.0.
<b>Solution</b>	Set the compression type for the image file to [None] and save the file again in CapturePerfect 3.0.

---

## Scanning Results Are Not as Expected

If there is a problem with the scanning result (e.g., the scanned image is not clear, or the image is striped or dirty), the probable causes are incorrect ISIS/TWAIN driver settings or a problem with the scanning unit inside the scanner. Scanning results can also become skewed if the ISIS/TWAIN driver has not been installed correctly, or the application in use does not support ISIS/TWAIN driver functions.

---

**Symptoms The scanned image is too dark (or faint).**

**Problem** The [Brightness] setting is not set to an appropriate value.

**Solution** If the image is dark, set a higher [Brightness] setting, or if the image is faint, set a lower [Brightness] setting.  
(See “Software Settings,” on p. 49.)

---

**Symptoms Text or images on the rear side of your document appear in the scanned image.**

**Problem** The [Brightness] setting is too low, or the paper is too thin.

**Solution** Set a higher [Brightness] setting. If the paper is too thin, make a copy of the documents and then scan the copy.

---

**Symptoms Double-sided scanning is not possible.**

**Problem** “Scanning Side” is set to [Simplex].

**Solution** Set “Scanning Side” to [Double-sided].

---

**Symptoms A black margin appears around the scanned document.**

**Problem** A document smaller than the preset paper size has been scanned. Or, the loaded document has shifted out of position.

**Solution** Set “Paper size” to [Auto-detection]. Or, set [Border Removal] to on.

---

**Symptoms The scanned image is skewed.**

**Problem** The document has been fed at an angle. (skew)

**Solution** Use the document guide adapter to prevent document skew, and set [Deskew] to on. (See p. 22.)

---

**Symptoms Lines, smudges, or dirt appear on the scanned image.**

**Problem** CauseThe scanning glass or rollers inside the scanner are dirty.

**Solution** Clean the scanning glass and rollers.  
If lines still appear on the image even after cleaning the scanning glass and rollers, the scanning glass inside the scanner may be scratched. Contact your local authorized Canon dealer or service representative. (See p. 59.)

---

**Symptoms The scanned image is abnormal for certain documents.**

**Problem** Functions such as [Auto-detection], [Deskew], or [Border Removal] were used when scanning documents containing text or photos up to their edges. (The scanner cannot accurately process the edges of documents.)

**Solution** Turn off functions such as [Auto-detection], [Deskew], or [Border Removal] when scanning documents containing text or photos up to their edges. (See “Software Settings,” on p. 49.)

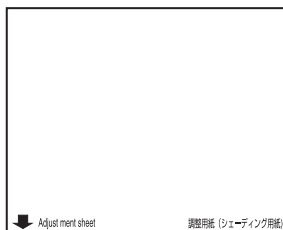
**Symptoms The scanned image is abnormal in some applications.**

**Problem** A function not supported by the application was used.

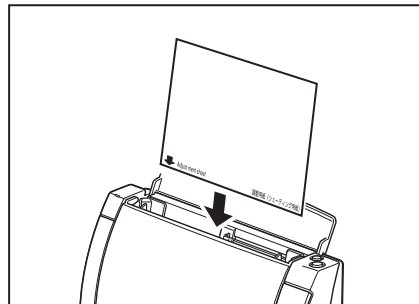
**Solution** Some applications do not support functions such as auto-detection of the paper size. Scanning documents with an application such as this will result in an abnormal scanned image. Try scanning with auto-detection of the paper size set to “off.”

## Adjusting the Scanner

To adjust the scanner, set the supplied Adjustment Sheet (Shading Sheet) in the scanner. Orient the adjusting sheet in the direction indicated by the arrow when setting it in the scanner. After setting the Adjustment Sheet in the scanner, click the Windows [Start] button, and then click [Programs] (All Programs in the case of Windows XP) → [Canon Document Scanner], and then [DR-2050C & 2080C Adjustment Tool], or use the [Scanner Adjustment] function of the ISIS/TWAIN driver. Follow the instructions on the dialog box that appears on the screen to adjust the scanner. Refer to Help for the ISIS/TWAIN driver for information about the ISIS/TWAIN driver [Scanner Adjustment].



Adjustment Sheet  
(Shading Sheet)

**CAUTION**

**Before performing scanner adjustment, be sure to clean the scanning glass (see p. 59). Attempting to perform scanner adjustment while the scanning glass is dirty can cause vertical lines in the scanned image. Note that performing scanner adjustment will cause previous adjustment data to be deleted. Once deleted, adjustment data cannot be recovered.**

---

## 4. Uninstalling Software

---

If the ISIS/TWAIN driver, “Job Registration Tool,” and “CapturePerfect 3.0” are not operating normally, follow the procedure below to uninstall them.

Then, re-install the software from the DR-2050 series setup disc. (See “Step 3. Installing the Software,” in the Easy Start Guide.)



### IMPORTANT

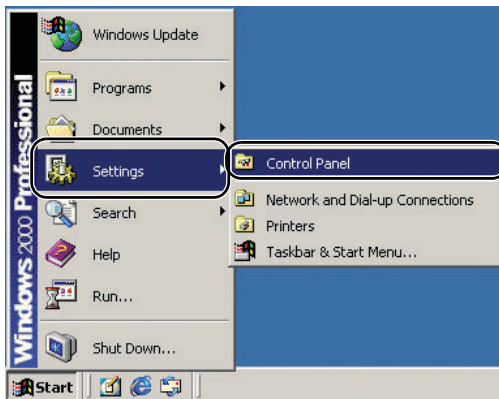
Be sure to log on as an administrator when using Windows 2000 Professional or Windows XP.

1. Click the [Start] button → click [Settings] → [Control Panel].



### Note

For Windows XP, click the [Start] button → click [Control Panel].



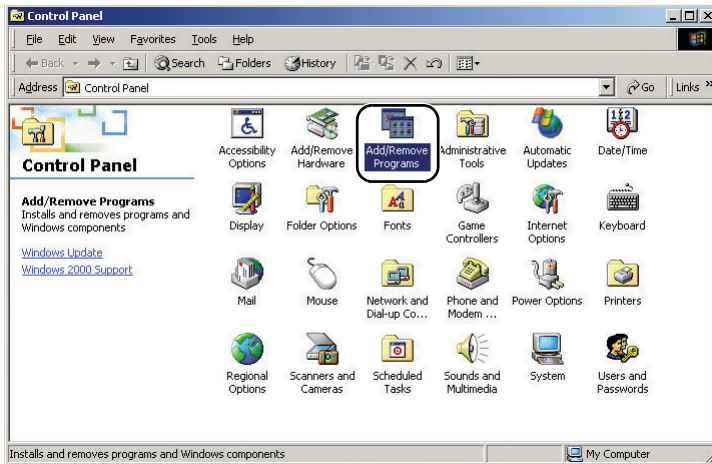
The [Control Panel] window appears.

2. Double-click the [Add/Remove Programs].

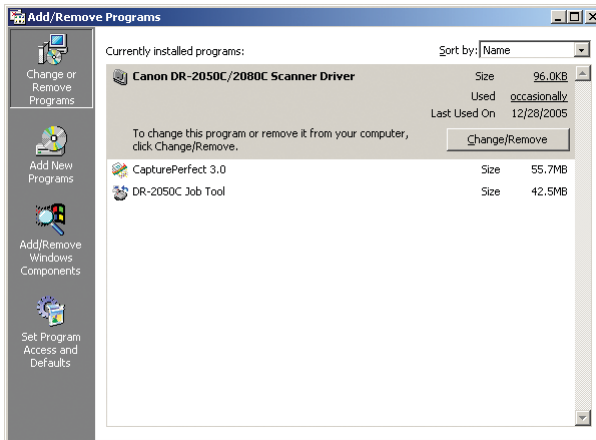


### Note

If you are using Windows XP, double-click the [Add or Remove Programs].



The [Add/Remove Programs Properties] dialog box appears.



### Note

For Windows XP, the [Add or Remove Programs] dialog box appears.

- From the list in the dialog box, select the application you want to delete → click [Change/Remove].

For more information on uninstalling each application, see the following:

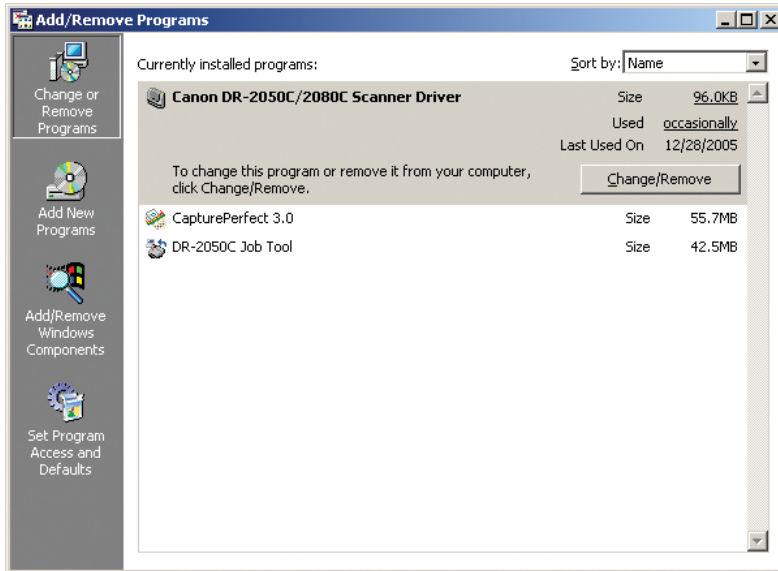
See “Uninstalling the ISIS/TWAIN Driver/Job Registration Tool,” on p. 80.

See “Uninstalling CapturePerfect 3.0,” on p. 82.

---

## Uninstalling the ISIS/TWAIN Driver/Job Registration Tool

1. From the Programs list in the dialog box, select [Canon DR-2050C/2080C Scanner Driver] (or [DR-2050C Job Tool]) → click the [Change/Remove] button.

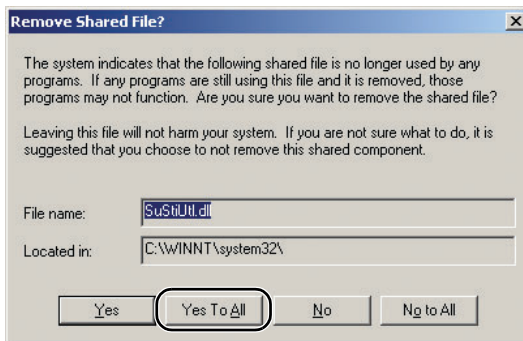


2. The [Confirm File Deletion] screen appears. Click the [Yes] button.



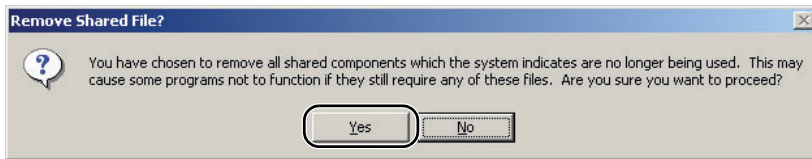
The [Remove Shared File ?] dialog box appears.

3. Click the [Yes To All] button.



A confirmation message appears.

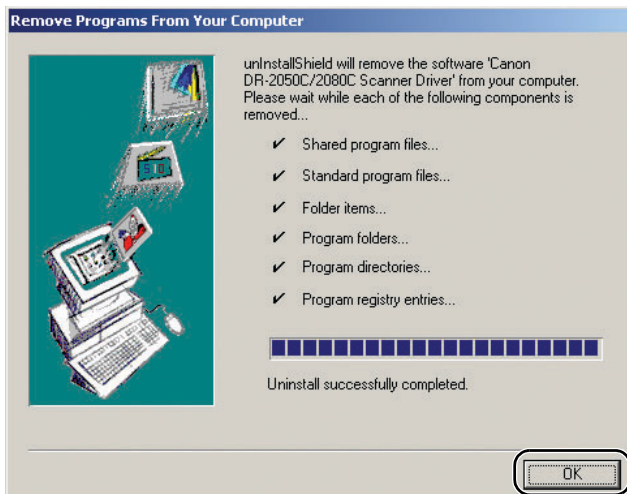
4. Click the [Yes] button to start the uninstallation.



**Note**

All deleted shared files can be reinstalled by installing the software again.

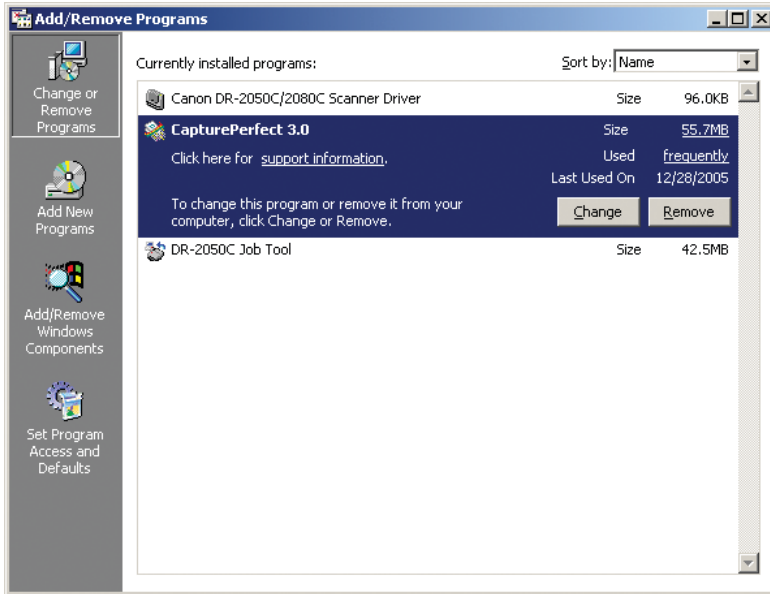
5. After uninstall is complete, click the [OK] button to exit the uninstaller.



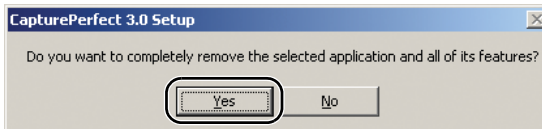
---

## Uninstalling CapturePerfect 3.0

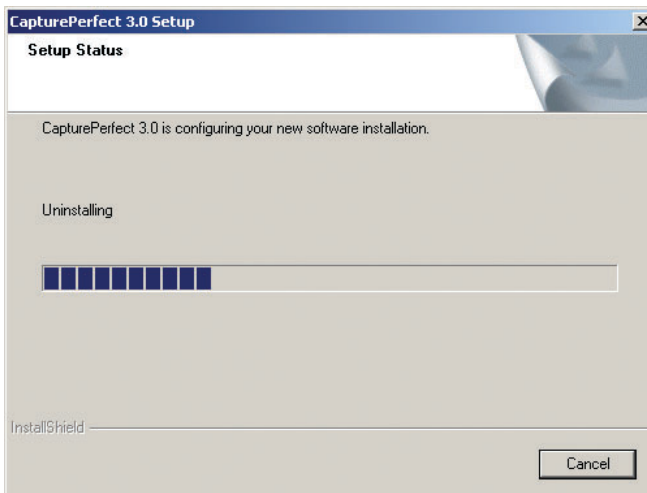
1. Select [CapturePerfect 3.0] from the list in the dialog box → click the [Remove] button.



2. The file delete confirmation screen appears. Click the [Yes] button.

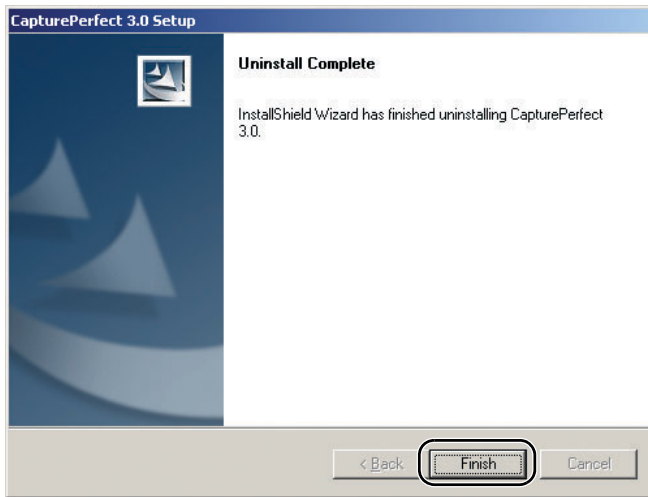


Uninstallation starts.





- 
3. After uninstallation is complete, click the [Finish] button to exit the uninstaller.



---

## 5. Specifications

---

### Specifications

For DR-2050SP Presentation mode specifications, see the *DR-2050SP User's Guide Presentation Mode Edition*.

---

#### Scanner

Type	Desktop sheetfed scanner	
Scanning Document Specifications		
Width:	2.16" to 8.50" (55 mm to 216 mm)	
Length:	(separated documents)	2.75" to 11.6" (70 mm to 297 mm)
	(nonseparated documents)	2.75" to 13.9" (70 mm to 355 mm)
Weight:	(separated documents)	14 to 32 lb bond (0.0024" to 0.0059")
	(nonseparated documents)	52 to 128 g/m <sup>2</sup> (0.06 mm to 0.15 mm)
		11 to 40 lb bond (0.0020" to 0.0079")
		42 to 157 g/m <sup>2</sup> (0.05 mm to 0.20 mm)
Document Feeding Method	Automatic	
Scanning Method	Contact image sensor	
Light Source	LED	
Scanning Side	Simplex/Duplex	
Scanning Modes	Black and white, Text Enhanced, Advanced Text Enhancement II, Error diffusion, 256-level grayscale, 24 bit color	
Scanning Resolution	100 × 100 dpi, 150 × 150 dpi, 200 × 200 dpi	
(Primary Scan Lines ×	240 × 240 dpi, 300 × 300 dpi, 400 × 400 dpi	
Secondary Scan Lines)	600 × 600 dpi	
Scanning Speed	(Conditions: CPU Celeron 733 MHz; 256 MB RAM; Document Size: A4)	
Black and White	Simplex	
	200 × 200 dpi	20 pages/minute
	300 × 300 dpi	11 pages/minute
	Duplex	
	200 × 200 dpi	38 images/minute
	300 × 300 dpi	20 images/minute
256-level Gray	Simplex	
	200 × 200 dpi	20 pages/minute
	300 × 300 dpi	11 pages/minute
	Duplex	
	200 × 200 dpi	38 images/minute
	300 × 300 dpi	20 images/minute

24-bit Color	Simplex 100 × 100 dpi 18 pages/minute 200 × 200 dpi 7 pages/minute Duplex 100 × 100 dpi 36 images/minute 200 × 200 dpi 12 images/minute
Interface	Hi-Speed USB 2.0
Other Functions	Auto document thickness adjustment, folio scan
Dimensions	11.7" × 7.7" × 3.9" (W × H × D) 298 mm × 197 mm × 100 mm (W × H × D)
Dimensions (with trays open)	11.7" × 12.7" × 5.2" (W × H × D) 298 mm × 323 mm × 132 mm (W × H × D)
Weight (Excluding the AC adapter)	Approximately 5.5 lb (2.5 kg) (DR-2050C) Approximately 5.7 lb (2.6 kg) (DR-2050SP)
Power Supply	DC 16 V, 0.8 A (AC adapter used)
Power Consumption	Maximum power: 13 W (DR-2050C) 16 W (DR-2050SP) Low power mode: 4 W Power SW OFF: 0.4 W
Noise	66 dB or less
Operating Environment	Temperature: 10°C to 32.5°C (50°F to 90.5°F) Humidity: 20% to 80% RH

---

## AC Adaptor

AC 100-240 V Model	MG1-3607
Input	AC 100-240 V 50/60 Hz 0.65-0.34 A
Output	DC 16 V 1.8 A
Power Supply	0.5 W max. (separate AC adaptor)
Weight	Approx. 0.7 lb (0.3 kg) (including Power Cord)

---

## Replacement Parts

Roller replacement kit (product code: 7982A001)  
Kit to replace the feed rollers (feed roller and retard roller).

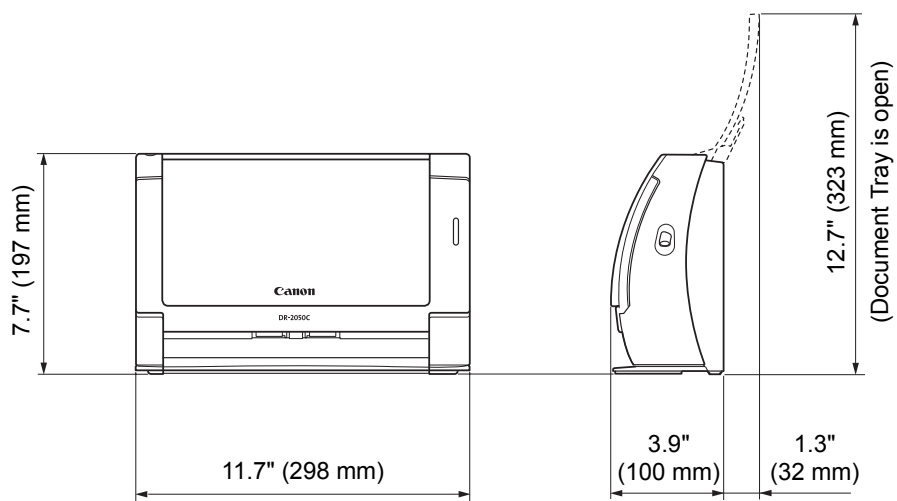
- For details on replacing the rollers, see “Removing and Attaching the Retard Roller,” on p. 68.
- Contact your local authorized Canon dealer for detailed information about replacement parts.

Specifications are subject to change without notice.

---

## External Dimensions

---



# Index

<b>A</b>		<b>J</b>	
AC adapter .....	7	Job Function .....	34
<b>B</b>		Job Registration Tool .....	35, 49
Bypass Mode .....	26	<b>K</b>	
<b>C</b>		Kensington Slot .....	14
CapturePerfect 3.0 .....	17, 28, 75	<b>M</b>	
Cleaning .....	58	Manuals for the Scanner .....	1
Metal Rollers .....	61	Moving the Scanner .....	7
Rollers .....	59	<b>N</b>	
Scanner .....	58	Names and Functions of Parts .....	13
Scanning Glass .....	59	<b>O</b>	
Conventions .....	14	OPEN Knob .....	13
Counter .....	63	operating systems .....	15
<b>D</b>		<b>P</b>	
Disposal .....	10	Page Separation Mode .....	23
Document Eject Opening .....	13	Paper Jam .....	42
Document Feed Opening .....	13	Placing a Documents .....	23
Document Feed Tray .....	13	Power Connector .....	14
Document Guide .....	13	Power Indicator .....	13
Document Guide Adapter .....	13, 22	Power Switch .....	14
Documents .....	20	Preparing the Trays .....	21
DR-2050C Driver .....	17	Document Feed Tray .....	21
<b>E</b>		Document Guide Adapter .....	22
Easy Start Guide .....	1	Feed Extension Plate .....	22
Event Function .....	37	<b>R</b>	
External Dimensions .....	86	Regular Maintenance .....	58
<b>F</b>		Retard Roller .....	60, 68
Features .....	11	Attaching .....	70
Feed Extension Plate .....	13	Removing .....	69
Feed Indicator .....	13	<b>S</b>	
Feed Roller .....	60, 65	Scanning Documents .....	28
Attaching .....	67	CapturePerfect 3.0 .....	28
Removing .....	66	Scanning Hints .....	44
Feed Selection Lever .....	13, 23, 26, 27	Setup Disc .....	17
Folio .....	27	Custom Installation .....	17
Front Unit .....	13	Read the manual .....	17
<b>H</b>		Typical Installation .....	17
Handling .....	8	Software .....	49, 78
<b>I</b>		Settings .....	49
Installation Location .....	6	Uninstalling .....	78
Installation Requirements .....	15	Specifications .....	84
Introduction .....	1	<b>T</b>	
ISIS Driver .....	49	Troubleshooting .....	72
		TWAIN Driver .....	49

---

**U**

Upper Cover .....13

USB Connector .....14

**V**

Ventilation Openings .....14

---

# Memo







**CANON ELECTRONICS INC.**

1248, SHIMOKAGEMORI, CHICHIBU-SHI, SAITAMA 369-1892, JAPAN

**CANON U.S.A. INC.**

ONE CANON PLAZA, LAKE SUCCESS, N.Y. 11042, U.S.A.

**CANON CANADA INC.**

6390 DIXIE ROAD, MISSISSAUGA, ONTARIO L5T 1P7, CANADA

**CANON EUROPA N.V.**

BOVENKERKERWEG 59-61, P.O.BOX 2262, 1180 EG AMSTELVEEN, THE NETHERLANDS

**CANON LATIN AMERICA, INC.**

703 WATERFORD WAY, SUITE 400 MIAMI, FLORIDA 33126, U.S.A.

**CANON AUSTRALIA PTY. LTD.**

1 THOMAS HOLT DRIVE, NORTH RYDE, SYDNEY. N.S.W, 2113. AUSTRALIA

**CANON SINGAPORE PTE. LTD.**

1 HARBOUR FRONT AVENUE #04-01, KEPPEL BAY TOWER, SINGAPORE 098632

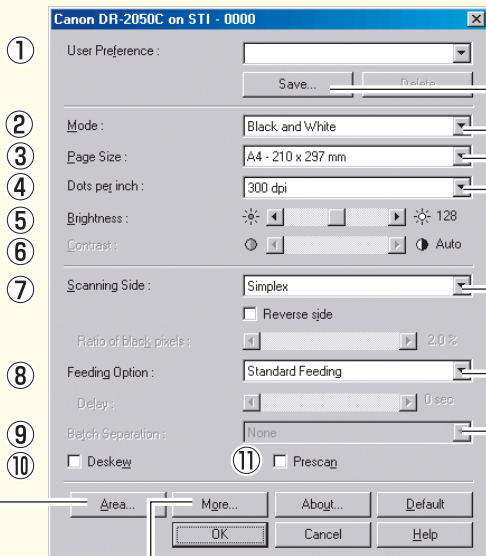
**CANON HONGKONG COMPANY LTD.**

19TH FLOOR, THE METROPOLIS TOWER, 10 METROPOLIS DRIVE, HUNGHOM, KOWLOON, HONG KONG.

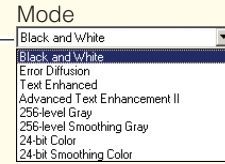
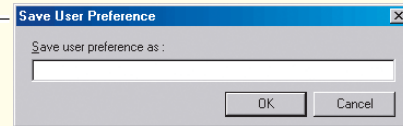
# Canon DR-2050C ISIS Driver Quick Guide

Keep this Quick Guide near the scanner for ready reference.

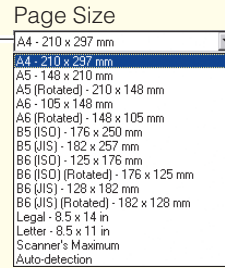
## Basic Setup Dialog Box



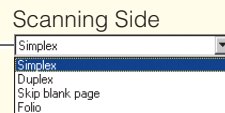
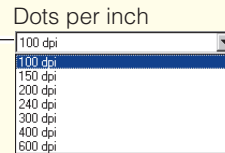
## Save User Preferences



\* [Contrast] is set automatically when Black and White is selected, and [Brightness] and [Contrast] are set automatically when Text Enhanced is selected.



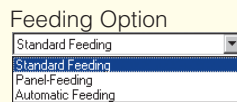
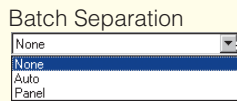
\* The Smoothing mode options are not displayed when [600 dpi] Dots per inch is selected.



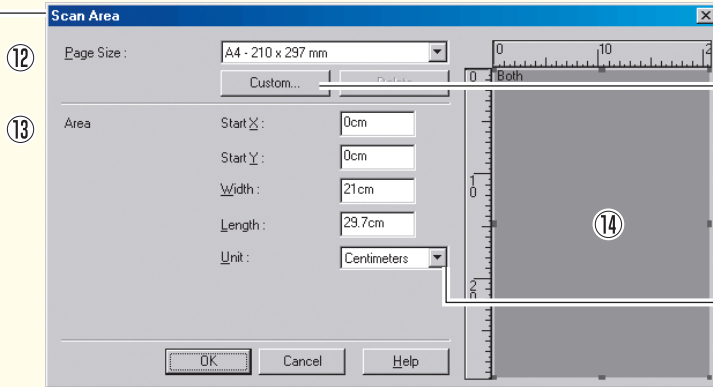
\* Blank pages for skipping are determined using the [Ratio of black pixels] value selected.

\* Batch Separation is not available when the [Standard Feeding] Feeding Option is selected.

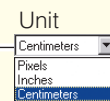
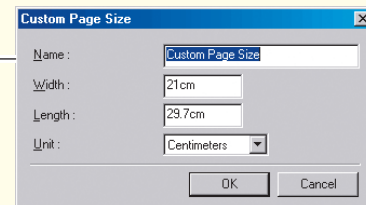
\* The Delay setting is available when the [Automatic Feeding] Feeding Option is selected.



## Scan Area Dialog Box



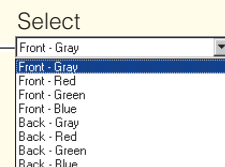
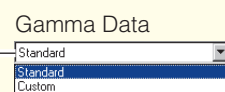
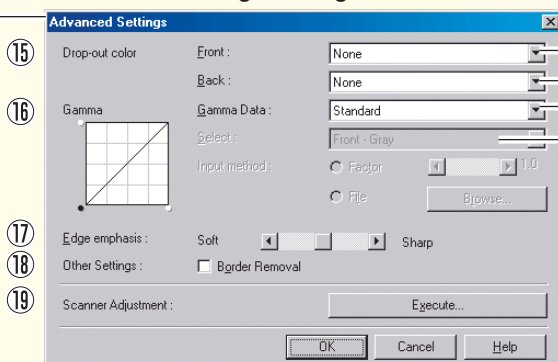
## Custom Page Size registration



\* Area setting is not available when the [Auto-detection] Page Size is selected.

\* Scanning of the specified area may be shifted when Deskew is enabled.

## Advanced Settings Dialog Box



\* When the [Custom] Gamma Data is selected, the [Auto-detection] Page Size, [Skip blank page] Scanning Side, and Deskew options are not available, and [Brightness] and [Contrast] are set automatically.



Scanner Adjustment is a function used to adjust the reference values of the scanner when abnormalities occur within the scanned images. Do not execute when the scanner is functioning properly.

Keep this Quick Guide near the scanner for ready reference.

## Basic Setup Dialog Box

- ① **User Preference**  
Name and save your settings.
  - ☞ Names can consist of up to 32 characters.
- ② **Mode**  
Selects the scanning mode.
  - ☞ [Text Enhanced] and [Advanced Text Enhancement II] process the background of a document so the text is enhanced and easier to read.
  - ☞ The Smoothing Gray/Color options used to smooth images and reduce moiré patterns are available when [400 dpi] Dots per inch or below is selected.
- ③ **Page Size**  
Selects the size of the pages to be scanned.
  - ☞ Selecting [Auto-detection] causes automatic page size detection when scanning.
- ④ **Dots per inch**  
Selects scanning resolution.
- ⑤ **Brightness**  
Adjusts brightness of scanned images.  
[Brightness] is set automatically when the Text Enhanced mode is selected.
- ⑥ **Contrast**  
Adjusts contrast of scanned images.  
[Contrast] is set automatically when the Black and White or Text Enhanced mode is selected.
- ⑦ **Scanning Side**  
Specifies the side of the document to scan.
  - ☞ When [Skip blank page] is selected, images are skipped if they are determined blank based on the [Ratio of black pixels] value.
  - ☞ When [Folio] is selected, both sides of a document are scanned, and the images displayed are combined into one image. For details, refer to the user's guide.
  - ☞ When the [Reverse side] check box is selected, a mirror image of the scanned document is displayed.
  - ☞ [Ratio of black pixels] specifies the ratio of black areas (0 to 20%) when skipping blank pages.
- ⑧ **Feeding Option**  
Selects the document feeding method.
  - ☞ [Standard Feeding] scans loaded documents after starting scanning from the application program.
  - ☞ [Panel-Feeding] scans loaded documents after pressing the scanner's scan button.
  - ☞ [Automatic Feeding] starts scanning whenever the scanner detects a loaded document.
- ⑨ **Batch Separation**  
This setting is enabled when the [Panel-Feeding] or [Automatic Feeding] Feeding Option is selected. Documents can be scanned as separate batches.
  - ☞ When [Auto] is selected, batch separation is performed when scanning with [Panel-Feeding] or [Automatic Feeding] starts.
  - ☞ When [Panel] is selected, batch separation is performed when the batch separation button in the Scan Panel is clicked.
- ⑩ **Deskew**  
When a document page feeds at a slant, the scanned image is straightened.
- ⑪ **Prescan**  
When scanning starts, a page of the document is scanned and its image is displayed in the Prescan window.

## Scan Area Dialog Box

- ⑫ **Page Size**  
Selects the size of the pages to be scanned.
  - ☞ Click [Custom] to register a non-standard document size as a custom page size.
- ⑬ **Area**  
Specifies the area to be scanned.
  - ☞ These settings are disabled when [Auto-detection] is selected for the Page Size.
- ⑭ **Area Window**  
The appearance of this window indicates the current Page Size setting.
  - ☞ The specified scan area can be adjusted by dragging the mouse.

## Advanced Settings Dialog Box

- ⑮ **Drop-out color**  
Enabled for all scanning modes except [24-bit Color], this function selects skipping (drop-out) of red, green, or blue or enhancement of red when scanning the front or back of documents.
- ⑯ **Gamma**  
To alter the standard gamma curve, select [Custom] Gamma Data and change the gamma curve. For details on this setting, click the Help button.
- ⑰ **Edge emphasis**  
Enhances contours in scanned images.
- ⑱ **Border Removal**  
Removes the black border that may be created around scanned images.
- ⑲ **Scanner Adjustment**  
Scanner Adjustment is a function used to adjust the reference values of the scanner when abnormalities occur within the scanned images, and normal maintenance does not remedy the problem. For details on Scanner Adjustment, refer to "Adjusting the Scanner" (see P.75) in the user's guide.

---

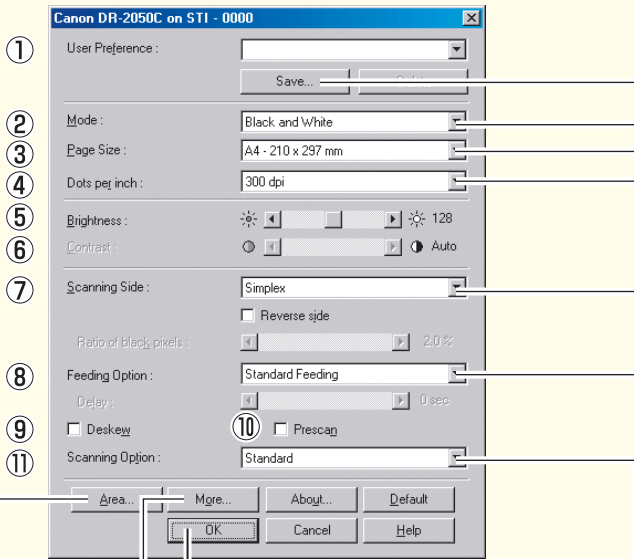
This Quick Guide describes the dialog boxes displayed by CapturePerfect. Depending on your application program, the basic setup dialog box may not be displayed. In this case, the Advanced Settings dialog box, which includes some of the functions in the basic setup dialog box, is displayed. Click the Help button for details.

---

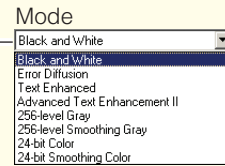
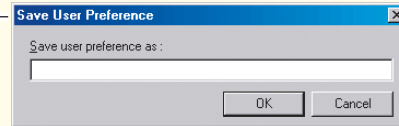
# Canon DR-2050C TWAIN Driver Quick Guide

Keep this Quick Guide near the scanner for ready reference.

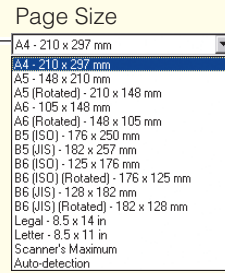
## Basic Setup Dialog Box



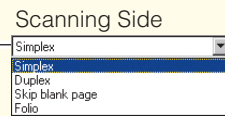
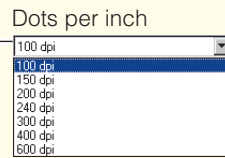
## Save User Preferences



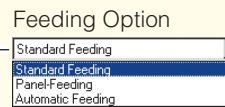
\* [Contrast] is set automatically when Black and White is selected, and [Brightness] and [Contrast] are set automatically when Text Enhanced is selected.



\* The Smoothing mode options are not displayed when [600 dpi] Dots per inch is selected.

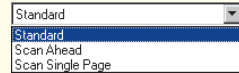


\* Blank pages for skipping are determined using the [Ratio of black pixels] value selected.



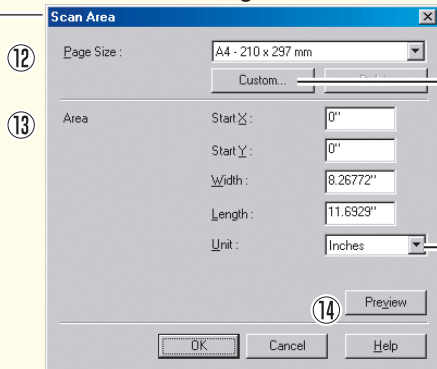
\* The Delay setting is available when the [Automatic Feeding] Feeding Option is selected.

## Scanning Option

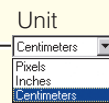
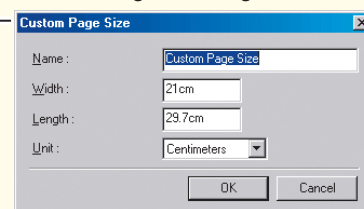


If an application program executes scanning directly from the basic setup dialog box, the [Scan] button is displayed instead of the [OK] button, and the [Area window] is displayed in the Scan Area dialog box.

## Scan Area Dialog Box

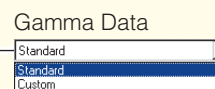
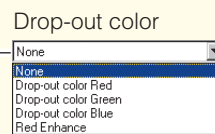
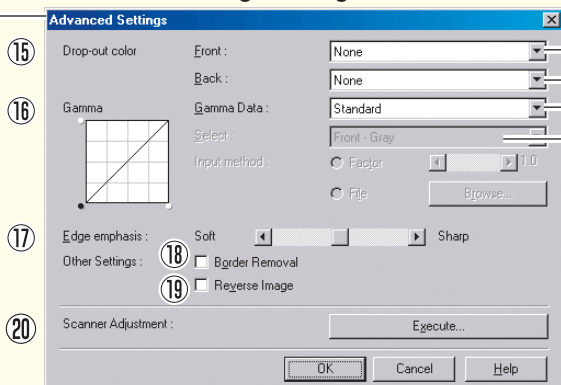


## Custom Page Size registration



\* Area setting is not available when the [Auto-detection] Page Size is selected.  
 \* Scanning of the specified area may be shifted when Deskew is enabled.

## Advanced Settings Dialog Box



\* When the [Custom] Gamma Data is selected, the [Auto-detection] Page Size, [Skip blank page] Scanning Side, and Deskew options are not available, and [Brightness] and [Contrast] are set automatically.



**!** Scanner Adjustment is a function used to adjust the reference values of the scanner when abnormalities occur within the scanned images. Do not execute when the scanner is functioning properly.

Keep this Quick Guide near the scanner for ready reference.

## Basic Setup Dialog Box

- ① **User Preference**  
Name and save your settings.
- ② **Mode**  
Selects the scanning mode.
  - ☞ [Text Enhanced] and [Advanced Text Enhancement II] process the background of a document so the text is enhanced and easier to read.
  - ☞ The Smoothing Gray/Color options used to smooth images and reduce moiré patterns are available when [400 dpi] Dots per inch or below is selected.
- ③ **Page Size**  
Selects the size of the pages to be scanned.
  - ☞ Selecting [Auto-detection] causes automatic page size detection when scanning.
- ④ **Dots per inch**  
Selects scanning resolution.
- ⑤ **Brightness**  
Adjusts brightness of scanned images.  
[Brightness] is set automatically when the Text Enhanced mode is selected.
- ⑥ **Contrast**  
Adjusts contrast of scanned images.  
[Contrast] is set automatically when the Black and White or Text Enhanced mode is selected.
- ⑦ **Scanning Side**  
Specifies the side of the document to scan.
  - ☞ When [Skip blank page] is selected, images are skipped if they are determined blank based on the [Ratio of black pixels] value.
  - ☞ When [Folio] is selected, both sides of a document are scanned, and the images displayed are combined into one image. For details, refer to the user's guide.
  - ☞ When the [Reverse side] check box is selected, the mirror image of the scanned document is displayed.
  - ☞ [Ratio of black pixels] specifies the ratio of black areas (0 to 20%) when skipping blank pages.
- ⑧ **Feeding Option**  
Selects the document feeding method.
  - ☞ [Standard Feeding] scans all loaded documents when scanning is started from the application program.
  - ☞ [Panel-Feeding] scans all loaded documents when scanning is started by the scanner's scan button.
  - ☞ [Automatic Feeding] starts scanning when the scanner detects a loaded document.
- ⑨ **Deskew**  
When a document page feeds at a slant, the scanned image is straightened.
- ⑩ **Prescan**  
When scanning starts, a page of the document is scanned and its image is displayed in the Prescan window.
- ⑪ **Scanning Option**  
Specifies operation during scanning.
  - ☞ [Standard]:  
after one page has been scanned and ejected, the next page is scanned.
  - ☞ [Scan Ahead]:  
scans document pages continuously.
  - ☞ [Scan Single Page]:  
Scanning Side is set and fixed at [Simplex], and only one page is scanned.

## Scan Area Dialog Box

- ⑫ **Page Size**  
Selects the size of the pages to be scanned.
  - ☞ Click [Custom] to register a non-standard document size as a custom page size.
- ⑬ **Area**  
Specifies the area to be scanned.
  - ☞ These settings are disabled when [Auto-detection] is selected for the Page Size.
- ⑭ **Preview**  
When [Prescan] is selected, click this button to display a preview image in the Prescan window after a page of the document is scanned.

## Advanced Settings Dialog Box

- ⑮ **Drop-out color**  
Enabled for all scanning modes except [24-bit Color], this function selects skipping (drop-out) of red, green, or blue or enhancement of red when scanning the front or back of documents.
- ⑯ **Gamma**  
To alter the standard gamma curve, select [Custom] Gamma Data and change the gamma curve. For details on this setting, click the Help button.
- ⑰ **Edge emphasis**  
Enhances contours in scanned images.
- ⑱ **Border Removal**  
Removes the black border that may be created around scanned images.
- ⑲ **Reverse Image**  
When the [Black and White], [Error Diffusion], or [Text Enhanced] mode is selected, black and white are reversed in the scanned image.
- ⑳ **Scanner Adjustment**  
Scanner Adjustment is a function used to adjust the reference values of the scanner when abnormalities occur within the scanned images, and normal maintenance does not remedy the problem. For details on Scanner Adjustment, refer to "Adjusting the Scanner" (see P.75) in the user's guide.

---

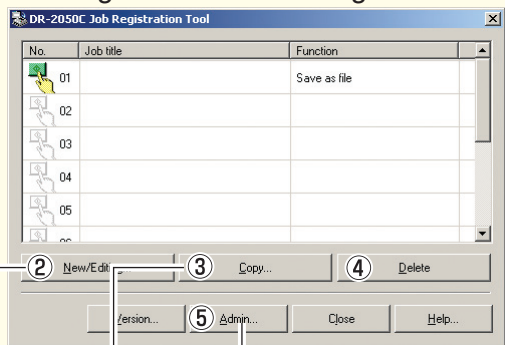
This Quick Guide describes the TWAIN driver settings.  
Click the Help button for details.

---

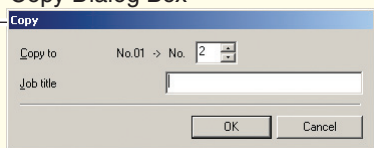
# Canon DR-2050C Job Registration Tool Quick Guide

Keep this Quick Guide near the scanner for ready reference.

## Job Registration Tool Dialog Box



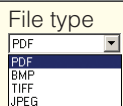
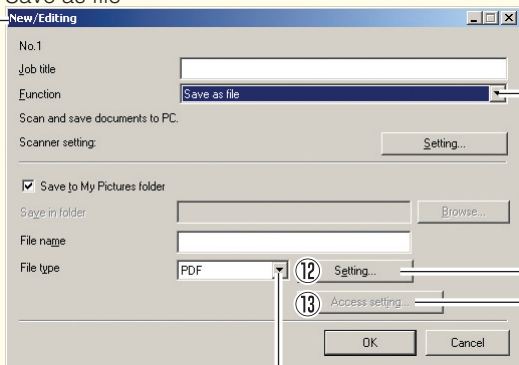
## Copy Dialog Box



## New/Editing Dialog Box

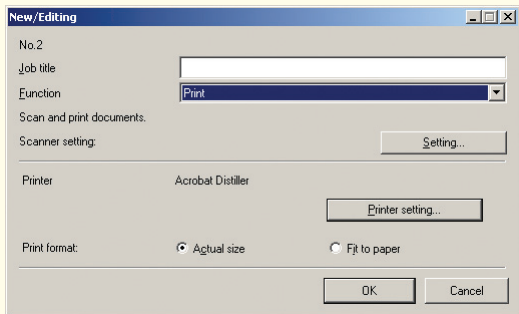
Dialog box contents will differ depending on the selected function.

Save as file

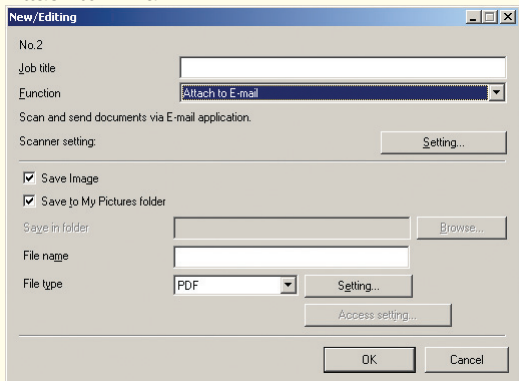


\* The [Setting] button is enabled when [PDF] or [TIFF] is selected.

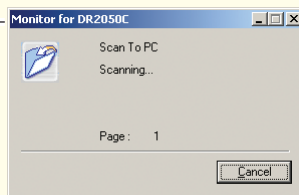
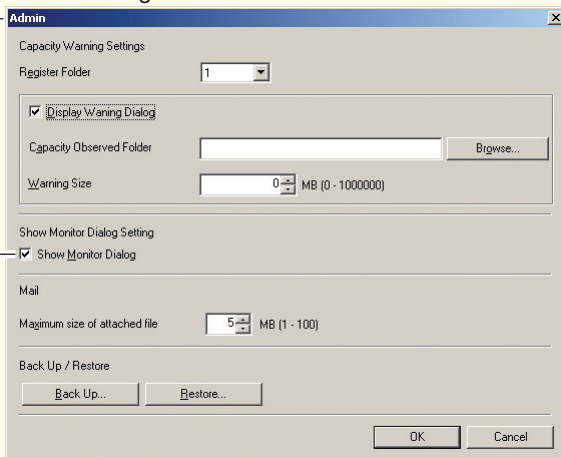
## Print



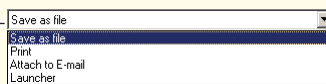
## Attach to E-mai



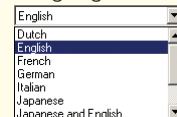
## Admin Dialog Box



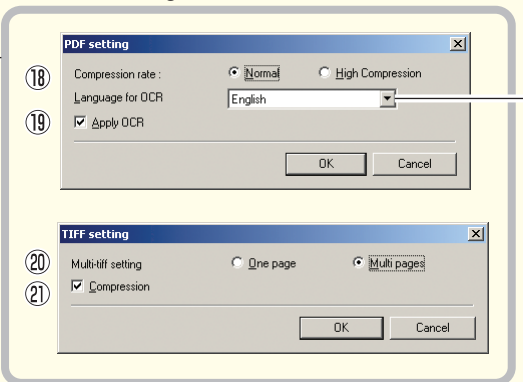
## Function



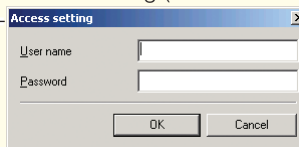
## Language for OCR



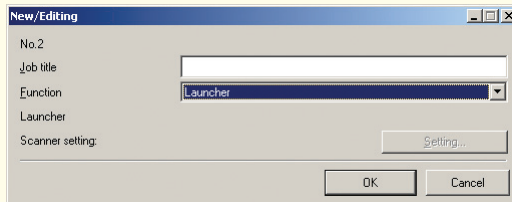
## PDF/TIFF Settings



## Access setting (Windows 2000/XP)



## Launcher



# Canon DR-2050C Job Registration Tool Quick Guide

Keep this Quick Guide near the scanner for ready reference.

## Job Registration Tool Dialog Box

- ① **Job list**  
Shows the registered jobs.  
☞ The job for the icon (📄) that is colored is executed when the scan button is pressed.
- ② **[New/Editing] button**  
Opens the New/Editing dialog box.
- ③ **[Copy] button**  
Copies a registered job to another Job No.
- ④ **[Delete] button**  
Deletes the selected job from the Job list.
- ⑤ **[Admin] button**  
Opens the Admin dialog box.

## New/Editing Dialog Box

- ⑥ **Job title**  
Enter the job title to appear on the display panel.
- ⑦ **Function**  
Selects the function assigned to the Scan button.  
☞ The contents of the Editing dialog box are determined by the selected function.
- ⑧ **Scanner setting**  
Opens the TWAIN driver's basic setting dialog box to configure the scanner.
- ⑨ **Save to My Pictures folder**  
Saves scanned images in the My Pictures folder in My Documents.  
☞ When this check box is not checked, you can specify the destination folder for saving images.
- ⑩ **File name**  
Specifies the file name.  
☞ Image file names are created by appending a time stamp to the specified file name.
- ⑪ **File type**  
Selects the file format for saved images.  
☞ The [Setting] button is enabled when PDF or TIFF is selected.
- ⑫ **[Setting] button**  
This button is enabled when the PDF or TIFF file type is selected, and opens the PDF or TIFF Setting dialog box.  
☞ The PDF setting dialog box provides [Compression] and [OCR] settings.  
☞ The TIFF setting dialog box provides [Multi-tiff setting] and [Compression] settings.
- ⑬ **[Access setting] button**  
Opens the Access setting dialog box.  
☞ Enter the correct User name and Password to obtain access to a shared network folder.
- ⑭ **Printer**  
Shows the default printer. Printer settings can be changed by clicking the [Printer setting] button.
- ⑮ **Print format**  
Selects the printing size.  
☞ [Actual size] prints at the same size as the document.  
☞ [Fit to paper] resizes scanned images to fit on the printing paper when the images are larger than the paper. When the images are smaller than the paper, they are printed at actual size.
- ⑯ **Save Image**  
Select this check box to save images scanned using "Attach to E-mail".

- ⑰ **Launcher**  
Starts applications set with the Windows event function. See the user's guide for detailed information.

## PDF/TIFF Settings

- ⑱ **Compression rate**  
Selects [Normal] or [High Compression] rate.  
☞ [High Compression] reduces the file's size, but also reduces the image quality slightly.  
☞ [High Compression] is useful for grayscale and color images.
- ⑲ **Language for OCR/Apply OCR**  
Recognizes printed text in a document as characters, and adds text data to the PDF file.  
☞ When the [Apply OCR] check box is selected, recognized text data is saved where the printed text is located in the PDF file.  
☞ When OCR is applied, Deskew is enabled, regardless of the configured settings for the TWAIN driver.
- ⑳ **Multi-tiff setting**  
Selects the saving method for multiple page images.  
☞ [One page] creates one file for one page with the number of TIFF files corresponding to the number of pages.  
☞ [Multi pages] saves the images for all of the pages as one file.
- ㉑ **Compression**  
Compresses image files before saving them.  
☞ Black and white images are compressed as CCITT Group 4 images, while grayscale and color images are compressed as JPEG images.

## Admin Dialog Box

- ㉒ **Capacity Warning Settings**  
Specifies the folder for saved image files, and the capacity of that folder, in advance.  
☞ After specifying the folder and starting to scan, a warning message is displayed when the specified capacity is reached while scanning.
- ㉓ **Register Folder/Display Warning Dialog**  
The [Capacity Observed Folder] and [Warning Size] items are enabled by specifying a [Register Folder] (number) and selecting the [Display Warning Dialog] check box.  
☞ When the capacity warning is displayed, follow the displayed instructions to continue scanning.
- ㉔ **Show Monitor Dialog**  
The Monitor for DR-2050C dialog box appears when the Scan button is pressed, and the scan progress is displayed.
- ㉕ **Maximum size of attached file**  
Specifies a maximum size for image files to be attached to e-mails.
- ㉖ **Job Backup/Restore**  
Backs up and restores registered jobs.  
☞ Backup files can be restored on another DR-2050C document scanner.

---

This Quick Guide describes settings for the Job Registration Tool. Click the Help button for details.

---

## Free Manuals Download Website

<http://myh66.com>

<http://usermanuals.us>

<http://www.somanuals.com>

<http://www.4manuals.cc>

<http://www.manual-lib.com>

<http://www.404manual.com>

<http://www.luxmanual.com>

<http://aubethermostatmanual.com>

Golf course search by state

<http://golfingnear.com>

Email search by domain

<http://emailbydomain.com>

Auto manuals search

<http://auto.somanuals.com>

TV manuals search

<http://tv.somanuals.com>