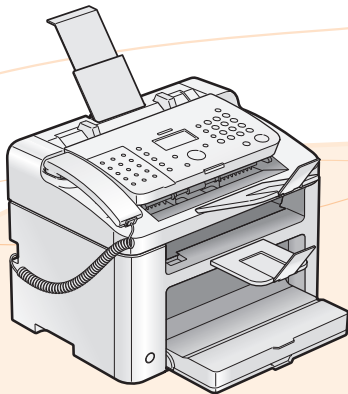




# FAX L Driver Installation Guide



<b>User Software CD-ROM</b> .....	<b>1</b>
Drivers and Software .....	1
Supported Operating Systems .....	1
<b>Installing the FAX L Drivers</b> .....	<b>2</b>
Installing with [Easy Installation] .....	2
Installing with [Custom Installation] .....	7
Installing the FAX L driver in Windows 2000 .....	11
USB cable connection .....	12
Checking the installation results .....	13
<b>How to Use the Online Help</b> .....	<b>14</b>
<b>Appendix</b> .....	<b>15</b>
How to Check the Windows Vista/7 Processor Version .....	15
Uninstalling the Software .....	16
To uninstall the printer/fax driver .....	16
To uninstall the Product Extended Survey Program .....	17

Illustrations and displays used in this manual are which of FAX-L170 unless specified.

# User Software CD-ROM

## Drivers and Software

FAX L Drivers	
Printer driver	You can print from an application using the machine by installing the printer driver on your computer. You can process print data at high speed by compressing the print data using the computer's processing capability.
Fax driver	If you install the fax driver on your computer, you can select "Print" from an application, select the Canon fax driver as a printer, and specify the output destination and options. The fax driver converts the data into an image that conforms to standard fax protocols so that the data can be printed or saved using the recipient's fax machine.



### NOTE

#### The newest software:

Depending on the operating system you are using, some functions of the driver software included in the CD-ROM may not be usable. The newest software is posted on the Canon web site. Please verify the operating environment etc. and download the appropriate software if required.

## Supported Operating Systems

○ : Available

— : Not Available

	Windows 2000/XP	Windows Vista/7
Printer driver	○	○
Fax driver	○	○

# Installing the FAX L Drivers

---

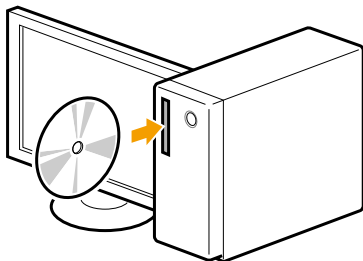
Install the software to use the machine.

## IMPORTANT

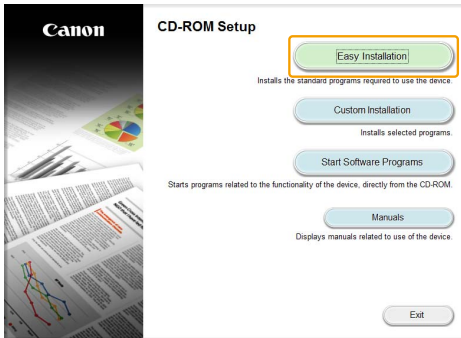
- **If you are using a 64-bit operating system**  
The FAX L drivers for 64-bit operating systems may not be supplied depending on your country or region.
- **User rights for logging on to Windows**  
Log on as a user with administrative rights.
- **When installing via USB connection**  
Connect the USB cable after the software installation.  
Make sure that the power of the machine is turned ON when connecting the USB cable.
- **For Windows 2000 users**  
User Software CD-ROM is not compatible with Windows 2000 and installation method is different. See "Installing the FAX L driver in Windows 2000" on p. 11.

## Installing with [Easy Installation]

- 1** Insert the User Software CD-ROM into the slot on your computer.



## 2 Click [Easy Installation].



\* The options to be displayed differ depending on your country or region.

### ? If the above CD-ROM setup screen does not appear:

#### Windows XP

1. From the [Start] menu, select [Run].
2. Enter "D:\MInst.exe", and then click [OK].

#### Windows Vista, 7

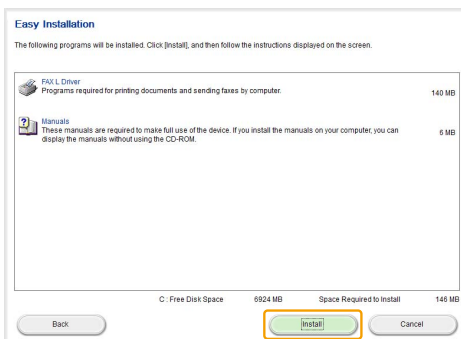
1. Enter "D:\MInst.exe" in [Start Search] or [Search programs and files] under the [Start] menu.
2. Press the [ENTER] key on the keyboard.

\* The CD-ROM drive name is indicated as "D:" in this manual. The CD-ROM drive name may differ depending on the computer you are using.

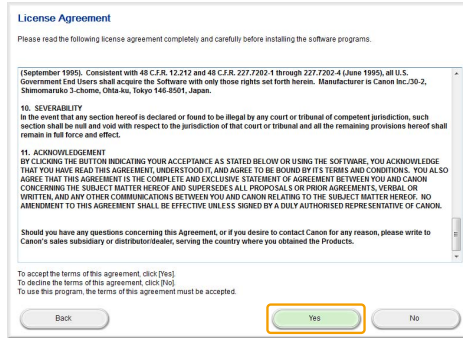
### ? If the language selection screen is displayed before the CD-ROM setup screen appears:

Select the language and then click [Next].

## 3 Click [Install].



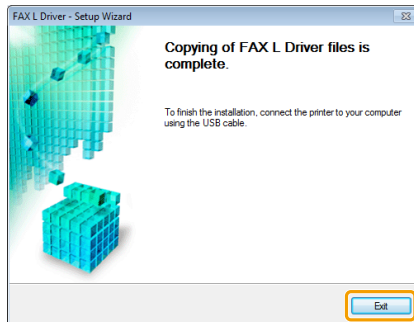
## 4 Read the License Agreement, and then click [Yes].



## 5 Click [Next].



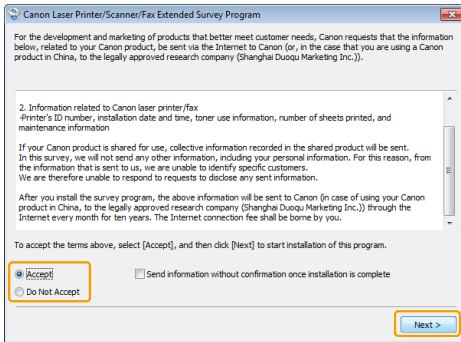
## 6 Click [Exit].



## 7 Follow on-screen instructions to install the manual.

Next, installation of Product Extended Survey Program starts.

## 8 When the following screen appears, read the displayed information, click [Accept] or [Do Not Accept], and then click [Next].



### If you select [Accept]:

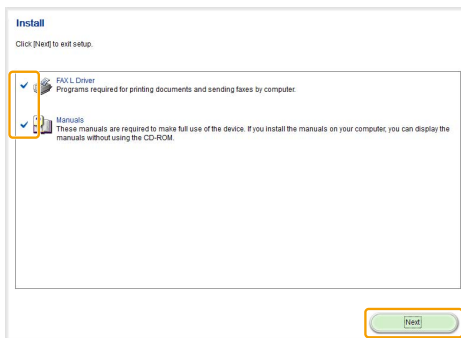
The Product Extended Survey Program (the program to investigate the state of usage) will be installed.

The Product Extended Survey Program is the program to send the information related to the usage of this machine to Canon every month for ten years. Any other information including your personal information is not sent.

You can also uninstall the Product Extended Survey Program.

See "To uninstall the Product Extended Survey Program" on p. 17.

## 9 Confirm that the application is selected [ ] under [Install], and then click [Next].

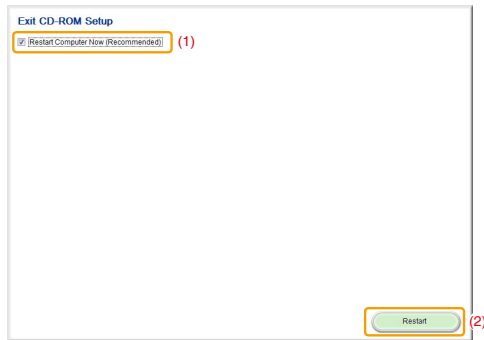


## 10 Restart your computer.

(1) Select the [Restart Computer Now (Recommended)] check box.

(2) Click [Restart].

※ The CD-ROM may be removed once this screen appears.



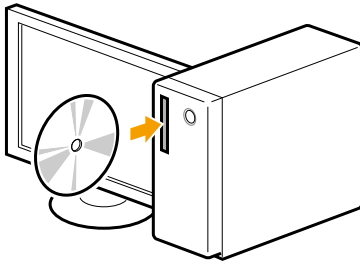
---

Connect the USB cable after restarting your computer.  
See "USB cable connection" on p. 12.

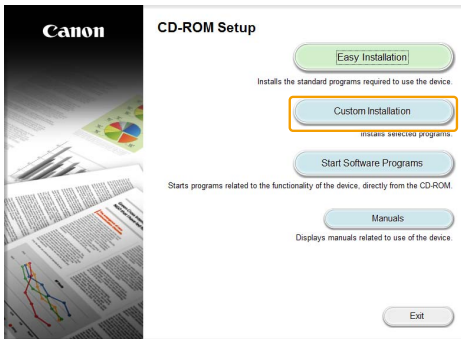
---

# Installing with [Custom Installation]

- 1 Insert the User Software CD-ROM into the slot on your computer.



- 2 Click [Custom Installation].



※The options to be displayed differ depending on your country or region.

## If the above CD-ROM setup screen does not appear:

### Windows XP

1. From the [Start] menu, select [Run].
2. Enter "D:\MInst.exe", and then click [OK].

### Windows Vista, 7

1. Enter "D:\MInst.exe" in [Start Search] or [Search programs and files] under the [Start] menu.
2. Press the [ENTER] key on the keyboard.

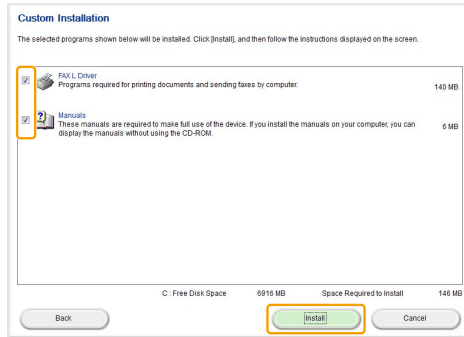
\* The CD-ROM drive name is indicated as "D:" in this manual. The CD-ROM drive name may differ depending on the computer you are using.

## If the language selection screen is displayed before the CD-ROM setup screen appears:

Select the language and then click [Next].



### 3 Select the check box next to the application you want to install, and then click [Install].

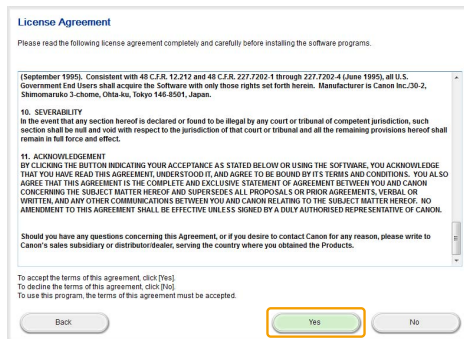


✂The options to be displayed differ depending on your country or region.

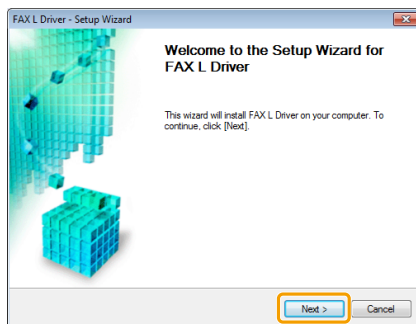
✂To install the e-Manual, select the [Manuals] check box.

\* If [Manuals] does not appear, install the e-Manual from the Multi-lingual User Manual CD supplied with the machine.

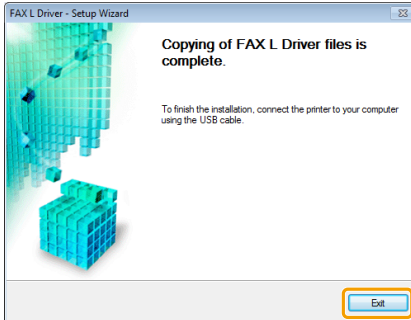
### 4 Read the License Agreement, and then click [Yes].



### 5 Click [Next].



## 6 Click [Exit].



## 7 If you selected Manuals in step 3, installation of the manuals starts.

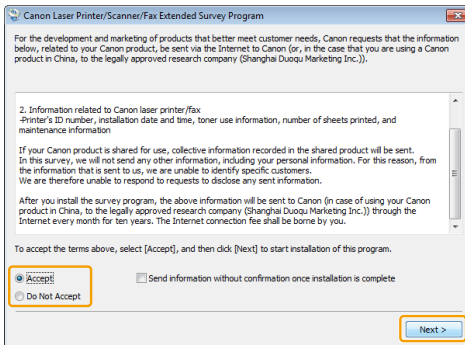
Follow on-screen instructions to install the manual.

---

Next, installation of Product Extended Survey Program starts.

---

## 8 When the following screen appears, read the displayed information, click [Accept] or [Do Not Accept], and then click [Next].



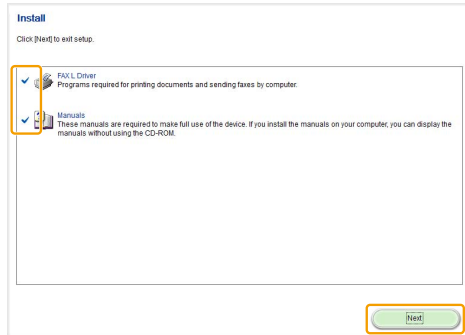
### ? If you select [Accept]:

The Product Extended Survey Program (the program to investigate the state of usage) will be installed.

The Product Extended Survey Program is the program to send the information related to the usage of this machine to Canon every month for ten years. Any other information including your personal information is not sent.

You can also uninstall the Product Extended Survey Program.  
See "To uninstall the Product Extended Survey Program" on p. 17.

## 9 Confirm that the applications are selected [ ✓ ] under [Install], and then click [Next].



※The options to be displayed differ depending on your country or region.

## 10 Restart your computer.

(1) Select the [Restart Computer Now (Recommended)] check box.

(2) Click [Restart].

※ The CD-ROM may be removed once this screen appears.



---

Connect the USB cable after restarting your computer.  
See "USB cable connection" on p. 12.

---

## Installing the FAX L driver in Windows 2000

- 1** Insert the User Software CD-ROM into the slot on your computer.
- 2** Click [My computer], right-click the CD-ROM icon, and then select [Open] from the pop-up menu.
- 3** Open [DRIVERS] -> [XXXXXX]\* -> [32bit], and then double-click [Setup.exe].  
\* Select your language for [XXXXXX].
- 4** Click [Next].
- 5** Click [Exit].

---

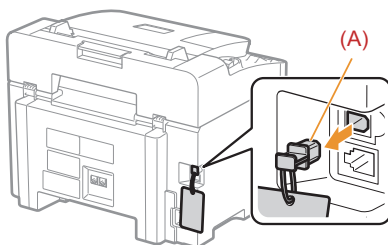
Connect the USB cable after restarting your computer.  
See "USB cable connection" on p. 12.

---

## USB cable connection

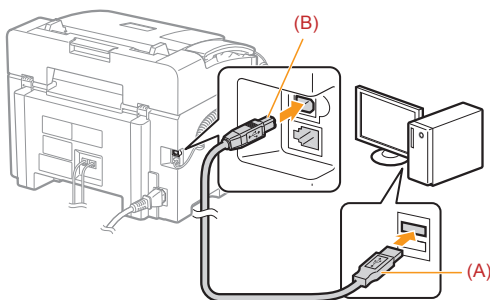
### 1 Remove the cap (A) on the USB port of the machine.

Remove the cap by pulling out the string.



### 2 Connect the USB cable.

- Flat end (A): Connect to the USB port on the computer.
- Square end (B): Connect to the USB port on the machine.



#### If a dialog box is displayed:

Follow the onscreen instructions and complete installation.

---

When installation is complete, check the installation results.  
See "Checking the installation results" on p. 13.

---

## Checking the installation results




Check that the FAX L drivers are installed correctly.

Check if the following icons are displayed for the installed applications.

### NOTE

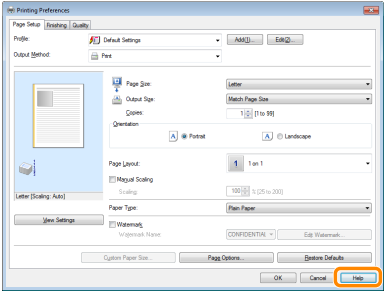
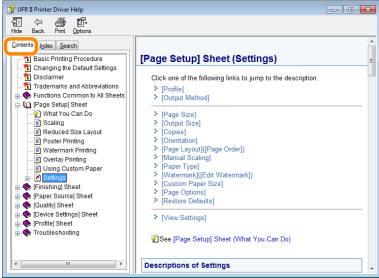
#### **About Icons that Are Displayed:**

Icons for each driver may be displayed separately or only representative icon may be displayed depending on the operating system.

Software	Location	Icon
Printer driver	[Printers and Faxes], [Printers], or [Devices and Printers] folder.	 Canon UFR II LT
Fax driver	[Printers and Faxes], [Printers], or [Devices and Printers] folder.	 Canon (FAX)
e-Manual	Desktop	 Manual_eng

# How to Use the Online Help

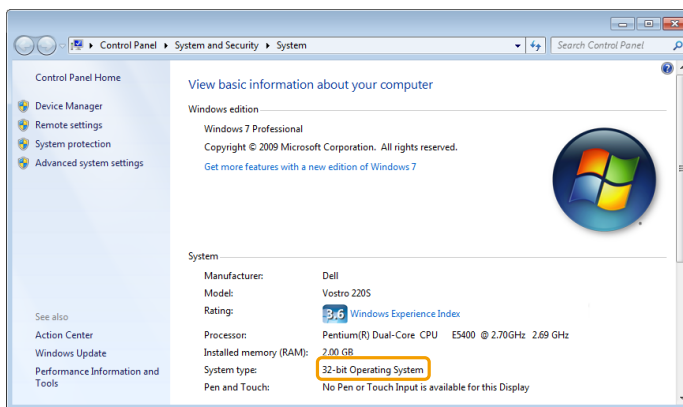
In the Online Help, all the functions of the driver software and information about options are included. If you want to know descriptions of the functions and settings immediately when using the driver software, make use of the Online Help.

<p>How to display the Help screen</p>	<ol style="list-style-type: none"> <li>(1) Select [File] -&gt; [Print] from the menu bar in the application.</li> <li>(2) Select the printer in [Select Printer] or [Name] in the [Print] dialog box.</li> <li>(3) Click [Preferences] or [Properties].</li> <li>(4) Click [Help].</li> </ol>	 <p>The screenshot shows the 'Print Properties' dialog box with various settings like Page Size, Output Size, and Paper Type. The 'Help' button at the bottom right is circled in red.</p>
<p>Searching from Contents</p>	<p>Click [Contents] in the Help screen, and then double-click the desired title to display the information.</p>	 <p>The screenshot shows the 'UPR.E Printer Driver Help' window. The 'Contents' pane on the left is expanded to show 'Page Setup Sheet (Settings)', which is highlighted with a red circle. The main pane shows the corresponding settings for 'Page Setup Sheet (Settings)', including links to Profile, Output Method, Output Size, Orientation, Copies, Page Layout, Paper Type, Watermark, Custom Paper Size, Page Options, and Restore Defaults.</p>

# Appendix

## How to Check the Windows Vista/7 Processor Version

- 1** Select [Control Panel] from the [Start] menu.
- 2** Display [System].
  - **Windows Vista/Windows 7**  
Click [System and Maintenance] or [System and Security] → [System].
- 3** Check the processor version.
  - **For 32-bit version**  
[32-bit Operating System] is displayed.
  - **For 64-bit version**  
[64-bit Operating System] is displayed.





# Uninstalling the Software

If you do not need the printer driver, fax driver, or Product Extended Survey Program, you can uninstall them with the following procedure.

## IMPORTANT

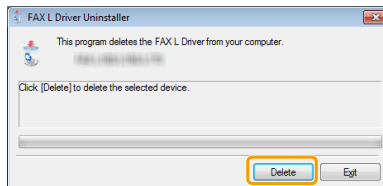
Confirm the following before uninstalling the software:

- You must have administrative privileges on the computer.
- You should have the installation software (in case you want to re-install the drivers).
- You have closed all applications on your computer.

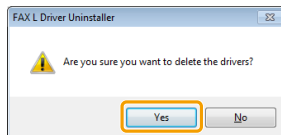
## *To uninstall the printer/fax driver*

**1** From the [Start] menu, click [(All) Programs] -> [Canon] -> [FAX L100 L150 L170] -> [Uninstall Drivers].

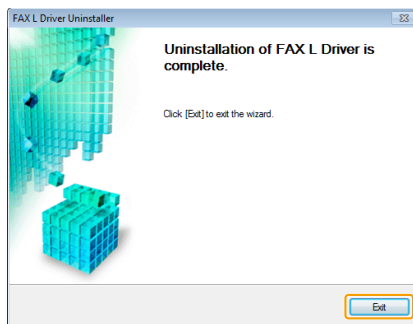
**2** Click [Delete].



**3** Click [Yes] to confirm the uninstallation.



**4** Click [Exit] (or [Restart]).



## ***To uninstall the Product Extended Survey Program***

### **1** Open [Programs and Features].

#### **Windows XP**

From the [Start] menu, select [Control Panel], and then double-click [Add or Remove Programs].

#### **Windows Vista/7**

1. From the [Start] menu, select [Control Panel].
2. Click [Uninstall a program] or double-click [Programs and Features].

### **2** Select [Canon Laser Printer/Scanner/Fax Extended Survey Program], and then click [Uninstall].

### **3** Follow the on-screen instructions.



## Free Manuals Download Website

<http://myh66.com>

<http://usermanuals.us>

<http://www.somanuals.com>

<http://www.4manuals.cc>

<http://www.manual-lib.com>

<http://www.404manual.com>

<http://www.luxmanual.com>

<http://aubethermostatmanual.com>

Golf course search by state

<http://golfingnear.com>

Email search by domain

<http://emailbydomain.com>

Auto manuals search

<http://auto.somanuals.com>

TV manuals search

<http://tv.somanuals.com>