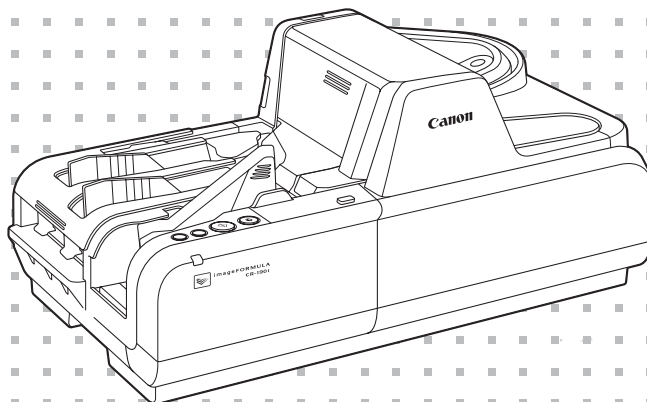


**Canon**

 **imageFORMULA**

**CR-135i**  
**CR-190i**

# Instructions



Please read this manual before operating this scanner.

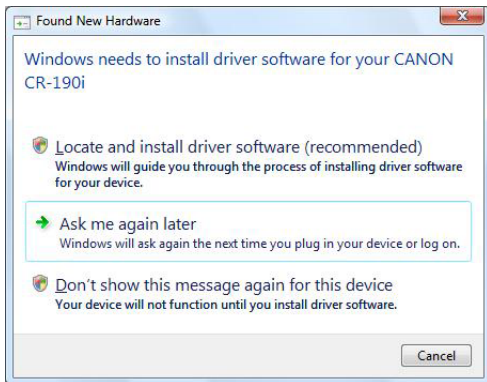
## Connecting the Scanner to a Computer

---

Connect the CR-135i/CR-190i to a computer as follows. Make sure to install the software before connecting the scanner to a computer.

- If you connect the computer and turn ON the CR-135i/CR-190i before installing the software, the following wizard screen appears. If this happens, click [Cancel], turn OFF the CR-135i/CR-190i, and then install the software.

The following wizard screen is an example in Windows Vista. When a similar wizard screen appears in Windows XP/7, click [Cancel].



Wizard Screen (Windows Vista)

### 1 Install the software

Install the Scanning Utility for CR-135i/CR-190i in the setup disc provided with the CR-135i/CR-190i. (See "Installing the Software," on p. 19.)

### 2 Connect the scanner to a computer

Connect the CR-135i/CR-190i and the computer with a USB. (See "Connecting the Scanner to a Computer," on p. 20.)

### 3 Turn ON the power

Turn ON the power of the CR-135i/CR-190i. (See "Turning ON the Power," on p. 21.)

### 4 Automatically installing the device driver

The device driver is installed automatically when Windows recognizes the CR-135i/CR-190i as new hardware. (See p. 22.)

## **READ CAREFULLY BEFORE OPENING THE SEALED DISK PACKAGE**

### **CANON SOFTWARE LICENSE AGREEMENT IMPORTANT-READ THIS AGREEMENT BEFORE OPENING THE SEALED DISK PACKAGE! BY OPENING THE SEALED DISK PACKAGE, YOU ARE DEEMED TO AGREE TO BE BOUND BY THIS AGREEMENT.**

This legal document is a license agreement between you and CANON ELECTRONICS INC. ("Canon"). BY OPENING THE SEALED DISK PACKAGE, YOU ARE DEEMED TO AGREE TO BE BOUND BY THE TERMS OF THIS AGREEMENT. IF YOU DO NOT AGREE TO THE TERMS OF THIS AGREEMENT, DO NOT OPEN THE SEALED DISK PACKAGE AND PROMPTLY RETURN THE CANON SCANNER, THE DISK PACKAGE CONTAINING SCANNER DRIVER SOFTWARE PROGRAMS AND/OR SCANNER UTILITY SOFTWARE PROGRAM PROPRIETARY TO CANON OR ITS LICENSOR (THE "SOFTWARE"), AND THE ACCOMPANYING DOCUMENTATION AND OTHER ITEMS TO THE PLACE WHERE YOU OBTAINED THEM FOR A REFUND BEFORE THEY ARE USED OR OPENED OR UNPACKED. In consideration of the right to use the SOFTWARE, you agree to abide by the terms and conditions of this Agreement.

**1. GRANT OF LICENSE:** Canon grants you the personal, non-exclusive right to use the SOFTWARE only on a single computer. You may physically transfer the SOFTWARE from one computer to another provided that the SOFTWARE is used on only one computer at any time.

You shall not assign, sublicense, sell, rent, lease, loan, convey or transfer to any third party, or send or bring the SOFTWARE out of the country where you originally obtain it to other countries without required authorization of applicable governments, or copy, duplicate, translate or convert to another programming language the SOFTWARE or accompanying documentation, except as expressly provided herein.

Except as expressly permitted under the applicable law, you shall not alter, modify, disassemble, decompile or otherwise reverse engineer the SOFTWARE or accompanying documentation and you also shall not have any third party do so.

**2. BACK-UP COPY:** You may make one copy of the SOFTWARE solely for a back-up purpose or copy the SOFTWARE onto the permanent storage device (e.g. a hard disk) of your computer and retain the original for a back-up purpose. Except as expressly permitted under the applicable law, any other copying of the SOFTWARE is a violation of this Agreement. You must reproduce and include the copyright notice on the back-up copy.

**3. SUPPORT AND UPDATE:** Canon, Canon's affiliate, their distributor or dealer is not responsible for maintaining or helping you to use the SOFTWARE. No updates, fixes or support will be made available for the SOFTWARE.

**4. LIMITED WARRANTY AND DISCLAIMER OF INDEMNITY:** Canon, Canon's affiliate, their distributor or dealer will not guarantee uninterrupted service, or absence or correction of errors. Therefore, the SOFTWARE is licensed on an "AS IS" basis without warranty of any kind. The diskette on which the SOFTWARE is recorded is warranted against defective material or workmanship under normal use for a period of ninety (90) days from the date you purchased the same as evidenced by a receipt or otherwise. The limited warranty does not apply if the failure of the diskette resulted from accident, abuse or misapplication of the SOFTWARE and shall not extend to anyone other than the original user of the SOFTWARE. CANON, CANON'S AFFILIATE, THEIR DISTRIBUTOR OR DEALER DISCLAIMS ALL IMPLIED WARRANTIES, INCLUDING ANY WARRANTY OF MERCHANTABILITY OR FITNESS FOR A PARTICULAR PURPOSE, WITH RESPECT TO THE SOFTWARE OR ACCOMPANYING DOCUMENTATION.

NEITHER CANON, CANON'S AFFILIATE, THEIR DISTRIBUTOR NOR DEALER IS LIABLE FOR ANY LOSS OR DAMAGE INCLUDING CONSEQUENTIAL OR INCIDENTAL LOSS OR DAMAGE SUCH AS LOSS OF PROFITS, EXPENSE OR INCONVENIENCE, WHATSOEVER CAUSED BY OR ARISING OUT OF THE SOFTWARE, ACCOMPANYING DOCUMENTATION OR THE USE THEREOF. CANON, CANON'S AFFILIATE, THEIR DISTRIBUTOR OR DEALER SHALL HAVE NO OBLIGATION TO INDEMNIFY YOU AGAINST ANY CLAIM OR SUIT BROUGHT BY A THIRD PARTY ALLEGING THAT THE SOFTWARE, ACCOMPANYING DOCUMENTATION OR THE USE THEREOF INFRINGES ANY INTELLECTUAL PROPERTY OF SUCH THIRD PARTY.

THE ABOVE IS CANON'S ENTIRE LIABILITY AND YOUR EXCLUSIVE REMEDY IN CONNECTION WITH THE SOFTWARE AND ACCOMPANYING DOCUMENTATION.

**5. TERM:** This Agreement is effective upon opening the sealed disk package and remains in effect until terminated. You may terminate this Agreement by destroying the SOFTWARE and any copy thereof. This Agreement will also terminate if you fail to comply with any of the terms of this Agreement. In addition to Canon enforcing its respective legal rights, you must then promptly destroy the SOFTWARE and any copy thereof.

**6. U.S. GOVERNMENT RESTRICTED RIGHTS NOTICE:** The SOFTWARE is provided with RESTRICTED RIGHTS. Use, duplication or disclosure is subject to restrictions as set forth in either subparagraph (c) (1) (ii) of the Rights in Technical Data and Computer Software clause at DFARs 252.227-7013 or subparagraph (c) (1) and (2) of the Commercial Computer Software Restricted Rights Clause at FAR 52.227-19, as applicable.

**7. SEVERABILITY:** In the event that provision of this Agreement is declared or found to be illegal by any court or tribunal of competent jurisdiction, such provision shall be null and void with respect to the jurisdiction of that court or tribunal and all the remaining provisions of this Agreement shall remain in full force and effect.

**8. ACKNOWLEDGEMENT:** BY OPENING THE SEALED DISK PACKAGE, YOU ACKNOWLEDGE THAT YOU HAVE READ THIS AGREEMENT, UNDERSTOOD IT, AND AGREE TO BE BOUND BY ITS TERMS AND CONDITIONS. YOU ALSO AGREE THAT THIS AGREEMENT IS THE COMPLETE AND EXCLUSIVE STATEMENT OF AGREEMENT BETWEEN YOU AND CANON CONCERNING THE SUBJECT MATTER HEREOF AND SUPERSEDES ALL PROPOSALS OR PRIOR AGREEMENTS, VERBAL OR WRITTEN, AND ANY OTHER COMMUNICATIONS BETWEEN YOU AND CANON RELATING TO THE SUBJECT MATTER HEREOF. NO AMENDMENT TO THIS AGREEMENT SHALL BE EFFECTIVE UNLESS SIGNED BY A DULY AUTHORIZED REPRESENTATIVE OF CANON.

Should you have any questions concerning this Agreement, or if you desire to contact Canon for any reason, please write to Canon's local affiliate.

## FCC REGULATIONS (For 120V model)

Check Reader, Model M111071/M111021

This device complies with Part 15 of the FCC Rules. Operation is subject to the following two conditions:

(1) This device may not cause harmful interference, and (2) this device must accept any interference received, including interference that may cause undesired operation.

**Note:** This equipment has been tested and found to comply with the limits for a Class B digital device, pursuant to Part 15 of the FCC Rules. These limits are designed to provide reasonable protection against harmful interference in a residential installation. This equipment generates, uses, and can radiate radio frequency energy and, if not installed and used in accordance with the instructions, may cause harmful interference to radio communications. However, there is no guarantee that interference will not occur in a particular installation. If this equipment does cause harmful interference to radio or television reception, which can be determined by turning the equipment off and on, the user is encouraged to try to correct the interference by one or more of the following measures:

- Reorient or relocate the receiving antenna.
- Increase the separation between the equipment and receiver.
- Connect the equipment into an outlet on a circuit different from that to which the receiver is connected.
- Consult the dealer or an experienced radio/TV technician for help.

Use of shielded cable is required to comply with class B limits in Subpart B of Part 15 of FCC Rules.

Do not make any changes or modifications to the equipment unless otherwise specified in the manual. If such changes or modifications should be made, you could be required to stop operation of the equipment.

Canon U.S.A. Inc.

One Canon Plaza, Lake Success NY 11042, U.S.A.

Tel. No. (516)328-5000

## RADIO INTERFERENCE REGULATIONS (For 120V models)

This digital apparatus does not exceed the Class B limits for radio noise emissions from digital apparatus as set out in the interference-causing equipment standard entitled "Digital Apparatus", ICES-003 of the Industry Canada.

## RÈGLEMENT SUR LE BROUILLAGE RADIOÉLECTRIQUE (For 120V models)

Cet appareil numérique respecte les limites de bruits radioélectriques applicables aux appareils numériques de Classe B prescrites dans la norme sur le matériel brouilleur: "Appareils Numériques", NMB-003 édictée par l'Industrie Canada.

## International ENERGY STAR® Office Equipment Program



As an ENERGY STAR® Partner, CANON ELECTRONICS INC. has determined that this machine meets the ENERGY STAR® Program guidelines for energy efficiency.

The International ENERGY STAR® Office Equipment Program is an international program that promotes energy saving through the use of computers and other office equipment.

The program backs the development and dissemination of products with functions that effectively reduce energy consumption. It is an open system in which business proprietors can participate voluntarily. The targeted products are office equipment, such as computers, monitors, printers, fax, machine, copiers, and scanners. The standards and logos are uniform among participating nations.

This model doesn't provide "setting options" for power management.

## European Union (and EEA) only.



This symbol indicates that this product is not to be disposed of with your household waste, according to the WEEE Directive (2002/96/EC) and your national law. This product should be handed over to a designated collection point, e.g., on an authorized one-for-one basis when you buy a new similar product or to an authorized collection site for recycling waste electrical and electronic equipment (EEE). Improper handling of this type of waste could have a possible negative impact on the environment and human health due to potentially hazardous substances that are generally associated with EEE. At the same time, your cooperation in the correct disposal of this product will contribute to the effective usage of natural resources. For more information about where you can drop off your waste equipment for recycling, please contact your local city office, waste authority, approved WEEE scheme or your household waste disposal service. For more information regarding return and recycling of WEEE products, please visit [www.canon-europe.com/environment](http://www.canon-europe.com/environment). (EEA: Norway, Iceland and Liechtenstein)

## Für EMVG

Dieses Produkt ist zum Gebrauch im Wohnbereich, Geschäftsbereich und Gewerbebereich sowie in Kleinbetrieben vorgesehen.

## Model Names

The following names may be provided for the safety regulations in each sales region of the Check Reader.

CR-135i: Model M111071

CR-190i: Model M111021

## Trademarks

- Canon and the Canon logo are registered trademarks, of Canon Inc. in the United States and may also be trademarks or registered trademarks in other countries.
- imageFORMULA is a trademark of CANON ELECTRONICS INC.
- Microsoft, Windows, Windows Vista, and Windows 7 are registered trademarks or trademarks of Microsoft Corporation in the United States and other countries.
- Microsoft product screen shot(s) reprinted with permission from Microsoft Corporation.
- Adobe, Acrobat, and Adobe Reader are registered trademarks or trademarks of Adobe Systems Incorporated in the United States and other countries.
- Other product and company names herein are, or may be, the trademarks of their respective owners.
- Ranger is a trademark of Silver Bullet technology, Inc.

## Copyright

Copyright 2010 by CANON ELECTRONICS INC. All rights reserved.

No part of this publication may be reproduced or transmitted in any form or by any means, electronic or mechanical, including photocopying and recording, or by any information storage or retrieval system without the prior written permission of CANON ELECTRONICS INC.

## Disclaimers

The information in this document is subject to change without notice.

CANON ELECTRONICS INC. MAKES NO WARRANTY OF ANY KIND WITH REGARD TO THIS MATERIAL, EITHER EXPRESS OR IMPLIED, EXCEPT AS PROVIDED HEREIN, INCLUDING WITHOUT LIMITATION, THEREOF, WARRANTIES AS TO MARKETABILITY, MERCHANTABILITY, FITNESS FOR A PARTICULAR PURPOSE OF USE OR NON-INFRINGEMENT. CANON ELECTRONICS INC. SHALL NOT BE LIABLE FOR ANY DIRECT, INCIDENTAL, OR CONSEQUENTIAL DAMAGES OF ANY NATURE, OR LOSSES OR EXPENSES RESULTING FROM THE USE OF THIS MATERIAL.

CANON ELECTRONICS INC. IS NOT LIABLE FOR THE STORAGE AND HANDLING OF DOCUMENTS SCANNED WITH THIS PRODUCT, OR THE STORAGE AND HANDLING OF THE RESULTING SCANNED IMAGE DATA.

IF YOU INTEND TO DISCARD THE ORIGINALS OF THE SCANNED DOCUMENTS, YOU ARE RESPONSIBLE FOR INSPECTING THE SCANNED IMAGES AND VERIFYING THAT THE DATA IS INTACT. THE MAXIMUM LIABILITY OF CANON ELECTRONICS INC. UNDER THIS WARRANTY IS LIMITED TO THE PURCHASE PRICE OF THE PRODUCT COVERED BY THE WARRANTY.

# INTRODUCTION

---

Thank you for purchasing the Canon Check Reader CR-135i/CR-190i. Please read this manual thoroughly before using the machine in order to familiarize yourself with its capabilities, and to make the most of its many functions.

## Manuals for the CR-135i/CR-190i

The following manuals are provided with the CR-135i/CR-190i. Be sure to read these manuals thoroughly before using the scanner. (The Installation Guide and the Operation & Maintenance Guide are extracted from the Instructions.) Electronic manual is stored as a PDF file on the supplied Setup Disc and requires Adobe Reader to open. (You can download Adobe Reader from the Adobe Web site.)

### Installation Guide (Supplied with the scanner/Electronic Manual)

Describes the procedure for setting up the CR-135i/CR-190i for scanning. Set up the CR-135i/CR-190i in accordance with the Installation Guide. For details on the CR-135i/CR-190i, refer to the *Instructions* (electronic manual).

### Operation & Maintenance Guide (Supplied with the scanner/Electronic Manual)

Describes the basic operations for using the CR-135i/CR-190i, troubleshooting, and maintenance. For details on the settings of the CR-135i/CR-190i, refer to the *Instructions* (electronic manual).

### Instructions (Electronic Manual): This Manual

Describes how to use the scanner, and includes instructions for configuring the scanner settings, as well as handling, maintenance, and troubleshooting information.

## Symbols Used in This Manual

The following symbols are used in this manual to explain procedures, restrictions, handling precautions, and instructions that should be observed for safety.

### WARNING

Indicates a warning concerning operations that may lead to death or injury to persons if not performed correctly. To use the machine safely, always pay attention to these warnings.

### CAUTION

Indicates a caution concerning operations that may lead to injury to persons, or damage to property if not performed correctly. To use the machine safely, always pay attention to these cautions.

### IMPORTANT

Indicates operational requirements and restrictions. Be sure to read these items carefully to operate the machine correctly, and avoid damaging the machine.

### NOTE

Indicates a clarification of an operation, or contains additional explanations for a procedure. Reading these notes is highly recommended.

## Table of Contents

Connecting the Scanner to a Computer.....	2	Turning ON and OFF the Power.....	21
INTRODUCTION .....	6	Turning ON the Power .....	21
Manuals for the CR-135i/CR-190i.....	6	Turning OFF the Power.....	22
Symbols Used in This Manual.....	6	Preparing the Ink Cartridge .....	23
Important Safety Instructions .....	9	About the Ink Cartridge .....	23
Handling .....	9	Setting the Ink Cartridge and Adjusting the Print Position .....	23
Installation Location .....	10	Software.....	25
Power Supply .....	11	How to Use the Software .....	25
Moving the Scanner .....	11	How to Use the Scanning Utility.....	25
Introduction to the CR-135i/CR-190i.....	12	How to Use the Ranger .....	27
Features of the CR-135i/CR-190i .....	12	Uninstalling the Software .....	28
Features .....	12	Document Feeding and Scanning.....	30
Packaging: What Is in the Box? .....	13	Documents .....	30
Part Names .....	14	Document .....	30
Front View .....	14	Envelope .....	31
Rear View.....	16	Using Ultrasonic Double Feed Detection .....	32
Connector.....	16	Placing Documents .....	32
Exterior Dimensions.....	16	Document Feeding and Scanning.....	33
Preparation Before Use .....	17	Scan Procedure .....	34
Setting Up the Scanner .....	17	Separation OFF Mode.....	36
Checking Your Operating Environment .....	18	Troubleshooting .....	37
Installing the Software.....	19	When the Scanner Is Not Recognized.....	37
Installing the Scanning Utility .....	19	Clearing Paper Jams .....	37
Connecting the Scanner to a Computer.....	20	Feeding Trouble.....	39
USB Connections.....	20	When the Scanned Image Is Not Normal .....	41
Connecting the Power Cord .....	21		

Maintenance .....	42
Daily Cleaning.....	42
Cleaning the Main Unit.....	42
Cleaning the Feed Path .....	42
Cleaning the Scanning Glass and Rollers.....	44
Cleaning the Magnetic Heads .....	47
Cleaning the Ink Jet Nozzles.....	48
Cleaning with the Cleaning Cards (U.S.A. Only).....	49
Maintenance .....	50
Replacing the Ink Cartridge.....	50
Replacing the Ink Disposal Tank.....	51
Replacing the Rollers .....	53
Adjusting the Separation Roller Gap .....	56
Specifications.....	57
Scanner Specifications.....	57
Index .....	58



# Important Safety Instructions

---

## Handling

### WARNING

- Never install and operate the scanner near flammable substances, such as alcohol, paint thinner, benzene, or any other type of volatile solution.
- Never damage or modify the power cord, and never place heavy objects on the power cord.
- Always make sure that your hands are dry when you are handling the power cord or power plug. Never grasp the power plug when your hands are wet.
- Never plug the scanner into a multiplug power strip.
- Never bundle, wrap, or tie the power cord around itself or another object. Connect the power plug securely into the power outlet.
- Use only the power cord and power plug provided with the scanner.
- Never attempt to disassemble or modify the scanner.
- Never use flammable aerosol products near the scanner.
- Before you clean the scanner, turn the power OFF and disconnect the power cord from the power outlet.
- To clean the scanner's exterior, use a firmly wrung cloth, moistened slightly with water or mild detergent. Never use any type of volatile solution, such as alcohol, benzene or paint thinner.
- If you hear strange sounds, detect smoke or abnormal heat, sense vibration, or smell odd odors around the scanner, turn OFF the power switch immediately and disconnect the power cord from the power outlet. Contact your local authorized Canon dealer or service representative to have the scanner serviced.

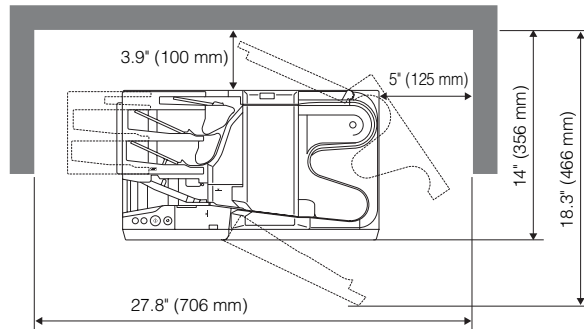
- Handle the scanner with care. Avoid shock and vibration to the scanner caused by reckless handling. If you suspect the scanner has been accidentally damaged, turn OFF the power switch immediately and disconnect the power cord from the power outlet. Contact your local authorized Canon dealer or service representative to have the scanner serviced.
- Before you move the scanner, always turn OFF the power and disconnect the power cord from the power outlet.
- This product emits low level magnetic flux. If you use a cardiac pacemaker and feel abnormalities, please be away from this product and consult your doctor.

### CAUTION

- To avoid damage to the scanner, never place the scanner on an unstable or vibrating surface. The scanner may tip or fall over, causing injury.
- To avoid overheating and causing a fire, never block the air vents on the back of the scanner.
- Keep all liquids, beverages, or any type of liquid, and clips, staples, necklaces, or other metal objects away from the scanner. If you accidentally spill liquid or drop a metal object into the scanner, turn OFF the power immediately and disconnect the power cord from the power outlet. Contact your local authorized Canon dealer or service representative to have the scanner serviced.
- Never install the scanner in humid or dusty locations. Doing so may cause a fire or electrical shock.
- Never place heavy objects on top of the scanner, as these objects may tip or fall over, and cause injury.

- When you remove the power cord, grip it by the power plug head. Never attempt to disconnect the power cord from the power outlet by pulling on the power cord. Doing so may damage or expose the cord's internal wiring, and cause a fire or electrical shock.
- Keep the area around the power outlet clear of all obstacles so you can disconnect the power cord easily at all times.
- Never spill water or volatile solutions (alcohol, benzene, paint thinner) into the scanner. Doing so may cause a fire or electrical shock.
- When the scanner is not being used for a long period of time, disconnect the power cord from the power outlet.
- Avoid wearing loose fitting clothing, dangling jewelry, long ties, or long hair that could become entangled with moving parts, especially the rollers that feed paper into the scanner. If such objects become entangled, immediately disconnect the power plug from the power outlet to stop the scanner.
- Be careful when you are loading a document or clearing a paper jam. It is possible that the paper edges may cut your fingers.
- Do not open the Maintenance Cover while the scanner is operating. Doing so may result in a malfunction or injury.
- Do not touch the pins and contacts on the scanner's connector with your hands. Doing so may result in a malfunction.
- Do not touch anything except the operation buttons when the jogger is operating (CR-190i only) or documents are being fed.
- Do not turn the scanner upside down. The ink may leak from the ink disposal tank.

## Installation Location



For operation, maintenance, and ventilation, make sure that there is enough space around the scanner, as shown in the illustration above.

Avoid placing the scanner in the following places. It may cause a malfunction and adversely affect the scanner or your computer.

- Places exposed to direct sunlight
  - If installation in such places is unavoidable, provide a curtain or similar object to shade the scanner.
- Places subject to dust and fumes
  - Dust and cigarette fumes adversely affect the components inside the scanner.
- Near running water, a heat source, water vapor, or in an area, such as a laboratory exposed to ammonia gas, paint thinner, or other volatile chemicals
- Places subject to excessive vibration and shock

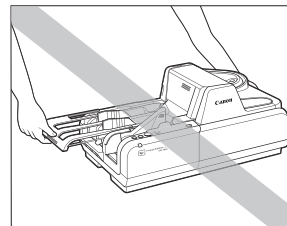
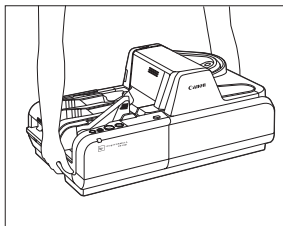
- Places subject to rapid changes in temperature or humidity  
Condensation occurring inside the scanner may impair image quality. Place the scanner in a room that is within the following range:  
Room temperature: 50°F to 90.5°F (10°C to 32.5°C)  
Relative humidity: 20% to 80% RH  
Use the recommended operating environment for the ink cartridge when using the imprinter.
- Near electronic equipment or heavy equipment that generates a strong magnetic field, such as a speaker, TV, and radio

## Power Supply

- Connect only to a power outlet of the rated voltage and power supply frequency (either 120 V, 60 Hz or 220-240 V, 50/60 Hz, depending on your region).
- Make sure that the scanner is connected to an independent power outlet. Do not plug the scanner into an outlet shared with another device. If you use an extension cord, make sure that the extension cord is rated for the current requirements of the scanner.
- If you are unsure of anything relating to the power supply, contact your local authorized Canon dealer or service representative for further information.
- Never place an object on top of the power cord or step on the power cord.
- Never bundle the power cord or wrap the cord around an object, such as a table leg.
- Do not tug on the power cord. When you remove the power cord, grip it by the power plug head.
- Keep the area around the power outlet free of obstacles.

## Moving the Scanner

When you move the CR-135i/CR-190i, hold it firmly with both hands and carry it carefully. Do not hold the scanner by the Eject Stopper. The scanner weighs approximately 18.5 lb (8.4 kg).



### WARNING

**When moving the scanner, be sure to turn OFF the power and remove any cables. If the cables are not removed before moving the scanner, you may damage the plugs or connector by forcibly pulling them out.**

# Introduction to the CR-135i/CR-190i

---

This chapter describes the features of the CR-135i/CR-190i scanner, what comes packaged in the box, and the names and functions of parts on the scanner.

## Features of the CR-135i/CR-190i

The Canon Check Reader CR-135i/CR-190i is a scanner with magnetic heads that can read checks and other documents that are printed with MICR (Magnetic Ink Character Recognition) compatible fonts, and is capable of OCR (Optical Character Recognition). The CR-135i/CR-190i is compact and can handle large volumes of checks.

## Features

### High-Speed Scanning

The CR-135i performs high-speed scans of check-size documents at 135 cpm (200 dpi resolution).

The CR-190i performs high-speed scans of check-size documents at 190 cpm (200 dpi resolution).

### Supports Large Documents

Documents up to 4.3" x 9.6" (108 mm x 245 mm) can be scanned.

### High Durability

The scanner has a high durability of 24 million scans.

### Compact Size

8.4" (H) x 18.7" (W) x 10.7" (D) (214 mm (H) x 476 mm (W) x 272 mm (D))

## Supports Black-and-White (Binary) and Grayscale Output

### Reads MICR Characters

A magnetic head is used to scan MICR characters that have been printed with magnetic ink or toner.

### Supports OCR (Optical Character Recognition)

Character images, such as E13B, OCR-A, OCR-B, and check writer are recognized as characters by the OCR function.

### Easy to Maintain

Large Maintenance Covers make handling paper jams and cleaning easy.

### Jogger Mechanism Is Standard (CR-190i only)

A jogger mechanism, which uses vibration to align documents, comes standard equipped with the CR-190i.

### Separation OFF Mode

You can scan the following documents:

- Thick documents
- Documents that contain two or more pages together as one document
- Documents that have a rough surface
- Duplicate forms that have sticky edges

### Paper Thickness Adjustment Mechanism

Adjust the Separation Roller gap to the thickness of the paper being fed.

### Three Eject Pockets and Automatic Sorting Mechanism

The scanner has three Eject Pockets and the documents are automatically ejected to each pocket according to sort methods. The scanner fits various scan operations using this mechanism.

### Ultrasonic Double Feed Detection and Double Feed Detect OFF Button (Scanning Utility for CR-135i/CR-190i)

The scanner detects double-fed documents using ultrasonic, and can turn OFF the function with the Function Button.

### Drop-Out Color

This function enables drop-out scanning of a specific color in the document.

### Imprinter Is Standard Equipment

An imprinter mechanism, which prints text (4 lines) or a bitmap on documents as they are scanned, comes standard equipped with the scanner. The imprinter's ink cartridge is not included, and must be purchased separately. (See "About the Ink Cartridge," on p. 23.)

### Eject Pocket Full Detection (Scanning Utility for CR-135i/CR-190i)

Detects when any one of the three Eject Pockets is full and stops scanning. (See "Scan Procedure," on p. 34.)

### Placing Additional Documents

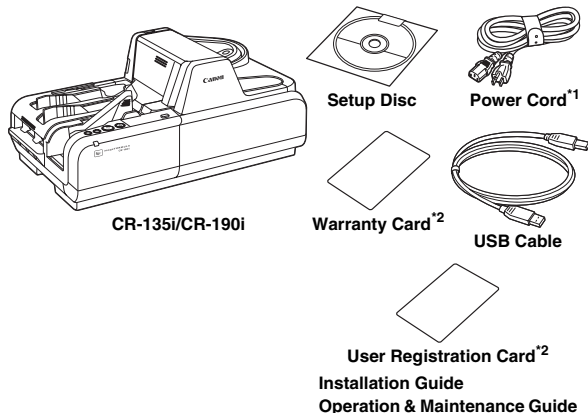
You can place additional documents while the machine is scanning.

### Replaceable rollers and ink disposal tank

You can replace the rollers (Pickup Roller, Feed Roller, and Separation Roller) and the ink disposal tank.

## Packaging: What Is in the Box?

Make sure that you have everything shown below. Check every item you have removed from the box. If any items are missing, contact your local authorized Canon dealer.



\*1 The power cord varies, according to the country of purchase.

\*2 For the United States and Canada only.

## Part Names

This section describes the names and functions of each part. Before you connect the CR-135i/CR-190i, familiarize yourself with its parts and their functions.

### Front View

#### Operation Buttons

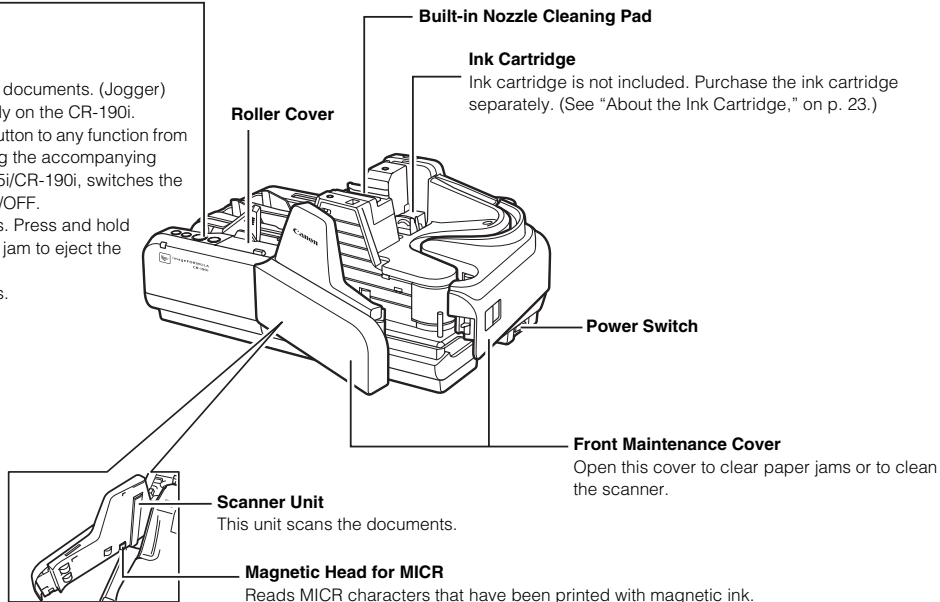


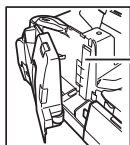
**JOG:** Uses vibration to align the documents. (Jogger)  
This button is available only on the CR-190i.

**Function (F):** You can assign this button to any function from an application. When using the accompanying Scanning Utility for CR-135i/CR-190i, switches the double feed detection ON/OFF.

**START:** Starts scanning operations. Press and hold this button during a paper jam to eject the jammed document.

**STOP:** Stops scanning operations.





**Scanner Unit**

This unit scans the documents.

**Back Maintenance Cover**

Open this cover to clear paper jams or to clean the scanner.

**Top Cover**

**Eject Pocket**

Documents are separated with flappers into three pockets. (See p. 35)

**Eject Stopper**

Pull out the Eject Stopper to prevent documents from falling off the output tray.

**Adjustment Dial Cover**

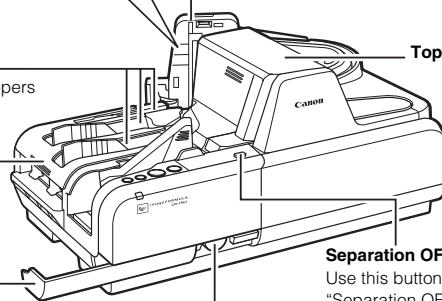
**Adjustment Dial**

Adjust the Separation Roller gap if feeding errors occur too frequently. (See "Adjusting the Separation Roller Gap," on p. 56.)

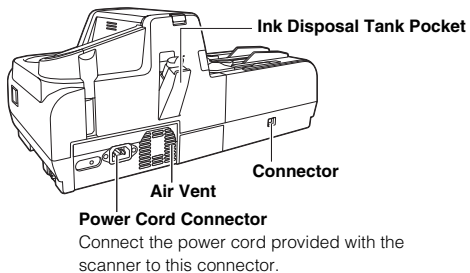
**Separation OFF Mode Button**

Use this button when you want to scan the following documents (See "Separation OFF Mode," on p. 36.):

- Thick documents
- Documents that contain two or more pages together as one document
- Documents that have a rough surface
- Duplicate forms that have sticky edges



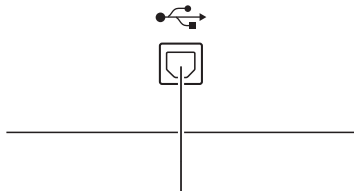
## Rear View



### CAUTION

To avoid overheating and causing a fire, never block the air vents on the back of the scanner.

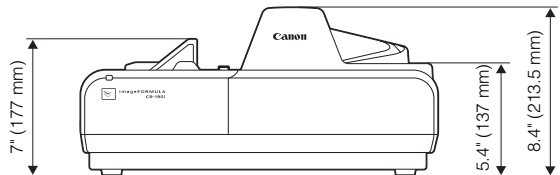
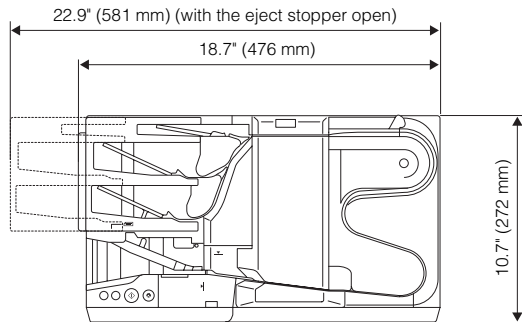
## Connector



Connect a Hi-Speed USB 2.0 compatible cable. (See "USB Connections," on p. 20.)

## Exterior Dimensions

Units: inches (units in parenthesis are millimeters)





# Preparation Before Use

This chapter describes how to prepare the scanner to scan documents.

## Setting Up the Scanner

Perform the following steps to set up the CR-135i/CR-190i. Refer to the section for each step for details about that step.

- 1 Check your operating environment.** (See “Checking Your Operating Environment,” on p. 18.)



- 2 Install the software.** (See “Installing the Software,” on p. 19.)

Install the Scanning Utility provided with the CR-135i/CR-190i.



- 3 Connect the scanner to a computer.** (See “Connecting the Scanner to a Computer,” on p. 20.)



- 4 Turn ON the power.** (See “Turning ON the Power,” on p. 21.)



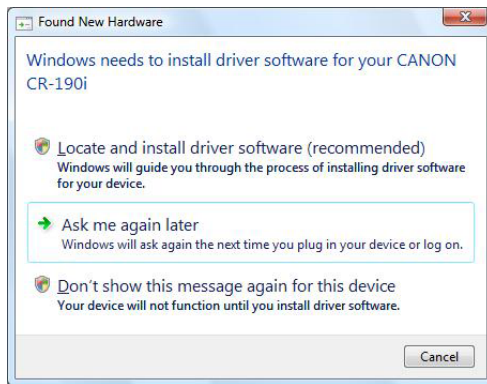
- 5 Automatically installing the device driver.** (See p. 22.)

The device driver is installed automatically when Windows recognizes the CR-135i/CR-190i.

### ! IMPORTANT

- To have the device drivers installed automatically when the computer recognizes the CR-135i/CR-190i, the software needs to be installed before the CR-135i/CR-190i is connected to the computer.
- If you connect the computer and turn ON the CR-135i/CR-190i before installing the software, the following wizard screen appears. If this happens, click [Cancel], turn OFF the CR-135i/CR-190i, and then install the software.

The following wizard screen is an example in Windows Vista. When a similar wizard screen appears in Windows XP/7, click [Cancel].



Wizard Screen (Windows Vista)

## Checking Your Operating Environment

The following computer system requirements are recommended for using the CR-135i/CR-190i.

### Operating Systems:

- Microsoft Windows XP (32bit) SP3 or later
- Microsoft Windows XP (64bit) SP2 or later
- Microsoft Windows Vista (32/64bit) SP1 or later
- Microsoft Windows 7 (32/64bit)

### Specifications:

- CPU: Intel Core2 Duo 3.0 GHz or faster
- Memory: 1 GB or more
- USB 2.0 interface

### Interface Cable

- Use the cable provided or a Hi-Speed USB 2.0 interface cable to connect to the computer's USB port.

## ! IMPORTANT

- If you use the USB interface that was provided as standard with your computer:
  - Use the most recently available USB 2.0 driver provided by Microsoft. Contact your local authorized Canon dealer for more detailed information.
  - Not all USB interfaces provided as standard with personal computers are guaranteed. Contact your local authorized Canon dealer for more detailed information.
  - Scanning speeds are slower if your computer's standard USB interface is USB 1.1.
  - You should use the USB cable originally bundled with the scanner or a Hi-Speed USB 2.0 compatible cable.
- If the CPU, memory, interface card, and other specifications do not satisfy the installation requirements, the scanning speed may be greatly reduced and transmission may take longer.
- Even if the computer satisfies the recommended specifications, the scanning speed may vary, depending on the scan settings.

## Installing the Software

The following software applications are provided on the setup disc that is packaged with the scanner. Make sure to open and read the Readme.txt file on the setup disc before installing the software.

### Scanning Utility

Canon Scanning Utility is an application that provides scanning, file saving, image viewing, printing, and various other functions. A dedicated scanner driver is installed after you install the utility software.

### Ranger

Ranger is an API software. For details, see “About the Ranger,” on p. 27.

#### **!** IMPORTANT

- The Scanning Utility includes a device driver so that Windows can recognize the CR-135i/CR-190i. Be sure to install the Scanning Utility before connecting the CR-135i/CR-190i to the computer.
- Some functions mentioned in this manual may not be operated in some applications.

## Installing the Scanning Utility

Follow the instructions below to install the Scanning Utility and the dedicated driver.

#### **NOTE**

The dedicated scanner driver is installed after the Scanning Utility has been installed.

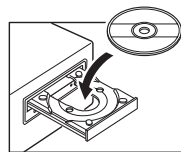
- 1** Turn ON your computer, and log on to Windows.

#### **!** IMPORTANT

Be sure to log on as the Administrator.

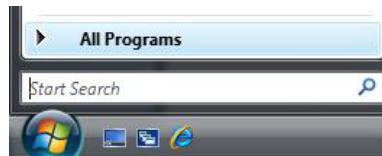
- 2** Insert the setup disc into the CD-ROM drive.

This manual assumes that “D” is assigned to your CD-ROM drive.

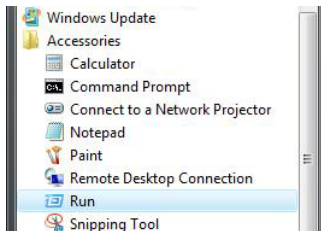


- 3** Click [Start], and then click [All Programs].

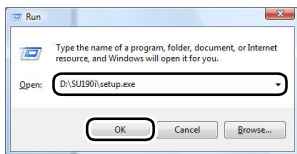
The procedure in Windows XP/7 is different from the ones described in this manual. Refer to the Windows XP/7 “Help and Support Center” to select [Run].



- 4 Click [Accessories], and then click [Run].



- 5 Enter "D:\SU190\setup.exe" in the [Open] fields, and then click [OK].



Installation starts.

- 6 Follow the instructions on the screen to complete the installation.

### ! IMPORTANT

The computer may need to be restarted, after the installation, depending on the operating system. If this is necessary, make sure to restart the computer.

## Connecting the Scanner to a Computer

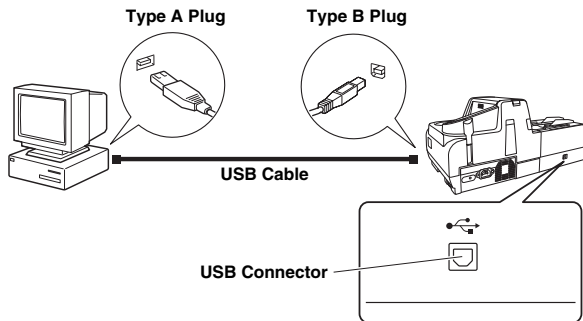
The only way to connect the scanner to your computer is with a USB cable.

### ! CAUTION

- Do not turn OFF the scanner or remove the interface cable when an application is running.
- Turn OFF the computer and the scanner before changing the cable.

## USB Connections

Connect the scanner and the computer with the cable (MH2-5378) provided or a Hi-Speed USB 2.0 cable.



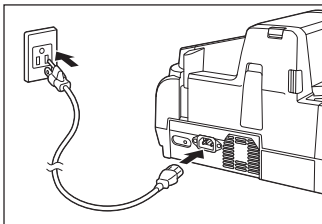
### 📄 NOTE

Connect the type B plug (square) to the scanner and connect the type A plug (flat) to the USB port on the computer.

## Connecting the Power Cord

Connect the power cord.

Make sure to use only the power cord provided with the scanner.



### **⚠ WARNING**

When connecting the power cord, follow these precautions. Failure to do so may cause a fire or electrical shock.

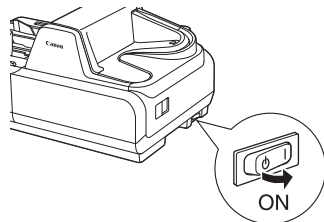
- Never grasp the power plug when your hands are wet.
- Never plug the scanner into a multiplug power strip.
- Never bundle or tie the power cord around itself or another object.
- Connect the power plug securely into the power outlet.
- Use only the power cord and power plug provided with the scanner.
- Before you connect the power cord, make sure to turn OFF the power switch.
- Connect only to a power outlet of the rated voltage and power supply frequency (either 120 V, 60 Hz or 220-240 V, 50/60 Hz, depending on your region).
- Do not plug the scanner into a power outlet shared with another device. If you use an extension cord, make sure that the extension cord is rated for the current requirements of the scanner.

## Turning ON and OFF the Power

Follow the procedures below to turn the scanner power ON and OFF.

### Turning ON the Power

- 1 To turn ON the scanner, press the Power Switch to the “ | ” position.



### **! IMPORTANT**

- When you turn ON the power, the power LED lights and remains lit.
- If the scanner does not work, or the power LED continues to flash, there is a problem with the scanner. Turn OFF the power, and contact your local authorized Canon dealer or service representative to have the scanner serviced.

### **⚠ WARNING**

If you hear strange sounds, detect smoke or abnormal heat, sense a vibration, or smell odd odors around the scanner, turn OFF the power immediately and disconnect the power cord from the power outlet. Contact your local authorized Canon dealer or service representative to have the scanner serviced.

**2** Turn ON your computer.

**3** Windows recognizes the CR-135i/CR-190i as new hardware, and installation starts automatically.



(Windows Vista)

## NOTE

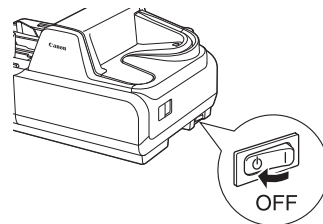
The CR-135i/CR-190i will be registered as "CANON CR-135i USB" or "CANON CR-190i USB" in the Imaging Device directory.



## Turning OFF the Power

**1** Turn OFF your computer.

**2** To turn OFF the scanner, press the Power Switch to the "⏻" position.



## CAUTION

- Wait at least 10 seconds before turning the scanner back ON.
- For your safety, disconnect the power plug from the power outlet if you are not using the scanner for a long period of time.

## Preparing the Ink Cartridge

This section describes how to prepare the ink cartridge so that you can use the imprinter to print text or a bitmap on scanned documents.

### About the Ink Cartridge

The ink cartridge is not included with the scanner. Purchase an ink cartridge separately, as shown below.

#### Compatible ink cartridges:

Region	Canon Ink Cartridge PG-50 Black	Canon Ink Cartridge PG-40 Black
Europe and Oceania	0616B001	0615B001
Americas	0616B002/0616B005	0615B002/0615B005
Asia	0616B003	0615B003

### ! IMPORTANT

These ink cartridges are available for 5 years after production has stopped.

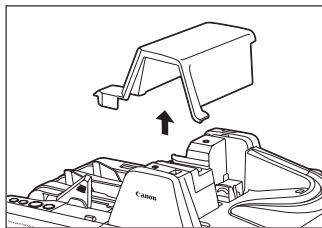
### Setting the Ink Cartridge and Adjusting the Print Position

The ink cartridge needs to be set to print. Set the ink cartridge according to the following procedure. You can adjust the print position to two different levels.

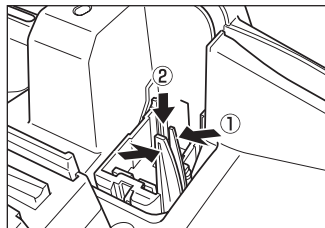
### ! IMPORTANT

- To set the ink cartridge, turn the scanner OFF before removing the Top Cover. After the ink cartridge is set, replace the Top Cover, and then turn the scanner back ON.
- Finish up the unpacked ink cartridge as soon as possible. More frequent cleaning of the ink cartridge is required if long time elapses after unpacking.

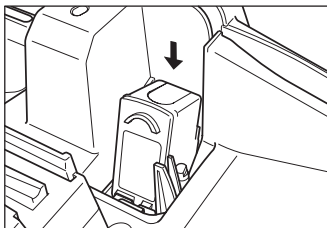
#### 1 Remove the Top Cover.



#### 2 Squeeze the Print Position Adjustment Lever, and push it down to the bottom position.



- 3** Place the ink cartridge shown in the diagram below.



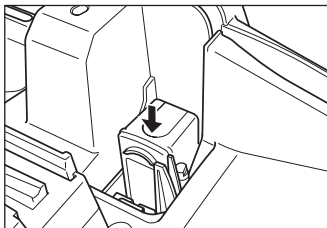
**CAUTION**

Do not touch the electrical contact on the carriage. Doing so may cause a malfunction.

**NOTE**

Do not use more than one cartridge by rotation. If you do so, applications cannot check the ink level precisely.

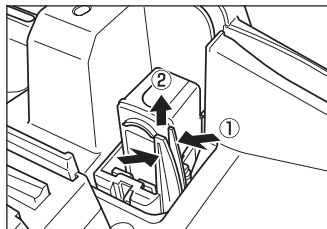
- 4** Push down the ink cartridge until it clicks into place.



**IMPORTANT**

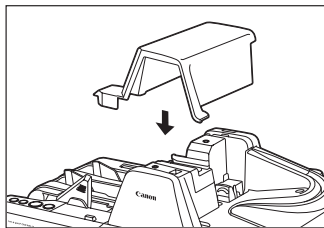
Make sure that the ink cartridge is securely in place.

- 5** Squeeze the Print Position Adjustment Lever and move it to adjust the print position.



Top:  
1.92" (48.8 mm) from the  
bottom edge of the  
document  
Bottom:  
1.17" (29.6 mm) from the  
bottom edge of the  
document

- 6** Carefully replace the Top Cover.





# Software

This chapter describes how to use the Scanning Utility and the Ranger.

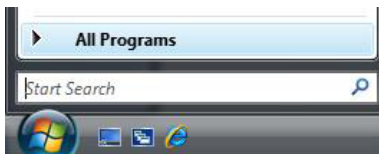
## How to Use the Software

This section describes how to start up the Scanning Utility so that you can use the scanner. Read the Help files for the Scanning Utility for information on how to use it.

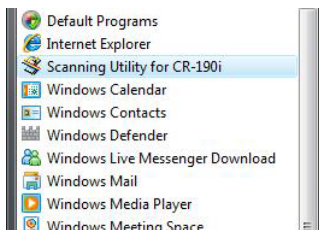
### How to Use the Scanning Utility

This section describes the procedure for using the Scanning Utility. Read the [Help] file in [Scanning Utility] for more information.

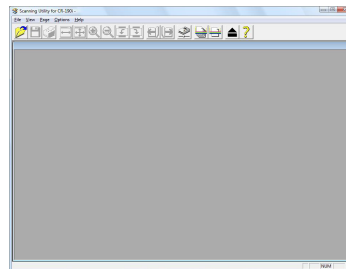
- 1 Click [Start], and then click [All Programs].



- 2 Click [Scanning Utility for CR-135i/CR-190i].

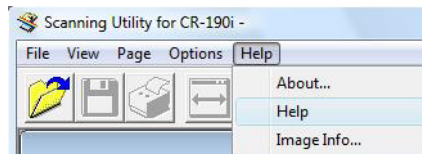


- 3 Start the Scanning Utility.

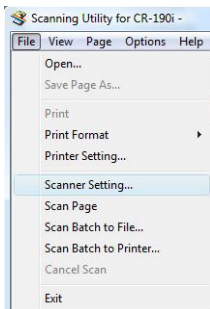


#### NOTE

The basic operation of the Scanning Utility is noted in the Scanning Utility help file. On the [Help] menu, click [Help] to view the explanation.

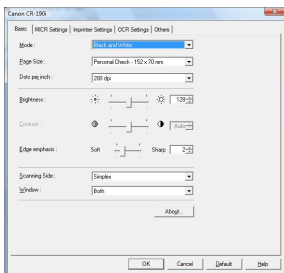


- 4 Select [Scanner Setting] from the [File] menu.



The Settings dialog box appears.

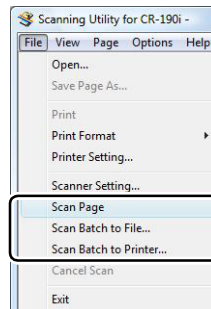
- 5 Set the scan conditions and click [OK].



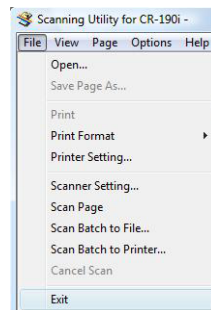
**NOTE**

For information about the settings for the scan conditions, click [Help] on the Settings dialog box to open the Help file.

- 6 Select the scanning method from the [File] menu and start scanning.



- 7 When scanning is finished, click [Exit] on the [File] menu to quit the Scanning Utility.



## How to Use the Ranger

### About the Ranger

Silver Bullet Technology's Ranger™ Transport API software, allowing it to be easily integrated into existing systems or be mixed and matched with a wide range of leading check processing software.

### Installing the Ranger

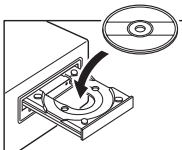
Follow the instructions below to install the Ranger.

- 1 Turn ON your computer, and start Windows.

#### **!** IMPORTANT

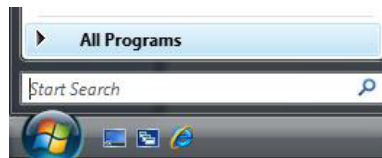
Be sure to log on as the administrator.

- 2 Insert the setup disc into the CD-ROM drive.  
This manual assumes that "D" is assigned to your CD-ROM drive.

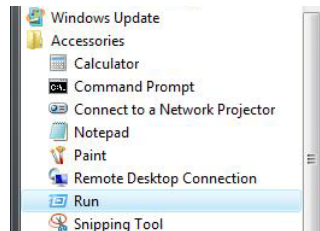


- 3 Click [Start], and then click [All Programs].

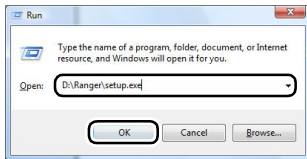
The procedure in Windows XP/7 is different from the ones described in this manual. Refer to the Windows XP/7 "Help and Support Center" to select [Run].



- 4 Click [Accessories], and then click [Run].



- 5** Enter “D:\Ranger\setup.exe” in the [Open] field, and then click [OK].



Installation starts.

- 6** Follow the instructions on the screen to complete the installation.

### **!** IMPORTANT

The computer may need to be restarted, after the installation, depending on the operating system. If this is necessary, make sure to restart the computer.

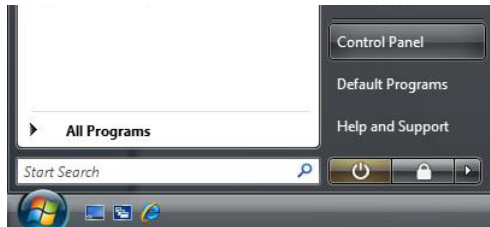
## Uninstalling the Software

This section describes how to uninstall the Scanning Utility and the Ranger.

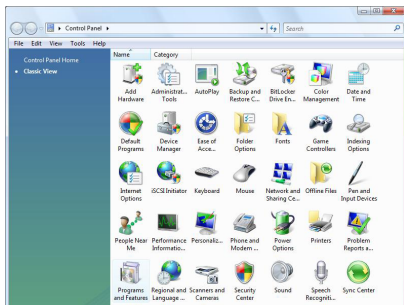
### **!** IMPORTANT

- Be sure to log on as the Administrator.
- The procedure in Windows XP/7 is different from the ones described in this manual. Refer to the Windows XP/7 “Help and Support Center” to uninstall the software.

- 1** Click [Start], and then click [Control Panel].

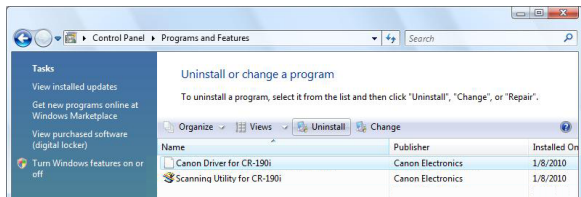


**2** Double-click the [Programs and Features] icon.



The [Programs and Features] dialog box appears.

**3** Select the software that you want to remove from the list in the dialog box, and then click [Uninstall].



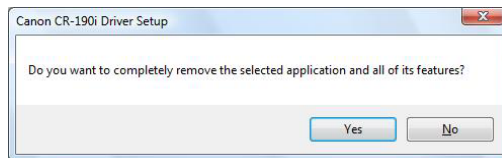
**NOTE**

When the [User Account Control] dialog box appears, click [Continue].

**! IMPORTANT**

- If you uninstall the "Scanning Utility for CR-135i/CR-190i" you also need to uninstall the "Canon Driver for CR-135i/CR-190i."
- If you uninstall the Ranger, select the "Ranger for CR-135i/CR-190i."

**4** The [Confirm File Deletion] dialog box appears.



If you selected "Canon Driver for CR-135i/CR-190i," the above dialog box appears.

**5** Click [Yes], and the uninstaller starts.

Follow the instructions on the screen to finish uninstalling the software.

# Document Feeding and Scanning

This chapter describes precautions regarding documents that can be handled on this scanner and scanning operations.

## Documents

This section describes the types of documents that can be used and how to place them.

### CAUTION

**Treat the documents carefully. The paper edges may cut your fingers.**

### Document

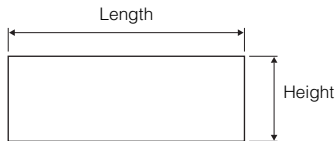
The CR-135i/CR-190i can feed a wide variety of document sizes. The ranges of height and length for a document are:

Height : 2.7" to 4.3" (68 to 108 mm)

Length : 4.7" to 9.6" (120 to 245 mm)

Thickness : 0.003" to 0.008" (0.08 to 0.20 mm)

Weight : 17 to 40 lb bond (64 to 157 g/m<sup>2</sup>)



Follow these guidelines when you prepare a document for scanning:

- Before scanning documents that contain pasted artwork, make sure that the ink or paste is thoroughly dry. If the documents are scanned with wet ink or paste, the inside of the scanner may become dirty and it may cause a malfunction.
- If you scan a document written in pencil, the letters may not be scanned properly or the pencil may rub off onto the rollers and stain subsequent documents. Before you scan this kind of document, make a copy, and then scan the copy. After scanning a document written in pencil or some other soft writing material, be sure to clean the scanning rollers. (See "Cleaning the Scanning Glass and Rollers," on p. 44.)
- If you scan thin paper in the Duplex mode, the ink printed on the back side may be scanned. If this happens, adjust the scanning density.
- Scanning documents with a rough surface may not feed easily, and may cause friction between the documents, resulting in a feeding error. If this happens, feed the documents one by one.
- To avoid paper jams, damage to documents, and a scanner malfunction, do not feed the following types of paper into the scanner. If you want to scan these types of paper, first make a copy, and then scan the copy.



Wrinkled or creased paper



Carbon backed paper



Curled paper



Coated paper or fax recording paper



Torn paper



Extremely thin paper



Paper with clips or staples



Paper with binding holes

## Envelope

You can also scan the envelope. When using separation OFF mode, you can scan an envelope with thickness up to 0.02" (0.5 mm) or weight up to 111 lb bond (413 g/m<sup>2</sup>).



### NOTE

- Disable the double feed detection function. (See "Using Ultrasonic Double Feed Detection," on p. 32.)
- If the envelope is not the first document in the batch, it may cause a feeding error or a paper jam.
- Some type of envelope may cause a feeding error or a paper jam.



### NOTE

- Note that mixing documents of different thickness may cause a malfunction during feeding.
- Curled, wrinkled, or folded documents may cause an error. If this happens, straighten out the curls, or reduce the number of documents loaded.

## Using Ultrasonic Double Feed Detection

The double feed detection function that the scanner is equipped with uses the penetration of ultrasonic waves to detect when two or more documents are fed at the same time.

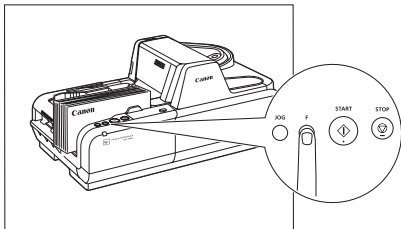
If false detections happen too often, disable the double feed detection function.



### NOTE

When Using the Accompanying Scanning Utility for CR-135i/CR-190i:

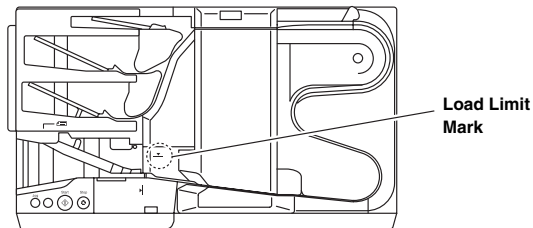
You can disable the double feed detection function to push the Function Button. When the function is disabled, the light of the Function Button is off.



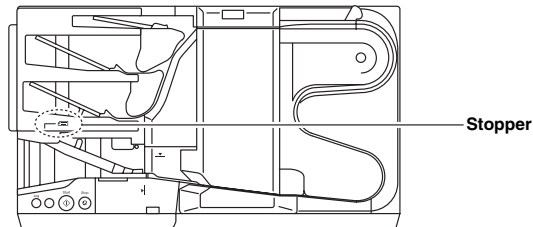
## Placing Documents

Note the following points when placing documents on the scanner.

- Place the front of the document toward you.
- Do not exceed the Load Limit Mark when placing documents in the document tray. This may cause feeding errors or paper jams.

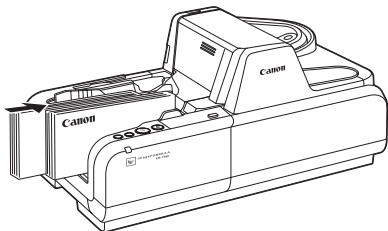


- A maximum of 250 documents can be loaded at one time.
- Move the stopper to the edge of the document in the document tray in accordance with the document. Otherwise, this may cause a paper eject error.





- Additional documents can be placed while the machine is scanning.



### **!** IMPORTANT

- Align the documents and set the bottom of the documents level in the document tray.
- Do not exceed the Load Limit Mark when placing documents. This may cause double feed error.

## Document Feeding and Scanning

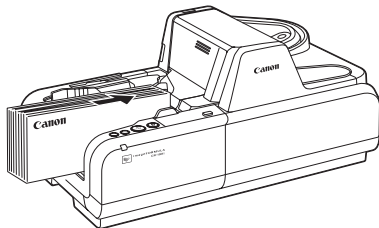
This section describes how to load and scan documents.

### **!** CAUTION

- Avoid wearing loose fitting clothing, dangling jewelry, long ties, or long hair that could become entangled with moving parts, especially the rollers that feed paper through the scanner. If such objects become entangled, immediately disconnect the power plug from the power outlet.
- Check the paper stack and remove all clips, staples, pins, or any other type of metal or plastic fastener. These objects may cause damage to the document, a paper jam, or a scanner malfunction.
- Do not touch anything except the operation buttons when the jogger is operating (CR-190i only) or documents are being fed.
- Do not touch documents that are being fed under any circumstances. The documents that are being fed may cut your hand.

## Scan Procedure

- 1 Carefully align the edges of the document.
- 2 Place the first page of the document facing you, and place the leading edge of the document into the scanner.



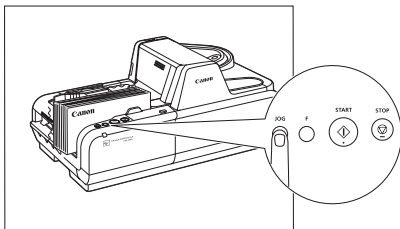
The remaining procedure differs depending on the scanner you are using.

For the CR-135i: Proceed to step 4

For the CR-190i: Proceed to step 3

- 3 (CR-190i only) If the documents are not aligned, press the JOG Button.

The jogger mechanism can be used to align documents.



## ! IMPORTANT

- If you press the JOG Button when a batch of documents of various sizes are loaded, the alignment will be incomplete, and the documents will not be scanned in the order loaded. If you are scanning documents of various sizes, align the leading edges of all the documents with the entry point of feeding.
- The jogger mechanism is not available for documents of less than 5.9" (150 mm) in length.

## NOTE

- The jogger does not work when the shutter is open. It occurs on the following conditions:
  - The STOP Button is pressed and the scanning stops.
  - There are documents on the document tray when a paper jam occurs. Remove the documents from the document tray to close the shutter. If the jammed document remains or the Top Cover is removed, the jogger does not work.
- The jogger vibrates for 6 seconds, and then stops. Press the JOG Button to stop the jogger.

- 4 Adjust the Eject Stopper in accordance with the document.

- 5 Instruct scanning to start from the software application.

## NOTE

- When Using the Accompanying Scanning Utility for CR-135i/CR-190i: There are three scanning methods as follows. Follow the each instruction.

### Scan 1 page

Click [Scan Page] from the [File] menu.

### Scan Batch to File

- 1 Click [Scan Batch to File] from the [File] menu.
- 2 Input the File name, and then click [Save].
- 3 Select Simplex or Duplex, and then click [Start Scanning].

### Scan Batch to Printer

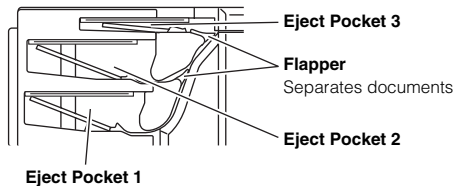
- ① Click [Scan Batch to Printer] from the [File] menu.
- ② Select Simplex or Duplex, and then click [Start Scanning].

- You can also start scanning with pressing the START Button.

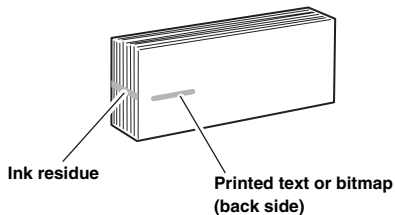
### 6 Scanning starts.

### NOTE

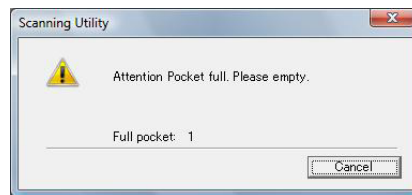
- If "Sort Method" is set in the software application, the document will be ejected to one of the three Eject Pockets according to the sort methods that have been set.



- When printing with the imprinter, ink may get on the leading edge of the document because the documents are ejected onto the printed surface.



- When Using the Accompanying Scanning Utility for CR-135i/CR-190i: Scanning is suspended and a message is displayed when the Eject Pocket becomes full of documents. Scanning resumes when the documents are removed from the Eject Pocket (Eject Pocket full detection).

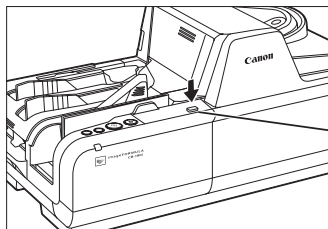


## Separation OFF Mode

Use this separation OFF mode when you want to scan the following documents:

- Thick documents
- Documents that contain two or more pages together as one document
- Documents that have a rough surface
- Duplicate forms that have sticky edges

Feed these documents one by one and press the Separation OFF Mode Button.



**Separation OFF  
Mode Button**

### **!** IMPORTANT

For duplicate forms, load the side with the sticky edges toward the feeding entry point.

# Troubleshooting

This chapter describes the problems that might occur in the CR-135i/CR-190i, and how to remedy them.

## When the Scanner Is Not Recognized

The following causes and remedies describe why your computer may not recognize the scanner.

**Cause** The Scanning Utility is not installed.

**Remedy** Install the Scanning Utility before connecting the scanner to the computer. (See "Setting Up the Scanner," on p. 17.)

**Cause** The scanner is not correctly connected to the computer.

**Remedy** Connect the scanner to the computer correctly. (See "Connecting the Scanner to a Computer," on p. 20.)

**Cause** The USB interface provided as standard with your computer is not compatible with the scanner.

**Remedy** Not all USB interfaces provided as standard with personal computers are guaranteed. Contact your local authorized Canon dealer for more detailed information. (See "Checking Your Operating Environment," on p. 18.)

**Cause** USB cable is not compatible with the scanner.

**Remedy** Use the USB cable provided with the scanner. (See "Checking Your Operating Environment," on p. 18.)

**Cause** USB hub is not compatible with the scanner.

**Remedy** Remove the USB hub to use the scanner. (See "Checking Your Operating Environment," on p. 18.)

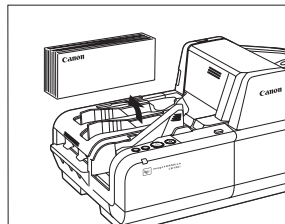
## Clearing Paper Jams

If paper has jammed, open the Maintenance Cover and remove the jammed paper.

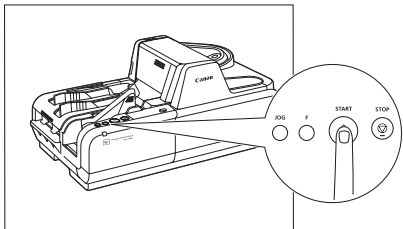
### ⚠ CAUTION

- Be careful when you clear a paper jam. You may be injured unexpectedly. For example, the paper edges may cut your fingers, or the document may be damaged.
- Remove all jammed sheets of paper. Paper scraps left inside the scanner may cause a paper jam or malfunction.

- 1 Remove scanned documents from the Eject Pockets.

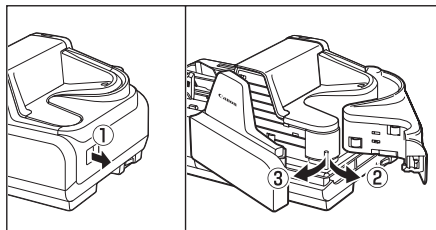


- 2** Press and hold the START Button.  
The jammed document is ejected into the Eject Pocket.

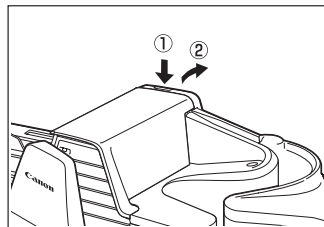


If the above procedure does not clear the paper jam, perform the following to remove the jammed document.

- 3** Pull the Open Button, and pull the Front Maintenance Cover open to the right and left.

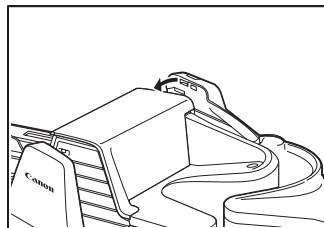


- 4** Press the Open Button, and push the Back Maintenance Cover open to the back.

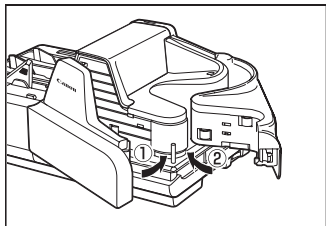


- 5** Remove the paper that has jammed.

- 6** Close the Back Maintenance Cover.



- 7** Close the Front Maintenance Cover in the order shown in the diagram below.



## Feeding Trouble

If the document is not fed properly or the detection functions do not work properly, remedy the problem by checking the following conditions.

### Condition A paper jam has occurred.

- Cause and Remedy
- Check to make sure that the size and thickness of the document are within the supported range of the scanner, and if the quality of the paper is appropriate. For cautions on handling documents, see "Documents," on p. 30.
  - Documents with rough surfaces may cause a paper feed error to occur. Scan one sheet at a time in the separation OFF mode. (See "Separation OFF Mode," on p. 36.)
  - Dirty or worn rollers inside the scanner may cause a paper jam. Clean the rollers if they are dirty. (See "Cleaning the Scanning Glass and Rollers," on p. 44.) Worn rollers must be replaced. Some rollers are replaceable. (See "Replacing the Rollers," on p. 53.) If the rollers are not replaceable, contact your local authorized Canon dealer or service representative to have the scanner serviced.
  - The Separation Roller gap is too wide. Adjust the Separation Roller gap. (See "Adjusting the Separation Roller Gap," on p. 56.)

**Condition A double feed error often occurs.**

Cause and Remedy A double feed error may occur when documents with different thicknesses are mixed. If you are using the CR-190i scanner, you can align the documents using the jogger.  
If the above-mentioned method is not effective or you are using the CR-135i scanner, adjust the Separation Roller gap. (See "Adjusting the Separation Roller Gap," on p. 56.)

**Condition MICR characters are not recognized correctly.**

Cause and Remedy

- The scanner cannot correctly read MICR characters if the magnetic heads are dirty. Clean the MICR magnetic heads. (See "Cleaning the Magnetic Heads," on p. 47.)
- If MICR characters cannot be recognized correctly after cleaning the heads, the MICR heads may be worn. Contact your local authorized Canon dealer or service representative to have the scanner serviced.
- The MICR text is on the back of the document. Load the side with the MICR characters face up in the document tray.

Other Causes

- Some of the MICR characters are scratched or missing. Splattered MICR ink or toner may also be the problem.

**Condition The imprinter is not printing correctly (missing imprint dots).**

Cause and Remedy Ink is clogged in the ink jet nozzle. Clean the ink jet nozzle. Cleaning the ink jet nozzle is recommended before using the CR-135i/CR-190i. (See "Cleaning the Ink Jet Nozzles," on p. 48.)

Other Causes The ink cartridge may be empty.

**Condition Documents get dirty when using the imprinter.**

Cause and Remedy Ink from the imprinter has been placed on the feed path. Clean the ink off the feed path. (See "Cleaning the Ink Jet Nozzles," on p. 48 and "Cleaning the Feed Path," on p. 42.)



## When the Scanned Image Is Not Normal

If there is a problem with the scanned image (the image is not sharp or stripes appear), one of the following conditions may be a probable cause. Check the following conditions, and take the appropriate action.

### The scanning glass or rollers are dirty.

If the scanning glass or rollers are dirty, the dirt will appear on the scanned image.

► Clean the scanning glass and rollers. For details, see "Cleaning the Scanning Glass and Rollers," on p. 44.

### The scan conditions are inappropriate.

If the scan conditions are inappropriate, the scanned image will not be sharp or will appear as dark.

► Check the brightness and other scanner settings.

If the scanned image is blurry or the document has not been scanned at all, the brightness may be set too high.

If the scanned image appears dark, the brightness may be set too low.

Also, check the settings on the driver and the software application.

### The driver or application does not run correctly.

If the document cannot be scanned correctly even if the scan conditions are adjusted, the driver or the application may not be functioning correctly.

► Reinstall the driver or application.

For details on how to install the driver, see "Installing the Software," on p. 19.

For details on how to install the application, see the applications instruction manual.

## Other Causes

Even if the computer may be recognizing the scanner correctly, and the driver and the application is installed correctly, scanning may not be performed correctly. If this happens, the interface card is not compatible. Use the recommended interface card.

If the above remedies do not rectify the problem, contact your local authorized Canon dealer or service representative to have the scanner serviced.

# Maintenance

This chapter describes how to clean and maintain the scanner.

## Daily Cleaning

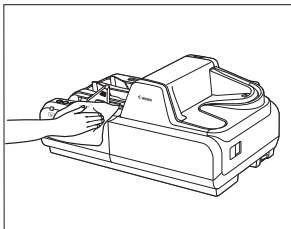
To ensure high-quality image scanning, regularly clean your CR-135i/CR-190i as described below.

### ⚠ CAUTION

- Before you clean the scanner, turn OFF the scanner and computer, and disconnect the power cord from the power outlet. Otherwise, it may cause an electrical shock.
- Never clean the scanner with any kind of organic solvent, such as alcohol, benzene, or paint thinner. This may cause a fire and electrical shock, or cause the exterior of the scanner to disfigure or discolor.
- Never spray mild detergent or water directly on the scanning glass. The spray could penetrate below the glass and contaminate the internal light source and lenses.

## Cleaning the Main Unit

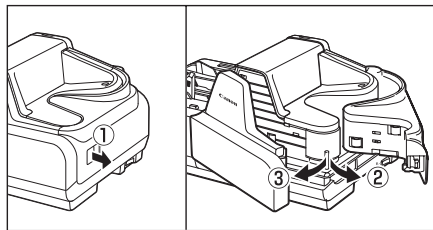
Wipe the scanner with a firmly wrung cloth, moistened slightly with water or mild detergent. Then, wipe off with a clean, dry cloth.



## Cleaning the Feed Path

If dirt appears on scanned documents, clean the feed path. Clean the feed path regularly.

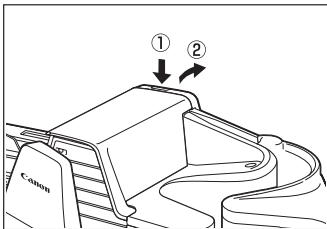
- 1 Pull the Open Button, and pull the Front Maintenance Cover open to the right and left.



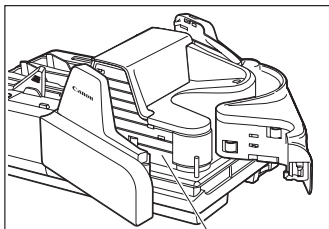
### ⚠ IMPORTANT

If you notice paper dust in the feed path when you open the Maintenance Cover, clean it out with a clean dry cloth or cotton swabs.

- 2** Press the Open Button, and push the Back Maintenance Cover open to the back.

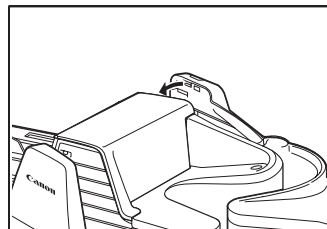


- 3** Wipe the feed path with a firmly wrung cloth, moistened slightly with water or mild detergent. Then, wipe off with a clean, dry cloth.

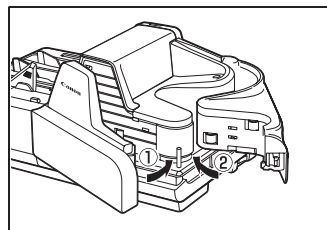


**Feed Path**

- 4** Close the Back Maintenance Cover.



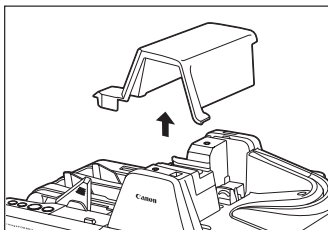
- 5** Close the Front Maintenance Cover in the order shown in the diagram below.



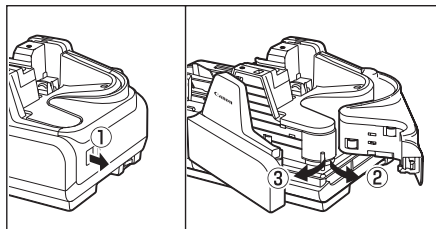
## Cleaning the Scanning Glass and Rollers

If stripes appear on scanned images or if dirt appears on scanned documents, clean the scanning glass and rollers. Clean the scanning glass and rollers regularly.

- 1 Remove the Top Cover.



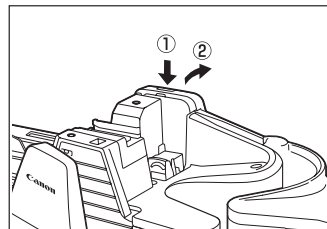
- 2 Pull the Open Button, and pull the Front Maintenance Cover open to the right and left.



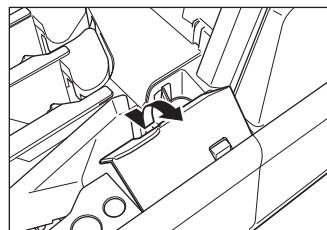
### ! IMPORTANT

If you notice paper dust in the feed path when you open the Maintenance Cover, clean it out with a clean dry cloth or cotton swabs.

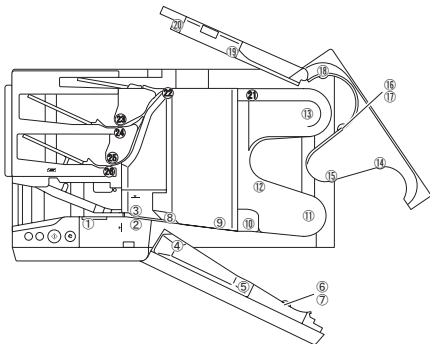
- 3 Press the Open Button, and push the Back Maintenance Cover open to the back.



- 4 Remove the Roller Cover.

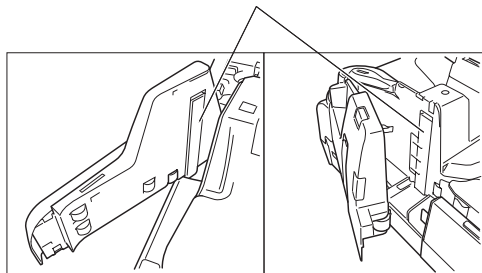


- 5** Spin the rollers while wiping them clean with a firmly wrung cloth dampened with water or a mild detergent.  
There are 26 roller positions, as shown in the diagram below.

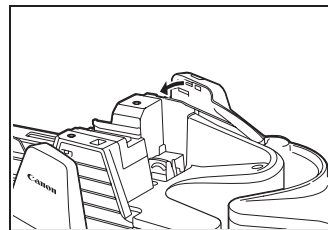


- 6** Use a clean dry cloth to clean the entire scanning glass.

Scanning Glass



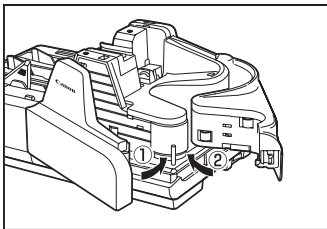
- 7** Close the Back Maintenance Cover.



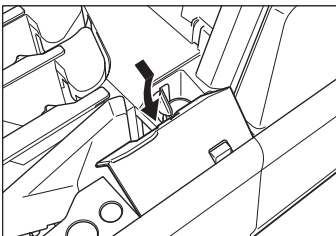
**NOTE**

- Use cotton swabs to clean the rollers in locations that are too narrow for your fingers.
- Roller in position ③ is turned by the roller in position ①. Turn the roller in position ① to wipe the rollers.
- Rollers in positions ⑧, ⑩, and ⑫ are turned by the roller in position ⑪. Turn the roller in position ⑪ to wipe the rollers.
- Rollers in positions ⑳ to ㉔ are turned by the roller in position ⑬. Turn the roller in position ⑬ to wipe the rollers.
- Rollers in positions ① to ③ are replaceable. (See "Replacing the Rollers," on p. 53.)

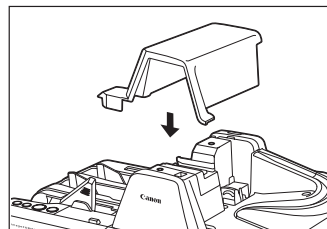
- 8** Close the Front Maintenance Cover in the order shown in the diagram below.



- 9** Replace the Roller Cover.



- 10** Carefully replace the Top Cover.



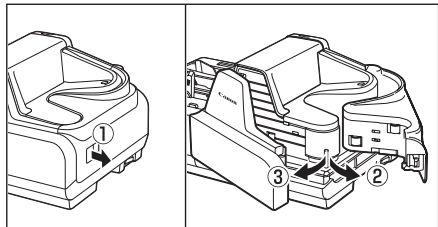
**! IMPORTANT**

If paper jams and double feeds (two papers being fed at the same time) still occur after cleaning the rollers, the rollers may be worn. The rollers need to be changed. Some rollers are replaceable. (See "Replacing the Rollers," on p. 53.) If the rollers are not replaceable, contact your local authorized Canon dealer or service representative to have the scanner serviced.

## Cleaning the Magnetic Heads

If the magnetic heads are dirty, then MICR characters cannot be scanned correctly. Periodically, clean the magnetic heads with a commercially available audio head cleaner.

- 1** Pull the Open Button, and pull the Front Maintenance Cover open to the right and left.

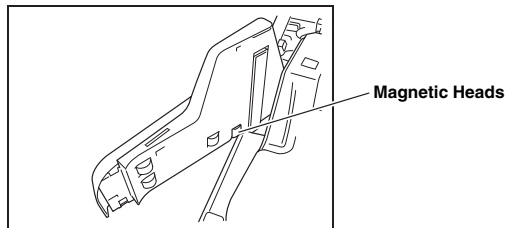


### **!** IMPORTANT

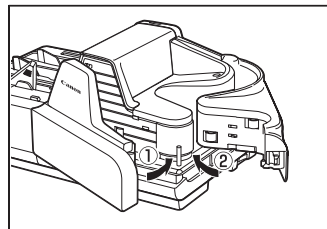
If you notice paper dust in the feed path when you open the Maintenance Cover, clean it out with a clean dry cloth or cotton swabs.

- 2** Use a commercially available audio head cleaner to clean the magnetic heads.

The magnetic heads are located in the positions shown in the diagram below.



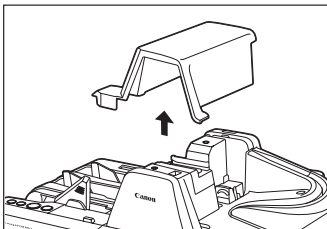
- 3** Close the Front Maintenance Cover in the order shown in the diagram below.



## Cleaning the Ink Jet Nozzles

Ink that collects around the ink jet nozzles may stain your documents or cause the text or bitmap to appear as scratched. Clean the area around the ink jet nozzles periodically. Cleaning the ink jet nozzles is also efficient action when the printed text or bitmap becomes faint.

- 1 Remove the Top Cover.

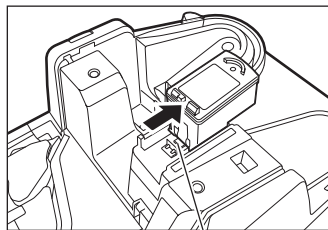


- 2 Remove the ink cartridge.

For more information, see "Replacing the Ink Cartridge," on p. 50.

- 3 Use the Built-in Nozzle Cleaning Pad to remove the ink from around the ink jet nozzles.

Swipe the ink cartridge 2 or 3 times on the Built-in Nozzle Cleaning Pad shown in the diagram below. If the text or bitmap still appear faint after this operation, replace the ink cartridge (See "Replacing the Ink Cartridge," on p. 50.)

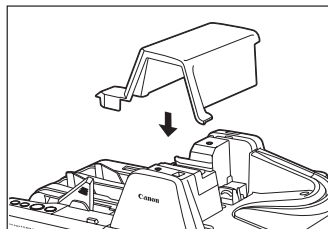


**Built-in Nozzle Cleaning Pad**

- 4 Set the ink cartridge.

For more information, see "Setting the Ink Cartridge and Adjusting the Print Position," on p. 23.

- 5 Carefully replace the Top Cover.





## Cleaning with the Cleaning Cards (U.S.A. Only)

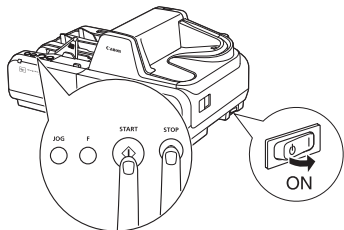
If a black stripe appears on the back-side of scanned images or if dirt appears on the paper documents upon scanning or for preventative measures, we recommend that you clean your Canon CR-Series scanner as needed with a cleaning card. Using a cleaning card will minimize the frequent cleaning as instructed in this manual.

It is best to perform a cleaning at beginning or end of the day. A cleaning card does not clean the ink jet nozzles, so please remove the ink cartridge and perform a nozzle cleaning (See "Cleaning the Ink Jet Nozzles," on p. 48.)

### ! IMPORTANT

- This operation is for U.S.A. Cleaning cards are available only in U.S.A.
- Contact your local authorized Canon dealer or service representative for the available cleaning card.

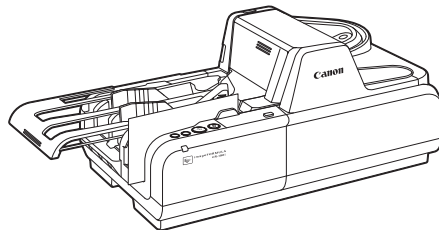
- 1** Turn OFF the scanner.
- 2** Disconnect the scanner and the computer.
- 3** Turn ON the scanner with pressing the START Button and the STOP Button.



### NOTE

If the scanner turned ON properly, the power LED continues to flash.

- 4** Pull the Eject Stopper.
- 5** Place the cleaning card in the document tray.



- 6** Press the START Button to start cleaning.
- 7** Please repeat steps 5 and 6.  
A typical cleaning is feeding the cleaning card 3 to 7 times. If the scanner is extremely dirty, you may need to use another cleaning card.
- 8** Turn OFF the scanner.
- 9** Connect the scanner and the computer.

### NOTE

- You cannot scan the document without the computer.
- Allow 1 to 2 minutes for the moisture on the Canon CR-Series scanner from the cleaning card to thoroughly dry before scanning documents.

## Maintenance

Make the following adjustments to maintain scanning quality.

### Replacing the Ink Cartridge

The ink cartridge needs to be replaced if the printed text becomes scratchy or faint even if you have cleaned the ink jet nozzle. Replace the ink cartridge according to the following procedure below.

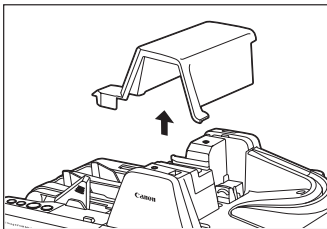
#### ! IMPORTANT

- The ink disposal tank must be replaced when the ink cartridge is replaced.
- To replace the ink cartridge, turn the scanner OFF before removing the Top Cover. After the ink cartridge is set, replace the Top Cover, and then turn the scanner back ON.
- Finish up the unpacked ink cartridge as soon as possible. More frequent cleaning of the ink cartridge is required if long time elapses after unpacking.

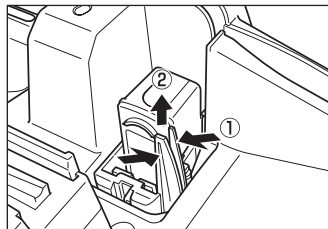
#### NOTE

- Use a Canon ink cartridge. (See "About the Ink Cartridge," on p. 23.)
- Do not use more than one cartridge by rotation. If you do so, applications cannot check the ink level precisely.

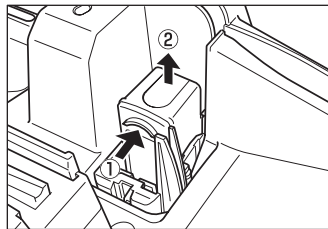
- 1** Remove the Top Cover.



- 2** Squeeze the Print Position Adjustment Lever, and lift it up to the top position.



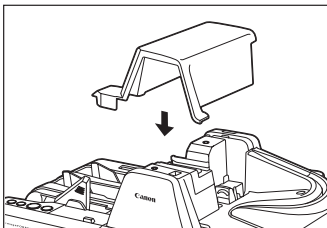
- 3** Push the ink cartridge backward, and then remove the ink cartridge.



#### ! CAUTION

Do not touch the ink jet nozzle right after imprinting. The nozzle may be very hot.

- 4** Set the ink cartridge.  
For more information, see "Setting the Ink Cartridge and Adjusting the Print Position," on p. 23.
- 5** Carefully replace the Top Cover.



## Replacing the Ink Disposal Tank

When the following conditions appear, you have to replace the ink disposal tank according to the following procedure.

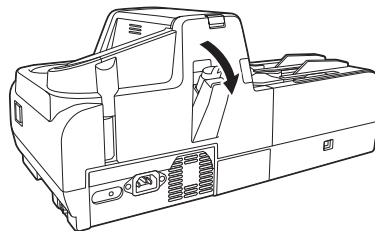
- **When the ink cartridge is replaced.**
- **When clumpy ink appears on the ink disposal tank as shown below.**



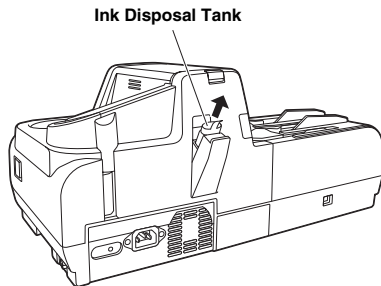
The replacement ink disposal tank is not included with the scanner. Purchase an ink disposal tank, as shown below.

Compatible ink disposal tank: 4623B002

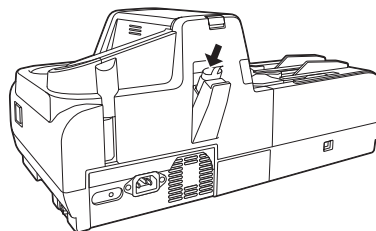
- 1** Open the Ink Disposal Tank Pocket.



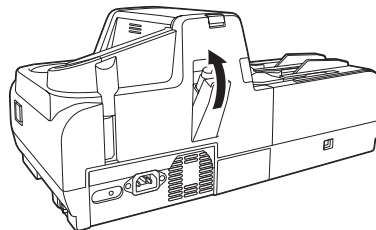
- 2** Remove the ink disposal tank.



- 3** Attach the ink disposal tank.



- 4** Close the Ink Disposal Tank Pocket.



**⚠ WARNING**

Do not print without the ink disposal tank. Doing so may cause a malfunction.

**📄 NOTE**

- Be careful not to get dirty with ink.
- When you discard the ink disposal tank, put it in the plastic bag in the box of the ink disposal tank.

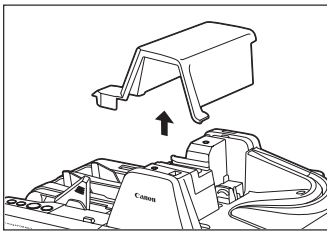
## Replacing the Rollers

When rollers are worn, paper jams and double feeds tend to occur. You can replace the rollers (Pickup Roller, Feed Roller, and Separation Roller) according to the following procedure.

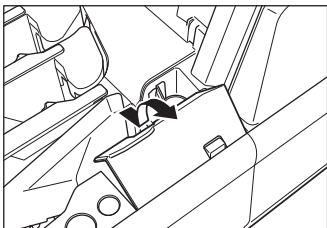
The exchange roller kit is not included with the scanner. Purchase an exchange roller kit separately, as shown below.

Compatible exchange roller kit: 4623B001

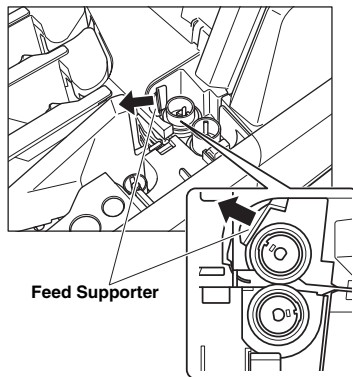
- 1** Remove the Top Cover.



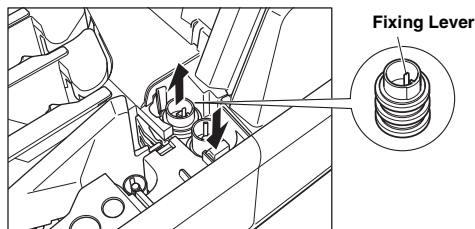
- 2** Remove the Roller Cover.



- 3** Open the Feed Supporter to the left.

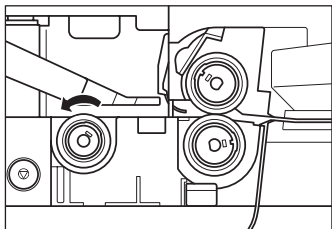


- 4** Pinch the Separation Roller at the rim and the fixing lever, and then remove it with pressing the Separation OFF Mode Button.

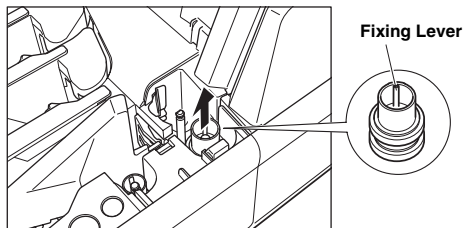


 **NOTE**

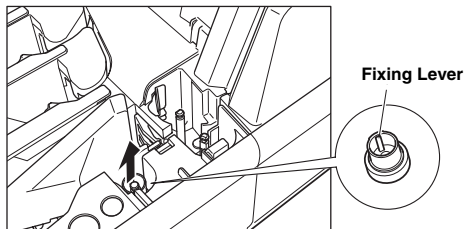
If the Separation Roller is not removed easily because of the fixing lever position, turn the Pickup Roller in anticlockwise direction by hand.



- 5** Pinch the Feed Roller at the rim and the fixing lever, and then remove it.



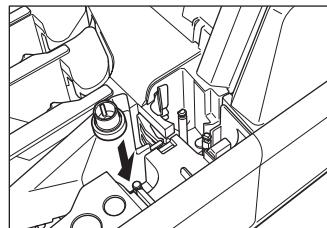
- 6** Pinch the Pickup Roller at the rim and the fixing lever, and then remove it.



 **NOTE**

If the Pickup Roller is not removed easily because of the fixing lever position, turn the Pickup Roller by hand.

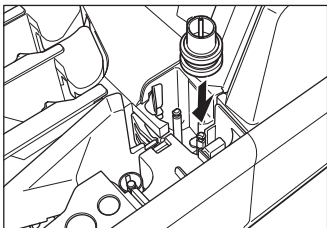
- 7** Attach the Pickup Roller.



 **IMPORTANT**

Push down the roller until it clicks into place.

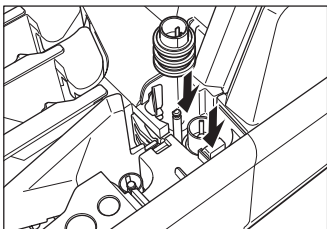
- 8** Attach the Feed Roller. Align the notch on the roller axis with the hole on the roller.



**!** **IMPORTANT**

Push down the roller until it clicks into place.

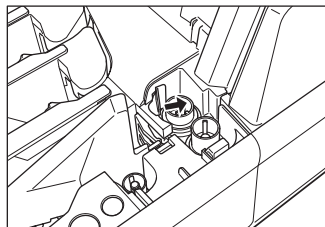
- 9** Attach the Separation Roller with pushing the Separation OFF Mode Button. Align the notch on the roller axis with the hole on the roller.



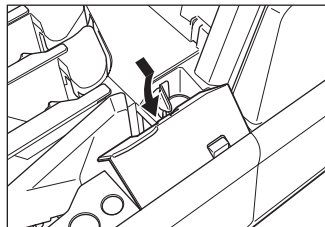
**!** **IMPORTANT**

Push down the roller until it clicks into place.

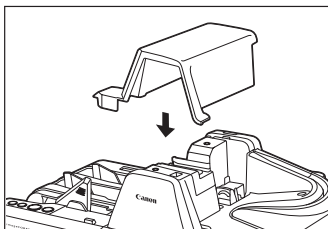
- 10** Close the Feed Supporter to the right.



- 11** Replace the Roller Cover.



- 12** Carefully replace the Top Cover.

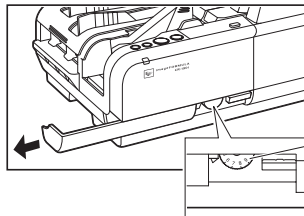


- 13** Adjust the Adjustment Dial to 5.  
For more information, see “Adjusting the Separation Roller Gap,” on p. 56.

## Adjusting the Separation Roller Gap

If double feed should occur too often, adjust the Separation Roller gap according to the following procedure.

- 1** Slide the Adjustment Dial Cover to the left.



### Adjustment Dial

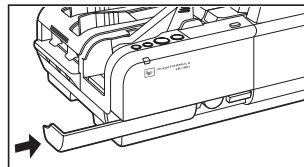
Turn the dial to the left to widen the gap, and turn it to the right to narrow the gap.

- 2** Adjust the Adjustment Dial.

Turn the Adjustment Dial to the right 3 clicks.

If documents are not fed after the above operation, turn the Adjustment Dial back to the left 1 click.

- 3** Slide the Adjustment Dial Cover to the right.



### **!** CAUTION

Do not use the Adjustment Dial any other time except when adjusting the Separation Roller gap. Turning the Adjustment Dial too much may damage the scanner.



## Specifications

### Scanner Specifications

Type	Desktop sheet feed
Document size	Height: 2.7" to 4.3" (68 to 108 mm) Length: 4.7" to 9.6" (120 to 245 mm) Thickness: 0.003" to 0.008" (0.08 to 0.20 mm) Weight: 17 to 40 lb bond (64 to 157 g/m <sup>2</sup> )
Document feeding	Automatic / Not separate
Scanning method	Contact image sensor (CMOS)
Light source	LED
Scanning side	Simplex/Duplex
Scanning mode	Black-and-white, Fine text filtering, Error diffusion, 256 level grayscale, 16 level grayscale
Scanning resolution (primary scan lines x secondary scan lines)	100 x 100 dpi, 120 x 120 dpi, 150 x 150 dpi, 200 x 200 dpi, 240 x 240 dpi, and 300 x 300 dpi
Scanning speed	CR-135i: 135 cpm (American checks) CR-190i: 190 cpm (American checks)
Automatic feeder capacity	Load limit of less than 1.0" (25 mm) (within the load limit mark)
Automatic document feed capacity	Up to 250 sheets
Interface	Hi-Speed USB 2.0
Other functions	Automatic paper size detection, Ultrasonic double feed detection, Dropout color, Deskek

Dimensions	8.4" (H) x 18.7" (W) x 10.7" (D) (214 mm (H) x 476 mm (W) x 272 mm (D))
Weight	CR-135i: Approximately 17.1 lb (8.0 kg) CR-190i: Approximately 18.5 lb (8.4 kg)
Power requirement	AC 120V (60 Hz) or AC 220-240V (50/60 Hz)
Power consumption	CR-135i: 120V model Scanning: 53.1W or less Sleep mode: 3.8W or less 220-240V model Scanning: 50.3W or less Sleep mode: 4.5W or less CR-190i: 120V model Scanning: 56.1W or less Sleep mode: 3.9W or less 220-240V model Scanning: 52.8W or less Sleep mode: 4.7W or less
Noise	Less than 72 dB
Operating environment	Temperature: 50°F to 90.5°F (10°C to 32.5°C) Humidity: 20% to 80% RH

- Use the recommended operating environment for the ink cartridge when using the imprinter.
- You can use the functions noted above if your software supports them.
- These functions may not work depending on your computer's capabilities and the software you are using.

Specifications are subject to change without notice.

# Index

- A**
- Adjusting the Print Position ..... 23
  - Adjustment Dial ..... 15, 56
  - Adjustment Dial Cover ..... 15
  - Air Vent ..... 16
  - Amount loaded ..... 32
- B**
- Back Maintenance Cover ..... 15
  - Built-in Nozzle Cleaning Pad ..... 14, 48
- C**
- Cleaning
    - Feed path ..... 42
    - Main unit ..... 42
  - Cleaning Card ..... 49
  - Connector ..... 16
- D**
- Daily Cleaning ..... 42
  - Documents ..... 30
    - Document ..... 30
    - Envelope ..... 31
    - How to place documents ..... 32
  - Double Feed Detection ..... 32
- E**
- Eject Pocket ..... 15, 35
  - Eject Stopper ..... 15, 32
  - Exterior Dimensions ..... 16
- F**
- Features of the CR-135i/CR-190i ..... 12
  - Feeding Trouble ..... 39
  - Flapper ..... 35
  - Front Maintenance Cover ..... 14
  - Function Button ..... 14
- H**
- Handling ..... 9
- I**
- Ink Cartridge ..... 14, 23, 50
  - Ink Disposal Tank ..... 52
  - Ink Disposal Tank Pocket ..... 16
  - Ink Jet Nozzle ..... 48
  - Installation Location ..... 10
- J**
- JOG Button ..... 14, 34
- L**
- Load Limit Mark ..... 32
- M**
- Magnetic head ..... 47
  - Magnetic Head for MICR ..... 14
  - Maintenance ..... 50
  - Moving the Scanner ..... 11
- N**
- Number of pages loaded ..... 32

## O

Operating Environment .....	18
Operation Buttons .....	14

## P

Power Cord .....	13, 21
Power Cord Connector .....	16
Power Supply .....	11
Power Switch .....	14
Print Position Adjustment Lever .....	23, 50

## R

Ranger .....	27
Recognizing the scanner .....	22
Roller Cover .....	14
Rollers .....	44, 53

## S

Scanner Unit .....	14, 15
Scanning Glass .....	44
Scanning Utility .....	19, 25
Separates documents .....	35
Separation OFF Mode .....	36
Separation OFF Mode Button .....	15, 36
Setup Disc .....	13
Software	
How to Use the Software .....	25
Install .....	19, 27
Uninstall .....	28
Specifications .....	57

## T

Top Cover .....	15
Troubleshooting .....	37
Turning OFF the Power .....	22
Turning ON the Power .....	21

## U

Unpacking the scanner .....	13
USB Connections .....	20, 37
USB Connector .....	16



**CANON ELECTRONICS INC.**

1248, SHIMOKAGEMORI, CHICHIBU-SHI, SAITAMA 369-1892, JAPAN

**CANON U.S.A. INC.**

ONE CANON PLAZA, LAKE SUCCESS, N.Y. 11042, U.S.A.

**CANON CANADA INC.**

6390 DIXIE ROAD, MISSISSAUGA, ONTARIO L5T 1P7, CANADA

**CANON EUROPA N.V.**

BOVENKERKERWEG 59-61, P.O.BOX 2262, 1180 EG AMSTELVEEN, THE NETHERLANDS

**CANON LATIN AMERICA, INC.**

703 WATERFORD WAY, SUITE 400 MIAMI, FLORIDA 33126, U.S.A.

**CANON SINGAPORE PTE. LTD.**

1 HARBOUR FRONT AVENUE #04-01, KEPPEL BAY TOWER, SINGAPORE 098632

**CANON HONGKONG COMPANY LTD.**

19TH FLOOR, THE METROPOLIS TOWER, 10 METROPOLIS DRIVE, HUNGHOM, KOWLOON, HONG KONG.

**CANON KOREA BUSINESS SOLUTIONS INC.**

168-12 SAMSEONG-DONG, GANGNAM-GU, SEOUL, KOREA

## Free Manuals Download Website

<http://myh66.com>

<http://usermanuals.us>

<http://www.somanuals.com>

<http://www.4manuals.cc>

<http://www.manual-lib.com>

<http://www.404manual.com>

<http://www.luxmanual.com>

<http://aubethermostatmanual.com>

Golf course search by state

<http://golfingnear.com>

Email search by domain

<http://emailbydomain.com>

Auto manuals search

<http://auto.somanuals.com>

TV manuals search

<http://tv.somanuals.com>