

**Canon**

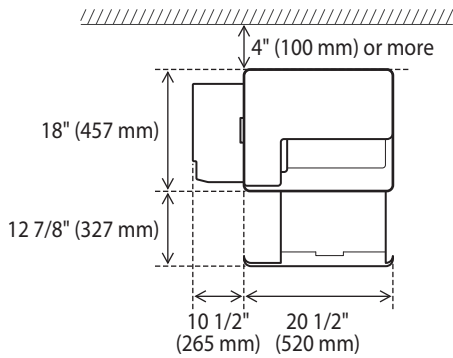
**imageRUNNER**  
**1 4 3 5 P**

**Getting Started**

# Contents

Installation Requirements .....	3
About the Supplied Manuals .....	3
Navigating the Menu and Text Input Method .....	4
Turning ON/OFF the Power .....	4
Specifying the Initial Settings .....	4
Choosing the Method to Connect the Machine to the Computer .....	5
Connecting via a LAN .....	5
Connecting via a USB Cable .....	5
Setting a Paper Size and Type .....	6
Perform Useful Tasks .....	6
Clearing Paper Jams .....	7
Replacing Toner Cartridge .....	8

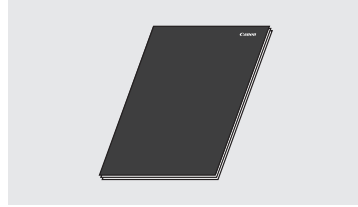
## Installation Requirements



## About the Supplied Manuals

### ① Getting Started (This manual):

Read this manual first. This manual describes the basic machine settings, operations, and cautions. Be sure to read this manual before using the machine.



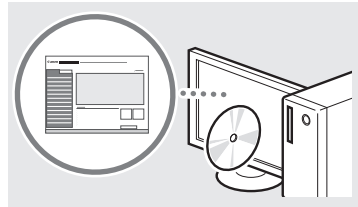
### ② Driver installation manuals (Included with the drivers):

Read these manuals next. These manuals describe software installation.



### ③ e-Manual (User Manual CD-ROM):

Read the desired chapter to suit your needs. The e-Manual is categorized by subject to find desired information easily.



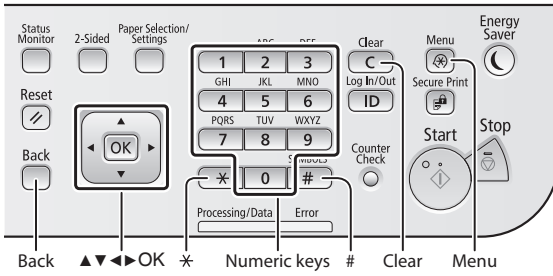
### Viewing the e-Manual from the CD-ROM

- 1 Insert the User Manual CD-ROM in your computer.
- 2 Select the language.
- 3 Click [Display].

† Depending on the operating system you are using, a security protection message appears.

† If the User Manual CD-ROM has been already inserted in your computer and the setup screen is not displayed, remove the CD-ROM and insert it again.

## Navigating the Menu and Text Input Method



### Navigating the Menu

#### Item selection or moving the cursor among the menu items

Select an item with [▲] or [▼].  
Proceed to the next hierarchy with [OK] or [▶]. Return to the previous hierarchy with [◀] (Back) or [◀].

#### Setting confirmation

Press [OK]. However, when <Apply> appears on the display, select <Apply>, and then press [OK].

### Text Input Method

#### Changing entry mode

Press [✳] to change the entry mode. You can also change the entry mode on the display by selecting <Entry Mode> and pressing [OK].

Entry mode	Available text
<A>	Uppercase alphabetic letters and symbols
<a>	Lowercase alphabetic letters and symbols
<12>	Numbers

#### Entering text, symbols, and numbers

Enter with the numeric keys or [#].

#### Moving the cursor (Entering a space)

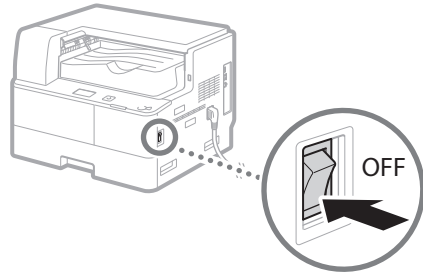
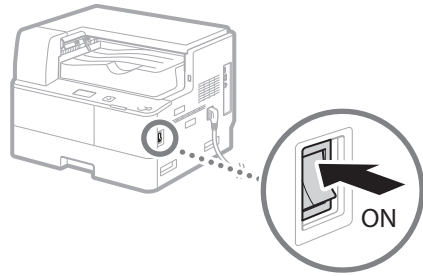
Move with [◀] or [▶]. Move the cursor to the end of the text and press [▶] to enter a space.

#### Deleting characters

Delete with [C]. Pressing and holding [C] deletes all characters.

	Entry mode: <A>	Entry mode: <a>	Entry mode: <12>
1	@ . - _ /		1
2	ABC	abc	2
3	DEF	def	3
4	GHI	ghi	4
5	JKL	jkl	5
6	MNO	mno	6
7	PQRS	pqrs	7
8	TUV	tuv	8
9	WXYZ	wxyz	9
0	(Not available)		0
#	(space) @ . / - _ ! ? & \$ % # ( ) [ ] { } < > * + = , ; : ' ^ ` \ ~		(Not available)

## Turning ON/OFF the Power



- Make sure that the power plug is firmly inserted into the power outlet.
- Do not connect the USB cable at this time. Connect it when installing software.

## Specifying the Initial Settings

Follow the instructions on the screen to perform the following:

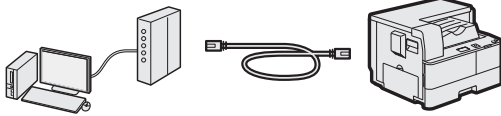
- Set the language
- Set the country and region
- Insert the paper into the paper drawer
- Set the time zone
- Set the date and time

For details on navigating the menu and how to input the numbers, see "Navigating the Menu and Text Input Method" (P.4).

## Choosing the Method to Connect the Machine to the Computer

### ● Connecting via a LAN

You can connect the machine to the computer through a wired LAN router. Use a LAN cable to connect the machine to the router.



† Make sure that there are ports available on the router to connect the machine and the computer.

† Have a Category 5 or higher twisted pair LAN cable ready.

### ● Connecting via a USB cable

You can connect the machine to the computer using a USB cable.

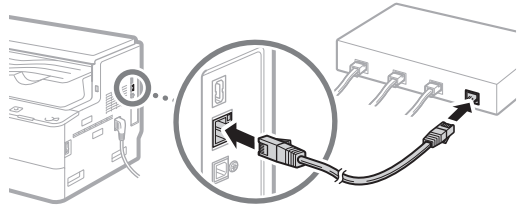


† Make sure that the USB cable you use has the following mark.



## Setting Up the LAN Connection

### 1 Connect the LAN cable.



The IP address will be automatically configured in 2 minutes. If you want to set the IP address manually, see the following items.

➔ e-Manual "Network" ▶ "Connecting to a Network" ▶ "Setting IP Addresses"

### 2 Download the appropriate drivers from the Canon website (<http://www.canon.com/>).

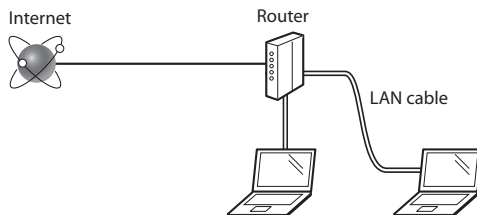
### 3 Install the drivers on your computer.

† For details on the installation procedures, see the driver installation manuals that are included with the drivers.

➔ Proceed to "Setting a Paper Size and Type" (P.6).

## Connecting via a LAN

### Checking Before the Setup



#### Are the computer and the router properly connected using a LAN cable?

For more information, see the instruction manual for the network device you are using, or contact the networking device manufacturer.

#### Have the network settings on the computer been completed?

If the computer is not properly configured, you may not use the wired LAN connection even after completing the following settings.

#### NOTE

- When you connect to a network environment that is not security protected, your personal information could be disclosed to third parties. Please use caution.
- If you connect through a LAN in the office, contact your network administrator.

## Connecting via a USB Cable

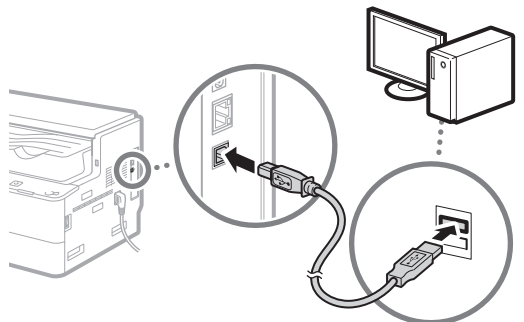
Connect the USB cable after installing the drivers.

### 1 Download the appropriate drivers from the Canon website (<http://www.canon.com/>).

### 2 Install the drivers on your computer.

† For details on the installation procedures, see the driver installation manuals that are included with the drivers.

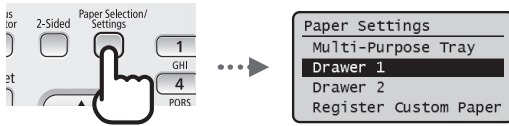
### 3 Connect the USB cable.



➔ Proceed to "Setting a Paper Size and Type" (P.6).

## Setting a Paper Size and Type

Follow the instructions on the screen to set the paper size and type.



## Perform Useful Tasks

A variety of functions are available. An overview of some useful functions is provided below.

### Print

#### Enlarged/Reduced Printing

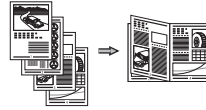
#### 2-Sided Printing

#### Reduced Layout

You can reduce multiple documents to print them onto one sheet.



#### Booklet Printing



#### Poster Printing

#### Watermark Printing

#### Combining and Printing Multiple Documents

#### Selecting a "Profile"

### Network Settings

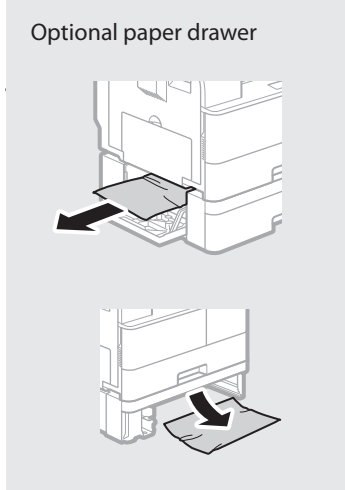
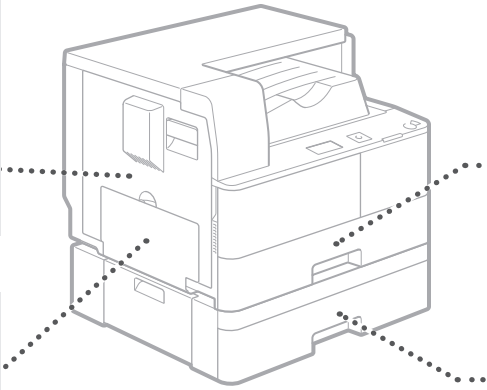
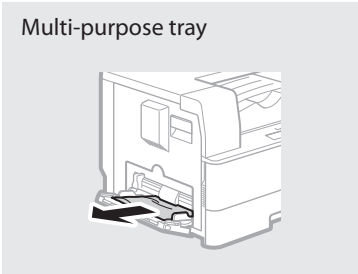
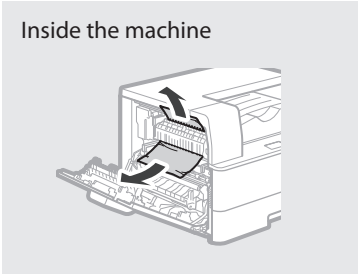
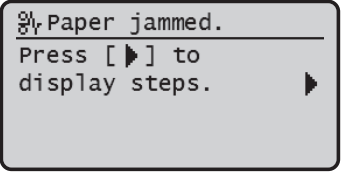
This machine comes equipped with a network interface that you can construct a network environment easily. You can print documents from all computers which are connected with the machine. The machine supports to increase work efficiency as a shared machine in the office.

### Remote UI

You can understand the condition of the machine from the computers on the network. You can access the machine and manage jobs or specify various settings via network.

## Clearing Paper Jams

If the following screen appears, a paper jam has occurred inside the machine. Follow the procedure displayed on the screen to remove the jammed paper. This manual indicates only areas where paper jams occur. For details on the procedures, see the e-Manual.



## Replacing Toner Cartridge

Toner cartridges are consumables. When the toner becomes nearly empty or has run out completely in the middle of a job run, a message appears on the screen, or the following problems may occur. Take the appropriate action accordingly.

### When a Message Appears

When the toner becomes nearly empty or has run out in the middle of a job run, a message appears on the screen.

Message	When the message is displayed on the screen	Description and solutions
<Toner Low (Replacement Not Yet Needed)>	The toner cartridge needs to be replaced soon.	Make sure that you have a replacement toner cartridge ready. We recommend checking the level of remaining toner before printing high-volume documents. ➔ e-Manual "Replacing the Toner Cartridge"
<Replace toner cart.>	The toner cartridge has reached the end of its lifetime.	Replace the toner cartridge. ➔ e-Manual "Replacing the Toner Cartridge"

### If Printouts are Poor in Quality

If your printouts begin to show any of the characteristics below, the toner cartridge is nearly empty. Replace the nearly empty toner cartridge even if no message is displayed.

White streaks appear



Partially faded



Density is uneven



Toner smudges and splatters appear



Printouts are grayish





## Symbols Used in This Manual

### WARNING

Indicates a warning concerning operations that may lead to death or injury to persons if not performed correctly. To use the machine safely, always pay attention to these warnings.

### CAUTION

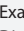
Indicates a caution concerning operations that may lead to injury to persons if not performed correctly. To use the machine safely, always pay attention to these cautions.

### IMPORTANT

Indicates operational requirements and restrictions. Be sure to read these items carefully to operate the machine correctly, and avoid damage to the machine or property.

## Keys and Buttons Used in This Manual

The following symbols and key names are a few examples of how keys to be pressed are expressed in this manual.

- Operation panel keys: [Key icon], [Key icon] + (Key name)  
Example:  (Back)
- Display: <Specify destination.>
- Buttons and items on the computer display: [Preferences]

## Important Safety Instructions

Please read these "Important Safety Instructions" in this manual and in the e-Manual thoroughly before operating the machine. As these instructions are intended to prevent injury to the user or other persons or destruction of property, always pay attention to these instructions. Also, since it may result in unexpected accidents or injuries, do not perform any operation unless otherwise specified in the manuals. Improper operation or use of this machine could result in personal injury and/or damage requiring extensive repair that may not be covered under your Limited Warranty.

## Installation

### WARNING

- Do not install the machine in the following locations. Doing so may result in personal injury, fire or electrical shock.
  - A location where the ventilation slots are blocked (too close to walls, beds, rugs, or similar objects)
  - A damp or dusty location
  - A location exposed to direct sunlight or outdoors
  - A location subject to high temperatures
  - A location exposed to open flames
  - Near alcohol, paint thinners or other flammable substances
- Do not connect unapproved cables to this machine. Doing so may result in a fire or electrical shock.
- Do not place necklaces and other metal objects or containers filled with liquid on the machine. If foreign substances come in contact with electrical parts inside the machine, it may result in a fire or electrical shock.
- When installing and removing the optional accessories, be sure to turn OFF the power, unplug the power plug, and then disconnect all the interface cables and power cord from the machine. Otherwise, the power cord or interface cables may be damaged, resulting in a fire or electrical shock.
- Do not use near any medical equipment. Radiowaves emitted from this machine may interfere with medical equipment, which may cause a malfunction and result in serious accidents.
- If any foreign substance falls into this machine, unplug the power plug from the AC power outlet and contact your local authorized Canon dealer.

### IMPORTANT

- This machine generates a slight amount of ozone, etc. during normal use. Although sensitivity to ozone, etc. may vary, this amount is not harmful. Ozone, etc. may be more noticeable during extended use or long production runs, especially in poorly ventilated rooms. It is recommended that the room where the machine operates be appropriately ventilated to maintain a comfortable working environment. Also avoid locations where people would be exposed to emissions from the machine.
- Machines with a hard disk may not operate properly when used at high altitudes of about 3,000 meters above sea level, or higher.

## Power Supply

### WARNING

- Do not use power cords other than the one provided, as this may result in a fire or electrical shock.
- The provided power cord is intended for use with this machine. Do not connect the power cord to other devices.
- Do not modify, pull, forcibly bend, or perform any other act that may damage the power cord. Do not place heavy objects on the power cord. Damaging the power cord may result in a fire or electrical shock.
- Do not plug in or unplug the power plug with wet hands, as this may result in an electrical shock.
- Do not use extension cords or multi-plug power strips with the machine. Doing so may result in a fire or electrical shock.
- Do not wrap the power cord or tie it in a knot, as this may result in a fire or electrical shock.
- Insert the power plug completely into the AC power outlet. Failure to do so may result in a fire or electrical shock.
- Remove the power plug completely from the AC power outlet during a thunder storm. Failure to do so may result in a fire, electrical shock, or damage to the machine.

### CAUTION

- Install this machine near the power outlet and leave sufficient space around the power plug so that it can be unplugged easily in an emergency.

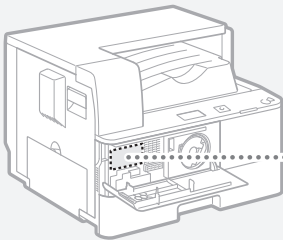
## Handling

### ⚠ WARNING

- Immediately unplug the power plug from the AC power outlet and contact an authorized Canon dealer if the machine makes an unusual noise, emits an unusual smell, or emits smoke or excessive heat. Continued use may result in a fire or electrical shock.
- Do not disassemble or modify this machine. There are high-voltage and high-temperature components inside the machine which may result in a fire or electrical shock.
- Place the machine where children will not come in contact with the power cord and other cables or internal and electrical parts. Failure to do so may result in unexpected accidents.
- Do not use flammable sprays near this machine. If flammable substances come into contact with electrical parts inside this machine, it may result in a fire or electrical shock.
- When plugging or unplugging a USB cable when the power plug is plugged into an AC power outlet, do not touch the metal part of the connector, as this may result in an electrical shock.
- If you are using a cardiac pacemaker:  
This machine generates a low level magnetic flux. If you use a cardiac pacemaker and feel abnormalities, please move away from this machine and consult your physician immediately.

### ⚠ CAUTION

- For your safety, please unplug the power cord if the machine will not be used for a long period of time.
- Use caution when opening and closing covers to avoid injury to your hands.
- Keep hands and clothing away from the rollers in the output area. If the rollers catch your hands or clothing, this may result in personal injury.
- The inside of the machine and the output slot is very hot during and immediately after use. Avoid contact with these areas to prevent burns. Also, printed paper may be hot immediately after being output, so use caution when handling it. Failure to do so may result in burns.
- This machine is confirmed as a Class 1 Laser product in IEC60825-1:2007. The laser beam can be harmful to the human body. The laser beam is confined in the laser scanner unit by a cover, so there is no danger of the laser beam escaping during normal machine operation. Read the following remarks and instructions for safety.
  - Never open covers other than those indicated in this manual.
  - Do not remove the caution label attached to the machine.



- If you operate the machine in manners other than the control, adjustment, and operating procedures prescribed in this manual, this may result in hazardous radiation exposure.
- If the laser beam should escape and enter your eyes, exposure may cause damage to your eyes.

## Maintenance and Inspections

### ⚠ WARNING

- Before cleaning, turn OFF the power and unplug the power plug from the AC power outlet. Failure to do so may result in a fire or electrical shock.
- Unplug the power plug periodically and clean with a dry cloth to remove dust and grime. Accumulated dust may absorb humidity in the air and may result in a fire if it comes into contact with electricity.
- Use a damp, well wrung-out cloth to clean the machine. Dampen cleaning cloths with water only. Do not use alcohol, benzenes, paint thinners, or other flammable substances. Do not use tissue paper or paper towels. If these substances come into contact with electrical parts inside the machine, they may generate static electricity or result in a fire or electrical shock.
- Check the power cord and plug periodically for damage. Check the machine for rust, dents, scratches, cracks, or excessive heat generation. Use of poorly-maintained equipment may result in a fire or electrical shock.

## Consumables

### ⚠ WARNING

- Do not dispose of used toner cartridges and drum units in open flames. Also, do not store toner cartridges, drum units, or paper in a location exposed to open flames. This may cause the toner to ignite, and result in burns or fire.
- If you accidentally spill or scatter toner, carefully wipe up the loose toner with a damp, soft cloth and avoid inhaling any toner dust. Do not use a vacuum cleaner that is not equipped with safety measures to prevent dust explosions to clean up loose toner. Doing so may cause damage to the vacuum cleaner or result in a dust explosion due to static discharge.

### ⚠ CAUTION

- Use caution not to inhale any toner. If you should inhale toner, consult a physician immediately.
- Use caution so that toner does not get into your eyes or mouth. If toner should get into your eyes or mouth, immediately wash with cold water and consult a physician.
- Use caution so that toner does not come into contact with your skin. If it should, wash with soap and cold water. If there is any irritation on your skin, consult a physician immediately.
- Keep the toner cartridges and other consumables out of the reach of small children. If toner is ingested, consult a physician or poison control center immediately.
- Do not disassemble or modify the toner cartridges. Doing so may cause the toner to scatter.
- Remove the sealing tape of the toner cartridge completely without using excessive force. Doing otherwise may cause the toner to scatter.

### Product Name

Safety regulations require the product's name to be registered. In some regions where this product is sold, the following name(s) in parenthesis may be registered instead.

imageRUNNER 1435P (F193036)

### Legal Limitations on the Usage of Your Product and the Use of Images

Using your product to scan, print or otherwise reproduce certain documents, and the use of such images as scanned, printed or otherwise reproduced by your product, may be prohibited by law and may result in criminal and/or civil liability. A non-exhaustive list of these documents is set forth below. This list is intended to be a guide only. If you are uncertain about the legality of using your product to scan, print or otherwise reproduce any particular document, and/or of the use of the images scanned, printed or otherwise reproduced, you should consult in advance with your legal advisor for guidance.

- Paper Money
- Traveler's Checks
- Money Orders
- Food Stamps
- Certificates of Deposit
- Passports
- Postage Stamps (canceled or uncanceled)
- Immigration Papers
- Identifying Badges or Insignias
- Internal Revenue Stamps (canceled or uncanceled)
- Selective Service or Draft Papers
- Bonds or Other Certificates of Indebtedness
- Checks or Drafts Issued by Governmental Agencies
- Stock Certificates
- Motor Vehicle Licenses and Certificates of Title
- Copyrighted Works/Works of Art without Permission of Copyright Owner

### FCC (Federal Communications Commission) Users in the U.S.A.

This device complies with Part 15 of the FCC Rules.

Operation is subject to the following two conditions:

1. This device may not cause harmful interference, and
2. this device must accept any interference received, including interference that may cause undesired operation.

This equipment has been tested and found to comply with the limits for a Class B digital device, pursuant to Part 15 of the FCC Rules. These limits are designed to provide reasonable protection against harmful interference in a residential installation. This equipment generates, uses, and can radiate, radio frequency energy and, if not installed and used in accordance with the instructions, may cause harmful interference to radio communications. However, there is no guarantee that interference will not occur in a particular installation.

If this equipment does cause harmful interference to radio or television reception, which can be determined by turning the equipment OFF and ON, the user is encouraged to try to correct the interference by one or more of the following measures:

- Reorient or relocate the receiving antenna.
- Increase the separation between the equipment and receiver.
- Connect the equipment to an outlet on a circuit different from that to which the receiver is connected.
- Consult the dealer or an experienced radio/TV technician for help.

Use of shielded cables are required to comply with Class B limits in Subpart B of Part 15 of the FCC Rules.

Do not make any changes or modifications to the equipment unless otherwise specified in this manual. If you make such changes or modifications, you could be required to stop operation of the equipment.

If your equipment malfunctions, please contact your local authorized Canon dealer from whom you purchased the equipment (if under warranty), or with whom you have a servicing contact. If you are not sure who to contact, and have both purchased and are using the equipment in the U.S.A., please refer to the "SUPPORT" page on Canon U.S.A.'s Web site (<http://www.usa.canon.com>).

Canon U.S.A., Inc.

One Canon Park, Melville, NY 11747, U.S.A.

TEL No. 1-800-OK-CANON

## Laser Safety

This product complies with 21 CFR Chapter 1 Subchapter J as a Class I laser product under the U.S. Department of Health and Human Services (DHHS) Radiation Performance Standard according to the Radiation Control for Health and Safety Act of 1968. Also, this product is certified as a Class 1 laser product under IEC60825-1: 2007. This means that the product does not produce hazardous laser radiation.

Since radiation emitted inside the product is completely confined within protective housings and external covers, the laser beam cannot escape from the machine during any phase of user operation. Do not remove protective housings or external covers, except as directed by the equipment's manual.

This product includes laser diode.

[Maximum Output 8 mW, Wavelength 785-800 nm]

The label shown below is attached to the inside of the machine, behind the front cover.



### CAUTION

Use of controls, adjustments, or performance of procedures other than those specified in the manuals for this machine may result in hazardous radiation exposure.

## **CANON imageRUNNER 1435P LIMITED WARRANTY**

Canon U.S.A., Inc. or Canon Canada Inc. (as applicable, "Canon") warrants the imageRUNNER 1435P product and Canon brand options designed for use with the imageRUNNER product (collectively the "Product") to be free from defects in workmanship and materials under normal use and service for a period of 90 days after delivery to the original purchaser ("Purchaser") or 100,000 prints or copies (or a combination of both), whichever comes first. During such warranty period, Canon shall replace, without charge, any defective part with a new or comparable rebuilt part. This warranty shall not extend to consumables such as paper, chemicals, and toner as to which there shall be no warranty or replacement. Warranty replacement shall not extend the original warranty period of the Product.

This limited warranty shall only apply if the Product is used in conjunction with compatible computers, peripheral equipment and software. Canon shall have no responsibility for such items except for compatible Canon brand peripheral equipment covered by a separate warranty ("Separate Warranty"). Repairs of such Canon brand peripheral equipment shall be governed by the terms of the Separate Warranty. Non-Canon brand equipment that may be distributed with the Product is sold "AS IS" and without warranty of any kind by Canon, including any implied warranty regarding merchantability or fitness for a particular purpose, and all such warranties are disclaimed. The sole warranty, if any, with respect to such non-Canon brand items is given by the supplier or producer thereof. For further information on software, see below.

This warranty shall be void and of no force and effect if the Product is damaged as a result of (a) abuse, neglect, mishandling, alteration, electric current fluctuation or accident, (b) improper use, including failure to follow operating or maintenance instructions or environmental conditions prescribed in Canon's operator's manual or other documentation, (c) installation or repair by other than authorized service representatives qualified by Canon who are acting in accordance with Canon's service bulletins, (d) use of supplies or parts (other than those distributed by Canon) which damage the Product or cause abnormally frequent service calls or service problems, or (e) use of the Product with non-compatible computers, peripheral equipment or software, including the use of the Product in any system configuration not recommended in any manual distributed with the Product. Nor does this warranty extend to any Product on which the original identification marks or serial numbers have been defaced, removed, or altered.

ANY SOFTWARE THAT IS DISTRIBUTED WITH THE PRODUCT AND HAS AN ASSOCIATED END USER AGREEMENT IS LICENSED, WARRANTED AND PROVIDED ACCORDING TO THE TERMS OF THAT AGREEMENT, INCLUDING ANY LIMITATIONS AND DISCLAIMERS THEREIN. SUCH SOFTWARE IS SOLD WITHOUT WARRANTY OF ANY KIND BY CANON. PLEASE CONTACT CANON IMMEDIATELY IF YOU HAVE NOT RECEIVED A COPY OF THE SOFTWARE SUPPLIER'S END USER AGREEMENT. CANON RECOMMENDS THAT DATA STORED ON THE PRODUCT'S HARD DISK DRIVE BE DUPLICATED OR BACKED UP TO PREVENT ITS LOSS IN THE EVENT OF FAILURE OR OTHER MALFUNCTION OF THE HARD DISK DRIVE.

THE ABOVE WARRANTIES ARE IN LIEU OF ALL OTHER WARRANTIES AND CONDITIONS, EXPRESS OR IMPLIED, INCLUDING ANY IMPLIED WARRANTIES AND CONDITIONS REGARDING MERCHANTABILITY OR FITNESS FOR A PARTICULAR PURPOSE, RELATING TO THE USE OR PERFORMANCE OF A PRODUCT OR ANY ASSOCIATED COMPONENT, AND ALL SUCH OTHER WARRANTIES AND CONDITIONS ARE DISCLAIMED. NO OTHER EXPRESS WARRANTY, CONDITION OR GUARANTY, EXCEPT AS MENTIONED ABOVE, GIVEN BY ANY PERSON, FIRM OR CORPORATION WITH RESPECT TO THE PRODUCT SHALL BIND CANON ANY SUPPLIER OR ANY AUTHORIZED SERVICE PROVIDER. NO WARRANTY IS GIVEN ON ANY USED PRODUCT.

NEITHER CANON OR ITS SUPPLIERS NOR ANY AUTHORIZED SERVICE PROVIDER SHALL BE LIABLE FOR PERSONAL INJURY OR PROPERTY DAMAGE (UNLESS CAUSED SOLELY AND DIRECTLY BY THE NEGLIGENCE OF CANON OR ANY AUTHORIZED SERVICE PROVIDER), LOSS OF REVENUE OR PROFIT, FAILURE TO REALIZE SAVINGS OR OTHER BENEFITS, EXPENDITURES FOR SUBSTITUTE EQUIPMENT OR SERVICES, LOSS OR CORRUPTION OF DATA, INCLUDING, WITHOUT LIMITATION, DATA STORED ON THE PRODUCT'S HARD DISK DRIVE, STORAGE CHARGES OR OTHER SPECIAL, INCIDENTAL OR CONSEQUENTIAL DAMAGES CAUSED BY THE USE, MISUSE OR INABILITY TO USE THE PRODUCT, REGARDLESS OF THE LEGAL THEORY ON WHICH THE CLAIM IS BASED AND EVEN IF CANON OR ITS SUPPLIERS OR ANY AUTHORIZED SERVICE PROVIDER HAS BEEN ADVISED OF THE POSSIBILITY OF SUCH DAMAGES. NOR SHALL RECOVERY OF ANY KIND AGAINST CANON OR ITS SUPPLIERS OR ANY AUTHORIZED SERVICE PROVIDER BE GREATER IN AMOUNT THAN THE PURCHASE PRICE OF THE PRODUCT CAUSING THE ALLEGED DAMAGE. WITHOUT LIMITING THE FOREGOING, THE PURCHASER ASSUMES ALL RISKS AND LIABILITY FOR LOSS, DAMAGE OR INJURY TO PERSONS AND PROPERTY OF THE PURCHASER OR OTHERS ARISING OUT OF THE POSSESSION, USE, MISUSE, OR INABILITY TO USE THE PRODUCT NOT CAUSED SOLELY AND DIRECTLY BY THE NEGLIGENCE OF CANON OR ANY AUTHORIZED SERVICE PROVIDER. THIS WARRANTY SHALL NOT EXTEND TO ANYONE OTHER THAN THE ORIGINAL PURCHASER OF THE PRODUCT AND STATES SUCH PURCHASER'S EXCLUSIVE REMEDY.

### **CONDITIONS OF WARRANTY**

Defective parts must be returned to Canon or an Authorized Service Provider with all necessary documentation and will become the property of Canon.

THIS WARRANTY APPLIES TO PRODUCTS SOLD AND USED IN THE U.S.A. AND CANADA ONLY.

# Memo

# Memo

# Canon

---

**CANON INC.**

30-2, Shimomaruko 3-chome, Ohta-ku, Tokyo 146-8501, Japan

**CANON U.S.A., INC.**

One Canon Park, Melville, NY 11747, U.S.A.

**CANON CANADA INC.**

6390 Dixie Road Mississauga, Ontario L5T 1P7, Canada

**CANON EUROPA N.V.**

Bovenkerkerweg 59, 1185 XB Amstelveen, The Netherlands

(See <http://www.canon-europe.com/> for details on your regional dealer)

**CANON AUSTRALIA PTY LTD**

Building A, The Park Estate, 5 Talavera Road, Macquarie Park, NSW 2113, Australia

**CANON CHINA CO. LTD.**

15F Jinbao Building No.89, Jinbao Street, Dongcheng District, Beijing 100005, PRC

**CANON SINGAPORE PTE LTD**

1 HarbourFront Avenue, #04-01 Keppel Bay Tower, Singapore 098632

**CANON HONGKONG CO., LTD.**

19/F, The Metropolis Tower, 10 Metropolis Drive, Hunghom, Kowloon, Hong Kong





## Free Manuals Download Website

<http://myh66.com>

<http://usermanuals.us>

<http://www.somanuals.com>

<http://www.4manuals.cc>

<http://www.manual-lib.com>

<http://www.404manual.com>

<http://www.luxmanual.com>

<http://aubethermostatmanual.com>

Golf course search by state

<http://golfingnear.com>

Email search by domain

<http://emailbydomain.com>

Auto manuals search

<http://auto.somanuals.com>

TV manuals search

<http://tv.somanuals.com>