

PIXMA

iP2580/iP1880

Quick Start Guide

Table of Contents

How to Use the Documentation Provided	2
Reading the On-screen Manuals	3
Preparing the Printer	4
Installing the Printer Driver	5
Introduction	6
Printing from Your Computer	7



Exif Print

This printer supports ExifPrint.

Exif Print is a standard for enhancing the communication between digital cameras and printers.

International ENERGY STAR® Program

As an ENERGY STAR® Partner, Canon Inc. has determined that this product meets the ENERGY STAR® guidelines for energy efficiency.



The International ENERGY STAR® Office Equipment Program is an international program that promotes energy saving through the penetration of energy efficient computers and other office equipment. The program backs the development and dissemination of products with functions that effectively reduce energy consumption. It is an open system in which business proprietors can participate voluntarily. The targeted products are office equipment such as computers, monitors, printers, facsimiles, copiers, scanners, and multifunction devices. Their standards and logos are uniform among participating nations.

About Consumables

Consumables (ink tanks / FINE Cartridges) are available for 5 years after production has stopped.

Safety Precautions

Warning

- Never attempt to plug the power cord into the power outlet or unplug the power cord when your hands are wet.
- Never damage, modify, stretch, or excessively bend or twist the power cord. Do not place heavy objects on the power cord.
- Never use any power supply other than the standard power supply available in the country of purchase. Using the incorrect voltage and frequency could cause a fire or electric shock.
- Always push the plug all the way into the power outlet.

Caution

- For safety reasons, store FINE Cartridges out of the reach of small children.
 - Do not drop or shake FINE Cartridges as this may cause the ink to leak out and stain your clothes and hands.
-

Also read the Safety Precautions in the *User's Guide* on-screen manual. Observe the warnings and cautions to avoid personal injury or damage to the printer.

How to Use the Documentation Provided



Easy Setup Instructions (Printed documentation)

Be sure to read this sheet first.

This sheet includes instructions for setting up your printer and getting it ready for use.

Quick Start Guide (This guide)

Read this guide when starting to use the printer.

After following instructions in the *Easy Setup Instructions*, we recommend you read this guide to familiarize yourself with the basic operation of some of the main functions that can be performed on your printer.



On-screen Manuals

User's Guide

Read this guide when starting to use the printer.

If the *Quick Start Guide* does not provide you enough information please refer to the *User's Guide* which can be installed from the *Setup CD-ROM*. This guide provides detailed instructions for printing from your computer.

Additional guides are also available for advanced features.

Printer Driver Guide

Refer to this guide for full instructions on printer driver setting.

Photo Application Guide

Refer to this guide for instructions on using the various application software included on the *Setup CD-ROM*.

Reading the On-screen Manuals

Along with this *Quick Start Guide*, on-screen manuals are also supplied with your printer. For detailed instructions on installing the on-screen manuals, refer to your setup sheet.

You can view the on-screen manuals in the following way:

Windows

To view the on-screen manual, double-click the **iPXXXX On-screen Manual** shortcut icon on the desktop, or click **Start > All Programs (or Programs) > Canon iPXXXX Manual > iPXXXX On-screen Manual**.

* "XXXX" represents 2500 series or 1800 series.

System Requirements

Browser: Windows HTML Help Viewer



Note

- Microsoft® Internet Explorer 5.0 or later must be installed.
 - The on-screen manual may not be displayed properly depending on your operating system or Internet Explorer version. We recommend that you keep your system up to date with Windows Update.
-

Macintosh

To view the on-screen manual, double-click the **iPXXXX On-screen Manual** alias on the desktop.

* "XXXX" represents 2500 series or 1800 series.



Note

If you installed the *User's Guide* from the **Manual** folder in the *Setup CD-ROM*, open the folder in which you copied the *User's Guide* and double-click **top.htm**.

System Requirements

Browser: Help Viewer



Note

- The on-screen manual may not be displayed properly depending on your operating system. We recommend that you keep your system up to date.
 - We recommend using Safari as your Web browser to view the HTML format on-screen manuals. If Safari is not installed on your computer, download it from Apple Computer, Inc. website and install it.
-

Preparing the Printer

Be sure to read your setup sheet first for setting up your printer and getting it ready for use.

The diagrams and computer screens in your setup sheet refer to the iP2500 series. The operations are exactly the same with the iP1800 series, unless otherwise described.

Unpack the printer

Please confirm the included items against the illustration printed on the lid of the packing box.

Important

- In Windows, do not connect the USB cable until after the software is installed.
 - A USB cable is necessary to connect the printer with your computer.
-

1 Turn on the printer.

Caution

Be sure to remove the tapes and protective material before you turn on the printer.

Note

The tape or the protective material position is subject to change.

2 Prepare the FINE Cartridges.

Caution

Do not touch internal parts other than the FINE Cartridge Holder.

Note

- Do not touch the electrical contacts or Print Head Nozzles on a FINE Cartridge. The printer may not print out properly if you touch it.
 - Do not reattach the protective tape once it has been removed it.
 - Handle the removed protective tape carefully to avoid getting your hands dirty or staining surrounding work area.
-

3 Install the FINE Cartridges.

Be sure to use the printer with both Black and Color FINE Cartridges.

Otherwise, the printer cannot print. When either of ink runs out while printing, you can select to use either Color or Black ink as a printer driver setting. However you must use the printer with both Black and Color FINE Cartridges installed regardless of the printer driver setting.

Important

- Make sure that all the FINE Cartridges are installed in the correct position. The printer cannot be used unless all the FINE Cartridges are installed.
- Once you have installed the FINE Cartridges, the **POWER** lamp will flash green. Wait for about one to two minutes, until the **POWER** lamp stops flashing and remains lit green and the printer has stopped making operating noises, before proceeding.

Note

- Do not drop or shake FINE Cartridges as this may cause the ink to leak out and stain your clothes and hands.
 - The **ALARM** lamp on the printer still flashes orange if a FINE Cartridge is not installed properly. Open the Front Cover and make sure that the position of all the FINE Cartridges is appropriate.
-

Installing the Printer Driver

■ Information Common to Windows® and Macintosh®

Notes on the Installation Process

- If the **Select Language** screen appears, select a language, then click **Next**.
- If the **Select Your Place of Residence** screen appears, select your place of residence, then click **Next**.
- There are two ways of installing the printer driver and other software:
 - Easy Install:** the items included on the *Setup CD-ROM* are installed automatically
 - Custom Install:** you can select particular items to install
- When the **User Registration** screen appears, click **Register**. If your computer is connected to the Internet, the on-screen instructions to register your product will appear.

Notes on the Print Head Alignment

If the straight line is misaligned or print quality is not satisfactory after installing the printer driver, you may need to align the Print Head. Refer to "Aligning the Print Head" in the *User's Guide* on-screen manual.

■ Information for Windows

Note

- When installing the printer driver in Windows XP or Windows 2000, log on to the system as a member of the **Administrators** group.
- Before installing the driver, disable all anti-virus programs and automatically loading programs.
- If the following screen appears automatically, remove the USB cable connected to your computer. Next, click **Cancel** to quit the screen and turn off the printer. Then start the installation process again. For details on the installation process, refer to your setup sheet.
- To install Adobe® RGB (1998), click **Custom Install** and follow the instruction on the screen.
- When a message asking for your confirmation to restart your computer appears during the installation process, click **OK**. The system is restarted automatically.
- We would appreciate it if you would take part in the **PIXMA Extended Survey Program** regarding the use of Canon printers. For details, refer to the on-screen instructions.
- If the connection is not recognized, refer to "Cannot Install the Printer Driver" in the *User's Guide* on-screen manual.



■ Information for Macintosh

Note

- Do not remove or insert the USB cable during installation, as this may result in the computer or printer not operating normally.
- Before installing the driver, disable all anti-virus programs and automatically loading programs or remove them from your system folder.
- To install the *User's Guide* on-screen manual in a language other than the installed one, double-click the **Manual** folder in *Setup CD-ROM*, **Canon** folder, and then copy a language folder to your hard disk.

Introduction

Thank you for purchasing a Canon Inkjet Printer.

This *Quick Start Guide* uses the following symbols to indicate important information. Always observe the instructions indicated by these symbols.

Warning

Instructions that, if ignored, could result in death or serious personal injury caused by incorrect operation of the equipment. These must be observed for safe operation.

Caution

Instructions that, if ignored, could result in personal injury or material damage caused by incorrect operation of the equipment. These must be observed for safe operation.

Important

Instructions that must be observed for safe operation.

The diagrams and computer screens in this guide refer to the iP2500 series. The operations are exactly the same with the iP1800 series, unless otherwise described.

Trademark Notices

- Microsoft and Windows are either registered trademarks or trademarks of Microsoft Corporation in the U.S. and/or other countries.
- Macintosh and Mac are trademarks of Apple Computer, Inc., registered in the U.S. and other countries.
- Adobe and Adobe RGB (1998) are either registered trademarks or trademarks of Adobe Systems Incorporated in the United States and/or other countries.
- Specifications are subject to change without notice.

© **CANON INC. 2007**

All rights reserved. No part of this publication may be transmitted or copied in any form whatsoever without the express written permission.

Printing from Your Computer

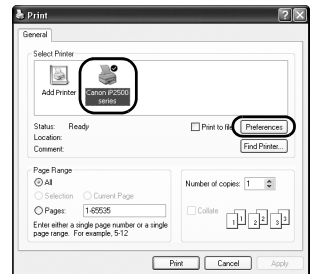
This section describes the procedure for basic printing.

Note

For information on how to load paper, refer to "Loading Printing Paper" in the *User's Guide* on-screen manual.

Printing with Windows

- 1 Turn on the printer and load the paper in the printer.
- 2 Create a document or open a file to print using an appropriate application software.
- 3 Select **Print** on the application software's **File** menu.
- 4 Make sure that **Canon iPXXXX** ("XXXX" represents 2500 series or 1800 series) is selected in **Select Printer**, and click **Preferences** (or **Properties**).

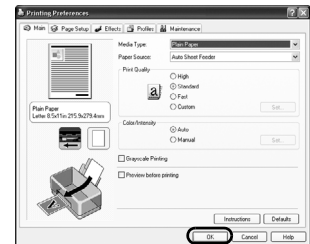


- 5 Specify the required settings and click **OK**.

Note

For details on the printer driver functions, click **Help** or **Instructions** to view the online help or the *Printer Driver Guide* on-screen manual. **Instructions** is only displayed when the on-screen manuals are installed.


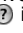
- 6 Click **Print** (or **OK**).



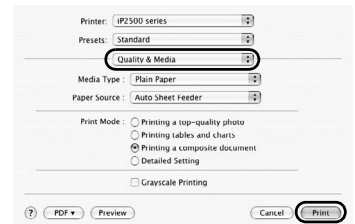
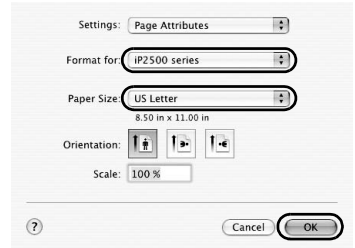
Printing with Macintosh

- 1 Turn on the printer and load the paper in the printer.
- 2 Create a document or open a file to print using an appropriate application software.
- 3 Select **Page Setup** on the application software's **File** menu.
- 4 Confirm that **iPXXXX** ("XXXX" represents 2500 series or 1800 series) is selected in **Format for**.
- 5 Select the desired paper size in **Paper Size**.
- 6 Click **OK**.
- 7 Select **Print** on the application software's **File** menu.
- 8 Select **Quality & Media** in the pop-up menu.
- 9 Specify the required settings.

Note

For details on the printer driver functions, click  to view the *Printer Driver Guide* on-screen manual. If the on-screen manuals are not installed, the *Printer Driver Guide* on-screen manual is not displayed even if  is clicked.

- 10 Click **Print**.



The following FINE Cartridges are compatible with this product.



PG-830



CL-831



PG-40



CL-41

www.canon-asia.com

Free Manuals Download Website

<http://myh66.com>

<http://usermanuals.us>

<http://www.somanuals.com>

<http://www.4manuals.cc>

<http://www.manual-lib.com>

<http://www.404manual.com>

<http://www.luxmanual.com>

<http://aubethermostatmanual.com>

Golf course search by state

<http://golfingnear.com>

Email search by domain

<http://emailbydomain.com>

Auto manuals search

<http://auto.somanuals.com>

TV manuals search

<http://tv.somanuals.com>