



Online Manual

My Image Garden Guide

Contents

Symbols Used in This Document.	4
Touch-enabled Device Users (Windows).	5
Trademarks and Licenses.	6
My Image Garden Guide.	17
What Is My Image Garden?.	18
My Image Garden Features.	19
To Utilize Images Imported to the Computer.	23
Selecting Images, PDF Files, and Videos.	25
Starting My Image Garden.	32
Printing.	33
Printing Photos and Documents.	34
Printing Disc Labels (CD/DVD/BD).	37
Creating and Printing Items.	42
Printing Photos in a Variety of Layouts.	45
Using Various Functions.	49
Scanning Photos and Documents.	50
Easy Scanning with Auto Scan.	51
Scanning Photos.	54
Scanning Documents.	57
Correcting/Enhancing Photos.	60
Cropping Photos.	63
Creating/Editing PDF Files.	65
Extracting Text from Images (OCR Function).	67
Troubleshooting.	69
Target Printer Does Not Appear.	70
When Having Trouble Using Functions or When Changing Settings.	71
My Image Garden Guide(AirPrint).	73
What Is My Image Garden?.	74
My Image Garden Features.	75
Printing.	79

Printing Photos and Documents.	80
Printing Disc Labels (CD/DVD/BD).	83
Creating and Printing Items.	87
Printing Photos in a Variety of Layouts.	90
Using Various Functions.	94
Scanning Photos and Documents.	95
Scanning Photos.	96
Scanning Documents.	99

Symbols Used in This Document

Warning

Instructions that, if ignored, could result in death or serious personal injury caused by incorrect operation of the equipment. These must be observed for safe operation.

Caution

Instructions that, if ignored, could result in personal injury or material damage caused by incorrect operation of the equipment. These must be observed for safe operation.

Important

Instructions including important information. To avoid damage and injury or improper use of the product, be sure to read these indications.

Note

Instructions including notes for operation and additional explanations.

Basics

Instructions explaining basic operations of your product.

Note

- Icons may vary depending on your product.

Touch-enabled Device Users (Windows)

For touch actions, you need to replace "right-click" in this document with the action set on the operating system. For example, if the action is set to "press and hold" on your operating system, replace "right-click" with "press and hold."

Trademarks and Licenses

- Microsoft is a registered trademark of Microsoft Corporation.
- Windows is a trademark or registered trademark of Microsoft Corporation in the U.S. and/or other countries.
- Windows Vista is a trademark or registered trademark of Microsoft Corporation in the U.S. and/or other countries.
- Internet Explorer is a trademark or registered trademark of Microsoft Corporation in the U.S. and/or other countries.
- Mac, Mac OS, AirPort, App Store, AirPrint, the AirPrint logo, Safari, Bonjour, iPad, iPhone and iPod touch are trademarks of Apple Inc., registered in the U.S. and other countries. macOS is a trademarks of Apple Inc.
- IOS is a trademark or registered trademark of Cisco in the U.S. and other countries and is used under license.
- Google Cloud Print, Google Chrome, Chrome OS, Chromebook, Android, Google Play, Google Drive, Google Apps and Google Analytics are either registered trademarks or trademarks of Google Inc.
- Adobe, Flash, Photoshop, Photoshop Elements, Lightroom, Adobe RGB and Adobe RGB (1998) are either registered trademarks or trademarks of Adobe Systems Incorporated in the United States and/or other countries.
- Bluetooth is a trademark of Bluetooth SIG, Inc., U.S.A. and licensed to Canon Inc.
- Autodesk and AutoCAD are registered trademarks or trademarks of Autodesk, Inc., and/or its subsidiaries and/or affiliates in the USA and/or other countries.

»» Note

- The formal name of Windows Vista is Microsoft Windows Vista operating system.

Copyright (c) 2003-2015 Apple Inc. All rights reserved.

Redistribution and use in source and binary forms, with or without modification, are permitted provided that the following conditions are met:

1. Redistributions of source code must retain the above copyright notice, this list of conditions and the following disclaimer.
2. Redistributions in binary form must reproduce the above copyright notice, this list of conditions and the following disclaimer in the documentation and/or other materials provided with the distribution.
3. Neither the name of Apple Inc. ("Apple") nor the names of its contributors may be used to endorse or promote products derived from this software without specific prior written permission.

THIS SOFTWARE IS PROVIDED BY APPLE AND ITS CONTRIBUTORS "AS IS" AND ANY EXPRESS OR IMPLIED WARRANTIES, INCLUDING, BUT NOT LIMITED TO, THE IMPLIED WARRANTIES OF MERCHANTABILITY AND FITNESS FOR A PARTICULAR PURPOSE ARE DISCLAIMED. IN NO EVENT SHALL APPLE OR ITS CONTRIBUTORS BE LIABLE FOR ANY DIRECT, INDIRECT, INCIDENTAL, SPECIAL, EXEMPLARY, OR CONSEQUENTIAL DAMAGES (INCLUDING, BUT NOT LIMITED TO, PROCUREMENT OF SUBSTITUTE GOODS OR SERVICES; LOSS OF USE, DATA, OR PROFITS; OR BUSINESS INTERRUPTION) HOWEVER CAUSED AND ON ANY THEORY OF LIABILITY, WHETHER IN CONTRACT, STRICT LIABILITY, OR TORT (INCLUDING NEGLIGENCE OR OTHERWISE) ARISING IN ANY WAY OUT OF THE USE OF THIS SOFTWARE, EVEN IF ADVISED OF THE POSSIBILITY OF SUCH DAMAGE.

Apache License

Version 2.0, January 2004

<http://www.apache.org/licenses/>

TERMS AND CONDITIONS FOR USE, REPRODUCTION, AND DISTRIBUTION

1. Definitions.

"License" shall mean the terms and conditions for use, reproduction, and distribution as defined by Sections 1 through 9 of this document.

"Licensor" shall mean the copyright owner or entity authorized by the copyright owner that is granting the License.

"Legal Entity" shall mean the union of the acting entity and all other entities that control, are controlled by, or are under common control with that entity. For the purposes of this definition, "control" means (i) the power, direct or indirect, to cause the direction or management of such entity, whether by contract or otherwise, or (ii) ownership of fifty percent (50%) or more of the outstanding shares, or (iii) beneficial ownership of such entity.

"You" (or "Your") shall mean an individual or Legal Entity exercising permissions granted by this License.

"Source" form shall mean the preferred form for making modifications, including but not limited to software source code, documentation source, and configuration files.

"Object" form shall mean any form resulting from mechanical transformation or translation of a Source form, including but not limited to compiled object code, generated documentation, and conversions to other media types.

"Work" shall mean the work of authorship, whether in Source or Object form, made available under the License, as indicated by a copyright notice that is included in or attached to the work (an example is provided in the Appendix below).

"Derivative Works" shall mean any work, whether in Source or Object form, that is based on (or derived from) the Work and for which the editorial revisions, annotations, elaborations, or other modifications represent, as a whole, an original work of authorship. For the purposes of this License, Derivative Works shall not include works that remain separable from, or merely link (or bind by name) to the interfaces of, the Work and Derivative Works thereof.

"Contribution" shall mean any work of authorship, including the original version of the Work and any modifications or additions to that Work or Derivative Works thereof, that is intentionally submitted to Licensor for inclusion in the Work by the copyright owner or by an individual or Legal Entity authorized to submit on behalf of the copyright owner. For the purposes of this definition, "submitted" means any form of electronic, verbal, or written communication sent to the Licensor or its representatives, including but not limited to communication on electronic mailing lists, source code control systems, and issue tracking systems that are managed by, or on behalf of, the Licensor for the purpose of discussing and improving the Work, but excluding communication that is conspicuously marked or otherwise designated in writing by the copyright owner as "Not a Contribution."

"Contributor" shall mean Licensor and any individual or Legal Entity on behalf of whom a Contribution has been received by Licensor and subsequently incorporated within the Work.

2. Grant of Copyright License. Subject to the terms and conditions of this License, each Contributor hereby grants to You a perpetual, worldwide, non-exclusive, no-charge, royalty-free, irrevocable copyright license to reproduce, prepare Derivative Works of, publicly display, publicly perform, sublicense, and distribute the Work and such Derivative Works in Source or Object form.
3. Grant of Patent License. Subject to the terms and conditions of this License, each Contributor hereby grants to You a perpetual, worldwide, non-exclusive, no-charge, royalty-free, irrevocable (except as stated in this section) patent license to make, have made, use, offer to sell, sell, import, and otherwise transfer the Work, where such license applies only to those patent claims licensable by such Contributor that are necessarily infringed by their Contribution(s) alone or by combination of their Contribution(s) with the Work to which such Contribution(s) was submitted. If You institute patent litigation against any entity (including a cross-claim or counterclaim in a lawsuit) alleging that the Work or a Contribution incorporated within the Work constitutes direct or contributory patent infringement, then any patent licenses granted to You under this License for that Work shall terminate as of the date such litigation is filed.
4. Redistribution. You may reproduce and distribute copies of the Work or Derivative Works thereof in any medium, with or without modifications, and in Source or Object form, provided that You meet the following conditions:
 1. You must give any other recipients of the Work or Derivative Works a copy of this License; and
 2. You must cause any modified files to carry prominent notices stating that You changed the files; and
 3. You must retain, in the Source form of any Derivative Works that You distribute, all copyright, patent, trademark, and attribution notices from the Source form of the Work, excluding those notices that do not pertain to any part of the Derivative Works; and
 4. If the Work includes a "NOTICE" text file as part of its distribution, then any Derivative Works that You distribute must include a readable copy of the attribution notices contained within such NOTICE file, excluding those notices that do not pertain to any part of the Derivative Works, in at least one of the following places: within a NOTICE text file distributed as part of the Derivative Works; within the Source form or documentation, if provided along with the Derivative Works; or, within a display generated by the Derivative Works, if and wherever such third-party notices normally appear. The contents of the NOTICE file are for informational purposes only and do not modify the License. You may add Your own attribution notices within Derivative Works that You distribute, alongside or as an addendum to the NOTICE text from the Work, provided that such additional attribution notices cannot be construed as modifying the License.

You may add Your own copyright statement to Your modifications and may provide additional or different license terms and conditions for use, reproduction, or distribution of Your modifications, or for any such Derivative Works as a whole, provided Your use, reproduction, and distribution of the Work otherwise complies with the conditions stated in this License.
5. Submission of Contributions. Unless You explicitly state otherwise, any Contribution intentionally submitted for inclusion in the Work by You to the Licensor shall be under the terms and conditions of this License, without any additional terms or conditions. Notwithstanding the above, nothing herein shall supersede or modify the terms of any separate license agreement you may have executed with Licensor regarding such Contributions.
6. Trademarks. This License does not grant permission to use the trade names, trademarks, service marks, or product names of the Licensor, except as required for reasonable and customary use in describing the origin of the Work and reproducing the content of the NOTICE file.

7. Disclaimer of Warranty. Unless required by applicable law or agreed to in writing, Licensor provides the Work (and each Contributor provides its Contributions) on an "AS IS" BASIS, WITHOUT WARRANTIES OR CONDITIONS OF ANY KIND, either express or implied, including, without limitation, any warranties or conditions of TITLE, NON-INFRINGEMENT, MERCHANTABILITY, or FITNESS FOR A PARTICULAR PURPOSE. You are solely responsible for determining the appropriateness of using or redistributing the Work and assume any risks associated with Your exercise of permissions under this License.
8. Limitation of Liability. In no event and under no legal theory, whether in tort (including negligence), contract, or otherwise, unless required by applicable law (such as deliberate and grossly negligent acts) or agreed to in writing, shall any Contributor be liable to You for damages, including any direct, indirect, special, incidental, or consequential damages of any character arising as a result of this License or out of the use or inability to use the Work (including but not limited to damages for loss of goodwill, work stoppage, computer failure or malfunction, or any and all other commercial damages or losses), even if such Contributor has been advised of the possibility of such damages.
9. Accepting Warranty or Additional Liability. While redistributing the Work or Derivative Works thereof, You may choose to offer, and charge a fee for, acceptance of support, warranty, indemnity, or other liability obligations and/or rights consistent with this License. However, in accepting such obligations, You may act only on Your own behalf and on Your sole responsibility, not on behalf of any other Contributor, and only if You agree to indemnify, defend, and hold each Contributor harmless for any liability incurred by, or claims asserted against, such Contributor by reason of your accepting any such warranty or additional liability.

END OF TERMS AND CONDITIONS

---- Part 1: CMU/UCD copyright notice: (BSD like) ----

Copyright 1989, 1991, 1992 by Carnegie Mellon University

Derivative Work - 1996, 1998-2000

Copyright 1996, 1998-2000 The Regents of the University of California

All Rights Reserved

Permission to use, copy, modify and distribute this software and its documentation for any purpose and without fee is hereby granted, provided that the above copyright notice appears in all copies and that both that copyright notice and this permission notice appear in supporting documentation, and that the name of CMU and The Regents of the University of California not be used in advertising or publicity pertaining to distribution of the software without specific written permission.

CMU AND THE REGENTS OF THE UNIVERSITY OF CALIFORNIA DISCLAIM ALL WARRANTIES WITH REGARD TO THIS SOFTWARE, INCLUDING ALL IMPLIED WARRANTIES OF MERCHANTABILITY AND FITNESS. IN NO EVENT SHALL CMU OR THE REGENTS OF THE UNIVERSITY OF CALIFORNIA BE LIABLE FOR ANY SPECIAL, INDIRECT OR CONSEQUENTIAL DAMAGES OR ANY DAMAGES WHATSOEVER RESULTING FROM THE LOSS OF USE, DATA OR PROFITS, WHETHER IN AN ACTION OF CONTRACT, NEGLIGENCE OR OTHER TORTIOUS ACTION, ARISING OUT OF OR IN CONNECTION WITH THE USE OR PERFORMANCE OF THIS SOFTWARE.

---- Part 2: Networks Associates Technology, Inc copyright notice (BSD) ----

Copyright (c) 2001-2003, Networks Associates Technology, Inc

All rights reserved.

Redistribution and use in source and binary forms, with or without modification, are permitted provided that the following conditions are met:

- * Redistributions of source code must retain the above copyright notice, this list of conditions and the following disclaimer.
- * Redistributions in binary form must reproduce the above copyright notice, this list of conditions and the following disclaimer in the documentation and/or other materials provided with the distribution.
- * Neither the name of the Networks Associates Technology, Inc nor the names of its contributors may be used to endorse or promote products derived from this software without specific prior written permission.

THIS SOFTWARE IS PROVIDED BY THE COPYRIGHT HOLDERS AND CONTRIBUTORS ``AS IS'' AND ANY EXPRESS OR IMPLIED WARRANTIES, INCLUDING, BUT NOT LIMITED TO, THE IMPLIED WARRANTIES OF MERCHANTABILITY AND FITNESS FOR A PARTICULAR PURPOSE ARE DISCLAIMED. IN NO EVENT SHALL THE COPYRIGHT HOLDERS OR CONTRIBUTORS BE LIABLE FOR ANY DIRECT, INDIRECT, INCIDENTAL, SPECIAL, EXEMPLARY, OR CONSEQUENTIAL DAMAGES (INCLUDING, BUT NOT LIMITED TO, PROCUREMENT OF SUBSTITUTE GOODS OR SERVICES; LOSS OF USE, DATA, OR PROFITS; OR BUSINESS INTERRUPTION) HOWEVER CAUSED AND ON ANY THEORY OF LIABILITY, WHETHER IN CONTRACT, STRICT LIABILITY, OR TORT (INCLUDING NEGLIGENCE OR OTHERWISE) ARISING IN ANY WAY OUT OF THE USE OF THIS SOFTWARE, EVEN IF ADVISED OF THE POSSIBILITY OF SUCH DAMAGE.

---- Part 3: Cambridge Broadband Ltd. copyright notice (BSD) ----

Portions of this code are copyright (c) 2001-2003, Cambridge Broadband Ltd.

All rights reserved.

Redistribution and use in source and binary forms, with or without modification, are permitted provided that the following conditions are met:

- * Redistributions of source code must retain the above copyright notice, this list of conditions and the following disclaimer.
- * Redistributions in binary form must reproduce the above copyright notice, this list of conditions and the following disclaimer in the documentation and/or other materials provided with the distribution.
- * The name of Cambridge Broadband Ltd. may not be used to endorse or promote products derived from this software without specific prior written permission.

THIS SOFTWARE IS PROVIDED BY THE COPYRIGHT HOLDER ``AS IS'' AND ANY EXPRESS OR IMPLIED WARRANTIES, INCLUDING, BUT NOT LIMITED TO, THE IMPLIED WARRANTIES OF MERCHANTABILITY AND FITNESS FOR A PARTICULAR PURPOSE ARE DISCLAIMED. IN NO EVENT SHALL THE COPYRIGHT HOLDER BE LIABLE FOR ANY DIRECT, INDIRECT, INCIDENTAL, SPECIAL, EXEMPLARY, OR CONSEQUENTIAL DAMAGES (INCLUDING, BUT NOT LIMITED TO, PROCUREMENT OF SUBSTITUTE GOODS OR SERVICES; LOSS OF USE, DATA, OR PROFITS; OR BUSINESS INTERRUPTION) HOWEVER CAUSED AND ON ANY THEORY OF LIABILITY, WHETHER IN CONTRACT, STRICT LIABILITY, OR TORT (INCLUDING NEGLIGENCE OR OTHERWISE) ARISING IN ANY WAY OUT OF THE USE OF THIS SOFTWARE, EVEN IF ADVISED OF THE POSSIBILITY OF SUCH DAMAGE.

---- Part 4: Sun Microsystems, Inc. copyright notice (BSD) ----

Copyright c 2003 Sun Microsystems, Inc., 4150 Network Circle, Santa Clara, California 95054, U.S.A. All rights reserved.

Use is subject to license terms below.

This distribution may include materials developed by third parties.

Sun, Sun Microsystems, the Sun logo and Solaris are trademarks or registered trademarks of Sun Microsystems, Inc. in the U.S. and other countries.

Redistribution and use in source and binary forms, with or without modification, are permitted provided that the following conditions are met:

- * Redistributions of source code must retain the above copyright notice, this list of conditions and the following disclaimer.
- * Redistributions in binary form must reproduce the above copyright notice, this list of conditions and the following disclaimer in the documentation and/or other materials provided with the distribution.
- * Neither the name of the Sun Microsystems, Inc. nor the names of its contributors may be used to endorse or promote products derived from this software without specific prior written permission.

THIS SOFTWARE IS PROVIDED BY THE COPYRIGHT HOLDERS AND CONTRIBUTORS "AS IS" AND ANY EXPRESS OR IMPLIED WARRANTIES, INCLUDING, BUT NOT LIMITED TO, THE IMPLIED WARRANTIES OF MERCHANTABILITY AND FITNESS FOR A PARTICULAR PURPOSE ARE DISCLAIMED. IN NO EVENT SHALL THE COPYRIGHT HOLDERS OR CONTRIBUTORS BE LIABLE FOR ANY DIRECT, INDIRECT, INCIDENTAL, SPECIAL, EXEMPLARY, OR CONSEQUENTIAL DAMAGES (INCLUDING, BUT NOT LIMITED TO, PROCUREMENT OF SUBSTITUTE GOODS OR SERVICES; LOSS OF USE, DATA, OR PROFITS; OR BUSINESS INTERRUPTION) HOWEVER CAUSED AND ON ANY THEORY OF LIABILITY, WHETHER IN CONTRACT, STRICT LIABILITY, OR TORT (INCLUDING NEGLIGENCE OR OTHERWISE) ARISING IN ANY WAY OUT OF THE USE OF THIS SOFTWARE, EVEN IF ADVISED OF THE POSSIBILITY OF SUCH DAMAGE.

---- Part 5: Sparta, Inc copyright notice (BSD) ----

Copyright (c) 2003-2012, Sparta, Inc

All rights reserved.

Redistribution and use in source and binary forms, with or without modification, are permitted provided that the following conditions are met:

- * Redistributions of source code must retain the above copyright notice, this list of conditions and the following disclaimer.
- * Redistributions in binary form must reproduce the above copyright notice, this list of conditions and the following disclaimer in the documentation and/or other materials provided with the distribution.
- * Neither the name of Sparta, Inc nor the names of its contributors may be used to endorse or promote products derived from this software without specific prior written permission.

THIS SOFTWARE IS PROVIDED BY THE COPYRIGHT HOLDERS AND CONTRIBUTORS "AS IS" AND ANY EXPRESS OR IMPLIED WARRANTIES, INCLUDING, BUT NOT LIMITED TO, THE IMPLIED WARRANTIES OF MERCHANTABILITY AND FITNESS FOR A PARTICULAR PURPOSE ARE DISCLAIMED. IN NO EVENT SHALL THE COPYRIGHT HOLDERS OR CONTRIBUTORS BE LIABLE FOR ANY DIRECT, INDIRECT, INCIDENTAL, SPECIAL, EXEMPLARY, OR CONSEQUENTIAL DAMAGES (INCLUDING, BUT NOT LIMITED TO, PROCUREMENT OF SUBSTITUTE GOODS OR SERVICES; LOSS OF USE, DATA, OR PROFITS; OR BUSINESS INTERRUPTION) HOWEVER CAUSED AND ON ANY THEORY OF LIABILITY, WHETHER IN CONTRACT, STRICT LIABILITY, OR

TORT (INCLUDING NEGLIGENCE OR OTHERWISE) ARISING IN ANY WAY OUT OF THE USE OF THIS SOFTWARE, EVEN IF ADVISED OF THE POSSIBILITY OF SUCH DAMAGE.

---- Part 6: Cisco/BUPTNIC copyright notice (BSD) ----

Copyright (c) 2004, Cisco, Inc and Information Network Center of Beijing University of Posts and Telecommunications.

All rights reserved.

Redistribution and use in source and binary forms, with or without modification, are permitted provided that the following conditions are met:

- * Redistributions of source code must retain the above copyright notice, this list of conditions and the following disclaimer.
- * Redistributions in binary form must reproduce the above copyright notice, this list of conditions and the following disclaimer in the documentation and/or other materials provided with the distribution.
- * Neither the name of Cisco, Inc, Beijing University of Posts and Telecommunications, nor the names of their contributors may be used to endorse or promote products derived from this software without specific prior written permission.

THIS SOFTWARE IS PROVIDED BY THE COPYRIGHT HOLDERS AND CONTRIBUTORS "AS IS" AND ANY EXPRESS OR IMPLIED WARRANTIES, INCLUDING, BUT NOT LIMITED TO, THE IMPLIED WARRANTIES OF MERCHANTABILITY AND FITNESS FOR A PARTICULAR PURPOSE ARE DISCLAIMED. IN NO EVENT SHALL THE COPYRIGHT HOLDERS OR CONTRIBUTORS BE LIABLE FOR ANY DIRECT, INDIRECT, INCIDENTAL, SPECIAL, EXEMPLARY, OR CONSEQUENTIAL DAMAGES (INCLUDING, BUT NOT LIMITED TO, PROCUREMENT OF SUBSTITUTE GOODS OR SERVICES; LOSS OF USE, DATA, OR PROFITS; OR BUSINESS INTERRUPTION) HOWEVER CAUSED AND ON ANY THEORY OF LIABILITY, WHETHER IN CONTRACT, STRICT LIABILITY, OR TORT (INCLUDING NEGLIGENCE OR OTHERWISE) ARISING IN ANY WAY OUT OF THE USE OF THIS SOFTWARE, EVEN IF ADVISED OF THE POSSIBILITY OF SUCH DAMAGE.

---- Part 7: Fabasoft R&D Software GmbH & Co KG copyright notice (BSD) ----

Copyright (c) Fabasoft R&D Software GmbH & Co KG, 2003 oss@fabasoft.com

Author: Bernhard Penz <bernhard.penz@fabasoft.com>

Redistribution and use in source and binary forms, with or without modification, are permitted provided that the following conditions are met:

- * Redistributions of source code must retain the above copyright notice, this list of conditions and the following disclaimer.
- * Redistributions in binary form must reproduce the above copyright notice, this list of conditions and the following disclaimer in the documentation and/or other materials provided with the distribution.
- * The name of Fabasoft R&D Software GmbH & Co KG or any of its subsidiaries, brand or product names may not be used to endorse or promote products derived from this software without specific prior written permission.

THIS SOFTWARE IS PROVIDED BY THE COPYRIGHT HOLDER "AS IS" AND ANY EXPRESS OR IMPLIED WARRANTIES, INCLUDING, BUT NOT LIMITED TO, THE IMPLIED WARRANTIES OF MERCHANTABILITY AND FITNESS FOR A PARTICULAR PURPOSE ARE DISCLAIMED. IN NO EVENT SHALL THE COPYRIGHT HOLDER BE LIABLE FOR ANY DIRECT, INDIRECT, INCIDENTAL,

SPECIAL, EXEMPLARY, OR CONSEQUENTIAL DAMAGES (INCLUDING, BUT NOT LIMITED TO, PROCUREMENT OF SUBSTITUTE GOODS OR SERVICES; LOSS OF USE, DATA, OR PROFITS; OR BUSINESS INTERRUPTION) HOWEVER CAUSED AND ON ANY THEORY OF LIABILITY, WHETHER IN CONTRACT, STRICT LIABILITY, OR TORT (INCLUDING NEGLIGENCE OR OTHERWISE) ARISING IN ANY WAY OUT OF THE USE OF THIS SOFTWARE, EVEN IF ADVISED OF THE POSSIBILITY OF SUCH DAMAGE.

---- Part 8: Apple Inc. copyright notice (BSD) ----

Copyright (c) 2007 Apple Inc. All rights reserved.

Redistribution and use in source and binary forms, with or without modification, are permitted provided that the following conditions are met:

1. Redistributions of source code must retain the above copyright notice, this list of conditions and the following disclaimer.
2. Redistributions in binary form must reproduce the above copyright notice, this list of conditions and the following disclaimer in the documentation and/or other materials provided with the distribution.
3. Neither the name of Apple Inc. ("Apple") nor the names of its contributors may be used to endorse or promote products derived from this software without specific prior written permission.

THIS SOFTWARE IS PROVIDED BY APPLE AND ITS CONTRIBUTORS "AS IS" AND ANY EXPRESS OR IMPLIED WARRANTIES, INCLUDING, BUT NOT LIMITED TO, THE IMPLIED WARRANTIES OF MERCHANTABILITY AND FITNESS FOR A PARTICULAR PURPOSE ARE DISCLAIMED. IN NO EVENT SHALL APPLE OR ITS CONTRIBUTORS BE LIABLE FOR ANY DIRECT, INDIRECT, INCIDENTAL, SPECIAL, EXEMPLARY, OR CONSEQUENTIAL DAMAGES (INCLUDING, BUT NOT LIMITED TO, PROCUREMENT OF SUBSTITUTE GOODS OR SERVICES; LOSS OF USE, DATA, OR PROFITS; OR BUSINESS INTERRUPTION) HOWEVER CAUSED AND ON ANY THEORY OF LIABILITY, WHETHER IN CONTRACT, STRICT LIABILITY, OR TORT (INCLUDING NEGLIGENCE OR OTHERWISE) ARISING IN ANY WAY OUT OF THE USE OF THIS SOFTWARE, EVEN IF ADVISED OF THE POSSIBILITY OF SUCH DAMAGE.

---- Part 9: ScienceLogic, LLC copyright notice (BSD) ----

Copyright (c) 2009, ScienceLogic, LLC

All rights reserved.

Redistribution and use in source and binary forms, with or without modification, are permitted provided that the following conditions are met:

- * Redistributions of source code must retain the above copyright notice, this list of conditions and the following disclaimer.
- * Redistributions in binary form must reproduce the above copyright notice, this list of conditions and the following disclaimer in the documentation and/or other materials provided with the distribution.
- * Neither the name of ScienceLogic, LLC nor the names of its contributors may be used to endorse or promote products derived from this software without specific prior written permission.

THIS SOFTWARE IS PROVIDED BY THE COPYRIGHT HOLDERS AND CONTRIBUTORS "AS IS" AND ANY EXPRESS OR IMPLIED WARRANTIES, INCLUDING, BUT NOT LIMITED TO, THE IMPLIED WARRANTIES OF MERCHANTABILITY AND FITNESS FOR A PARTICULAR PURPOSE ARE DISCLAIMED. IN NO EVENT SHALL THE COPYRIGHT HOLDERS OR CONTRIBUTORS BE LIABLE

FOR ANY DIRECT, INDIRECT, INCIDENTAL, SPECIAL, EXEMPLARY, OR CONSEQUENTIAL DAMAGES (INCLUDING, BUT NOT LIMITED TO, PROCUREMENT OF SUBSTITUTE GOODS OR SERVICES; LOSS OF USE, DATA, OR PROFITS; OR BUSINESS INTERRUPTION) HOWEVER CAUSED AND ON ANY THEORY OF LIABILITY, WHETHER IN CONTRACT, STRICT LIABILITY, OR TORT (INCLUDING NEGLIGENCE OR OTHERWISE) ARISING IN ANY WAY OUT OF THE USE OF THIS SOFTWARE, EVEN IF ADVISED OF THE POSSIBILITY OF SUCH DAMAGE.

LEADTOOLS

Copyright (C) 1991-2009 LEAD Technologies, Inc.

CMap Resources

Copyright 1990-2009 Adobe Systems Incorporated.

All rights reserved.

Copyright 1990-2010 Adobe Systems Incorporated.

All rights reserved.

Redistribution and use in source and binary forms, with or without modification, are permitted provided that the following conditions are met:

Redistributions of source code must retain the above copyright notice, this list of conditions and the following disclaimer.

Redistributions in binary form must reproduce the above copyright notice, this list of conditions and the following disclaimer in the documentation and/or other materials provided with the distribution.

Neither the name of Adobe Systems Incorporated nor the names of its contributors may be used to endorse or promote products derived from this software without specific prior written permission.

THIS SOFTWARE IS PROVIDED BY THE COPYRIGHT HOLDERS AND CONTRIBUTORS "AS IS" AND ANY EXPRESS OR IMPLIED WARRANTIES, INCLUDING, BUT NOT LIMITED TO, THE IMPLIED WARRANTIES OF MERCHANTABILITY AND FITNESS FOR A PARTICULAR PURPOSE ARE DISCLAIMED. IN NO EVENT SHALL THE COPYRIGHT HOLDER OR CONTRIBUTORS BE LIABLE FOR ANY DIRECT, INDIRECT, INCIDENTAL, SPECIAL, EXEMPLARY, OR CONSEQUENTIAL DAMAGES (INCLUDING, BUT NOT LIMITED TO, PROCUREMENT OF SUBSTITUTE GOODS OR SERVICES; LOSS OF USE, DATA, OR PROFITS; OR BUSINESS INTERRUPTION) HOWEVER CAUSED AND ON ANY THEORY OF LIABILITY, WHETHER IN CONTRACT, STRICT LIABILITY, OR TORT (INCLUDING NEGLIGENCE OR OTHERWISE) ARISING IN ANY WAY OUT OF THE USE OF THIS SOFTWARE, EVEN IF ADVISED OF THE POSSIBILITY OF SUCH DAMAGE.

MIT License

Copyright (c) 1998, 1999, 2000 Thai Open Source Software Center Ltd

Permission is hereby granted, free of charge, to any person obtaining a copy of this software and associated documentation files (the "Software"), to deal in the Software without restriction, including without limitation the rights to use, copy, modify, merge, publish, distribute, sublicense, and/or sell copies of the Software, and to permit persons to whom the Software is furnished to do so, subject to the following conditions:

The above copyright notice and this permission notice shall be included in all copies or substantial portions of the Software.

THE SOFTWARE IS PROVIDED "AS IS", WITHOUT WARRANTY OF ANY KIND, EXPRESS OR IMPLIED, INCLUDING BUT NOT LIMITED TO THE WARRANTIES OF MERCHANTABILITY, FITNESS FOR A PARTICULAR PURPOSE AND NONINFRINGEMENT. IN NO EVENT SHALL THE AUTHORS OR COPYRIGHT HOLDERS BE LIABLE FOR ANY CLAIM, DAMAGES OR OTHER LIABILITY, WHETHER IN AN ACTION OF CONTRACT, TORT OR OTHERWISE, ARISING FROM, OUT OF OR IN CONNECTION WITH THE SOFTWARE OR THE USE OR OTHER DEALINGS IN THE SOFTWARE.

Written by Joel Sherrill <joel@OARcorp.com>.

COPYRIGHT (c) 1989-2000.

On-Line Applications Research Corporation (OAR).

Permission to use, copy, modify, and distribute this software for any purpose without fee is hereby granted, provided that this entire notice is included in all copies of any software which is or includes a copy or modification of this software.

THIS SOFTWARE IS BEING PROVIDED "AS IS", WITHOUT ANY EXPRESS OR IMPLIED WARRANTY. IN PARTICULAR, THE AUTHOR MAKES NO REPRESENTATION OR WARRANTY OF ANY KIND CONCERNING THE MERCHANTABILITY OF THIS SOFTWARE OR ITS FITNESS FOR ANY PARTICULAR PURPOSE.

(1) Red Hat Incorporated

Copyright (c) 1994-2009 Red Hat, Inc. All rights reserved.

This copyrighted material is made available to anyone wishing to use, modify, copy, or redistribute it subject to the terms and conditions of the BSD License. This program is distributed in the hope that it will be useful, but WITHOUT ANY WARRANTY expressed or implied, including the implied warranties of MERCHANTABILITY or FITNESS FOR A PARTICULAR PURPOSE. A copy of this license is available at <http://www.opensource.org/licenses>. Any Red Hat trademarks that are incorporated in the source code or documentation are not subject to the BSD License and may only be used or replicated with the express permission of Red Hat, Inc.

(2) University of California, Berkeley

Copyright (c) 1981-2000 The Regents of the University of California.

All rights reserved.

Redistribution and use in source and binary forms, with or without modification, are permitted provided that the following conditions are met:

* Redistributions of source code must retain the above copyright notice, this list of conditions and the following disclaimer.

* Redistributions in binary form must reproduce the above copyright notice, this list of conditions and the following disclaimer in the documentation and/or other materials provided with the distribution.

* Neither the name of the University nor the names of its contributors may be used to endorse or promote products derived from this software without specific prior written permission.

THIS SOFTWARE IS PROVIDED BY THE COPYRIGHT HOLDERS AND CONTRIBUTORS "AS IS" AND ANY EXPRESS OR IMPLIED WARRANTIES, INCLUDING, BUT NOT LIMITED TO, THE IMPLIED WARRANTIES OF MERCHANTABILITY AND FITNESS FOR A PARTICULAR PURPOSE ARE DISCLAIMED. IN NO EVENT SHALL THE COPYRIGHT OWNER OR CONTRIBUTORS BE LIABLE FOR ANY DIRECT, INDIRECT, INCIDENTAL, SPECIAL, EXEMPLARY, OR CONSEQUENTIAL DAMAGES (INCLUDING, BUT NOT LIMITED TO, PROCUREMENT OF SUBSTITUTE GOODS OR SERVICES; LOSS OF USE, DATA, OR PROFITS; OR BUSINESS INTERRUPTION) HOWEVER CAUSED AND ON ANY THEORY OF LIABILITY, WHETHER IN CONTRACT, STRICT LIABILITY, OR TORT (INCLUDING NEGLIGENCE OR OTHERWISE) ARISING IN ANY WAY OUT OF THE USE OF THIS SOFTWARE, EVEN IF ADVISED OF THE POSSIBILITY OF SUCH DAMAGE.

The following applies only to products supporting Wi-Fi.

(c) 2009-2013 by Jeff Mott. All rights reserved.

Redistribution and use in source and binary forms, with or without modification, are permitted provided that the following conditions are met:

* Redistributions of source code must retain the above copyright notice, this list of conditions, and the following disclaimer.

* Redistributions in binary form must reproduce the above copyright notice, this list of conditions, and the following disclaimer in the documentation or other materials provided with the distribution.

* Neither the name CryptoJS nor the names of its contributors may be used to endorse or promote products derived from this software without specific prior written permission.

THIS SOFTWARE IS PROVIDED BY THE COPYRIGHT HOLDERS AND CONTRIBUTORS "AS IS," AND ANY EXPRESS OR IMPLIED WARRANTIES, INCLUDING, BUT NOT LIMITED TO, THE IMPLIED WARRANTIES OF MERCHANTABILITY AND FITNESS FOR A PARTICULAR PURPOSE, ARE DISCLAIMED. IN NO EVENT SHALL THE COPYRIGHT HOLDER OR CONTRIBUTORS BE LIABLE FOR ANY DIRECT, INDIRECT, INCIDENTAL, SPECIAL, EXEMPLARY, OR CONSEQUENTIAL DAMAGES (INCLUDING, BUT NOT LIMITED TO, PROCUREMENT OF SUBSTITUTE GOODS OR SERVICES; LOSS OF USE, DATA, OR PROFITS; OR BUSINESS INTERRUPTION) HOWEVER CAUSED AND ON ANY THEORY OF LIABILITY, WHETHER IN CONTRACT, STRICT LIABILITY, OR TORT (INCLUDING NEGLIGENCE OR OTHERWISE) ARISING IN ANY WAY OUT OF THE USE OF THIS SOFTWARE, EVEN IF ADVISED OF THE POSSIBILITY OF SUCH DAMAGE.

My Image Garden Guide

What Is My Image Garden?

▶ **My Image Garden Features**

- To Utilize Images Imported to the Computer
- Selecting Images, PDF Files, and Videos

▶ **Starting My Image Garden**

My Image Garden Features

My Image Garden is an application for utilizing photos taken with digital cameras and other images saved on your computer.

Features at Glance

- [Getting Layout Suggestions from My Image Garden](#)
- [Automatically Organize Photos](#)
- [Print Photos and Documents](#)
- [Print Personalized Items](#)
- [Print Disc Labels \(CD/DVD/BD\)](#)
- [Capture and Print Still Images from Videos](#)
- [Scan Photos and Documents](#)
- [Correct/Enhance Photos](#)

➤➤ Note

- File formats available in My Image Garden vary by function. For details, see File Formats.
- If you are using OS X Mountain Lion v10.8.5, change Mac OS settings as needed beforehand to utilize images imported from a digital camera, picture CD, and other media quickly in My Image Garden. For details, see [To Utilize Images Imported to the Computer](#).

Getting Layout Suggestions from My Image Garden

My Image Garden employs a technology called "Image Assorting Technology" that provides the following functions.

- An image analysis function to group images by person by detecting faces in photos, and to register images and videos to a calendar automatically based on the shooting date and time.
- An item recommendation function that automatically recommends layouts for analyzed images.

This technology makes it easy to create and print various items such as collages and cards.

- Utilizing the Item Recommendation Function

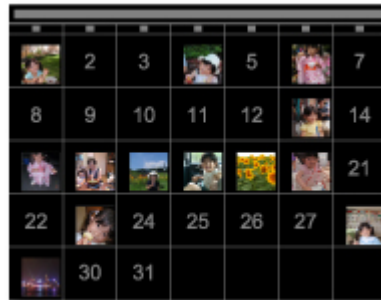


Automatically Organize Photos

Images analyzed in My Image Garden appear in the **Unregistered People** view or grouped by person in the **People** view. They also appear in the **Calendar** view based on the shooting date and time. Register

people's profiles or event information to organize a large number of images or to search quickly for the images you want.

- Registering People
- Registering Events



Print Photos and Documents

Preview your favorite photos easily before you print. Documents saved as PDF files can also be printed.

- [Printing Photos and Documents](#)



Print Personalized Items

Combine your favorite photos with preset templates to create and print personalized items such as collages and cards.

- [Creating and Printing Items](#)



Print Disc Labels (CD/DVD/BD)

Create and print personalized disc labels (CD/DVD/BD) from your favorite photos.

■ [Printing Disc Labels \(CD/DVD/BD\)](#)



Capture and Print Still Images from Videos

Select your favorite scenes from videos and print them as still images.

■ Capturing and Printing Still Images from Videos



Scan Photos and Documents

Scan photos and documents easily by automatically detecting the item type.

■ [Easy Scanning with Auto Scan](#)



Correct/Enhance Photos

Correct red eye or adjust the brightness and contrast of images.

■ [Correcting/Enhancing Photos](#)



▶▶ Note

- In My Image Garden, there are many methods for selecting images, PDF files, and videos. For details, see [Selecting Images, PDF Files, and Videos](#).

To Utilize Images Imported to the Computer

If you are using OS X Mountain Lion v10.8.5, depending on the application to be started upon connecting a digital camera or inserting a picture CD, images may be saved in a special format and thus may not be utilized in other applications. In that case, see this page and change to an application that saves images to a standard folder.

■ [Checking/Changing the Application to Start upon Digital Camera Connection](#)

■ [Checking/Changing the Application to Start upon Picture CD Insertion](#)

▶▶▶ Important

- If you are using My Image Garden on OS X Mountain Lion v10.8.5, images in the iPhoto library cannot be utilized.

▶▶▶ Note

- If you are using OS X Mavericks v10.9 or later, images in the iPhoto library can be utilized.
- If you are using OS X Yosemite v10.10.3 or later, images in the iPhoto library and **Photo** can be utilized.

Checking/Changing the Application to Start upon Digital Camera Connection

You can check/change the application to be started upon connecting a digital camera or inserting an SD card by following the steps below. To utilize images imported to the computer in My Image Garden, it is recommended that you start Image Capture and save the images.

1. From the **Go** menu of Finder, select **Applications**, then double-click the **iPhoto** icon.

iPhoto starts.

▶▶▶ Note

- If the message "Do you want to use iPhoto when you connect your digital camera?" appears, click **No**.

2. Select **Preferences...** from the **iPhoto** menu.
3. Check **Connecting camera opens** on the **General** tab.

When an application other than Image Capture is specified:

Specify **Image Capture**. Thereafter, Image Capture will start upon connecting a digital camera to or inserting an SD card into your computer. You can utilize various functions by setting My Image Garden to analyze the folder in which images imported with Image Capture are saved. Refer to the following for details on the setting procedure.

- Saving Digital Camera Images to a Folder Subject to Image Analysis

When Image Capture is specified:

The images on the digital camera or SD card are saved to the folder specified for **Import To** in the Image Capture screen. You can utilize various functions by adding the folder in which images imported

with Image Capture are saved to **Perform Image Analysis in the Following Folder(s)** in the Preferences dialog of My Image Garden.

■ Image Analysis Settings Tab

Checking/Changing the Application to Start upon Picture CD Insertion

You can check/change the application to be started upon inserting a picture CD by following the steps below.

1. From the **Go** menu of Finder, select **Applications**, then double-click the **System Preferences** icon.

The **System Preferences** window appears.

2. Click **CDs & DVDs**.

3. Check **When you insert a picture CD**.

Follow the steps below if an application other than My Image Garden is specified.

4. Select **Open other application...** for **When you insert a picture CD**.

5. Select the **My Image Garden** icon, then click **Choose**.

Thereafter, My Image Garden will start upon inserting a picture CD in the disc drive.

▶▶ Note

- The picture CD will appear below the computer name in Global Menu on the left side of the screen.

Selecting Images, PDF Files, and Videos

In My Image Garden, there are many screens for selecting images, PDF files, and videos. You can select images, PDF files, or videos by clicking the thumbnails displayed in the screens. White frames appear around the selected files.

- [Searching by date of shooting or creation \(Calendar view\)](#)
- [Selecting files of registered events \(Event view\)](#)
- [Selecting files of registered people \(People view\)](#)
- [Searching for photos containing people \(Unregistered People view\)](#)
- [Selecting files saved in specific folders \(folder view\)](#)

▶▶▶ Important

- For PDF files, only those created in My Image Garden or IJ Scan Utility/IJ Scan Utility Lite are supported. PDF files created or edited in other applications are not supported.
- You cannot print images and PDF files at the same time. Print images and PDF files separately.
- To select multiple files in the same folder at the same time, click the thumbnails of images, PDF files, or videos while pressing the command key or shift key. You cannot select images in different folders or views at the same time.

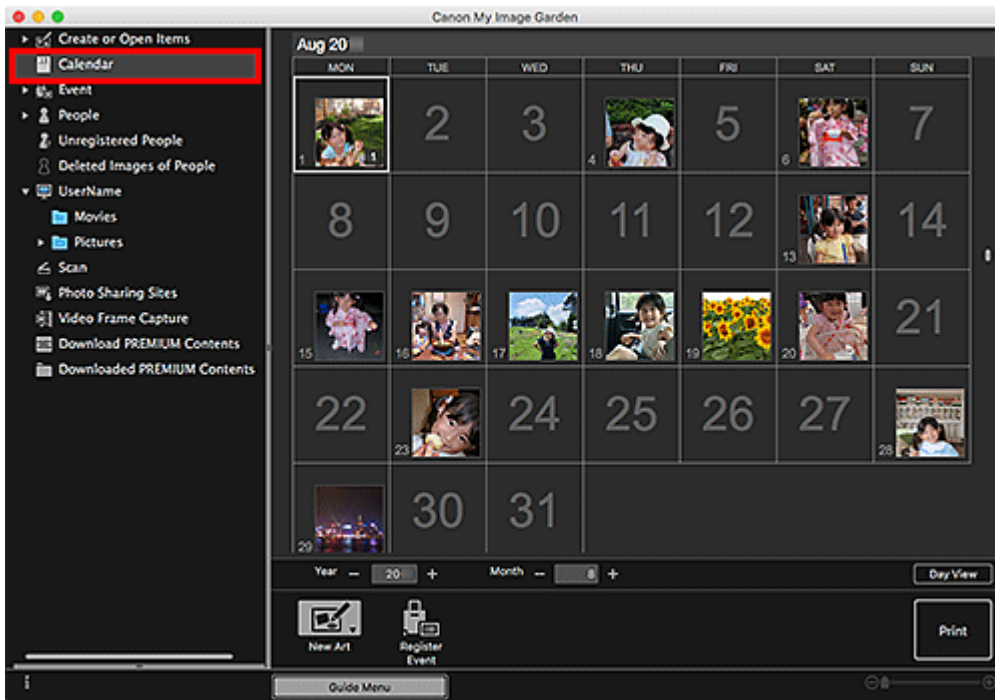
▶▶▶ Note

- You can also select still images by capturing them from videos.
 - Capturing and Printing Still Images from Videos
- You can also select images downloaded from photo sharing sites on the Internet.
 - Downloading Images from Photo Sharing Sites
- For videos, only MOV or MP4 format videos recorded with Canon digital cameras or digital camcorders appear.

Calendar View (Images, PDF Files, and Videos)

In Month View:

When you click **Calendar**, the view switches to **Calendar** set to Month View and a thumbnail of one of the images or PDF files registered to the date appears for each date. When you click a thumbnail, all images, PDF files, and videos contained in the date will be selected.

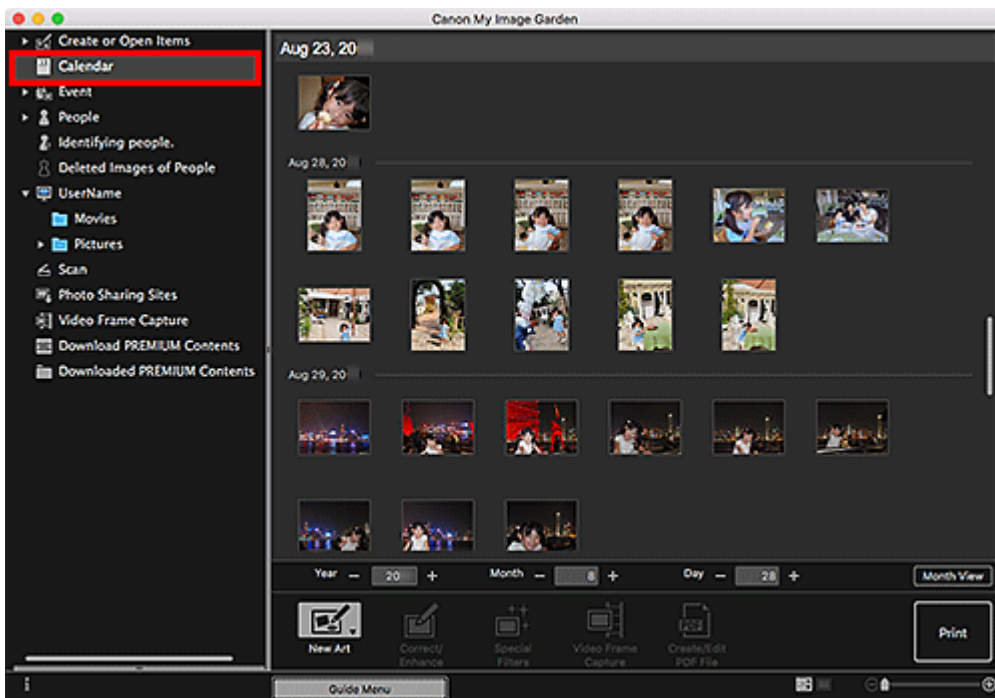


➤➤➤ Note

- Click a date and select **Select All** from the **Edit** menu to select all dates of the month.

In Day View:

When you click **Day View** in the **Calendar** view set to Month View, the view switches to **Calendar** set to Day View, and images, PDF files, and videos appear as thumbnails by date.

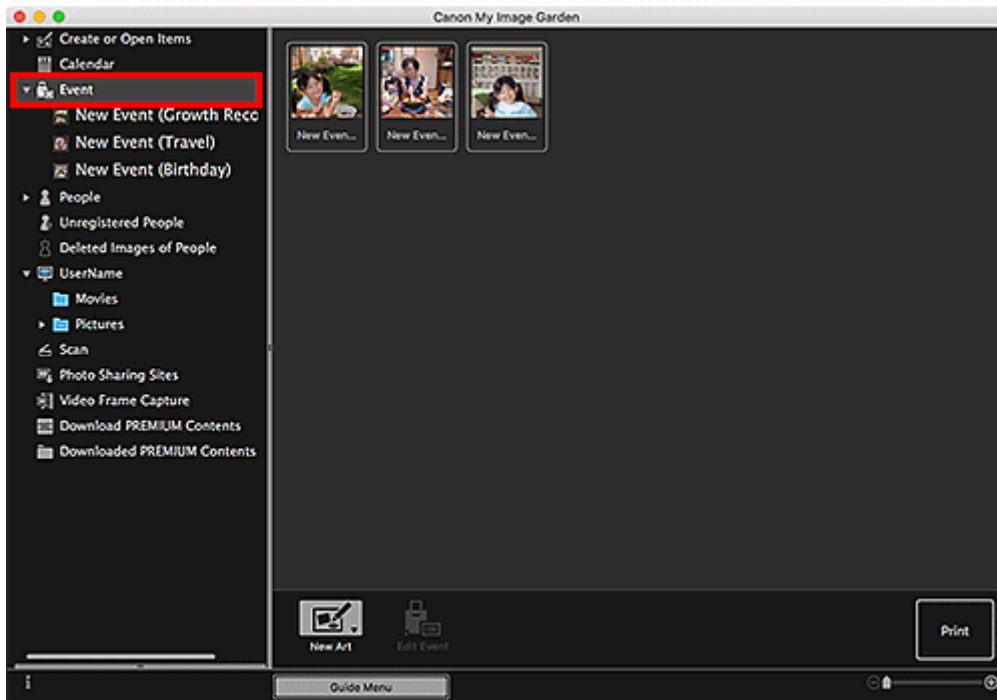


»» Note

- Click a thumbnail of an image or PDF file and select **Select All** from the **Edit** menu to select all images, PDF files, and videos of the date.

Event View (Images, PDF Files, and Videos)

When you click **Event**, the view switches to **Event** and the registered events with their representative images appear as thumbnails. When you click a thumbnail, all images contained in the event will be selected.

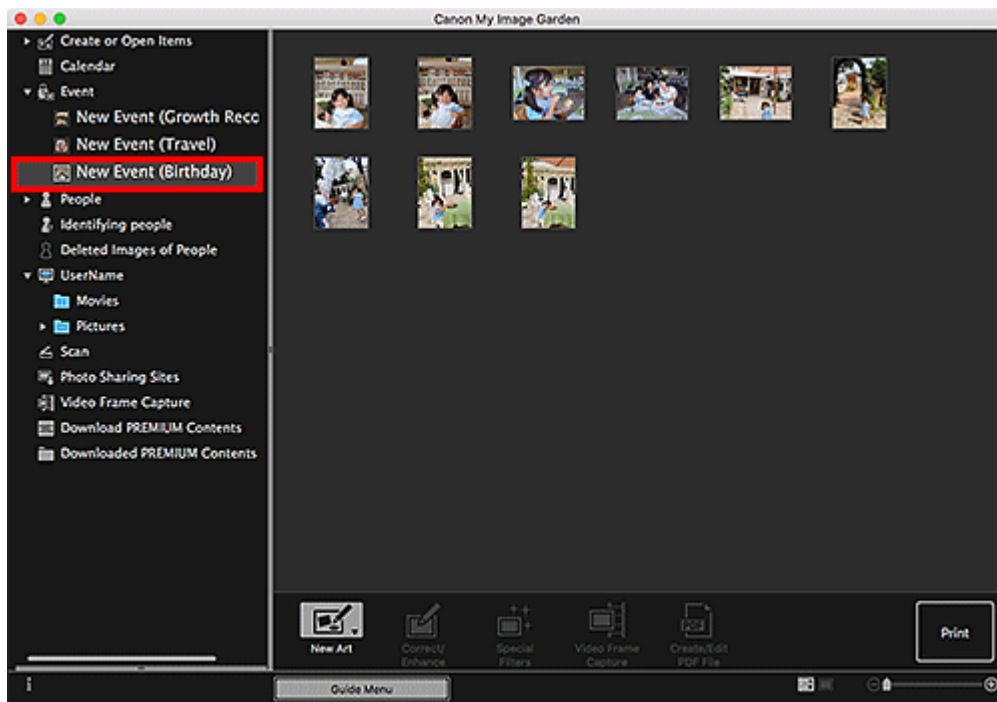


»» Note

- Select **Select All** from the **Edit** menu to select all events.

In Expanded display:

When you click an event name displayed below **Event**, or double-click an event in the **Event** view, images, PDF files, and videos contained in the event appear as thumbnails.

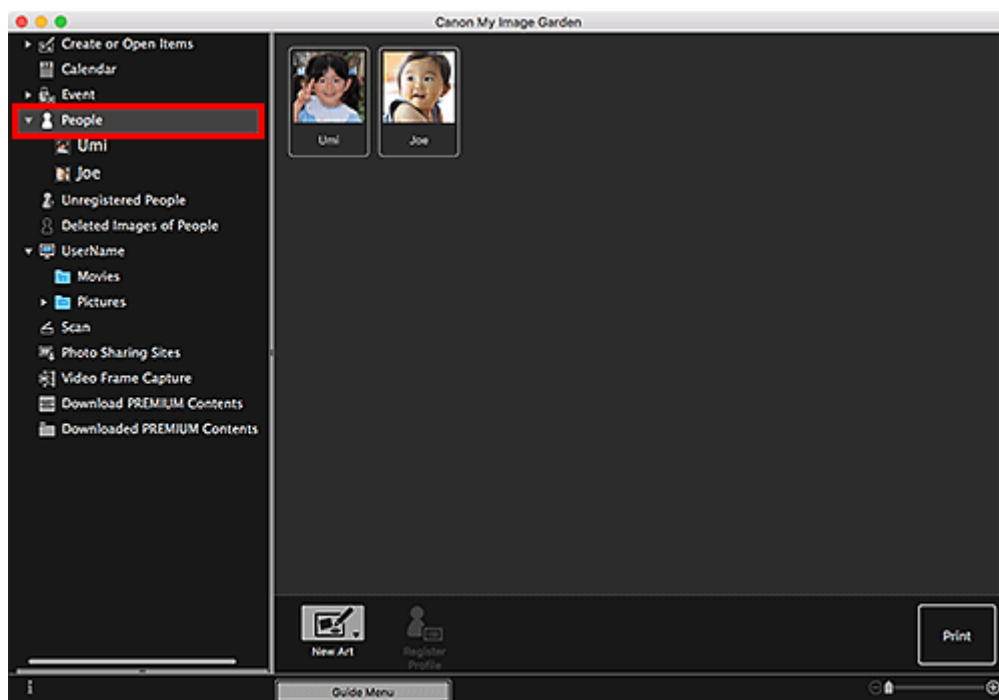


»» Note

- Double-clicking an event label in the Month View calendar also displays images, PDF files, and videos contained in the event as thumbnails.
- Select **Select All** from the **Edit** menu to select all images, PDF files, and videos.

People View (Images)

When you click **People**, the view switches to **People** and the images of registered people appear as thumbnails. When you click a thumbnail, all images contained in the person will be selected.

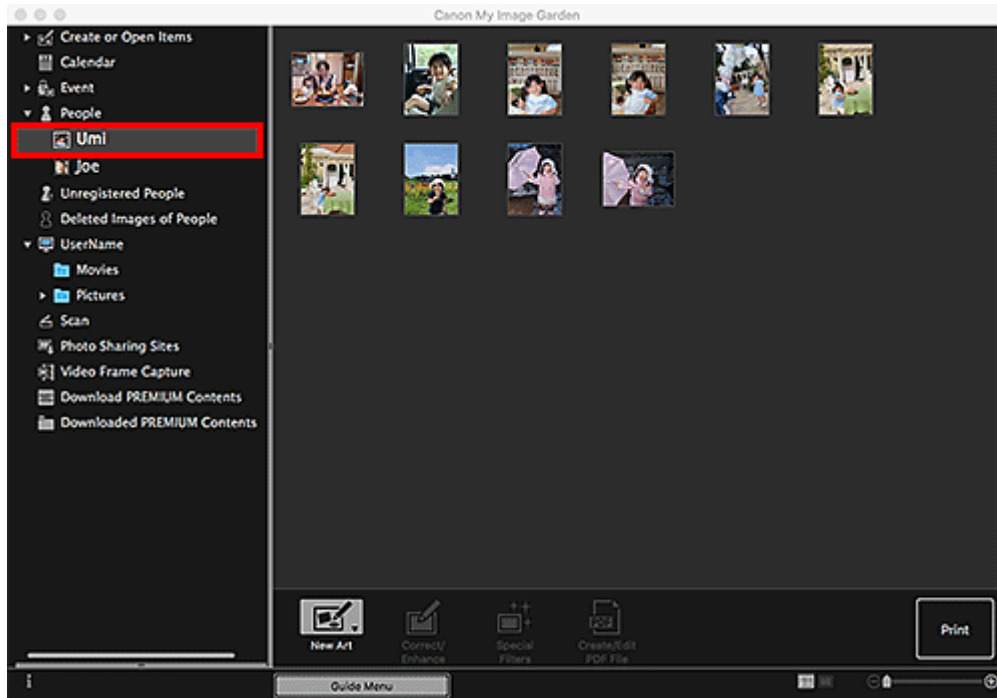


▶▶▶ Note

- Select **Select All** from the **Edit** menu to select all people.

In Expanded display:

When you click a name displayed below **People**, or double-click a person in the **People** view, the view switches to the expanded display of **People** and the images registered to the person appear as thumbnails.

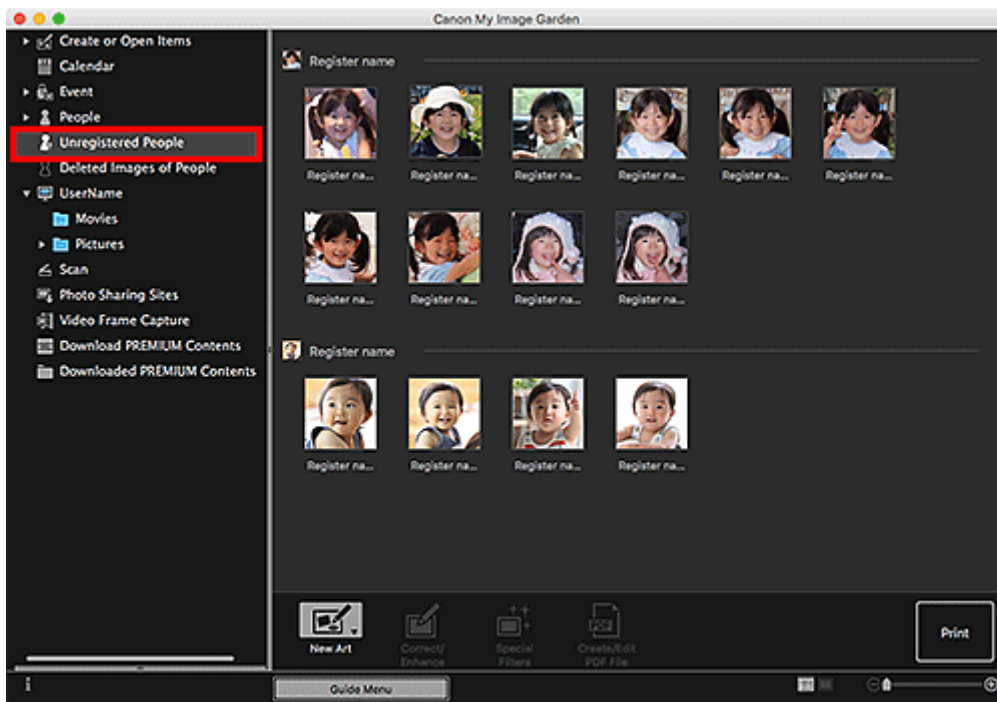


▶▶▶ Note

- Select **Select All** from the **Edit** menu to select all images.

Unregistered People View (Images)

When you click **Unregistered People**, the view switches to **Unregistered People** and images detected as a result of image analysis appear as thumbnails.

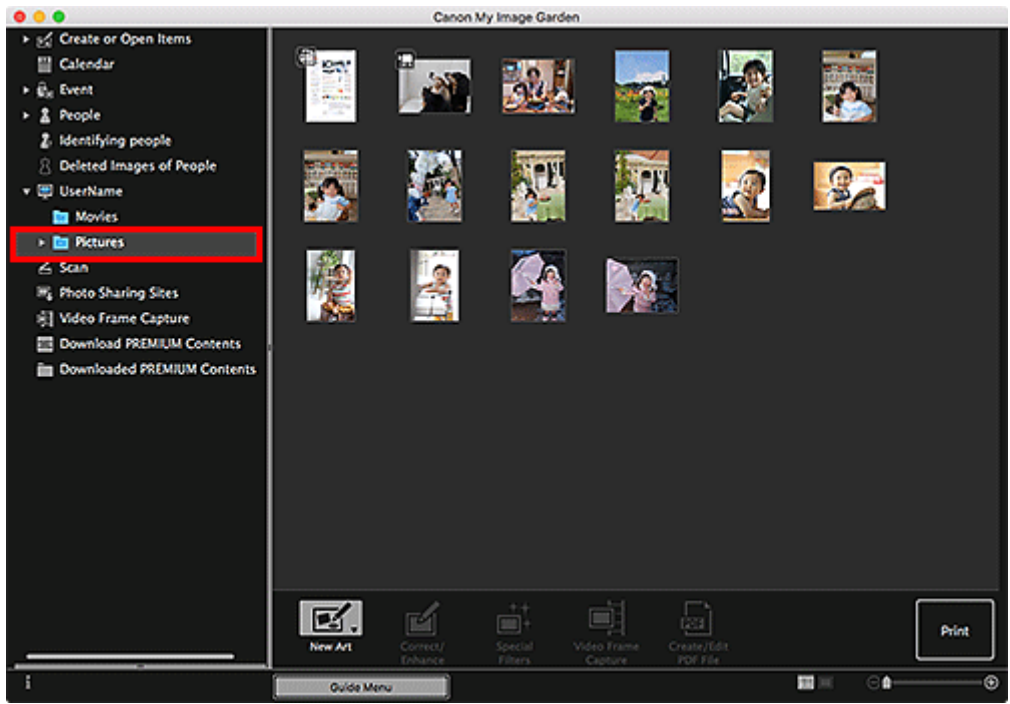


➤➤➤ Note

- Click a smaller thumbnail to select all images that are automatically organized as those of the same person.
- Click a thumbnail of an image and select **Select All** from the **Edit** menu to select all images that are automatically organized as those of the same person.
- **Identifying people** appears at **Unregistered People** in Global Menu on the left side of the screen during image analysis.

Folder View (Images, PDF Files, and Videos)


When you select a folder in the folder tree, images, PDF files, and videos in the folder appear as thumbnails.

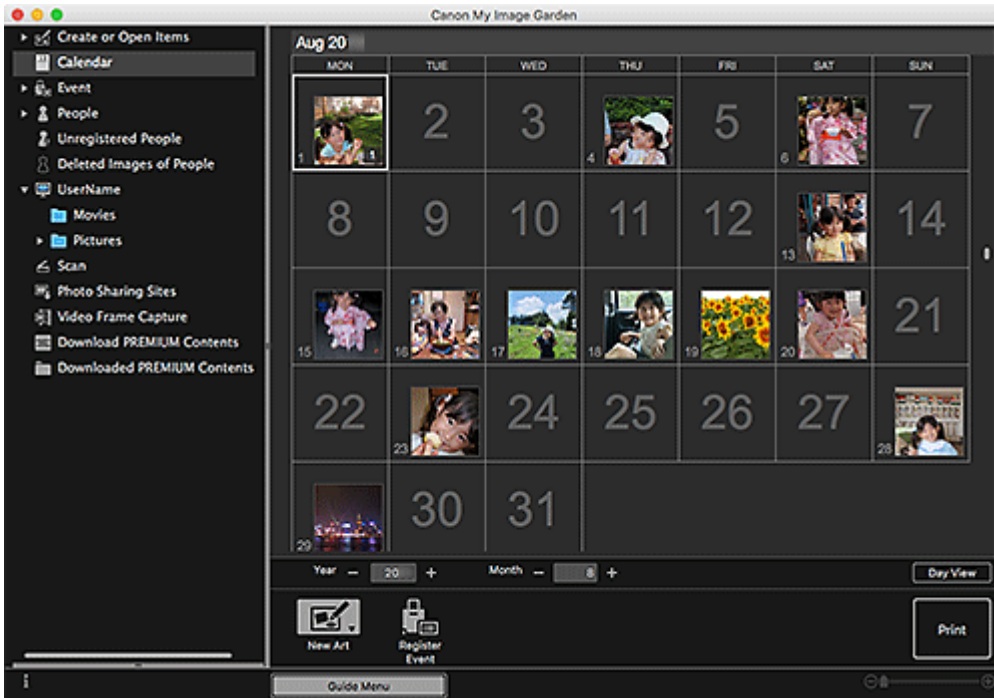


Starting My Image Garden

My Image Garden can be started in the following ways.



- Click  (Start My Image Garden) on Quick Menu
- Select **Applications** from **Go** menu of Finder, and then double-click **Canon Utilities > My Image Garden > My Image Garden** icon.



▶▶▶ Note

- My Image Garden analyzes the images in the registered folders and displays them in the **Calendar** view, **Unregistered People** view, or **People** view, or uses them in recommended layouts that appear in Image Display.
Folders can be registered in the screen that appears when starting My Image Garden for the first time or in the **Preferences** dialog. The Pictures folder is selected by default.
- To change the folders that are subject to image analysis, see **Image Analysis Settings** Tab.

Printing

- ▶ **Printing Photos and Documents**
- ▶ **Printing Disc Labels (CD/DVD/BD)**
- ▶ **Creating and Printing Items**
 - **Printing Photos in a Variety of Layouts**

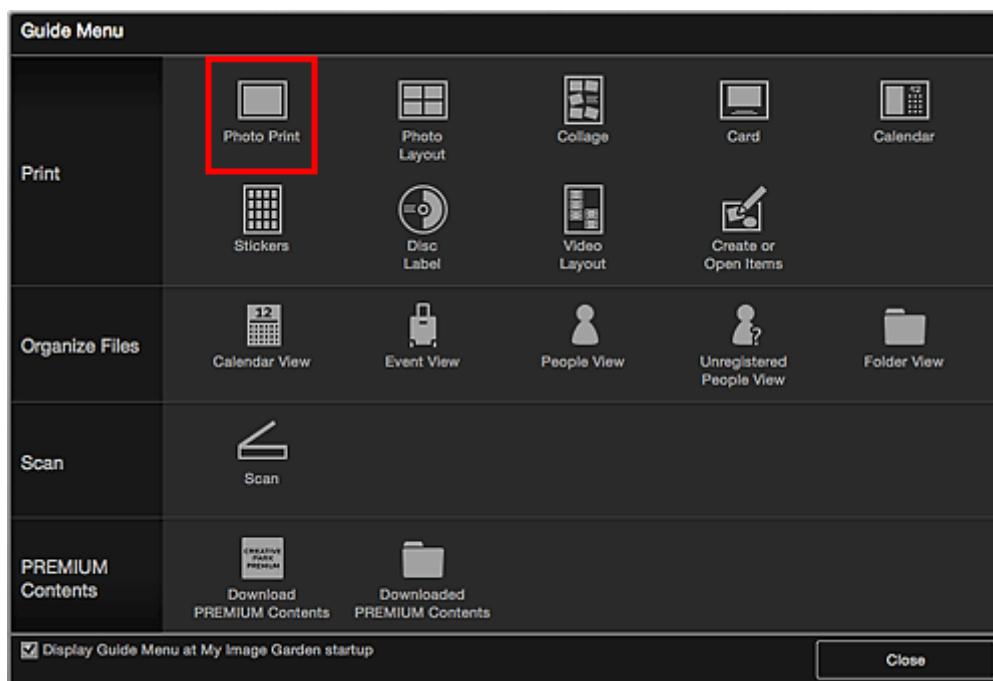
Printing Photos and Documents

Print your favorite photos easily.

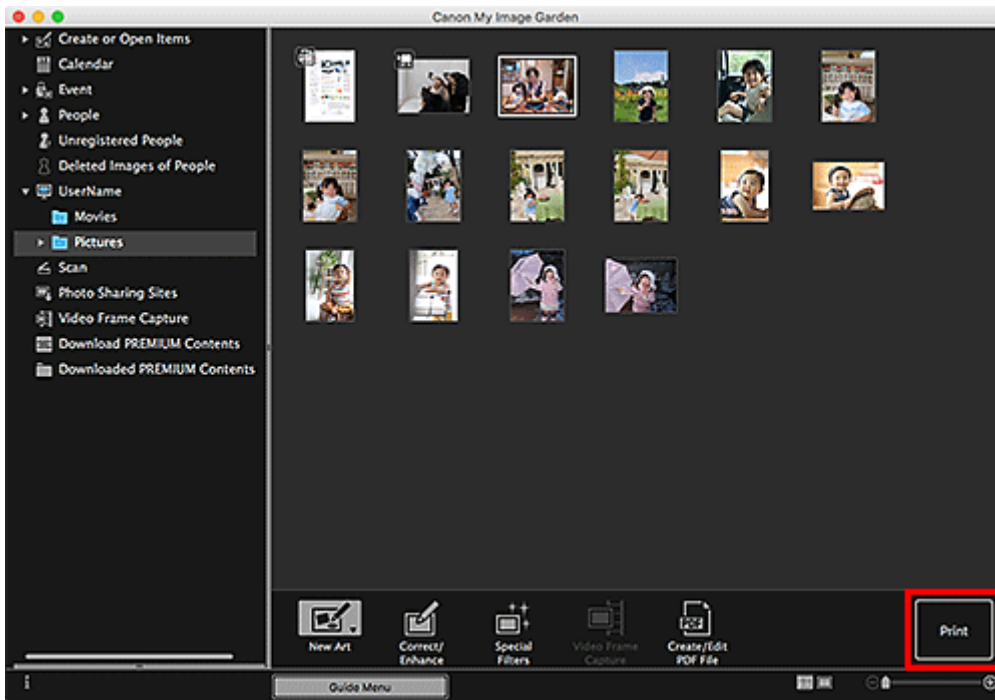
Documents (PDF files) created in My Image Garden can also be printed.



1. Make sure printer is turned on.
2. [Start My Image Garden.](#)
3. From **Guide Menu** screen, click **Photo Print**.



4. [Select image\(s\) or PDF file\(s\) you want to print.](#)
5. Click **Print**.

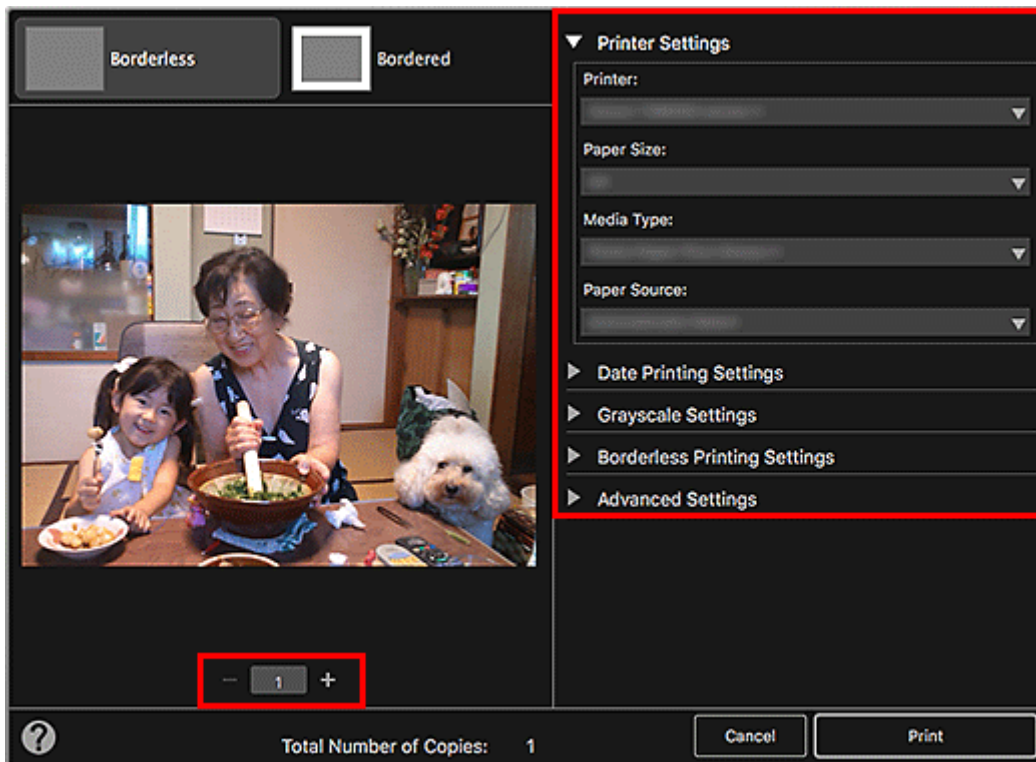


The Print Settings dialog appears.

▶▶▶ Note

- An example of printing from the folder view.

6. Specify number of copies to print, printer and paper to use, and other settings.



▶▶▶ Note

- For details on the Print Settings dialog, see Print Settings Dialog.

7. Load paper.

8. Click **Print**.

A message appears.

9. Click **OK**.

The Print dialog appears.

▶▶▶ Important

- If you change the printer in the Print dialog, a message appears and printing will be canceled.

10. Click **Print**.

▶▶▶ Important

- If you print a large number of high resolution images at one time, printing may pause halfway through.
- If you print in a bordered layout, the margins on the left and right or the top and bottom may become wider than the other.

▶▶▶ Note

- Images can be corrected or enhanced before printing as needed.
 - [Correcting/Enhancing Photos](#)
 - Enhancing Photos Using Special Filters
- Colors may fade with time if the printed paper is left for a long period of time.
After printing, dry the paper sufficiently, and then store or display indoors at room temperature and normal humidity, avoiding high temperatures, high humidity, and direct sunlight.
To avoid direct exposure to air, we recommend that you store the paper in an album, plastic folder, photo frame, or other container.

Printing Disc Labels (CD/DVD/BD)

Create and print personalized disc labels (CD/DVD/BD) from your favorite photos.

▶▶▶ Note

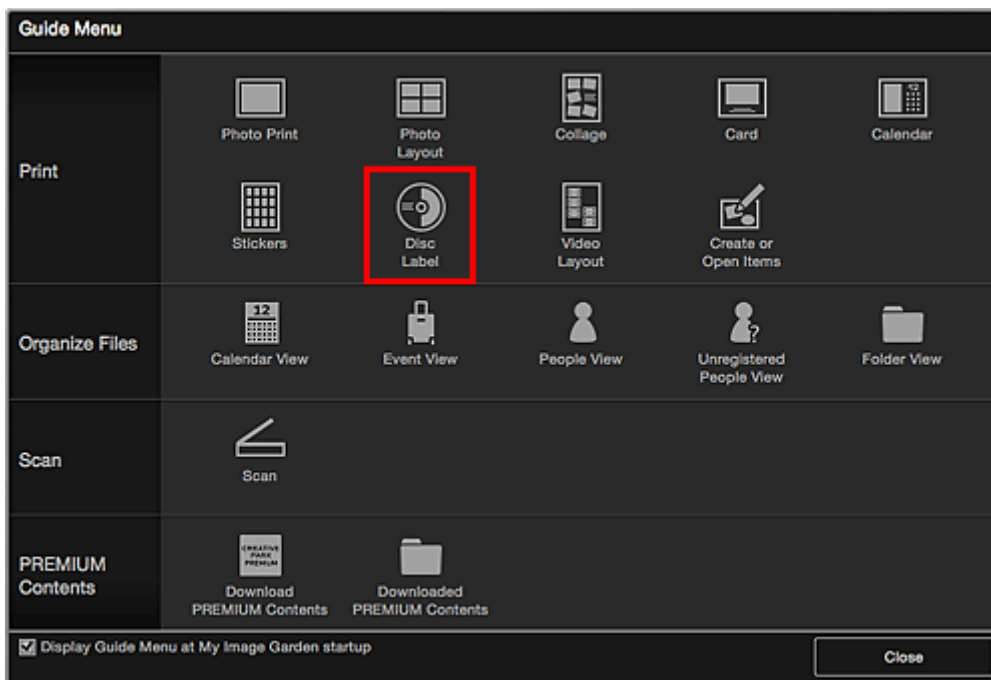
- This function is available on supported models only.



▶▶▶ Important

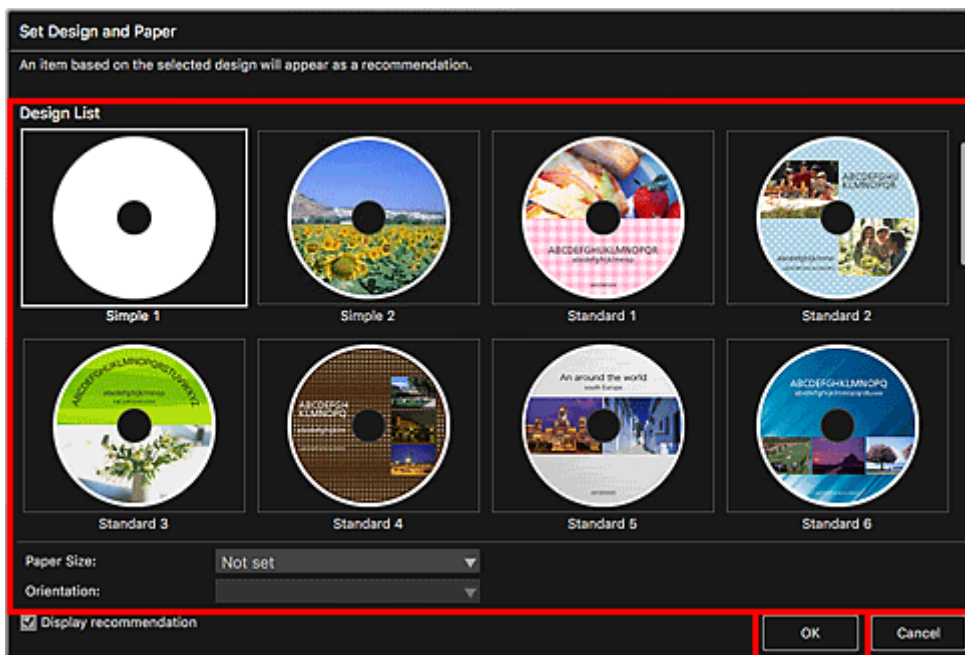
- Do not set the disc tray until a message prompting you to load a printable disc appears. Loading a printable disc while the printer is in operation may damage the printer.
- To set or remove the disc tray, click Home to return to the top page of the Online Manual for your model and search for "Placing a Printable Disc."

1. [Start My Image Garden.](#)
2. From **Guide Menu** screen, click **Disc Label**.



The **Set Design and Paper** dialog appears.

3. Specify settings such as design and **Paper Size**, and then click **OK**.



The disc label (CD/DVD/BD) appears in the Item edit screen.

▶▶▶ Note

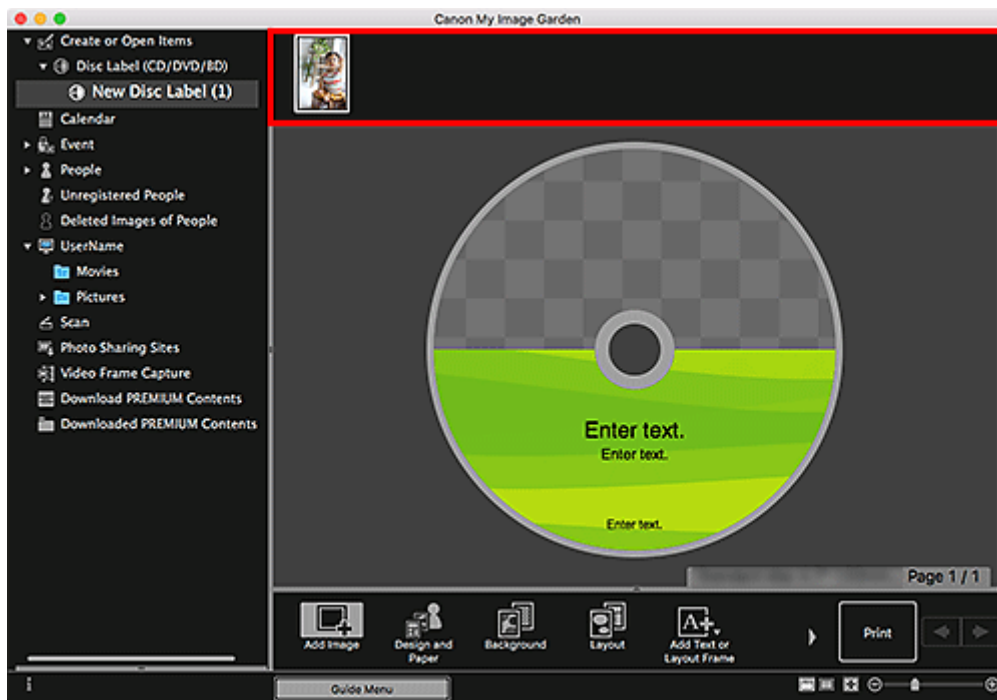
- The layout may not be as expected depending on the photo information or analysis results of the selected images.

4. From **Add Image**, select image(s) you want to use for disc label (CD/DVD/BD).

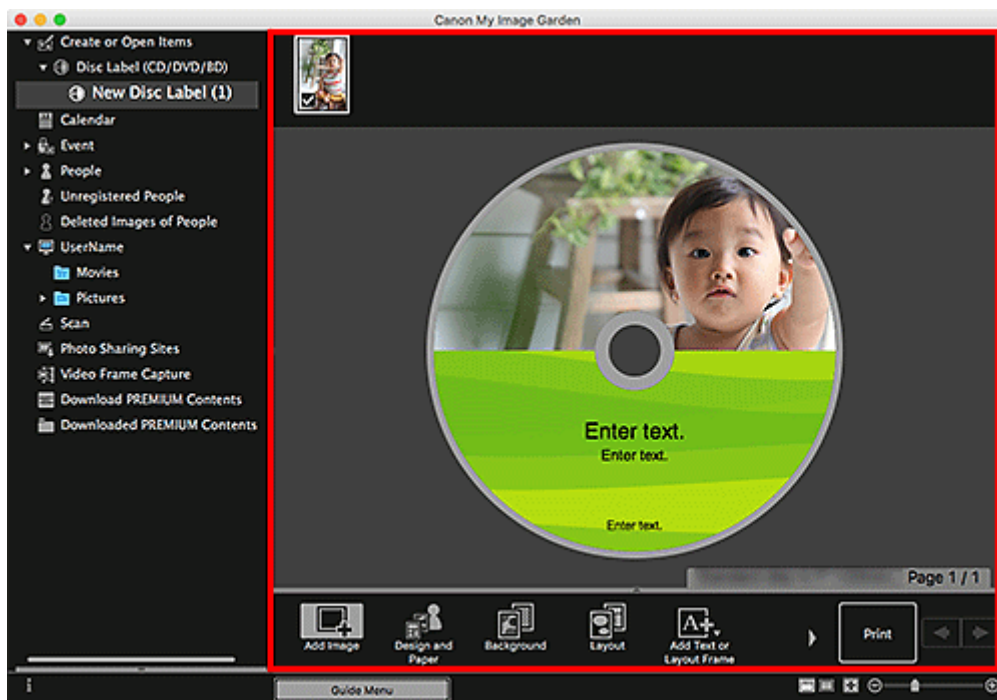
The image(s) appear in the Materials area.

5. Drag image from Materials area, and drop it to desired layout frame.


When you move an image to a layout frame, a cross icon appears on the image.



6. Edit item according to preference.



▶▶▶ Note

- The print area can be set in the **Advanced Settings** dialog displayed by clicking **Advanced...** at the bottom of the screen. If **Advanced...** is not displayed, click  (Right Scroll).
- In cases such as when **Identifying people** appears at **Unregistered People** in Global Menu on the left side of the screen, the result may not be as expected since automatic placement does not apply to images for which analysis has not been completed.
- To swap automatically placed images, see Inserting Images.

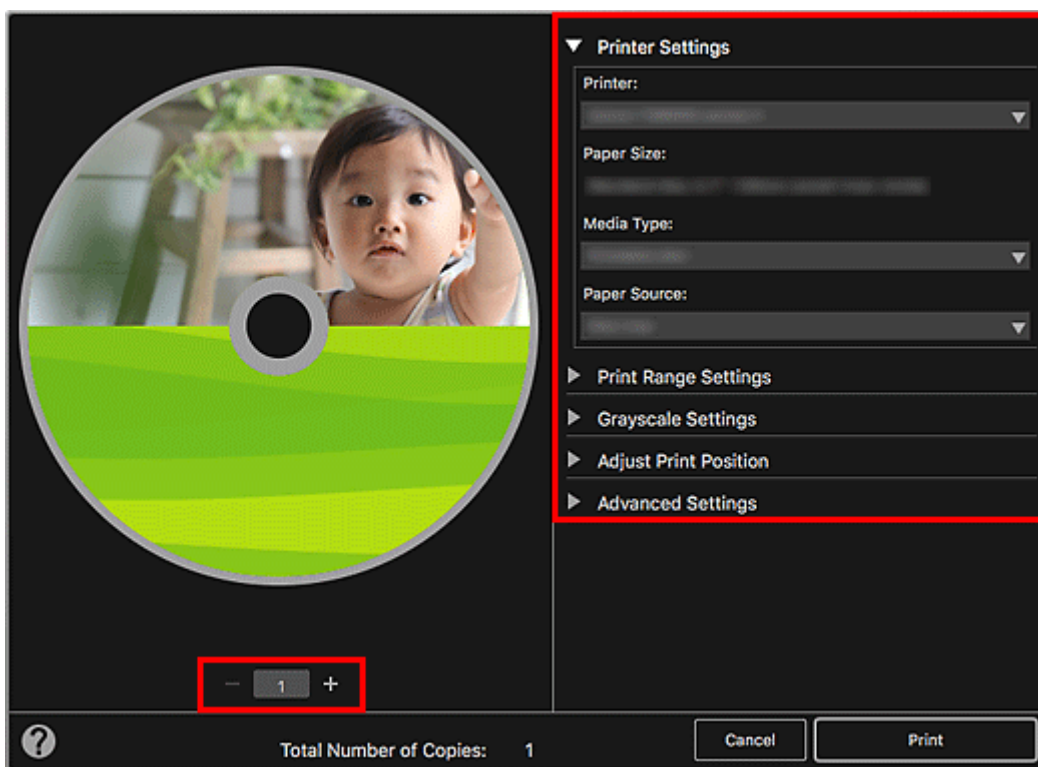
7. Click **Print** at bottom right of screen.

The Print Settings dialog appears.

Important

- If the Print Settings dialog does not appear, make sure the **Print/scan using AirPrint** checkbox is deselected in the Preferences dialog.

8. Specify number of copies to print, printer and paper to use, and other settings.



Note

- For details on the Print Settings dialog, see Print Settings Dialog.

9. Click **Print**.

A message appears.

10. Click **OK**.

The Print dialog appears.

Important

- If you change the printer in the Print dialog, a message appears and printing will be canceled.

11. Click **Print**.

When a message appears, set the disc tray.



Starting disc label printing. 1. Open the operation panel and remove the disc tray. 2. Insert the disc tray with a printable disc into the disc tray guide. 3. Selecting [OK] on the printer will start printing.

OK

▶▶▶ Note

- The displayed screen varies depending on your model.

Related Topic

- Item Edit Screen

Creating and Printing Items

You can easily create personalized items using your favorite photos and print them.

Select an image or images in the **Calendar** view, **Event** view, **People** view, **Unregistered People** view, or folder view, then click **New Art** at the bottom of the screen to select the item you want to create.

▶▶ Note

- You can also insert images by selecting the type and design of your item from the **Create or Open Items** view.

You can create and print items such as the following.

Printing Photos in a Variety of Layouts

You can print your favorite photos with dates or in a variety of layouts.



Printing Collages

You can create collages using your favorite photos and print them.



Printing Cards

You can create cards for anniversaries and annual events using your favorite photos and print them.



Printing Calendars

You can create personalized calendars using your memorable photos and print them.



Printing Stickers

You can create personalized stickers by printing your favorite photos on sticker sheets.



Printing in a Cinematic Layout

You can print your favorite photos in a layout that resembles a film or theater.



Printing Paper Crafts

You can print downloaded PREMIUM Contents (paper crafts) and create three-dimensional art.

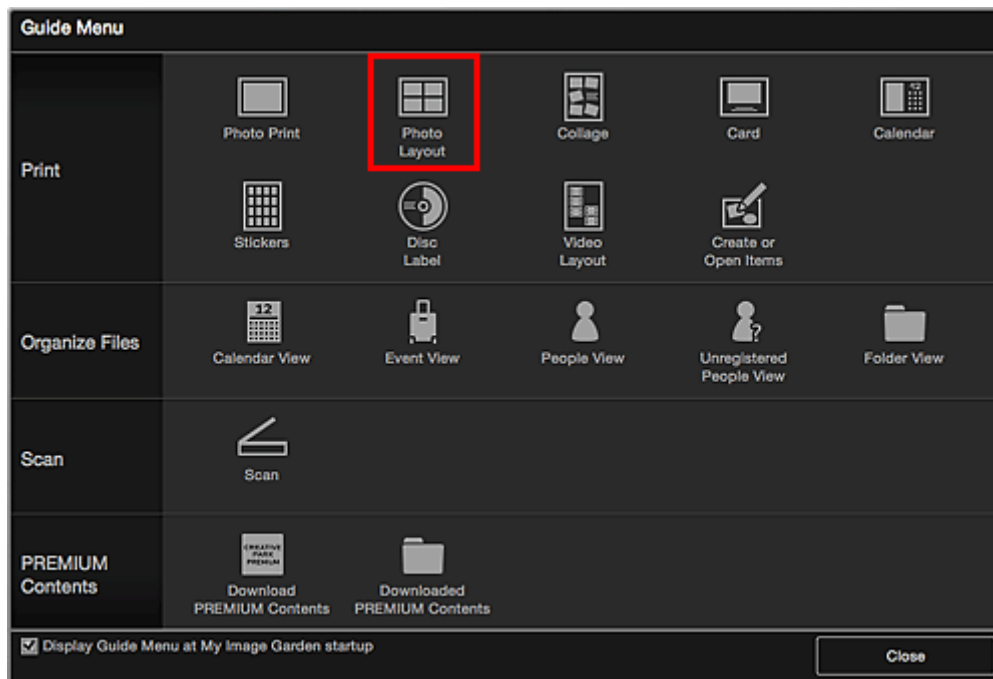


Printing Photos in a Variety of Layouts

You can print your favorite photos with dates or in a variety of layouts.

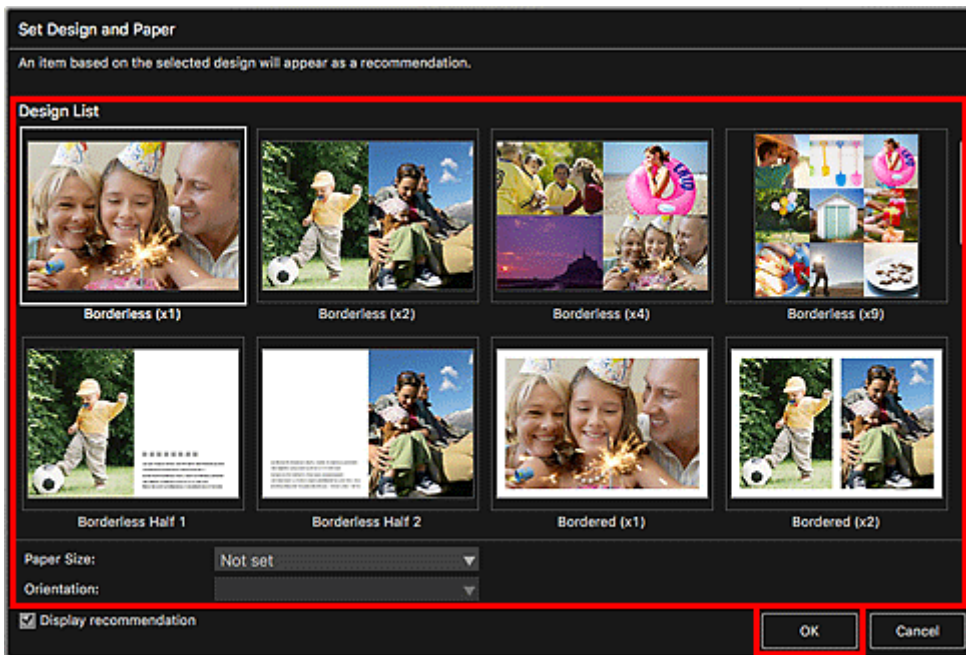


1. [Start My Image Garden.](#)
2. Click **Photo Layout** from the **Guide Menu** screen.



The **Set Design and Paper** dialog appears.

3. Specify settings such as design and **Paper Size**, and then click **OK**.



The selected design appears in the Item edit screen.

▶▶▶ Note

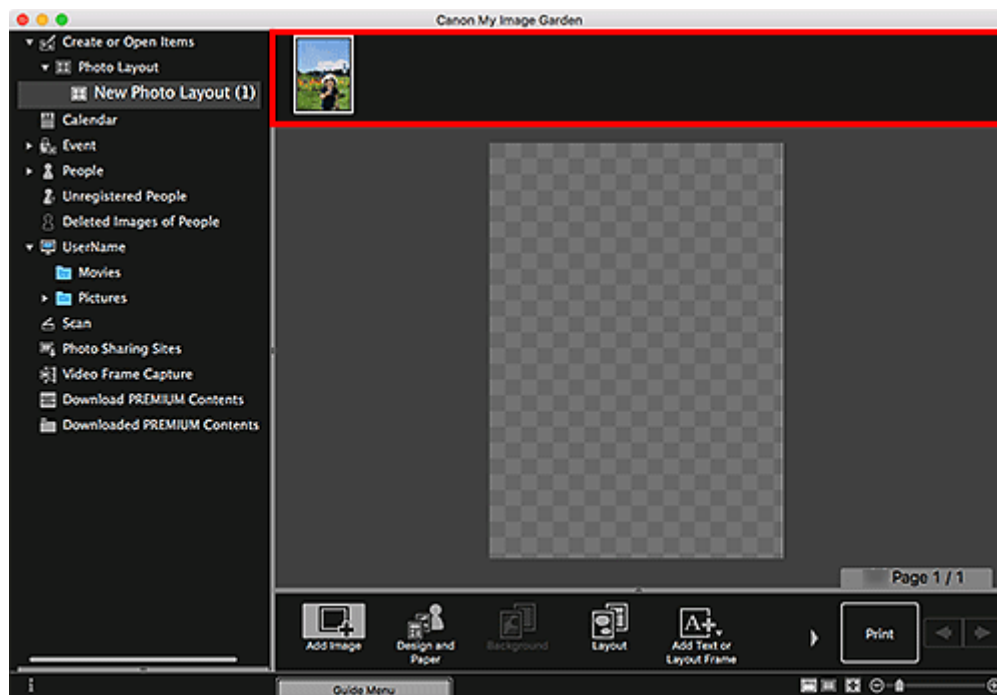
- The layout may not be as expected depending on the photo information or analysis results of the selected images.

4. Select the image(s) you want to print from **Add Image**.

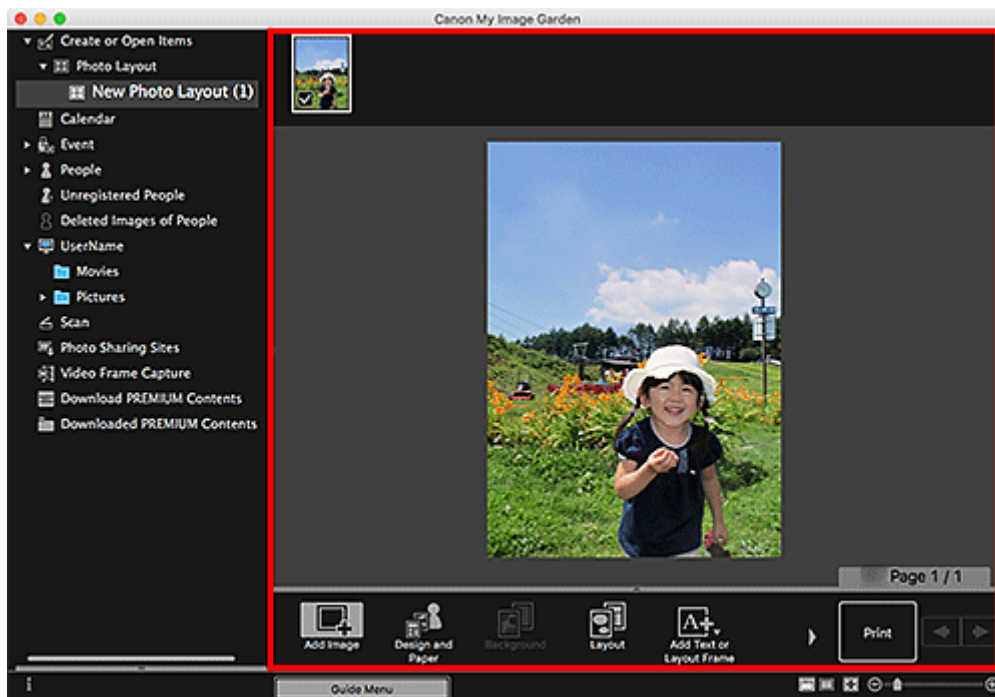
The image(s) appear in the Materials area.

5. Drag image in Materials area, and then drop it to layout frame of item.

When you move an image to a layout frame, a cross icon appears on the image.



6. Edit item according to preference.

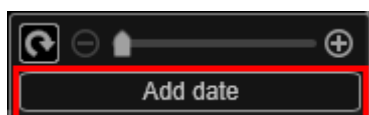


▶▶▶ Note


- In cases such as when **Identifying people** appears at **Unregistered People** in Global Menu on the left side of the screen, the result may not be as expected since automatic placement does not apply to images for which analysis has not been completed.
- To swap automatically placed images, see Inserting Images.

7. Add the date according to your preference.

Select the image to which you want to add the date to display the image editing tool. Click **Add date** to place a checkmark; the date is added to the image.



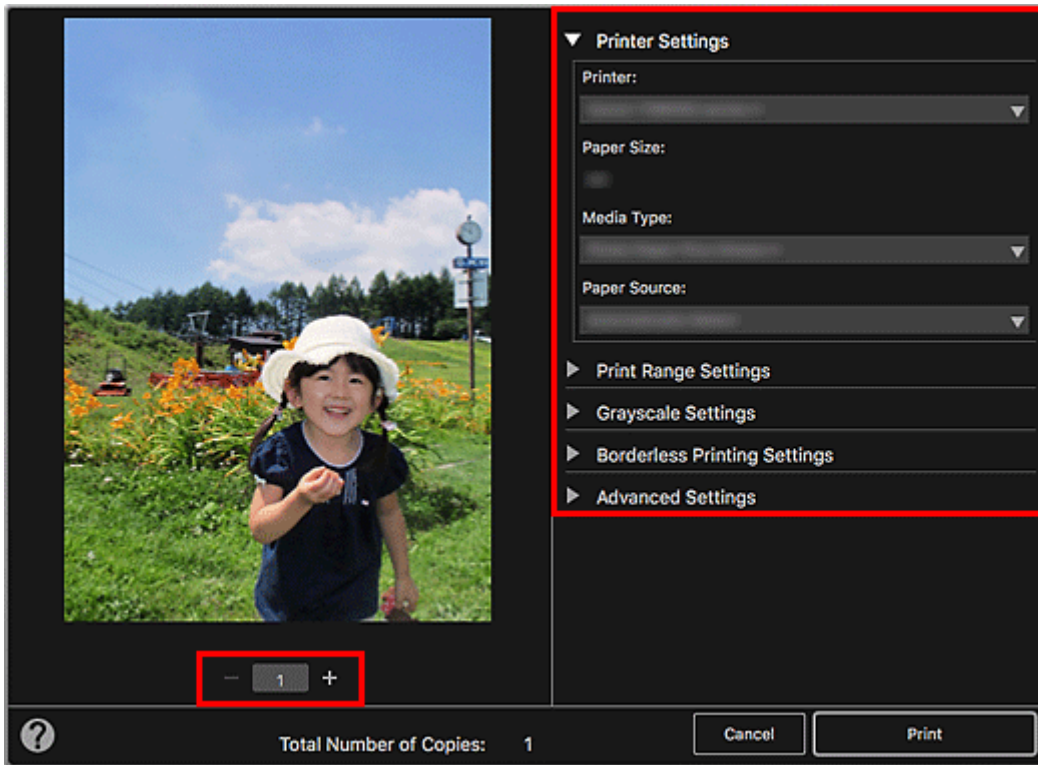
▶▶▶ Note

- In the **Advanced Settings** dialog displayed by clicking **Advanced...** at the bottom of the screen, you can make advanced settings to the text of the date to be printed or set to print dates on all images. When using an ID photo design, you can also add the same image to all frames within the page or apply the angle and size set to an image to all copies of the same image within the page. If **Advanced...** is not displayed, click  (Right Scroll).

8. Click **Print** at bottom right of screen.

The Print Settings dialog appears.

9. Specify number of copies to print, printer and paper to use, and other settings.



▶▶▶ Note

- For details on the Print Settings dialog, see Print Settings Dialog.

10. Click **Print**.

A message appears.

11. Click **OK**.

The Print dialog appears.

▶▶▶ Important

- If you change the printer in the Print dialog, a message appears and printing will be canceled.

12. Click **Print**.

Related Topic

- Item Edit Screen

Using Various Functions

▶ Scanning Photos and Documents

- Easy Scanning with Auto Scan
- Scanning Photos
- Scanning Documents

▶ Editing Items

- Setting the Design and Main People
- Inserting Images

▶ Correcting/Enhancing Photos

▶ Cropping Photos

▶ Creating/Editing PDF Files

▶ Extracting Text from Images (OCR Function)

Scanning Photos and Documents

Use My Image Garden to scan photos, documents, and other items easily.

- [Easy Scanning with Auto Scan](#)
- [Scanning Photos](#)
- [Scanning Documents](#)
- Scanning with Favorite Settings
- Cropping Scanned Images

▶▶ Note

- Use the **Stitch** function from the **Scan** view to scan the left and right halves of an item larger than the platen and combine the scanned images back into one image. For more details, click Home to return to the top page of the Online Manual for your model and search for "Scanning Items Larger than the Platen (Image Stitch)."
- Click **Driver** in the **Scan** view to start the scanner driver and scan by specifying the output size, image corrections, and other settings.

Easy Scanning with Auto Scan

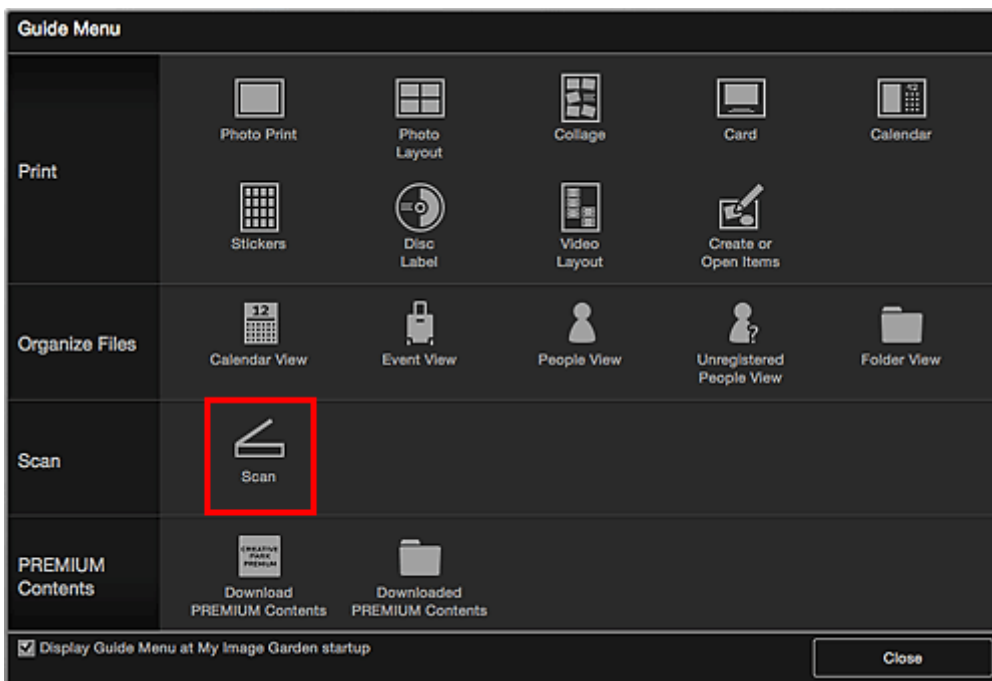
You can scan easily by automatically detecting the item type.

1. Make sure that your scanner or printer is turned on.
2. Place the item on the platen or ADF (Auto Document Feeder) of your scanner or printer.

▶▶▶ Note

- For how to place items, click Home to return to the top page of the Online Manual for your model and search for "Placing Items (When Scanning from a Computer)."

3. [Start My Image Garden.](#)
4. Click **Scan** from the **Guide Menu** screen.

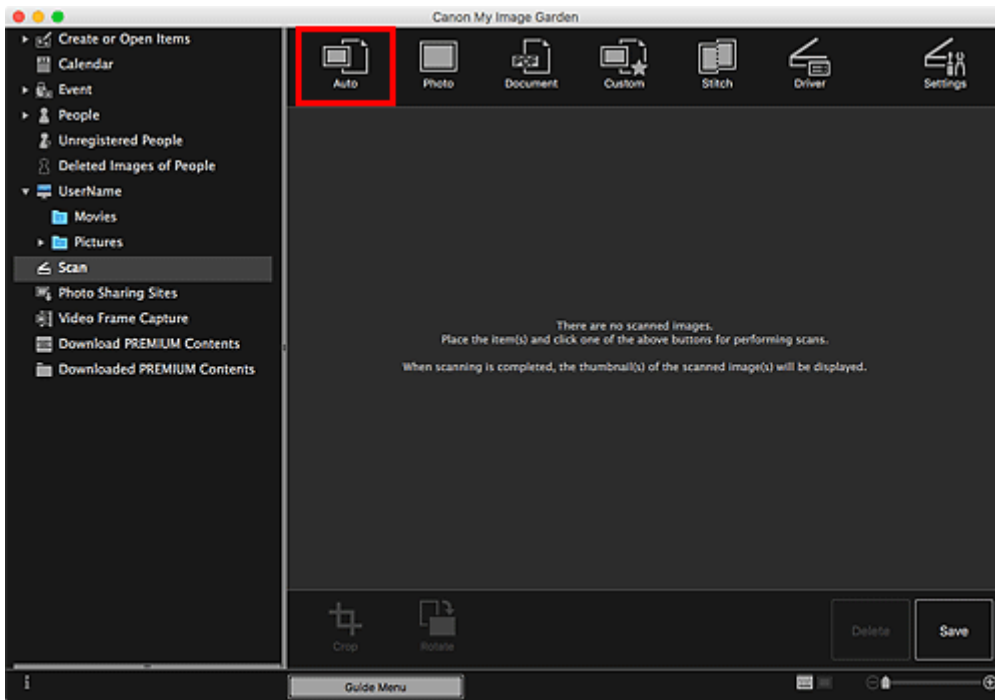


The view switches to **Scan**.

▶▶▶ Note

- Clicking **Scan** from the Global Menu in the Main Screen also switches the view to **Scan**.

5. Click **Auto**.

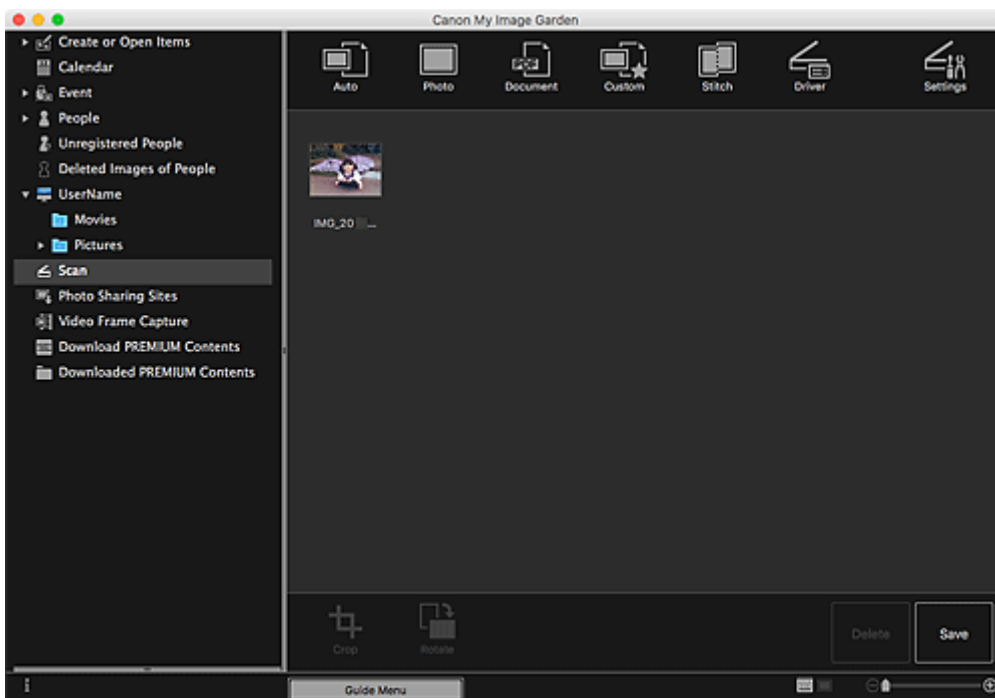


Scanning starts.

▶▶▶ Note

- To specify the scan settings, click Home to return to the top page of the Online Manual for your model and search for "Settings (Auto Scan) Dialog."
- Click **Cancel** to cancel the scan.

When scanning is completed, the image appears as a thumbnail.



▶▶▶ Note

- You can rotate the selected image 90 degrees clockwise each time you click **Rotate**.

- You can crop images.
 - Cropping Scanned Images
- Click **Save** to save rotated or cropped scanned images.
 - **Save Dialog (Scan View)**
- You can set the save location for scanned images on the **Advanced Settings** tab of the **Preferences** dialog displayed by selecting **Preferences...** from the **My Image Garden** menu. Refer to "**Advanced Settings Tab**" for details on the setting procedure.

▶▶ Note

- You can also print scanned images. Control-click a thumbnail and select **Print...** from the displayed menu to display the Print Settings dialog. Select the printer and paper to use, then click **Print**.

Related Topic

- Scan View

Scanning Photos

You can scan with settings suitable for photos.

▶▶▶ Note

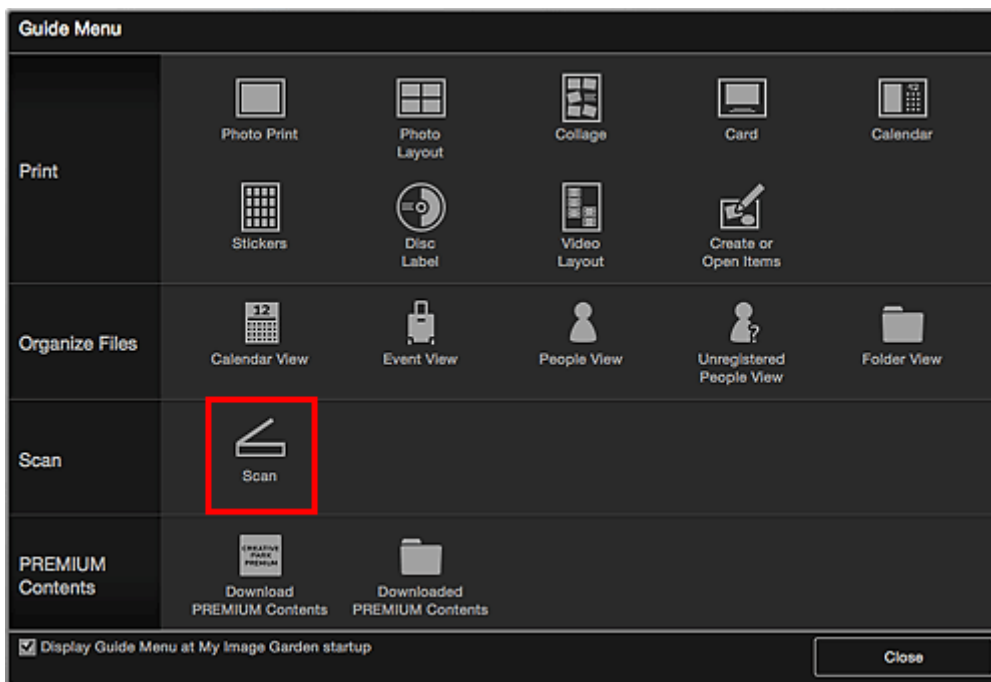
- You can even scan two or more photos (small items) at one time. For more details, click Home to return to the top page of the Online Manual for your model and search for "Scanning Multiple Items at One Time."

1. Place the item on the platen.

▶▶▶ Note

- For how to place items, click Home to return to the top page of the Online Manual for your model and search for "Placing Items (When Scanning from a Computer)."

2. [Start My Image Garden.](#)
3. Click **Scan** from the **Guide Menu** screen.

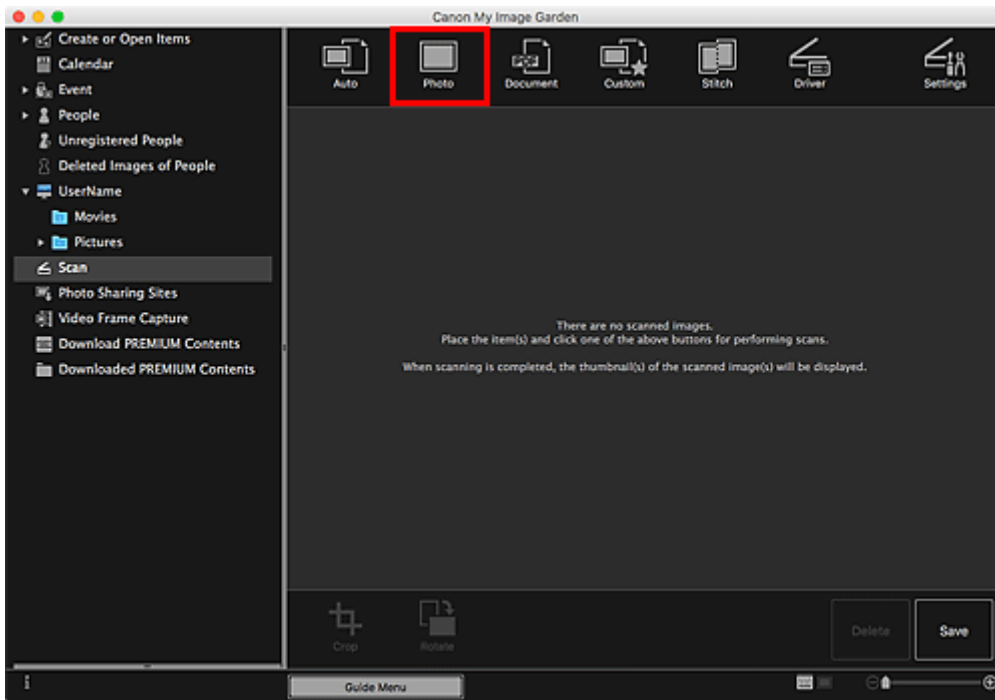


The view switches to **Scan**.

▶▶▶ Note

- Clicking **Scan** from the Global Menu in the Main Screen also switches the view to **Scan**.

4. Click **Photo**.

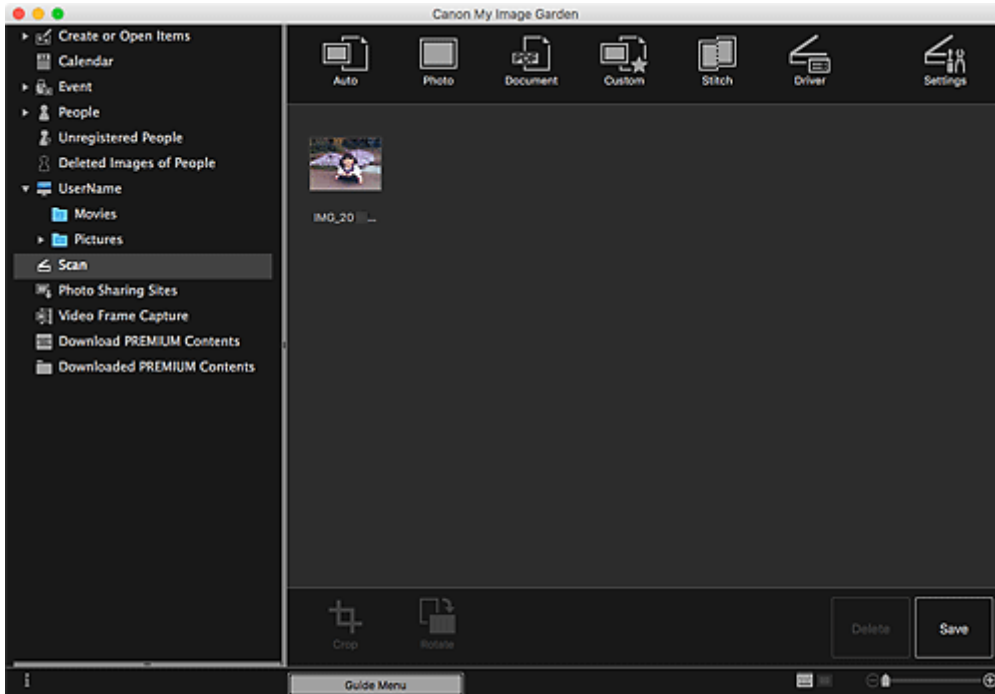


Scanning starts.

▶▶▶ Note

- Click **Cancel** to cancel the scan.

When scanning is completed, the image appears as a thumbnail.



▶▶▶ Note

- You can rotate the selected image 90 degrees clockwise each time you click **Rotate**.
- You can crop images.

■ Cropping Scanned Images

- Click **Save** to save rotated or cropped scanned images.

■ Save Dialog (**Scan View**)

- You can set the save location for scanned images on the **Advanced Settings** tab of the **Preferences** dialog displayed by selecting **Preferences...** from the **My Image Garden** menu. Refer to "**Advanced Settings Tab**" for details on the setting procedure.

▶▶ Note

- You can also print scanned images. Control-click a thumbnail and select **Print...** from the displayed menu to display the Print Settings dialog. Select the printer and paper to use, then click **Print**.

Related Topic

- **Scan View**

Scanning Documents

You can scan with settings suitable for documents.

▶▶▶ Note

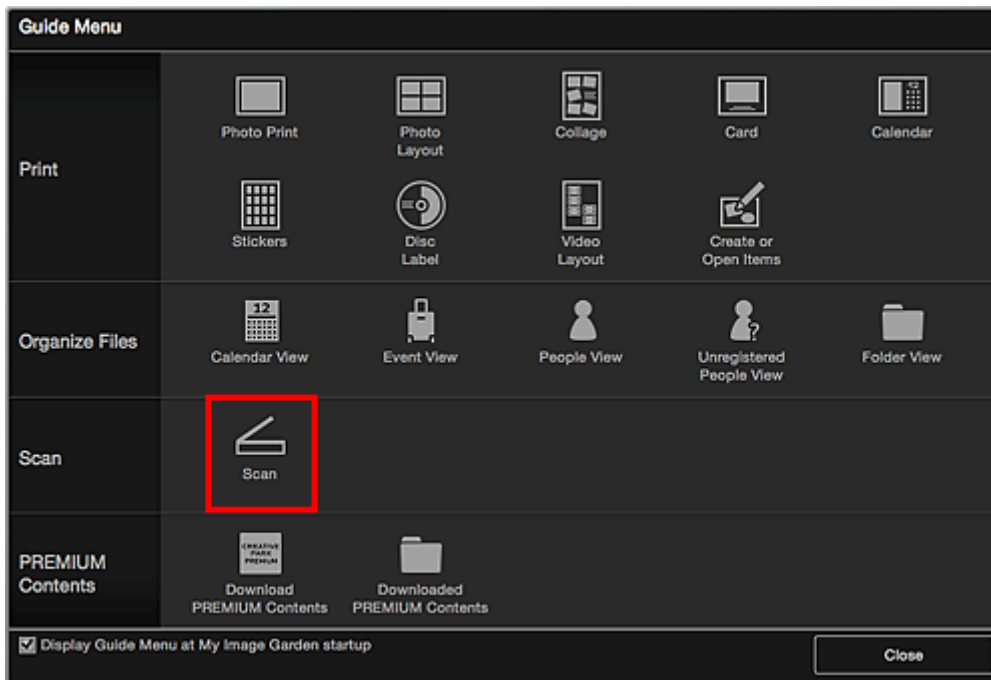
- You can even scan two or more small items at one time. For more details, click Home to return to the top page of the Online Manual for your model and search for "Scanning Multiple Items at One Time."

1. Place the item on the platen or ADF (Auto Document Feeder).

▶▶▶ Note

- For how to place items, click Home to return to the top page of the Online Manual for your model and search for "Placing Items (When Scanning from a Computer)."

2. [Start My Image Garden.](#)
3. Click **Scan** from the **Guide Menu** screen.

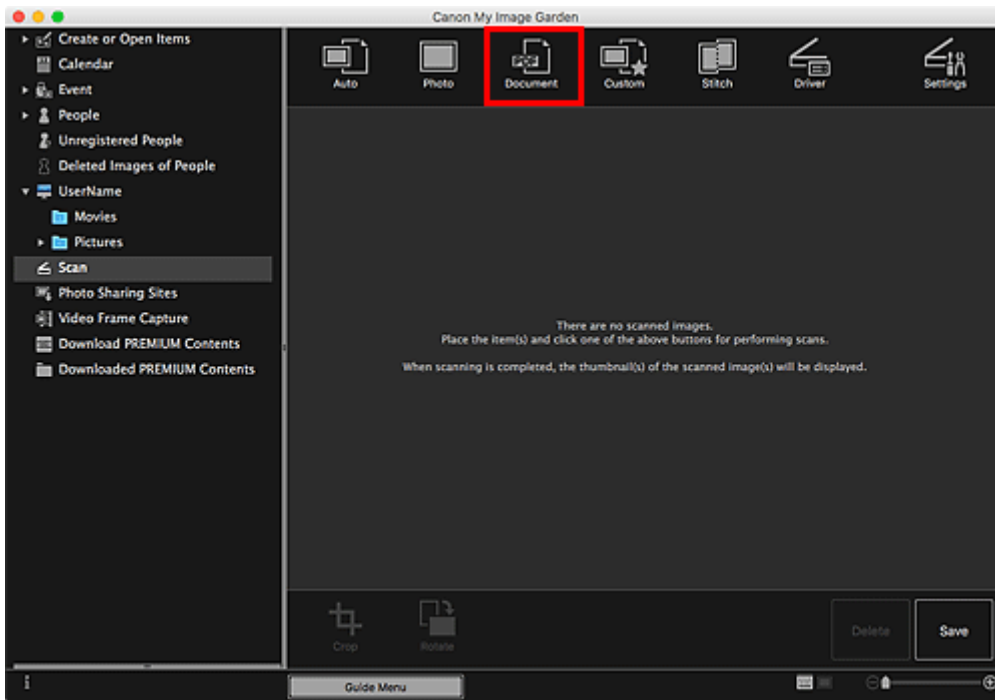


The view switches to **Scan**.

▶▶▶ Note

- Clicking **Scan** from the Global Menu in the Main Screen also switches the view to **Scan**.

4. Click **Document**.

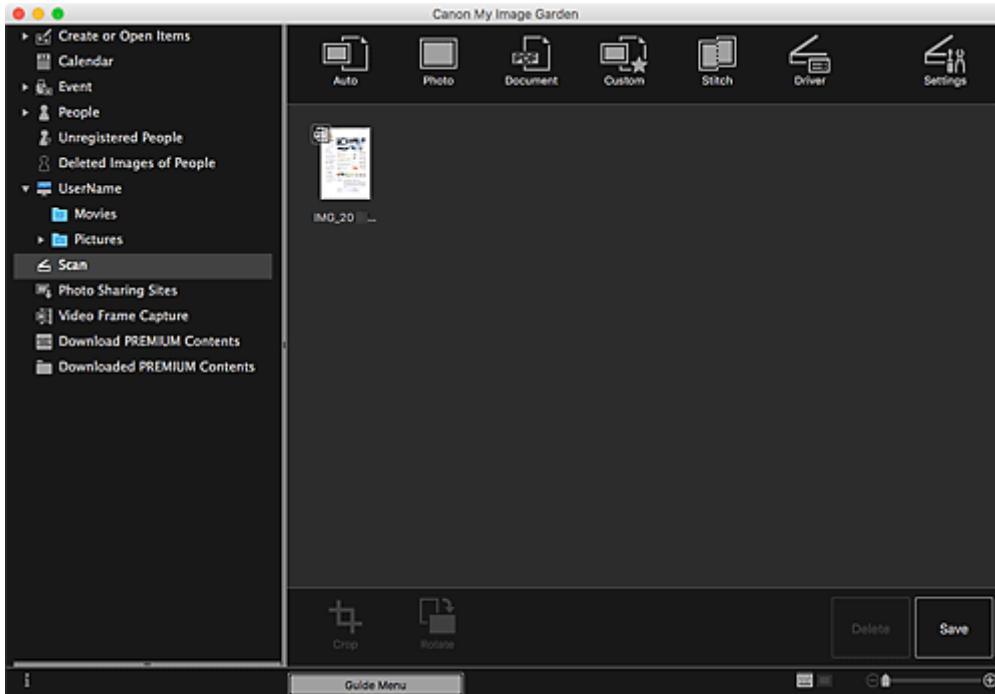


Scanning starts.

▶▶▶ **Note**

- Click **Cancel** to cancel the scan.

When scanning is completed, the image appears as a thumbnail.



▶▶▶ **Note**

- Click **Save** to save scanned images.

■ **Save Dialog (Scan View)**

- You can set the save location for scanned images on the **Advanced Settings** tab of the **Preferences** dialog displayed by selecting **Preferences...** from the **My Image Garden** menu. Refer to "**Advanced Settings** Tab" for details on the setting procedure.

»» Note

- You can also print scanned images. Control-click a thumbnail and select **Print...** from the displayed menu to display the Print Settings dialog. Select the printer and paper to use, then click **Print**.

Related Topic

- [Scan View](#)

Correcting/Enhancing Photos

You can correct red eyes or adjust the brightness and contrast of images.

Select an image or images in the Edit area of the Item edit screen, the **Calendar** view set to **Day View**, the expanded display of the **Event** view, the expanded display of the **People** view, the **Unregistered People** view, or folder view, then click **Correct/Enhance** at the bottom of the screen to display the **Correct/Enhance Images** window. You can make the following corrections and enhancements in the **Correct/Enhance Images** window.

▶▶ Important

- This function is not available when a PDF file is selected.
- Correction/enhancement may not be possible due to insufficient memory depending on the size of the selected image.

Auto Photo Fix

You can automatically apply corrections suitable for photos based on the analysis of the shot scene.

■ Using Auto Photo Fix



Red-Eye Correction

You can reduce red eye caused by a camera flash.

■ Using Red-Eye Correction



Face Brightener

You can brighten dark faces caused by bright background.

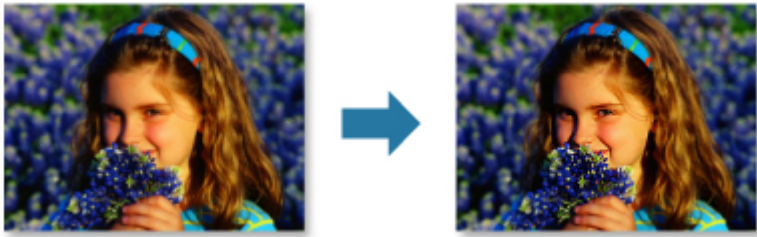
■ Using Face Brightener



Face Sharpener

You can sharpen out-of-focus faces.

■ Using Face Sharpener



Digital Face Smoothing

You can enhance skin beautifully by reducing blemishes and wrinkles.

■ Using Digital Face Smoothing



Blemish Remover

You can reduce moles.

■ Using Blemish Remover



Image Adjustment

You can adjust brightness and contrast, sharpen the entire image, etc.

You can also blur the outline of the subjects or remove the base color.

■ Adjusting Images



Crop

You can select the area you want to keep in an image and discard the rest.

■ [Cropping Photos](#)

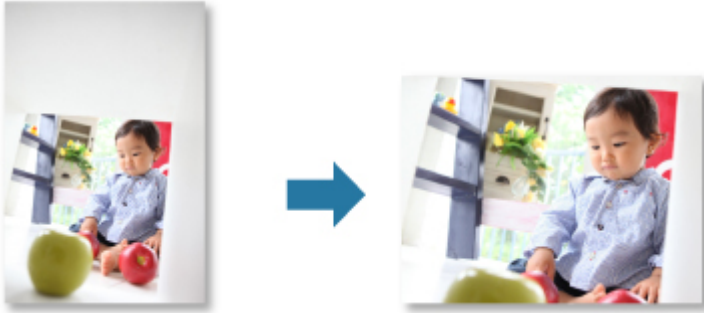


Related Topic

■ [Correct/Enhance Images Window](#)

Cropping Photos

Cropping is the act of selecting the area you want to keep in an image and discarding the rest.

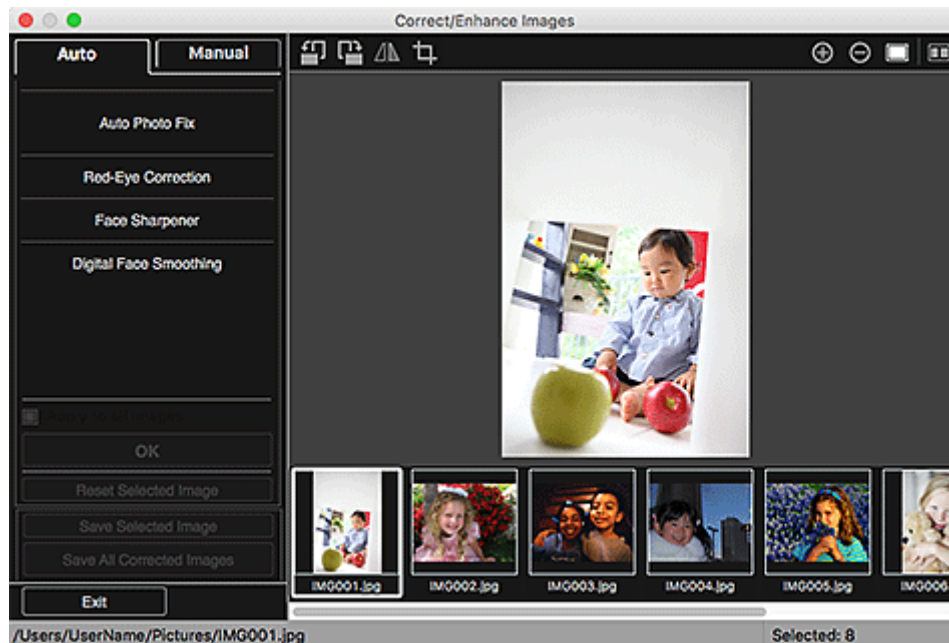


»» Important

- This function may not be available when PREMIUM Contents are used.
- Images cannot be cropped while editing items.

1. [Select the image\(s\)](#) you want to crop.
2. Click **Correct/Enhance** at the bottom of the screen.

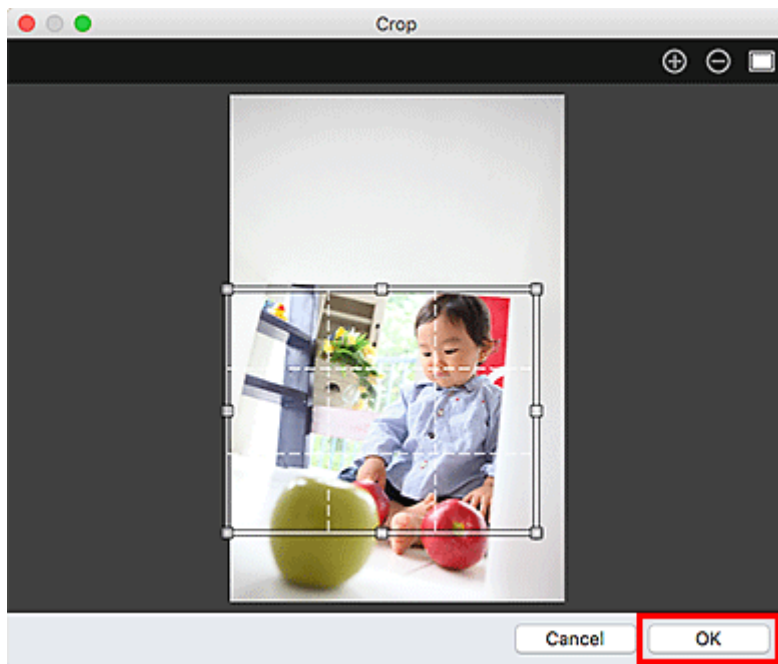
The **Correct/Enhance Images** window appears.



3. Click  (Crop).

The **Crop** window appears.

4. Drag the white squares on the image to specify the area to be cropped, then click **OK**.



▶▶▶ **Note**

- Click **Reset Selected Image** in the **Correct/Enhance Images** window to undo all enhancements.

Related Topic

- **Crop Window**

Creating/Editing PDF Files

You can create PDF files from images saved on a computer. You can also add pages to or delete pages from the created PDF files and rearrange pages.

▶▶▶ Important

- You can create or edit up to 99 pages of a PDF file at one time.
- For PDF files, only those created in My Image Garden or IJ Scan Utility/IJ Scan Utility Lite are supported. PDF files created or edited in other applications are not supported.

▶▶▶ Note

- File formats that can be selected are PDF, JPEG, TIFF, and PNG.

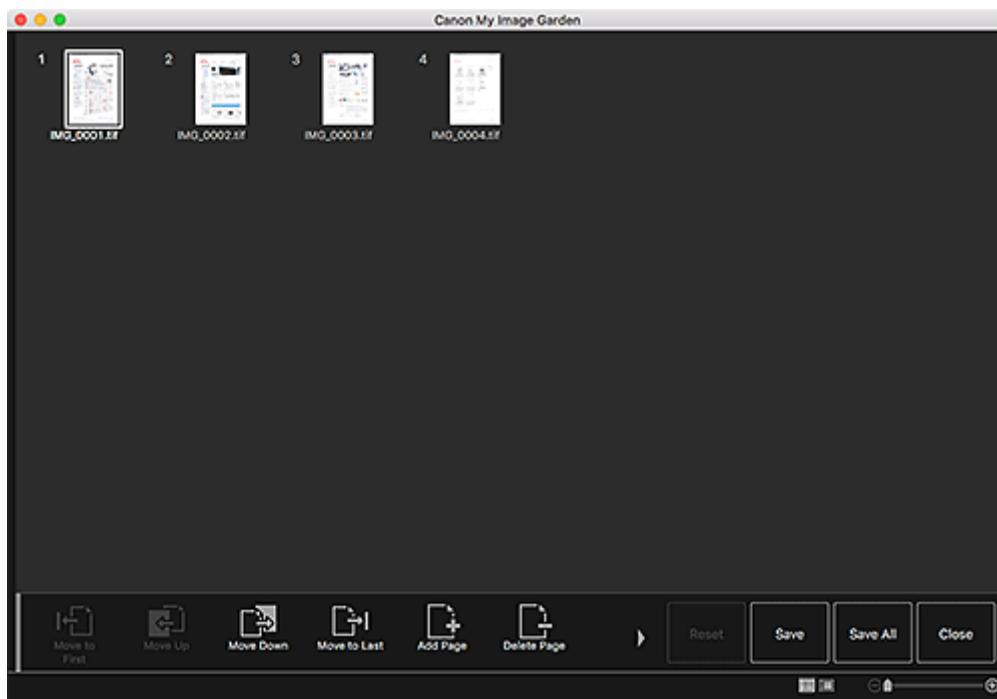
1. [Select the image\(s\) from which you want to create \(a\) PDF file\(s\), or the PDF file\(s\) you want to edit.](#)

▶▶▶ Important

- You cannot use images whose number of pixels in the vertical or horizontal direction is 10501 or more.

2. Click **Create/Edit PDF File** at the bottom of the screen.

The view switches to **Create/Edit PDF File**.



3. Add or delete pages as required.

When adding existing images or PDF files:

Click **Add Page** at the bottom of the screen. After the **Open** dialog appears, select the image(s) or PDF file(s) you want to add, then click **Open**.

When deleting pages:

Select the image(s), then click **Delete Page** at the bottom of the screen.

4. Change the page order as required.

You can change the page order by clicking a page then using **Move to First**, **Move Up**, **Move Down**, or **Move to Last** at the bottom left of the screen.

You can also change the page order by dragging and dropping a page to the target location.

5. Click **Save** or **Save All**.

When saving only the selected page(s):

Click **Save** to display the **Save** dialog.

When saving all pages:

Click **Save All** to display the **Save** dialog.

6. Specify the save settings.

■ **Save Dialog (Create/Edit PDF File View)**

7. Click **Save**.

The PDF file(s) is (are) saved, and the **Create/Edit PDF File** view reappears.

8. Click **Close**.

The **Create/Edit PDF File** view closes.

The  (PDF) mark appears on the upper left of the thumbnails of saved PDF files.

Related Topic

■ **Create/Edit PDF File View**

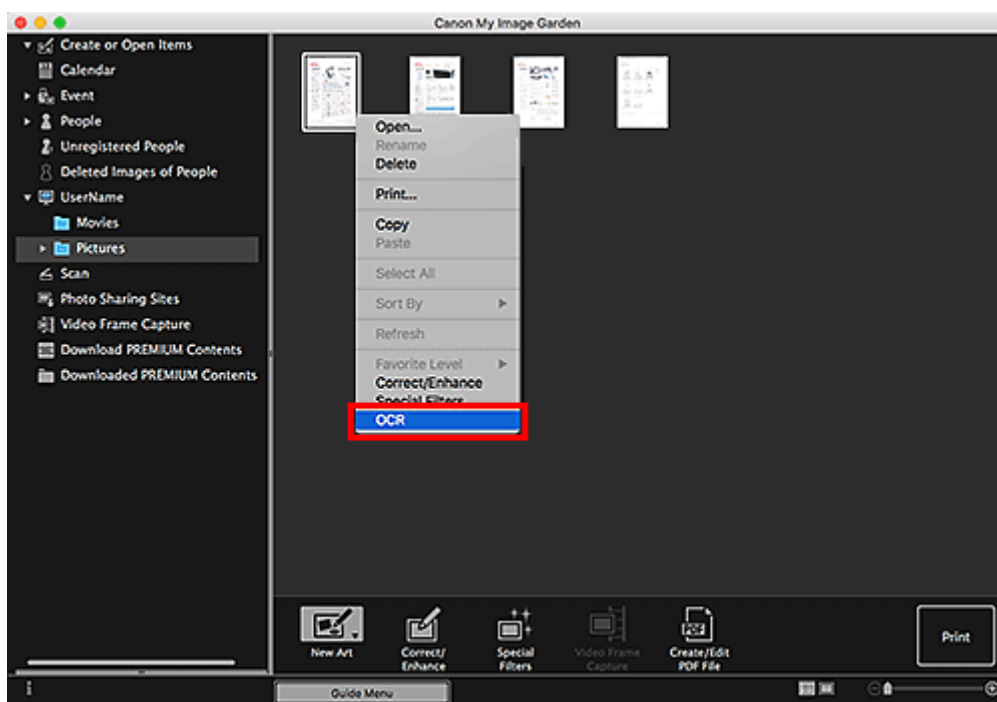
Extracting Text from Images (OCR Function)

Scan text in images and display it in TextEdit (included with Mac OS).

►►► Important

- PDF files cannot be converted to text.
- Text conversion may not be possible depending on the size of the selected image.

1. [Display the image](#) you want to convert into text.
2. Control-click the image you want to convert into text, then click **OCR** from the displayed menu.



TextEdit (included with Mac OS) starts and editable text appears.

►►► Note

- Only text written in languages that can be selected in the **Advanced Settings** tab of the **Preferences** dialog can be extracted to TextEdit (included with Mac OS). Click **Settings...** on the **Advanced Settings** tab and specify the language according to the language of the document to be scanned.
When scanning multiple documents, you can collect the extracted text into one file.
- Text displayed in TextEdit (included with Mac OS) is for guidance only. Text in the image of the following types of documents may not be detected correctly.
 - Documents containing text with font size outside the range of 8 points to 40 points (at 300 dpi)
 - Slanted documents
 - Documents placed upside down or documents with text in the wrong orientation (rotated characters)
 - Documents containing special fonts, effects, italics, or hand-written text
 - Documents with narrow line spacing

- Documents with colors in the background of text
 - Documents containing multiple languages
-

Troubleshooting

- ▶ **Target Printer Does Not Appear**
- ▶ **When Having Trouble Using Functions or When Changing Settings**

Target Printer Does Not Appear

If your printer does not appear in **Printer** of the Print Settings dialog, the printer may not be registered correctly.

See Making Settings According to Printer Status to check the status of the printer, and then make settings accordingly so that you can print or scan from your printer.

When Having Trouble Using Functions or When Changing Settings

- [How Can I Change the Settings of My Image Garden?](#)
- [Cannot Set Correct Paper Size in Disc Label Printing](#)
- [Images Do Not Appear](#)
- [Image Analysis \(Face Identification\) Fails](#)
- [Cannot Scan Properly](#)
- [Cannot Use PREMIUM Contents](#)

How Can I Change the Settings of My Image Garden?

You can change the settings of My Image Garden in the **Preferences** dialog.

Cannot Set Correct Paper Size in Disc Label Printing

If **120 x 120 mm** cannot be set for **Paper Size** in the Print dialog, check the status of the **Print/scan using AirPrint** checkbox in the Preferences dialog.

If the checkbox is selected, deselect it and try printing the item again. If your printer cannot be selected after deselecting the checkbox, see Making Settings According to Printer Status, and then make sure the printer is registered correctly.

Images Do Not Appear

Image analysis is performed immediately after installation. Therefore, images may not appear in the **Calendar** view or **Unregistered People** view until the image analysis is completed.

▶▶▶ Note

- **Identifying people** appears at **Unregistered People** in Global Menu on the left side of the screen during image analysis.

To display images in the **Calendar** view, **Unregistered People** view or **People** view, or to use the item recommendation function, the folders in which the images are saved need to be subject to image analysis. Make sure that the folders in which the images are saved are subject to image analysis on the **Image Analysis Settings** tab of the **Preferences** dialog.

Image Analysis (Face Identification) Fails

Adjust the face identification rate and other settings on the **Image Analysis Settings** tab of the **Preferences** dialog.

Cannot Scan Properly

For more details, click Home to return to the top page of the Online Manual for your model and search for "Problems with Scanning."

Cannot Use PREMIUM Contents

Refer to "Cannot Use PREMIUM Contents" for details.

Depending on your model, you cannot download PREMIUM Contents from My Image Garden. Refer to "List of Models Supporting CREATIVE PARK PREMIUM" for details.

My Image Garden Guide(AirPrint)

What Is My Image Garden?

▶ **My Image Garden Features**

- To Utilize Images Imported to the Computer
- Selecting Images, PDF Files, and Videos

▶ **Starting My Image Garden**

My Image Garden Features

My Image Garden is an application for utilizing photos taken with digital cameras and other images saved on your computer.

Features at Glance

- [Getting Layout Suggestions from My Image Garden](#)
- [Automatically Organize Photos](#)
- [Print Photos and Documents](#)
- [Print Personalized Items](#)
- [Print Disc Labels \(CD/DVD/BD\)](#)
- [Capture and Print Still Images from Videos](#)
- [Scan Photos and Documents](#)
- [Correct/Enhance Photos](#)

►► Note

- File formats available in My Image Garden vary by function. For details, see File Formats.
- If you are using OS X Mountain Lion v10.8.5, change Mac OS settings as needed beforehand to utilize images imported from a digital camera, picture CD, and other media quickly in My Image Garden. For details, see To Utilize Images Imported to the Computer.

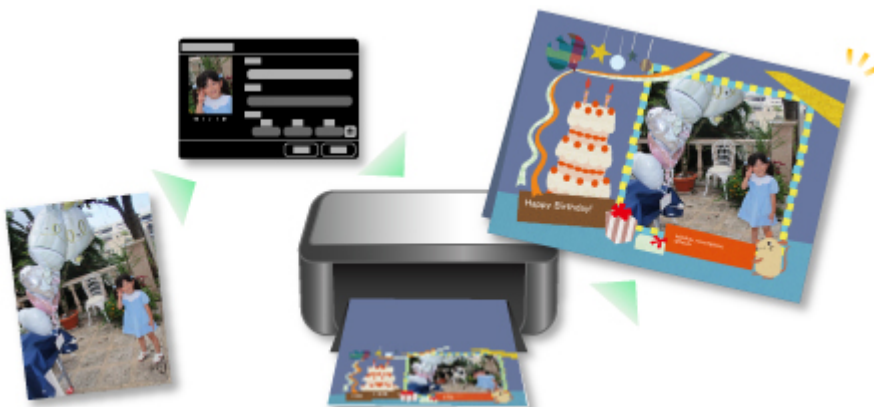
Getting Layout Suggestions from My Image Garden

My Image Garden employs a technology called "Image Assorting Technology" that provides the following functions.

- An image analysis function to group images by person by detecting faces in photos, and to register images and videos to a calendar automatically based on the shooting date and time.
- An item recommendation function that automatically recommends layouts for analyzed images.

This technology makes it easy to create and print various items such as collages and cards.

- Utilizing the Item Recommendation Function

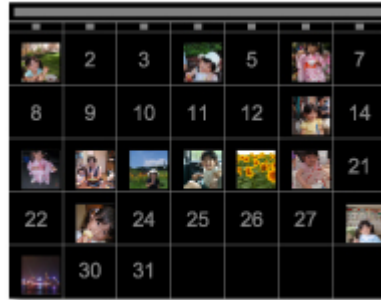


Automatically Organize Photos

Images analyzed in My Image Garden appear in the **Unregistered People** view or grouped by person in the **People** view. They also appear in the **Calendar** view based on the shooting date and time. Register

people's profiles or event information to organize a large number of images or to search quickly for the images you want.

- Registering People
- Registering Events



Print Photos and Documents

Preview your favorite photos easily before you print. Documents saved as PDF files can also be printed.

- [Printing Photos and Documents](#)



Print Personalized Items

Combine your favorite photos with preset templates to create and print personalized items such as collages and cards.

- [Creating and Printing Items](#)



Print Disc Labels (CD/DVD/BD)

Create and print personalized disc labels (CD/DVD/BD) from your favorite photos.

■ [Printing Disc Labels \(CD/DVD/BD\)](#)



Capture and Print Still Images from Videos

Select your favorite scenes from videos and print them as still images.

■ Capturing and Printing Still Images from Videos



Scan Photos and Documents

Scan photos and documents easily.

■ [Scanning Photos and Documents](#)



Correct/Enhance Photos

Correct red eye or adjust the brightness and contrast of images.

■ Correcting/Enhancing Photos



▶▶ Note

- In My Image Garden, there are many methods for selecting images, PDF files, and videos. For details, see [Selecting Images, PDF Files, and Videos](#).

Printing

- ▶ **Printing Photos and Documents**
- ▶ **Printing Disc Labels (CD/DVD/BD)**
- ▶ **Creating and Printing Items**
 - **Printing Photos in a Variety of Layouts**

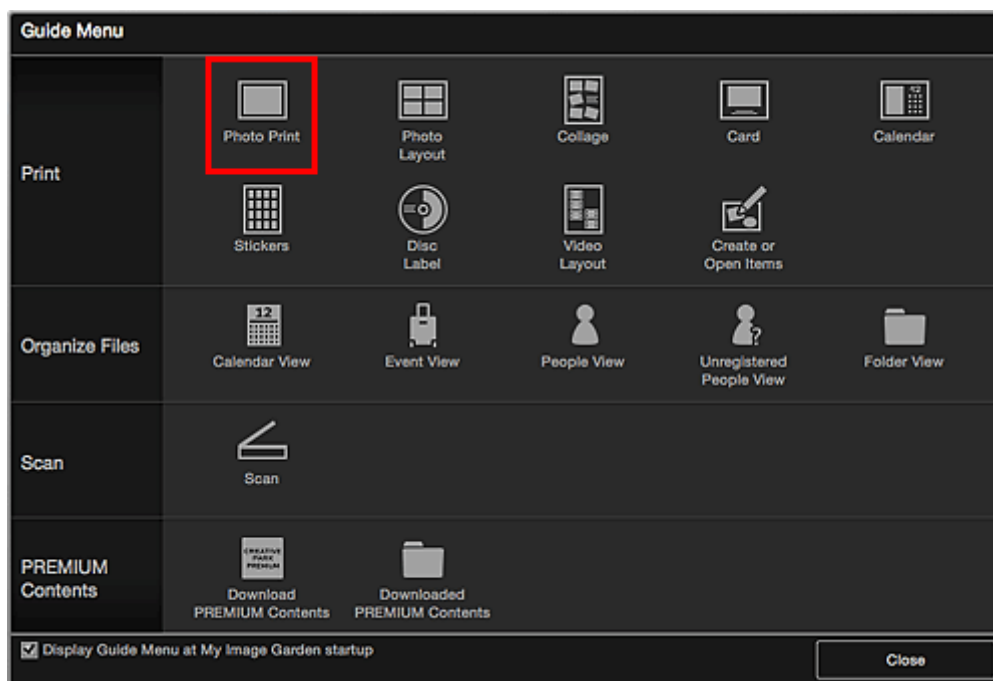
Printing Photos and Documents

Print your favorite photos easily.

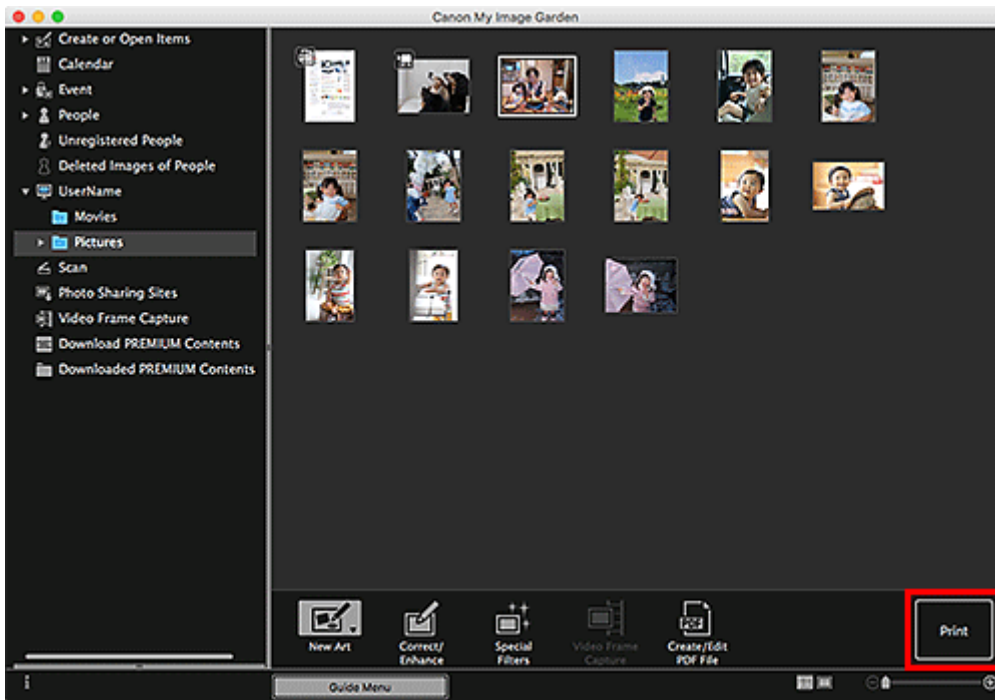
Documents (PDF files) created in My Image Garden can also be printed.



1. Make sure printer is turned on.
2. Start My Image Garden.
3. From **Guide Menu** screen, click **Photo Print**.



4. Select image(s) or PDF file(s) you want to print.
5. Click **Print**.



The print dialog appears.

▶▶▶ Note

- An example of printing from the folder view.

6. Set number of copies to print as needed.



▶▶▶ Note

- For details on the print dialog, see Print Dialog (Photos and Documents).

7. Load paper.

8. Click **Print**.

The Print dialog appears.

9. Specify printer and paper to use, and other settings.

»» Note

- For details on the Print dialog, see Help of Mac OS.

10. Click **Print**.

»» Important

- If you print a large number of high resolution images at one time, printing may pause halfway through.
- If you print in a bordered layout, the margins on the left and right or the top and bottom may become wider than the other.

»» Note

- Images can be corrected or enhanced before printing as needed.
 - Correcting/Enhancing Photos
 - Enhancing Photos Using Special Filters
- Colors may fade with time if the printed paper is left for a long period of time.
After printing, dry the paper sufficiently, and then store or display indoors at room temperature and normal humidity, avoiding high temperatures, high humidity, and direct sunlight.
To avoid direct exposure to air, we recommend that you store the paper in an album, plastic folder, photo frame, or other container.

Printing Disc Labels (CD/DVD/BD)

Create and print personalized disc labels (CD/DVD/BD) from your favorite photos.

▶▶▶ Note

- This function is available on supported models only. For details on the supported models, see [Printers that Require Registration with AirPrint](#).

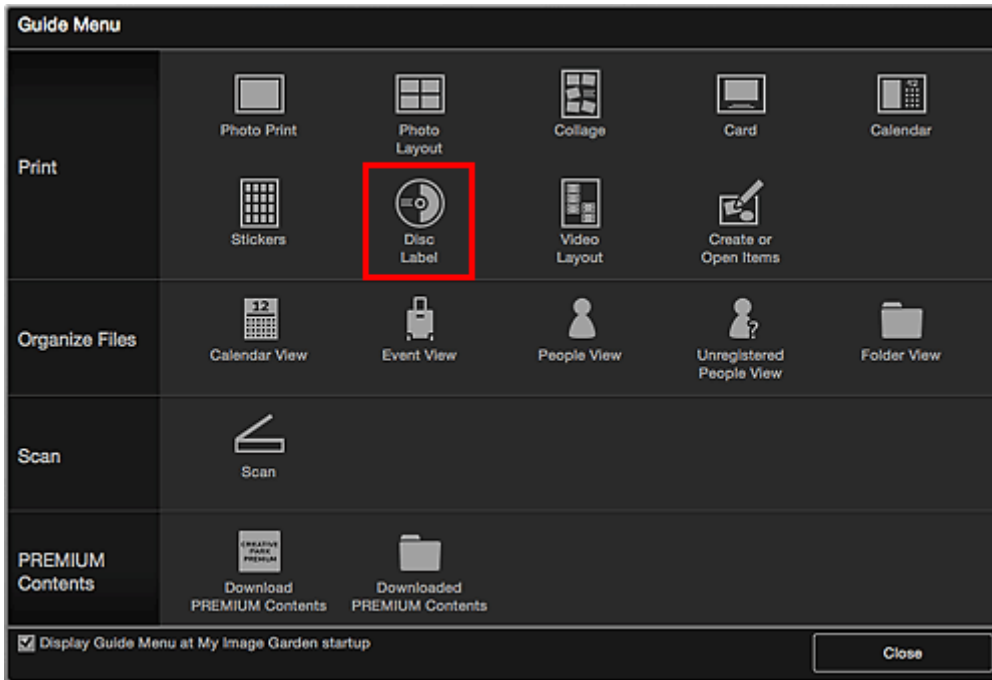
If your printer is not listed, see [Printing Disc Labels \(CD/DVD/BD\)](#).



▶▶▶ Important

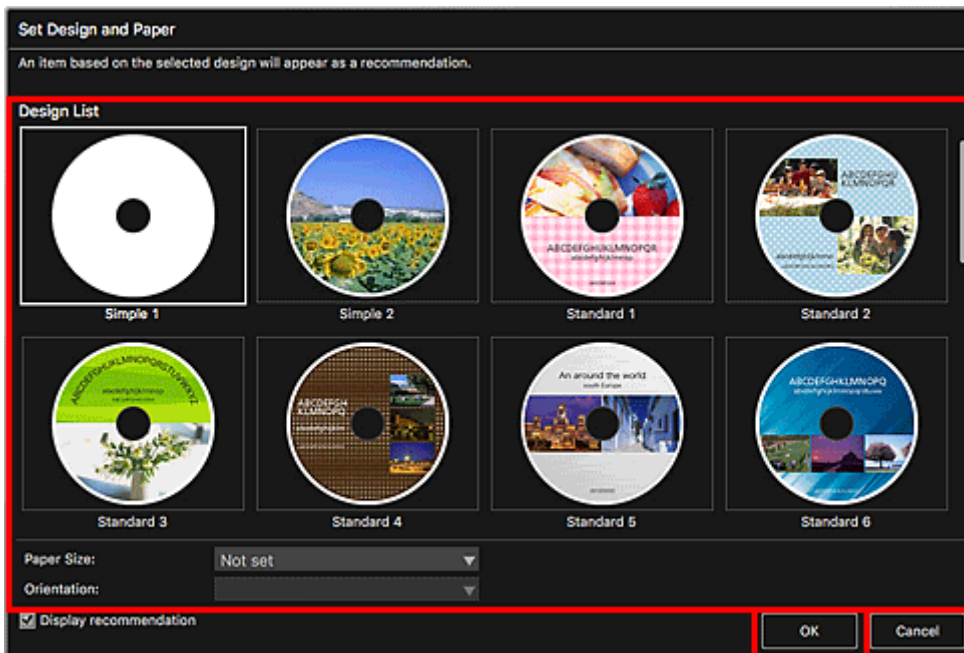
- Do not set the disc tray until a message prompting you to load a printable disc appears. Loading a printable disc while the printer is in operation may damage the printer.
- To set or remove the disc tray, click Home to return to the top page of the Online Manual for your model and search for "Placing a Printable Disc."

1. Start My Image Garden.
2. From **Guide Menu** screen, click **Disc Label**.



The **Set Design and Paper** dialog appears.

- Specify settings such as design and **Paper Size**, and then click **OK**.



The disc label (CD/DVD/BD) appears in the Item edit screen.

▶▶▶ Note

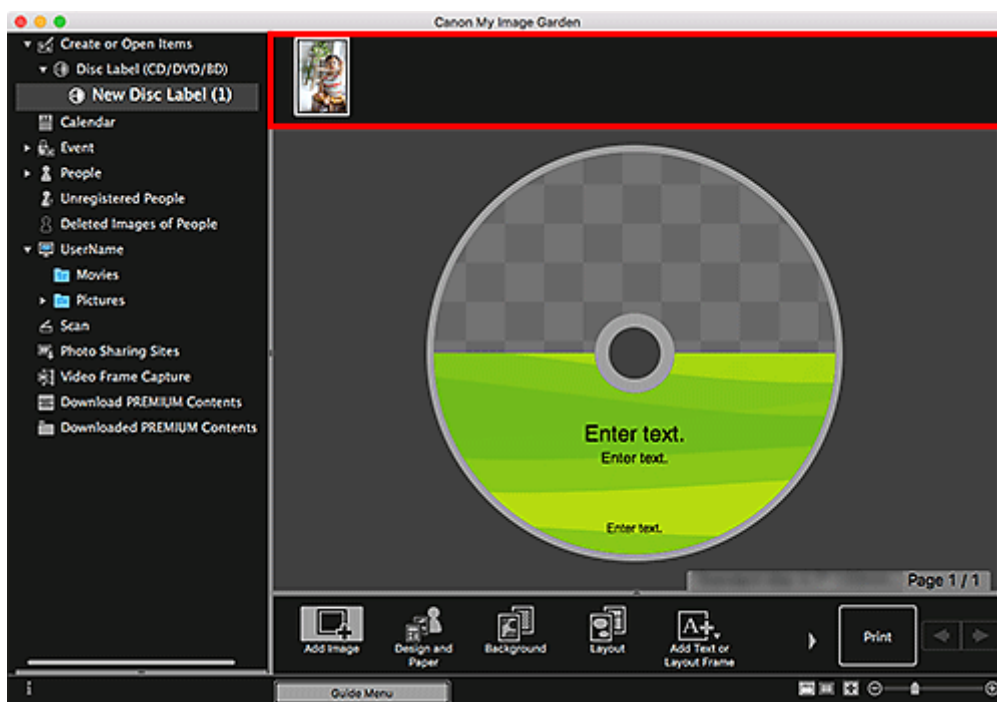
- The layout may not be as expected depending on the photo information or analysis results of the selected images.

- From **Add Image**, select image(s) you want to use for disc label (CD/DVD/BD).

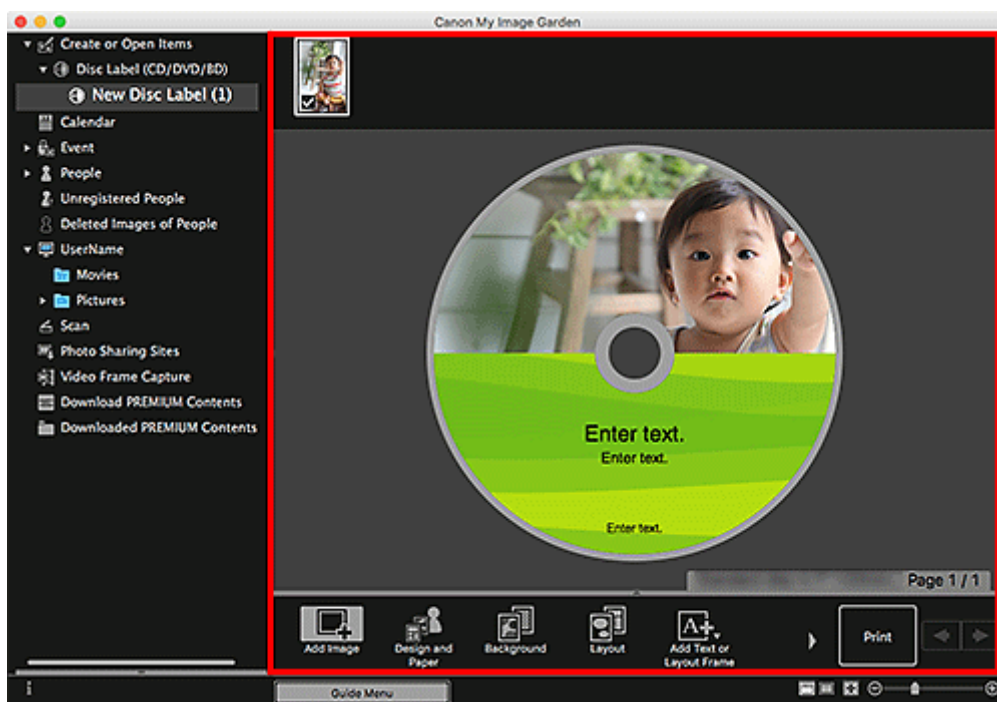
The image(s) appear in the Materials area.

5. Drag image from Materials area, and drop it to desired layout frame.


When you move an image to a layout frame, a cross icon appears on the image.



6. Edit item according to preference.



▶▶▶ Note

- The print area can be set in the **Advanced Settings** dialog displayed by clicking **Advanced...** at the bottom of the screen. If **Advanced...** is not displayed, click  (Right Scroll).

- In cases such as when **Identifying people** appears at **Unregistered People** in Global Menu on the left side of the screen, the result may not be as expected since automatic placement does not apply to images for which analysis has not been completed.
- To swap automatically placed images, see [Inserting Images](#).

7. Click **Print** at bottom right of screen.

The Print dialog appears.

▶▶▶ Important

- If the Print Settings dialog appears, select **Print/scan using AirPrint** checkbox in Preferences dialog.

8. Specify number of copies to print, printer to use, and other settings.

9. Click **Show Details**, and then make sure **120 x 120 mm** is displayed in **Paper Size**.

If not displayed, proceed to Step 8 in [Printing Disc Labels \(CD/DVD/BD\)](#).

10. Select **Media & Quality** from print options pop-up menu, and then select **Auto Select** or **CD-DVD Tray** in **Feed from**.

11. Click **Print**.

When a message appears, set the disc tray.

▶▶▶ Note

- To print disc labels with the same settings from the next time, save the settings specified in the Print dialog to Presets. For the save procedure, see Help of Mac OS.
- If the print result's color tone is faint, select **Media & Quality** in the Print dialog, and then select **Best in Quality**.

Related Topic

- [Item Edit Screen](#)

Creating and Printing Items

You can easily create personalized items using your favorite photos and print them.

Select an image or images in the **Calendar** view, **Event** view, **People** view, **Unregistered People** view, or folder view, then click **New Art** at the bottom of the screen to select the item you want to create.

»» Note

- You can also insert images by selecting the type and design of your item from the **Create or Open Items** view.

You can create and print items such as the following.

Printing Photos in a Variety of Layouts

You can print your favorite photos with dates or in a variety of layouts.



Printing Collages

You can create collages using your favorite photos and print them.



Printing Cards

You can create cards for anniversaries and annual events using your favorite photos and print them.



Printing Calendars

You can create personalized calendars using your memorable photos and print them.



Printing Stickers

You can create personalized stickers by printing your favorite photos on sticker sheets.



Printing in a Cinematic Layout

You can print your favorite photos in a layout that resembles a film or theater.

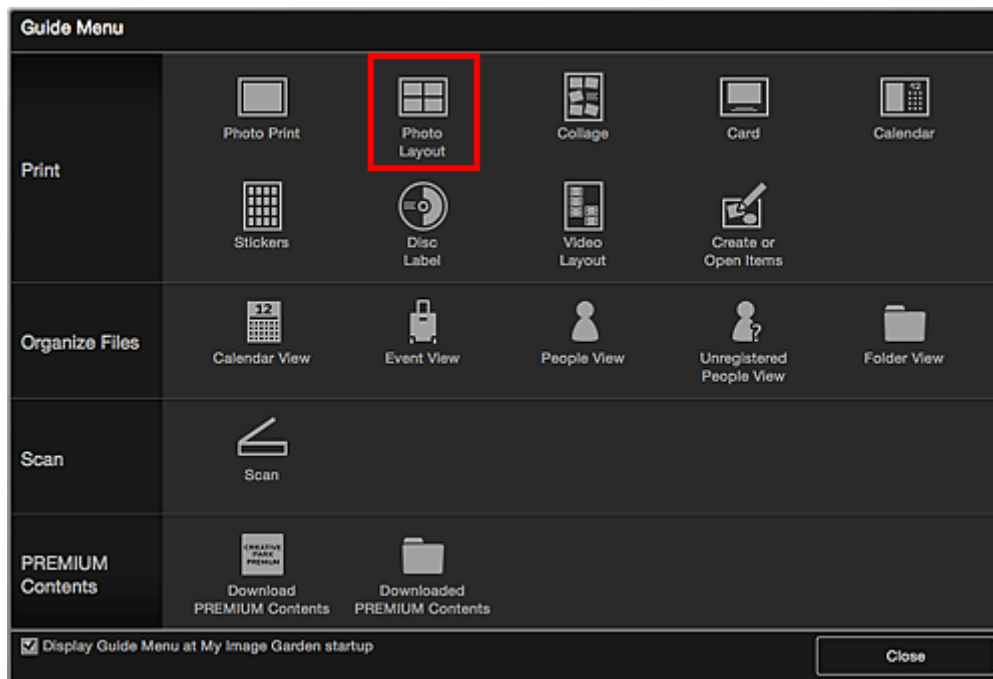


Printing Photos in a Variety of Layouts

You can print your favorite photos with dates or in a variety of layouts.

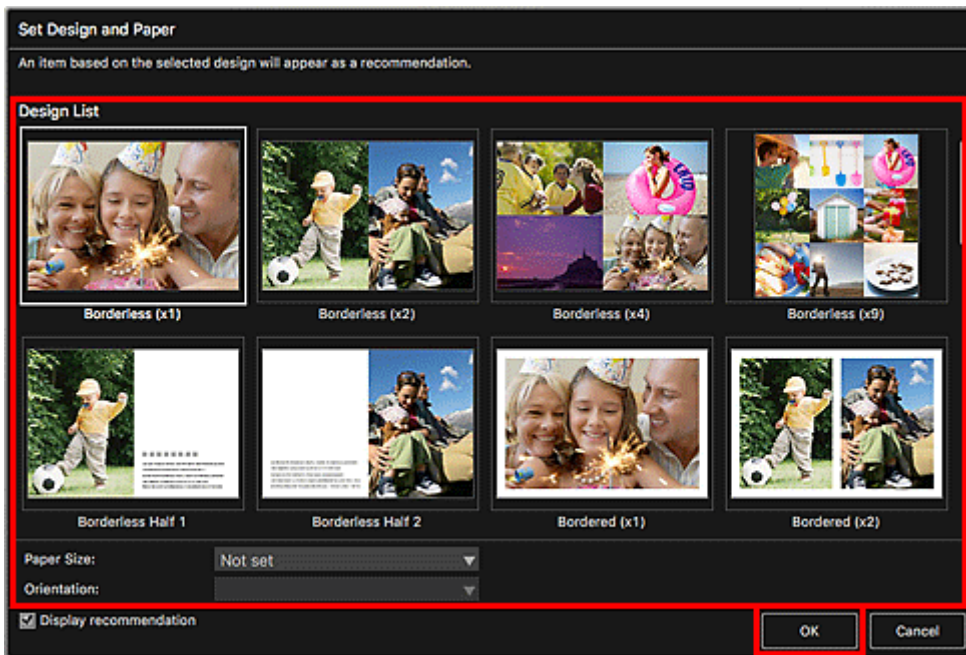


1. Start My Image Garden.
2. Click **Photo Layout** from the **Guide Menu** screen.



The **Set Design and Paper** dialog appears.

3. Specify settings such as design and **Paper Size**, and then click **OK**.



The selected design appears in the Item edit screen.

▶▶▶ Note

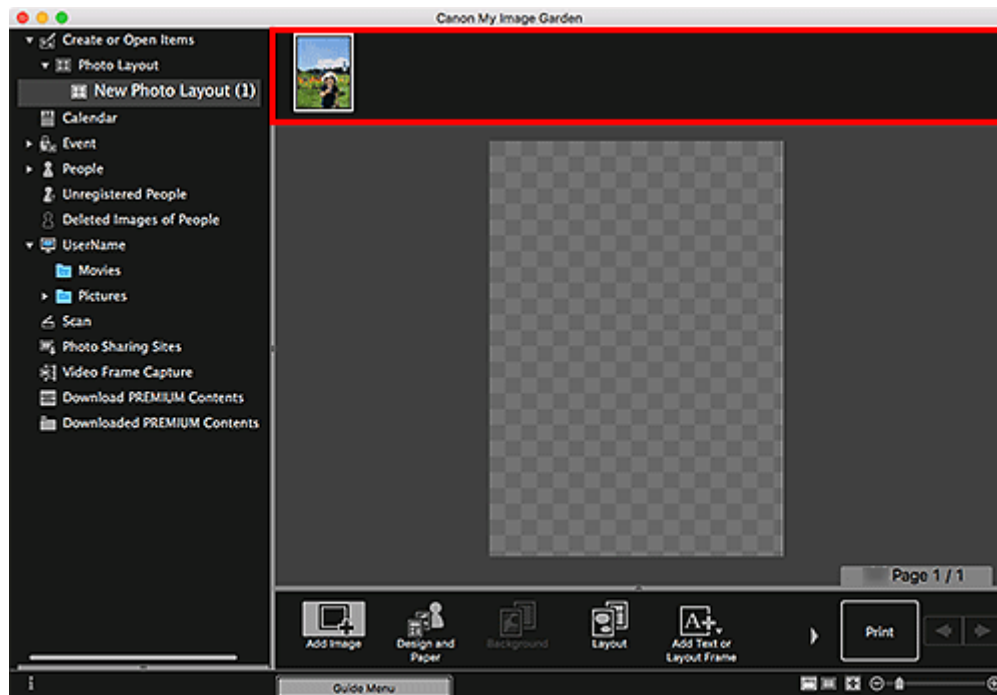
- The layout may not be as expected depending on the photo information or analysis results of the selected images.

4. Select the image(s) you want to print from **Add Image**.

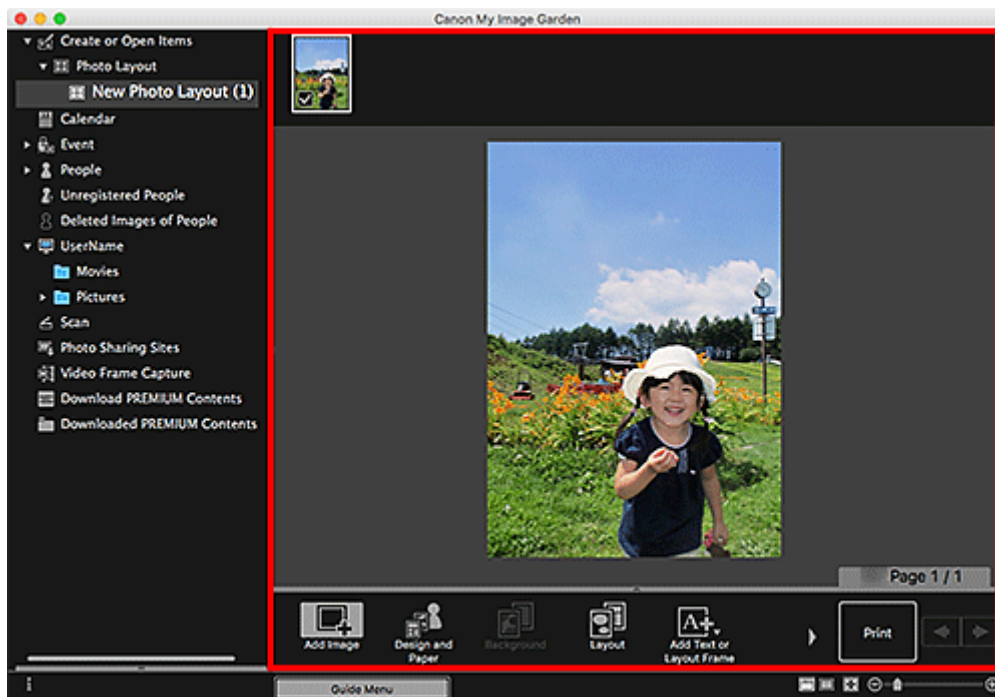
The image(s) appear in the Materials area.

5. Drag image in Materials area, and then drop it to layout frame of item.

When you move an image to a layout frame, a cross icon appears on the image.



6. Edit item according to preference.

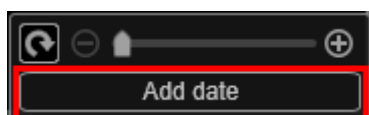


▶▶▶ Note


- In cases such as when **Identifying people** appears at **Unregistered People** in Global Menu on the left side of the screen, the result may not be as expected since automatic placement does not apply to images for which analysis has not been completed.
- To swap automatically placed images, see Inserting Images.

7. Add the date according to your preference.

Select the image to which you want to add the date to display the image editing tool. Click **Add date** to place a checkmark; the date is added to the image.



▶▶▶ Note

- In the **Advanced Settings** dialog displayed by clicking **Advanced...** at the bottom of the screen, you can make advanced settings to the text of the date to be printed or set to print dates on all images. When using an ID photo design, you can also add the same image to all frames within the page or apply the angle and size set to an image to all copies of the same image within the page. If **Advanced...** is not displayed, click  (Right Scroll).

8. Click **Print** at bottom right of screen.

The Print dialog appears.

9. Specify printer and paper to use, number of copies to print, and other settings.

»» Note

- For details on the Print dialog, see Help of Mac OS.

10. Click **Print**.

Related Topic

- [Item Edit Screen](#)

Using Various Functions

- ▶ **Scanning Photos and Documents**
 - Scanning Photos
 - Scanning Documents
- ▶ **Editing Items**
 - Setting the Design and Main People
 - Inserting Images
- ▶ **Correcting/Enhancing Photos**
- ▶ **Cropping Photos**
- ▶ **Creating/Editing PDF Files**
- ▶ **Extracting Text from Images (OCR Function)**

Scanning Photos and Documents

Use My Image Garden to scan photos, documents, and other items easily.

- [Scanning Photos](#)
- [Scanning Documents](#)
- Scanning with Favorite Settings
- Cropping Scanned Images

▶▶ Important

- To scan, you need to install IJ Scan Utility Lite.

▶▶ Note

- Use the **Stitch** function from the **Scan** view to scan the left and right halves of an item larger than the platen and combine the scanned images back into one image. For more details, click Home to return to the top page of the Online Manual for your model and search for "Scanning Items Larger than the Platen (Image Stitch)."
- Click **Driver** in the **Scan** view to start the scanner driver and scan by specifying the output size, image corrections, and other settings.

Scanning Photos

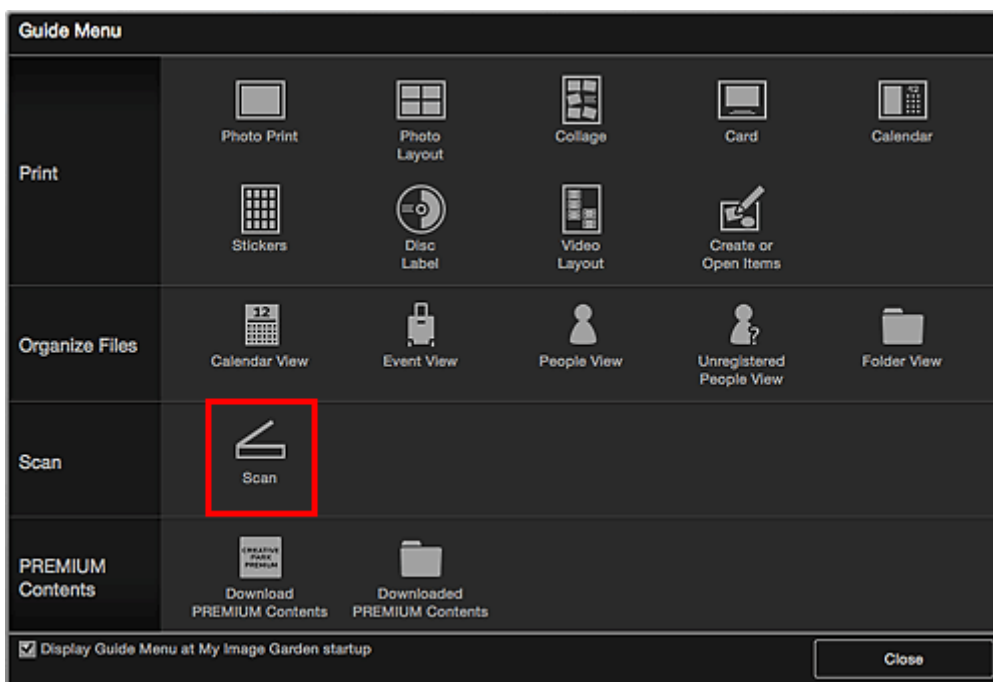
You can scan with settings suitable for photos.

1. Place the item on the platen.

▶▶▶ Note

- For how to place items, click Home to return to the top page of the Online Manual for your model and search for "Placing Items (When Scanning from a Computer)."

2. Start My Image Garden.
3. Click **Scan** from the **Guide Menu** screen.

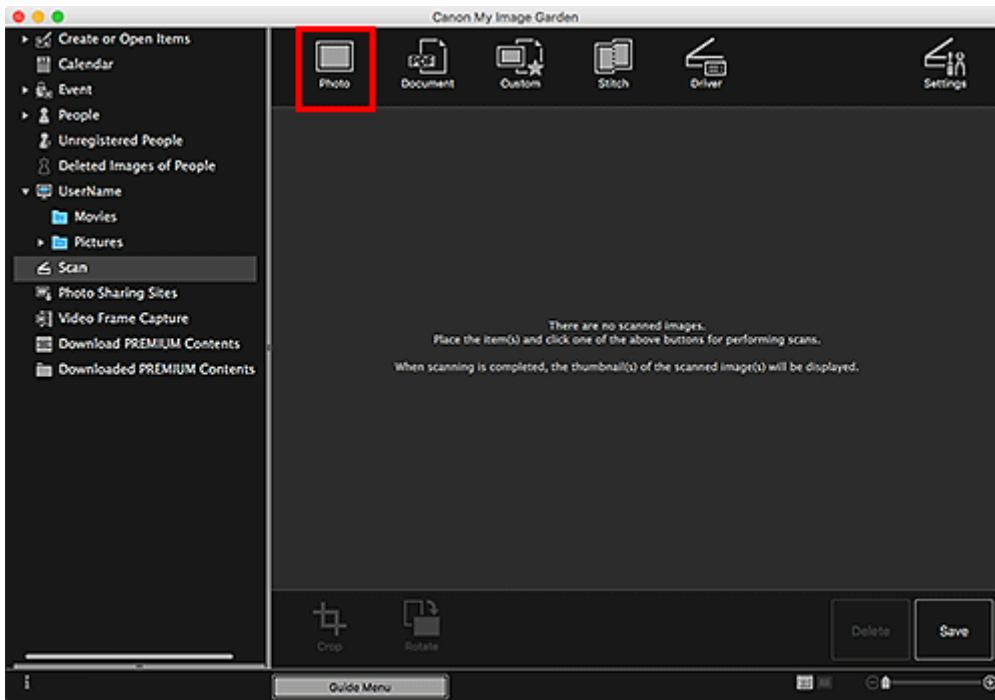


The view switches to **Scan**.

▶▶▶ Note

- Clicking **Scan** from the Global Menu in the Main Screen also switches the view to **Scan**.

4. Click **Photo**.

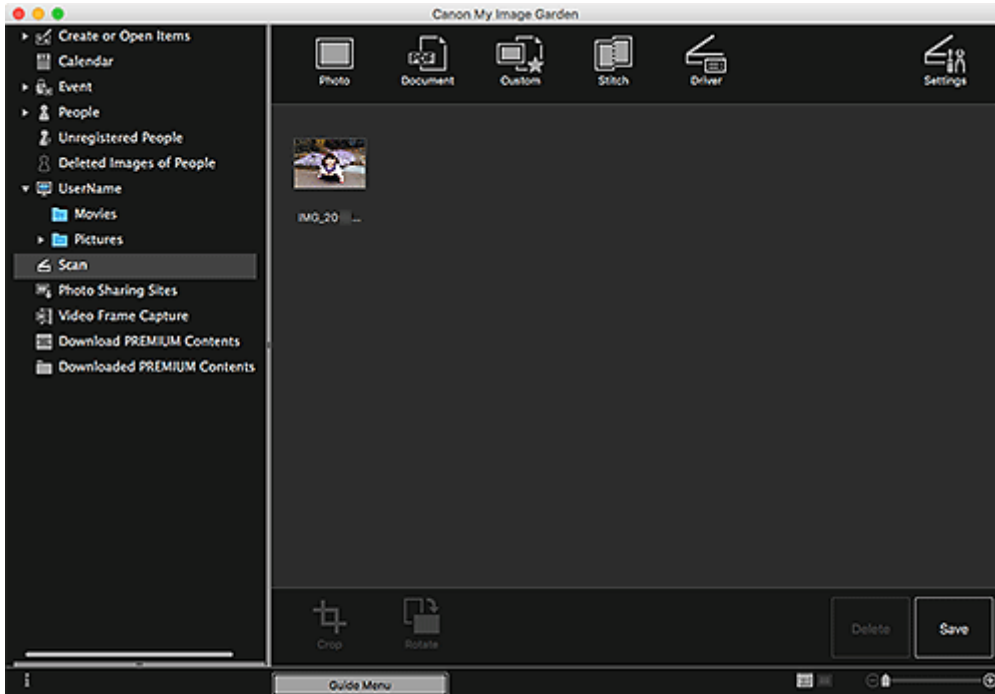


Scanning starts.

▶▶▶ Note

- Click **Cancel** to cancel the scan.

When scanning is completed, the image appears as a thumbnail.



▶▶▶ Note

- You can rotate the selected image 90 degrees clockwise each time you click **Rotate**.
- You can crop images.

■ Cropping Scanned Images

- Click **Save** to save rotated or cropped scanned images.

■ Save Dialog (**Scan View**)

- Set the save location for scanned images on the **Advanced Settings** tab of the **Preferences** dialog displayed by selecting **Preferences...** from the **My Image Garden** menu. Refer to "**Advanced Settings Tab**" for details on the setting procedure.

▶▶ Note

- You can also print scanned images. Control-click a thumbnail and select **Print...** from the displayed menu to display the Print dialog. Select the printer and paper to use, and then click **Print**.

Related Topic

- **Scan View**

Scanning Documents

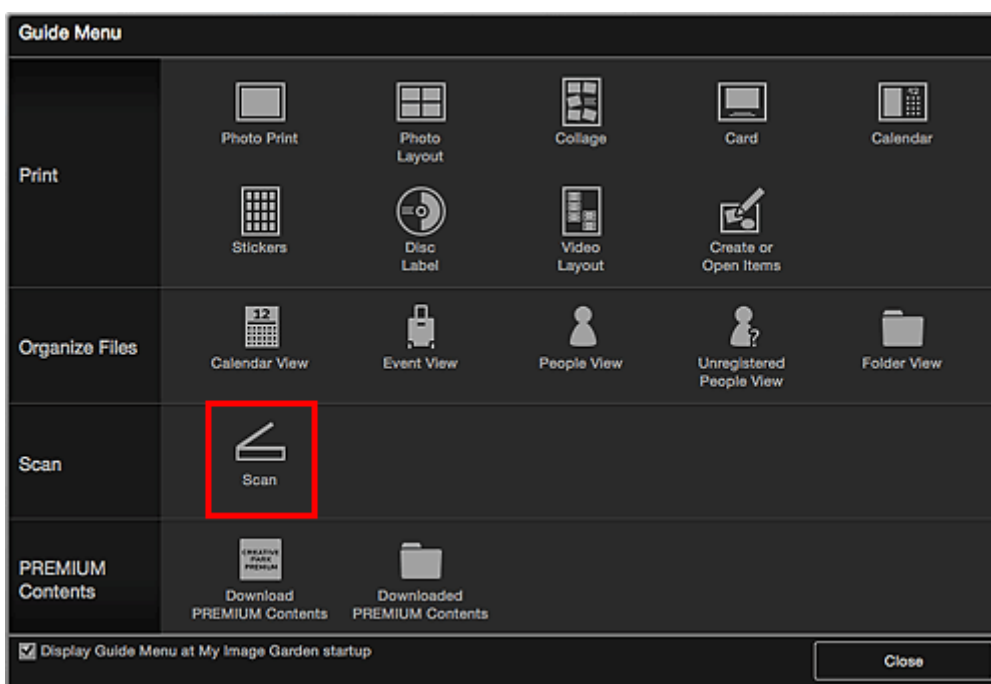
You can scan with settings suitable for documents.

1. Place the item on the platen or ADF (Auto Document Feeder).

▶▶▶ Note

- For how to place items, click Home to return to the top page of the Online Manual for your model and search for "Placing Items (When Scanning from a Computer)."

2. Start My Image Garden.
3. Click **Scan** from the **Guide Menu** screen.

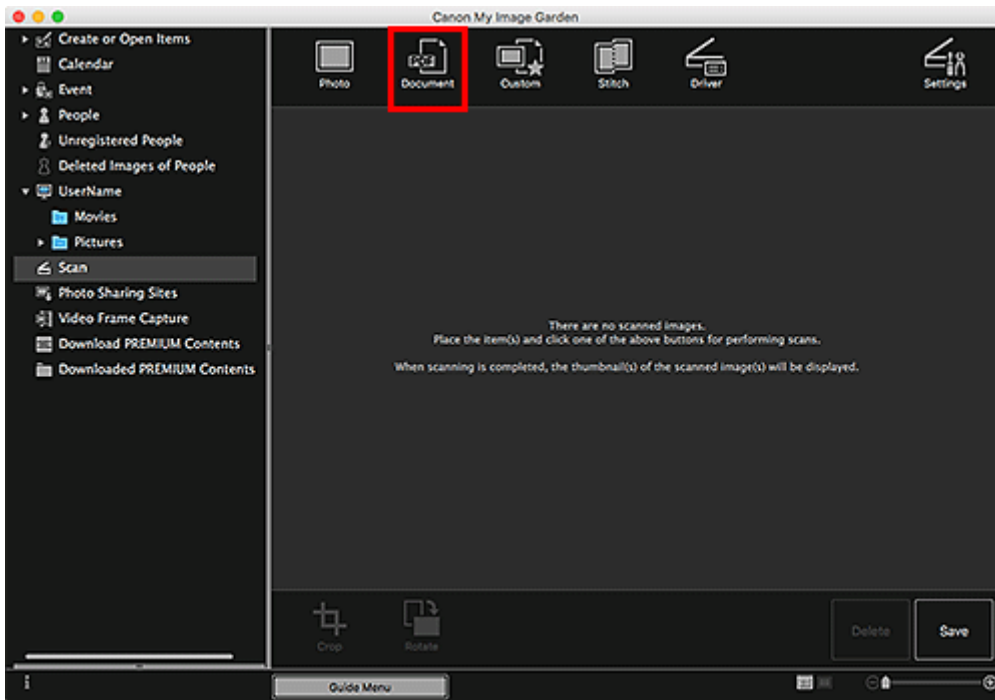


The view switches to **Scan**.

▶▶▶ Note

- Clicking **Scan** from the Global Menu in the Main Screen also switches the view to **Scan**.

4. Click **Document**.

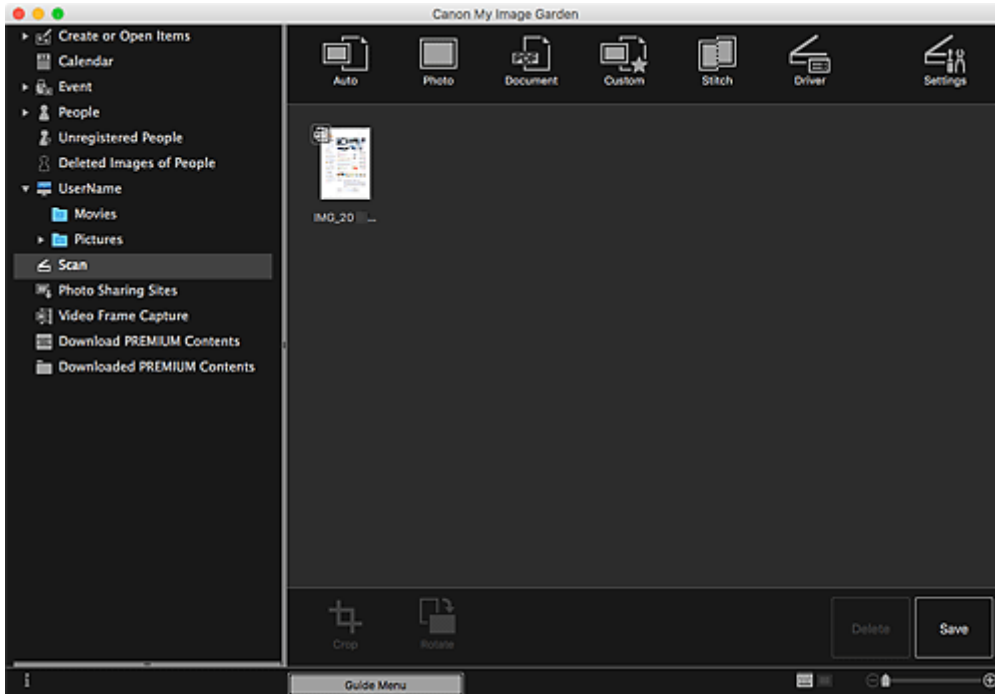


Scanning starts.

▶▶▶ Note

- Click **Cancel** to cancel the scan.

When scanning is completed, the image appears as a thumbnail.



▶▶▶ Note

- Click **Save** to save scanned images.

■ **Save Dialog (Scan View)**

- Set the save location for scanned images on the **Advanced Settings** tab of the **Preferences** dialog displayed by selecting **Preferences...** from the **My Image Garden** menu. Refer to "**Advanced Settings** Tab" for details on the setting procedure.

»» Note

- You can also print scanned images. Control-click a thumbnail and select **Print...** from the displayed menu to display the Print dialog. Select the printer and paper to use, and then click **Print**.

Related Topic

- [Scan View](#)

Free Manuals Download Website

<http://myh66.com>

<http://usermanuals.us>

<http://www.somanuals.com>

<http://www.4manuals.cc>

<http://www.manual-lib.com>

<http://www.404manual.com>

<http://www.luxmanual.com>

<http://aubethermostatmanual.com>

Golf course search by state

<http://golfingnear.com>

Email search by domain

<http://emailbydomain.com>

Auto manuals search

<http://auto.somanuals.com>

TV manuals search

<http://tv.somanuals.com>