

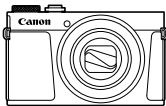
Canon

PowerShot **G9X** Mark II

Getting Started **ENGLISH**

Package Contents

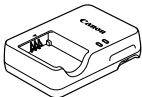
Before use, make sure the following items are included in the package. If anything is missing, contact your camera retailer.



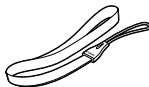
Camera



Battery Pack
NB-13L*



Battery Charger
CB-2LHE



Wrist Strap

* Do not peel off the adhesive covering from a battery pack.

- Printed matter is also included.
- A memory card is not included.

Compatible Memory Cards

No memory card is included. Purchase one of the following kinds of card as needed. These memory cards can be used, regardless of capacity. For details on the number of shots and recording time per memory card, see "Specifications" in the downloadable *Camera User Guide*.

- SD memory cards*¹
- SDHC memory cards*^{1*2}
- SDXC memory cards*^{1*2}



*¹ Cards conforming to SD standards. However, not all memory cards have been verified to work with the camera.

*² UHS-I memory cards are also supported.

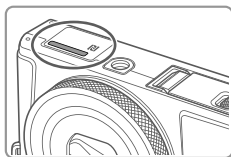
Manuals and Software



You can download the manuals and software from the following URL.

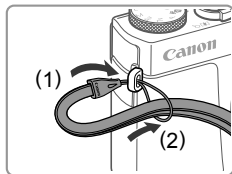
<http://www.canon.com/icpd/>

- With a computer connected to the Internet, access the above URL.
- Access the site for your country or region.
- Adobe Reader is required to view the manuals.
- For instructions on downloading and installing the software, refer to the *Camera User Guide* available for download.



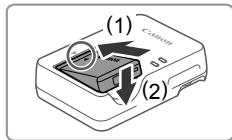
- You may be requested to enter the serial number (body number) when downloading the manuals or software. In this case, enter the number printed on the bottom of the camera.

Initial Preparations



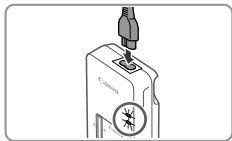
1 Attach the strap.

- Attach the included strap to the camera as shown.
- The strap can also be attached to the left side of the camera.



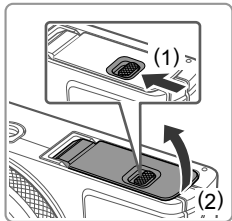
2 Insert the battery pack.

- After aligning the ▲ marks on the battery pack and charger, insert the battery pack by pushing it in (1) and down (2).



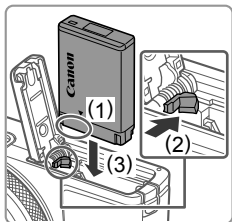
3 Charge the battery pack.

- Plug the power cord into the charger, then plug the other end into a power outlet.
- The charging lamp turns orange, and charging begins.
- When charging is finished, the lamp turns green. Remove the battery pack.
- For details on charging time and the number of shots or recording time available with a fully charged battery pack, refer to “Specifications” in the downloadable *Camera User Guide*.



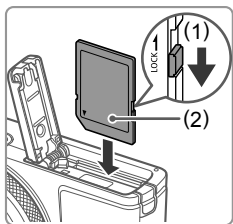
4 Open the cover.

- Slide the switch (1) and open the cover (2).



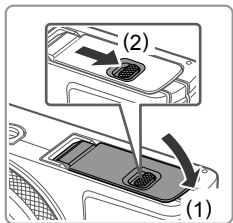
5 Insert the battery pack.

- Holding the battery pack with the terminals in the position shown (1), hold the battery lock toward (2) and insert the battery pack toward (3) until the lock clicks shut.
- If you insert the battery pack facing the wrong way, it cannot be locked into the correct position. Always confirm that the battery pack is facing the right way and locks when inserted.
- To remove the battery pack, press the battery lock in the direction of the arrow.



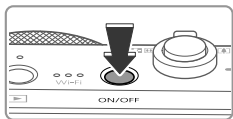
6 Check your card's write-protect switch and insert the memory card.

- Recording is not possible on memory cards with a write-protect switch when the switch is in the locked position. Move the switch toward (1).
- Insert the memory card with the label (2) facing as shown until it clicks into place.
- To remove the memory card, push it in until you feel a click, and then slowly release it.



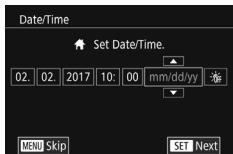
7 Close the cover.

- Lower the cover (1) and hold it down as you slide the switch, until it clicks into the closed position (2).
- If the cover will not close, make sure you inserted the battery pack facing the right way in step 2.



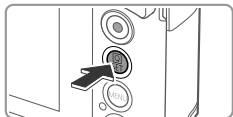
8 Turn the camera on.

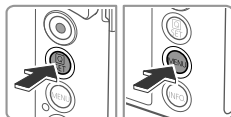
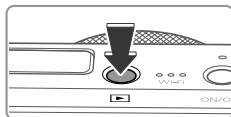
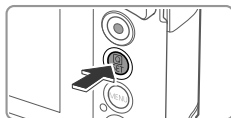
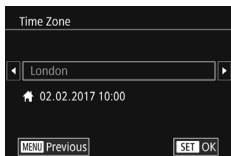
- Press the ON/OFF button.
- The [Date/Time] screen is displayed.



9 Set the date and time.

- Touch the item to configure, and then touch [▲][▼] to specify the date and time.
- When finished, press the [SET] button.





10 Specify your home time zone.

- Touch [◀][▶] to choose your home time zone.
- Press the [SET] button when finished. After a confirmation message, the setting screen is no longer displayed.
- To turn off the camera, press the ON/OFF button.

11 Configure the display language.

- Press the [▶] button.
- Press and hold the [SET] button, and then immediately press the [MENU] button.
- Touch a display language to choose it, and then press the [SET] button.

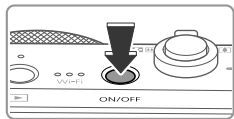
Changing the Date and Time

- To adjust the date and time once you have set it, first press the [MENU] button and move the zoom lever to choose the [F2] tab. Choose [Date/Time], press the [SET] button, set the date and time as described in step 9, and then press the [SET] button.

Trying the Camera Out

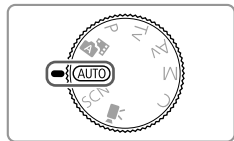
Shooting

For fully automatic selection of the optimal settings for specific scenes, simply let the camera determine the subject and shooting conditions.



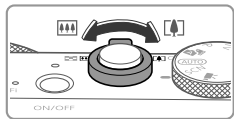
1 Turn the camera on and enter [AUTO] mode.

- Press the ON/OFF button.
- Set the mode dial to [AUTO].



2 Compose the shot.

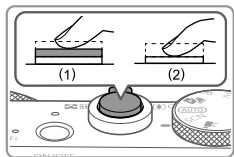
- To zoom in and enlarge the subject, move the zoom lever toward [📷] (telephoto) as you watch the screen, and to zoom away from the subject, move it toward [📷] (wide angle).

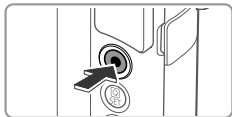


3 Shoot.

Shooting Still Images

- Press the shutter button lightly (1).
- The camera beeps twice after focusing, and AF frames are displayed to indicate image areas in focus. Press the shutter button all the way down (2).
- If [Raise the flash] is displayed, move the [📷] switch to raise the flash. It will fire when shooting. If you prefer not to use the flash, push it down with your finger, into the camera.

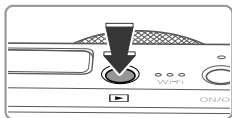




Recording Movies

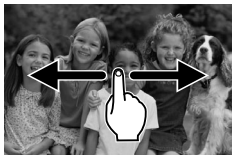
- Press the movie button to start recording, and press it again to stop.

Viewing



1 Enter Playback mode.

- Press the [▶] button.



2 Choose images.

- To view the previous or next image, drag left to right or right to left.
- Movies are identified by a [SET ▶] icon. To play movies, go to step 3.

3 Play movies.

- Touch [▶] to start playback.
- To adjust the volume, drag up or down across the screen during playback.
- After the movie is finished, [▶] is displayed.

Erasing Images

- To erase a selected image, press the [SET] button, touch [🗑️], and then press the [SET] button again. After [Erase?] is displayed, touch [Erase]. Note that erased images cannot be recovered.

Trademarks and Licensing

- Microsoft and Windows are trademarks or registered trademarks of Microsoft Corporation in the United States and/or other countries.
- Macintosh and Mac OS are trademarks of Apple Inc., registered in the U.S. and other countries.
- App Store, iPhone, and iPad are trademarks of Apple Inc.
- The SDXC logo is a trademark of SD-3C, LLC.
- HDMI, the HDMI logo and High-Definition Multimedia Interface are trademarks or registered trademarks of HDMI Licensing, LLC.
- The iFrame logo and the iFrame symbol are trademarks of Apple Inc.
- Wi-Fi®, Wi-Fi Alliance®, WPA™, WPA2™ and Wi-Fi Protected Setup™ are trademarks or registered trademarks of the Wi-Fi Alliance.
- The Bluetooth® word mark and logos are registered trademarks owned by Bluetooth SIG, Inc. and any use of such marks by Canon Inc. is under license. Other trademarks and trade names are those of their respective owners.
- The N-Mark is a trademark or registered trademark of NFC Forum, Inc. in the United States and in other countries.
- All other trademarks are the property of their respective owners.
- This device incorporates exFAT technology licensed from Microsoft.
- This product is licensed under AT&T patents for the MPEG-4 standard and may be used for encoding MPEG-4 compliant video and/or decoding MPEG-4 compliant video that was encoded only (1) for a personal and non-commercial purpose or (2) by a video provider licensed under the AT&T patents to provide MPEG-4 compliant video. No license is granted or implied for any other use for MPEG-4 standard.

Disclaimer

- Unauthorized reproduction of this guide is prohibited.
- All measurements based on Canon testing standards.
- Information subject to change without notice, as are product specifications and appearance.
- Illustrations and screenshots in this guide may differ slightly from the actual equipment.
- The above items notwithstanding, Canon cannot be held liable for any loss arising from the use of this product.

Only for European Union and EEA (Norway, Iceland and Liechtenstein)



These symbols indicate that this product is not to be disposed of with your household waste, according to the WEEE Directive (2012/19/EU), the Battery Directive (2006/66/EC) and/or national legislation implementing those Directives.

If a chemical symbol is printed beneath the symbol shown above, in accordance with the Battery Directive, this indicates that a heavy metal (Hg = Mercury, Cd = Cadmium, Pb = Lead) is present in this battery or accumulator at a concentration above an applicable

threshold specified in the Battery Directive.

This product should be handed over to a designated collection point, e.g., on an authorized one-for-one basis when you buy a new similar product or to an authorized collection site for recycling waste electrical and electronic equipment (EEE) and batteries and accumulators. Improper handling of this type of waste could have a possible impact on the environment and human health due to potentially hazardous substances that are generally associated with EEE. Your cooperation in the correct disposal of this product will contribute to the effective usage of natural resources.

For more information about the recycling of this product, please contact your local city office, waste authority, approved scheme or your household waste disposal service or visit www.canon-europe.com/weee, or www.canon-europe.com/battery.

CAUTION

RISK OF EXPLOSION IF BATTERY IS REPLACED BY AN INCORRECT TYPE.

DISPOSE OF USED BATTERIES ACCORDING TO LOCAL REGULATION.

To ensure proper operation of this product, use of genuine Canon accessories is recommended.

- Interface Cable IFC-600PCU

HDMI cable (camera end: Type D): Use a commercially available cable no longer than 2.5m.

Graphical symbols placed on the equipment



Class II equipment



Direct current

The model number is PC2323 (including WLAN module model WM227 and BLE module model WM500). To identify your model, check the label on the bottom of the camera or behind the tilt-up screen for a number beginning with PC.

Countries and Regions Permitting Wireless Function Use

- Use of wireless function is restricted in some countries and regions, and illegal use may be punishable under national or local regulations. To avoid violating wireless regulations, visit the Canon website to check where use is allowed.

Note that Canon cannot be held liable for any problems arising from wireless function use in other countries and regions.

Doing any of the following may incur legal penalties:

- Altering or modifying the product
 - Removing the certification labels from the product
- Do not use the wireless function of this product near medical equipment or other electronic equipment.

Use of the wireless function near medical equipment or other electronic equipment may affect operation of those devices.

Hereby, Canon Inc. declares that this equipment is in compliance with Directive 2014/53/EU.

The full text of the EU declaration of conformity is available at the following internet address: <http://www.canon-europe.com/ce-documentation>

**Complies with
IMDA Standards
DB00671**

Wi-Fi Frequency range: 2401MHz - 2473MHz

Wi-Fi Maximum output power: 10.9dBm

Bluetooth Frequency range: 2402MHz - 2480MHz

Bluetooth Maximum output power: 7.14dBm

CANON EUROPA N.V. Bovenkerkerweg 59, 1185 XB Amstelveen, The Netherlands

CANON INC. 30-2, Shimomaruko 3-chome, Ohta-ku, Tokyo 146-8501, Japan

Some logos for technical standards the camera has met can be viewed on the screen by choosing MENU ► [F4] tab ► [Certification Logo Display].

Free Manuals Download Website

<http://myh66.com>

<http://usermanuals.us>

<http://www.somanuals.com>

<http://www.4manuals.cc>

<http://www.manual-lib.com>

<http://www.404manual.com>

<http://www.luxmanual.com>

<http://aubethermostatmanual.com>

Golf course search by state

<http://golfingnear.com>

Email search by domain

<http://emailbydomain.com>

Auto manuals search

<http://auto.somanuals.com>

TV manuals search

<http://tv.somanuals.com>