

# RC-V100

リモートコントローラー

**使用説明書**

Jp

Remote Controller

**Instruction Manual**

En

Télécommande

**Mode d'emploi**

Fr

Fernbedienung

**Bedienungsanleitung**

De

Controllo remoto

**Manuale di istruzioni**

It

Controlador remoto

**Manual de Instrucciones**

Es

Пульт дистанционного управления

**Руководство по эксплуатации**

Ru

Қашықтан басқару құралы

**Өнім туралы ақпарат**

Kk

遥控器

**使用说明书**

Zh

在使用本产品之前，请务必先仔细阅读本使用说明书。

请务必妥善保管好本书，以便日后能随时查阅(保留备用)。请在充分理解内容的基础上，正确使用。

# Introducing the Canon Remote Controller RC-V100

Thank you for purchasing this Canon product.

The Remote Controller RC-V100 was especially developed to operate compatible Canon Digital Cinema Cameras and HD Camcorders (hereafter, simply “camera”) from a distance. By simply connecting the remote controller to the REMOTE terminal on the camera with the supplied (or an optional) remote cable, you can easily operate many of the camera’s functions. For details about compatible functions, refer to the most up-to-date version of the camera’s Instruction Manual (PDF file). The remote controller will draw its power supply from the camera.

## Basic operation of the camera (📖 11)

Using the remote controller, you can turn the camera on/off, navigate the camera’s menus and easily change custom picture and other settings.

## Control recording functions (📖 11)

Using the remote controller, you can start and stop recording, display color bars, review recordings and control many other recording functions.

## Adjust the aperture, focus and zoom (📖 15, 16)

The remote controller features independent IRIS, FOCUS and ZOOM dials for easy direct operation. The IRIS dial is larger and placed closer to the operator to allow for easier access.

## Controls for ISO speed/gain, shutter speed and ND filter (📖 12)

## Controls for white balance and master black (📖 14)

You can easily adjust settings that affect the overall color balance of the picture, like the white balance and master black. Both have separate R Gain and B Gain adjustment dials.

## Assignable buttons (📖 17)

The remote controller has 4 assignable buttons. You can assign frequently used functions to these buttons and easily operate them from the remote controller.

## Controls for adjusting the picture quality (📖 13, 16)

You can easily adjust settings that affect the gradation and sharpness of the picture (master pedestal, knee settings, black gamma level and sharpness level) using convenient dedicated adjustment dials.

## Key lock function (📖 16)

Using the ACTIVE button on the remote controller, you can lock all or part of the buttons and dials on the remote controller. This can be useful for preventing unwanted changes due to inadvertently operating one of the controls.

## Customization (📖 19)

You can personalize various aspects of the remote controller to your preferences. For example, you can change the direction and sensitivity of the dials or the brightness of buttons and indicators.

# Table of Contents

2	Introducing the Canon Remote Controller RC-V100
4	Handling Precautions
6	Connecting the Remote Controller to a Camera
6	Using the REMOTE A Terminal
7	Using the REMOTE B Terminal
8	Turning On the Remote Controller
8	Disconnecting the Remote Controller
9	Names of Parts and Their Functions
10	Front
18	Back / Bottom
19	Customization
21	Specifications / Measurements

## Package Contents

- RC-V100 Remote Controller
- Remote cable (∅ 2.5 mm to ∅ 3.5 mm, 5 m (16.4 ft.))

## Optionals

- RR-10 8-pin Remote Cable (10 m (32.8 ft.))
- RR-100 8-pin Remote Cable (100 m (328 ft.))

Please read this manual carefully before you use the remote controller and retain these instructions for future reference. For details about the camera's functions, refer to the camera's Instruction Manual.

# Handling Precautions

- Do not disassemble the remote controller. If the remote controller does not function properly, consult qualified service personnel.
- Do not subject the remote controller to shocks or vibration as this may cause damage.
- Do not use or store the remote controller in dusty or sandy places. The remote controller is not waterproof - avoid also water, mud or salt. If any of the above should get into the remote controller it may damage it. Consult a Canon Service Center as soon as possible.
- Do not leave the remote controller in places subject to high temperatures (like the inside of a car parked under direct sunlight), or high humidity.
- Do not connect the remote controller to cameras or other devices that are not compatible with the remote controller.
- After storing the remote controller, or while using it in very cold or very hot surroundings, do not touch the metallic parts of the remote controller with bare hands. The remote controller has a metallic exterior surface that is thermally conductive. It can easily get hot or cold depending on surrounding temperatures. In extreme cases, touching the remote controller with bare hands can cause contact burns or the skin to get stuck to the surface. Use the remote controller within the operating temperature range (0 - 40 °C (32 - 104 °F)).

This device complies with Part 15 of the FCC Rules. Operation is subject to the following two conditions: (1) This device may not cause harmful interference, and (2) this device must accept any interference received, including interference that may cause undesired operation.

Note: This equipment has been tested and found to comply with the limits for a Class B digital device, pursuant to Part 15 of the FCC Rules. These limits are designed to provide reasonable protection against harmful interference in a residential installation. This equipment generates, uses and can radiate radio frequency energy and, if not installed and used in accordance with the instructions, may cause harmful interference to radio communications.

However, there is no guarantee that interference will not occur in a particular installation. If this equipment does cause harmful interference to radio or television reception, which can be determined by turning the equipment off and on, the user is encouraged to try to correct the interference by one or more of the following measures:

- Reorient or relocate the receiving antenna.
- Increase the separation between the equipment and receiver.
- Connect the equipment into an outlet on a circuit different from that to which the receiver is connected.
- Consult the dealer or an experienced radio / TV technician for help.

Do not make any changes or modifications to the equipment unless otherwise specified in the manual. If such changes or modifications should be made, you could be required to stop operation of the equipment.

CAN ICES-3(B)/NMB-3(B)

### **Only for European Union and EEA (Norway, Iceland and Liechtenstein)**



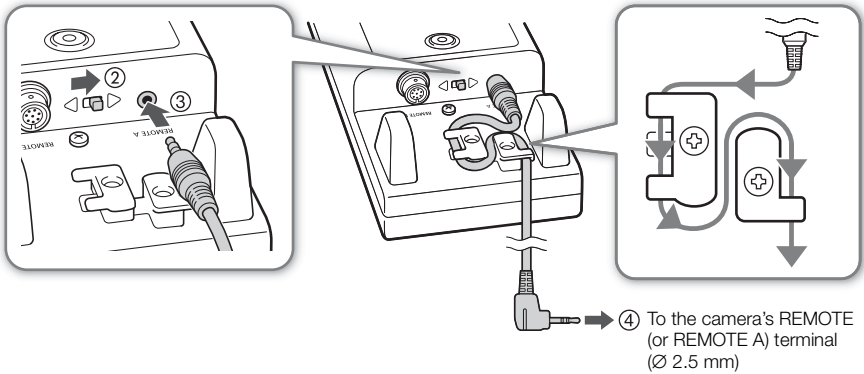
This symbol indicates that this product is not to be disposed of with your household waste, according to the WEEE Directive (2012/19/EU) and national legislation. This product should be handed over to a designated collection point, e.g., on an authorized one-for-one basis when you buy a new similar product or to an authorized collection site for recycling waste electrical and electronic equipment (WEEE). Improper handling of this type of waste could have a possible negative impact on the environment and human health due to potentially hazardous substances that are generally associated with WEEE. At the same time, your cooperation in the correct disposal of this product will contribute to the effective usage of natural resources. For more information about where you can drop off your waste equipment for recycling, please contact your local city office, waste authority, approved WEEE scheme or your household waste disposal service. For more information regarding return and recycling of WEEE products, please visit [www.canon-europe.com/weee](http://www.canon-europe.com/weee).

# Connecting the Remote Controller to a Camera

The remote controller can be connected to compatible cameras using the REMOTE A or REMOTE B terminal. The terminal used will be determined by the type of REMOTE terminal on the camera used and the intended use. For details, refer to the most up-to-date version of the camera's Instruction Manual (PDF file).

## Using the REMOTE A Terminal

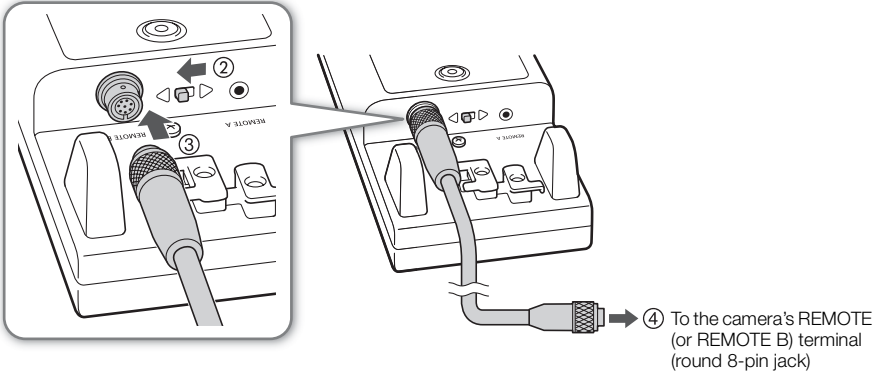
Connect the remote controller to a compatible camera using the supplied remote cable (Ø 2.5 mm to Ø 3.5 mm).



- 1 Turn off the camera.
- 2 Remote controller: Slide the terminal selection switch to the REMOTE A position.
- 3 Remote controller: Connect the Ø 3.5 mm end (straight plug) of the supplied remote cable to the REMOTE A terminal and pass the cable through the cable clamps to secure it.
- 4 Camera: Connect the Ø 2.5 mm end (L-shaped plug) of the cable to the camera's REMOTE (or REMOTE A) terminal.

## Using the REMOTE B Terminal

Connect the remote controller to a compatible camera using the optional RR-10 or RR-100 8-pin Remote Cable (10 m/100 m (32.8 ft./328 ft.), respectively). With the REMOTE B connection, compatible cameras can receive and process multiple simultaneous commands from the remote controller.



- 1 Turn off the camera.
- 2 Remote controller: Slide the terminal selection switch to the REMOTE B position.
- 3 Remote controller: Connect one end of the 8-pin remote cable to the REMOTE B terminal.
  - Be sure to align the orientation notch on the cable's plug with the protrusion on the terminal.
- 4 Camera: Connect the other end of the 8-pin remote cable to the camera's REMOTE (or REMOTE B) terminal.
  - Again, paying attention to the orientation notch.

### **i** NOTES

- The remote controller's REMOTE A and REMOTE B terminals cannot be used simultaneously. Make sure that a cable is connected only to the terminal selected with the terminal selection switch.

## Turning On the Remote Controller

### 1 Turn on the camera.

- Depending on the camera used, you may need to activate the remote controller using the camera's menu. For details, refer to the camera's instruction manual.
- The remote controller will turn on and the CAMERA POWER button will light up in green.
- Immediately after activating the remote controller, all the controls will be locked.

### 2 Remote controller: Press the ACTIVE button repeatedly to change the key lock mode as necessary (📖 16).

## Disconnecting the Remote Controller

### 1 Turn off the camera.

### 2 Disconnect the cable from the remote controller's REMOTE A or REMOTE B terminal and from the corresponding terminal on the camera.

- To disconnect the optional 8-pin remote cable, pull back the metallic tip of the plug and then disconnect the cable from the terminal.






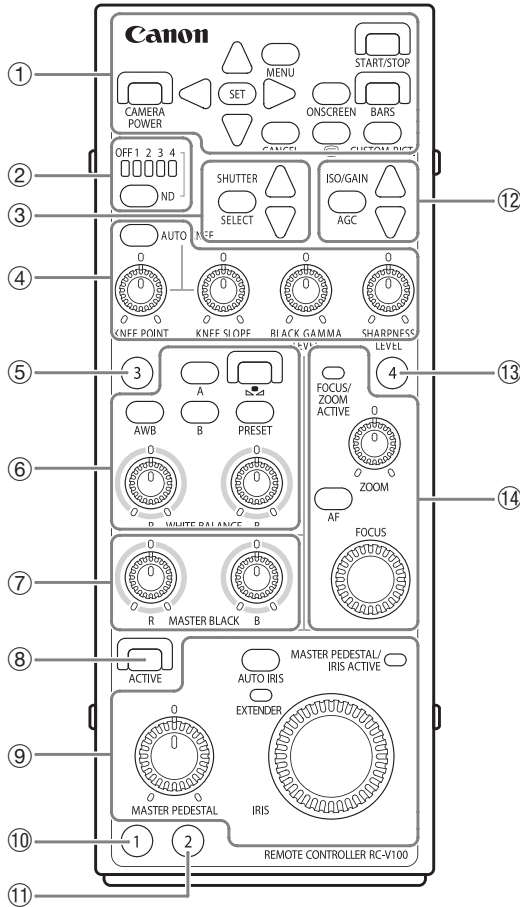
# Names of Parts and Their Functions

You can find an explanation of each control's function after the illustrations. Some of the buttons can light up under different conditions. You will find the details in each button's explanation as well.

## NOTES

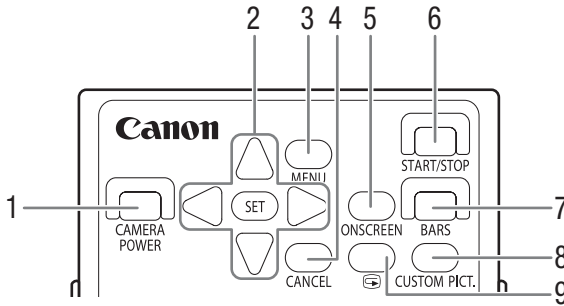
- Use the various controls on the remote controller while checking the picture on the camera's screen or an external monitor connected to the camera.
- Depending on the camera used, some of the functions of the remote controller's buttons and dials may not be available or may function differently.
- If you think the camera's recording might pick up the remote controller's operating sounds, you can turn them off ( 19).

# Front



- |   |  |
|---|--|
| ① Basic operations (📖 11)                         | ⑧ ACTIVE button (📖 16)                     |
| ② ND filter controls (📖 12)                       | ⑨ Master pedestal and iris controls (📖 16) |
| ③ Shutter controls (📖 12)                         | ⑩ Assignable button 1 (📖 17)               |
| ④ Knee, black gamma and sharpness controls (📖 13) | ⑪ Assignable button 2 (📖 17)               |
| ⑤ Assignable button 3 (📖 17)                      | ⑫ ISO Speed/Gain controls (📖 12)           |
| ⑥ White balance controls (📖 14)                   | ⑬ Assignable button 4 (📖 17)               |
| ⑦ Master black controls (📖 14)                    | ⑭ Zoom and focus controls (📖 15)           |

## Basic operations



### 1 CAMERA POWER button

Turns the camera on/off. The camera's operating mode is determined by the position of the camera's **POWER** switch. If the camera's **POWER** switch is set to OFF, the camera cannot be turned on using the remote controller.

You can check if the camera is on or off by the button's light: The button flashes quickly (2 to 3 times per second) while the remote controller is connecting to the camera. When the connection is completed correctly, the button lights up in green. When the camera is in power save mode or lens exchange mode, the button flashes slowly (once per second) in green.

#### NOTES

- When the remote controller cannot correctly connect to the camera, the CAMERA POWER button will keep flashing quickly. Check that the remote controller is connected to a compatible camera and, if necessary, that use of the remote controller has been correctly activated on the camera.

### 2 Up / Down / Left / Right / SET buttons

Use these buttons to operate the camera's menus and select settings. Press the navigation buttons to move the orange selection frame in the various menu screens. Press the SET button to select a menu setting.

Only with a REMOTE B terminal connection: These buttons light up in orange.

### 3 MENU button

Opens and closes the menu.

Only with a REMOTE B terminal connection: While a menu screen is displayed, the button lights up in orange.

### 4 CANCEL button

Press the button to return to the previous submenu or to interrupt some operations while they are in progress.

Only with a REMOTE B terminal connection: The button lights up in orange.

### 5 ONSCREEN (output onscreen displays) button

Turns on/off the overlaying of the camera's onscreen displays on video output from the camera's terminals.

Only with a REMOTE B terminal connection: While onscreen displays are being output with the video signal, the button lights up in orange.

## 6 START/STOP button

Starts and stops video recording.

While recording, the button lights up in red.

## 7 BARS (display color bars) button

Turns on/off the display of color bars on the screen.

While the color bars are displayed, the button lights up in orange.

## 8 CUSTOM PICT. (custom picture) button

Opens and closes the custom picture menu.

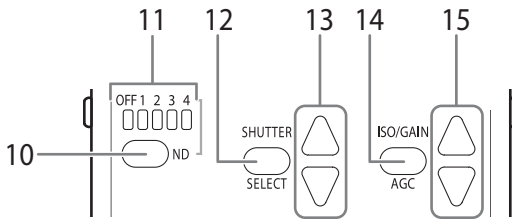
Only with a REMOTE B terminal connection: While the custom picture menu is displayed, the button lights up in orange.

## 9 (review recording) button

Reviews the recording.

While the recording is being reviewed, the button lights up in orange.

## ND filter controls, Shutter controls and ISO speed/Gain controls



## 10 ND (change ND filter) button

Each press of the button changes the ND filter.

Only with a REMOTE B terminal connection: The button lights up in orange.

## 11 ND filter indicators

The indicator of the currently selected ND filter's number will light up in orange\*. The indicator will change even if you changed the ND filter setting on the camera itself. Depending on the camera used and the current position of the ND filter, the indicators may flash to indicate other conditions.

\* Some cameras are compatible with an extended ND range. When connected to such cameras, indicators 1 and 4 will both light up to indicate the ND 5 setting and indicators 2 and 4 will both light up to indicate the ND 6 setting.

## 12 SHUTTER SELECT (select the shutter mode) button

Each press of the button changes the shutter mode. Available shutter modes will differ depending on the camera used.

Only with a REMOTE B terminal connection: The button lights up in orange.

## 13 SHUTTER ▲/▼ buttons

When a relevant shutter mode is selected, these buttons change the shutter value. Available values will differ depending on the camera used and other settings on the camera.

Only with a REMOTE B terminal connection: The buttons light up in orange.

#### 14 AGC (automatic gain control) button

Toggles between automatic and manual ISO speed/gain adjustment.

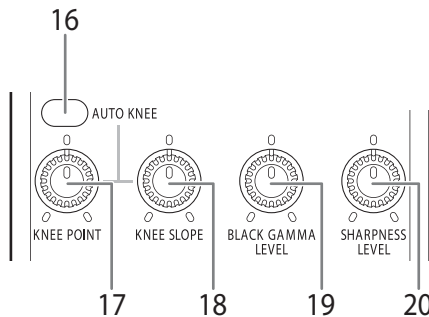
When the camera is set to automatic ISO speed/gain control, the button lights up in orange.

#### 15 ISO/GAIN ▲/▼ buttons

While the ISO speed/gain adjustment is set to manual, these buttons change the ISO speed or gain by 1 stop up or down. Available values will differ depending on the camera used and other settings on the camera.

Only with a REMOTE B terminal connection: The buttons light up in orange.

### Knee, black gamma and sharpness controls



#### 16 AUTO KNEE button

Toggles the adjustment method of the knee settings between automatic and manual. When the camera is set to automatic knee adjustment, the button lights up in orange.

#### 17 KNEE POINT dial

When the automatic knee setting is turned off, this dial changes the knee point manually.

By default, the operating mode of the dial is set to relative mode (📖 19). You can change the direction in which you need to turn the dial and its sensitivity to your preference (📖 19).

#### 18 KNEE SLOPE dial

When the automatic knee setting is turned off, this dial changes the knee slope manually.

By default, the operating mode of the dial is set to relative mode (📖 19). You can change the direction in which you need to turn the dial and its sensitivity to your preference (📖 19).

#### 19 BLACK GAMMA LEVEL dial

This dial adjusts the black gamma level.

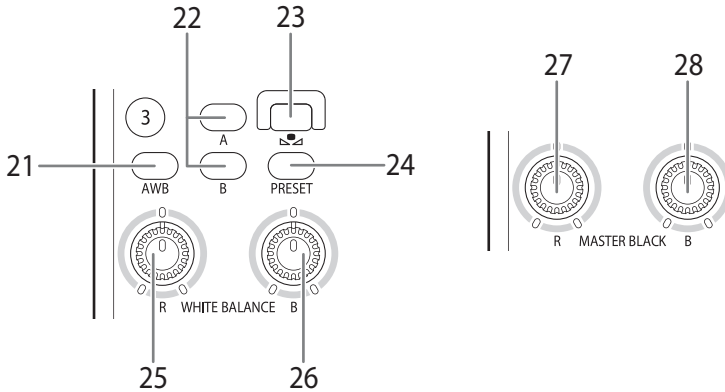
By default, the operating mode of the dial is set to relative mode (📖 19). You can change the direction in which you need to turn the dial and its sensitivity to your preference (📖 19).

## 20 SHARPNESS LEVEL dial

This dial adjusts the sharpness level.

By default, the operating mode of the dial is set to relative mode (📖 19). You can change the direction in which you need to turn the dial and its sensitivity to your preference (📖 19).

## White balance and master black controls



### 21 AWB (automatic white balance) button

Changes the white balance adjustment to automatic mode.

When the camera is set to automatic white balance, the button lights up in orange.

### 22 A / B (custom white balance A / B) buttons

Each of these buttons changes the white balance to one of the custom white balance settings stored as A or B, respectively.

When custom white balance A or B is selected, the corresponding button lights up in orange.

### 23 (set custom white balance) button

After selecting one of the custom white balance settings (A or B), press this button to have the camera register the custom white balance value.

When custom white balance A or B is selected and the white balance value has not yet been registered, the button will flash slowly in red. While the custom white balance is being adjusted, the button will flash quickly. When the procedure is correctly completed, the button's light will go out; if there is an error, it will flash slowly again.



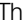
Now, when this button lights up (constantly on) in red, it indicates a fine adjustment to one of the preset white balance settings (see the following explanation).

## 24 PRESET (preset white balance) button

Changes the white balance to the preset white balance or color temperature setting that was selected on the camera.



While a preset white balance or the color temperature setting is selected, the button will light up in orange.

- **To fine-tune a preset white balance setting or set the color temperature**

1. While the PRESET button is lit up in orange, press the  button.  
The button will light up in red.
2. Fine-tune the preset settings (-9 to +9) or set the desired color temperature with the Up/Down buttons (navigation buttons).
3. Press the  button again to set the selected value.  
The  button's light will go out.

## 25 WHITE BALANCE R (R gain) dial

## 26 WHITE BALANCE B (B gain) dial

These dials adjust, respectively, the R gain and B gain of the white balance settings. By default, the operating mode of the dials is set to relative mode ( 19). You can change the direction in which you need to turn each dial and its sensitivity to your preference ( 19).



## NOTES

- Only one of the four buttons AWB, A, B and PRESET can be selected at the same time.

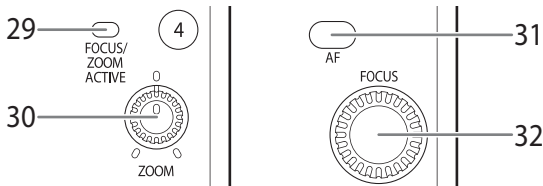
## 27 MASTER BLACK R dial

## 28 MASTER BLACK B dial

These dials adjust, respectively, the red and blue settings of the master black.

By default, the operating mode of the dials is set to relative mode ( 19). You can change the direction in which you need to turn each dial and its sensitivity to your preference ( 19).

## Zoom and focus controls



## 29 FOCUS/ZOOM ACTIVE indicator

This indicator lights up in green when the key lock mode has been set so only the zoom and focus controls of the remote controller are active.

## NOTES

- Immediately after selecting the Only zoom/focus controls active mode, this indicator may flash momentarily. During that time, the controls cannot be used; please wait until the indicator lights up permanently to use the remote controller.

### 30 ZOOM dial

This dial adjusts the zoom. The zoom speed is variable: the greater the rotation angle off the center, the faster the zoom will be. To end the zoom operation, return the dial to the center.

You can change the direction in which you need to turn the dial and its sensitivity to your preference (📖 19).

### 31 AF (autofocus) button

This button toggles the focus mode between manual focus and autofocus. For details about settings related to the camcorder's lens or a lens attached to the camera, please refer to the Instruction Manual of the camera used.

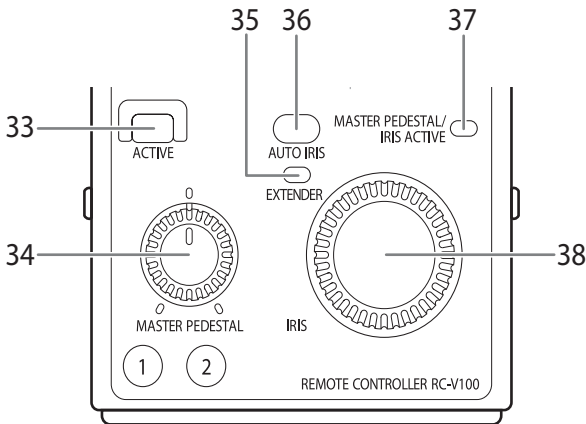
When the focus mode is set to autofocus, the button lights up in orange.

### 32 FOCUS dial

When the focus mode is set to manual focus, this dial adjusts the focus.

By default, the operating mode of the dial is set to relative mode (📖 19). You can change the direction in which you need to turn the dial and its sensitivity to your preference (📖 19).

## ACTIVE button, master pedestal and iris controls



### 33 ACTIVE button

This button locks all or part of the buttons and dials on the remote controller in order to prevent their operation by mistake. When all the controls are active, the button lights up in green.

By default, immediately after activating the remote controller, all the controls will be locked. Press the ACTIVE button repeatedly to change the key lock mode in the following order:

All controls locked → All controls active → Only master pedestal and iris controls active → Only zoom/focus controls active → All controls locked

### NOTES

- Immediately after selecting the All controls active mode and in other situations, the ACTIVE button may flash momentarily. During that time, the controls cannot be used; please wait until the button lights up in green to use the remote controller.



### 34 MASTER PEDESTAL dial

This dial adjusts the master pedestal level.

By default, the operating mode of the dial is set to relative mode (📖 19). You can change the direction in which you need to turn the dial and its sensitivity to your preference (📖 19).

### 35 EXTENDER (extender in use) indicator

This indicator lights up in orange when a lens extender is being used. This can be an EF Extender attached to the lens or the digital tele-converter function activated on the camera.

### 36 AUTO IRIS (automatic aperture) button

This button toggles the aperture adjustment mode between manual and automatic. For details about settings related to the camcorder's lens or a lens attached to the camera, please refer to the Instruction Manual of the camera used.

When the aperture mode is set to automatic, the button lights up in orange.

### 37 MASTER PEDESTAL/IRIS ACTIVE indicator

This indicator lights up in green when the key lock mode has been set so only the master pedestal and iris controls of the remote controller are active.



#### NOTES

- Immediately after selecting the Only master pedestal/iris controls active mode, this indicator may flash momentarily. During that time, the controls cannot be used; please wait until the indicator lights up permanently to use the remote controller.

### 38 IRIS dial

When the aperture mode is set to manual, this dial adjusts the aperture.

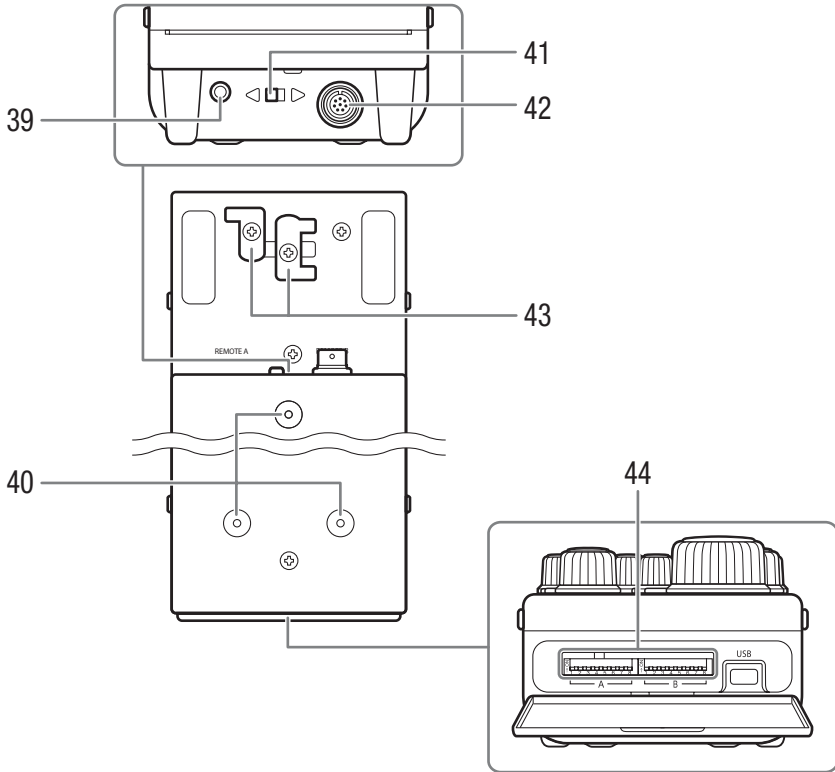
By default, the operating mode of the dial is set to relative mode (📖 19). You can change the direction in which you need to turn the dial and its sensitivity to your preference (📖 19).

### Assignable buttons (1 to 4)

The remote controller has 4 assignable buttons that can be assigned different functions using the camera's menu. Having the assignable buttons on the remote controller means you can conveniently access frequently used functions.

Only with a REMOTE B terminal connection: The buttons light up in orange.

## Back / Bottom



### 39 REMOTE A terminal (📖 6)

### 40 Sockets for mounting screws

Use these screw sockets and standard M3 screws to screw the remote controller to a control desk or other work surface.

### 41 Terminal selection switch

Determines the terminal that must be used to connect the remote controller to the camera (REMOTE A or REMOTE B).

### 42 REMOTE B terminal (📖 7)

### 43 Cable clamps (📖 6)

Pass the supplied remote cable through the cable clamps to help prevent it from being inadvertently disconnected from the REMOTE A terminal.

### 44 SET UP switches

With the setup switches you can customize various aspects of the remote controller's operation to your preference. For details, refer to *Customization* (📖 19).

# Customization

You can personalize various aspects of the remote controller's operation, including the brightness of buttons and indicators and the dials' direction, to your preference.

Micro switch	Category	Content	Micro Switch Position	
			ON	OFF
A-1	Dials' Direction	PAINT-group* dials' direction	Reverse	Normal
A-2		WB/MB-group** dials' direction	Reverse	Normal
A-3		ZOOM dial direction	Reverse	Normal
A-4		FOCUS dial direction	Reverse	Normal
A-5		MASTER PEDESTAL dial direction	Reverse	Normal
A-6		IRIS dial direction	Reverse	Normal
A-7	Dials' Sensitivity	IRIS dial sensitivity	Low	High
A-8		FOCUS dial sensitivity	Low	High
B-1		All other dials' sensitivity	Low	High
B-2	Dials' Mode	PAINT-group* dials' mode	Absolute	Relative
B-3		WB/MB-group** dials' mode	Absolute	Relative
B-4		MASTER PEDESTAL dial mode	Absolute	Relative
B-5	Buttons/Indicators	Lamps active	Off	On
B-6		Brightness	Dim	Bright
B-7	Sound	Operating sounds	Off	On
B-8	Reserved for service/maintenance		—	—

\* PAINT-group dials: KNEE POINT dial, KNEE SLOPE dial, BLACK GAMMA LEVEL dial, SHARPNESS LEVEL dial.

\*\* WB/MB group dials: WHITE BALANCE R dial, WHITE BALANCE B dial, MASTER BLACK R dial, MASTER BLACK B dial.

## About the dial modes

You can set the various dials' mode to absolute or relative.

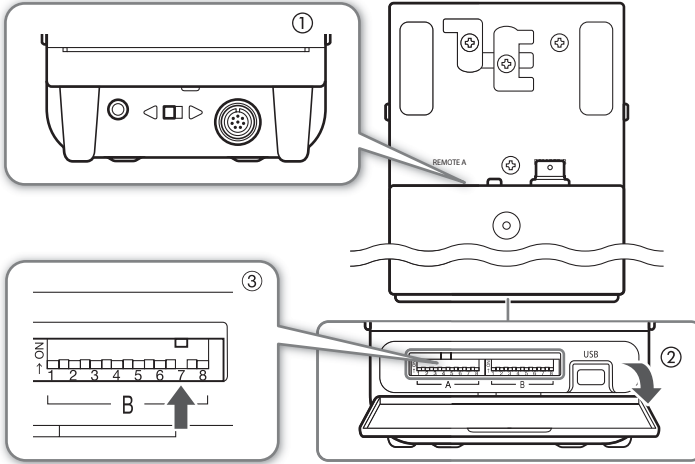
In relative mode, the value is adjusted according to the difference between the dial's position before the change and its position after the change. In relative mode, the position of the dial does not reflect the current value of the setting being adjusted.

In absolute mode, the position of the dial always corresponds to the current value of the setting being adjusted. The dial's center position (where it clicks) represents the setting's standard value and the dial's end positions correspond to the setting's maximum and minimum values.

### NOTES

- When a dial is set to relative mode, the adjustment range may be narrowed depending on the initial position of the dial when it was activated.

## To change the custom settings



1 Make sure the remote controller is off and not connected to any camera.

2 Open the cover of the SET UP switches.

3 Set the desired micro switch to the desired position.

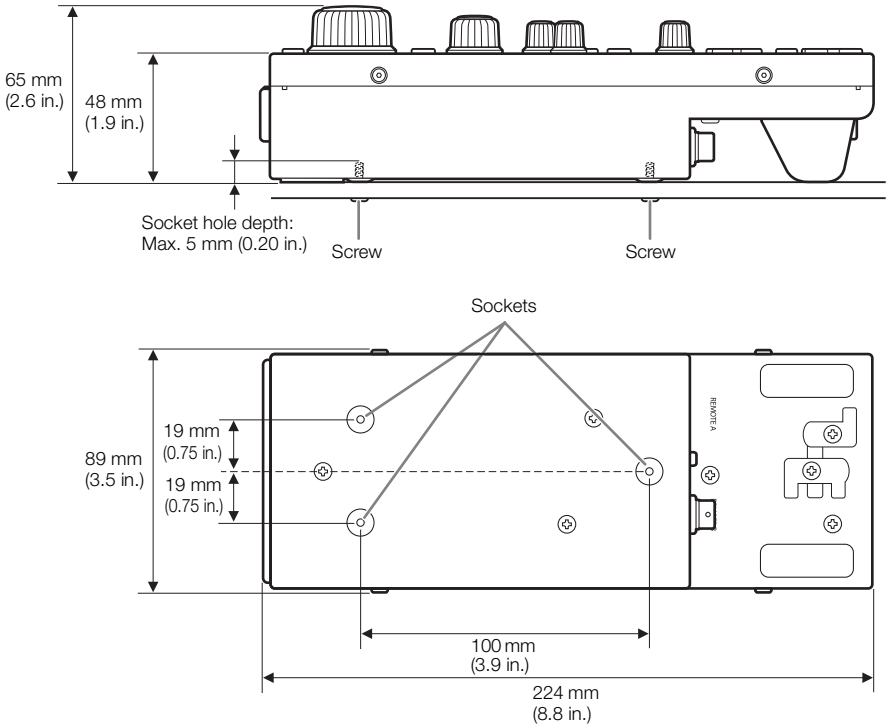
- Micro switches A-1 to A-8 are on the left and micro switches B-1 to B-8 are on the right.
- With a toothpick or a similar pointed tool, slide the micro switch down to set it OFF; slide it up to set it ON.

### ! IMPORTANT

- Make sure the remote controller is off before operating the SET UP switches.

# Specifications / Measurements

- REMOTE A Terminal:  $\varnothing$  3.5 mm stereo mini jack
- REMOTE B Terminal: Round 8-pin jack
- USB Terminal: mini-B, reserved for service/maintenance only
- Operating temperature: 0 – 40 °C (32 – 104 °F)
- Maximum external dimensions (W x H x D)  
approx. 89 x 224 x 65 mm (3.5 x 8.8 x 2.6 in.)
- Weight (excluding cable): approx. 630 g (1.4 lb.)



En

Weight and dimensions are approximate. Errors and omissions excepted.  
The information in this manual is verified as of September 2015. Subject to change without notice.

**USA**

## **CANON DIGITAL VIDEO PRODUCTS LIMITED WARRANTY FOR THE UNITED STATES**

The limited warranty set forth below is given by Canon U.S.A., Inc. ("Canon USA") with respect to Canon Digital Video Products (the "Products") purchased in the United States. Warranty coverage is subject to the country where the unit was purchased.

This limited warranty is only effective upon presentation of your Bill of Sale or other proof of purchase.

The Products are warranted under normal use, against defective materials or workmanship as follows:

Parts: Defective parts will be exchanged for new parts or comparable rebuilt parts for a period of ONE YEAR from the date of original purchase. Labor: For a period of ONE YEAR from the date of original purchase, labor will be provided free of charge by our factory service centers or designated service facilities located in the United States.

When returning Products under this warranty, you must pre-pay the shipping charges, and you must enclose the Bill of Sale or other proof of purchase with a complete explanation of the problem. During the ONE-YEAR warranty period, repairs will be made and the Products will be return-shipped to you free of charge. For repairs after the warranty period is over, you will be given an estimate of the cost of repair and an opportunity to approve or disapprove of the repair expense before it is incurred. If you approve, repairs will be made and the Products will be return-shipped to you. (shipping charges apply). If you disapprove, we will return-ship the Products at no charge to you.

**Non-Canon brand peripheral products and software which may be distributed with, or factory loaded on, the Products, are sold "AS IS" without warranty of any kind by Canon USA, including any implied warranty regarding merchantability or fitness for a particular purpose. The sole warranty with respect to such non-Canon brand items is given by the manufacturer or producer thereof. If the Products contain a hard disk drive or a flash memory, Canon USA recommends that data stored on that drive be duplicated or backed up to prevent its loss in the event of failure or other malfunction of such drive.**

Canon USA shall have no responsibility under this limited warranty for use of the Products in conjunction with incompatible peripheral products and incompatible software.

### **TO OBTAIN WARRANTY SERVICE**

You may obtain technical support for your Products as follows:

Internet support at [www.usa.canon.com/support](http://www.usa.canon.com/support) (E-mail support also available)

Telephone assistance from a Canon U.S.A. Customer Care representative free of charge during regular business hours at 1-800-OK-CANON (1-800-652-2666)

This Limited Warranty covers all defects encountered in normal use of the Products and does not apply in the following cases:

- A) Loss or damage to the Products due to abuse, mishandling, accident, improper maintenance, or failure to follow operating instructions;
- B) If the Products are defective as a result of leaking batteries, sand, dirt or water damage;
- C) If defects or damages are caused by the use of unauthorized parts or by service other than by Canon USA's factory service centers or authorized service facilities;

This Limited Warranty does not cover cabinet (exterior finish), video cassette tape, head cleanings, nor does it apply to Products purchased outside the United States. This warranty does not cover units sold to rental firms, military operations, hotels, schools, hospitals or for other commercial, industrial, or institutional applications. These uses are covered only by such specific warranty as Canon may issue with such sales. This Limited Warranty does not apply to accessories or consumables for the Products, which are sold "AS IS", without warranty of any kind by Canon USA. Please retain this warranty card and your Bill of Sale as a permanent record of your purchase. This card is most important in order to be sure you are contacted right away should there be a safety inspection, modification or products recall under applicable laws or regulations.

**NO IMPLIED WARRANTY, INCLUDING MERCHANTABILITY AND FITNESS FOR A PARTICULAR PURPOSE APPLIES TO THESE PRODUCTS AFTER THE APPLICABLE PERIOD OF EXPRESS WARRANTY OR GUARANTY, EXCEPT AS MENTIONED ABOVE, GIVEN BY ANY PERSON, FIRM OR CORPORATION WITH RESPECT TO THESE PRODUCTS SHALL BIND THE UNDERSIGNED**

(SOME STATES DO NOT ALLOW LIMITATIONS ON HOW LONG AN IMPLIED WARRANTY LASTS, SO THE ABOVE LIMITATION OR EXCLUSION MAY NOT APPLY TO YOU). CANON USA SHALL NOT BE LIABLE FOR LOSS OF REVENUES OR PROFITS, EXPENSE FOR SUBSTITUTE PRODUCTS OR SERVICE, STORAGE CHARGES, LOSS OR CORRUPTION OF DATA, INCLUDING WITHOUT LIMITATION, LOSS OR CORRUPTION OF DATA STORED ON THE PRODUCTS' HARD DRIVE OR FLASH MEMORY, OR ANY OTHER SPECIAL, INCIDENTAL OR CONSEQUENTIAL DAMAGES CAUSED BY THE USE, MISUSE OR INABILITY TO USE THE PRODUCTS, REGARDLESS OF THE LEGAL THEORY ON WHICH THE CLAIM IS BASED, AND EVEN IF CANON USA HAS BEEN ADVISED OF THE POSSIBILITY OF SUCH DAMAGES. NOR SHALL RECOVERY OF ANY KIND AGAINST CANON USA BE GREATER THAN THE PURCHASE PRICE OF THE PRODUCTS SOLD BY CANON USA AND CAUSING THE ALLEGED DAMAGE. WITHOUT LIMITING THE FOREGOING, YOU ASSUME ALL RISK AND LIABILITY FOR LOSS, DAMAGE OR INJURY TO YOU AND YOUR PROPERTY AND TO OTHERS AND THEIR PROPERTY ARISING OUT OF USE, MISUSE OR INABILITY TO USE THE PRODUCTS NOT CAUSED DIRECTLY BY THE NEGLIGENCE OF CANON USA. (SOME STATES DO NOT ALLOW THE EXCLUSION OR LIMITATION OF INCIDENTAL OR CONSEQUENTIAL DAMAGES, SO THE ABOVE LIMITATION MAY NOT APPLY TO YOU). THIS WARRANTY SHALL NOT EXTEND TO ANYONE OTHER THAN THE ORIGINAL PURCHASER OF THIS PRODUCTS OR THE PERSON FOR WHOM IT WAS PURCHASED AS A GIFT. This warranty gives you specific legal rights, and you may also have other rights which vary from state to state. CANON U.S.A., INC.

\*The battery pack packaged with the Products carries a separate ninety (90) day limited warranty.

## CANADA

### CANON DIGITAL VIDEO PRODUCTS LIMITED WARRANTY

The limited warranty set forth below is given by Canon Canada Inc. ("Canon Canada") with respect to Canon Digital Video Products (the "Products") purchased in Canada. This limited warranty is only effective upon presentation of a bill of sale or other proof of purchase for these Products to a Canon Service Facility when repairs are required. The Products are warranted under normal use, against defective materials or workmanship as follows: Parts: Defective parts will be exchanged for new parts or, at Canon Canada's option, comparable rebuilt parts for a period of one year from the date of original purchase. Labour: For a period of one year from the date of original purchase, labour will be provided free of charge by our Canon Service Facilities in Canada. This limited warranty covers all defects except where:

(a) The loss or damage to the products results from:

- i) accident, natural disaster, mishandling, abuse, neglect, unauthorized products modification or failure to follow instructions contained in the instruction manual;
- ii) the use of accessories, attachments, products, supplies, parts or devices with the Products that do not conform to Canon specifications or that cause abnormally frequent service problems;
- iii) repairs or services performed by any party other than a Canon Service Facility;
- iv) defective batteries or any exposure to water, sand or dirt;
- v) shipping (claim must be presented to the shipper);

(b) Any serial number on the video Products is altered or removed.

This limited warranty does not cover the cabinet (exterior finish) of the Products, media, nor does it apply to Products purchased outside Canada. If the Products contain a hard disk drive or a flash memory, Canon Canada recommends that data stored on that drive be duplicated or backed up to prevent its loss in the event of a failure or other malfunction of such drive.

### TO OBTAIN WARRANTY SERVICE

You may obtain technical support for your Products as follows:

Internet support for English at [www.canon.ca/english/cs](http://www.canon.ca/english/cs) (E-mail support also available)

Internet support for French at [www.canon.ca/francais/cs](http://www.canon.ca/francais/cs) (E-mail support also available)

Telephone assistance from a Canon Canada Customer Care representative free of charge during regular business hours at 1-800-OK-CANON (1-800-652-2666)

### LIMITATIONS

Except as otherwise required by applicable legislation, this warranty is in lieu of all other warranties, conditions, guarantees or representations, express or implied, statutory or otherwise, relative to the Products, including implied warranties or conditions of merchantability or fitness for a particular purpose. Canon Canada assumes no liability for special, consequential or incidental damages, loss or corruption of data including, without limitation, data stored on the hard disk drive or flash memory of the Products or loss that may arise, whether on account of negligence or otherwise, from the use, misuse or inability to use the Products (including loss of profit, revenue, media or enjoyment) or from failure to conform to any express or implied warranties, conditions, guarantees or representations. Any recovery under this limited warranty shall not exceed the purchase price of the Products. Canon Canada does not assume or authorize any other person to assume for Canon Canada any other liability with respect to these Products. This warranty does not extend to any person other than the original purchaser of the Products or the person for whom it was purchased as a gift and states your exclusive remedy.

### NOTICE TO CONSUMER

If you plan to take important videos or if the Products have not been used for some time, please check all functions with the instruction book before using it.





**Canon Inc.**

30-2, Shimomaruko 3-chome, Ohta-ku, Tokyo 146-8501, Japan

**Canon Europa N.V.**

Bovenkerkerweg 59, 1185 XB Amstelveen, The Netherlands

**ООО "Канон Рус" в Москве**

109028, Москва, Серебряническая наб, 29, этаж 8  
Бизнес-центр "Серебряный Город"

**ООО "Канон Рус" в Санкт-Петербурге**

191186, Санкт-Петербург, Волынский переулок, 3А, литер А,  
Бизнес-центр "Северная Столица"

原产地：请参照保修卡、产品包装箱或产品机身上的标示

进口商：佳能（中国）有限公司

进口商地址：北京市东城区金宝街89号金宝大厦15层 邮编100005



D I M 1 1 5 3 0 0 0

製品の使いかたについては、カメラの使用説明書の裏表紙に記載のキヤノンお客様相談センターにお問い合わせください。

For the contact information of your local Canon office, refer to the back cover of the camera's Instruction Manual.

Pour savoir comment contacter votre centre Canon local, reportez-vous à la couverture-dos du mode d'emploi de la caméra.

Kontaktinformationen zu Ihrer nächstgelegenen Canon Vertretung finden Sie auf der Rückseite der Kamera-Bedienungsanleitung.

Per conoscere il centro Canon più vicino, consultare il retro di copertina del manuale di istruzioni della videocamera.

Para la información de contacto de su oficina Canon local, consulte la contraportada del manual de instrucciones de la cámara.

Контактную информацию местного офиса Canon см. на задней обложке руководства по эксплуатации камеры.

Жергілікті Canon кеңсесінің байланыс ақпаратын пайдаланушы нұсқаулығының мұқабасының артқы бетінен қараңыз.

关于当地佳能办事处的联系信息，请参阅摄影机使用说明书的封底。

## Free Manuals Download Website

<http://myh66.com>

<http://usermanuals.us>

<http://www.somanuals.com>

<http://www.4manuals.cc>

<http://www.manual-lib.com>

<http://www.404manual.com>

<http://www.luxmanual.com>

<http://aubethermostatmanual.com>

Golf course search by state

<http://golfingnear.com>

Email search by domain

<http://emailbydomain.com>

Auto manuals search

<http://auto.somanuals.com>

TV manuals search

<http://tv.somanuals.com>