

**Canon**

# SELPHY CP1000

COMPACT PHOTO PRINTER

## Getting Started

**ENGLISH**

- Download the PDF manual and printer driver (📖2)
- Register your product online (📖15)
- Make sure you read this guide, including the “Safety Precautions” (📖3) section, before using the printer.
- Reading this guide will help you learn to use the printer properly.
- Store this guide safely so that you can use it in the future.

CEL-SV9VA210

## Package Contents

- SELPHY Printer
  - Power Cord
  - Cleaner Unit\*
  - Compact Power Adapter  
CA-CP200 B
  - Paper Cassette PCP-CP400
  - Dust Protection Cover  
(For Back)\*
  - Dust Protection Cover  
(For Front)\*
- Printed matter is also included.
- \* May not be included in some regions.

## PDF Manual and Printer Driver

The PDF manual and printer driver can be downloaded from the following URL.

<http://www.canon.com/icpd/>

- Connect to the Internet from a computer and access the above URL.
- Access the site for your country/region.
- Adobe Reader is required to view the PDF manual.
- Refer to the PDF manual for details of how to download and install the printer driver if printing from a computer.

## Ink and Paper (Sold Separately)

Before use, purchase a Color Ink / Paper Set.

Color Ink / Paper Set	Paper Size (Number of Possible Prints)
Color Ink / Paper Set RP-108 (Photo Paper) *1	Postcard (108)
Color Ink / Paper Set RP-1080V (Photo Paper) *1	Postcard (1080)
Color Ink / Paper Set KP-36IP (Postcard) *1	Postcard (36)
Color Ink / Paper Set KP-108IN (Photo Paper) *1	Postcard (108)
Color Ink / Paper Set KC-36IP *2	Card Size (36)
Color Ink / Label Set KC-18IF (Full-Page Label) *2	Card Size (18)
Color Ink / Label Set KC-18IL (8 Labels per Page) *2	Card Size (18)
Color Ink / Label Set KC-18IS (Square Labels) *2	Card Size (18)

\*1 Uses Paper Cassette PCP-CP400 (included with SELPHY).

\*2 Requires Paper Cassette PCC-CP400 (sold separately).

# Safety Precautions

- Before using the product, please ensure that you read the safety precautions described below. Always ensure that the product is used correctly.
- The safety precautions noted on the following pages are intended to prevent injuries to yourself and other persons, or damage to the equipment.
- Be sure to also check the guides included with any separately sold accessories you use.



## Warning

Denotes the possibility of serious injury or death.

- **Store this equipment out of the reach of children and infants.**

Mistakenly putting the power cord around a child's neck could result in asphyxiation.

- **Use only recommended power sources.**
- **Do not attempt to disassemble, alter, or apply heat to the product.**
- **Avoid dropping or subjecting the product to severe impacts.**
- **To avoid the risk of injury, do not touch the interior of the product if it has been dropped or otherwise damaged.**
- **Stop using the product immediately if it emits smoke, a strange smell, or otherwise behaves abnormally.**
- **Do not use organic solvents such as alcohol, benzene, or thinner to clean the product.**
- **Do not let the product come into contact with water (e.g. sea water) or other liquids.**
- **Do not allow liquids or foreign objects to enter the product.**

This could result in electrical shock or fire.

If liquid comes into contact with the product, unplug it from the outlet and consult your retailer or a Canon Customer Support Help Desk.

- **Do not touch the printer or the power plug during thunderstorms.**

This could result in electrical shock or fire. Immediately stop using the equipment and distance yourself from it.

- **Unplug the power cord periodically, and using a dry cloth, wipe away any dust or dirt that has collected on the plug, the exterior of the power outlet, and the surrounding area.**
- **Do not handle the power cord with wet hands.**
- **Do not use the equipment in a manner that exceeds the rated capacity of the electrical outlet or wiring accessories. Do not use if the power cord or plug are damaged, or not fully plugged into the outlet.**
- **Do not allow dirt or metal objects (such as pins or keys) to contact the terminals or plug.**
- **Do not cut, damage, alter, or place heavy items on the power cord.**

This could result in electrical shock or fire.

- **If a CD-ROM is supplied, do not play it in any CD player that does not support data CD-ROMs.**

It is possible to suffer hearing loss from listening with headphones to the loud sounds of a CD-ROM played on a music CD player. Additionally, playing the CD-ROM(s) in an audio CD player (music player) could damage the speakers.



## Caution

Denotes the possibility of injury.

- **Do not stick any part of your hand into the printer interior.**
  - **Place SELPHY in a safe location where people will not trip over the power cord.**
- Failure to do this may lead to injury or printer damage.

- **Avoid using, placing, or storing the product in the following places:**
  - **Places subject to direct sunlight**
  - **Places subject to temperatures above 40 °C (104 °F)**
  - **Humid or dusty places**
  - **Places subject to strong vibration**

This may cause overheating of or damage to the printer or adapter, which may result in electric shock, burns or other injury, or fire.

High temperature may deform the product or adapters.

## CAUTION

Denotes the possibility of damage to the equipment.

- **Unplug the product from the power outlet when you are not using it.**
- **Do not place anything, such as cloth, on top of the printer while in use.**

Leaving the unit plugged in for a long period of time may cause it to overheat and distort, resulting in fire.

- **Never reuse paper for printing, even if most of the paper is blank.**

Reusing paper may damage the printer if paper jams or the ink sheet adheres to the paper.

- **Do not unplug the printer while it is printing.**

If you accidentally turn the printer off while printing, restart it and wait until the paper is ejected. If paper jams and cannot be removed, contact your retailer or a Canon Customer Support Help Desk. Do not attempt to remove jammed paper by force, which may damage the printer.

- **Do not use the printer near motors or other devices that generate strong magnetic fields, or in dusty environments.**

This may damage the printer or cause malfunction.

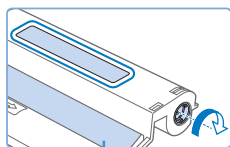
## Before Use

- Images printed with this product are to be used for personal enjoyment. Unauthorized printing of copyrighted material is prohibited.
- For information on printer warranty or Canon Customer Support, please refer to the warranty information provided with your printer User Manual Kit.
- Although the LCD monitor is produced under extremely high-precision manufacturing conditions and more than 99.99% of the pixels meet design specifications, in rare cases some pixels may be defective or may appear as red or black dots. This does not indicate damage. It also does not affect printed images.
- The LCD monitor may be covered with a thin plastic film for protection against scratches during shipment. If so, remove the film before use.

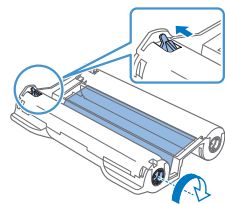
## Initial Preparations

Prepare for printing as follows. This example shows a Postcard-size Color Ink / Paper Set (sold separately), but the same steps are followed for other sizes.

### Preparing the Ink Cassette



Ink sheet



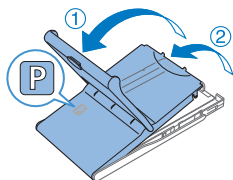
#### 1 Check the ink cassette and ink sheet.

- Holding the ink cassette without touching the ink sheet, check the size (such as “Postcard Size” or “Card Size”) to make sure it matches the size of paper you will print on.
- Make sure the ink sheet is taut. Loose ink sheets may tear when loaded. If the sheet is loose, turn the sprocket as shown.
- For an ink cassette that has a lock on the bottom, press the lock (as shown) to release it as you turn the sprocket to make the sheet taut.



- Do not hold the ink cassette with wet hands. Avoid touching the ink sheet, and avoid getting dust on it. Dirt or moisture may cause banding or affect print quality, tear ink sheets and prevent printing, or damage the printer.
- When turning the sprocket, turn it gently, only until the sheet is taut. Forcing the sprocket or overtightening it may tear ink sheets and prevent printing, or SELPHY may run out of ink before paper.
- Never reuse ink cassettes, which may damage the printer or cause malfunction.

## Preparing the Paper Cassette



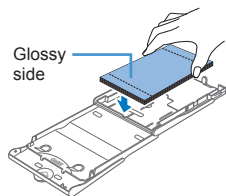
### 1 Check the paper size.

- Check the size on the paper cassette (such as "Postcard Size" or "Card Size") to make sure it matches the size of the ink cassette.

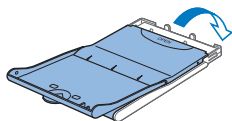
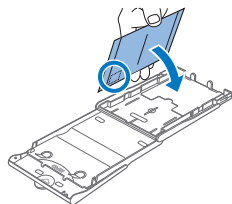
### 2 Open both covers.

- There are two layers of covers. First open the outer cover (①), and then the inner cover (②).

### 3 Load the paper.



- Load the paper in the paper cassette.
- The paper cassette holds up to 18 sheets. Loading 19 or more sheets may damage the printer or cause malfunction.
- Holding the paper as shown, load it with the glossy side up. (Do not touch the glossy side of the paper, which may affect print quality.)
- Remove any protective sheets from the paper, and load only paper into the cassette.
- When making postcard prints with space for a stamp, load the paper with the stamp area facing as shown.



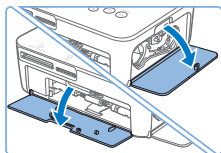
### 4 Close the inner cover.

- Close the inner cover firmly until it clicks into place.
- Leave the outer cover open when printing.



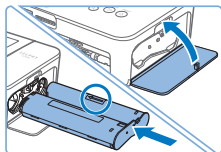
- This product is designed to achieve excellent performance when used with genuine Canon Color Ink / Paper Sets for SELPHY CP printers. Canon shall not be liable for any damage to this product caused by the use of non-genuine Canon Color Ink / Paper Sets for SELPHY CP printers.
- Never do the following. This may damage the printer or cause malfunction.
  - Loading paper upside-down, with the glossy and back sides reversed
  - Bending or separating paper at the perforations before printing
  - Using label paper whose upper label surface is peeling off or has been partially pulled up
  - Writing on paper before printing
  - Reusing paper, such as printing on blank areas
- Do not touch the springs on the paper cassette. Accidentally bending the springs may prevent efficient paper feeding.
- Note that one spring is attached in the center on the top of card-size paper cassettes.
- Avoid touching or rubbing the glossy, printing side of the paper. Do not handle paper with wet hands, and keep paper free of dust. Dirt or moisture may cause banding or affect print quality, or damage the printer.

## Loading the Cassettes



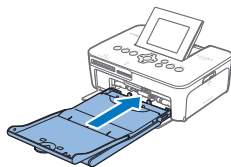
### 1 Open the covers.

- Open the ink and paper compartment covers.



### 2 Load the ink cassette.

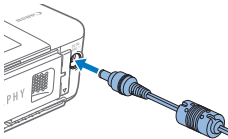
- Insert the ink cassette into the printer in the direction of the arrow on the cassette until it clicks into place.
- Close the ink cassette compartment cover.



### 3 Load the paper cassette.

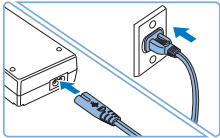
- Making sure the outer cover is open, insert the paper cassette all the way into the compartment.

## Connecting the Power



### 1 Plug the adapter cord into SELPHY.

- Insert the adapter plug fully into the power inlet on SELPHY.

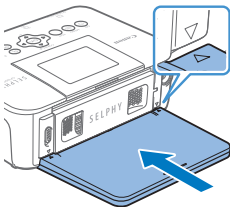


### 2 Connect the power cord.

- Connect the power cord to the compact power adapter, and then plug the other end into a power outlet.

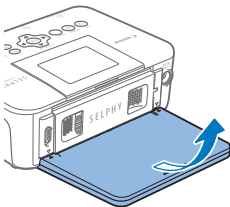
## Attaching the Dust Protection Covers

Attaching the dust protection covers will help keep paper clean and free of dust. Note that dust protection covers are not included in some regions.

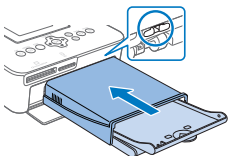


### Attaching and Removing the Back Cover

- Insert the back dust protection cover as shown to attach it.
- Insert the cover fully, leaving no gaps between it and the printer.



- To remove, first lift it upwards to release the tabs, and then pull it towards you.



### Attaching and Removing the Front Cover

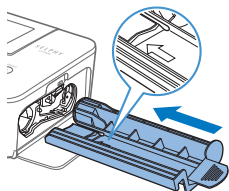
- Insert the tab of the front dust protection cover as shown.
- To remove, pull it towards you.

! It may not be possible to keep paper free of dust outdoors or in dusty environments. Be careful about where you use the printer.



## Regular Cleaning

If a cleaner unit is included, you may wish to perform regular cleaning to prevent dust or dirt from causing banding on prints. Note that the cleaner unit is not included in all regions.



### Clean the printer.

- Remove the ink cassette if it is in the printer.
- With the arrow side face-up, slide the cleaner unit all the way in and out of the ink cassette compartment 2 – 3 times.
- Store the cleaner unit in a bag or other container to keep it free of dust.



- Do not touch the white strip on the cleaner. This may affect cleaning performance.
- Do not use other types of cleaners, which may damage the printer.
- If prints are affected by banding even after you use the cleaner unit, contact a Canon Customer Support Help Desk.

## Choosing the Display Language



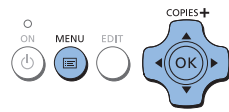
### 1 Turn on SELPHY.

- Press the <⏻> button until the screen on the left is displayed.
- To turn off SELPHY, hold the <⏻> button again until the screen changes.



### 2 Raise the screen (LCD monitor).

- Never force the screen up more than 45°, which may damage the printer or cause malfunction.



### 3 Access the setting screen.

- Press the <⏻> button.
- Press the <OK> button.

### 4 Access the language setting screen.


- Press the <▲><▼> buttons to select [Language], and then press the <OK> button.

### 5 Choose a language.


- Press the <▲><▼><◀><▶> buttons to select a language, and then press the <OK> button.

# Checking Supported Memory Cards

Supported memory cards are as follows.

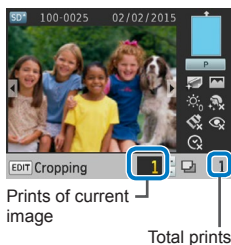
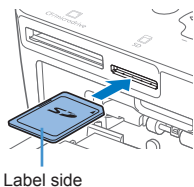
- SD Memory Card
- SDHC Memory Card
- SDXC Memory Card
- miniSD Memory Card\*
- miniSDHC Memory Card\*
- microSD Memory Card\*
- microSDHC Memory Card\*
- microSDXC Memory Card\*
- CF (CompactFlash) Card 
- Microdrive
- xD-Picture Card\*

\* Requires an optional dedicated adapter.

-  • For memory cards that require an adapter, always insert the card into the adapter before inserting the adapter into the card slot. If you mistakenly insert the memory card into the card slot without an adapter, you may not be able to remove the card from the printer.
- Use a memory card formatted with the device you shot the photos with. Images on cards formatted with a computer may not be recognized.

# Printing Images (Select & Print)

Select images and specify the number of prints as follows. Here, printing from an SD memory card is described as an example, but you can print from other memory cards with the same steps.



## 1 Turn on SELPHY and raise the screen.

- Follow steps 1 – 2 in “Choosing the Display Language” to turn on SELPHY and raise the screen.

## 2 Insert the memory card into the slot.

- Insert the memory card facing as shown until it clicks into place.
- To remove the card, push it in until it clicks, and then slowly release it.
- The image display screen used in the next step is displayed.

## 3 Choose an image.

- Press the <<>> buttons to select an image to print.
- To jump forward or back by five images, hold down the <<>> buttons.



#### 4 Specify the number of prints.

- Press the <▲><▼> buttons to specify the number of prints.
- To increase or decrease the quantity by five prints, hold down the <▲><▼> buttons.
- To print other images at the same time, repeat steps 3 – 4.



#### 5 Print.

- Press the <🖨️> button to start printing.
- While printing, paper passes in and out of the back of SELPHY several times. Do not touch the paper until printing is finished and the print is ejected onto the paper cassette.
- Do not allow 19 or more prints to collect in the ejection area on the paper cassette.
- To cancel printing in progress, always press the <↵> button.



- Never pull out the paper cassette, open the ink cassette compartment cover, or remove a memory card while printing or when you hear printer operation sounds immediately after it has been turned on. This may damage the printer.
- To cancel printing in progress, always press the <↵> button. Printing cannot be canceled by pressing the <🔌> button, and unplugging the printer may damage it.

## Various Printing Options

When using the features described here, you should always refer to the downloaded PDF manual and read any precautions.

### Printing All Images

Print all images on a memory card at once as follows.

- Press the <📄> button, and then select [Print All Images].

### Cropping Images

Print only selected areas of an image as follows.

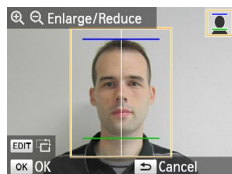
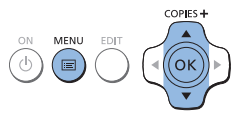
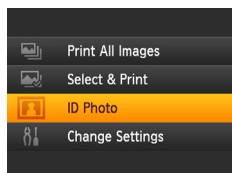
- Choose an image and then press the EDIT button to perform the setting.

## Printing ID Photos

Images can be printed for use in photo identification. You can choose from the following three sizes: [Custom], [Standard] and [Dual].

With [Custom] and [Standard], two different images can be printed on each sheet.

\* The dimensions of [Standard] conform to ICAO international standards.



### 1 Specify ID photo printing.

- Press the <MENU> button.
- Press the <▲><▼> buttons to select [ID Photo], and then press the <OK> button.

### 2 Specify the finished size of the photo.

- Press the <◀><▶> buttons to specify how the size is determined.
- [Custom]: Press the <▲><▼> buttons to select [Long Side], and then press the <◀><▶> buttons to specify the length. Specify the [Short Side] length, and then press the <OK> button.
- [Standard] or [Dual]: Check the indicated image size and press the <OK> button.

### 3 Choose an image.

- Press the <◀><▶> buttons to select an image, and then press the <▲> button. ✓ is shown in the lower right.
- To specify the cropping area, press the EDIT button in the image selection screen.
- With [Standard] and [Dual], to print a photo that conforms to standards for face size and position, adjust the crop frame so that one line is above the head and the other is below the chin.

### 4 Print.

- Print as described in step 5 of "Printing Images (Select & Print)".



- To display the ID Photo Settings screen by default when a memory card is inserted, and after printing, press the <img alt="Menu icon" data-bbox="115 100 135 115"/> button, choose [Change Settings] ► [ID Photo Priority], and then select [On].
- The photo may not be accepted as an official ID photo, depending on the intended purpose. For details, contact the institution that requires the photo.

## Printing with Different Settings

Images can be printed with a print finish, with or without borders, with different page layouts, and after correcting the images.

- Press the <img alt="Menu icon" data-bbox="260 115 280 130"/> button and select [Change Settings].

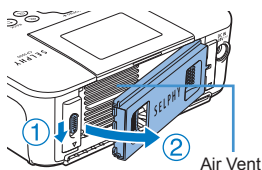


- In [Keep Print Settings], you can have SELPHY retain the [Borders] and [Page Layout] settings.

## Printing without a Power Outlet

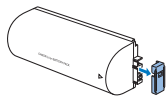
To print where no power outlet is available, use Battery Pack NB-CP2L (sold separately).

### Attaching the Battery Pack

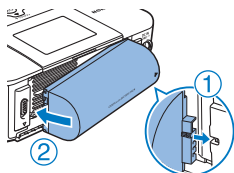


#### 1 Remove the battery pack mounting cover.

- With the switch held in the direction of the arrow (1), move the cover in the direction of the arrow (2) to remove.







#### 2 Remove the battery terminal cover.








#### 3 Attach the battery pack.

- Slide the terminal-end in the direction of the arrow (1) and insert the other end (2) until it clicks into place.

## Charging the Battery to Use SELPHY

- Once SELPHY is connected to a power outlet, charging starts and  blinks on the screen.
- When charging is finished in about four hours (at room temperature),  will no longer be displayed.
- SELPHY can be turned on for use even while  is blinking. However, charging will then stop. When power is turned off,  blinks and charging resumes.



- For battery precautions, refer to the battery user manual.
- When  is displayed, place SELPHY in an environment at operating temperature, and charge once it has adjusted to the ambient temperature.
- When  is displayed, press and hold any button other than <⏻> for 3 seconds or more to clear . To check if the battery is still charging, you can press any button other than <⏻>, and  will appear for around 10 seconds.
- When  is displayed in red, the battery has reached the end of its life. Please purchase a new battery.



- For battery precautions, refer to the battery user manual.

## Use of genuine Canon accessories and consumables is recommended.

This product is designed to achieve excellent performance when used with genuine Canon accessories and consumables.

Canon shall not be liable for any damage to this product and/or accidents such as fire, etc., caused by the malfunction of non-genuine Canon accessories (e.g., a leakage and/or explosion of a battery pack). Canon's commercial warranty (where offered) does not cover the damage caused by the use of any non-genuine accessories or consumables.

### CAUTION

RISK OF EXPLOSION IF BATTERY IS REPLACED BY AN INCORRECT TYPE.  
DISPOSE OF USED BATTERIES ACCORDING TO LOCAL REGULATION.

### Connecting to a Computer

To connect SELPHY to a computer, use a USB cable (sold separately, maximum 2.5 m [8.2 ft.]) that has a Mini-B connector on the SELPHY end.

## ■ Trademarks and Licenses

- The CF5 logo is a trademark of CompactFlash Association.
- The SDXC logo is a trademark of SD-3C, LLC.
- All other trademarks are the property of their respective owners.
- This device incorporates exFAT technology licensed from Microsoft.
- Portions of the code used in the firmware are based in part on the work of the Independent JPEG Group.

## Online product registration

Take a few minutes to register your product online at <http://www.canon-europe.com/manual-register> and you'll get:

- **Your own secure Canon account and login**

With access to Canon services such as irista and The Gallery.

- **The latest product and promotion information direct to your inbox**

Subscribe to our emails and be the first to get news about products, events and promotions as well as practical advice, hints, tips and tutorials.

- **Information personalised to you**

Tell us a little bit more about you and your Canon products so that we can tailor the information we send you.

Only for European Union and EEA (Norway, Iceland and Liechtenstein)



These symbols indicate that this product is not to be disposed of with your household waste, according to the WEEE Directive (2012/19/EU), the Battery Directive (2006/66/EC) and/or national legislation implementing those Directives.

If a chemical symbol is printed beneath the symbol shown above, in accordance with the Battery Directive, this indicates that a heavy metal (Hg = Mercury, Cd = Cadmium, Pb = Lead) is present in this

battery or accumulator at a concentration above an applicable threshold specified in the Battery Directive.

This product should be handed over to a designated collection point, e.g., on an authorized one-for-one basis when you buy a new similar product or to an authorized collection site for recycling waste electrical and electronic equipment (EEE) and batteries and accumulators. Improper handling of this type of waste could have a possible impact on the environment and human health due to potentially hazardous substances that are generally associated with EEE. Your cooperation in the correct disposal of this product will contribute to the effective usage of natural resources.

For more information about the recycling of this product, please contact your local city office, waste authority, approved scheme or your household waste disposal service or visit [www.canon-europe.com/weee](http://www.canon-europe.com/weee), or [www.canon-europe.com/battery](http://www.canon-europe.com/battery).



## Free Manuals Download Website

<http://myh66.com>

<http://usermanuals.us>

<http://www.somanuals.com>

<http://www.4manuals.cc>

<http://www.manual-lib.com>

<http://www.404manual.com>

<http://www.luxmanual.com>

<http://aubethermostatmanual.com>

Golf course search by state

<http://golfingnear.com>

Email search by domain

<http://emailbydomain.com>

Auto manuals search

<http://auto.somanuals.com>

TV manuals search

<http://tv.somanuals.com>