



SELPHY CP730/CP720

COMPACT PHOTO PRINTER

Printing Guide

Basic to Advanced Printing

Thank you for purchasing a SELPHY Compact Photo Printer. You can start to print immediately with the items in your package. There are three easy steps: Unpack the contents, prepare them and print.



1 Unpack
▶ p. 2

2 Prepare
▶ p. 3

3 Print
▶ p. 5

Enjoy a Multitude of Functions
▶ p. 8

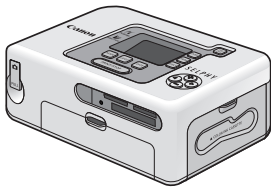
Installing the PDF Manual
▶ p. 11

Boundless Possibilities
▶ p. 13

Troubleshooting
▶ p. 16

Unpack

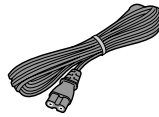
In this step, you will unpack the printer and arrange the items you will need to prepare the printer and print.



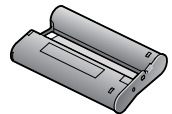
Main Printer Unit



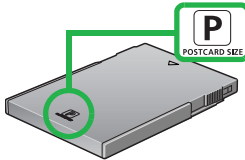
Compact Power Adapter



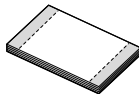
Power Cord



Starter Ink Cassette (Postcard Size)



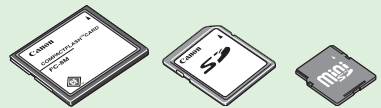
Postcard Size Paper Cassette



Starter Paper Pack (Postcard size: 100 x 148 mm (4 x 6 in.))



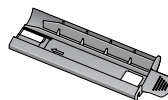
Separately Sold Accessories



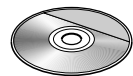
You will need a memory card with images on it that has been removed from the camera.

Depending on the region, L size items may be supplied with the printer.

Although you will not use them when following the steps in this guide, be sure the following items are also in your package.



Cleaner



CD-ROM: Compact Photo Printer Solution Disk

Printer User Guide for More Detailed Information

The supplied CD-ROM contains the *Printer User Guide*, an electronic manual. Refer to this manual for detailed procedures or troubleshooting tips.

You can install the Printer User Guide onto your computer (p. 11). It is also installed with the Easy Install option.

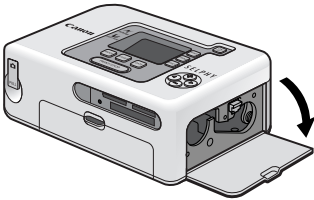
This product is designed to achieve excellent performance when used with genuine Canon accessories. Canon shall not be liable for any damage to this product and/or accidents such as fire, etc., caused by the malfunction of non-genuine Canon accessories (e.g., a leakage and/or explosion of a battery pack). Please note that this warranty does not apply to repairs arising out of the malfunction of non-genuine Canon accessories, although you may request such repairs on a chargeable basis.

2 Prepare

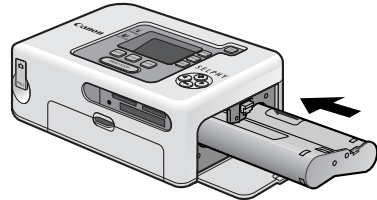
In this step you will insert the ink and paper cassettes to prepare for printing. Although these illustrations show the CP730 model, the procedures apply equally to the CP720 model.

1. Install the ink cassette.

- ▶ Open the ink cassette compartment cover on the printer.

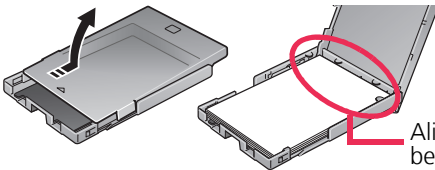


- ▶ Insert the starter ink cassette into the printer until it clicks firmly into place and close the cover.

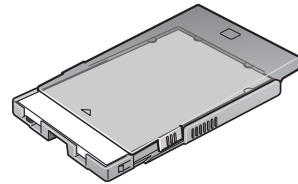


2. Place paper into the paper cassette.

- ▶ Slide the lid of the paper cassette and open it upward, as shown. Next, place the paper in the cassette with the shiny side upward. Try not to touch the shiny side of the paper.
- ▶ Close the lid but do not slide it forward. You should see a portion of the paper through the opening.

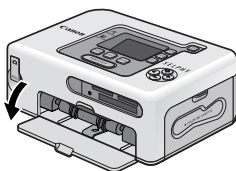


Align the paper beneath the tabs.



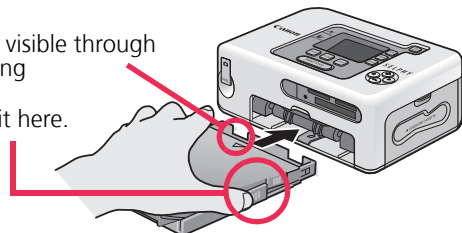
3. Install the paper cassette into the printer.

- ▶ Open the paper cassette slot cover.
- ▶ Insert the paper cassette all the way into its slot.



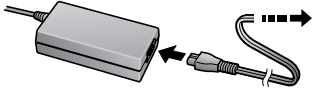
Paper visible through opening

Hold it here.

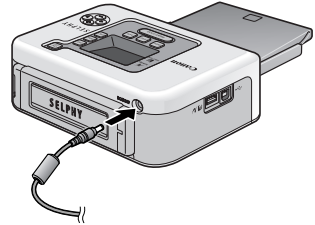


4. Attach the power cord.

▶ Plug the power cord into the compact power adapter and then into a power outlet.



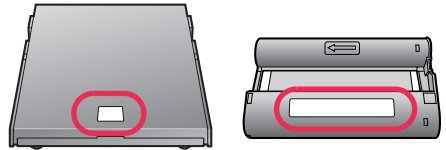
▶ Attach the compact power adapter connector to the printer's DC IN terminal.



Caution!

Mismatching Paper Stocks, Paper Cassettes and Ink Cassettes

The printer will not print correctly if you mismatch paper stocks to paper cassettes or ink cassettes. The matching paper size is written where shown on paper cassettes and ink cassettes.



Wait!

Do not connect the printer to the computer until after you have installed the printer driver.

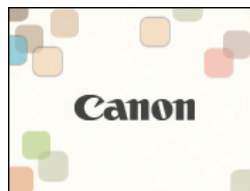
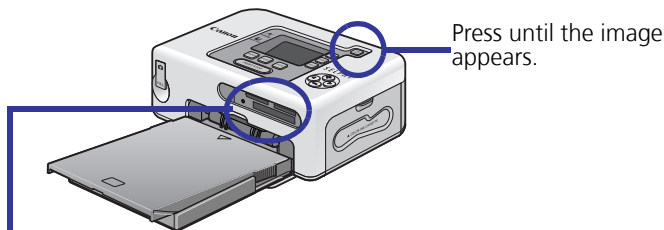
?
Can I Use Standard Printer Paper and Postcards?

No. Always use the genuine Canon brand "Color Ink/Paper Sets" included in SELPHY-specific paper sets.

3 Print

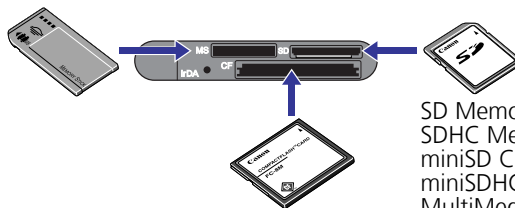
In this step you will insert a memory card with images into the printer, and print.

1. Press the power button until the start-up image (shown right) displays on the LCD monitor.



2. Insert the memory card into the appropriate card slot.
With the label side upward, insert the memory card fully.

Memory Stick PRO Duo
Memory Stick Duo
Memory Stick PRO
Memory Stick

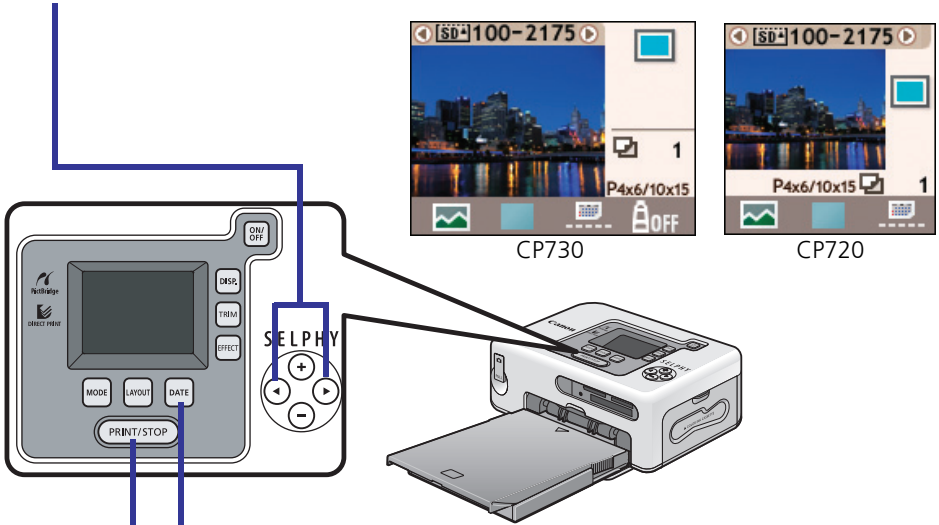


CompactFlash Card
Microdrive
xD-Picture Card (a separate adapter*
is required)



SD Memory Card
SDHC Memory Card
miniSD Card
miniSDHC Card
MultiMediaCard
RS-MMC

* Purchase a CompactFlash Card
Adapter for xD-Picture Cards
separately.

3. Press ◀ or ▶ to select an image to print.



4. Press [DATE] and select whether or not to include the shooting date.

When the bottom right of the monitor shows , the date does not print. When it shows , the date will print in the [month/day/year] format.

5. Press **PRINT/STOP**.

The printer will start. The paper will pass in and out four times. Do not pull on or force the paper during this process.

After confirming that the image has printed, remove the memory card. To turn the printer off, press the power button again for a moment.

?
How many prints can the starter ink cassette print?

It can make five prints, the same number as the supplied starter paper sheets. A symbol similar to the one at the right will appear on the LCD monitor when the ink runs out. Please exchange the ink cassette with a new one. Note that dye-sublimation thermal transfer photo printers such as the SELPHY series cannot print any more prints than those noted on the color ink/paper set packages. They use a technology very different from that used in ink jet printers.

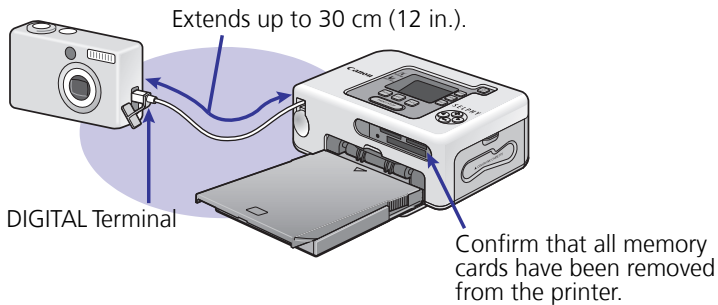


You Can Also Connect the Camera to Print

If your Canon digital camera has a  (Print/Share) button on it, you can connect the camera to the printer for easy printing. If your camera does not have a  (Print/Share) button, please check its user manual.

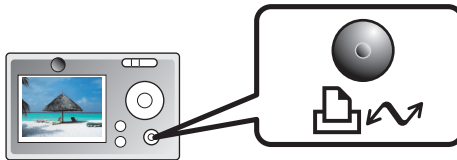
1. Pull the cable out of the printer and attach it to the camera's DIGITAL terminal.

If the connector on the cable does not fit your camera's terminal, use the USB cable supplied with your camera.



2. Press the power button until the start-up image displays on the LCD monitor.

3. Select an image on the camera's LCD monitor and press the (Print/Share) button.



Other camera brands that are PictBridge compliant can also be connected for direct printing.

Enjoy a Multitude of Functions

This section introduces the numerous functions that make printing fun.

MODE Button

This button sets the printing mode.



Single

Prints one copy of the displayed image.



Select

Prints the specified number of copies of the selected images.

Printing Using the Select Mode

1. Press \leftarrow or \rightarrow to select an image to print.
2. Select the number of prints using the \oplus or \ominus button.
3. Repeat Steps 1 and 2 as required for successive images.
4. When you finish, press **PRINT/STOP**.



All

Prints one copy of each image.



DPOF

Prints according to the DPOF settings set using the camera. See the user guide included with your camera for instructions regarding DPOF settings.



LAYOUT Button

This button sets the print layout.



Borderless



Bordered



2 Images



4 Images



8 Images



Index



The image number also prints.

Power Button

DISP. (Display) Button

Press this button to display the image at a larger size. Press it again to restore it to its original size.

DATE Button

This button sets the date imprint that can be added to images.



No Date



Year/Month/Day



Month/Day/Year



Day/Month/Year

Print/Stop Button

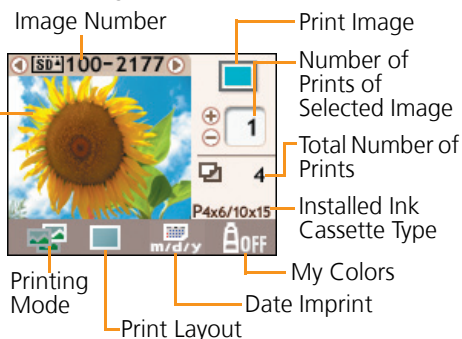
Press this button to start printing. Pressing this button while printing is in progress stops it. It still consumes one print's worth of ink even when printing is stopped.

LCD Monitor

It displays the memory card images and current settings information.

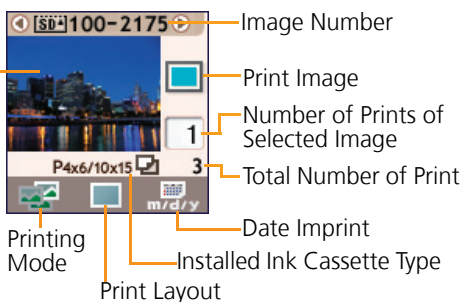
CP730

Selected Image



CP720

Selected Image

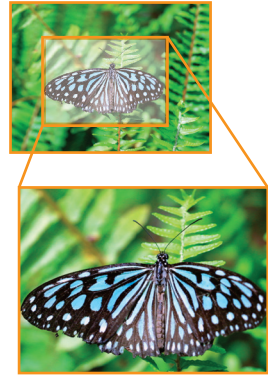


TRIM. Button (CP730 only)

This button starts the trimming mode, which lets you enlarge a portion of an image for printing.

How to Select the Trimming Area

1. Press the TRIM. button, followed by the DISP. button.
2. Press the ⊕ and ⊖ buttons to adjust the print area size, and the ⬅ and ➡ buttons to rotate the print area frame 90 degrees.
3. Press the DISP. button again, followed by the ⊕, ⊖, ⬅ and ➡ buttons to move the print area as desired.
4. Press the TRIM. button to put the settings into effect.



EFFECT Button (CP730 only)

This button sets the My Colors function.

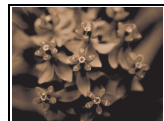
 Off



 B/W



 Sepia



 Vivid



 Neutral



Installing the PDF Manual

The *Printer User Guide* (PDF manual) explains information such as details about the printer, troubleshooting suggestions and instructions for connecting the printer to a computer. Use the following procedures to install the *Printer User Guide* on your computer.

Windows

1. Place the supplied CD-ROM into the CD-ROM drive.

If the CD-ROM is already in the drive and the panel shown below has not opened, take the CD-ROM out and re-insert it into the drive.


2. Click [Custom Installation] in the Application Software/User Guide section, followed by [OK].



3. Select [Printer User Guide] and click [Next]. Follow the onscreen instructions.

Remove the CD-ROM when the installation is complete.

Macintosh

1. Place the supplied CD-ROM into the CD-ROM drive and double-click the  (CPSD Installer) icon in the CD-ROM window.
2. Click [Install] in the Application Software/User Guide section, followed by [Custom Installation] and [Next].



3. Click [Agree], followed by [Next].
4. Select [Printer User Guide] and click [Next]. Follow the onscreen instructions.
Remove the CD-ROM when the installation is complete.

- The *Printer User Guide* is also installed by selecting the [Easy Installation] option.
- The Adobe Reader or Adobe Acrobat Reader program is required to view the *Printer User Guide*.

Boundless Possibilities

Supplied Items

Depending on the region, L size items may be supplied with the printer.

- A** Postcard Size Paper Cassette
- B** Postcard Size Paper Package (5 sheets)
- C** Ink Cassette for Postcard Size

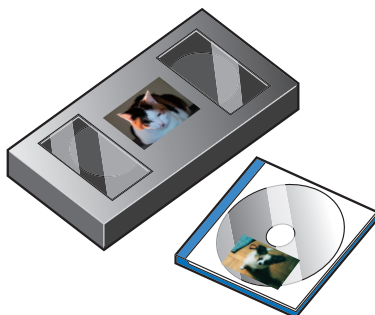
Separately Sold Items*

*Some items are not sold in some regions.

- D** "Color Ink/Paper Set KP-36IP" Postcard Size 36-Sheet Package
- E** "Color Ink/Paper Set KP-72IP" Postcard Size 72-Sheet Package
- F** "Color Ink/Paper Set KP-108IP" Postcard Size 108-Sheet Package
- G** "Color Ink/Paper Set KC-36IP" Card Size 36-Sheet Package
- H** "Color Ink/Paper Set KW-24IP" Wide Size 24-Sheet Package
- I** "Color Ink/Full-Sized Label Set KC-18IF" Card Size 18-Sheet Package
- J** "Color Ink/Label Set KC-18IL" Card Size 18-Sheet Package
- K** "Color Ink/Paper Set KL-36IP" L Size 36-Sheet Package
- L** Postcard Size Paper Cassette (PCP-CP100)
- M** Card Size Paper Cassette (PCC-CP100)
- N** Wide Size Paper Cassette (PCW-CP100)
- O** L Size Paper Cassette (PCL-CP100)

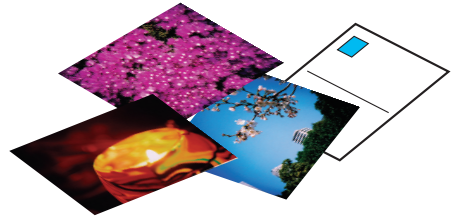
Use Label Sheets to Make Organizing, Arranging and Classifying Fun

Required Items: **I** + **M**



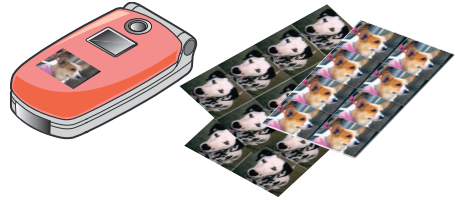
Present Your Memories Attractively in Photo Frames or Albums or create Postcards with Postcard Size Sheets

Required Items: **A** + **B**
(Add Options **D**, **E** or **F**)

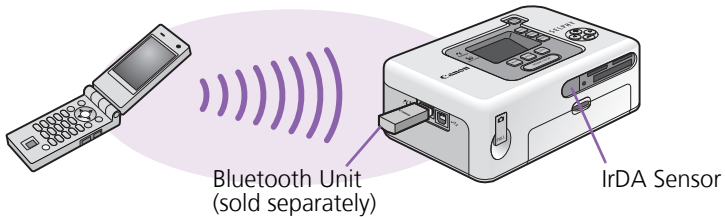


Create Unique Stickers with 8-Label Sheets

Required Items: **J** + **M**



The CP730 can print without a cable connection if you have a mobile phone that supports the IrDA (infrared data transmission) protocol. You can also print wirelessly with the Bluetooth Unit (BU-20) if you use mobile phones and PDAs that support the Bluetooth protocol.



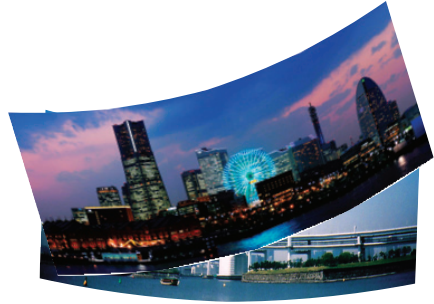
Carry Your Favorite Photos Everywhere with Card Size Sheets

Required Items: **G** + **M**



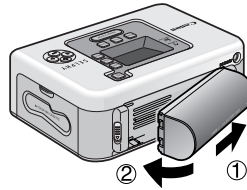
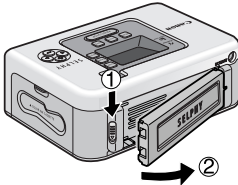
Use the Wide Size Sheets for the Grand Appeal of Panorama Shots

Required Items: **H** + **N**

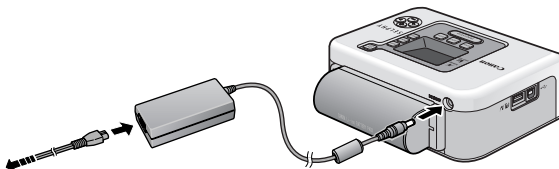


Use the CP730's Separately Sold Battery Pack to Print Postcards on Location

1. Open the battery cover.
2. Attach the battery.



3. Charge the battery (approx. 2.5 hours from a depleted to fully charged state).



To a power outlet.

Troubleshooting

Solutions for when you cannot print as expected, or think the printer is not operating properly.

?
Power will not turn on...

Did you press and hold the power button until the start-up image displayed? Check the compact power adapter, the main printer unit and the power cord to ensure that they are correctly connected.

?
Cannot print...

Have you run out of ink sheets? Replace the ink cassette (the starter ink cassette can be used to print 5 sheets).

?
I have extra paper but the ink ran out...

Some ink may be consumed even if you don't print if you tug on the ink sheets or needlessly turn the power on/off repeatedly. Also, the ink can be wasted if you take out the ink cassette when the paper sheets run out during a multiple print run. Remove the paper cassette and replenish the paper without removing the ink cassettes.

?
Cannot set the mode, print layout, date imprint and print number as expected...

Some categories cannot be selected or are disabled with certain combinations of print mode, print layout, date imprint and print numbers.

?
Cannot print cleanly...

Did you set SELPHY-specific paper in the cassette with the shiny side upward as required? If the ink sheet becomes dusty, blow it clean with a blower brush or similar device. If narrow stripes appear, remove the ink cassette and use the supplied cleaner two or three times to clean the interior of the printer.

Printer power button is blinking red...

Try turning the power off and on.

Images will not appear even with a memory card inserted...

Confirm that the memory card is inserted all the way in. Also note that images may not be detected in folders not based on standard file and folder conventions for digital cameras, the Design rule for Camera File system (Exif compliant).

Experiencing numerous paper jams...

Place 18 or fewer sheets of paper in the paper cassette (12 or fewer for Wide Size sheets). Moreover, do not place more than 10 sheets of printed paper on top of the paper cassette.

List of Error Symbols



Cannot display image



Ink cassette error



No images on memory card



Low battery (CP730 only)



Cannot read image



Communication error



No paper



Connection broken



Paper jam



Other error



No ink

Safety Precautions

- Use this equipment correctly according to the following precautions to avoid the risk of injury, fire, electrical shock, malfunctions and other hazards
- Please also read the "Safety Precautions" and "Handling Precautions" sections of the electronic manual (Printer User Guide) contained on the supplied CD-ROM.



WARNINGS

- Do not play the supplied CD-ROM(s) in any CD player that does not support data CD-ROMs. Playing the CD-ROM(s) in an audio CD player (music player) could damage the speakers. It is also possible to suffer from hearing loss from listening with headphones to the loud sounds of a CD-ROM played on a music CD player.
 - Store the equipment in a place where it cannot be reached by children.
 - Do not disassemble or modify the devices.
 - If the devices are dropped or the casing becomes damaged, do not continue operation.
 - If the devices emit smoke or a burning odor, or show other signs of significant malfunction, immediately unplug the power cord from the power outlet.
 - Do not allow water or other liquids to enter the interior of the equipment. If the equipment is subjected to water droplets or damp salty air, gently wipe it with a soft, absorbent cloth.
 - Do not insert or drop metallic objects or flammable substances into the equipment interior. Immediately switch off the printer power and remove the power cord from the electrical outlet before attempting to remove the object or substance. (If powering it by battery, remove the battery before removal.)
 - Do not touch metal parts of the devices or the power plug during thunderstorms. Immediately stop using the equipment and distance yourself from it.
 - Do not use flammable solvents such as alcohol, benzene, or paint thinner to clean the devices.
 - Do not rest heavy objects on the power cord or plug, pull on it with excessive force or damage it.
 - Do not use a power source (AC adapter, battery) that is not specified for the equipment.
 - Remove the power cord on a regular periodic basis and wipe away the dust and dirt that collects on the plug, the exterior of the power outlet and the surrounding area.
 - Do not handle the power cord if your hands are wet.
-
- No part of this guide may be reproduced, transmitted, transcribed, stored in a retrieval system, or translated into any language in any form, by any means, without the prior written permission of Canon.
 - While every effort has been made to ensure that the information contained in this guide is accurate and complete, no liability can be accepted for any errors or omissions. Canon reserves the right to change the specifications of the hardware and software described herein at any time without prior notice.
 - Canon makes no warranties for damages resulting from corrupted or lost data due to a mistaken operation or malfunction of the camera, the printer, the software, the memory cards, personal computers, peripheral devices, or use of non-Canon memory cards.
 - The SDHC logo and miniSDHC logo are trademarks.

FCC Notice

(Printer, Model CD1023/CD1024)

FC Tested To Comply
With FCC Standards
FOR HOME OR OFFICE USE

This device complies with Part 15 of the FCC Rules. Operation is subject to the following two conditions;

- (1) this device may not cause harmful interference, and
- (2) this device must accept any interference received, including interference that may cause undesired operation.

Note: This equipment has been tested and found to comply with the limits for Class B digital devices, pursuant to Part 15 of the FCC rules. These limits are designed to provide reasonable protection against harmful interference in a residential installation. This equipment generates, uses and can radiate radio frequency energy and, if not installed and used in accordance with the instructions, may cause harmful interference to radio communications. However, there is no guarantee that interference will not occur in a particular installation. If this equipment does cause harmful interference to radio or television reception, which can be determined by turning the equipment off and on, the user is encouraged to try to correct the interference by one or more of the following measures:

- Reorient or relocate the receiving antenna.
- Increase the separation between the equipment and receiver.
- Connect the equipment into an outlet on a circuit different from that to which the receiver is connected.
- Consult the dealer or an experienced radio/TV technician for help.

The cable with the ferrite core provided with the digital camera must be used with this equipment in order to comply with Class B limits in Subpart B of Part 15 of the FCC rules.

Do not make any changes or modifications to the equipment unless otherwise specified in the manual. If such changes or modifications should be made, you could be required to stop operation of the equipment.

Canon U.S.A., Inc.

One Canon Plaza, Lake Success, NY 11042, U.S.A.
Tel No. (516) 328-5600

Canadian Radio Interference Regulations

This Class B digital apparatus complies with Canadian ICES-003.

Réglementation canadienne sur les interférences radio

Cet appareil numérique de la classe B est conforme à la norme NMB-003 du Canada.

Canon

Free Manuals Download Website

<http://myh66.com>

<http://usermanuals.us>

<http://www.somanuals.com>

<http://www.4manuals.cc>

<http://www.manual-lib.com>

<http://www.404manual.com>

<http://www.luxmanual.com>

<http://aubethermostatmanual.com>

Golf course search by state

<http://golfingnear.com>

Email search by domain

<http://emailbydomain.com>

Auto manuals search

<http://auto.somanuals.com>

TV manuals search

<http://tv.somanuals.com>