

Congratulations on your selection of the PB48 Patch Bay System. It is a versatile and easy to use signal router and patch point system. When used in and out of the studio, it will become an indispensable part of your sound system.

RECEIVING INSPECTION

INSPECT FOR ANY DAMAGE which may have occurred during shipping. If any damage is found, please notify the shipping company & CARVIN.

SAVE THE CARTON & ALL PACKING MATERIALS. In the event you have to re-ship your unit, always use the original carton and packing material. This will provide the best possible protection during shipment. CARVIN and the shipping company are not liable for any damage caused by improper packing.

SAVE YOUR INVOICE. It will be required for warranty service if needed in the future.

SHIPMENT SHORTAGE. If you find items missing, they may have been shipped separately. Please allow several days for the rest of your order to arrive before inquiring.

RECORD THE SERIAL NUMBER on the enclosed warranty card or below on this manual for your records. Keep your portion of the card and return the portion with your name and comments to us.

For your records, you may wish to record the following information.

Serial No. _____ Invoice Date _____

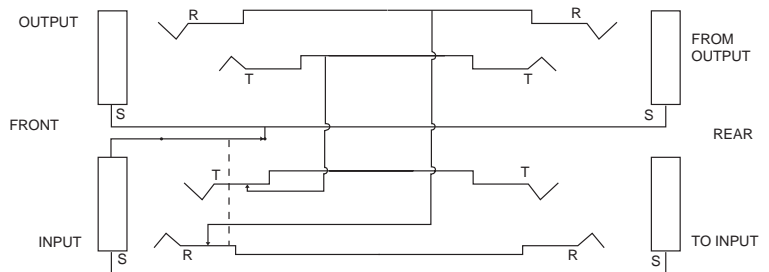
PATCH BAY USE

The PB48 features two closed circuit 1/4" patch points (pairs) on the front panel and two single contact 1/4" connection (pairs) on the rear panel. A signal patched into one of the rear panel jacks is routed through the respective two front panel connections and subsequently returned to the second rear panel jack (as an output). The most common use for this patch configuration is for effects "sends and receives" on a console. It allows the "send" signal from the console to be routed through the patch bay and returned to the console via the second rear output jack. This allows access to the send and return patch points of the console using the front panel patch points of the PB48.

Another use would be to route a channel "direct output" through the PB48 to a respective track on a multitrack recorder. This allows in-line signal processing to be patched (including compressors, noise gates, limiters, etc.) for each track as well as quick access to re-route signals to alternate tracks.

PATCH BAY SUMMARY

This patch bay has 48 jacks on the front for patching, and 48 jacks on the back to connect the inputs and outputs of your gear. As shipped from the factory, the up-and-down pairs of jacks on the front are wired together in a manner called "half normalled". Each jack pair is built on its own rugged epoxy-glass circuit board and can be easily configured as not normalled if desired (no signal connection between upper and lower jack). Remove the mounting nuts from the lower jacks on the back of the patch bay and remove the circuit board 180° so the bottom rear jack becomes the upper front jack. Replace the circuit board, remembering to put the mounting nut back on and tighten. You're done, with no soldering or cutting wires. This patch bay is fitted with 1/4" TRS (Tip-Ring-Sleeve) jacks. They can be used with any standard 1/4" phone plug for balanced, stereo, or unbalanced operation.



SPECIFICATIONS

- Dimensions: 19" x 1.73" x 2.68"
- Weight: 2.30 LBS
- Jack Contact Material: Solid Nickel Silver

CARVIN

12340 World Trade Drive, San Diego, CA 92128
 (619) 487-1600 (800) 854-2235
 www.carvin.com

Free Manuals Download Website

<http://myh66.com>

<http://usermanuals.us>

<http://www.somanuals.com>

<http://www.4manuals.cc>

<http://www.manual-lib.com>

<http://www.404manual.com>

<http://www.luxmanual.com>

<http://aubethermostatmanual.com>

Golf course search by state

<http://golfingnear.com>

Email search by domain

<http://emailbydomain.com>

Auto manuals search

<http://auto.somanuals.com>

TV manuals search

<http://tv.somanuals.com>