



Cisco TelePresence Touch 10

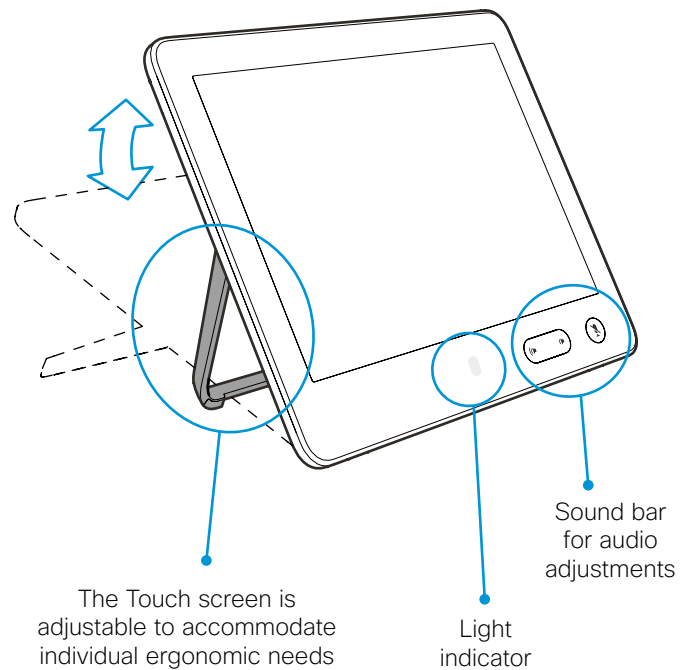
INSTALLATION GUIDE

Cisco TelePresence Touch 10

The Cisco TelePresence Touch 10 is used with the Cisco TelePresence endpoints.

Box contents

- Cisco TelePresence Touch 10



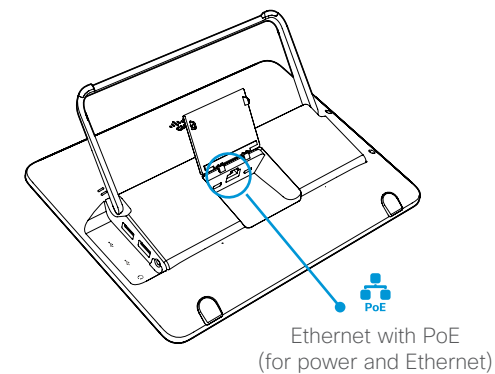
Connecting the cables

The Cisco TelePresence Touch 10 is powered through Power over Ethernet (PoE). On the MX700 and MX800 endpoints it is powered direct from the endpoint. If your endpoint or network infrastructure^[1] does not support PoE, you can add this by using a midspan PoE injector^[2].

The Ethernet cable (not included) must be rated for PoE use. Open the lid and connect the Ethernet cable to the Touch10, and connect the other end:

- to a PoE enabled port (📶) on the TelePresence endpoint
- or, to a PoE enabled network port (📶^[3])
- or, use a midspan PoE injector^[2]

NOTE: Please refer to the online endpoint documentation to verify the connectivity recommendation.



[1] The PoE source (network switch) must be located in the same building as the Cisco TelePresence Touch 10. Otherwise the Cisco Aironet Power Injector must be used. The Ethernet cable (Cat5) can be up to 100 m (330 ft).

[2] The Cisco Aironet Power Injector (CTS-PWR-AIR-INJ5) can be ordered separately.

[3] Remote pairing is available on selected products.

Remote pairing

Connect Touch 10

Connect the Touch 10 to a network socket.

Option A: When the network socket does not provide Power over Ethernet (PoE) you will need a mid-span PoE injector to power Touch 10.

Option B: The network socket provides Power over Ethernet (PoE).

Touch 10 set-up

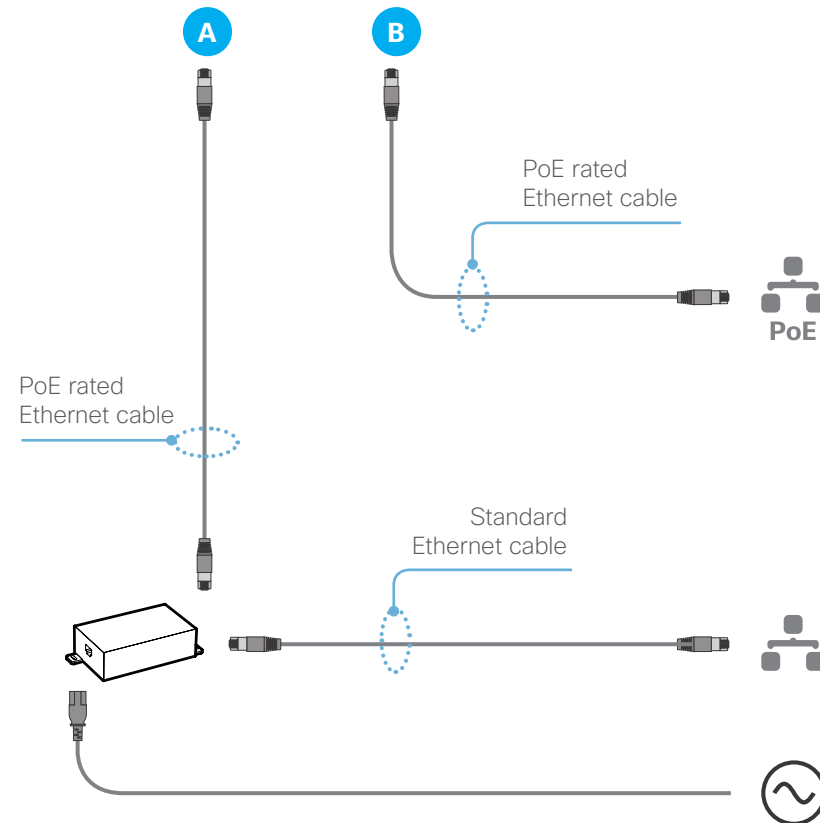
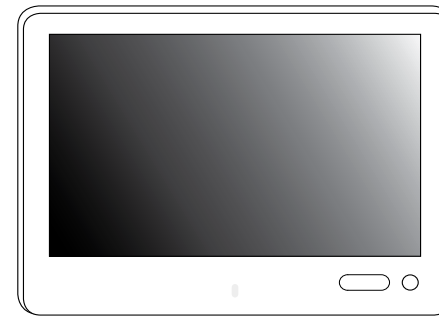
Once Touch 10 is connected to power, the set-up procedure begins. Follow the instructions on screen.

When the *Select codec to pair with* dialog appears, note the following:

- A list of codecs signalling that they are available for pairing will show up in the dialog. Tap the name of the codec you want to pair to followed by *Start Pairing*.
- If your codec does not appear in the list of available codecs, you can pair the devices manually. Click *Select codec manually...*, enter the IP address or host name of the codec, and tap *Start Pairing*.
- You have to enter the codec's administrator username and password for the pairing to commence.

If Touch 10 needs software upgrade, new software will be downloaded from the codec and installed on the unit automatically as part of the set-up procedure. Touch 10 restarts after the upgrade.

You can verify that Touch 10 is successfully connected to the codec by checking that the codec address is displayed in the top banner.



Direct pairing

Connect Touch 10

Connect the Touch 10 to the network socket on the codec or endpoint.

Option C: Note that the SX Series do not provide Power over Ethernet (PoE), so you need a mid-span PoE injector to power Touch 10.

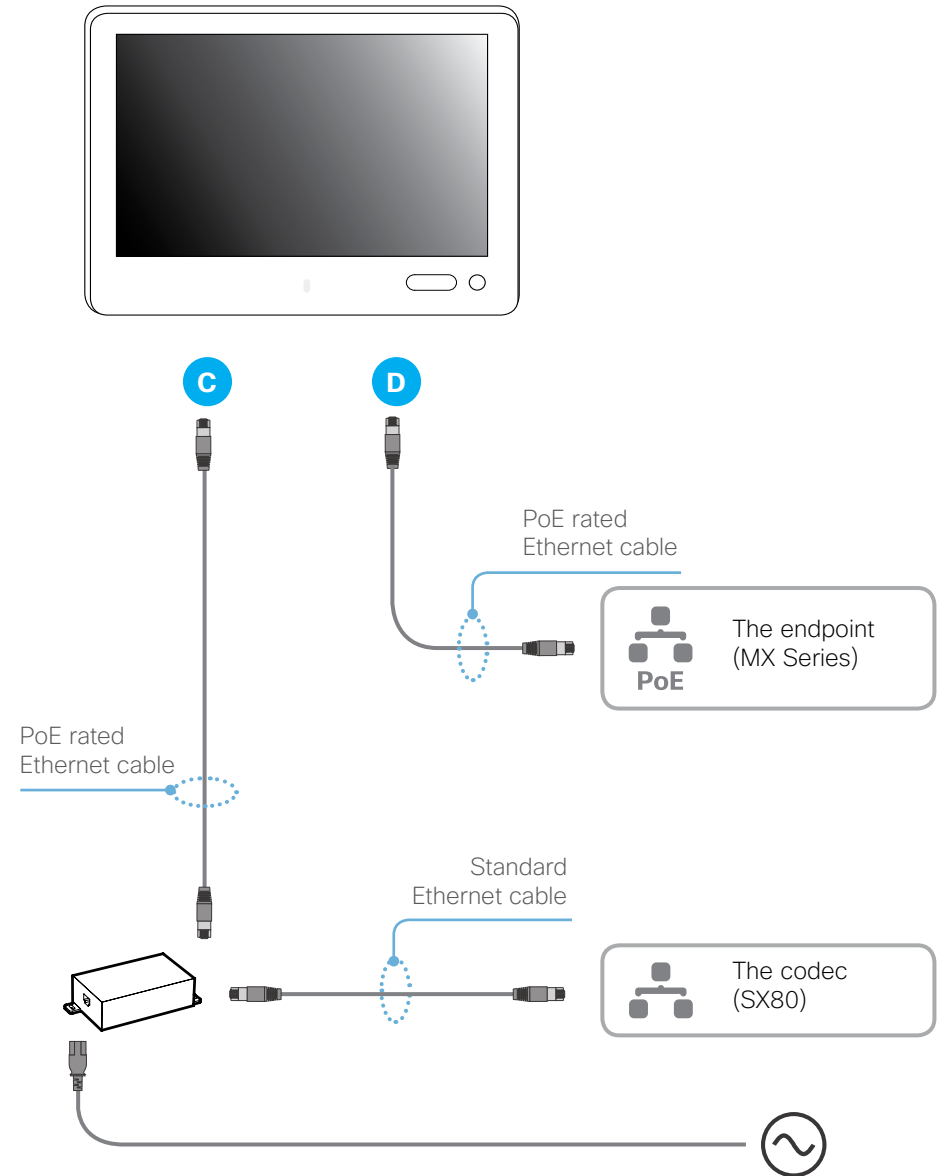
Option D: The MX Series (MX200G2, MX300G2, MX700, MX800) provides Power over Ethernet (PoE).

Touch 10 set-up

Once Touch 10 is connected to power, the set-up procedure begins. Follow the instructions on screen.

If Touch 10 needs software upgrade, new software will be downloaded from the codec and installed on the unit automatically as part of the set-up procedure. Touch 10 restarts after the upgrade.

You can verify that Touch 10 is successfully connected to the codec by checking that the codec address is displayed in the top banner.



Additional product support

User documentation

For more information about Cisco TelePresence Touch 10, see the user documentation that is available on our web site: <http://www.cisco.com/go/touch-docs>

If asked to sign in or to configure your system, you may want to consult the user documentation for the TelePresence endpoint.

- SX Series: <http://www.cisco.com/go/sx-docs>
- MX Series: <http://www.cisco.com/go/mx-docs>

Regulatory Compliance and Safety Information for Touch 10 is available on our web site.

Go to <http://www.cisco.com/go/touch-docs> and navigate to *Install and Upgrade Guides*.

Support

For support, go to: <http://www.cisco.com/support>



On our web site you can find an overview of the worldwide Cisco contacts.

Go to: <http://www.cisco.com/web/siteassets/contacts>

Corporate Headquarters
Cisco Systems, Inc.
170 West Tasman Dr.
San Jose, CA 95134 USA

Cisco and the Cisco logo are trademarks or registered trademarks of Cisco and/or its affiliates in the U.S. and other countries. To view a list of Cisco trademarks, go to this URL: www.cisco.com/go/trademarks. Third-party trademarks mentioned are the property of their respective owners. The use of the word partner does not imply a partnership relationship between Cisco and any other company. (1110R)

Some illustrations used in this guide may differ from the actual product.

Free Manuals Download Website

<http://myh66.com>

<http://usermanuals.us>

<http://www.somanuals.com>

<http://www.4manuals.cc>

<http://www.manual-lib.com>

<http://www.404manual.com>

<http://www.luxmanual.com>

<http://aubethermostatmanual.com>

Golf course search by state

<http://golfingnear.com>

Email search by domain

<http://emailbydomain.com>

Auto manuals search

<http://auto.somanuals.com>

TV manuals search

<http://tv.somanuals.com>