

Operation Instructions

CRAFTSMAN

Digital Tire Gauge

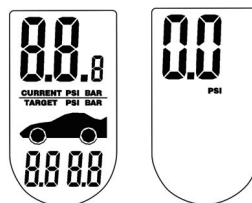
Model No.28-23020
Specifications
Range: 5-99PSI/0.4-6.80BAR
Resolution: 0.5PSI/0.05BAR

One Year Full Warranty

If this Craftsman product fails due to a defect in material or workmanship within one year from the date of purchase, return it to any Sears store or other Craftsman outlet in the United States for free replacement. This warranty gives you specific legal rights, and you may also have other rights which vary from state to state. Sears, Roebuck and Co., Hoffman Estates, IL 60179

A. Pressure measurement without Preset Goal

1.Press SET; all digits light up, then 0.0 appears. Default unit of measure is PSI.



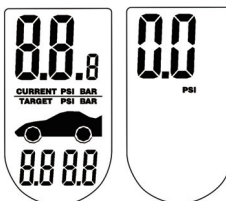
2.Push nozzle of gauge onto tire valve.
3.Hold gauge on valve stem until you hear a beep when the pressure reading displays and locks. See figures to right.



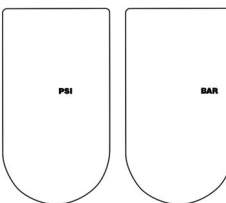
4.Promptly remove gauge from valve stem.
5.The pressure reading stays on the display for 10 seconds (deviation about +/-3 sec).
6.Display goes to 0.0.
7.Gauge turns off in 10 seconds (deviation about +/-3 sec)after 0.0 appears.

B. Target Setting

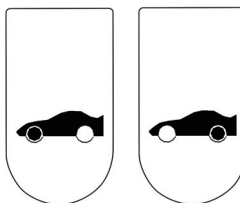
1.Press SET to power on the gauge; all digits light up, then 0.0 appears on the display.



2.Press and hold SET for 3 seconds to enter setting mode. The unit "PSI" or "BAR" appears and blinks. Press up or down to switch between PSI and BAR. Then press SET to confirm.



3.Default front tire or rear tire lights up and blinks. Press up/down to switch between front and rear and press SET to confirm.



4.Press up/down to change target number and press SET to confirm.



5.The second tire lights up. Press up/down to change target number and press SET to confirm. Note: For target numbers, refer to vehicle manufacturer suggested tire pressure levels as listed in the vehicle owner's manual or the door jam of the vehicle.



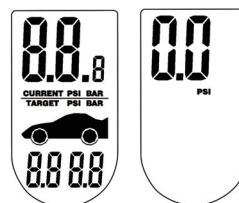
6.Unit of measurement and target numbers for both tires lights up and stays for about 2 seconds.



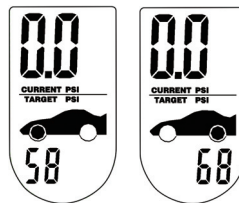
7.Display goes to "0.0". Note: The target numbers are only remainders of vehicle manufacturer's suggested tire pressure levels; they cannot be used to test for or indicate actual pressure in tires.

C. Pressure Measurement with Preset Target

1.Press SET to power on the gauge; all digits light up and 0.0 appears on the display.



2.Press up/down to choose between front and rear tires. Front or rear tire lights up in display.

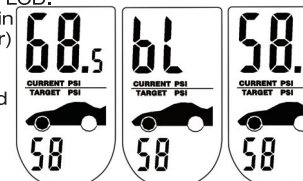


3.Push nozzle of gauge onto tire valve.

4.Hold gauge on valve stem until reading displays and locks;you will hear a beep when the pressure reading is within +/- 0.5psi or 0.05 bar of target goal.



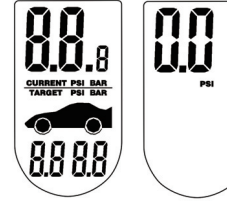
5.If the pressure reading is higher than preset goal, press and hold bleed button to release air. The LCD will flash "bL". Release bleed button to get the actual pressure in tire from LCD. If the reading is within +/-0.5psi (+/- 0.05bar) of target goal,beep will sound; if not, press and hold bleed button to release more air.



6.The pressure reading stays on the display for 10 seconds (deviation about +/-3 sec).
7.Display goes to 0.0.
8.Gauge turns off in 10 seconds (deviation about +/-3 sec) after 0.0 appears.
9.Before gauge turns off, follow instructions in Sections A and C to measure pressure of the second tire.

D. Pressure measurement without Preset Goal with bleed function

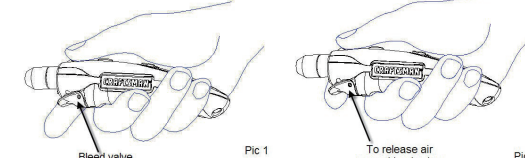
1.Press SET; all digits light up, then 0.0 appear. Default unit of measure is PSI. See figure below.



2.Push nozzle of gauge onto tire valve.
3.Hold gauge on valve stem until you hear a beep when the pressure reading displays and locks. See figure to right.



4.If the pressure reading is higher than expected, you can press and hold bleed button to release air.



5.The LCD will flash "bL".



6.Release bleed button to get the actual pressure in tire from LCD; beep will sound when reading locks; if necessary, press and hold bleed button to release more air.



7.When desired pressure level is reached remove gauge from valve stem.
8.The pressure reading stays on the display for 10 seconds (deviation about +/-3 sec).
9.Display goes to 0.0.
10.Gauge turns off in 10 seconds (deviation about +/-3 sec) after 0.0 appears.

E. White LED Flashlight

To turn on the light, press and hold the light button
To turn off the light, release the light button.

F. Replacing the Battery

To replace the battery, unscrew the battery cover and remove the old batteries; insert two new CR2032 batteries; replace battery cover and screw on tightly.

Battery Notes:

- Replace all batteries of a set at the same time
- Clean the battery contacts and also those of the device prior to battery installation.
- Ensure the batteries are installed correctly with regard to polarity(+ and -)
- Remove batteries from equipment which is not to be used for an extended period of time

FCC warnings:

This device complies with Part15 of the FCC Rules. Operation is subject to the following two conditions: (1) this device may not cause harmful interference, and (2) this device must accept any interference received, including interference that may cause undesired operation. NOTE: This equipment has been tested and found to comply with the limits for a Class B digital device, pursuant to Part 15 of the FCC Rules.

These limits are designed to provide reasonable protection against harmful interference in a residential installation. This equipment generates uses and can radiate radio frequency energy and, if not installed and used in accordance with the instructions, may cause harmful interference to radio communications. However, there is no guarantee that interference will not occur in a particular installation. If this equipment does cause harmful interference to radio or television reception which can be determined by turning the equipment off and on, the user is encouraged to try to correct the interference by one or more of the following measures:

- Reorient or relocate the receiving antenna.
- Increase the separation between the equipment and receiver.
- Connect the equipment into an outlet on a circuit different from that to which the receiver is connected
- Consult the dealer or an experienced radio/TV technician for help.

Caution: Any changes or modifications not expressly approved by the manufacturer of this product and the party responsible for compliance could void the user's authority to operate the equipment.

Free Manuals Download Website

<http://myh66.com>

<http://usermanuals.us>

<http://www.somanuals.com>

<http://www.4manuals.cc>

<http://www.manual-lib.com>

<http://www.404manual.com>

<http://www.luxmanual.com>

<http://aubethermostatmanual.com>

Golf course search by state

<http://golfingnear.com>

Email search by domain

<http://emailbydomain.com>

Auto manuals search

<http://auto.somanuals.com>

TV manuals search

<http://tv.somanuals.com>