

COSTWAY®

USER MANUAL

**High Pressure Cleaner
EP23454BL**



HIGH PRESSURE WASHER

EN

EP23454BL

TROUBLESHOOTING

Disconnect the machine from the power source before making any repair. To avoid unnecessary disappointments, you should check the following before contacting the service organization:

Symptom	Cause	Recommended action
Machine refuses to start	Machine not plugged in Defective socket Defective extension cable	Plug in machine Try another socket. Try without the extension cable.
Fluctuating pressure	Pump sucking air Valves dirty, worn out or stuck Pump seals worn out	Check that hoses and connections are airtight. Clean and replace or refer to local distributor Clean and replace or refer to local distributor
Machine stops	Incorrect mains voltage Thermal cut-out activated Nozzle partially blocked	Check that the mains voltage corresponds to specification on the model tag. Leave the washer for 5 minutes to cool down. Clean the nozzle
Machine pulsating	Air in inlet hose Inadequate supply of mains water Nozzle partially blocked Water filter blocked Hose kinked	Pump allow machine to run with open trigger until regular working pressure resumes. Check that the water supply corresponds to specifications required Avoid using long, thin hoses (min. 1/2") Clean the nozzle Clean the filter Straighten out hose.
Machine often starts and stops by itself	Pump/spray gun is leaking .	Contact your nearest Service
Machine starts, but no water comes out	Pump/hoses or accessory frozen No water supply Water filter blocked Nozzle blocked	Wait for pump/hoses or accessory to thaw. Connect water supply and turn on. Clean the filter Clean the nozzle

STORAGE

The machine should be stored in a frost-free room!

Pump, hose and accessories should always be emptied of water prior to storing as follows:

Stop the machine and detach water hose and accessory.

Restart the machine and activate the trigger. Let the machine run until no more water runs through the spray gun.

3. Stop the machine, unplug and wind up hose and cable.

4. Place spray handle, nozzles and other accessories in the holders of the machine. Should the machine by mistake be frozen, it will be necessary to check it for damage.

NEVER START-UP A FROZEN MACHINE.

Frost damages are not covered by the guarantee!

Winding up of electric cable and high pressure hose

To avoid accidents, the electric cable and the high pressure hose should always be wound carefully up around the handle. Wind up the cable on the appropriate hook.

Storage of accessories

The lance and the nozzles can be stored on the pressure washer.

MAINTENANCE

WARNING! Always disconnect the electrical plug from the socket prior to maintenance or cleaning. To ensure a long and problem free working life, please take the following advice:

- Wash out water hose, high pressure hose, spray lance and accessories before mounting.
- Clean the connectors of dust and sand.
- Rinse the detergent spraying attachment after use.
- Clean the nozzles.

Any repair should always be made in an authorized workshop with original spare parts.

If the supply cord is damaged, it must be replaced by the manufacturer, its service agent or similarly qualified persons in order to avoid a hazard.

CLEANING OF WATER INLET FILTER

Clean the water inlet filter regularly once a month or more frequently according to use.

Unscrew quick connector and take water inlet out.

Check that it is intact before re-mounting it.

The inlet filter must always be fitted inside the water inlet pipe to filter out sand, limestone and other impurities, as they will damage the pump valves.

CAUTION: Failure to fit the filter will invalidate the guarantee.

Cleaning of nozzle

A clogging up in the nozzle causes a pump pressure which is too high. This is why cleaning is required immediately.

1. Stop the machine and disconnect the nozzle.
2. Clean the nozzle.

IMPORTANT:

The cleaning tool (11) should only be used when the nozzle is detached! (See Fig. N)

3. Flush the nozzle backwards with water.

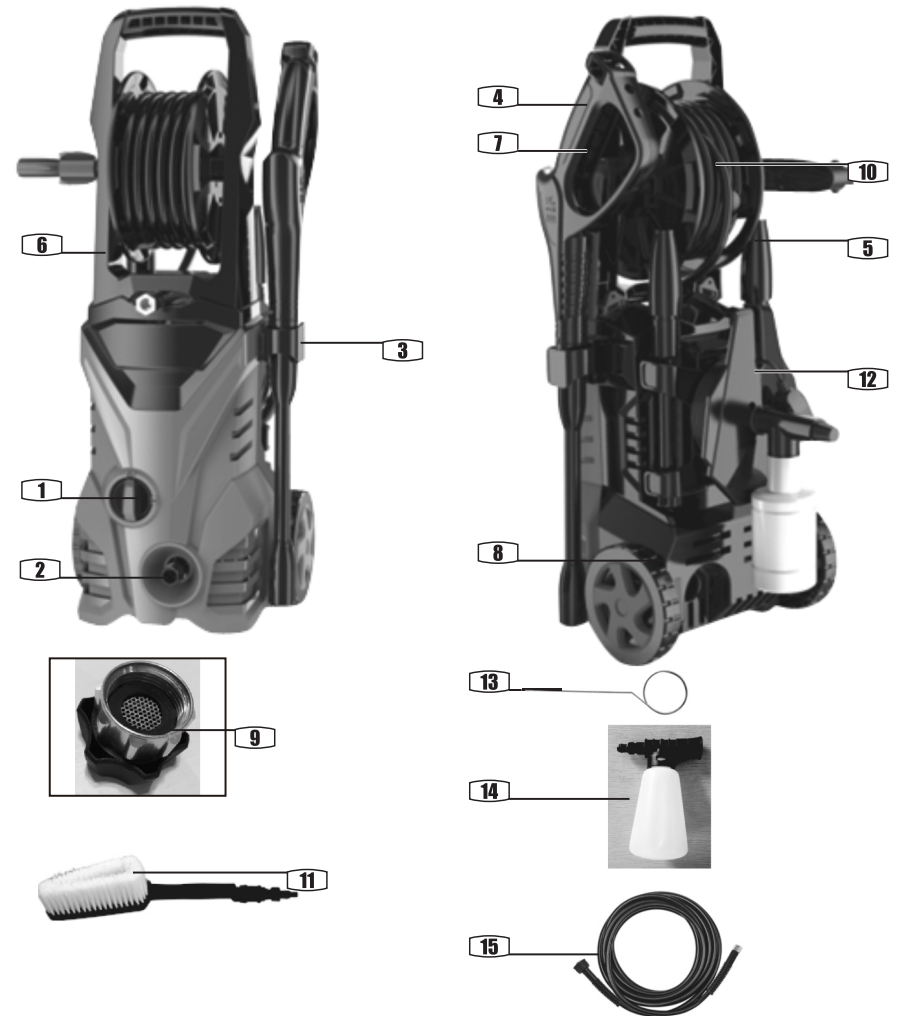
Cleaning of machine vents

The machine should be kept clean so as to let cooling air pass freely through the machine vents.

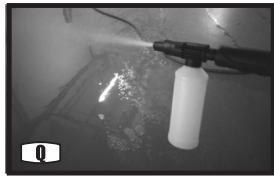
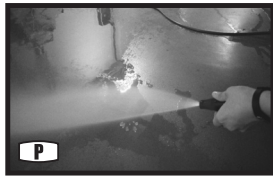
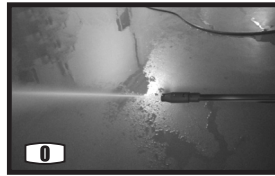
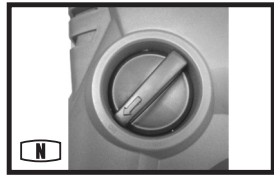
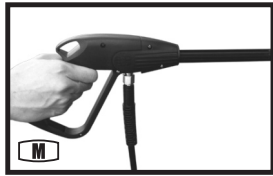
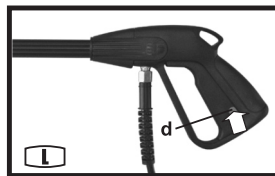
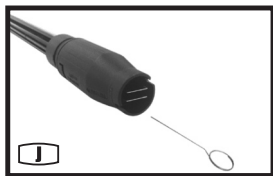
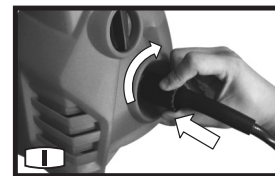
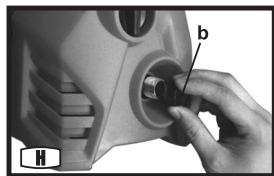
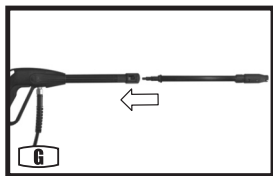
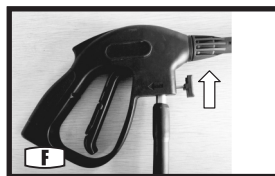
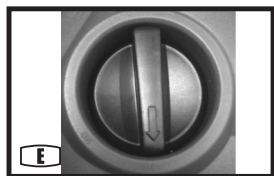
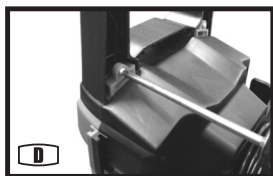
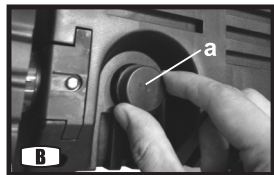
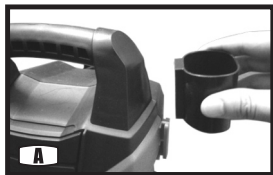
Greasing of couplings

To ensure an easy connection and that o-rings do not dry up. The couplings should be greased regularly.

EP23454BL



EP23454BL



HIGH PRESSURE WASHER

EN

2. MOUNTING OF INLET WATER FILTER

- 1) Remove the protection cap (a) of inlet firstly (See Fig B)
- 2) Attach water filter (9) to the machine's inlet (See Fig C)

3. MOUNTING OF HANDLE

Press the handle (6) to the machine, and fix the screws. (See Fig D, E)

4. ASSEMBLING THE HIGH PRESSURE HOSE

- 1) Make sure that ON/OFF switch is in OFF position. (See Fig F)
- 2) Tighten the high pressure hose into spray gun (4). But do not over tighten (See Fig G)
- 3) Insert the adjustable spray lance (5) into spray gun (4), and twist 1/4turn until rectangular tab appears. (See Fig H)
- 4) Remove the protection cap (b) of outlet firstly, Connect the high pressure hose to the outlet (2). (See Fig I, J)

5. ASSEMBLING TURBO NOZZLE

Insert the Turbo Nozzle (14) into spray gun (4), and twist 1/4turn until rectangular tab appears. (See Fig K)

6. ASSEMBLING BRUSH NOZZLE

- 1) Tighten brush nozzle(16) into connection lance (15). (See Fig L)
- 2) Insert the connection lance (5) into spray gun (4), and twist 1/4turn until rectangular tab appears. (See Fig M)
- 3) Brush nozzle is ready for use. (See Fig N)

7. CONNECTING WATER SUPPLY

Connect water pipe with female coupler (c, no supplied) to water filter of inlet. (See Fig O)

OPERATION

1. ON/OFF SAFETY SWITCH

- 1) Connect the plug into a properly outlet.
- 2) Trigger switch is in a locked off position to prevent in accidental starting.
Depress safety lock (d) to "unlocking" position, then trigger switch is now on. (See Fig P)
- 3) Before operate high pressure washer, press the trigger switch (7) to bleed any trapped air out of the pump and hose. (See Fig Q)
- 4) Start the pressure washer by turning ON/OFF switch to ON. Press the trigger. Reminder: motor

does not run continuously, only when trigger is squeezed. (See Fig R)

2. SURFACE PREPARATION

Before starting any cleaning task it is important the area for objects which could create a hazard. Remove objects from the work area which area which could be tripped over, such as toys or outdoor furniture. Ensure that all doors and windows are closed tight.

3. USING THE ACCESSORIES

1) Adjustable wand

The adjustable spray lance allows you to use any variety of spray patterns from a fan spray to a pencil jet spray. When using pressure washer to clean wood decks, siding, vehicles etc., always start using the fan spray and begin spraying from a minimum 36" away to avoid damaging the surface of the material you are cleaning. (See Fig S)

CAUTION: Do not adjust the nozzle while the trigger is squeezed.

2) Adjusting the spray

The adjustable spray lance can adjust from fan to jet setting. The spray is adjusted from jet spray to fan spray by turning the nozzle (See Fig T)

Note: the pressure of the spray on the surface you are cleaning increases as you move the wand closer to the surface.

CAUTION: Jet spray adjustment is very aggressive. Do not adjust while spraying. We recommend that for most cleaning applications a 20-degree spray angle should be used to avoid damage to the surface being sprayed.

3) Using the soap bottle

To penetrate and remove dirt more effectively it is recommended to use the detergent dispensing function.

Connect the soap bottle into spray gun, turn the soap bottle clockwise until it locked in right position. (See Fig U)

NOTE: Detergent need to be diluted to achieve the most effective cleaning. It is recommended to dilute the detergent in suitable container to the required concentration before using.

SYMBOLS

Warning: Do not direct the jet at persons, animals and electrical equipment.



Read the manual



Machine not suitable for connection to the potable water mains



Double insulation



RCM approval mark

TECHNICAL DATA

Voltage:	110V ~ 60Hz
Wattage:	1800W
Rated pressure:	
Max. Pressure:	2030PSI
Rated flow rate:	5.0 l/min
Max. flow rate:	7.0 l/min
Max. inlet water pressure:	1.4 Mpa
Degree of protection:	IPX5
Rated temperature:	0-40°C
Machine weight:	7.3kg
Insulation class:	□/II

OPERATING INSTRUCTIONS

NOTE: Before using the tool, read the instruction book carefully.

**CAUTION!**

- Never use the pressure washer to draw in water contaminated with solvents (e.g. paint thinners, gasoline, oil, etc.).
- Dirt in the feed water will damage the unit. To avoid this risk, we recommended checking the water filter (located inside the water inlet; to clean it out see maintenance section).
- Always prevent debris from being drawn into the unit by using a clean water source and an accessory water source and an accessory water filter if required.

Water supply (cold water only)

1. Do not draw non-water liquids through the unit.
For use with cold water supply only.
2. Water hose must be at least a 1/2" in diameter.
3. Flow rate of water supply must not fall below 6 l / min.
4. Flow rate can be determined by running the water for one minute into an empty container.
5. The water supply temperature must not exceed 40°C (104°F)

ASSEMBLY**1. ASSEMBLING SPRAY GUN HOLDER**

Press the spray gun holder (3) on to the machine. (See Fig A)

COMPONENT LIST

- | | |
|----|----------------------------|
| 1 | ON/OFF SWITCH |
| 2 | OUTLET WITH PROTECTION CAP |
| 3 | SPRAY GUN HOLDER |
| 4 | SPRAY GUN |
| 5 | ADJUSTABLE SPRAY LANCE |
| 6 | HANDLE |
| 7 | TRIGGER SWITCH |
| 8 | WHEELS |
| 9 | INLET WITH WATER FILTER |
| 10 | HOSE REEL |
| 11 | FIX BRUSH |
| 12 | HOLDER FOR ELECTRIC CABLE |
| 13 | CLEANING PIN |
| 14 | DELERGENT BOTTLE |
| 15 | HIGH PRESSURE HOSE |

ACCESSORIES

Spray Gun	1
Spray Gun holder	1
Connection lance	1
Adjustable spray lance	1
8m high pressure hose	1
Cleaning pin	1
Water filter (fitted within inlet)	1
Soap bottle	1
HPC Connector	1
Fixed brush	1

Use good quality accessories marked with a well-known brand name. Choose the type according to the work you intend to undertake. Refer to the accessory packaging for further details. Store personnel can assist you and offer advice.

GENERAL POWER TOOL SAFETY WARNINGS

WARNING: Read all safety warnings and all instructions. Failure to follow the warnings and instructions may result in electric shock, fire and/or serious injury.

Save all warnings and instructions for future reference.

- This appliance is not intended for use by persons (including children) with reduced physical, sensory or mental capabilities, or lack of experience and knowledge, unless they have been given supervision or instruction concerning use of the appliance by a person responsible for their safety.
 - Children should be supervised to ensure that they do not play with the appliance.
- If the supply cord is damaged, it must be replaced by the manufacturer, its service agent or similarly qualified persons in order to avoid a hazard.

ADDITIONAL POWER TOOL SAFETY WARNINGS

- WARNING:** Do not use the appliance without reading the instruction sheet.
- Safety boots, safety gloves, safety helmets with visors, hearing protection etc. shall be worn while operating the machine.

- When opening the trigger gun, there is a danger of the kickback force and the sudden torque on the spray assembly. Please hold the nozzles tightly.
- **WARNING** This machine has been designed for use with the cleaning agent supplied or recommended by the manufacturer. The use of other cleaning agents or chemicals may adversely affect the safety of the machine.
- **WARNING** High pressure jets can be dangerous if subject to misuse. The jet must not be directed at persons, live electrical equipment or the machine itself.
- **WARNING** Do not use the machine within range of persons unless they wear protective clothing.
- **WARNING** Do not direct the jet against yourself or others in order to clean clothes or foot-wear.
- Disconnect from the electrical power supply before carrying out user maintenance.
- High pressure cleaner should not be taken by children or untrained persons.
- **WARNING** Risk of explosion – Do not spray flammable liquids.
- **WARNING** To ensure machine safety, use only original spare parts from the manufacturer or approved by the manufacturer.
- **WARNING:** High pressure hoses, fittings and couplings are important for the safety of the appliance. Use only hoses, fittings and couplings recommended by the manufacturer
- **WARNING** Water that has flown through backflow preventers is considered to be non-potable.
- **WARNING** The machine shall be disconnected from its power source by removing the plug from the socket-outlet during leaning or maintenance and when replacing parts or converting the machine to another function.
- **WARNING** Do not use machine if a supply cord or important parts of the machine are damaged, e.g. safety devices, high pressure hoses, trigger gun.
- **WARNING** If an extension cord is used, the plug and socket must be of watertight construction.
- **WARNING** Inadequate extension cords can be dangerous.
- The electric supply connection shall be made by a qualified electrician and comply with IEC 60364-1. It is recommended that the electric supply to this machine should include either a residual current device that will interrupt the supply if the leakage current to earth exceeds 30 mA for 30 ms or a device that will prove the earth circuit.

Free Manuals Download Website

<http://myh66.com>

<http://usermanuals.us>

<http://www.somanuals.com>

<http://www.4manuals.cc>

<http://www.manual-lib.com>

<http://www.404manual.com>

<http://www.luxmanual.com>

<http://aubethermostatmanual.com>

Golf course search by state

<http://golfingnear.com>

Email search by domain

<http://emailbydomain.com>

Auto manuals search

<http://auto.somanuals.com>

TV manuals search

<http://tv.somanuals.com>