

Quick Installation Guide



Installationsanleitung

Guide D'installation

Guía de Instalación

Guida di Installazione

Installatiehandleiding

Instrukcja Instalacji

Instalační příručka

Telepítési Segédlet

Installasjonsveiledning

Installationsvejledning

Asennusopas

Installationsguide

Guia de Instalação

Οδηγος Γρηγορης Εγκαταστασης

Vodič za Brzu Instalaciju

Kratka Navodila za Uporabo

Ghid de Instalare Rapidă

DHP-W311AV **PowerLine AV 500** **Wireless N Mini Starter Kit**

(DHP-308AV & DHP-W310AV)

Version 4.00 | January 4 2016

Package Contents



DHP-W310AV PowerLine AV 500 Wireless Extender Kit



DHP-308AV PowerLine
AV 500 Mini Adapter



Installation CD-ROM



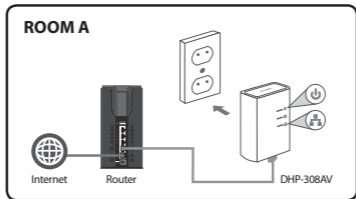
CAT5 Ethernet Cable (2x)



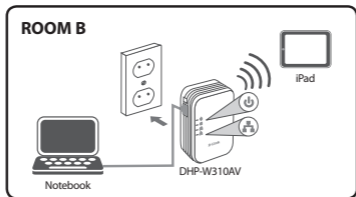
Wi-Fi Configuration Card

Hardware Installation

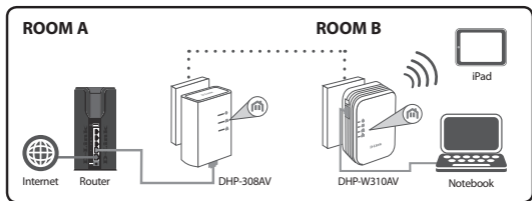
1. Plug the DHP-308AV PowerLine AV 500 Mini Adapter into a wall outlet near your router. Connect one of the included Ethernet cables to a LAN port on your router, and connect the other end of the cable to your DHP-308AV.



2. Plug the DHP-W310AV PowerLine AV 500 Wireless Extender Kit into a wall outlet in a place you want to extend your network. Insert one end of the second included Ethernet cable into the DHP-W310AV, and the other end into your computer. You may also connect to the DHP-W310AV over Wi-Fi with the information on the Wireless Configuration Card.



3. Your router, DHP-308AV, DHP-W310AV, and computer are all connected now. Proceed to "First-time Configuration" on the next page.



First-time Configuration

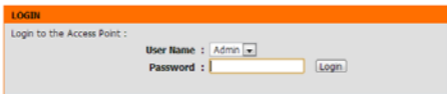
1. Use your web browser to go to:

Windows: **http://dlinkapWXYZ** or **http://dlinkap**

Mac OS: **http://dlinkapWXYZ.local.** or **http://dlinkap.local.**

Where WXYZ is the last 4 digits of the MAC address. The full address is available on the included Wireless Configuration Card.

2. Select ADMIN for the User Name and leave the Password blank.



3. From the landing page, start the Setup Wizard for PowerLine Connection.
4. When prompted, press the Common Connect Button for 2 seconds on the DHP-308AV to connect it to the DHP-W310AV.
Note: If you have not previously secured your existing PowerLine network, you will need to set up security for all of your existing PowerLine devices. Perform the following steps for each device: press the Common Connect Button on the DHP-W310AV, then press the Simple Connect Button on your existing PowerLine device within 2 minutes.



5. Follow the wizard's steps to set up your PowerLine network. For more detailed support, please refer to the User Manual.

Frequently Asked Questions

Q: Why can't my DHP-W310AV find my DHP-308AV?

- Be sure you are plugging each directly into a wall outlet. Plugging into anything else may slow or stop the connection.
- The electrical wiring must have a direct connection. For example, PowerLine connections may not be available across a street or to different units in an apartment building.

Q: My connection is erratic and sometimes cuts out or is slow, why?

- Try to keep nearby outlets free of other devices, especially chargers and hair dryers, to minimize electrical interference.

Q: How do I find my wireless network? Why does it have such a weird name? Can I change it?

- You can find the Wi-Fi name (SSID) and password on the Wireless Configuration Card. Common names and passwords like *dlink* or *password* are avoided for security purposes.
- You can change your wireless settings by navigating a web browser to <http://dlinkapWXYZ.local>. then **Setup** then **Wireless Settings**. WXYZ is an example, the real address is on your configuration card.

Q: Can I use only the DHP-W310AV or DHP-308AV to get online?

- PowerLine devices work together to create a network. They communicate over your electrical wiring, but you still need an Internet connection from a router and/or modem.

Q: Can I use more than one PowerLine device at a time?

- Yes you can! D-Link offers a host of PowerLine devices that include adapters, extenders, and routers.

The device complies with Part 15 of the FCC Rules. Operation is subject to the following two conditions: (1)The device may not cause harmful interference, and (2)this device must accept any interference received, including interference that may cause undesired operation.

TECHNICAL SUPPORT

dlink.com/support

Free Manuals Download Website

<http://myh66.com>

<http://usermanuals.us>

<http://www.somanuals.com>

<http://www.4manuals.cc>

<http://www.manual-lib.com>

<http://www.404manual.com>

<http://www.luxmanual.com>

<http://aubethermostatmanual.com>

Golf course search by state

<http://golfingnear.com>

Email search by domain

<http://emailbydomain.com>

Auto manuals search

<http://auto.somanuals.com>

TV manuals search

<http://tv.somanuals.com>