

D-Link®



Quick Install Guide

DAP-2555 *AirPremier*® N
Dual Band PoE Access Point

powered by
CloudCommand™



Business Class Networking

System Requirements

Important: Before connecting, you must register your Access Point online.

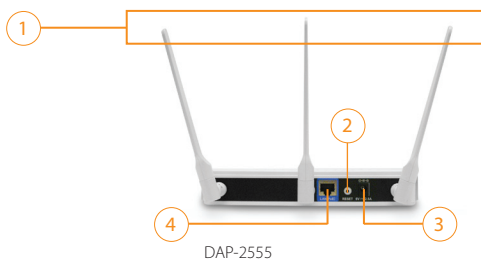
To properly configure your Access Point, you need:

- Internet connectivity
- Computer with a Windows®, Macintosh®, or Linux-based operating system
- Browser with Firefox 3.6, Chrome 5.0, Safari 4.0, Internet Explorer 8.0, or later versions
- Note: your Access Point includes a one-year subscription to the CloudCommand™ online service. After one year, the service requires an annual subscription.

Package Contents

If any of following items are missing, please contact your reseller:

- D-Link DAP-2555 AirPremier N Access Point powered by CloudCommand™
- 3 Detachable Antennas
- Power Adapter
- CAT5 Ethernet Cable



① Antennas

Used to broadcast wireless network and receive connections from clients

② Reset Button

Resets the Access Point to factory defaults

③ Power Receptor

Receptor for power adapter

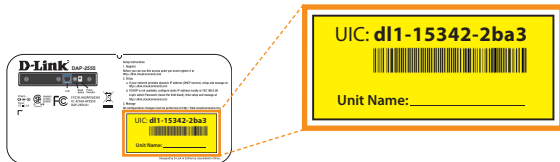
④ LAN Port

Connects DAP-2555 to the network via Ethernet cable

Welcome to D-Link's line of cloud-managed wireless Access Points. Leverage the product's online interface to configure, deploy, secure and manage your entire wireless network.

Registering Your Access Point Online

Step 1: Before you can use the Access Point, you must register it online. Locate the Unit Identification Code (UIC) on the yellow label placed on the underside of your Access Point.



Product Label

Step 2: Go to <http://dlink.cloudcommand.com> on a compatible browser (Firefox 3.6, Chrome 5.0, Safari 4.0, Internet Explorer 8.0, or later versions).

Step 3 : Choose the appropriate registration scenario.

New Customer: If you don't have an existing CloudCommand™ account, create one by following the instructions in our simple step-by-step wizard. The wizard will guide you through the initial setup of your entire wireless network.

Existing Customer: If you already have a CloudCommand™ account, please log in. In the left menu bar on your dashboard, click "New Access Point" and follow the instructions.



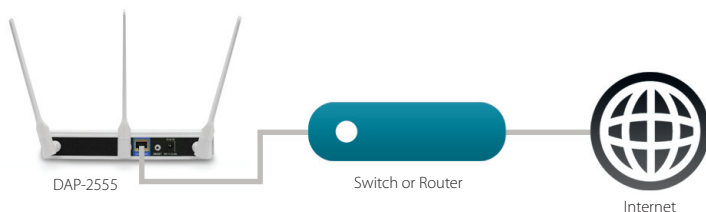
CloudCommand™ Dashboard

Option 1: Deploying Your Access Point **with** Dynamic IP Addressing

If your network **automatically assigns IP addresses** (DHCP service), connect the Access Point directly to the network by plugging an Ethernet cable into the LAN port on its rear panel. Insert the cable's other end into your existing switch or router with Internet connectivity.

No additional configuration is required. Within a few minutes the Access Point will self configure and become ready to use. You have the option of later reconfiguring your Access Point to a static IP address using the CloudCommand™ interface.

The DAP-2555 is PoE (Power over Ethernet) compliant. You can power it either by using a PoE switch or the included power adapter. Once powered, the green power LED will turn ON to indicate proper operation.



Option 2:

Deploying Your Access Point **without** Dynamic IP Addressing

If your network **does not automatically assign IP addresses** (No DHCP service), follow these steps to properly configure your Access Point:

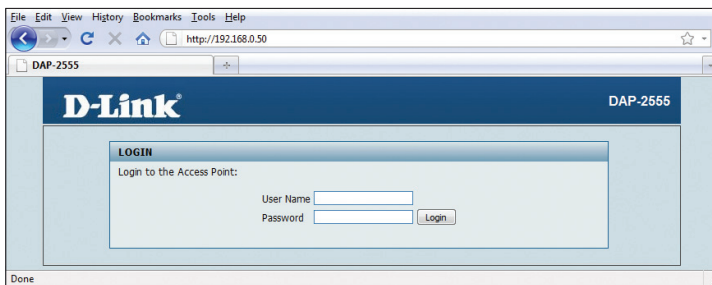
Step 1: Connect the Access Point directly to your computer using an Ethernet cable.



Step 2: Configure the Ethernet connection of your computer as follows:

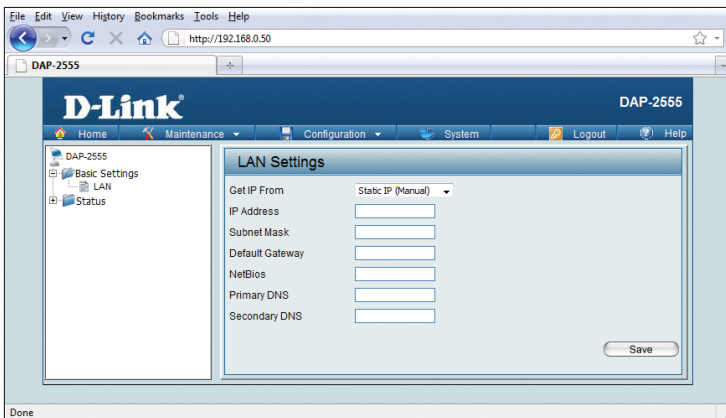
- IP Address: 192.168.0.10
- Subnet Mask: 255.255.255.0

Step 3: Launch a web browser, type the default IP address of the Access Point (**http://192.168.0.50**) and press Enter.



- Type "**Admin**" in the User Name field.
- Leave the Password field **blank**.
- Click the Login button.

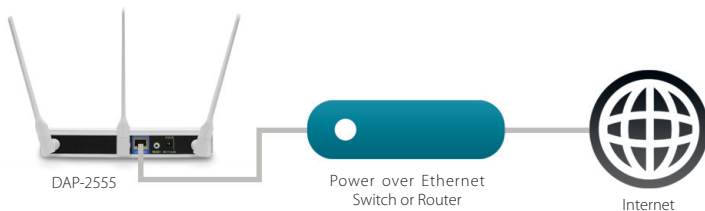
Step 4: Once logged in, you will be able to change the Access Point's IP address and DNS information to match your existing network configuration.



Step 5: Once the proper IP configuration is set, disconnect the Access Point from your computer and connect it to your existing switch or router with Internet connectivity.

No additional configuration is required. Within a few minutes the Access Point will self configure and become ready to use. You have the option of later reconfiguring your Access Point to a new static IP address using the CloudCommand™ interface.

The DAP-2555 is PoE (Power over Ethernet) compliant. You can power it either by using a PoE switch or the included power adapter. Once powered, the green power LED will turn ON to indicate proper operation.



CloudCommand™ Dashboard

To view your CloudCommand™ dashboard, please log in at <http://dlink.cloudcommand.com>. The dashboard is your starting point to monitor network activity, troubleshoot problems, authorize and disconnect individual devices, or make configuration changes to your Access Point(s).



- 1 Manage Access Points and connected devices
- 2 View alerts and events, and set up alert notifications
- 3 Display detailed activity reports for users and Access Points
- 4 Change configurations, Wi-Fi network names, security, and passwords
- 5 View activity graphs
- 6 View devices connected to your guest network
- 7 View devices connected to your primary wireless network
- 8 View Access Points in your Connected network
- 9 Read FAQs
- 10 Register new Access Points
- 11 Authorize a new device to connect to your wireless network
- 12 Monitor alerts in real time

Technical Support

D-Link's website contains the latest user documentation and software updates for D-Link products.

U.S. and Canadian customers can contact D-Link Technical Support through our website or by phone.

United States

Telephone
877.354.6555

World Wide Web

<http://support.dlink.com>

Canada

Telephone
877.354.6560

World Wide Web

<http://support.dlink.ca>

D-Link[®]

Version 1.1
October 21, 2010
6AP2555Q.02G

Copyright ©2010 D-Link Corporation/D-Link Systems, Inc. All rights reserved. D-Link and the D-Link logo are registered trademarks of D-Link Corporation or its subsidiaries in the United States and other countries. CloudCommand™ is a trademark of PowerCloud™ Systems, Inc. All rights reserved. Other trademarks are the property of their respective owners. Product specifications, size and shape are subject to change without notice, and actual product appearance may differ from that depicted herein.

Free Manuals Download Website

<http://myh66.com>

<http://usermanuals.us>

<http://www.somanuals.com>

<http://www.4manuals.cc>

<http://www.manual-lib.com>

<http://www.404manual.com>

<http://www.luxmanual.com>

<http://aubethermostatmanual.com>

Golf course search by state

<http://golfingnear.com>

Email search by domain

<http://emailbydomain.com>

Auto manuals search

<http://auto.somanuals.com>

TV manuals search

<http://tv.somanuals.com>