

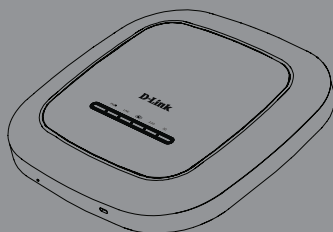


Quick Installation Guide

Business Cloud Access Point

This document will guide you through the basic installation process for your D-Link Wireless AC Access Point.

DBA-1510P



About This Instruction Guide

This installation guide provides instructions for installing the DBA-1510P Business Cloud Access Point on your network. For additional information about how to use the DBA-1510P, please see the User's Manual which is available from the D-Link support website.

Setup Preparation

Please ensure that the following items are readily available before continuing the quick installation process.

- D-Link Business Cloud License
- DBA-1510P Registration in D-Link Business Cloud
- DBA-1510P is able to connect to D-Link Business Cloud through internet.

System Requirements

If you are unable to connect to the D-Link Business Cloud through the Internet due to your networking configuration you will need to manually configure the DBA-1510P. Below are the minimum system requirements needed to manually configure the device.

- An Ethernet port, or an installed Ethernet adapter
- Internet Explorer 9.0, Safari 5.0, Firefox 19, Chrome 25 or later versions of these browsers

Package Contents

- DBA-1510P Business Cloud Access Point
- Mounting Ring
- Power Adapter
- Ethernet Cable
- Console Cable
- Rubber Feet

If any of the above items are missing, please contact your reseller.

Note: Using a power supply with a different voltage than the one included with the DBA-1510P will damage the device and void the warranty for this product.

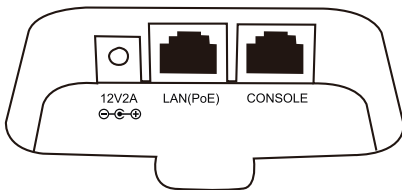
Hardware Overview

LEDs



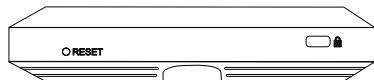
Power	Solid Orange	The DBA-1510P is performing its startup procedure
	Solid Green	The DBA-1510P is ready to use
LAN	Solid Green	The DBA-1510P is connected to another device on the network
	Blinking Green	The DBA-1510P is transferring data
Cloud	Solid Orange	The DBA-1510P is connecting to the D-Link Business Cloud
	Solid Green	The DBA-1510P is currently in Cloud mode
	Solid Red	The DBA-1510P is not working properly in Cloud mode
2.4 Ghz	Solid Green	The DBA-1510P is operating in 2.4 Ghz mode
	Blinking Green	The DBA-1510P is transferring data over 2.4 Ghz
5 Ghz	Solid Green	The DBA-1510P is operating in 5 Ghz mode
	Blinking Green	The DBA-1510P is transferring data over 5 Ghz

Interfaces



Bottom

- Power Receptor
- LAN Port (PoE)
- Serial Console Port



Front

- Kensington Security Slot
- Reset Button

Press the Reset Button between 2 to 5 seconds to restart the device.

Press the Reset Button between 6 to 15 seconds to restore the device to its factory default settings.

Press the Reset Button more than 15 seconds to restore the device to its factory default settings and also force the loading of alternate firmware.

Installation

Step 1 – Powering The Device

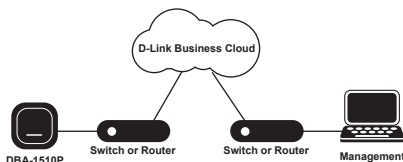
To power on the DBA-1510P, you can use one of the two following methods:

1. Connect the supplied power adapter
2. Plug one end of your Ethernet cable into the LAN port of the DBA-1510P, and the other end into a port on a Power over Ethernet enabled switch.

Step 2 – Configure The Device

The easiest way to configure the DBA-1510P is to connect the DBA-1510P to the Internet through a switch or router. Connect your computer to the Internet and manage the DBA-1510P via D-Link Business Cloud.

The DBA-1510P will automatically connect to the D-Link Business Cloud, download its configuration, and join the appropriate network.



If you are unable to connect the DBA-1510P to the D-Link Business Cloud through the Internet due to your networking configuration you will need to manually configure the DBA-1510P using one of the following options.

1. Connect the DBA-1510P and your computer directly via a straight-through Ethernet cable. You can then manage the access point from your computer using the following steps.

Enter the DBA-1510P hostname in the address field of your browser and then press **Enter**. The default hostname is "DBA-1510P-XXXX" where XXXX is the last 4 digits of the MAC address listed on the device label located on the bottom of the device.

Log in to the administration web pages. The default login information is:
Username: admin
Password: admin



2. Connect the DBA-1510P and your computer to the same switch or router. You can then manage the access point from your computer using the following steps.

Enter the DBA-1510P hostname in the address field of your browser and then press **Enter**. The default hostname is

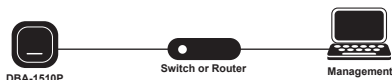
“DBA-1510P-XXXX” where XXXX is the last 4 digits of the MAC address listed on the device label located on the bottom of the device.

Log in to the administration web pages.

The default login information is:

Username: admin

Password: admin



3. Connect your computer to the DBA-1510P wirelessly via the SSID “DBA-1510P-XXXX” where XXXX is the last 4 digits of the MAC address listed on the device label located on the bottom of the device. You can then manage the access point from your computer using the following steps.

Enter the DBA-1510P hostname in the address field of your browser and then press **Enter**. The default hostname is “DBA-1510P-XXXX” where XXXX is the last 4 digits of the MAC address listed on the device label located on the bottom of the device.

Log in to the administration web pages.

The default login information is:

Username: admin

Password: admin



Note: Once the device has been manually configured, it must be able to connect to the D-Link Business Cloud in order to continue functioning properly.

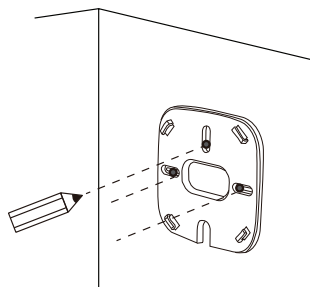
Step 3 – Mounting The Device

To mount the DBA-1510P, use one of the following methods:

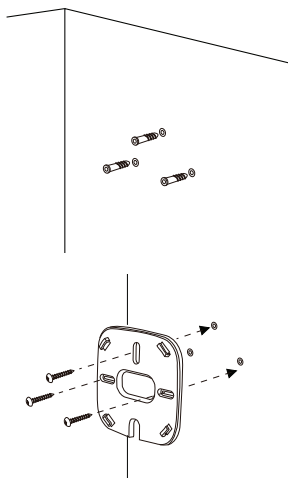
Mounting on a Solid Wall

Place the plastic wall mounting ring on a wall or ceiling.

1. Mark the points where you will insert the screws. Remove the mounting ring.

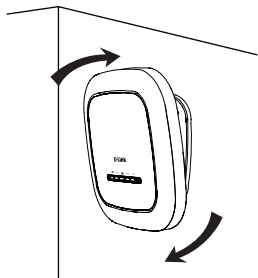


2. Drill holes in the marked points and insert the plastic wall anchors.
3. Use the supplied screws to attach the mounting ring to the wall.



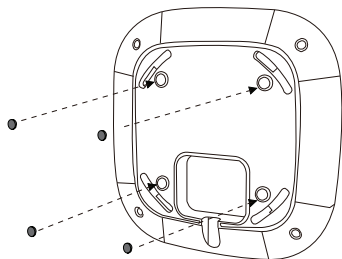
4. Plug the Ethernet cable into the LAN port on the access point.

- If you are not using a PoE switch or router with the DBA-1510P, plug the power cable into the Power Receptor on the access point.
- Place the DBA-1510P onto the mounting ring brackets. Lock the DBA-1510P into place by rotating the DBA-1510P clockwise.



Placement on a Desktop

- Attach the provided rubber feet to the holes located on the back of the DBA-1510P housing.
- Plug the Ethernet cable into the LAN port on the access point.
- If you are not using a PoE switch or router with the DBA-1510P, plug the power cable into the Power Receptor on the access point.



Additional Information

If you are encountering problems setting up your network, please refer to the user manual that can be obtained from the D-Link website. It contains many more rules, charts, explanations, and examples to help you get your network up and running.

Additional help is available through our offices listed at the back of the user manual or online. To find out more about D-Link products or marketing information, please visit the website <http://www.dlink.com>.

Warranty Information

The Warranty information is available at <http://warranty.dlink.com/>

Federal Communication Commission Interference Statement

This equipment has been tested and found to comply with the limits for a Class B digital device, pursuant to Part 15 of the FCC Rules. These limits are designed to provide reasonable protection against harmful interference in a residential installation. This equipment generates, uses, and can radiate radio frequency energy and, if not installed and used in accordance with the instructions, may cause harmful interference to radio communications. However, there is no guarantee that interference will not occur in a particular installation. If this equipment does cause harmful interference to radio or television reception, which can be determined by turning the equipment off and on, the user is encouraged to try to correct the interference by one or more of the following measures:

- Reorient or relocate the receiving antenna.
- Increase the separation between the equipment and receiver.
- Connect the equipment into an outlet on a circuit different from that to which the receiver is connected.
- Consult the dealer or an experienced radio/TV technician for help.

FCC Caution:

This device complies with Part 15 of the FCC Rules. Operation is subject to the following two conditions: (1) This device may not cause harmful interference, and (2) this device must accept any interference received, including interference that may cause undesired operation.

Non-modification Statement:

Changes or modifications not expressly approved by the party responsible for compliance could void the user's authority to operate the equipment.

FCC Radiation Exposure Statement:

This equipment complies with FCC radiation exposure limits set forth for an uncontrolled environment. This equipment should be installed and operated with minimum distance 20cm between the radiator & your body.

Free Manuals Download Website

<http://myh66.com>

<http://usermanuals.us>

<http://www.somanuals.com>

<http://www.4manuals.cc>

<http://www.manual-lib.com>

<http://www.404manual.com>

<http://www.luxmanual.com>

<http://aubethermostatmanual.com>

Golf course search by state

<http://golfingnear.com>

Email search by domain

<http://emailbydomain.com>

Auto manuals search

<http://auto.somanuals.com>

TV manuals search

<http://tv.somanuals.com>