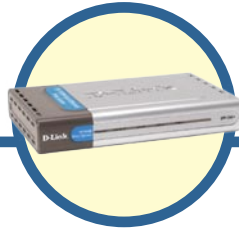


D-Link®

Quick Installation Guide

This product can be setup using any current Web browser, i.e., Internet Explorer 6 or Netscape Navigator 7.0



DP-300+
Fast Ethernet Multi-Port
Print Server

Before You Begin

You will need an Ethernet-enabled device, such as a laptop or desktop computer and a LPT printer or printer with serial port that will connect to the DP-300+.

IMPORTANT: TURN OFF the power to the printer BEFORE installing the DP-300+

Check Your Package Contents




DP-300+Fast Ethernet Multi-Port Print Server



CD-ROM (Software, Manual and Warranty)



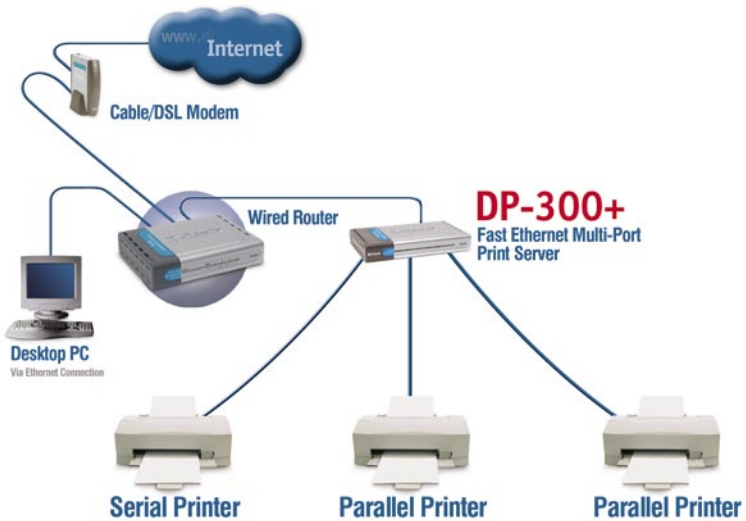
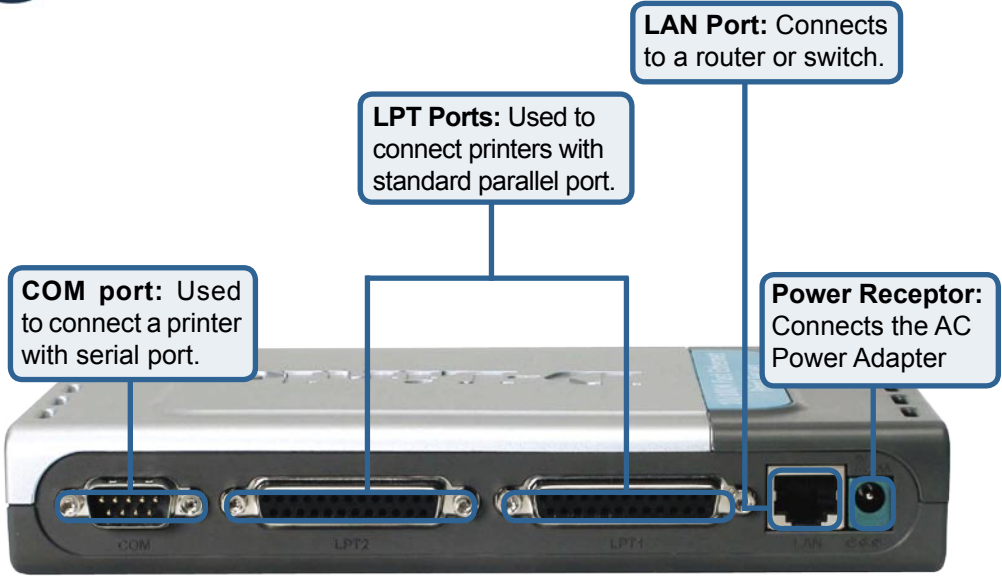
5V DC, 2.5A Power Adapter

 Using a power supply with a different voltage rating will damage this product and void its warranty.

If any of the above items are missing, please contact your reseller.

1

Connecting the DP-300+ to Your Network



1

Connecting the DP-300+ to Your Network (continued)

Note: Don't connect the power cord to the DP-300+ until you are advised to do so.



For Mac OS printing, please refer to manual (.pdf) located on the CD-ROM.

- A. Insert one end of a straight-through CAT5 Ethernet cable into the DP-300+'s LAN Port. Connect the other end to an Ethernet port on your gateway or switch.
- B. Make sure that your Printer is turned **OFF**.
- C. Attach one end of your printer cable to the appropriate port on the DP-300+ and the other end to the corresponding port on your printer.
- D. Turn **ON** the printer. Repeat steps B-D for each printer before proceeding to step E.
- E. Plug one end of the power adapter into the DP-300+ and the other end into your electric outlet. The DP-300+ will turn on and begin a self-test.

2

Configuring the DP-300+

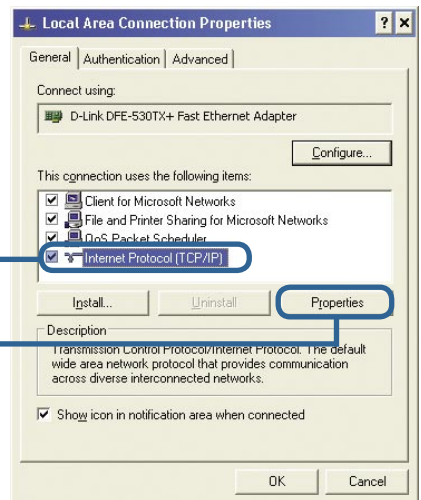
For additional Windows operating system setup or information on the Web-management interface, refer to the manual located on the CD-ROM.

The factory default IP address of the DP-300+ is **192.168.0.10**. The IP address of the DP-300+ must be in the same range as your network. You can change the IP address of the DP-300+ to match the IP address scheme of your existing network. To access the Print Server's Web configuration interface, assign an IP address on one of the wired PCs on your network to the same IP scheme as the Print Server.

Go to **Start > Right-click on My Network Places > select Properties > Right click on the Network Connection associated with your Network Adapter and select Properties.**

Click **Internet Protocol (TCP/IP)**

Click **Properties**



2

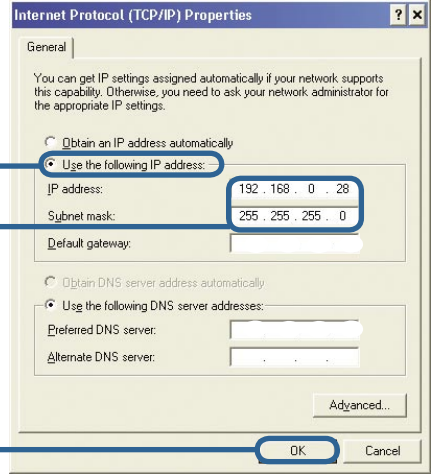
Configuring the DP-300+ (continued)

Input a static IP address in the same range as the print server. (192.168.0.xx)

Select **Use the following IP address**

IP address: **192.168.0.28**
Subnet mask: **255.255.255.0**

Click **OK**



Click **OK** to apply the new settings

Open your Web browser and type **http://192.168.0.10** into the URL address box. Then press the **Enter** or **Return** key.

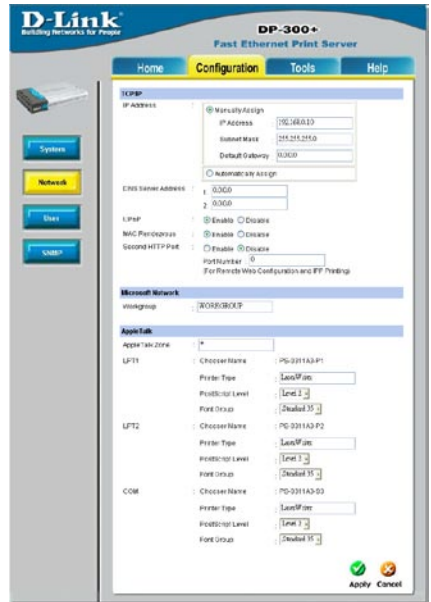


2

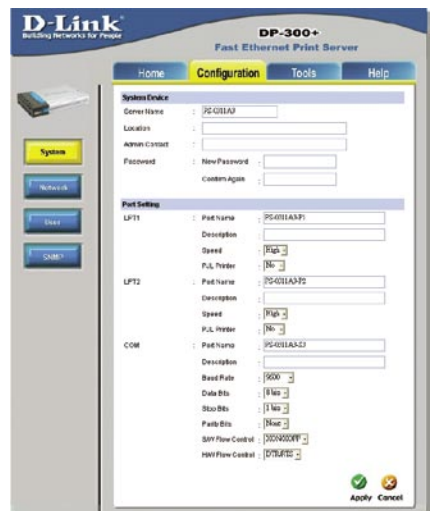
Configuring the DP-300+ (continued)

The IP address of the DP-300+ can be modified from the **Network** option under the **Configuration** tab.

This Quick Installation Guide will use the Print Server's default IP address in all examples. Make the appropriate changes if you have modified the DP-300+'s IP address.



Select the **System** button under the **Configuration** tab to view the Print Server and Port names. If you change the names of the ports, please make note of them, as they will be needed during the Add Printer Wizard.

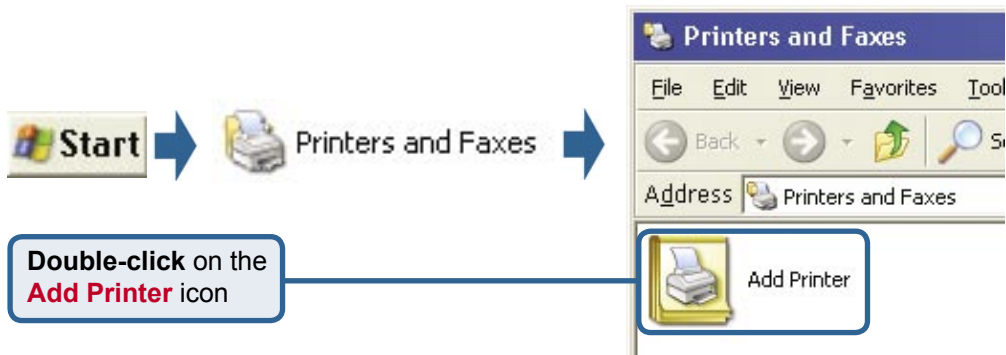


3

The Add Printer Wizard

For Windows XP:

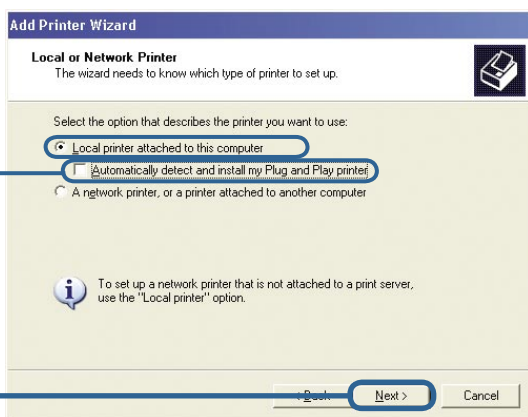
Go to the **Start** menu > **Printers and Faxes** > **Add a Printer**



Click Next



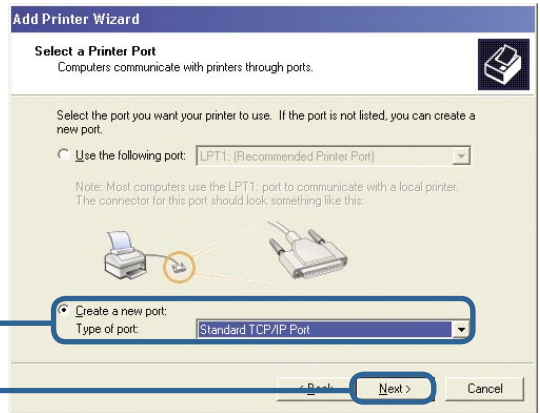
Select Local Printer and uncheck Automatically detect and install my Plug and Play printer.



Click Next

3

The Add Printer Wizard (continued)

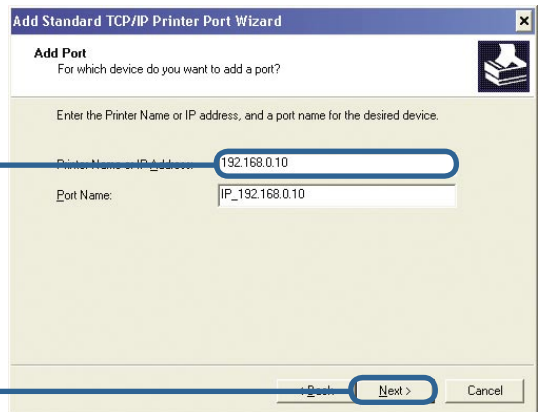


Select **Create a new port** and choose **Standard TCP/IP Port** from the drop-down menu.

Click **Next**



Click **Next**



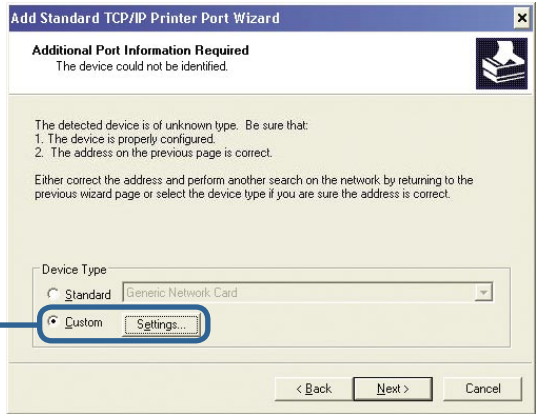
Type **192.168.0.10**

The Port Name will fill in automatically.

Click **Next**

3

The Add Printer Wizard (continued)



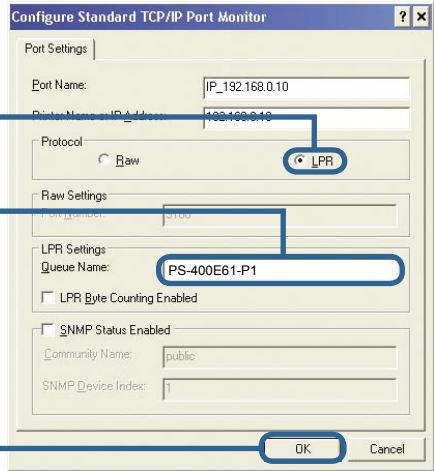
Select **Custom** and click the **Settings** button

Select **LPR**

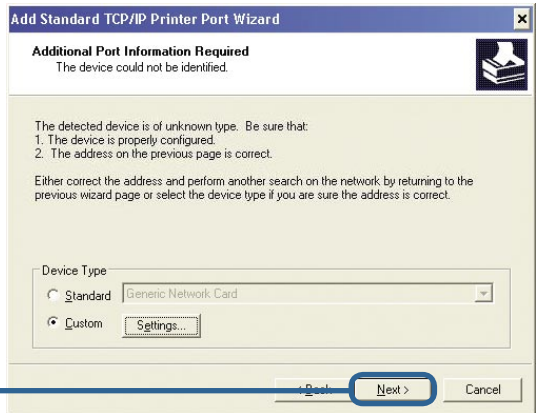
Enter the **Port** name for the port the printer is attached to.

Default port names differ with the device MAC ID:
PS-xxxxxx-P1 (for LPT Port 1)
PS-xxxxxx-P2 (for LPT Port 2)
PS-xxxxxx-S3 (for COM Port)

Click **OK**

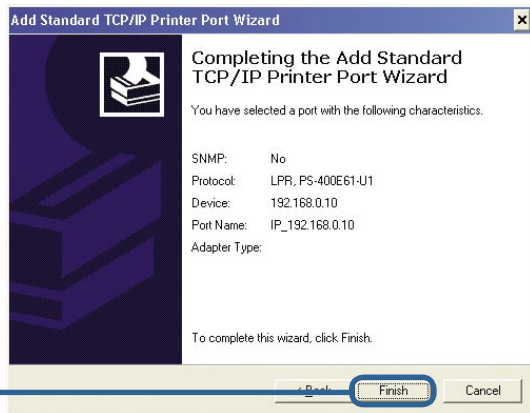


Click **Next**



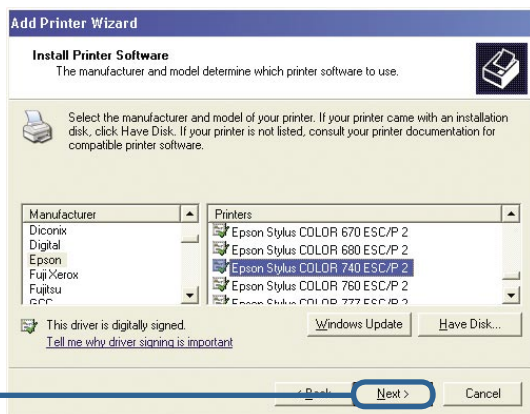
3

The Add Printer Wizard (continued)



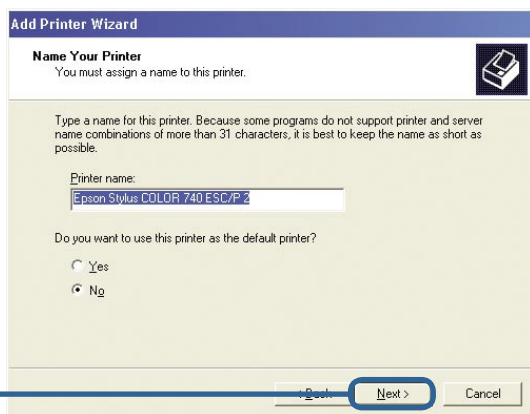
Click **Finish**

In this window, scroll down and select your printer manufacturer and model. (If it is not listed, insert the driver CD or diskette that came with your printer and click Have Disk.)



Click **Next**

The printer name and default printer settings are configured here.



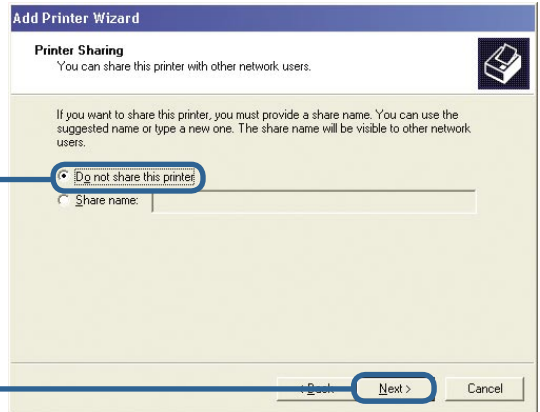
Click **Next**

3

The Add Printer Wizard (continued)

By opting to not share the printer, each system will print directly to the print server.

Select **Do not share this printer**

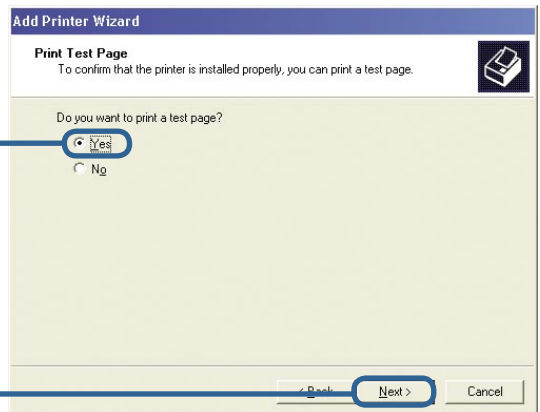


Click **Next**

Select **Yes** to print a test page

If the test page doesn't print successfully, please check the Frequently Asked Questions in the User Manual on the CD-ROM.

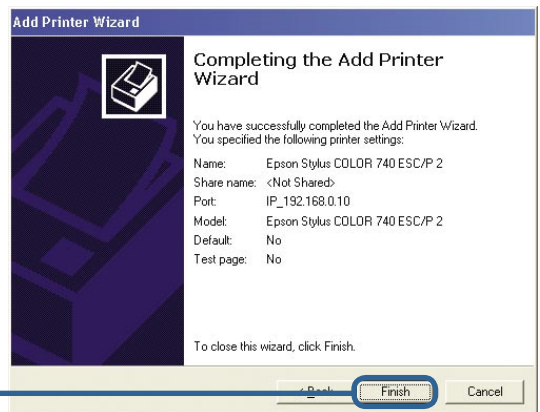
Click **Next**



Click Finish to complete the Add Printer Wizard.

Repeat the Add Printer Wizard steps for each Printer/Port and repeat the entire process on each system that will be printing.

Click **Finish**



Your Setup is now complete!

Technical Support

You can find software updates and user documentation on the D-Link website.

D-Link provides free technical support for customers within the United States and within Canada for the duration of the warranty period on this product.

U.S. and Canadian customers can contact D-Link technical support through our website, or by phone.

Tech Support for customers within Canada:

D-Link Technical Support over the Telephone:

(800) 361-5265

Monday to Friday 7:30am to 12:00am EST

Saturday and Sunday 11:00am to 7:00pm EST

D-Link Technical Support over the Internet:

<http://support.dlink.ca>

email:support@dlink.ca

Tech Support for customers within the United Kingdom & Ireland:

D-Link UK & Ireland Technical Support over the Telephone:

+44 (0)20 7365 8440 (United Kingdom)

+353 (0)12 421 061 (Ireland)

Monday to Friday 8:00 am to 10:00 pm

D-Link Technical Support over the Internet:

<http://www.dlink.co.uk>

Free Manuals Download Website

<http://myh66.com>

<http://usermanuals.us>

<http://www.somanuals.com>

<http://www.4manuals.cc>

<http://www.manual-lib.com>

<http://www.404manual.com>

<http://www.luxmanual.com>

<http://aubethermostatmanual.com>

Golf course search by state

<http://golfingnear.com>

Email search by domain

<http://emailbydomain.com>

Auto manuals search

<http://auto.somanuals.com>

TV manuals search

<http://tv.somanuals.com>