

QUICK INSTALL GUIDE

DWA-652

VERSION 1.0



D-Link®

WIRELESS

System Requirements

- A notebook computer with an available 32-bit Cardbus slot
- Windows® 2000 SP4 or Windows® XP SP2
- 20MB Hard Disk Space
- CD-ROM Drive
- A draft 802.11n, 802.11g, or 802.11b access point (for Infrastructure mode), or another draft 802.11n, 802.11g or 802.11b wireless adapter (for Ad-Hoc networking mode).

Package Contents



D-Link DWA-652
Xtreme N™ Notebook Adapter



Manual, software, and
warranty on CD

If any of the above items are missing, please contact your reseller.

Wireless Installation Considerations

The D-Link wireless adapter lets you access your network using a wireless connection from virtually anywhere within the operating range of your wireless network. Keep in mind, however, that the number, thickness and location of walls, ceilings, or other objects that the wireless signals must pass through, may limit the range. Typical ranges vary depending on the types of materials and background RF (radio frequency) noise in your home or business. The key to maximizing wireless range is to follow these basic guidelines:

1. Keep the number of walls and ceilings between the D-Link adapter and other network devices to a minimum - each wall or ceiling can reduce your adapter's range from 3-90 feet (1-30 meters.) Position your devices so that the number of walls or ceilings is minimized.
2. Be aware of the direct line between network devices. A wall that is 1.5 feet thick (.5 meters), at a 45-degree angle appears to be almost 3 feet (1 meter) thick. At a 2-degree angle it looks over 42 feet (14 meters) thick! Position devices so that the signal will travel straight through a wall or ceiling (instead of at an angle) for better reception.
3. Building Materials make a difference. A solid metal door or aluminum studs may have a negative effect on range. Try to position access points, wireless routers, and computers so that the signal passes through drywall or open doorways. Materials and objects such as glass, steel, metal, walls with insulation, water (fish tanks), mirrors, file cabinets, brick, and concrete will degrade your wireless signal.
4. Keep your product away (at least 3-6 feet or 1-2 meters) from electrical devices or appliances that generate RF noise.
5. If you are using 2.4GHz cordless phones or X-10 (wireless products such as ceiling fans, lights, and home security systems), your wireless connection may degrade dramatically or drop completely. Make sure your 2.4GHz phone base is as far away from your wireless devices as possible. The base transmits a signal even if the phone is not in use.

Adapter Installation

Warning: Do NOT install the DWA-652 Cardbus Adapter into your computer before installing the driver software from the D-Link CD.

Turn on the computer and Insert the D-Link DWA-652 Driver CD in the CD-ROM drive. The step-by-step instructions that follow are shown in Windows XP. The steps and screens are similar for the other Windows operating systems.

If the CD Autorun function does not automatically start on your computer, go to **Start > Run**. In the run box type “**D:\DWA652.exe**” (where D: represents the drive letter of your CD-ROM drive).

When the autorun screen appears, click **Install Drivers**.



The **InstallShield Wizard** window will appear.



Click **Next**

By default setup will install to the default location: *C:\Program Files\D-Link\ DWA-652*, where C: represents the drive letter of your hard drive. To install to a different location click **Browse** and specify the location.



Click **Next**

Select the Program Files folder location.



Click **Next**

Insert the adapter into an available cardbus slot on your computer.

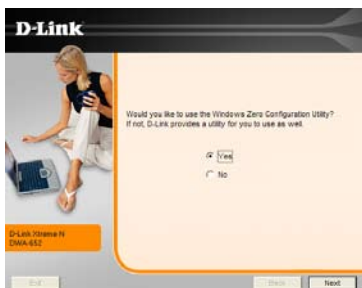
If the *Found New Hardware Wizard* appears, click **Cancel**.



Click **Next**

The D-Link configuration wizard will now appear.

If you are using Windows® XP (SP2), you will have the option to use either the D-Link utility or the built-in Windows® Wireless utility.



Click **Next**

Enter the network name (SSID) manually. If you enter the SSID incorrectly, you will automatically be brought to the site survey page. Click **Scan** to display the site survey page.



Click **Next**

Click on the network name (SSID) and click **Next**.



Click **Next**

Click **Finish** to continue. If you are prompted to reboot your computer, select **Yes, I want to restart my computer now**.



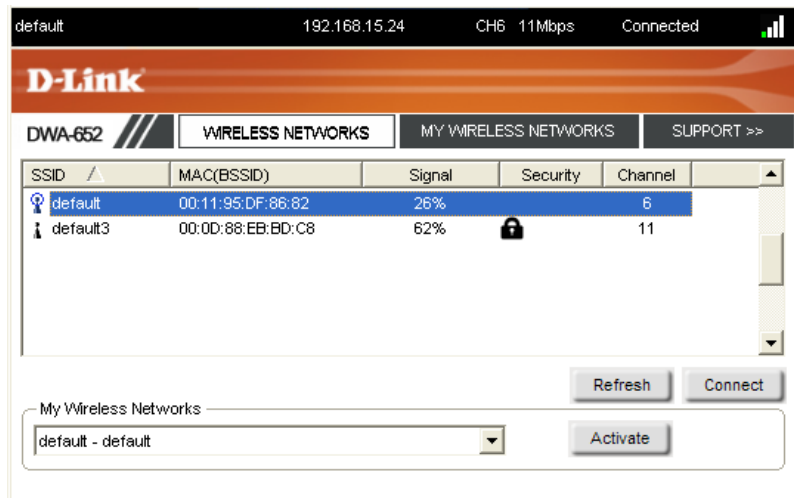
Click **Finish**

Connect to a Wireless Network

The D-Link DWA-652 uses the Wireless Connection Manager as the management software. The manager provides the user an easy interface to change any settings related to the wireless adapter. Clicking on the D-Link icon on your desktop will start the Configuration.

If you are using the Windows® XP Wireless Zero Config, please skip to page 10.

This window will allow you to see available wireless networks in your area. Simply click the network (SSID) you want to connect to and click the **Connect** button.



The screenshot shows the D-Link Wireless Connection Manager interface. At the top, it displays the status: "default", IP address "192.168.15.24", "CH6 11Mbps", and "Connected" with a signal strength icon. Below this is the D-Link logo and navigation tabs: "DWA-652", "WIRELESS NETWORKS", "MY WIRELESS NETWORKS", and "SUPPORT >>".

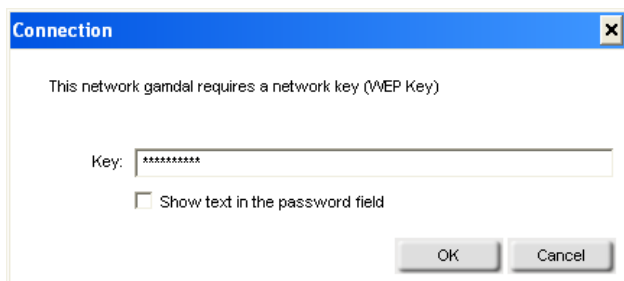
SSID	MAC(BSSID)	Signal	Security	Channel
default	00:11:95:DF:86:82	26%		6
default3	00:0D:88:EB:BD:C8	62%	🔒	11

Below the table, there are buttons for "Refresh" and "Connect". Underneath, there is a section for "My Wireless Networks" with a dropdown menu showing "default - default" and an "Activate" button.

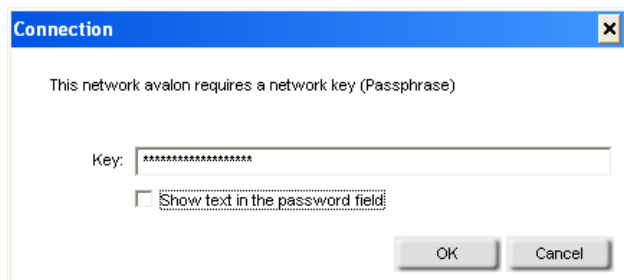
If you are attempting to connect to a secure network, You must supply the encryption key that is on the router or access point you are trying to connect to.

Please refer to the manual on the CD for more information on Wireless Security.

If the network you are connecting to is using WEP, enter the WEP key for the network and click **OK**.



If the network you are connecting to is using WPA-PSK or WPA2-PSK, enter the passphrase for the network and click **OK**.

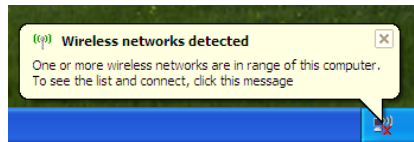


Windows® XP Configuration Utility

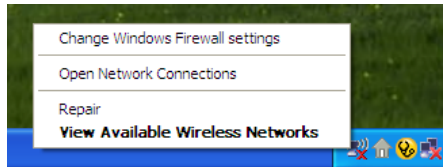
Windows® XP users may use the built-in wireless utility. The following instructions are for Service Pack 2 users.

If you are using Windows® 2000, you must use the D-Link Wireless Connection Manager. Please refer to page 9.

If you receive the **Wireless Networks Detected** bubble, click on the center of the bubble to access the utility.

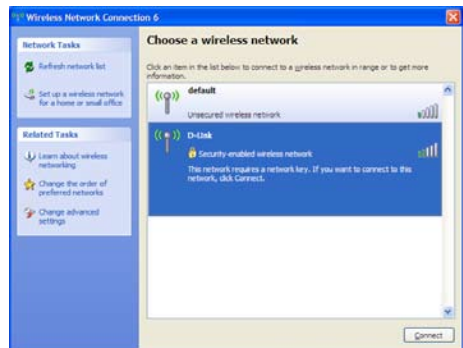


You may also right-click on the wireless computer icon in your system tray (lower-right corner next to the time). Select **View Available Wireless Networks**.



The utility will display any available wireless networks in your area. Click on a network and click the **Connect** button.

Refer to the **Wireless Security** section in the manual for information on connecting to a secure network.



If you want to use the D-Link Wireless Connection Manager instead of the Windows® XP wireless utility, refer to page 23 in the user manual.

Notes

Technical Support

D-Link's website contains the latest user documentation and software updates for D-Link products.

U.S. and Canadian customers can contact D-Link Technical Support through our website or by phone.

United States

Telephone

(877) 453-5465

Twenty four hours a day, seven days a week.

World Wide Web

<http://support.dlink.com>

Canada

Telephone

(800) 361-5265

Monday through Friday, 7:30am to 9:00pm EST.

World Wide Web

<http://support.dlink.ca>



Version 1.0

August 21, 2006

2907DW652A16000

Copyright ©2006 D-Link Corporation/D-Link Systems, Inc. All rights reserved. D-Link and the D-Link logo are registered trademarks of D-Link Corporation or its subsidiaries in the United States and other countries. Other trademarks are the property of their respective owners. Maximum wireless signal rate derived from IEEE Standard 802.11g and Draft 802.11n specifications. Actual data throughput will vary. Network conditions and environmental factors, including volume of network traffic, building materials and construction, and network overhead, lower actual data throughput rate. Environmental conditions will adversely affect wireless signal range. Product specifications, size and shape are subject to change without notice, and actual product appearance may differ from that depicted on the packaging. Visit www.dlink.com for more details.

Free Manuals Download Website

<http://myh66.com>

<http://usermanuals.us>

<http://www.somanuals.com>

<http://www.4manuals.cc>

<http://www.manual-lib.com>

<http://www.404manual.com>

<http://www.luxmanual.com>

<http://aubethermostatmanual.com>

Golf course search by state

<http://golfingnear.com>

Email search by domain

<http://emailbydomain.com>

Auto manuals search

<http://auto.somanuals.com>

TV manuals search

<http://tv.somanuals.com>