

# D-Link Quick Installation Guide

This product can be set up using any current web browser, i.e., Internet Explorer or Netscape Navigator.



**DWL-1750**  
D-Link *AirPremier*<sup>™</sup>  
Wireless Bridge / Router



This product should **ONLY** be installed by experienced installers who are familiar with local building and safety codes and where ever applicable, are licensed by the appropriate authorities. Failure to do so may void the D-Link product warranty and may expose the end user or the service provider to legal and financial liabilities. D-Link and its resellers or distributors are not liable for injury, damage or violation of regulations associated with the installation of outdoor units or antennas.

A safety grounding system is necessary to protect your outdoor installation from lightning strikes and the build-up of static electricity. So direct grounding of the antenna mast, Outdoor Bridge/Router and Surge Arrester is very important. And so mounting the Outdoor Bridge/Router on the antenna mast, you have to connect the Outdoor Bridge/Router to the same grounding system with the AC wall outlet. The grounding system must comply with the National Electrical Code and safety standards that apply in your country. Always check with a qualified electrician if you are in doubt as to whether your outdoor installation is properly grounded.

## Before You Begin

It's best to use a computer (with an Ethernet adapter) that is connected to a switch for configuring the DWL-1750. The default IP address for the DWL-1750 is **192.168.0.50:2000** with a Subnet Mask of **255.255.255.0** on the **wired Ethernet side**. The default setting of the wireless side is **192.168.1.50**, with the same subnet mask. You will need to assign your computer a Static IP address within the same range as the DWL-1750's IP address for the purpose of configuring the DWL-1750. **See the Manual on the CD-ROM if you need assistance in assigning a Static IP address for your network adapter.**

## Check Your Package Contents



**DWL-1750 Wireless Bridge / Router**



**Inline Power Injector**



**30M MIL-C-5015 Ethernet Cable**



**Reverse Polarity-N Female RF Cable**



**MIL-C-5015 RS232 Console Port Cable**



**Cross-over Ethernet cable**



**Grounding Wire**



**AC Power Cord**

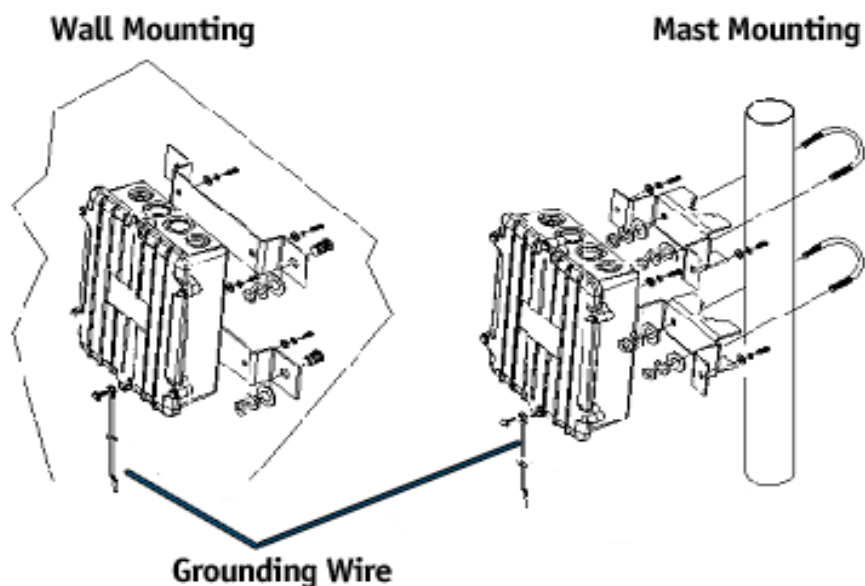


**Mast and Wall Mounting kit**

If any of the above items are missing, please contact your reseller.

# 1 Mounting your DWL-1750

A brief overview on mounting your DWL-1750



The DWL-1750 can be mounted on the side of a building or mounted to a mast as shown in the picture above. A wall (side) mount allows for mounting the DWL-1750 on the side of a building. This will provide a convenient mounting location when the roof overhang is not excessive and/or the location is high enough to provide a clear line of sight.



***A safe grounding system is necessary to protect your DWL-1750 from lightning strikes and the build-up of static electricity when installed in an outside environment. So direct grounding of the antenna mast, DWL-1750 and Surge Arrester is very important. So when mounting the DWL-1750 on an antenna mast, you have to connect the DWL-1750 to the same grounding system with the AC wall outlet. The grounding system must comply with the National Electrical Code and safety standards that apply in your country. Always check with a qualified electrician if you are in doubt as to whether your outdoor installation is properly grounded.***



## Connecting The DWL-1750 Wireless Router/Bridge To Your Network

**Step 1:** With the unit powered off, attach the antenna to the antenna connector.

**NOTE:** Do not over-tighten; tightness by hand is sufficient. Position the antenna for best signal reception.

**Step 2:** Attach the Console Port cable to the Serial Port. Attach the other cable end to the Serial Port on a PC running a terminal emulation program, and set the terminal to **115200** Baud, **No**-Parity, **8** data bits, **1** Stop bit, and ANSI compatible. **NOTE:** This connection is required only for setting up initial factory configuration information.

**Step 3:** Plug the female end of the power cord into the Inline Power Injector, and then plug the male end of the power cord into a power outlet or power strip. The Power LED on the front of the Inline Power Injector will light up.

**Step 4:** Run the Cross-Over Ethernet cable (included in your package) from the Data Input Port (on the front of the Inline Power Injector) to the Ethernet Port on the PC referenced to above.

**Step 5:** Plug the MIL-C-5015 style Ethernet connector into the Special Ethernet port on the back of the Router / Bridge.

**Step 6:** Plug the RJ-45 Ethernet connector (the other end of the Special Ethernet cable) into the Power & Data Output Port on the front of the Inline Power Injector. When the Router / Bridge receives power over the Ethernet cable, the Router / Bridge will start its boot sequence and the Active LED on the front of the Inline Power Injector will light up.

***Please refer to the product image on pg. 5***

- 1.** Special Ethernet port for connecting the MIL-C-5015 style Ethernet Cable
- 2.** Special serial port for connecting the MIL-C-5015 style RS-232 console port cable
- 3.** Reverse polarity-N Male connector for connecting an antenna or RF cable
- 4.** Power and Data output port for connecting another MIL-C-5015 style Ethernet cable
- 5.** Data input port for connecting an Ethernet cable to a hub, switch, pc or router
- 6.** AC power input port for connecting the power cord.

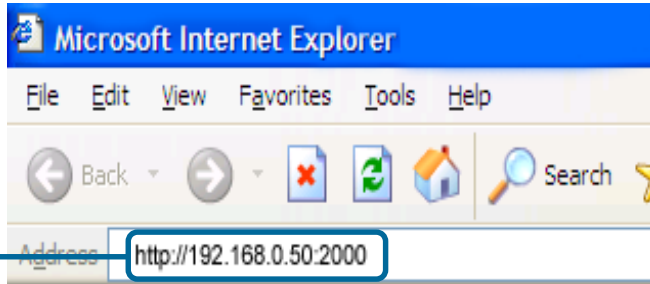
## 2 Connecting The DWL-1750 Wireless Router/Bridge To Your Network

### Hardware Installation Overview



### 3 Using The Setup Wizard

Open your Web browser and type "**http://192.168.0.50:2000**" into the URL address box. Then press the **Enter** or **Return** key.



The logon pop-up screen will appear.

Type "**admin**" for the username and by default the password is "**root**"



Click **OK**

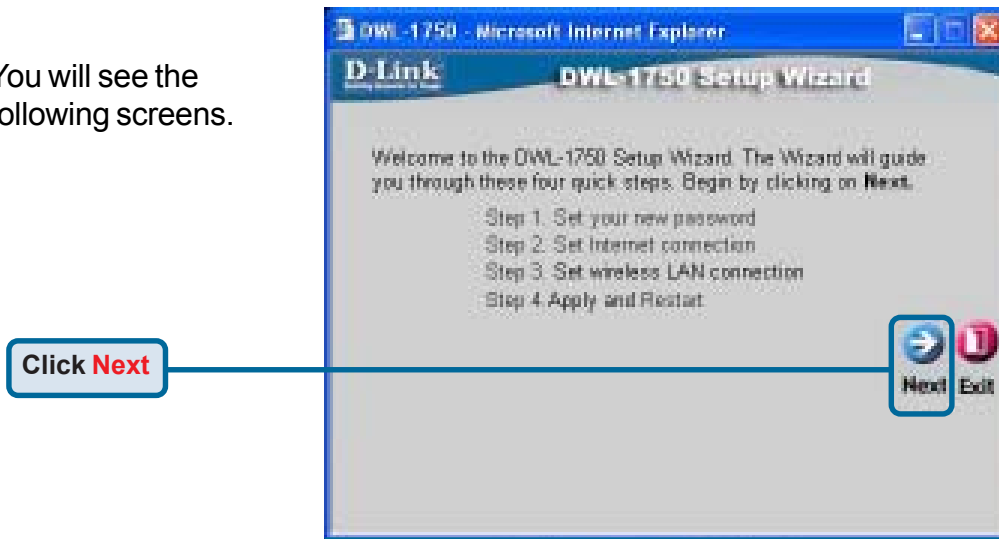
Once you have logged in, the **Home** screen will appear.

Click **Run Wizard**

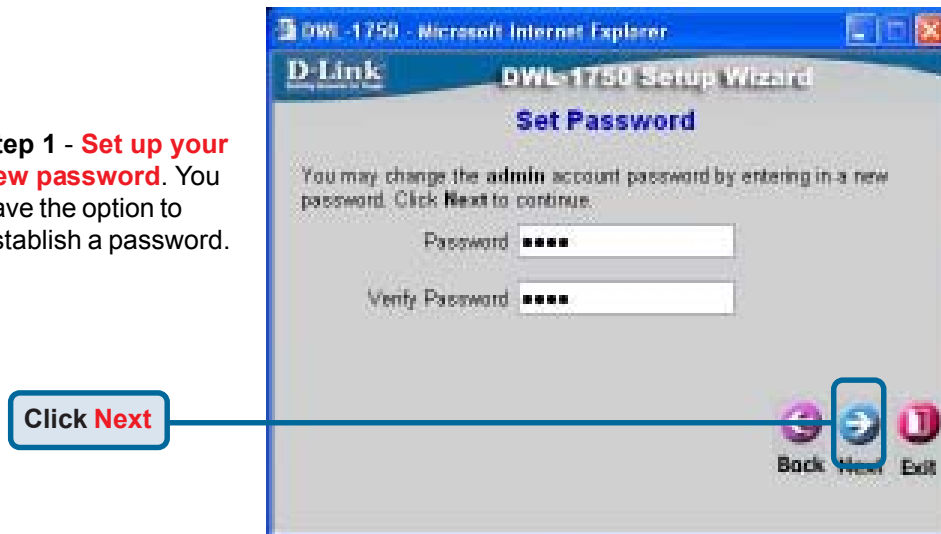


### 3 Using The Setup Wizard (continued)

You will see the following screens.



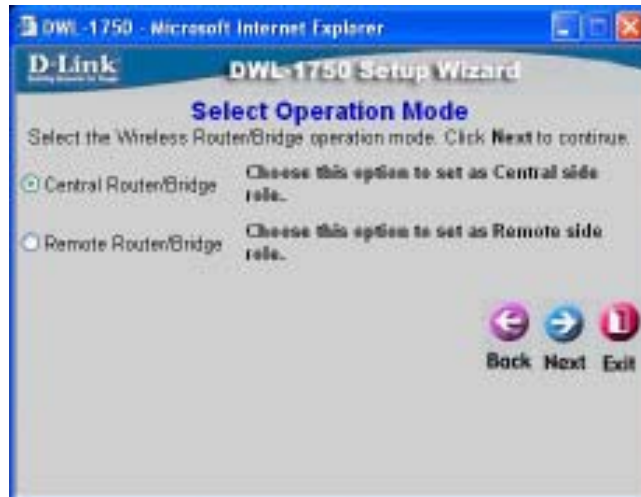
**Step 1 - Set up your new password.** You have the option to establish a password.



## 3 Using The Setup Wizard (continued)

### Step 2 - Select Operation Mode

Select your Operation Mode. Central Router/Bridge acts as a Point to Multi-Point Bridge. Remote Router/Bridge acts as a Point to Point Bridge. For example, in this QIG we will be using Central Bridge.



### Step 3 - Internet Connection Type (WAN)

Select your Internet Connection type if your DWL-1750 is set to be a Central Router. Some ISP's provide you with an automatic IP address, if this is the case you would select Dynamic. If you are assigned an IP address from your ISP, select Static. In this QIG we will be using a Static IP for Central Bridge.





## 3 Using The Setup Wizard (continued)

**Step 4 - Set Bridge IP Address** Enter your desired IP Address as well as a Subnet Mask, Gateway Address. Also don't forget to enter your Primary and Secondary IP Addresses for DNS resolution.

Click **Next**

The screenshot shows the 'Set Bridge IP Address' step of the D-Link DWL-1750 Setup Wizard. The interface includes the following fields and values:

Bridge IP Address:	192.168.0.50
Bridge Subnet Mask:	255.255.255.0
Bridge Gateway Address:	192.168.0.254
Primary DNS Address:	192.168.5.1
Secondary DNS Address:	168.95.1.1 (optional)

At the bottom right, there are three buttons: 'Back', 'Next', and 'Exit'. The 'Next' button is highlighted with a blue box, and a line connects it to the 'Click Next' text on the left.

**Step 5 - Set Wireless LAN Connection** Enter your desired ESS-ID and the channel that you wish to use here. This is the ESS-ID that will be broadcasted to wireless users.

Click **Next**

The screenshot shows the 'Set Wireless LAN Connection' step of the D-Link DWL-1750 Setup Wizard. The interface includes the following fields and values:

ESSID:	default
Channel:	E

At the bottom right, there are three buttons: 'Back', 'Next', and 'Exit'. The 'Next' button is highlighted with a blue box, and a line connects it to the 'Click Next' text on the left.

### 3 Using The Setup Wizard (continued)

#### Step 6 - Enable/Disable Wireless Encryption

If you wish to use WEP encryption, you may enable here. If you enable encryption, please be sure to select the encryption level and also the encryption key.

Click **Next**

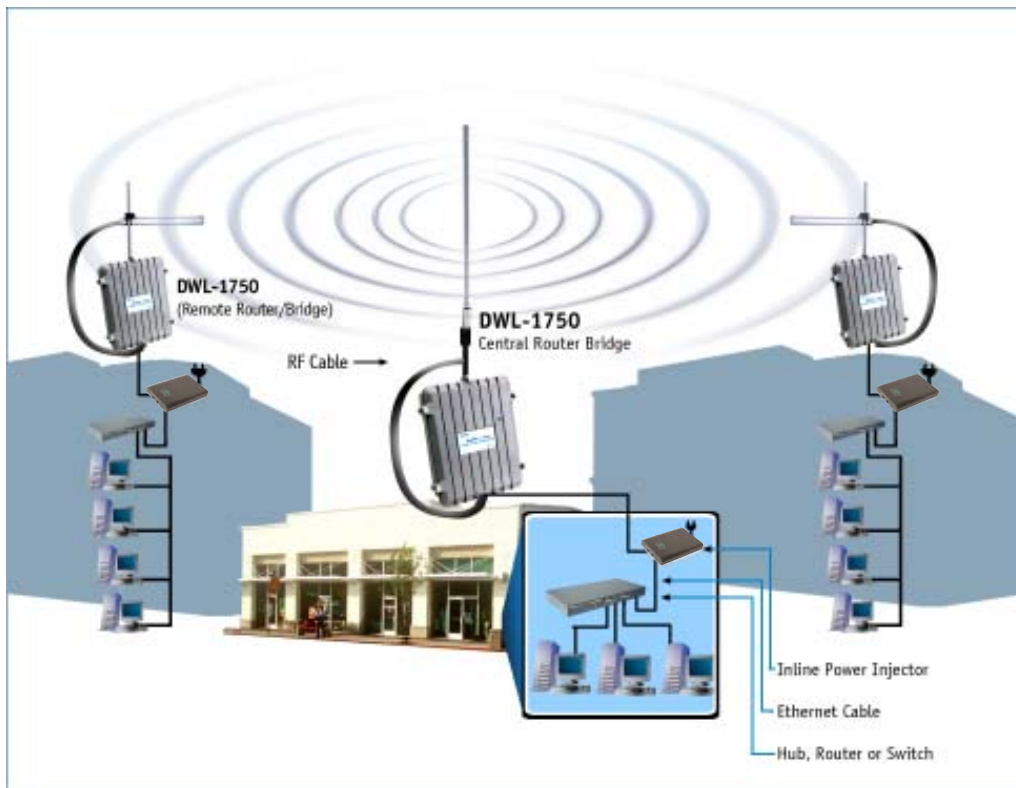


Click **Restart**



## 4 Your Setup is Complete!

When you have completed the steps in this *Quick Installation Guide*, your connected network should be the central bridge which will look similar to this:



## Technical Support

You can find the most recent software and user documentation on the **D-Link** website.

**D-Link** provides free technical support for customers within the United States and within Canada for the duration of the warranty period on this product.

U.S. and Canadian customers can contact **D-Link** technical support through our website or by phone.

### Tech Support for customers within the United States:

***D-Link Technical Support over the Telephone:***

(877) 453-5465

24 hours a day, seven days a week

***D-Link Technical Support over the Internet:***

<http://support.dlink.com>

email: [support@dlink.com](mailto:support@dlink.com)

### Tech Support for customers within Canada:

***D-Link Technical Support over the Telephone:***

(800) 361-5265

Monday to Friday 8:30am to 9:00pm EST

***D-Link Technical Support over the Internet:***

<http://support.dlink.ca>

email: [support@dlink.ca](mailto:support@dlink.ca)



## Free Manuals Download Website

<http://myh66.com>

<http://usermanuals.us>

<http://www.somanuals.com>

<http://www.4manuals.cc>

<http://www.manual-lib.com>

<http://www.404manual.com>

<http://www.luxmanual.com>

<http://aubethermostatmanual.com>

Golf course search by state

<http://golfingnear.com>

Email search by domain

<http://emailbydomain.com>

Auto manuals search

<http://auto.somanuals.com>

TV manuals search

<http://tv.somanuals.com>