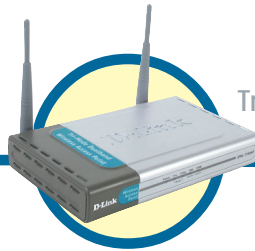


# D-Link Quick Installation Guide

This product can be set up using any current Web browser, i.e., Internet Explorer 6 or Netscape Navigator 6.2.3 or later.



## DWL-7100AP

D-Link *AirPremier™* AG  
Tri-mode Dualband Wireless  
Access Point

## Before You Begin

The default IP address for the DWL-7100AP is **192.168.0.50** with a subnet mask of **255.255.255.0**. For the purpose of configuring the DWL-7100AP you will need to assign your computer a static IP address within the same range as the DWL-7100AP's IP address. **See the Manual on the CD-ROM if you need assistance in assigning a static IP address for your network adapter.**

## Check Your Package Contents



**DWL-7100AP Wireless Access Point**



**CD-ROM (containing Manual and Warranty)**



**Ethernet Cable**



**5V DC, 2.0A Power Adapter**



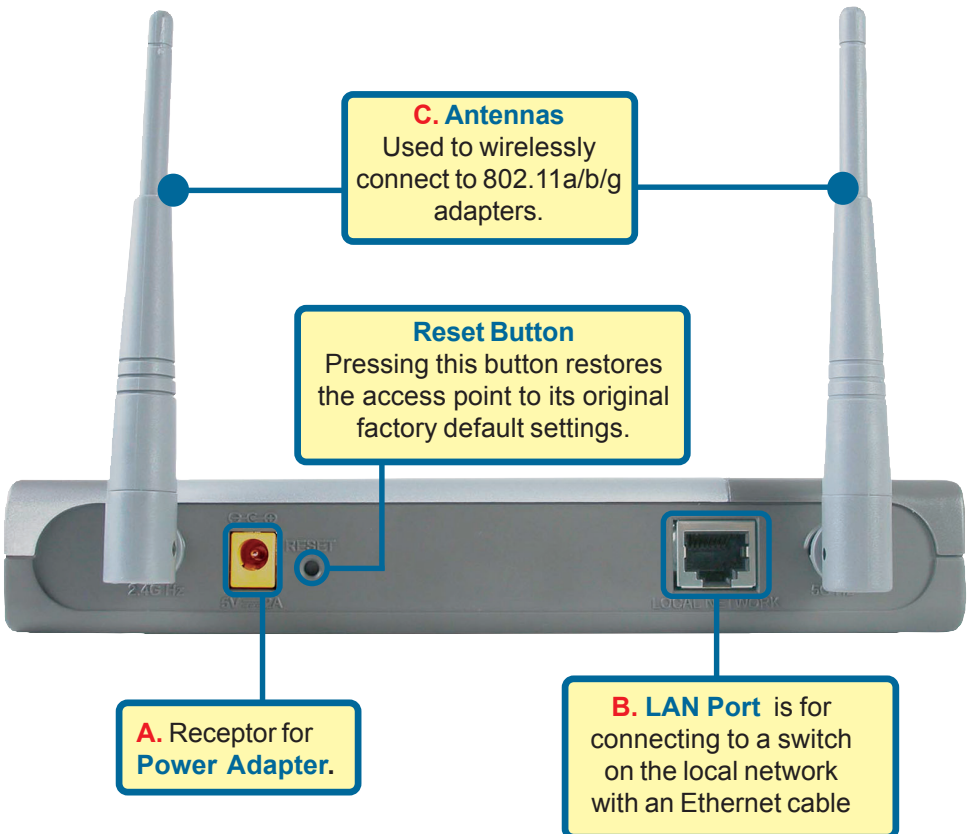
Using a power supply with a different voltage rating will damage and void the warranty of this product.

If any of the above items are missing, please contact your reseller.

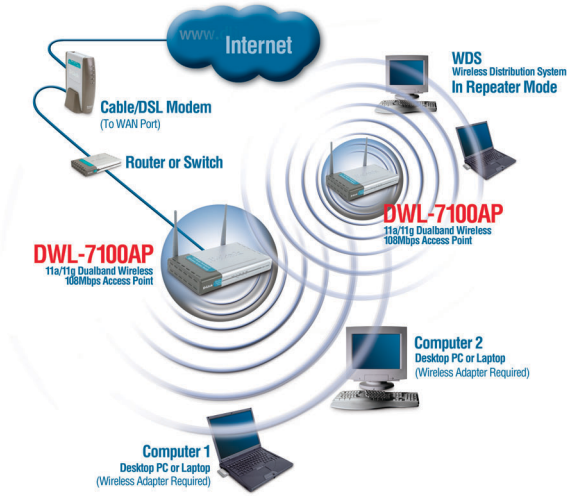
# 1

## Connecting The DWL-7100AP To Your Network

- A. First, connect the power adapter to the **receptor** at the back panel of the DWL-7100AP and then plug the other end of the power adapter to a wall outlet or power strip. The Power LED will turn **ON** to indicate proper operation.
- B. Insert an Ethernet cable into the **LAN port** on the back panel of the DWL-7100AP and an available Ethernet port on the network adapter in the computer you will use to configure the DWL-7100AP. The **Link LED** for the LAN Port will illuminate to indicate a proper connection.
- C. Computers with 802.11a/b/g wireless adapters can connect to the DWL-7100AP. The DWL-AG650 *AirXpert™* Wireless Cardbus Adapter and the DWL-AG520 *AirXpert™* Wireless PCI Adapter will connect, out of the box, with the DWL-7100AP, using their default settings.



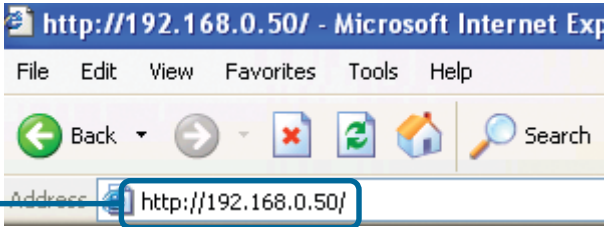
When you have completed the steps in this *Quick Installation Guide*, your connected network should look similar to this:



## 2

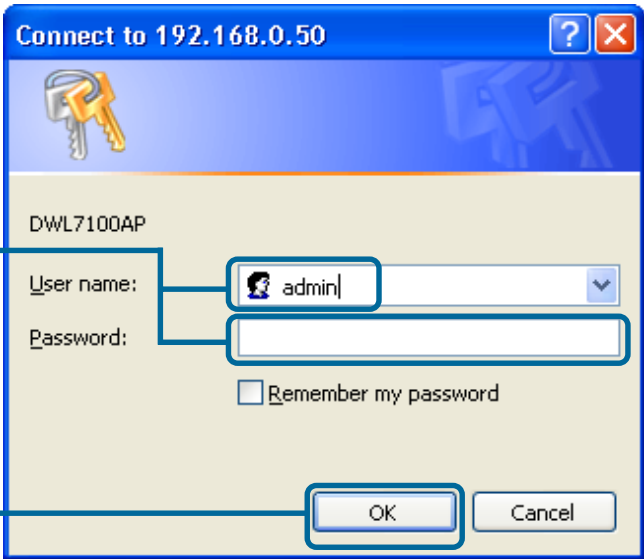
### Using The Setup Wizard

Open your Web browser and type **“http://192.168.0.50”** into the URL address box. Then press the **Enter** or **Return** key.



The logon pop-up screen will appear.

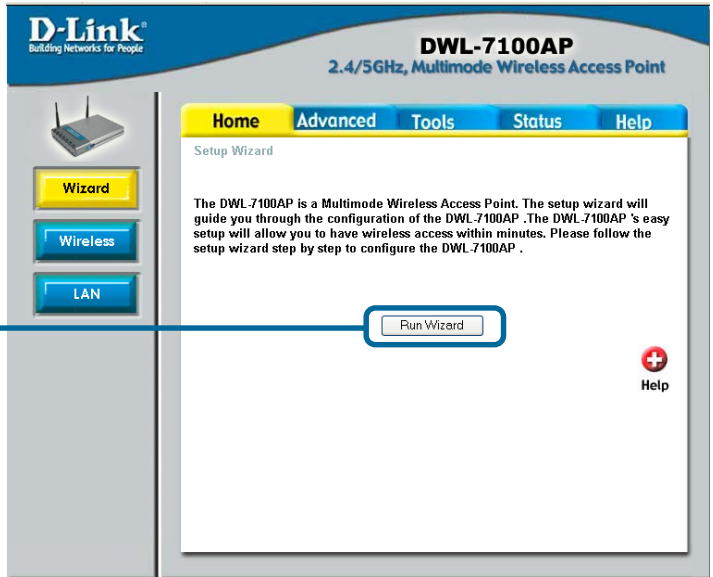
Type **“admin”** for the username and leave the password field blank.



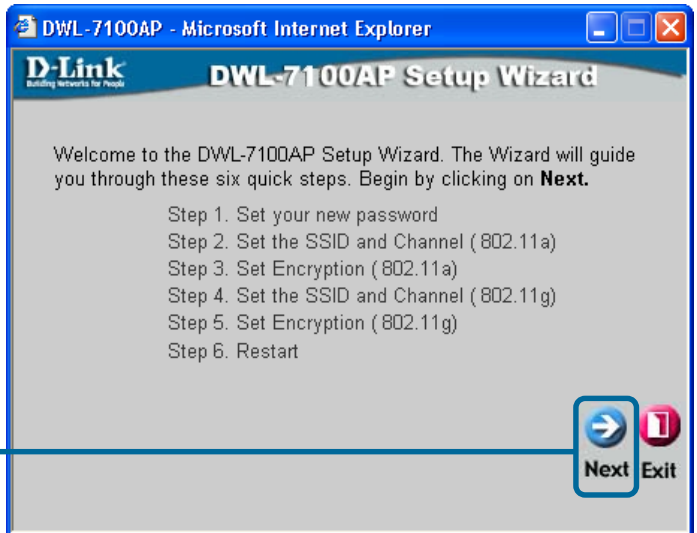
Click **OK**

## 2 Using The Setup Wizard (continued)

Once you have logged in, the **Home** screen will appear.



You will see the following screens.



**Step 1 - Set up your new password.** You have the option to establish a password.

Click **Next**

D-Link DWL-7100AP Setup Wizard  
Set Password

You may change the password by entering in a new password. Click **Next** to continue.

Password

Verify Password

Back Next Exit

**Step 2 - Wireless LAN 802.11a Setup**

The default wireless settings are:  
SSID = **default**  
Channel = **52**  
You can change these settings to match an existing wireless network.

Click **Next**

D-Link DWL-7100AP Setup Wizard  
Set Wireless LAN 802.11a Connection

Enter in the SSID name and Channel number to be used for the Wireless LAN 802.11a Connection. Click **Next** to continue.

SSID: default

Channel: 52

Back Next Exit

**Step 3 - WEP Encryption for 802.11a**

The DWL-7100AP is capable of 64-, 128-, and 152-bit encryption. Select the key size you wish to use and enter the key in the field provided. By default, WEP is **Disabled**.

Click **Next**

D-Link DWL-7100AP Setup Wizard  
WEP Encryption for 802.11a

If you wish to use encryption, enable it here and enter the encryption Key Values. Click **Next** to continue.

WEP:  Disabled  Enabled

Key Size:  64  128  152

Key1:

Back Next Exit

# 3

## Your Setup is Complete!

### Step 2 - Wireless LAN 802.11g Setup

The default wireless settings are:

SSID = **default**

Channel = **6**

You can change these settings to match an existing wireless network.

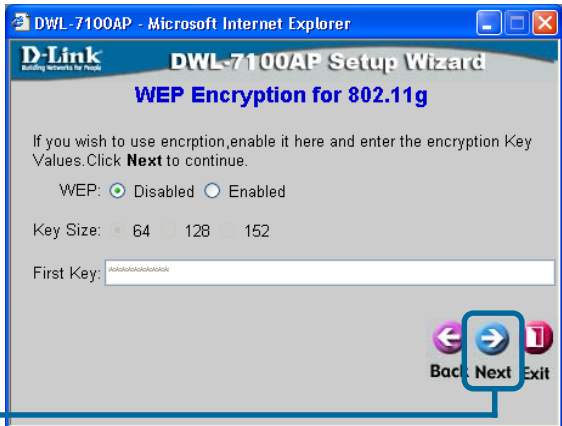
Click **Next**



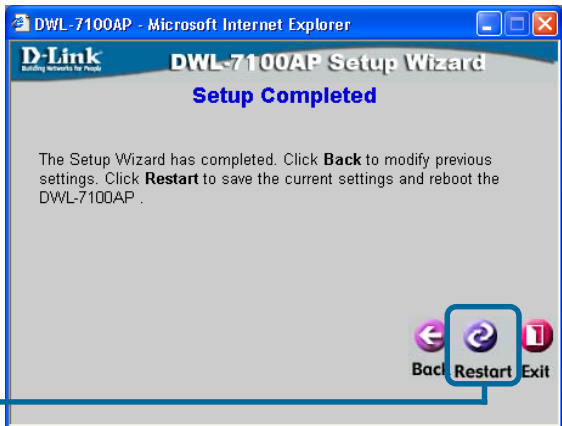
### Step 3 - WEP Encryption for 802.11g

The DWL-7100AP is capable of 64-, 128-, and 152-bit encryption. Select the key size you wish to use and enter the key in the field provided. By default, WEP is **Disabled**.

Click **Next**

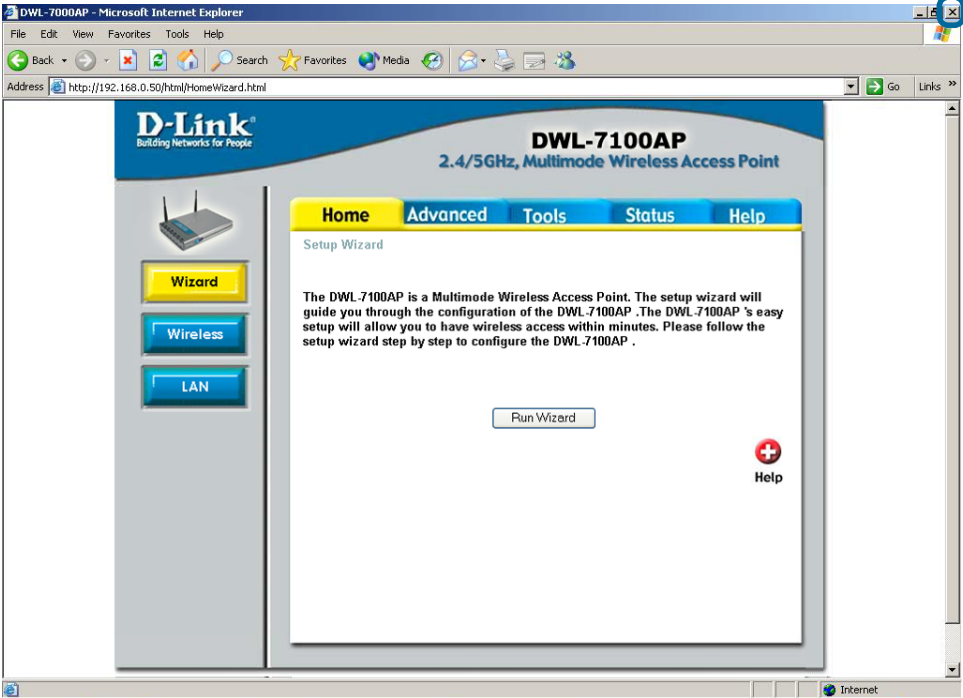


Click **Restart**




You will be returned to the **Home** tab.

Click to **Exit**



For additional settings or information, refer to the **Advanced**, **Tools**, or **Status** tabs on the web-management interface; or to the manual located on the CD-ROM.

 • For managing several DWL-7100APs, please utilize the D-Link *AirPremier™* AG Access Point Manager. For the latest version of the firmware or AP manager please go to <http://support.dlink.com>

## Free Manuals Download Website

<http://myh66.com>

<http://usermanuals.us>

<http://www.somanuals.com>

<http://www.4manuals.cc>

<http://www.manual-lib.com>

<http://www.404manual.com>

<http://www.luxmanual.com>

<http://aubethermostatmanual.com>

Golf course search by state

<http://golfingnear.com>

Email search by domain

<http://emailbydomain.com>

Auto manuals search

<http://auto.somanuals.com>

TV manuals search

<http://tv.somanuals.com>